

TEXAS KNIGHTS

Official Bulletin of the Texas Chess Association

VOLUME XIV

NO. 9

JUL - AUG, 1973

The 1973 Texas Junior co-champions are: Bobby Leininger, repeating in this role (having tied with Mitchell White in 1972 in Houston), and Ronald Henley (improving on last year's 3.5, third-place finish). Bobby also took home the trophy, on tie-breaks, declaring him the first Region VII (USCF) Junior Champ. The two winners met and drew in round 4 and were untouched the rest of the way.

The event, sponsored by the Wichita Falls Chess Club, drew 31 players from five of the Region VII States: Texas, Colorado, New Mexico, Oklahoma, and Louisiana. This is an improvement of significance for junior events, considering that the 1972 tournament in Houston had only 21 participants in a major metropolitan area. The TCA is beginning to work with the other Region VII states on a joint program to support the Region VII championship on an annual basis, hopefully rotated among the several states therein. This year's success has to be considered a good omen for junior chess in the Southwest.

The crosstable for this event is elsewhere in this issue.

Conducted simultaneously with the junior tournament was the 41-player Wichita Falls Open, in which John Dunning of San Antonio walked off with first place, as he has been known to do in the past, with 4.5, ahead of Mapes, Johnson, Underwood and Holder trailing with 4. The path was not completely rosy for the master, however, as he was held to a draw by Mclemore in round 3, despite a 500+ point rating difference.

Bill Winters of the Wichita Falls Chess Club very thoughtfully provided to TEXAS KNIGHTS more than thirty game scores from the two tournaments, some of which see print in this issue. Barring the direct transmission of games (annotated or not) by the players, this is what your magazine needs.

YOUR ASSOCIATION TODAY ...

... reaches over a thousand friends in 22 states and Canada through TEXAS KNIGHTS. Of the 115 out-of-staters on our rolls as of August 1, 38 are Louisianans and 29, Oklahomans. 89% are Texans, 151 from Houston (Harris County, 198), 134 from Dallas (Dallas County, 176), 93 from San Antonio, 82 from Tarrant County (Ft. Worth). Austin has 43 TCA members, Waco 29, Sherman (!) 26, and Wichita Falls 24. We have active groups in Corpus Christi, the Golden Triangle, Bryan, Denton, Marshall, Corsicana, Lubbock, Abilene, Odessa, Amarillo, and the Rio Grande Valley.

And in July 1972 our members numbered 451. Our annual growth rate has been a surprisingly steady, month-by-month, 120%!

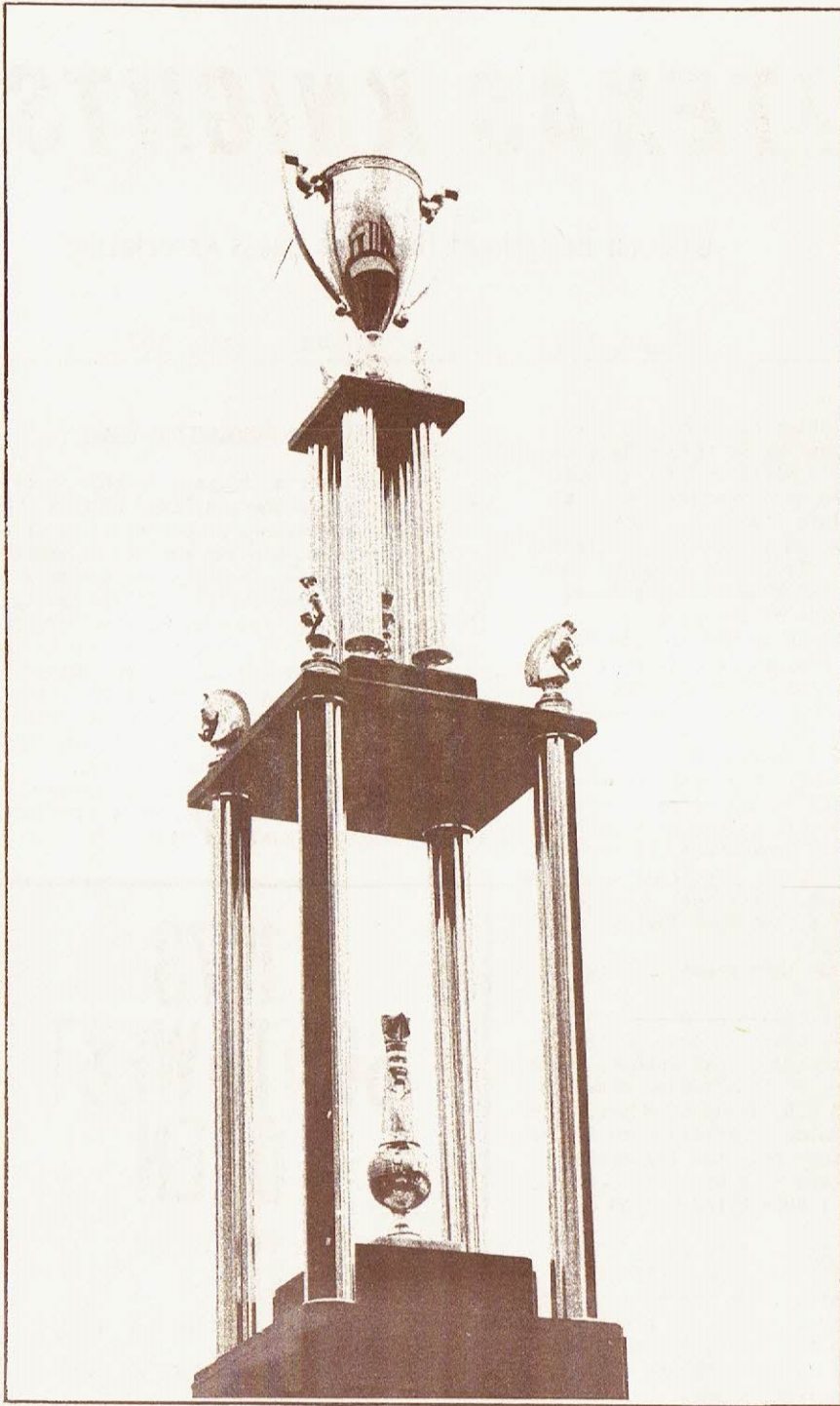
1973 SOUTHWEST OPEN

HOUSTON

SEPT 1 - 3

TCA's EVENT OF THE YEAR!!!

DETAILS INSIDE



THE SOUTHWEST OPEN

SOUTHWEST OPEN CHAMPIONSHIP

IN TWO SECTIONS
AT HOUSTON

sept 1,2,3

\$ 2000 prize fund

HOLIDAY INN

4640 SOUTH MAIN, HOUSTON, 77002 (1 block from H.C.C.)

7 round swiss (open)

5 round swiss (novice)

The first-place trophy to the left was created and donated by Lynn Shipp. It stands about four feet tall and as you will see, is a work of art.

(SEE PAGES 4 & 22 FOR FURTHER DETAILS)

A MOVEABLE FEAST-

THE 1973 SOUTHWEST OPEN

-Lynne Babcock

For the first time in six years, the Southwest Open will be held in Houston, and it is the Houston Chess Club's great pleasure (and small but persistent headache) to host this particular TCA event.

We regarded the Houston Open as a trial run for this Labor Day tournament and we've learned a lot from the one hundred and fifty-eight who played. Some improvements will be:

- isolation of the top boards from the large playing area.
- suspension of the hotel check-out time for the convenience of players with families.
- the addition of a small concurrent novice section to suit the needs of beginners and allow them that "extra day" to watch the final battle among the Southwest's masters and near-masters.

Special thanks are due to the many HCC and TCA members who have helped put together this year's Southwest Open. As one of the usual sideline people, I'm especially appreciative.

Particular mention, however, must go to Steve Moffitt, who will direct the tournament; Lorenzo Gaskill, HCC treasurer who will pay off the winners; Ron Abplanalp who will once again haul those hundreds of pounds of chess books from Dallas; and to Lynn Shipp of Discount Trophies, Inc., Houston who donated the first place trophy.

A final friendly word from the Holiday Inn, Main Street: make your hotel reservations NOW.

The Royal Fox Hunter's Golf, Chess, and Marching Society of Houston, Texas recently hosted a tournament attended by fifty players, and won by Eric (the Week-End Terror) Bone. Second was captured by Ronald Henley; Robert Brieger won the Top Fox Hunter Award.

THE VICE-PRESIDENT'S VIEWPOINT

- PAUL R. ESSENBERG, TCA V.P.

From correspondence and comments I hear from different parts of the State, it is quite clear that indeed it is an exceptional year for chess.

I have always felt that the decisive link between all chessplayers in the State is and always will be TEXAS KNIGHTS which, I am glad to see, has improved substantially and is well worth reading.

I have made a resolution that here in Waco we are not going to let the new Editor scrounge for material to publish and I urge all the chess club directors to include the TK Editor in your mailing list for your Club bulletin. I am sure that alone would be of great assistance to him.

The only objection I have to its contents is that it is still being edited in the archaic and time-consuming descriptive notation. I feel that, similar to the metric system, algebraic notation is coming inevitably, as chess is universal and we should not be out of step with the rest of the world. Inertia in this matter (and I am well aware of the many arguments in favor of descriptive notation, as there were on behalf of long-hand versus the typewriter or the horse-and-buggy versus the horseless carriage) is holding up progress. After all, it is not such a monumental transition as that, and the advantages are obvious, as I have seen so many players, in serious trouble, making valiant attempts to turn out the capital letters on their scoresheets rather than use the abbreviated and cryptic algebraic.

I cannot believe that our chessplayers are too lazy or not smart enough to learn something new and as simple as algebraic notation, as they will go to all lengths to learn new openings.

My recommendation to TEXAS KNIGHTS is: let us change over to algebraic notation NOW and never return to the elaborate game administration caused by the descriptive system.

All in favor, say a loud AYE and let's do it !!

Thanks for your support.

(HOW ABOUT IT, SPORTS FANS? ARE THERE ANY DISSENTING OPINIONS OUT THERE IN TCA LAND?)

FIRST WACO CHESS CONGRESS !

REGION VII - TEXAS JUNIOR

The first GREAT event in really outstanding facilities in Waco was held July 28-9. The I Waco Chess Congress drew 58 players to the new Convention Center on the bank of the Brazos, and commentary from the participants was unanimous in praise of the playing conditions and organization of the tournament.

The crosstable of the event is elsewhere in this issue. Paul Essenburg and Fil Peach did the honors for the Greater Waco Chess Club in splendid style, all rounds starting as advertised and proceeding smoothly.

Pre-tournament favorite John Jacobs of Dallas was upset in Round 2 by Ron Abplanalp, who was also last seen leaping tall buildings at a single bound. Since Alan Laverty, the only other 2000+ player present, was also upset by Charles Checkley in Round 2, the way was open for a Class A player to run off with all the marbles. Bill Janes of Waco did just that, finishing with an unblemished mark in fine style.

The prize fund was supplemented by local merchants, and structured using the "Waco Formula", which determines the amount of class prizes on the basis of the number competing for the prize. This idea worked out very well, and should be tested some more in open tournaments.

John Maynard of Austin took the Class A trophy, Nelson Ford of Spicewood the B, Lou Thurston the C, W. Poundstone Jackson the D, and James Wiseman the Unrated.

With six people tying for second with 4 points, it was more complicated than the Muzio Gambit to pick a method of payoff, considering some were looking for more than one prize. Finally, all the A and 2nd place cash was split six ways and Fred Pennington of Arlington took home the second place trophy.

It was also good to see a couple of very rare faces at the tournament. Two of the original founders of the TCA, Messrs. J.C. Thompson and Kenneth Hackney, played here, both for the first time in all too many years. An article elsewhere in this issue should convince some of the stronger players that this news just might turn out to be a mixed blessing as far as over-the-board meetings that may be coming up in the future are concerned. What is clear is that the return of both of these fine gentlemen to the Texas Chess Association is to be a boon to chess organization and promotion in this State.

1	LEININGER	1918	W28	W7	W6	D2	W8	4.5
2	HENLEY	1819	W29	W21	W9	D1	W4	
3	YARBRO	1785	W22	W10	L4	W14	W9	4
4	WEBB	1839	W20	W5	W3	D8	L2	3.5
5	WOLFF	1608	W18	L4	W22	W10	D6	
6	MOUNT	1797	W25	W16	L1	W26	D5	
7	BELL	1478	W30	L1	W18	D12	W17	
8	GANNON	1936	D13	W15	W27	D4	L1	3
9	HAZELWOOD	1930	W23	W11	L2	W21	L3	
10	RICHARDS	UNR	W24	L3	W16	L5	W11	
11	RUTZ	1726	W19	L9	W13	W27	L10	
12	HEWITT	1807	D27	L13	W15	D7	W26	
13	LUECKE, JOHN	1393	D8	W12	L11	L17	W27	2.5
14	RUBACK	UNR	L21	W20	W25	L3	D16	
15	KLAUS	1660	D17	L8	L12	W25	W21	
16	ROHRBAUGH	1414	W31	L6	L10	W22	D14	
17	LAMBERT	UNR	D15	L19	W31	W13	L7	
18	PETTY	UNR	L5	W23	L7	D28	W29	
19	GAMBLE	UNR	L11	W17	L21	W24	D20	
20	HOLDER	1341	L4	L14	BYE	W30	D19	
21	STEPHENSON	1491	W14	L2	W19	L1	L15	2
22	GAEBLER	UNR	L3	W24	L5	L16	W31	
23	BATEMAN	1381	L9	L18	L28	W31	BYE	
24	MATTHEWS	1524	L10	L22	W29	L19	W28	
25	MUESSE	1240	L6	BYE	L14	L15	W30	
26	MILLER	1181	BYE	L27	W30	L6	L12	
27	EDWARDS	1315	D12	W26	L8	L11	L13	1.5
28	LUECKE, JIM	1346	L1	L30	W23	D18	L24	
29	HOFFENSTEIN	1321	L2	D31	L24	BYE	L18	
30	WASCHKA	UNR	L7	W28	L26	L20	L25	1
31	WILLIAMS	UNR	L16	D29	L17	L23	L22	0.5

WICHITA FALLS OPEN

1	DUNNING	2250	W19	W31	D12	W7	W2	4.5
2	MAPES	1977	W35	W8	W11	W15	L1	4
3	O. JOHNSON	1687	W9	L10	W27	W26	W13	
4	R.S. UNDERWOOD	1703	L10	W33	W34	W6	W11	
5	F.D. HOLDER	1573	W29	L6	W40	W14	W15	
6	JUREVICS	1965	W25	W5	D13	L4	W12	3.5
7	M. NELSON	1928	W34	W21	W10	L1	D8	
8	THURSTON	1599	W24	L2	W28	W25	D7	
9	S. JOHNSON	1291	L3	W22	W16	D21	W20	
10	CANADAY	1362	W4	W3	L7	L11	W26	3
11	FROST	1566	W39	W17	L2	W10	L4	
12	MC LEMORE	1698	W27	W14	D1	D13	L6	
13	PASCOE	1523	W41	W16	D6	D12	L3	
14	STAPP	1525	W22	L12	W23	L5	W27	
15	CALLAWAY	1740	W36	W26	W32	L2	L5	
16	SNEAD	1685	W33	L13	L9	W28	W25	
17	REKEY	1938	W30	L11	D20	D32	W21	
18	MARTIN	1723	D32	D20	L25	W29	W30	

TCA BUSINESS MEETING

-John Lyon, President

The TCA Business Meeting for 1973 will be held between Rounds 1 and 2 of the Southwest Open, on September 1 at 5:00 PM. A number of items on the agenda in addition to the regular business of establishing the 1974 TCA tournaments and the election of officers make this meeting an especially important one for all resident members to attend. The Board and I have been giving serious consideration to a set of Constitutional, By-Laws, and general policy changes, hopefully for the better, that will, if adopted, certainly change the face of the TCA. I have listed some of these below, in hopes that interested parties will be considering their opinions before the meeting; I think we have a few 'pro's' in mind; we're looking for 'con's' we may have overlooked before. Some are relatively minor, but need to be done. Here's what we have in mind:

QUORUM: The statutory quorum for a business meeting is 15% of the membership (resident). We suggest that this is no longer practical, except via the establishment of a proxy system. My idea is to permit any regular member to be able to carry as many as 10 proxies, and thus retain a semblance of a democratic structure.

POSTAL CHESS: The TCA, despite certain Constitutional directives to the contrary, has remained almost exclusively a tournament-oriented organization. In my mind, the dictate 'to promote chess in the State' includes the TCA operation of a postal chess system, independent of all other such. A proposal will be made to establish an investigative committee to set up the structure of this proposed system, to consider financing, allocation of TEXAS KNIGHTS space to such, etc. Mr. Kenneth Hackney of Nacogdoches, a regional membership director for the CCLA, has offered his services in this capacity, and as the coordinator for the system. It has much to recommend it.

APPOINTMENT OF USCF DIRECTORS: This is a function given to all State organizations by the USCF. We ought to include it in our By-Laws with specifics on the apportionment of directors to the various regions of the State, in a fair and impartial manner.

EXPANSION OF THE TCA BOARD: I propose the return of the seven state regions, and the appointment of a Board member representing each. Too much coordination by too few volunteers during the year, with the Association growing by leaps and bounds, is soon going to make the current Board ineffectual, if not exhausted. I propose as an adjunct to this that a Correspondent be selected by each USCF affiliate in the State to communicate with the TCA, and in particular, on a continuing basis, with the TEXAS KNIGHTS Editor. This second, of course, is not a legislative function of the TCA in a strict sense, but we should pursue it with some interest.

TEXAS KNIGHTS: There are particularly strong arguments for explicit and permanent definition of the standards to be met by TEXAS KNIGHTS. The expenditure for publication is by far the largest budget line item. A proposal shall be made to form an investigative committee, whose decisions shall be immediately implemented upon completion of the study, to consider the future format and publishing policies of the magazine in some detail. A major facet of this proposal, too, is that the Editorship should be an appointive position of the Board, not elective, and that consideration be made also of possible remuneration to the Editor for this, the most difficult job in the Association.

DUES: It will be proposed that dues be increased across the board by one dollar, the first such increase since 1963.

OTHER BUSINESS: A presentation on junior chess activities, with some ideas on possible support mechanisms, including subsidies by clubs and the Association, will be made. There are several alternatives and programs we should try to get rolling.

Also, it is important to many people that a coordinated tournament calendar for a year in advance be developed, so that Johnny-come-lately's can at least know when NOT to schedule events. I will be happy to talk this possibility over all organizers who have possible tournaments in mind, and try to get something done on this, at the Houston Chess Club, at 11:00 AM on Sept. 1.

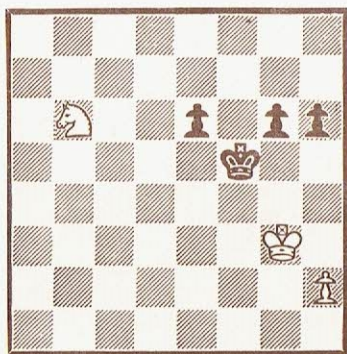
I hope to see all of you at the Southwest Open. Thanks for listening, and for your support and interest during the past year.

We hope to establish this section as a regular feature. Our desire is to include endgame studies, interesting endgames played by TK readers, and even problem compositions (perhaps not specifically the province of a traditional endgame article). Our purpose is to instruct and entertain. This section will thrive only with nourishment, and we ask all subscribers to participate with contributions.

Paul Essenburg writes: 'This endgame will prove that it is well worthwhile to read TK's issue (see June, 73), explaining the pitfall of such endings. To be perfectly honest, I did not know it, and now that I do, I must say I appreciate telling me about it.

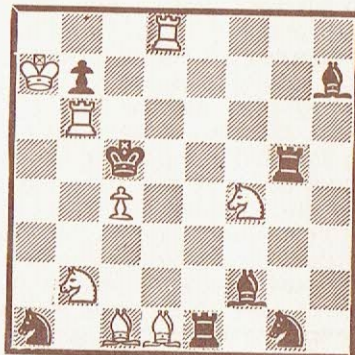
'Bill Winters will probably never forgive me for this...'

White: Paul R. Essenburg, Waco
 Black: Bill Winters, Wichita Falls
 Odessa Spring Open, 1973



41. Nc4 h5 42. Ne3+ Kg5 43. h3 Kf6 44. Kf4 g5+ 45. Ke4 Kf7 46. Ke5 Ke7 47. Nf1 Kf7 48. Ng3 h4 49. Ne4 Kg6 50. Nf6 Kf7 51. Ng4 Kg6 (...Ke7 52. Nh6) 52. Ke6: Kh5 53. Ke5 (no stalemates today, thanks) Kg6 54. Nf6 g4 (what else?) 55. Ng4: Kg5 56. Ne3 Kh5 57. Kf5 Kh6 58. Kg4 Kg6 59. Kh4: Kh6 60. Kg4 Kg6 61. h4 (precious little devil) Kh6 62. Nf5+ Kg6 63. h5+ Kf6 64. Nh4 Kg7 65. Kg5 Kh7 66. Nf5 Kg8 66. Kg6 Kh8 67. h6 Kg8 69. Nd6 and Black resigns as the rest unfolds almost mathematically.

Leonid Kubbel (USSR), 1923, mate in three:



Last month's composition, reproduced above for your convenience, was a blow to our high expectations for our solvers. Oh, we had solutions galore, from all corners, but almost to a man, wrong. The 1962 N.Y. Mets had a higher winning percentage than this debacle.

SOLUTION: 1. B-N4! - threat of interference on 2. B-B5! (neither B or R will be able to capture this pig in a poke because of the mates on d3 and d5.)

TRIES: 1. ... B-N8 2. B-Q2 N-B7 3. N(B)-B3

1. ... B-B7 2. B-Q2 and 3. B-N4

1. ... R(8)-K4 2. R-Q5+ and 3. N-K6

1. ... R(4)-K4 2. N-K6+ and 3. R-Q5

1. ... N-R6 2. B-B3!! and a new interference motif appears one square along the diagonal. (Threat is 3. R-N5. Note that 2. B-B5? fails to ... NxN!)

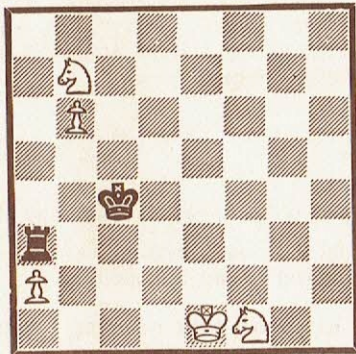
1. ... N-B7 2. B-K6! (3. N-R4)

The vast majority of would-be solvers tried the thematic, but overly-blunt 1. B-Q2?

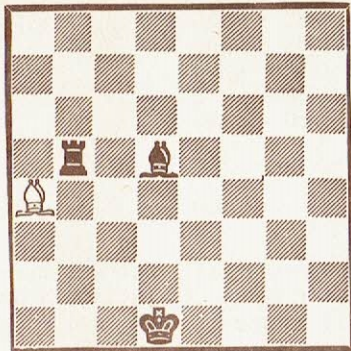
One solution using this ran to five handwritten pages of analysis. On ...N-B7 (forced), 2. BxN R-R8+! is the fly in the ointment, and 2. BxR has ... R-K4! to forestall the finale.

Out of all this came only two correct solutions: Duval West, and a team of Steve Mount and Alice Katelansky. We had offered three copies of R. Briege's IMAGINATION in the ENDGAME, and the temptation is strong to give Steve and Alice each one; we will resist temptation, however, let them fight it out among themselves (we did, after all, offer only one book per solution) and offer the last remaining copy to the FIRST correct solution of both of the following problems:

Problem 1: White to play and win -----



Problem 2: Retrograde analysis: White, having just moved, accidentally knocked his King from the board. Where was the King, and what was White's last move??



Hopefully, these won't prove as difficult as last month's teaser.

With three rounds remaining in the Western Interzonal in Petropolis, Brazil, Lajos Portish has gained a half-point lead over rivals Henrique Mecking and Vlastmil Hort. Ljubojevič, who lead in the early rounds, is fourth, but can tie Portish by winning his adjourned game.

From the ODESSA CHESS NEWSLETTER of the Odessa Chess Club: "The Tall-in-Texas Open (June 9-10) was won by Gary Simms. Thirty eight participated. This was reported to be a new high for an open tournament in Amarillo. Bill Snead directed for the Amarillo Chess Club."

THE TOP 25 TEXANS

Our thanks to Tom Weaver of the Corpus Christi Chess Club for compiling this rating summary:

1. John Jacobs	2374
2. Ken Smith	2359
3. John Hall	2324
4. John Dunning	2250
5. Eric Bone	2241
6. John Bob Payne	2170
7. Norman N. Snapp III	2151
8. Tracy Watson	2143
9. Jack Hardy	2142
10. Gary Simms	2111
11. Steve Moffitt	2081
12. James Kalan	2075
13. David Willis	2070
14. John Milburn	2060
15. Charles Floto	2053
16. Blake Stevens	2042
17. Bill Wheeler	2034
18. David Babcock	2027
19. William Garrett	2026
20. Larry Englebretson	2021
21. Alan Laverty	2018
22. Fred Payne	2016
23. Cesar Parreiras-Horta	2008
24. Robert Brieger	2007
25. John Schmidt	2006

chess digest

P.O.B. 21225
Dallas 75211

Publishers of:

CHESS DIGEST ***** monthly

CHESS NEWSLETTER *** 1st and 15th
of each month

Write for our free catalog of chess books, magazines, and equipment.

(PAID ADV.)

THE RATING SYSTEM

-JOHN LYON

Although attempts to assign numerical values (on a relative scale) to player proficiency date from the 1890's, rating systems have been placed on a sound mathematical basis only in the last two decades. In this and a subsequent article I hope to clarify the rating formulae used today by the USCF. It has been some time since CL&R carried a description of the system, and the constant questions from relative newcomers to rated play suggest that the straightforward publication of the rating formulae would be of widespread interest; even the old hands who find this month's article 'old hat', though, may be surprised at the mathematical principles supporting the system, the topic of next month's sequel.

As to the formulae: there are only two equations used -- one for both provisional and unrated players, and the other for 'established' players. A provisional rating is given anyone who has played 16 games or less in USCF rated play.

The equation for unrateds and provisionals is:

$$R = R_{ave} + 400 (W - L) / N$$

where R is the computed rating of the player on the basis of R_{ave} , which is the average rating of all the opponents he faces. N is the total number of games played, and wins are the 'W' and losses designated by 'L'. Draws are not explicitly included, but are counted through the inclusion of the rating for ALL opponents in R_{ave} .

For instance, an unrated player participates in a five-round tournament, playing opponents rated: 1600, 1950, 1450, 1650, and 1700. Let us suppose that he scores 3 wins and loses 2. His rating is computed:

$$\begin{aligned} R &= 1/5 (1600 + 1950 + 1450 + 1650 + 1700) \\ &\quad + 400 (3 - 2) / 5 \\ &= 1670 + 400 (1/5) \\ &= 1750 \end{aligned}$$

His new (provisional) rating is 1750. This same process will be performed when he competes in other events, AVERAGING OVER ALL HIS GAMES, NOT JUST THOSE IN THE LATEST TOURNAMENT, UNTIL

HE HAS PLAYED MORE THAN 16 GAMES, at which time he is 'established'. His rating will then be computed using the following equation for all his future events:

$$R = R_{old} + 16 (W - L) + .04 \sum (R_{opp} - R_{old})$$

where R_{old} is his 'before' rating, and R his 'after' rating. W and L are as before, and R_{opp} is the rating of an opponent.

The ' \sum ' is a symbol just meaning ' sum of '

and is applied in the manner indicated below. An example will make this clearer.

Using the example above, but assuming that the player, rather than being unrated had a rating of 1650 prior to the tournament, we find that:

$$\begin{aligned} 1600 - 1650 &= - 50 \\ 1900 - 1650 &= 300 \\ 1450 - 1650 &= -200 \\ 1650 - 1650 &= 0 \\ 1700 - 1650 &= 50 \end{aligned}$$

$$\sum = 100$$

It will be noted that all that was done was to sum the differences in ratings between the player and all opponents. We then proceed to compute R:

$$R = 1650 + 16 (3 - 2) + .04 \times 100$$

$$R = 1650 + 16 + 4 = 1670$$

which is his new rating.

The only exceptions to this formula are:
 1) if the rating difference exceeds 350, set it to 350. This prevents huge gains or losses. (Watch the sign!)
 2) for players above 2400, the multipliers 16 and .04 are reduced to 8 and .02.
 3) if a player gains more than 32 points in an event by this equation he gets 1.5 bonus points for each point above 32 that he achieved. This helps rising players reach their correct rating level faster. It is NOT true for players going downhill.

And, for bookkeeping purposes, while rating a tournament, the USCF rates the unrateds first, the provisionals next, using their new ratings in each step, then rates all others.

GAMES BY MEMBERS

Unbelievable! Why didn't Black win a pawn with 23. ...BxN; 24. QxB, RxP? If White replies 25. B-B3, then 25. ... NxP!, and he is in big trouble.

24. R-QB1 R-R1
 25. RxR RxR
 26. B-N4!

This move all but demolishes Black's hope for counter-attack. On 26. ... R-R6, White wins a pawn with 27. NxP, while 26...N-B1 is passive. Therefore, Browne plays

26. ... Q-Q1
 27. B-Q4 BxB
 28. QxB Q-B3
 29. QxQ NxQ
 30. B-B3 R-R6
 31. P-K5 PxP
 32. PxP N-Q2
 33. P-Q6 N-K3
 34. NxP R-N6
 35. RxP NxP
 36. R-K4 NxBch
 37. PxN R-Q6
 38. P-B4

White's weak pawns and Black's active Rook already foreshadow a draw. The game continued:

38. ... K-N2
 39. R-B4 K-B1
 40. R-B8ch K-N2
 41. R-N8 N-Q5
 42. NxN RxN
 43. R-N6

with a draw in a few more moves. A good, fighting game.

(TO THOSE OF YOU WHO SENT US GAMES - THANKS!)

 (BUT DON'T BLAME THE LOUSY NOTES ON THESE GUYS... ALL ANNOTATIONS BY THE EDITOR UNLESS OTHERWISE STATED.)

Our first game is an encouraging example for aspiring masters, wherein we see Grandmaster Walter Browne engaged in an uphill struggle to draw our own fellow Texan John Dunning.

SPACE CITY CHESS CONGRESS
 HOUSTON, DECEMBER, 1972

J. Dunning White	Walter Browne Black
1. P-Q4	N-KB3
2. P-QB4	P-B4
3. P-Q5	P-K3
4. N-QB3	PxP
5. PxP	P-Q3
6. P-K4	P-KN3
7. B-K2	B-N2
8. N-B3	O-O
9. O-O	R-K1
10. N-Q2	N-R3
11. P-B3	N-B2
12. P-QR4	P-N3
13. N-B4	R-N1

With this move Browne avoids the usual continuation 13... B-QR3. Compare with Gligoric's column in the April '73 issue of CL&R.

14. B-N5	P-KR3
15. B-K3	B-R3
16. Q-Q2	K-R2
17. KR-N1	BxN
18. BxB	P-R3
19. P-QN4	P-QN4
20. RPxP	RPxP
21. B-Q3	

After the game Dunning said that he wanted to provoke 21. ... P-B5 with this move. But after the immediate 21. B-K2, it seems that Black must eventually play P-B5 anyway, e.g., 21. B-K2, N-Q2; 22. R-R7, B-B1 (the threat was PxP); 23 Q-B2!, and black is forced to play P-B5 to avoid losing a pawn. The game continuation, therefore, appears to be a loss of tempo.

21. ...	P-B5
22. B-K2	N-Q2
23. P-B4?	Q-B3??

Here is yet another example of Dunning's play - this time against Grandmaster Lubomir Kavalek.

J. Dunning	L. Kavalek
White	Black
1. P-Q4	P-Q3
2. P-QB4	N-KB3
3. N-QB3	QN-Q2
4. N-B3	P-K4
5. P-KN3	P-KN3
6. B-N2	B-N2
7. O-O	O-O
8. P-K4	P-B3

After an unusual start, the game has transposed into a standard variation of the King's Indian.

9. P-KR3	Q-N3
10. R-K1	R-K1

More common here is 10. ... Pxp.

11. P-Q5	N-B4
12. R-N1	

The beginning of a plan which cedes Black the initiative. It would be better to play 12. Q-B2, B-Q2 (or 12. ... Pxp; 13. Pxp, B-Q2); 13. B-K3, with a position similar to one which arose in the game Korchnoi- Nejmiedtinov, Riga, 1958.

12. ...	P-QR4
13. P-N3	B-Q2
14. P-R3	

Now it is clear that White wants to oust the Knight at c5, but...

14. ...	PxP
15. BPxP	KR-QB1

and if White now continues 16. P-N4, then 16. ... Pxp; 17. Pxp, N-R5, and Black appears to be winning, e.g., on 18. NxN, BxN; 19. Q-K2, B-B7; 20. R-N2, Bxp, Black wins.

16. B-B1	Q-Q1
----------	------

Excellent! Seeing no way to improve his Queen-side position, Black embarks on a King-side attack.

17. P-QR4	N-K1
18. N-Q2	P-B4
19. P-B3	P-B5
20. P-KN4	P-R4
21. N-B4	PxP
22. RPxP	B-B3
23. R-K2?	

Concerned about an eventual attack along the King-Rook file, Dunning makes a tactical error.

23.	NxRP!
24. NxN	BxN
25. PxB	RxN
26. RxP	Q-B1
27. R-N1	Q-B4ch
28. K-R1	R-B1

Black's combination at move 23 has not resulted in the gain of material, but rather in the gain of piece activity. Black now attempts to use this activity as a springboard for a King-side attack.

29. B-QN2	Q-R2
30. R-R2	R(5)-B2
31. B-N5	R-R2
32. RxR	QxRch
33. K-N1	B-Q1
34. B-B6!	

A good defensive move which seals the QB-file. And not 34. BxN because of 34. ..B-N3ch 35. K-N2, Q-R5!; 36. Q-K2, Q-N6ch; 37. K-R1 B-B7!!; 38. Q-B1, Q-R5ch; 39. K-N2, R-B7, finis.

34. ...	Q-R6
35. B-B3	

To prevent 35. ... B-N3ch.

35. ...	Q-N6ch
36. K-B1	N-B3
37. B-K1	Q-R6ch
38. K-K2	NxKP

Now things really get interesting.

39. PxN	Q-K6ch
40. K-B1	QxP
41. R-N3!	

The best try!

41. ... Q-R8ch
 42. K-K2 Q-N7ch
 43. B-B2 B-R5
 44. Q-KN1

White's first Queen move of the game.

44. ... Q-K5ch
 45. K-Q2 B-N4
 46. Q-N1!

The true strength of 41. R-N3! can now be appreciated, for it is this second Queen move which breaks the attack.

46. ... P-B6ch
 47. K-B3 QxP
 48. QxPch K-R1
 49. QxP?

In time trouble, Dunning misses a win with

49. Q-B7!

49. ... Q-B5
 50. QxPch(!) QxQ
 51. B-Q4

Drawn!

A fascinating game which reflects highly on Dunning's ability to defend difficult (lost?) positions. Congratulations to Dunning for these fine efforts!

Though the name of Ronald Henley may not ring a familiar note, we predict that it soon shall. Not convinced? Then here is his draw with Grandmaster Arthur Bisguier.

SOUTHERN OPEN
 MOBILE, ALABAMA, JULY, 1973

R. Henley White	A. Bisguier Black
1. P-QB4	P-K4
2. N-QB3	N-KB3
3. P-KN3	B-N5
4. B-N2	Q-O
5. N-B3	N-B3
6. O-O	BxN
7. QPxB	

An interesting way to recapture. Black could now open the center with 7. ... P-Q4 but this appears risky, e.g., 8. PxP, NxP; 9. NxP, NxP; 10. PxN, NxN; 11. QxQ, RxQ; 12. B-B4, and White seems to have an advantage.

7. ... P-Q3
 8. Q-B2 N-KR4?

There is an hackneyed old adage, which in translation from the German, warns: "A Knight on the side, you cannot abide". But a less pedestrian version might be: "On the side with a hopper, you'll soon come a cropper". If they are believed, little rules like this can be really dangerous, for they contain not the slightest hint that there are exceptions. The present position, however, is not one of these.

9. N-N5! P-KN3

N-KB3 was safer, but Bisguier was probably relying on his opponent's inexperience.

10. B-B3?

But this move is weak. Better chances were offered by an immediate R-Q1.

10. ... N-N2

Against 10. ...P-KR3, White has 11. BxN, PxN 12. BxP(Henley). But 12. ...B-R6, 13. R-K1 (or Q1), P-KB4 looks unclear.

11. R-Q1 P-KR3
 12. N-K4 P-KB4
 13. N-B5 P-KN4

Now it is seen why 10. B-B3? was in error; Black has gained several tempi at the expense of the Knight whose natural retreat was removed.

14. B-Q5ch K-R1
 15. Q-N3 N-QR4

Of course not 15. ... R-N1, 16. BxN wins a piece. And on 15. ... PxN, 16. BxN is mean.

16. Q-R4 PxN
 17. BxNP!?

If instead White plays 17. QxN, there

follows 17. ... P-B3, 18. QxP, PxB; 19. RxP, and the three pawns will not be worth the piece. Best here is 17. B-N2, Q-B3; 18. QxN, with equality (Bisguier).

17.	QxRch
18. QxQ	BxB
19. Q-R4	N-QB3
20. B-K3	N-K3
21. R-Q1	P-KB5
22. BxQBP	NxB

Bisguier criticized his last two moves, suggesting instead R-Q1.

23. Q-N5	QR-Q1
24. RxR	RxR
25. QxN	K-N2

Nothing is offered by 25. ... R-Q8ch; 26.K-N2, N anywhere, dis ch, 26. P-B3 and Black's pieces have lost their cohesion.

26. P-B3	K-B3
27. K-B2	P-K5
28. NPxP	NPxP
29. PxP	N-K4

This aggressive try barely fails against White's accurate play.

30. QxBP	R-Q2
31. Q-N8	BxP
32. Q-R8ch	K-B4
33. P-KR3	

On 33. QxP?, White gets zapped by 34. N-N5ch!

33. ...	R-Q3
34. P-B5	

If 34. Q-R7ch, R-N3; 35. QxRP, Black gets a decisive attack by 35. ... P-B6! A typical line is 36. PxP, BxP; 37. Q-N8, R-N7ch; 38. K-B1, R-R7 with the threat of B-K7ch, and N-B6 mate (Henley).

34. ...	R-N3
35. Q-B8ch	K-K3
36. Q-Q6ch	K-B4
37. Q-B8ch	K-K3

Draw

A fine performance by Henley.

It is no great secret that Larry Englebretson has remained a staunch supporter of the Dunst Opening (1. N-QB3) in the face of considerable criticism from his contemporaries. Last month, Larry provided us with his side of the argument. This month we have a rebuttal.

HOUSTON CHESS CLUB QUADRANGULAR
HOUSTON, JUNE, 1973

L. Englebretson	R. Henley
White	Black
1. N-QB3	P-Q4
2. P-K4	P-Q5
3. QN-K2	P-K4
4. N-KB3	N-QB3
5. N-N3	B-K3

This is actually a defensive move. The aim is to prevent 6. B-B4.

6. B-N5	P-KB3
7. O-O	Q-Q2

The Queen does not stand particularly well here. It would be better to play 7... Q-Q3 so that the Knight is not pinned after Black castles long.

8. P-QB3!

This move pinpoints the inaccuracy of Black's last - the Knight at QB3 will be unable to participate in the defense of the center.

8. ...	KN-Q2
9. PxP	PxP
10. P-Q3	O-O-O
11. P-QN4	P-KR4

A necessity. Black must seek compensation for White's coming attack on the Queen-side.

12. B-N2	Q-Q3
----------	------

Perhaps 12... B-N5, or P-R5 was better.

13. BxN	NxB
14. P-QN5	N-K4
15. NxP	B-N5
16. Q-R4?	

Blissfully optimistic, White "attacks" on the

Queen-side. But in reality, the text allows Black's knight to become fatally active. The Pawn that it wins in the process is by contrast of little importance.

- | | |
|------------|------|
| 16. ... | NxP |
| 17. B-B3 | Q-B4 |
| 18. N/3-K2 | B-Q3 |

By now it's clear that White's game has fallen ill.

- | | |
|-----------|---------|
| 19. KR-Q1 | N-B5(?) |
|-----------|---------|

It was certainly simpler to win immediately with 19. BxN.

- | | |
|------------|------|
| 20. KR-QB1 | BxN |
| 21. B-N2 | Q-N3 |
| 22. R-B6 | |

In time trouble White tries to confuse things-but without success. The remaining moves were:

- | | |
|----------|------|
| 22. ... | PxR |
| 23. NxP | B-B4 |
| 24. R-B1 | BxNP |
| 25. RxB | BxQ |

0-1

Another good game by Henley!

It is with great pleasure that we include the following game, played and annotated by our present state champion, John Hall.

TEXAS STATE CHAMPIONSHIP
DALLAS, 1973

- | | |
|----------|----------|
| J. Hall | F. Payne |
| White | Black |
| 1. P-Q4 | N-KB3 |
| 2. P-QB4 | P-KN3 |
| 3. N-QB3 | B-N2 |
| 4. P-K4 | P-Q3 |
| 5. B-Q3 | O-O |
| 6. KN-K2 | N-B3 |

So that if 7. P-Q5, then 7. ... N-K4, obtaining the two bishops.

7. P-B3

Transposing into a Samish, but with one important difference - usually White has played B-K3, not B-Q3. This allows Black to strike effectively against White's weakened Q4 square.

- | | |
|-----------|-------|
| 7. ... | P-K4 |
| 8. P-Q5 | N-Q5 |
| 9. B-K3 | N-R4 |
| 10. Q-Q2 | P-QB4 |
| 11. PxPep | PxP |
| 12. N-N3? | |

Although this move is thematic in the Samish, here it is clearly premature. Better seems simply 12. O-O.

- | | |
|---------|-------|
| 12. ... | N-B5! |
|---------|-------|

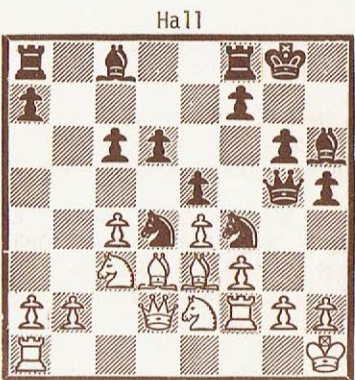
Now if 13. BxN(KB4), PxB; 14. QxP, then 14. ..B-K4! is too strong: (a) 15. Q-R6, Q-B3; threatening 16. ... B-B5, or (b) 15. Q-Q2, Q-R5; 16. K-B2, P-KB4 - of course if 16.0-0-0, then 16. B-B5.

- | | |
|----------|-------|
| 13. O-O | Q-N4 |
| 14. K-R1 | P-KR4 |
| 15. R-B2 | B-KR3 |

Planning a surprise.

- | |
|------------|
| 16. N/N-K2 |
|------------|

(See if you can find what Black plays now-Editor)



Payne
Position after 16. N/N-K2

16. ... NxB!
 17. BxQ NxRch
 18. K-N1 BxB
 19. P-B4

The best try, but nothing really helps. If 19. QxB, then 19...N-R6ch recovers the Queen with a whole Rook extra.

19. ... N-R6ch
 20. K-R1 NxP

The complications are over with Black having the material advantage of a Rook, two Bishops, and a Pawn for the Queen. The rest is a matter of technique.

21. NxN(Q4) N-K3
 22. Q-KB2 PxN
 23. N-Q1 P-QB4
 24. P-KR4 B-B5
 25. P-KN3 B-K4
 26. K-R2 P-B4
 27. PxP RxP
 28. Q-N2 R-N1
 29. Q-Q2 R-B6
 30. N-B2 BxPch
 31. K-R1 B-N2
 32. Q-R6 RxN dis ch
 33. K-N1 R-N7ch
 34. K-R1 R-R7ch
 35. Resigns

Our thanks to John for these annotations.

Texan Wilson Neil sends us a game with a pretty combination at the end.

White: Wilson Neil
 Black: Kent Parson
 Amarillo Chess Club Challenge Game

1. P-K4 P-QB4 2. N-QB3 P-Q3 3. B-B4 P-K3
 4. KN-K2 N-KB3 5. P-Q4 PxP 6. NxP P-QR3
 7. P-QR4 B-K2 8. O-O O-O 9. Q-K2 B-Q2 10. P-K5
 PxP 11. QxP N-B3 12. NxN BxN 13. R-Q1 Q-B1
 14. B-Q3 R-Q1 15. Q-N3 B-Q3? 16. BxPch KxB
 17. RxB Q-B2 18. Q-Q3ch K-N1 19. B-B4 RxR
 20. BxR Q-Q2 21. R-Q1 N-Q4 22. N-K4 BxP
 23. Q-KN3 BxP 24. RxN! BxN 25. B-B8!

and Black resigned.

For this game, Robert Brieger received a brilliancy prize.

DAYS OF '47 OPEN
 SALT LAKE CITY, JULY, 1973

R. Brieger White	J. Loftsson(Iceland) Black
1. P-K4	P-QB4
2. P-QB3	N-KB3
3. P-K5	N-Q4
4. P-Q4	PxP
5. PxP	P-Q3
6. P-KB4	N-QB3
7. N-QB3	PxP
8. BPxP	P-K3

Black could adopt an Alekhine-like formation with 8...B-B4.

9. N-KB3	B-K2
10. B-QB4	N-N3
11. B-N3	O-O
12. O-O	B-Q2
13. P-QR3	N-R4
14. B-B2	B-B3
15. B-R6!	

Brieger always has his eye on the opponent's King! If the Bishop is taken, Q-Q3 mates.

15. ...	R-K1
16. Q-Q3	

Resisting the temptation to play 16. BxNP!?

16. ...	P-N3
17. N-Q2	R-QB1
18. Q-K3	P-B4
19. PxPep	BxP
20. RxB!	

The beginning of a combination based on the weakening of the dark squares.

20. ...	QxR
21. R-KB1	Q-R5
22. P-KN3	Q-R6
23. N(2)-K4	

It's that famous Brieger Knight again!

23. ...	N(R4)-B5
24. Q-B4	N-Q3!
25. P-Q5!	P-K4
26. N-B6ch	K-R1
27. Q-N5	N-B2
28. NxR!!	

This pretty Knight move wins, for if 28...NxQ, then 29.R-B8 is mate. Best is 28...QxRch, 29. KxR, NxQ, although 30. N-Q6! wins. Both players are now in excruciating time-trouble, and Loftsson plays

28. ... QxB?
29. QxQ?

Naturally, 29. Q-B8ch (or RxN) lead to mate. Brieger, however, has other ideas...

29. ... NxQ
30. R-B8ch

"Mate!", shouted Brieger, but

30. ... N-N1!

Bumfuzzled by this turn of events, Brieger reverts to his normal self (grabs the nearest piece)...

31. PxB PXP
32. B-N3 N-Q4
33. NxN PxN
34. BxP Resigns

and all's well that ends well! Good game by the Texas Flash.

From the World Open held this past June in New York City, here is Eric Bone's WIN over International Grandmaster Herman Pilnik of Argentina.

THE WORLD OPEN
NEW YORK, JUNE, 1973

E. Bone White	H. Pilnik Black
1. e4	c5
2. Nc3	Nc6
3. g3	g6
4. Bg2	Bg7
5. d3	d6
6. Be3	Nd4

Compare with the game Bone-Shean in last month's issue.

7. Qd2 Qa5
8. Nge2 Ne2:
9. Ke2:

The only way to avoid material loss, but not

9. Nf6
10. Bh6 O-O
11. h3 Rb8
12. Bg7: Kg7:
13. f4 e6
14. Raf1 Ng8
15. f5 !? ef5:
16. ef5: c4

It is hard to understand why Black refuses the pawn. Did he fear an exchange sacrifice? For example, 16. ... Bf5: 17. Rf5: gf5: 18. Qg5+ Kh8 19. Qf5: f6 20. Be4 Qc7 21. Nd5 Qg7 and Black should win.

17. fg6: cd3:+
18. Qd3: Qe5+

Probably to keep the King in the center,

19. Kd1 hg6:
20. Re1 Qc5
21. Ne4 Qa5
22. g4 Be6

On 22. ... Qa2:, 23. Qd4+ is crushing.

23. Ng3 Qb4
24. b3 Rfc8
25. Re4

White now has a definite advantage. Not only are his pieces more mobile, but Black's d-pawn is weak.

25. ... Qc3

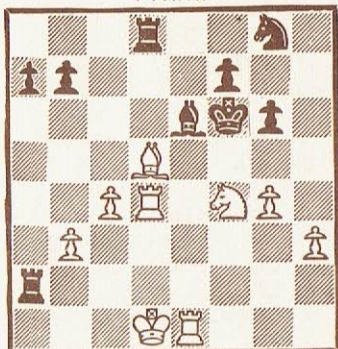
Exchanging Queens leads to a lost endgame, but there is nothing better.

26. Qc3: Rc3:
27. Ne2 Rc5
28. Rd4 d5
29. Re1 Ra5
30. Nf4 Kf6

On 30... Ra2:, White will win the d-pawn after 31. Ne6:+ fe6: 32. Re6:. But after the text, he's in for worse.

31. Bd5: Rd8
32. c4 Ra2:

Pilnik



Bone

Position after 32. ...Ra2:

33. g5+ ! Kg5:

On 33. ... Ke7, 34. Ne6: wins easily.

34. Re6: Rd5:

This way Black loses the exchange rather than a whole piece. But in any case he is lost - and the rest requires no further comment.

35. Rd5:+ Kf4:
 36. Rd6 Ne7
 37. Rd4+ Ke5
 38. Rd7 Nf5
 39. R4d5+ Ke4
 40. Rd2 Ra8+
 41. Ke2 f6
 42. Rb7: g5
 43. Rb8 Ng3+
 44. Kf2 Nh5
 45. Re8+ Kf5
 46. Re1 Ra6
 47. c5 Rc6
 48. Rd5+ Kg6
 49. b4 Rc7
 50. R1d1 Nt4
 51. Rd7 Rc8
 52. Rd8 Rc6
 53. R1d6 Rc7
 54. R6d7 Rc6
 55. Ra7: Na3:+
 56. Kg3 Nf4
 57. Rd6 Rc8
 58. c6 Rh8
 59. c7 Rh3+

60. Kf2 Rc3
 61. Rd8 Rc2+
 62. Ke3 Resigns

An exemplary performance by Bone.

Rising Junior Bill Reuter sends us this game.

White: G. Waddel
 Black: B. Reuter

1. e4 e5 2. Nf3 Nc6 3. Bb5 a6 4. Ba4 Nf6
 5. 0-0 Be7 6. Re1 b5 7. Bb3 0-0 8. c3 d5
 9. Bd5:? Nd5: 10. ed5: Qd5: 11. Qe2 Bb7!
 12. d3 Rad8 13. Rd1 f5 14. Ne1 Rf6? 15. Bg5
 Re6 16. Be7: Ne7: 17. d4? e4 18. Qe3 f4!
 19. Qf4: Rf8 20. Qc7: e3 21. f3 e7 22. Rc1?
 Qg5 23. Rc2 Bf3: 24. Qg3 Bd5! 25. Nd2 Qd2:!
 White resigns.

Thanks to Bill McCarty for this game from the July issue of the Odessa Chess Newsletter.

White: Carl Rutz
 Black: A. B. Hailey
 Correspondence Match

1. e4 c5 2. Nf3 d6 3. d4 cd4: 4. Nd4: Nf6
 5. Nc3 g6 6. f3 Bg7 7. Be3 0-0 8. Qd2 Qc7
 9. Be2 Nc6 10. 0-0-0 Bd7 11. h4 h5 12. Rdg1
 Ne5 13. g4 hg4: 14. h5 gf3: 15. h6 Bh8
 16. Nd5! Qb8 17. h7+ Nh7: 18. Ne7:+ Kg7
 19. Bh6+ Kf6 20. Nd5 mate

HOW MANY PEOPLE DO YOU KNOW WHO PLAY CHESS AND DO NOT KNOW ABOUT THE USCF OR TCA? PROBABLY SEVERAL, RIGHT? WHY DON'T YOU GET OUT AND PROSELYTE A LITTLE FOR CHESS IN YOUR TOWN? AMATEUR OR NOVICE TOURNAMENTS ARE POPPING UP LIKE MUSHROOMS; THEY MAY FIND OUT IT'S O.K. IF THEY GET THEIR FEET WET. TRY IT OUT, FOLKS!

Here is a game from the recent Wichita Falls Open.

White: Dale McLemore
Black: John Dunning

1. d4 Nf6 2. Nf3 c5 3. e3 g6 4. c3 b6 5. Bd3 Bg7 6. Nbd2 0-0 7. 0-0 d6 8. e4 Nbd7 9. Qe2 Bb7 10. Re1 Qc7 11. Nf1 e5 12. de5: Ne5: 13. Ne5: de5: 14. Bg5 Nh5 15. Bc4 h6 16. Bh4 Nf4 17. Qe3 g5 18. Bg3 Bc6 19. f3 Rfd8 20. Red1 b5 21. Bb3 Bf8 22. Bf2 Rd1: 23. Rd1: Rd8 24. Rd2 Rd7 25. Bc2 a5 26. Qe1 b4 27. c4 Rd2: 28. Qd2: h5 29. Ne3 f6 30. Nd5 Bd5: 31. ed5: Bd6 32. g3 Nh3+ 33. Kg2 Nf2: 34. Kf2: Draw

And here is another game from Wichita Falls- but this time from the Texas Junior Championship.

White: Holder
Black: Webb

1. e4 g6 2. Nf3 Bg7 3. d4 d6 4. h3 c6 5. Nc3 a5 6. a4 Na6 7. Bc4 Nf6 8. e5 Ng8 9. ed6: ed6: 10. 0-0 d5 11. Re1+ Ne7 12. Ba6: Ra6: 13. Bg5 f6 14. Bf4 Kf7 15. Qd2 Nf5 16. Ne2 Re8 17. Ng3 Ng3: 18. Bg3:Re4 19. Re4: de4: 20. Nh2 f5 21. c3 Be6 22. Rad1 Bb3 2. Ra1 c5 24. d5 Qd5: 25. Qd5: Bd5: 26. Rd1 Ke6 27. f3 Be5 28. Be5: Ke5: 29. f4+ Ke6 30. Rb1 Bb3 31. Ra1 Rd6 32. Ra3 Rd1+ 33. Kf2 c4 34. Ke2 Rb1 35. Nf1 Rb2+ 36. Nd2 Ra2 37. Ra2: Ba2: 38. Ke3 Kd5 39. h4 Bb3 40. Nb3: cb3: 41. Kd2 e6+

0-1

Examples of a strong master faltering are rare. As reassurance that such happenings are more than mere rumor, we include the following game.

FIRST WACO CHESS CONGRESS
White: John Jacobs
Black: Ron Abplanalp

1. e4 c5 2. Nc3 Nc6 3. f4 d6 4. Nf3 Nf6 5. 5. Bb5 Qc7 6. 0-0 g6 7. Qe1 Bg7 8. d3 0-0 9. Qh4 a6 10. Bc6: bc6: 11. f5 Rb8 12. Rb1 Rd8 13. Bh6 Bh8 14. fg6: hg6: 15. Ng5 d5 16. Bf8? Nh5 17. g4 Bg4: 18. Qg4: Rf8:

19. Kh1 Bc3: 20. bc3: Nf6 21. Qh4 Rb1: 22. Rb1: Kg7 23. Re1 Rh8 24. Qf2 Qe5 25. Nf3 Qf4 26. ed5: cd5: 27. Re7: Rh3 28. Qe3 Rf3: 29. Qf4: Rf4: 30. c4 dc4: 31. Ra7 cd3: 32. cd3: Ra4 33. Rc7 Ra2: 34. Rc5: Ng4 35. d4 Rh2:+ 36. Kg1 Rd2 37. d5 Nf6 38. Ra5 Nd5: 39. Ra6: f5 40. Rd6 Kf7 41. Kh1 g5 42. Kg1 g4 43. Kh1 Ke7 44. Ra6 f4 45. Ra3 Kf6 46. Ra1 f3 47. Rb1 Kg5 48. Rb8 Kf4 49. Rb1 g3 50. Ra1 Rh2+ 51. Kg1 f2+ 52. Kf1 Rh1+ 53. Ke2 Ra1: 54. White resigns.

And now, the deciding game from the First Waco Chess Congress.

White: V. Williams
Black: W. Janes

1. d4 Nf6 2. c4 e6 3. Nc3 d5 4. cd5: ed5: 5. Bg5 Be7 6. e3 0-0 7. Bd3 c6 8. Qc2 Nbd7 9. Nf3 Re8 10. 0-0 Nf8 11. Rb1 Bg4 12. Nd2? (Ne5!) Bh5 13. b4 Bg6 14. b5 c5 15. Bg6: hg6: 16. dc5: Bc5: 17. Nb3 Bb4 18. Bf6: gf6: 19. Rbc1 Rc8 20. Qd3 Bc3: 21. Rc3: Rc3: 22. Qc3: Nd7 23. Qd4? Nb6 24. a4?? Re5 25. Qd3 Ra4: 26. Nc5 Rb4 27. Nb7: Qd7 28. Na5 Qb5: 29. Qb5: Rb5: 30. Nc6 a5 31. Ra1 a4 32. Kf1 Kf8 33. Nd4 Rb2 34. Ne2 a3! 35. Nc3 Nc4 36. Nd5: a2 37. Nc3 Nd2+ 38. Ke1 Rb1+ 39. Kd2: Ra1: 40. Kc2 Rf1 41. Na2: Rf2:+

0-1

Texan William Coe, who finished second behind Tom Snow in the 1973 San Antonio City Championship, sends us this game.

White: William Coe
Black: Blake Stevens

1. e4 c5 2. Nf3 d6 3. d4 cd4: 4. Nd4: Nf6 5. Nc3 g6 6. Be3 Bg7 7. f3 0-0 8. Qd2 Nc6 9. Bc4 Na5 10. Bb3 Nb3: 11. Nb3: Be6 12. h4 h5 13. 0-0-0 Bb3: 14. ab3: Qa5 15. Kb1 Rfc8 16. g4 hg4: 17. h5 gh5: 18. fg4: Ng4: 19. Bd4 Bh6 20. Qg2 Qg5 21. Rh3 e5 22. Bg1 Kh7 23. Rf1 f5 24. Rf5: Qc1+ 25. Kh2 Rg8 26. Nd5 Raf8 27. R3h5: Rf5: 28. Rf5: Rg7 29. Ba7: Ne3 30. Nf6+ Kh8 31. Qh3 Nc2: 32. b4 Nb4+ 33. Kb3 Rg3+ 34. Qg3: Qc2+ 35. Kb4: Bd2+ 36. Ka3 Bb4+ 37. Kb4: Qb2:+ 38. Qb3 Black forfeits on time.

Upon learning of J. C. Thompson's recent return to Texas, we asked him for a biographical sketch and one of his games. His reply, in the form of a letter to TCA President John Lyon, is given below.

"Born 1910 in Hillsboro, Texas. Began playing chess in the Dallas YMCA Chess Club at age 17. Progress rather slow until I ran into Nimzovich's "My System," undoubtedly still one of the best chess books ever written. Won the Dallas city championship several times, beginning in 1930. Placed second in the 1932 Texas championship. Organized the Texas Chess Association in 1935 and for the next sixteen years was either President or Secretary-Treasurer. In 16 Southwestern Opens I was first seven times, second six times, third once, fourth once and fifth once.

Probably my best effort was in the preliminary rounds of the 1940 USCF Open, played at Dallas. In a nine-round round robin I tied for first with Ruben Fine, then among the top three or four players in the world. I lost one game and drew with Fine whereas he had three draws.

However, the performance that gave me the most satisfaction was the 1949 Southwestern Open, played at Tulsa. Although since 1940 I had never finished lower than second, there was considerable speculation as to how much longer I could meet the challenge of the younger players, especially Kenneth Smith. At Tulsa both Ken and I were underdogs, since the entrants included several outstanding Players, among them Robert Steinmeyer, at that time one of the strongest players in the country. I managed to beat Ken in the fifth round and Steinmeyer in the sixth, winning the tournament with six wins and a last round loss to Lee Magee, the Nebraska champion."

"P.S. I should explain that my company transferred me away from Texas in 1952, to Canada (Calgary), and from there to Montana, New York, Venezuela, Turkey, Singapore, and Libya where I retired a few months ago. I have played very little serious chess since 1952 but intend to try to get back into shape."

White: J. C. Thompson
Black: J. Jurevics
I Waco Chess Congress

- | | |
|----------|-------|
| 1. P-Q4 | N-KB3 |
| 2. N-KB3 | P-K3 |

- | | |
|----------|-------|
| 3. P-B4 | P-QN3 |
| 4. P-KN3 | B-N2 |
| 5. B-N2 | B-K2 |
| 6. O-O | O-O |
| 7. N-B3 | Q-B1 |

MCO gives 7...N-K5! 8. Q-B2, NxN; 9.QxN,P-KB4

- | | |
|-----------|-------|
| 8. Q-Q3 | P-Q4 |
| 9. B-N5 | PxP |
| 10. QxP | QM-O2 |
| 11. QR-B1 | P-KR3 |
| 12. B-B4 | P-B4 |
| 13. N-QN5 | |

White has a freer game and now tries to take advantage of possible threats against Black's QR and also to discourage PxP.

- | | |
|----------|-------|
| 13. ... | B-Q4 |
| 14. Q-R4 | Q-B3 |
| 15. Q-R6 | P-KN4 |
| 16. B-K3 | N-N5 |
| 17. B-Q2 | KR-B1 |
| 18. N-B3 | Q-N2 |
| 19. Q-Q3 | B-QB3 |

Black wants to preserve his strong QB but allows White to increase the pressure on the center.

- | | |
|-----------|---------|
| 20. P-K4 | N(5)-B3 |
| 21. KR-K1 | R-Q1? |

Black, in time trouble, overlooks that his KB would be hanging after 22...PxP; 23. PxP

- | | |
|-----------|---------|
| 22. P-Q5 | P-N5 |
| 23. PxP | QxP |
| 24. N-R4 | N-K4 |
| 25. Q-K2 | N-Q6 |
| 26. P-K5 | NxR(B8) |
| 27. BxN | N-Q4 |
| 28. NxN | PxN |
| 29. QxPch | K-B1 |

If 29...K-R2; 30. N-B5, R-KN1; 31. NxB!

- | | |
|----------|------|
| 30. N-B5 | B-N4 |
|----------|------|

30... Q-N3 isn't much better: 31. BxPch, K-K1; 32. N-N7ch, K-B1; 33. N-K6ch followed by QxQ and NxR.

- | | |
|------------|---------|
| 31. P-KR4 | BxB |
| 32. Q-N7ch | K-K1 |
| 33. Q-N8ch | Resigns |

In view of QxPch and N-K7ch.

CLUB LISTING

This list is by no means exhaustive. Nor can we guarantee its accuracy, compiled as it was from a variety of sources, some cobwebbed. We ask for the following from individuals and clubs not listed: the names and addresses of all Texas clubs not appearing here, and from all clubs: information on your organization, correct address, meeting time and location, any regular or semi-regular publications, number of members, etc., and the name of a correspondent who will volunteer to keep the TCA informed on your club's activities. Your newsletter, to the TEXAS KNIGHTS Editor, will ensure that your club's events and people do not go unrecognized. Please remember the importance of continuing communication. From this list we hope to move forward to a truly representative TEXAS CHESS ASSOCIATION.

DALLAS - FT. WORTH:

TEXINS CHESS CLUB - %MARIO LORRE, 3217 RIDGE-LAKE LANE, PLANO 75074
NATIONAL CHESS ASSEMBLAGE - %FRANK MATHEWS, 4827 LEMMON AVE, DALLAS 75219
TERRELL CHESS CLUB - %DON MAZY, 816 NORTH VIRGINIA, TERRELL 75160
DALLAS METROPOLITAN CHESS CLUB - 4105 LEMMON AVE, DALLAS 75219
DALLAS CHESS CLUB - 5513 1/2 E. GRAND, DALLAS
TARRANT COUNTY JR. COLLEGE CHESS CLUB - 6913 STEPHENS HILL ROAD, FT. WORTH 76119
GREATER FT. WORTH CHESS CLUB - BOX 6218, FT. WORTH 76115

HOUSTON - GALVESTON

HOUSTON CHESS CLUB - 4714 FANNIN, HOUSTON 77004
SPACE CITY CHESS CLUB - BOX 58664, HOUSTON 77058
HOUSTON CHESS ASSOCIATION - 3405 N. SHEPHERD, HOUSTON 77018
ROYAL FOX HUNTERS' GOLF, CHESS AND MARCHING SOCIETY - BOX 70, ADDICKS 77410
TEXAS CITY CHESS CLUB - NO INFORMATION
SAN JACINTO CHESS CLUB - %L.D.LAFFERTY, 26502 MAPLE WD - OAK RDG., SPRING 77373

SAN ANTONIO:

SAN ANTONIO CHESS CLUB - BOX 7231, SAN ANTONIO 78207
ALAMO CHESS CLUB - %W. POUNDSTONE JACKSON, 506 WALTON AVE., SAN ANTONIO 78225

WEST TEXAS - PANHANDLE:

ODESSA CHESS CLUB - 2615 BUCHANAN AVE,

ODESSA 79763

AMARILLO CHESS CLUB - 2111 TRAVIS, AMARILLO 79109
RHA CHESS CLUB - TEXAS TECH U., BLEDSOE HALL OFFICE, LUBBOCK 79406
ABILENE CHESS CLUB - %BOYD ROGERS, 2642 GARFIELD AVE, ABILENE 79601
CHESS CLUB OF EL PASO - BOX 3417 STATION A, EL PASO 79923
LUBBOCK CHESS CLUB - % REESE AFB, MATHIS RECREATION HALL, LUBBOCK 79413
GOLIAD CHESS CLUB - 510 E. 17TH, BIG SPRING 79720
BRONTE- TENNYSON CHESS COMMITTEE - NO INFORMATION EXCEPT TENNYSON 76953
CHESSPLAYERS OF MIDLAND - 705 ALPINE, MIDLAND
CHESSPLAYERS OF MONAHANS - 314 S. ALICE, MONAHANS

NORTH TEXAS:

AUSTIN COLLEGE CHESS CLUB - HOPKINS LIBRARY, AUSTIN COLLEGE, SHERMAN 75090
WICHITA FALLS CHESS CLUB - %MAURICE ALLRED, 314 OIL & GAS BLDG., WICHITA FALLS 76301
MINERAL WELLS CHESS CLUB - %JUDY MILLER, 1601 N.W. 1 AVE., MINERAL WELLS 76067
NORTH TEXAS STATE U. CHESS CLUB - % WM. WILLIAMS, 308 BRADLEY, #3, DENTON 76201

EAST TEXAS:

STEPHEN F. AUSTIN ST. COLLEGE CHESS CLUB - %KENNETH U. HACKNEY, 306 NORTHGATE DRIVE, NACOGDOCHES 75961
BLACK KNIGHTS - %EDWARD KENT, 116 WHITE HALL HUNTSVILLE 77340
BEAUMONT CHESS CLUB - %SAMUEL LOVETT, 1540 AVENUE A, BEAUMONT 77701
ORANGE CHESS CLUB - 1009 RUBY LANE, ORANGE 77630
GOLDEN TRIANGLE CHESS CLUB - NO INFORMATION

CENTRAL TEXAS:

CORSICANA CHESS CLUB - %DARRELL JOHNSON, MEDICAL ART CLINIC, BOX 841, CORSICANA 75110
GREATER WACO CHESS CLUB - %PAUL R. ESSENBURG, 3701 WINDSOR, WACO 76708
UNIVERSITY OF TEXAS CHESS CLUB - NO INFO.
TEXAS AGM CHESS COMMITTEE - BOX 5718, COLLEGE STATION
CORPUS CHRISTI CHESS CLUB - %TOM WEAVER, 4506 CARROLL LANE, CORPUS CHRISTI 78415

SOUTH TEXAS - RIO GRANDE VALLEY:

NO INFORMATION ON THESE CLUBS OR GROUPS

COMING ATTRACTIONS

September 1-2-3 SOUTHWEST OPEN CHAMPIONSHIP (Houston)

(See ad, pgs.2-3)

In two sections and two locations. OPEN at Holiday Inn, 4640 So Main St, Houston, 77002. NOVICE at HoustonCC, 4714 Fannin, Houston, 77004. OPEN, Open to all; NOVICE, open to all under 1300 or unrated.

OPEN: 7-SS, 40/2 (1st two rds accelerated) EF: \$17, \$15 to HS or Pre HS if mailed by Aug 25- both \$3 more at the tournament. PRIZES: 1st \$500, 2nd \$350, \$200, \$150, \$75; A \$125, 75, 35; B \$100, 50, 30; C \$75, 40, 20; D/E \$60, 30, 15; unr. \$50, 20. Trophies to 1st, top Exp., A,B,C,D/E, unr., woman, over 50, under 20, under 16. Reg: 8:30 - 10:30AM 9/1, rds. 12-8, 10-3-8, 9:30-2:30. Bring sets and clocks.

NOVICE: 5-SS, 50/2. EF: \$9.50, \$6.50 HS or Pre HS if mailed by Aug 25- both \$3 more at the door. PRIZES: \$50, 30, 10, unr. 20. Trophies to top 3, top unr., under 15. Reg: 8:30-9:30 AM 9/1, rds. 10-2:30-7:30, 9:30-2:30. Bring clocks.

Both: TCA mem. req. (\$3. jrs. \$2.) Annual TCA meeting and election of officers at Holiday Inn between rds. 1-2 of Open Section. Hotel rates: 12, single; 20, double; 23 for 3, 26 for 4. Make room res. directly with hotel. Mail all pre-entries to Lynn Babcock, Houston Chess Club, address above; make checks payable to Houston Chess Club.

September 8-9 FALL SENIOR OPEN (18 or older) (San Antonio)

5-SS, EF: \$12, if paid by Sept 1; \$15 at the door. Location: Downtown Travelodge, across from the courthouse, \$15, single, \$20 double. USCF & TCA required. Reg: 8-9 AM, Sept 8. Rds: 9:30-2:30-7:30, 9:30-2:30. PRIZES: \$100, 75, 50, 25, and also for juniors Sponsor: Alamo CC. ENT: W. Poundstone Jackson, 506 Walton Ave., San Antonio 78225. Juniors over 18 invited; if enough juniors register, there will be a separate tournament for them. Bring sets and clocks.

September 15-16 NATIONAL CHESS ASSEMBLAGE CLASSIC

Ramada Inn N.W., 13333 N. Stemmons Freeway, Dallas 75234. In 3 sections: MASTERS & EXPERTS AMATEUR, and NOVICE.

MASTERS and EXPERTS: 4-SS, 40/2 Open to all 1800 or over. EF: \$20, if mailed by 9/9, \$24 if paid at event. All entry fees except late checks returned as CASH PRIZES. 50% 1st 30% 2nd, 20% 3rd, plus medals. ENT: Closes 9:30 am 9/15. Rds: Sat: 10:30-5, Sun. 9-3:30.

AMATEUR: 5-SS, 1st Rd 40/1½, other rds 40/2

September 22-23 1973 BIG SPRING OPEN

5-SS, 50/2, USCF and TCA, Settles Hotel, downtown Big Spring. EF: \$10, jrs. and 1st time players \$8. Reg: 8:00-9:00 am, 9/22. Cash prizes and trophies according to entries. TDS: Bill McCarty, 2615 Buchanan Ave., Odessa, 79763 and Mike Craddock, Box 1084, Big Spring, 79720. Sponsor: Odessa Chess Club. Extremely nice playing conditions and accommodations for 6.50/single and \$8.50/double if you tell them you are an entry.

September 29-30 TARRANT COUNTY JUNIOR COLLEGE SOUTH CAMPUS CHESS CLUB OPEN CHESS TOURNAMENT (Fort Worth)

5-SS, 45/2. Location: Tarrant County Junior College Student (South Campus), 5301 Campus Dr., Fort Worth 76119. EF: \$12 or \$10 if received before Sept. 22. USCF & TCA req. Reg: 8-9 AM 9/29. Rds: 10-2:30-7, 10-3. PRIZES: As entries permit; the more people, the more loot ENT: Bobby W. Abshire, 6913 Stephens Hill Rd., Fort Worth, 76119, 293-4121.

October 19-20-21, or
November 2-3-4

Chess-Plus is interested in organizing a tournament on one of these weekends limited to the top 26 players expressing an interest. The following players have indicated an interest so far: Ken Smith, Tom Dunning, Fred Payne, Bob Moore, and John Jacobs. There would be one round played on Friday evening, and two rounds each on Saturday and Sunday. Entry fee: \$30. PRIZES: \$250 (plus medal) for

AND STILL MORE ...

October 27-28
ABILENE OPEN
(Abilene!)

TEXAS OPEN (Cont.)

5-SS, 50/2, Thunderbird Lodge, East Highway 80, Abilene. EF: \$10, \$8 under 21. USCF & TCA req. Tournament in two sections: Open & Junior. PRIZES: \$100 1st in Open, others as entries permit; \$50 1st in Junior, others as entries permit. Reg: 8-8:45 AM 10/27. Rds: 9-2-7, 9-2. TD: Garland Cranfill, sponsor, Abilene CC. ENT: Garland Cranfill, 518 Woodlawn, Abilene.

16/single, 20/double if reserved two weeks in advance. ENT: Corpus Christi Chess Club, President Domingo Quintanilla, 3701 Capri, Corpus Christi 78415, make hotel reservations thru the Chess Club; make checks payable to the Corpus Christi Chess Club. TDS: David Willis and Tom Weaver. Bring sets & clocks.

November 10-11
MIDWESTERN UNIVERSITY OPEN
(Wichita Falls)

December 15-16
1973 PERMIAN BASIN OPEN
(Odessa)

5-SS, 50/2, Midwestern University Student Center Ballroom, Wichita Falls. EF: \$10, \$8 if received by 10/25; USCF & TCA req. PRIZES: as entries permit. Reg: 8-9 AM 11/10. Rds: 9:30-2-7, 9-1:30. Rooms available at Dorms, \$4/night (bring pillow & blanket). ENT: W.R. Winters, 1619 Christine, Wichita Falls, 76302. TD: W. R. Winters.

5-SS, Odessa College, Odessa. EF: \$6, USCF and TCA required. Prizes as entries permit. Reg: By 9 AM 12/15. Rds: 9:30-1:30-7:30, and 9:30-1:30. ENT: Odessa CC, 2615 Buchanan, Odessa 79763

November 17
BUDDIN' SUPERSTARS SWISS
(Odessa)

3-SS, Odessa College, Odessa. Restricted to below 1400 and unr. EF: \$3, USCF & TCA required. Book prizes and trophy as entries permit. Reg: 9 AM. ENT: Odessa CC, 2615 Buchanan, Odessa 79763

As you may have noticed, there are several abbreviations used repeatedly throughout the the tournament announcements. The following list explains these terms.

CC: Chess Club

EF: Entry Fee

ENT: Where to send entries. When mailing entries, always include full name, full address, rating and USCF expiration date. Rds: Rounds. This usually appears just before the schedule of games.

Reg: Registration period, usually two times specifying the beginning and end of this period.

SS: Swiss System. A pairing system in which players with similar scores are paired in each round except the first, when ratings determine pairings.

Time limit (TL): Rate of play. Given as, for instance, 40/2, meaning 40 moves in two hours.

Unr: Unrated. Unrated players are accepted in tournaments and frequently may win special prizes. Players receive ratings after their first tournament.

November 23-24-25
TEXAS OPEN
(Corpus Christi)

6-SS, 45/2, Crown Room of Sheraton Marina, 300 N. Shoreline, Corpus Christi, Tx. EF: \$15 USCF & TCA req. (out- of-staters don't need TCA). PRIZES: \$300, 200, 100; Exp. \$150, 75; A \$125, 50; B \$100, 50; C \$75; D \$50; unr. \$75, 50. Trophies to 1st & 2nd, 1st Exp., 1st A, B, C, D, and 1st unr. Reg: 11 AM to 1 PM, 11/23. Rds: 2-7:30, 9-2-7:30, 1. Rooms

TEXAS CHESS ASSOCIATION

President: John C. Lyon, 2511 Crescent Drive,
La Porte, TX 77571
Vice-Pres: Paul R. Essenburg, 3701 Windsor,
Waco, TX 76708
Secretary-
Treasurer: Clarence Callaway, Jr., Box 1576,
Irving, TX 75060

The TCA is a non-profit organization for the promotion of chess in the State of Texas, and the state affiliate of the United States Chess Federation. The official publication of the TCA is TEXAS KNIGHTS.

Membership: Resident membership is available to any Texas resident, with privileges including a TEXAS KNIGHTS subscription and voting rights at any General Meeting of the TCA. Associate membership is available to non-residents, without voting rights. Dues: For both types, \$3 per year, \$2 for juniors (under 21 at expiration). Please send all renewals, membership applications, and changes of address to the Secretary-Treasurer, address above.

TEXAS KNIGHTS: Published monthly, mailed at Dallas, Texas.

Editor: Steven D. Moffitt, 2218 Dorrington,
Houston, TX 77025

Contributions of written material of general chess interest are encouraged. Games, articles, tournament reports and announcements, letters, etc., will all be considered for publication.

Advertising rates: \$30 for full page, \$18 for half page. Frequency discounts and other information: contact Editor at address above.

AN IMPORTANT REMINDER

September is on the horizon, and that means SOUTHWEST OPEN time for the TCA. The annual TCA general meeting will be held at the Holiday Inn in Houston between Rounds I and II of the Open, and all organizers and Clubs are reminded that the 1974 TCA tournaments are subject to bid at the meeting: the Texas Championship and Amateur in February (Washington's Birthday weekend), the Texas Junior in July, the Southwest Open on the Labor Day weekend, and the Texas Open on Thanksgiving weekend. Start planning now to get one of these important events for your area.

TCA TOURNAMENT
CALENDAR

SEPT 1-3	HOUSTON	7 round SS
SEPT 8-9	SAN ANTONIO	5 round SS
SEPT 22-23	BIG SPRING	5 round SS
SEPT 29-30	FORT WORTH	5 round SS
OCT 27-28	ABILENE	5 round SS
NOV 10-11	WC'TA FALLS	5 round SS
NOV 17	ODESSA	3 round SS
NOV 23-25	CORPUS	6 round SS
DEC 15-16	ODESSA	5 round SS

Don't forget the TEXAS OPEN over Thanksgiving weekend. Details in coming issues.

GO WITH THE TCA. WITH A MEMBERSHIP OF MORE THAN 1000 IN THE SOUTHWEST, WE REACH MORE TOURNAMENT PLAYERS MORE QUICKLY THAN ANY OTHER CHESS PERIODICAL. TCA SPONSORSHIP GIVES ORGANIZERS FREE ADVERTISEMENT FOR THEIR EVENTS. YOU CAN'T GO WRONG.