

# TEXAS KNIGHTS

The Official Publication of the Texas Chess Association

\$ 2

Volume 43, Number 1

P.O. Box 501 Helotes, Texas 78023

September-October 2001



## Selby Anderson repeats as San Antonio champion

Shulman Annotates – GM Yury Shulman .....	p. 3
Denker Tournament of High School Champions – Chris Glaser.....	p. 5
U.S. Junior Open – Texas youths win honors in Tulsa.....	p. 7
San Antonio City Championship .....	p. 8
3rd annual Waco Open – Mario Leal.....	p. 13
Panhandle Open Too! – NM Gary Simms.....	p. 14
Texas Middle School Challenge – Sharon Pernes.....	p. 17
Crosstables .....	p. 18
TCA Spring Minutes – TCA Secretary Enrique Rios.....	p. 20

# TEXAS CHESS ASSOCIATION

texaschess.org

**President:** Gary Gaiffe, POB 161052, Austin, TX 78716-1052, (512) 328-3638; ggaiffe@worldnet.att.net  
**Vice President:** Forrest Marler, 2109 Ave. T, Huntsville, TX 77340; (936) 291-7625; fmarler@mail.tca.net  
**Secretary:** Enrique Rios, 2700 Waterview Parkway #4818, Richardson, TX 75080; BigDaddyUTD@aol.com  
**Treasurer:** George C. John, POB 710750, Houston, TX 77271-0750; george@neosoft.com  
**Editor:** Selby Anderson, POB 501, Helotes, TX 78023-0501; (210) 699-6718; txchess@texas.net  
**Webmaster:** Enrique Rios, BigDaddyUTD@aol.com **Procurement Director:** This position is vacant.  
**Tournament clearinghouse:** Forrest Marler **Postal Chess:** Jimmy Irvin, 1710 N. Guadalupe St. Seguin, TX 78155-2063; 210-659-4851; jei78155@swbell.net

The Texas Chess Association, Inc. is a 501(c)(3) nonprofit corporation whose purpose is educational and instructional in promoting interest in chess in Texas. **Regular Membership:** \$10/yr. **Junior** (18 or under) and **Student** (with ID) **Memberships:** \$7.50. **Foreign Membership:** \$12.50 (Canada & Mexico), other foreign \$17.50. **Patron Membership:** \$25 (first class mailing of *Texas Knights* plus listing in Hall of Honor.) **Family Membership:** \$15. **Membership without *Texas Knights*:** \$5. **Club Membership:** \$25 (\$10 schools, \$40 foreign), includes one 1/4 page ad per year. Send to TCA, POB 710750, Houston, TX 77271. Give name, address, city, state and zip code.

## TCA Hall of Honor

Selby Anderson 9999  
Lynne Babcock 0502  
Brian Backlund 0402  
Mansour Bighamian 0802  
Joseph Binder 0802  
Joe Bradford 0604  
Clarence Callaway 9999  
Mike Carpenter 0202  
Carmen Chairez 1001  
Houston Chess Club 0702  
G.W. Church, Jr. 9999  
William D. Collin 1101  
Thomas Cunningham 0202  
Dr. Raymond D. Duque 0402  
Aaron Golden 0902  
Scott Griggs 1101  
Dr. Arthur Hanna 0202  
George C. John 0602  
George L. John, M.D. 0502

Carlos Lau 0502  
Rosendo Leal 0502  
Patrick Long 9999  
Forrest Z. Marler 0602  
Mark E. McCue 1101  
David H. Meier 0901  
Jonas Moen 1001  
George A. Mota 1001  
Wilson Neil 0402  
Noureddine Chess Academy 0102  
Gilberto Padilla Ortiz 0202  
John Patty 0802  
James Pemberton 0802  
Ronald E. Pohle 0901  
Robert B. Potter 9999  
Fernando Ramirez 0802  
Tim Redman 0702  
Doug & Alexey Root 1101  
Daniel Salazar 0502

Luis Salinas 0502  
Drew Sarkisian 0502  
Kelvin Shih 0802  
Gary M. Simms 0702  
Roger Simond 1201  
Mevis R. Smith 9999  
John Sneed 1201  
Duane Solley 1101  
Charles Stallings 0302  
Don Sutherland 0502  
Rodney J. Thomas 0502  
Louis Thurston 9999  
Elvis C. Vest 0202  
Paul Weatherall 0602  
David Williamson 0502  
Larry J. Young 0502  
Alfred Zerm 0802  
(Note: Contributions beyond membership fees are tax deductible.)

---

Contributors this issue: Chris Glaser, J.P. Hyltin, Mario Leal, Sharon Pernes, Enrique Rios, Luis Salinas, Yury Shulman, Gary Simms, Greg Wren.

Send submissions (paper or disk) with your phone number to P.O. Box 501, Helotes, TX 78023-0501; or e-mail to txchess@texas.net. Fax available (voice call first). Deadline next issue: October 15.

All contents of *Texas Knights* © 2001 by the Texas Chess Association, Inc. No part may be reproduced in any way without the express consent of the editor. Advertising rates: \$50/page, \$35/half, \$20/quarter, \$1/line (two column format). Paid subscribers: 461.

Cover photo: Altan Kartaltepe

# SHULMAN ANNOTATES

*Editor's note: GM Yury Shulman of Dallas tied for first with six other GMs in the 2001 World Open, held June 30-July 8 in Philadelphia. He tied with Alexander Goldin, Joel Benjamin, Ilya Smirin, Alexander Onischuk, Leonid Yudasin, and Alexander Ivanov, each scoring 7 out of 9 and winning \$3,972.15.*

## Notes by GM Yury Shulman

This game was played in the last round of the 2001 World Open. Both of us had 6.5 out of 8, so the winner of this game would be the winner of the tournament. Only Onischuk and Benjamin, who also had 6.5 out of 8 and were playing against each other, had a chance to catch up the winner.

### King's Indian E92

Yury Shulman 2568

Illya Smirin 2703

### Philadelphia 2001 (9)

1.d4 Nf6 2.c4 g6 3.Nc3 Bg7 4.e4 d6 5.Nf3 0-0 6.Be2 e5 7.Be3

This is the Gligoric variation of the King's Indian Defense. The main idea of this line is that after 7...Nc6 8.d5 Ne7 9.Nd2, White is able to put his knight on its best position: d2 instead of the usual e1, where it gets in the way of other pieces.

Black has several choices: 7...c6, 7...Na6, 7...Nbd7, 7...exd4, and line played in the game.

### 7...Ng4

In our previous game Shulman-Smirin (National Open, Las Vegas 2001) a draw was agreed after 7...exd4 8. Nxd4 Re8 9.f3 c6 10.Qd2 (10.Bf2!?) 10...d5 11.exd5 cxd5 12. 0-0 Nc6 (12...dxc4 is another try for Black) 13.c5 Rxe3! 14.Qxe3 Qf8 15.Ncb5 Qxc5 16.Rac1 Qb6 17.

Qf2 Bd7 18.Rfd1 Re8 19.Bf1 Bh6 20.Rc3 Nb4 21.a3 Na2 22.Rb3 Nc1 23.Rc3 Na2 24.Rb3 Nc1 (24...a6 25.Nc3 Nxc3 26.Rxc3 with an advantage for White) and neither side can avoid a repetition.

### 8.Bg5 f6 9.Bh4

Now Black has to solve his main problem: how to prepare attacking chances on the kingside. Black first has to get rid of the pin on his king knight. One of the choices is to play 9...Nc6, and after 10.d5 Ne7 the knight will not be pinned anymore. Another choice is to move the queen to e8, but this move weakens the c7 pawn. My opponent chooses the third option.

### 9...g5 10.Bg3 Nh6

The immediate 10... Nc6 was bad, because of 11.d5 Ne7 12.Nxg5 with a big advantage for White. [12... Nxf2 13.Bxf2 fxg5 14.Bg4 Ng6 15.g3 ±± - Ed.]



Now Black is threatening to play 11...g4, and after the knight retreats, to take pawn on d4 when White will have to take back with his queen. White has three choices to prevent it: (a) 11.h3, preventing ...g4; (b) 11.dxe5, opening the center while Black's Nh6 and Bg7 are misplaced; (c) 11.d5, closing the center, and Black's attack on the kingside is no longer so dangerous. After exf5, Black cannot take back with g-pawn and White gets the e4-square.

### 11.d5 Na6?!

I believe this is an inaccuracy. Better would be 11...Nbd7 or 11...f5. Black has to bring all his pieces to the kingside, and the best way seems to be Bc8-f5-g6, Nb8-d7-f6, and Nh6-Nf5-d4.

### 12.Nd2 f5 13.exf5 Nxf5 14. Nde4

After 14.0-0 Nd4 15.Bg4, I didn't like the strange move 15...Nb4 with idea Nd3-f4, bringing the "bad" knight into the game. But it seems that it wouldn't work for Black: 15...Nb4 16.Bxc8 Qxc8 (Or 16...Rxc8 17.Nde4 a5 18.a3 Na6 and White has an advantage) 17. Nde4 Qf5 18.a3, and the knight has to retreat.

### 14...Nd4 15.0-0

Now 15.Bg4? is impossible, because of 15...Bxg4 16.Qxg4 Nc2+.

### 15...Nxe2+

Otherwise White will be able to play Bg4 and exchange light-square bishops. That is his main idea in this position and in the most King's Indian structures.

### 16.Qxe2



This is a good position for practical training. I would recommend that the reader stop here and think for a while. First we have to evaluate the position. Material is equal, so we have to consider strategic factors: (1) White has a space advantage (2) Development is approxi-

mately equal (3) The pawn structure is of course in White's favor, because of the beautiful e4 square for his knights. (4) Black has the two-bishop advantage. (5) King safety is close to equal. (6) Black has two bad pieces: Na6 and Bg7. White has one bad piece: Bg3.

So Black can try to solve three problems with his move: he has to open the position for his bishops, improve the position of his bad pieces, and try to change the pawn structure in his favor. So the correct move comes to the mind itself: **16...g4!**, and now the bishop will go to h6. For White to bring his bishop into the game he has to play f3, which will open lines and diagonals for Black's pieces, and the static advantage of the e4 square will not be so important anymore.

**16...Bf5?! 17.f3 h5?!**

Now the g5 pawn is going to be the object of White's attack, and it cannot be protected by a pawn anymore. Even the ugly 17...h6 with the idea of bringing the queen to g6 would be better.

**18.h3!**

This is the only way to prevent 18...g4. Now White is going to bring his bishop to e3, then play g4 and Qd2, winning a pawn on g5 or forcing an Exchange sacrifice with ...Rf4. Black tries to get rid of at least one of his bad pieces, but it creates new pawn weaknesses.

**18...Nc5 19.Nxc5 dxc5 20.Bf2**

Of course not 20.Bxe5 because of 20...Re8.

**20...b6 21.Be3?**

It is hard to believe that such a nice move can be a big positional mistake. White had to think in this position: What does Black want to do? Then he would have understood that the only way Black can create any play is with ...g4. Though it is a pawn sacrifice, after that the bishop at g7 is not so bad anymore and can come to the game via h6. Also be-

cause of my bishop on e3, Black gets another chance: ...e4, as the White knight cannot be protected on e4 anymore.

Instead, White gets a huge positional advantage with 21.g4! Bg6 22.Ne4. Now my idea of Be3 and Qe2 looks very dangerous. It seems Black would have to exchange his bishop on e4, and after fxe4 defend a strategically lost position: 22... hxc4 23.hxc4 Bxe4 24.fxe4 Rf4 25. Bg3 Qd6 26.Bxf4 exf4 27.Kg2 and Black does not have enough compensation, though it seems that this was his best chance.



**21...g4!**

Excellent! Black uses his chance to get rid of a grip.

**22.fxg4 hxg4 23.hxc4**

After 23.Rxf5 Rxf5 24.Qxg4 Qd7 25.Ne4, White would have just enough compensation for the sacrificed material.

**23...Bg6 24.Rxf8+ Qxf8 25.Rf1**

25.Bg5, with the idea of preventing Black's queen from going to e7 also leaves the position unclear after 25...e4 26.Rf1 Bd4+ 27.Be3 Qg7, and Black has sufficient compensation for a pawn.

**25...Qe7 26.g5**

Maybe this is the decisive mistake which loses the whole advantage. However, Black was threatening to play 26...Qh4. Also, 25.g5 prepares the g4 square for my queen.

When I played 22.fxg4, I was going to get this position, thinking that White is almost winning: after Qg4 there is no defense against 27.Ne4 or 27.d6! cxd6 28.Nd5 with a winning position. But I overlooked a very strong answer: **26...Qd7!**

Now it is not so easy to bring my knight to e4.

**27.Nd1**

27.Bd2 can be met by 27...e4, and the e4-pawn is poisoned: 28.Nxe4 Re8.

**27...Rf8**

Here my opponent offered a draw. After 28.Rf8 Kf8 29.Qf3 Qf5 30.Nc3 (after 30. Qf5 Bf5 31. Nc3 Bd3 32. b3 e4 33. Nb5 Bb1 the position becomes very complicated, but I think it is close to a draw anyway) 30...a6, and because of the queenside weaknesses White cannot win. The best that he can achieve would be an opposite color bishops endgame (after ...e4 and ...Bxc3). I spent 15 minutes out of the remaining 20 and couldn't find a chance to continue a fight.

Though it was a draw, my opponent and I had to wait for the result of Onischuk-Benjamin to know who would be the new World Open champion. After their draw seven people tied for first, and Alexander Goldin was first in the blitz tournament tiebreak. **Draw**

*Torre Attack A48*

**Angelo Young 2402**

**Yury Shulman 2568**

*Philadelphia 2001 (6)*

**1.d4 Nf6 2.Nf3 g6 3.Bg5 Bg7 4. Nbd2 0-0 5.c3 Nc6 6.Qc2 d6 7.h3 h6 8.Bh4 e5 9.dxe5 dxe5 10.e4 Qe8 11.g4 Nd7 12.Nc4 Nd8 13. Bg3 b6 14.Ne3 Bb7 15.Bb5 c6 16. Be2 Ne6 17.Nc4 Qe7 18.0-0 Rad8 19.Rhe1 b5 20.Ne3 Nf4 21. h4 Nc5 22.Bf1 Rxd1+ 23.Rxd1**

(Continued on page 7)

# The Arnold Denker Tournament of High School Champions

by Chris Glaser

The Denker Tournament of High School Champions is held every year to put all the state champions in one room and have them compete against one another. It was a very competitive tournament, with 38 of the states represented this year. The 40/2, SD/1 time control also produced some very good chess.

Thomas J Bartell, from New Jersey, won the event with 5.5 points. Eugene Yanayt, from Massachusetts, was second with 5 points, and Daniel Rensch, from Arizona, was third with 4.5 points.

I was glad to have the honor of representing Texas this year, and taking on all the challenges that came my way every round. My final score of 3.5 out of 6 put me in tenth place. I hope to compete in the tournament again next year.

My first round game was against Dylan Smith, a promising junior representing Indiana. I hope you can see the power of the two bishops, especially in the endgame.

*Nimzo-Indian E38*

Chris Glaser 1951

Dylan Smith 1559

*Denker Tournament 2001 (1)*

1.d4 Nf6 2.c4 e6 3.Nc3 Bb4 4.Qc2 c5 5.dxc5 Qa5

I've never seen 5...Qa5 before, but it looks pretty good for Black. After all, he puts another piece on the diagonal and threatens ...Ne4. White's reply is pretty much forced.

6.Bd2 Qxc5 7.e3 d5 8.a3 Bxc3+ 9. Bxc3 Nbd7

9...dxc4 10.Bb4 ±, van Scheltinga-Golomek, Amsterdam 1959.

10.Nf3 b6 11.Qa4

This prevents Ba6, which may trade the light-squared bishops. This exchange would be favorable to Black. White would like to play Bb4 and prevent Black from castling, but he cannot maintain the bishop on that diagonal for long. Black simply plays Ne4-c5 and blocks the diagonal, permitting him to castle.

11...Bb7



12.Nd4?!

I missed Black's next move. Best is 12.Ne5! This would pretty much tie Black up, since Bb5 with additional pressure on the d7 knight is coming.

12...Ne4! 13.Bb4 Qc7 14.cxd5 Bxd5 15.f3 Ne5 16.Qc2 a5 17.Bd2 0-0

Black has pushed back the White pieces, completed his development, and gained space on the queenside. Black is better.

18.e4 Bb7 19.Rc1 Rac8 20.b4 axb4 21.axb4 Na6 22.Qa4

I hoped this would win a pawn or at least make the struggle more complex for black. Another option is 22.Qa2, but it too fails to win a pawn: 22...Qd6 23.Rxc8 Bxc8! 24. Nxe6 (the only try to win a pawn) Qxe6 25.Bc4 Qg6 26.Bxa6 Qxg2

27.Rf1 Qxh2 and White is a clear pawn down.

22...Qd6 23.Rxc8 Bxc8!

If 23...Rxc8, then 24.Bxa6 Bxa6? 25.Qxa6 and the rook on c8 is under attack. Or 24...b5 25.Nxb5 Qxa6 26. Qxa6 Bxa6 27.Nc3 ±.

24.Nxe6? (24.Bc3) 24...b5! 25. Bxb5 Qxe6 26.0-0 Nc7 27.Be2 Bb7 28.Rc1 Ra8! 29.Qc2 Ne8 30.Bc4 Qb6+ 31.Kh1 Nd6 32.Bb3 Rc8 33. Qb2 Rxc1+ 34.Qxc1+ Qc6 35.Qa1 Qa6 36.Qe1 Qd3

Black has managed to activate his pieces and has traded a pair of rooks. During the next few moves he repositions his pieces, especially his knights. He is very successful at driving all the White pieces back to the first two ranks. Meanwhile, White tries to secure his king and most of all tries to prevent a queen trade. To make problems worse, I was very short of time.

37.Bd1 Ba6!

Preventing 38.Be2.

38.Bf4 Nc8 39.Kg1 Ncb6 40.h3 Nf6 (time control) 41.Bc7 Nbd7 42.Kh2 Nf8 43.Ba4 Ne6 44.Be5 Nd7 45.Bb2 Nb6 46.Qd1



Instead of trying to keep the queens on, and being forced into a very passive position, I decide to simplify the position. Note that my king can get over to the queenside much faster than Black's. I was

counting on this to help me in the endgame.

Black, too, should get his king over to the queenside and round-up the b-pawn. First, however, he should worry about the kingside pawns. Possible fixing them with ...g5 at some point would help.

46...Qxd1+ 47.Bxd1 Nf4

Threatening ...Bf1. [Here I like 47...g5! fixing White's kingside, followed by a king walk to c6 and encirclement of the b-pawn. - SKA] 48.Kg3 Nd3 49.Bc3 Bb5 50.Bc2 Na4 51.Bd2 Kf8 52.f4

The knight on d3 will never get out.

52...Ke7 53.Kf3 Ndb2 54.Be3 Kd6 55.Bd4

Black has managed to get his knights into the White position, but they are merely tied up. Meanwhile, White has managed to keep the Black king out. However, 55.e5+ may win a pawn: 55...Ke6 56.Bxh7 g6 57.g4 Nc4 58.Bd4, etc. It seems that White will get in f5+ and free his bishop. Even if the bishop is trapped, there will probably be a very strong passed h-pawn soon. This will prove difficult for Black to stop.

55...g6 56.g4 Nd3 57.Bb3 Ke7 58.f5 Nab2

The pawn on b4 is taboo: 58...Nb4? 59.Bxa4 Bxa4 60.Bc5+ 59.e5



59...Bc4?

It is natural for Black to want to trade pieces, but this allows decisive king penetration by White. [So what is better? If Black marks time with his king, White's king goes to c2 and traps a knight.]

60.Bxc4! Nxc4 61.Ke4! Nc1 62.Kd5! Nd2 63.Bc5+ Ke8 64.Be3 Ncb3 65.b5 Nf1??

Any square is better than this! Dropping the knight back to b1 is probably best. [After 65...Nb1 66.Kd6 White seems to be winning anyway: 66...Na3 67.b6 Na5 (67...Nc4+ 68.Kc7 Nxe3? 69.b7 Nd5 70.Kd6 +-) 68.Bf4 Nb5+ (68...N3c4+ 69.Kc7) 69.Kc5 Na3 70.Kb4 N3c4 71.b7 Nxb7 72.Kxc4 ±.]

66.Bf4! gxf5 67.gxf5 h5

Threatening ...h4 and ...Ng3.

68.b6 Na5 69.h4! Kd8 70.e6 fxe6+

This loses immediately. Another way to lose is 70...Ke7 71.f6+ Kxf6 72.Bg5+ Kg7 73.e7. Probably best is 70...f6. Then White simply forces Black to trade his knight for the b-pawn, then rounds up the knight on f1, and penetrates into the enemy camp with the king.

71.Kxe6 Ke8 72.f6, Black resigns 1-0

Here is my fourth round game against Charlie Tang of Ohio. He plays a good game, though he does not see his way through all the complications.

Pirc Defense B07

Charlie Tang 2058

Chris Glaser 1951

Denker Tournament 2001 (4)

1.d4 Nf6 2.Nf3 g6 3.Nc3

I almost always play the King's Indian against d4, and don't like to play against the Pirc.

3...Bg7

Or 3...d5 4.Bg5 Nbd7, transposing to a Richter-Veresov Attack.

4.e4 d6 5.Bf4 0-0 6.Qd2 Re8!?

Since I rarely see the Pirc, I'm

not sure how to play it. Though it preserves the Indian bishop, it weakens f7. An alternative is c5.

7.0-0 Na6!?! 8.Bxa6?! bxa6

The knight on a6 may have been misplaced. After Black plays c5, it could go back to c7 and support the b5 pawn storm, but it won't do much else there. White should avoid this exchange, keep his good bishop, and not open a file on his king!

9.Bh6 Bh8 10.h3 Bb7 11.Qf4 Nh5!?

White's threat was Ng5 and then e5, deflecting the knight off f6 and mating on f7. The text move appeared to be the only way to parry the threat. However, there is a much more complex line that Black can choose: 11...e5!?! 12.dxe5 dxe5 13.Nxe5 Qe7 14.Nd3 Nxe4 15.Nxe4 Qxe4 16.Qxe4 Bxe4 and the endgame is slightly in White's favor due to his better pawn structure.

12.Qe3 Ng7 13.Ng5?!

Probably best is 13.g4.

13...e5 14.dxe5 Rxe5 15.f4 Re8 16.Qd3 d5!?



17.Bxg7 Bxg7 18.Nxd5?

This loses. Accepting the pawn sac with 18.exd5 poses Black the most problems, though Black does have the initiative. 18.exd5 Qf6 19.Rhf1 a5! (threatening 20...Ba6) 20.Nge4 Qb6 and Black is mounting a dangerous attack on b2.

18...Bxd5 19.exd5



19...Qf6!

Simply winning. [20.c3 Qxf4+ 21.Qd2 Qxd2+ 22.Rxd2 Bh6 -+.]  
20.Nf3? Qxb2+ 21.Kd2 Qb4+! 22.c3 Qb2+ 23.Qc2 Bxc3+

Better than 23...Re2+, which also wins.

24.Kd3 Re3+, White resigns

White will lose his queen. One line goes 25.Kxe3 Qxc2 26.Ne5 (or anything else) f6 27.Nd3 Re8+ 28.Kf3 Qe2+ 29.Kg3 Re3+ 30.Kh4 Qh5 mate. 0-1

**Shulman** (cont'd from p. 4)

Rd8 24.b4 Rxd1+ 25.Nxd1 Nce6 26.a4 c5 27.h5 cxb4 28.hxg6 fxg6 29.Bxb5 Kh7 30.Nd2 bxc3 31.Qxc3 Nd4 32.Kb2 Nfe2 33.Qa3 Qc7 34.Nc3



34...Bf8

0-1

35.Qxf8 Qxc3+ leads to mate.

## U.S. Junior Open

The U.S. Junior Open was held July 27-29 in Tulsa, Okla. Several Texas players performed notably, and one tied for the national Under 15 title.

With 28 players competing in the Under 21 section, Alex Chua (1958) of Plano and Bryan Pernes (1751) of Fort Worth tied for third place with 4.5 out of 6. Both scored big upsets, with Pernes defeating Enrique Rios (2125) in Round 5 and Chua defeating Andrey Dokuchaev (2256) in Round 6.

Also in that section, Laura Lindsey (1546) of Austin placed sixth with 4. UT-Dallas student Andrey Dokuchayev (2256) and Albert Yeh (1859) of Richardson tied for seventh place with 3.5.

In the Under 15 section, Daniel Nelson (1656) of Dallas tied with Rory Chambers for first place, and is U.S. Under 15 co-champion. Peter Yeh (1760) of Richardson placed third with 5 out of 6. David Gorrell (1575) of Mansfield tied for fifth with 4.

In the Under 11 section, Kevin Wang of The Woodlands led the tiebreaks in a four-way tie for second with 5 out of 6. That tie also included Taylor Martin of Fort Worth, placing fifth on tiebreaks. Todd Appelbaum of Plano placed sixth with 4.5. There was a ten-way (!) tie for seventh with 4 points

*English Opening A36*

**Enrique Rios 2120**

**Bryan Pernes 1751**

*U.S. Junior Open U21 2001 (5)*

1.e4 c5 2.c4 Nc6 3.Nc3 g6 4.g3 Bg7 5.Bg2 e6 6.Nge2 Nge7 7.d3 d6 8.Be3 0-0 9.d4 Qb6 10.d5 Ne5 11.b3 exd5 12.exd5 Bf5 13.0-0 Rae8 14.h3 Bc8 15.f4 Nd7 16.Qd2



16...Qb4 17.Rfb1?? (17.g4) Nf5 18.Bf2 Rxe2 19.Qxe2 Qxc3 0-1

*Scotch Gambit C56*

**Alex Chua 1958**

**Andrey Dokuchaev 2256**

*U.S. Junior Open U21 2001 (6)*

1.e4 Nc6 2.d4 e5 3.Nf3 exd4 4.Bc4 Nf6 5.0-0 Nxe4 6.Re1 d5 7.Bxd5 Qxd5 8.Nc3 Qd8 9.Rxe4+ Be6?! 0-1



ECO gives 9...Be7 10.Nxd4 f5! 11.Rf4 0-0 12.Nxc6 Qxd1+ 13.Nxd1 bxc6 14.Rc4 =. 10.Nxd4 Nxd4 11.Rxd4 Qc8 12.Bg5 f6

Or 12...Bd6 13.Ne4 ± Tringov-Rossetto, Amsterdam 1964.

13.Bf4 Bc5??

13...Be7 14.Qh5+ Bf7 15.Qe2 ± 14.Qh5+ 1-0

# Anderson repeats as San Antonio champion

by **NM Selby Anderson**

Did you ever hear the one about the chess organizer who scheduled a tournament on his first wedding anniversary? Oh yeah, that was me.

Somehow I overcame the psychological weight of that circumstance, and played some good chess. Not enough to pull a repeat sweep, but with a little help from boards 2 and 3 in the last round, enough to repeat untied. (Jim Gallagher won three consecutive San Antonio titles without a tie, 1991-93.)

I got to play a couple of "advertisements" for the Center Counter, win-ning short games with Black in rounds 3 and 5. In round 4 Angela Alston held me to a draw after I lost the thread of a superior Catalan position.

In the last round, decisive games on the next two boards could have meant a three-way tie. However, Ali Morshedi's delayed Benko Gambit held against John Patty on Board 2, while on Board 3 Jim Rohrbaugh's early Qc2 in the Queen's Gambit Declined was a no-starter against Angela Alston's active defense with 6...c5.

Morshedi, Patty, Rohrbaugh and Alston ended in a seven-way tie for second place at 4-1, along with three who won their games - Gregg Stanley, Josh Newsham, and a high school player from Brownsville, Vicente Flores (1479).

## PRIZE WINNERS

1st: Selby Anderson, 4.5. 2nd + U2200: Angela Alston, Ali Morshedi, Josh Newsham, James Rohrbaugh, John Patty, 4. 1st U2000: Vicente Flores, 4. 1st U1800: Manuel Gonzalez, 3.5. 1st U1600 + U1400: Victor A. Flores, Aldrin Arandela, Althorp Arandela, Audy Arandela, 3.

The turnout was the best for this event in memory - 64 players. A total of \$800 in prizes was paid out, \$200 over the advertised amount. Greg Wren directed the event, held July 28-29 at the Texas Neuroscience Institute.

Brad Sawyer pulled off a 500-point upset when Sarkisian fumbled a pawn. The 14-year-old from Spring played the technical phase with a master's touch.

## Caro-Kann B12

**Brad Sawyer 1684**

**Drew Sarkisian 2192**

*San Antonio City Chp. 2001 (2)*

1.e4 c6 2.d4 Na6 3.g3 g6 4.Bg2 Bg7 5.c3 Nh6 6.h3 Nc7 7.Ne2 f6 8.0-0 d5 9.exd5 cxd5 10.Re1 0-0 11.Bf4 e5 12.dxe5 fxe5 13.Be3 Nf5 14.Bc5 Rf7 15.f4



15...d4 16.fxe5 Ne3??

"I was going to play 16...Bxe5 but suddenly grabbed my knight, only then noticed that c2 is defended at the end." - D.S.

17.Qxd4 Qxd4 18.Nxd4 Nxe2 19. Kxe2 b6 20.Bd6 Bb7+ 21.Kg1 Nd5 22.Nd2 Bh6 23.Nf1 Rc8 24. Rad1 a6 25.e6 Rf6 26.e7 Re8 27. Ne6! b5

27...Nxe7? 28.Nc7 +-.

28.g4 Rf3 29.g5 Bg7 30.Ng3 Rxe7 31.Bxe7 Rxe3+ 32.Kf2 Rxe3 33. Nxe7 Kxe7



34.Bf6+! Kf7

Of course, 34...Nxf6 35.Re7+ ends it immediately.

35.Be5 Rh5 36.Rh1 Rxe5 37. Rxe5+ Ke6 38.Bg3 Rf5+ 39.Kg1 Bc6 40.Re1+ Kf6 41.Bh4+ g5 42. Rh6+ Kf7 43.Rxc6 1-0

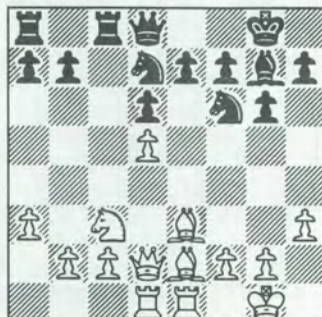
## Pirc Defense B08

**Sonny Kamberi 2347**

**Doug Huddleston 2064**

*San Antonio City Chp. 2001 (3)*

1.Nf3 g6 2.e4 Bg7 3.d4 d6 4.Nc3 Nf6 5.Be2 0-0 6.0-0 Bg4 7.Be3 Nc6 8.d5 Nb8 9.Re1 c6 10.Qd2 Nbd7 11.h3 Bxf3 12.Bxf3 Qa5 13. Rad1 Rfc8 14.a3 Qd8 15.Be2 cxd5 16.exd5





16...Rxc3 17.Qxc3 Nxd5 18.Qb3  
Nxe3 19.Qxe3 Ne5 20.c3 Qc7 21.  
f4 Nc6 22.Bf3 e6 23.Bxc6 bxc6  
24.b4? d5 25.Kh1



Now comes a surprise: Black, nominally behind in material, begins to use queen domination.

25...Qb6! 26.Qd3 Qb5 27.Re3 a5  
28.Rf3 Qa4 29.c4 dxc4 30.Qd7  
axb4 31.axb4 c3 32.Rc1 Bf6 33.  
Qc7 Rd8 34.Rff1 c2 35.Qa5 Qb3  
36.Kh2 Rd1 37.Qb6 Bb2 38.Rcxd1  
cxd1(Q) 39.Rxd1 Qxd1 40.Qxc6  
0-1

#### Center Counter B01

Josh Newsham 2059  
Selby Anderson 2315

*San Antonio City Chp. 2001 (3)*

1.e4 d5 2.exd5 Nf6 3.d4 Bg4!? 4.  
Be2 Bxe2 5.Nxe2 Qxd5 6.0-0 Nc6  
7.c3

Another approach is 7.Nbc3 Qf5  
8.Be3 0-0-0 9.Ng3 Qd7 10.Nce2 h5  
11.f3.  
7...0-0-0 8.Qb3

Equal is 8.Nf4 Qd6 9.Qa4 e5  
10.dxe5 Qxe5 11.Nd2 Bc5 12.Nf3  
Qf5. The text seeks a draw through  
exchanges, but the loss of time is  
soon telling.

8...e5 9.Qxd5 Nxd5 10.dxe5 Nxe5  
11. Nd2 Bc5 12.c4?

White hopes to play Nb3 with  
added effect (such as trapping the  
bishop), and c2-c4 is no longer pos-  
sible after 12.Nb3 Bb6. Best is 12.

Nb3 Bb6 13.Bg5 f6 16.Bh4 Nc4 17.  
Rab1, despite the passive stance.



12...Ne3! 13.Nb3

The alternatives, 13.Re1?? Nc2  
and 13.fxe3 Bxe3+ 14.Kh1 Bxd2,  
are also unattractive.

13...Nxf1 14.Nxc5 Rd1!

A hit-and-run with 14...Nd2 is  
quite good enough.

15.Nc3 Re1 16.f4 Nd2+

I looked hard at 16...Ng4 17.Nd3  
Rhe8, with mate after 18.Nxe3??  
Rxe3, but found nothing clear after  
18.g3! =+. The text keeps the Ex-  
change and wins a pawn besides.

17.Kf2 Rf1+ 18.Ke2 Nexc4

Black's game holds together  
with super glue: 19.b3 Re8+ 20.Kd3  
Rd8+ 21.Ke2 Nb6 +.

19.Nb3 Re8+ 20.Kd3 Nxb3 21.  
axb3 Nb6 22.g4 Rh1 23.g5 Reel  
24.Kc2 Rxb2+ 25.Kb1



25...Nd5!

A deflection to set up a skewer.  
26.Nxd5 Rxc1+ 27.Kxc1 Rh1+ 0-1

#### Stonewall Defense D02

Jesse Buentello 1971  
Jim Rohrbach 2200

*San Antonio City Chp. 2001 (3)*

1.Nf3 d5 2.d4 e6 3.e3 Bd6 4.Bd3  
Nd7 5.0-0 f5 6.c4 c6 7.cxd5 cxd5  
8.Nc3 Ngf6 9.Ng5 Bxh2+ 10.Kh1  
Ng4 11.Nh3 Qh4 12.f3 Bd6 13.Ne2  
0-0 14. Nef4 g5 15.Qe1 Qh6 16.Be2  
Ndf6 17. Nd3 Nh2 18.e4



18...Nxf1 19.Bxg5 Ng3+ 20.Qxg3  
Bxg3 21.Bxh6 dxe4 22.Nc5 exf3  
23.gxf3 b6 24.Rg1 bxc5 25.Rxg3+  
Kf7 26.Rg7+ Ke8 27.dxc5 Rf7 28.  
Rg1 Bb7 29. Ng5 Re7 30.Bb5+  
Kd8 31.Bf8 h6 32.Bxe7+ Kxe7 33.  
c6 Bc8 34.Bc4 hxg5 35.Rxg5 Kd6  
36.Rg6 Nd5 37.a3 Kxc6 38.b4 Bd7  
39.Bxd5+ Kxd5 0-1

#### Queen's Indian E16

Angela Alston 2079  
Brad Sawyer 1684

*San Antonio City Chp. 2001 (3)*

1.d4 Nf6 2.c4 e6 3.Nf3 b6 4.g3 Bb7  
5.Bg2 Bb4+ 6.Bd2 Bxd2+ 7.  
Nbx2 0-0 8.0-0 c5 9.dxc5 bxc5  
10.Qb3 Qc7 11. Rac1 Nc6 12.Qe3  
Ne7 13.Rfd1 Nf5 14.Qd3 Rfd8 15.  
e4 Ne7 16.Qe3 Ng6 17.h3 d6 18.  
Nh2 e5 19.Nb1 Ne7 20.Nc3 Qb6  
21.b3 a6 22.Ng4 Nxg4 23.hxg4  
Qc6 24.Bf3 Rf8 25.Kg2 Qd7 26.

**Qxc5 Rad8 27.Qe3 Nc6 28.Ne2 g6 29.c5 Nd4 30.Nxd4 exd4 31. Qxd4 f5 32.c6 Bxc6 33.Qc4+ Qf7 34. Qxf7+ Rxf7 35.Rxc6 1-0**

*Catalan Opening E09*

**Selby Anderson 2315  
Angela Alston 2079**

*San Antonio City Chp. 2001 (4)*

1.d4 d5 2.c4 e6 3.Nf3 Nf6 4.g3 Be7 5.Bg2 0-0 6.0-0 Nbd7 7.Qc2 c6 8.b3 b6 9.Bb2 Bb7 10.Nbd2 Rc8 11.e4 dxe4

Theory prefers 11...c5.

12.Nxe4 Nxe4 13.Qxe4 Nf6 14. Qc2 h6 15.Rad1 Qc7 16. Ne5 c5 17.d5 exd5 18.cxd5 Bd6 19.Nc4 b5 20.Ne3 Qd8



**21.Qf5 Re8 22.Bh3?**

“Long think, wrong think.” I didn’t see, after 22.Bxf6 Qxf6 23.Qxf6 gxf6 24.Nf5 Bf8 (Angela said she would have given up the h-pawn) 25.d6 Bxg2 26.Kxg2 Rcd8 27.Rd5 Re5 28.Rfd1, just how hopeless Black’s game is.

22...Rc7 23.Bxf6 Qxf6 24.Qxf6 gxf6 25.Nf5 Rd8 26.Nxb6+ Kf8 27. Nf5 Bc8 28.Kg2 Bxf5 29.Bxf5 c4 30.bxc4 bxc4 31.Rfe1 Rb8 32.Rb1 Rxb1 33.Rxb1 Rc5 34.Be4 Ra5 35. Rb2 f5 36.Bf3 f4 37.g4 c3 38.Rc2 Rc5 39.Be4 Be5 40. Kf3 f6 41.h4 Kg7 42.Ke2 Rc4 43.Bf5 Rd4 44. Be6 Rb4 45.d6 Bxd6 46.Bb3 Draw

*Pirc Defense B07*

**Ali Morshedi 2109  
Doug Huddleston 2064**

*San Antonio City Chp. 2001 (4)*

1.e4 g6 2.d4 Bg7 3.Nc3 d6 4.Bc4 Nf6 5.f3 Nc6 6.Nge2 0-0 7.Be3 e5 8.Qd2 exd4 9.Nxd4 Nxd4 10. Bxd4 Be6 11.Be2 Qe7 12.g4 c5 13. Be3 d5 14.Bg5 d4 15.Nd1 h6! 16. Bh4

16.Bxh6? Nxe4! 17.fxe4 Qh4+.  
16...Qc7 17.Nf2 Nd7 18.f4 c4 19. 0-0 Qb6 20.f5



**20...d3 21.Bd1**

On 21.Bf3, Black bails out the bishop with 21...Ne5.

21...Qxb2 22.fxe6 fxe6 23.Rc1 Ne5 24.Qe3 d2 25.Qxd2 c3 26.Qe3 Nc4 27.Qd3 Ne5 Draw

*Schmid Benoni A43*

**Randall Schwarz 2000  
John Patty 2205**

*San Antonio City Chp. 2001 (4)*

1.d4 Nf6 2.c4 c5 3.d5 g6 4.Nc3 Bg7 5.Nf3 0-0 6.g3 d6 7.Bg2 Na6 8.0-0 Rb8 9.Nb5 Nc7 10.a4 a6 11. Nxc7 Qxc7 12.Nd2 b5 13.a5 e6 14. e4 Re8 15.Ra2 exd5 16.exd5 Bg4 17.f3 Bf5 18.b3 Bd3 19.Re1 Rxe1+ 20.Qxe1 Re8 21.Qd1 Qe7 22.Bf1 b4 23.Bxd3 Qe3+ 24.Kg2 Qxd3 25. Qf1 Re2+ 26.Kg1 Qe3+ 0-1

*Modern Defense A42*

**J.P. Hyltin 1959  
Gregg Stanley 2142**

*San Antonio City Chp. 2001 (4)*

1.d4 g6 2.c4 Bg7 3.Nc3 d6 4.e4 e5 5.Nf3 Nc6 6.dxe5 Nxe5 7.Be2 Nxf3+ 8.Bxf3 Be6 9.Nd5 c6 10. Ne3 Nf6 11. 0-0 0-0 12.a4 Qa5 13. Ra3 Qc7 14.Re1 Rfe8 15.Rd3 Bf8 16.b3 Nd7 17.Ng4 Bxg4 18.Bxg4 Nc5 19.Rd4 Bg7 20.Rxd6 Be5 21. Rd2 Bxh2+ 22.Kh1 Bf4 23.Bb2 Nxe4 24.Rxe4 Rxe4 25.Rd7 Qc8 26.f3 Re8 27.Rf7 Qb8? Draw?

Hyltin writes: “Greg was surprised by 26.f3 and it rattled him. He had been blitzing the last three moves, offered the draw with less than 20 seconds on his clock.



“I had about four minutes left to make the last three moves [before time control]. I calculated 28. Rxh7 Kxh7 29. Qd7 is at least a perp (actually it mates in a few moves), then realized that 28...Be5 instead holds nicely.

“I also also looked at 28.Rg7+, but I was a bit rattled [ . . . ] and he offered a draw, which I took.

“Winning is 28.Rg7+ Kf8 29. Rxh7, threatening [both] Rh8 and Qd7: (a) 29...Be5 30.Qc1 threatening Qh6; (b) 29...Qd8 30.Qa1 threatening Ba3 and Qh8.” [On 30...c4, strong is 31.Bd7! +- but not 31.Bf6 Re1+! 32.Qxe1 Qxf6 +=.]

*Center Counter B01*

**Doug Huddleston 2064**

**Selby Anderson 2315**

*San Antonio City Chp. 2001 (5)*

1.e4 d5 2.exd5 Nf6 3.c4 c6

Also good is 3...e6 (the Icelandic Gambit) but it is hard to play for a win after 4.d4! with an Exchange French.

4.dxc6(?)

I cannot recommend playing into the Scandinavian Gambit. Most players transpose to a Panov Caro-Kann with 4.d4; however, Doug Root has used 4.Qa4!? with success.

4...Nxc6 5.Nf3

An important alternative is 5.Nc3 e5 6.d3 Bf5 7.Nf3 Qd7 8.Be2 0-0-0 9.0-0, returning the pawn with active play. Grefe and Silman give 9...Bxd3 10.Bxd3 Qxd3 11.Qa4 Bc5 12.Bg5 Qg6! (their improvement on Lasker's 12...h6) 13. Qb5 e4! 14.Ne5 Qxg5 15.Nxc6 a6! 16. Qa4 bxc6 17.Qxc6+ Kb8 and Black is winning, e.g. 18.Qxa6 Rd6 19.Qa4 e3 20.fxe3 Qxe3+ 21.Kh1 Ng4 22.Nd5 Qe5.

5...e5 6.d3 e4 7.dxe4 Qxd1+ 8. Kxd1 Nxe4 9.Be3 Bf5



With three more moves (0-0-0, Bc5, Rhe8) Black can achieve full mobilization, while White faces a complex task just connecting his rooks.

10.Nfd2

White has various ways to get in trouble, the main book line being 10. Nh4 0-0-0+ 11.Kc1 Be6 12.Nc3 Nxc3 13.bxc3 b6 14.Nf3 Bc5 15. Bxc5 bxc5 =+ Chandler-Adams, Hastings 1989-90. (Black won the ending).

I have won two short games this year after 10.Nbd2 0-0-0: (a) 11.a3 Bc5 12.Bxc5 Nxc5 13.b4 Ne4 14. Ke1 Nc3 15.Be2 Rhe8 + Charles R. Davis-Anderson, Texas Action Chp. 2001; (b) 11.Be2 Bc5 12. Bxc5 Nxc5 13.Kc1 Rhe8 14.Re1 Nb4 15.g4 Ncd3+ 0-1 Todd Appelbaum-Anderson, Dallas CC Action 7/20/01.

10...0-0-0 11.f3

The idea behind 10.Nfd2, but it gives Black a new target for tempo, the loose bishop at e3.

11...Nxd2 12.Nxd2 Bb4 13.g4

13.a3 Rhe8 14.axb4 Rxe3 also leaves White in the grip of a mating attack.

13...Rhe8! 14.Bf4 Bg6 15.h4 Nd4

Also winning is 15...Bxd2 16. Bxd2 Nd4, answering both 17.Rh3 and 17.Bg2 with 17...Nc2.



16.Bh3 b6

Black's game is so good, he could fall into the trap 16...Nxf3?! 17. g5+ Re6, and still be winning.

17.Rf1 Bc2+ 18.Kc1 Bd3

Of course, 18...Ne2+ 19.Kxc2 Nxf4 wins a piece. But why stop at a piece?

19.g5+ Kb7 20.Bg3 Ne2+ 0-1

*King's Indian E74*

**John Patty 2205**

**Ali Morshedi 2109**

*San Antonio City Chp. 2001 (5)*

1.d4 Nf6 2.c4 g6 3.Nc3 Bg7 4.e4 d6 5.Be2 0-0 6.Bg5 c5 7.d5 b5 8. cxb5 a6 9. bxa6 Nxa6 10.Nf3 Rb8 11.Rb1 Qa5 12.0-0 Bg4 13.Nd2 Bxe2 14.Qxe2 Nc7 15.Nc4 Qa6 16. b3 Rfe8



17.Rbd1

White plays to discourage ...e7-e6, but his pieces soon get in a tangle. Simpler seems 17.Qc2.

17...Nd7 18.Bd2

18.Qc2? Bxc3 19. Qxc3 Qxa2 +/- 18...e6 19.Qd3 Nb6 20.dxe6 Rxe6 21.Rf1 Nxc4 22.bxc4

Black's comp is beyond dispute. 22...Qa3 23.Re3 Bd4 24.Rf3 Na6 25.Nb5 Draw

*QGD Orthodox D53*

**Jim Rohrbaugh 2200**

**Angela Alston 2079**

*San Antonio City Chp. 2001 (5)*

1.c4 e6 2.Nc3 d5 3.d4 Nf6 4.Bg5 Be7 5.e3 Nbd7 6.Qc2 c5 7.cxd5 Nxd5 8. Bxe7 Qxe7 9.Nxd5 exd5 10.Rd1 c4 11. Ne2 0-0 12.Nc3 Nf6 13.Be2 Be6 14.0-0 Rfd8 15.Rfe1 Qd7 16.e4 b5 17.Bf3 Rab8 18.exd5 Bxd5 19.Nxd5 Nxd5 20.Bxd5 Qxd5 21.Re5 Qd6 22. Qe2 g6 23.g3 a6 24.Kg2 Rb7 25.f4 Rbd7 Draw

Hyltin: "A fun exercise is to play through my last round with Drew Sarkisian, and try to find moves for me in the Q+P ending. I got just enough junk to make him hallucinate, though I certainly made errors. My 27th, 39th, 42nd, and 45th-46th moves were hard to find."

*Catalan Opening E06*

Drew Sarkisian 2292

J.P. Hyltin 1959

*San Antonio City Chp. 2001 (5)*

1.d4 e6 2.Nf3 d5 3.g3 Nf6 4.Bg2  
Be7 5.0-0 0-0 6.c4 b6 7.cxd5 exd5  
8.Ne5 Bb7 9.Nc3 Bb4 10.Qb3  
Bxc3 11.bxc3 Nbd7 12.Bg5 h6 13.  
Nxd7 Qxd7 14.Bxf6 gxf6 15.Rfe1  
Rfe8 16.Qc2 Qg4 17.c4 Qd4 18.  
Rad1 Qc5 19.Bxd5 Bxd5 20.Rxd5  
Qe7 21.Qd2 Rad8 22.Qxh6 Rxd5  
23.cxd5 Qb4 24.Rd1 Rxe2 25.Qxf6  
Re1+ 26.Rxe1 Qxe1+ 27.Kg2 Qd2  
28.Qd8+ Kg7 29.a3 Qd3 30.Qg5+  
Kf8 31.Qh6+ Kg8 32.Qg5+ Kf8  
33.h4 Qxa3 34.Qd8+ Kg7 35.Qxc7  
Qd3 36.Qe5+ f6 37.Qe7+ Kg6 38.  
d6 Qd5+ 39.Kh2



39...Qd4 40.h5+ Kf5 41.Qe3 Qxd6  
42.Kh3 Qd1 43.Qf4+ Ke6 44.Kh4  
a5 45.h6 Qh1+ 46.Kg4 Qb1 47.Kh5  
Qb5+ 48.Kg6 Qe8+ Draw

*Modern Defense A42*

David Nightingale 1822

Gregg Stanley 2142

*San Antonio City Chp. 2001 (5)*

1.e4 d6 2.d4 g6 3.Nf3 Bg7 4.c4  
Bg5 5.Be2 Nc6 6.Be3 Bxf3 7.Bxf3  
e5 8.d5 Nd4 9.Nc3 Ne7 10.g3 c5  
11.Bg2 a6 12.h4 h5 13.Bh3 b5 14.  
0-0 bxc4 15.Qa4+ Kf8 16.f4 Ng8  
17.f5



17...gxf5 18.Bxf5 Bh6 19.Bxh6+  
Nxb6 20.Be6 Rg8 21.Kh2 Ng4+  
22.Kh3 Rg7 23.Qd1 Ke7 24.Bxg4  
Rg4 25.Qd2 Qd7 26.Kh2 Rag8  
27.Qf2 Ke8 28.Rae1?

At any rate Black has a superior ending after 28.Rg1 f5! 29.exf5 (29. Rae1 f4 30.gxf4 Nf3+! -) Qxf5. 28...Rxc3 29.Qxc3 Rxc3 30.Kxc3 Qg4+ 31.Kf2 Qxh4+ 32.Kg2 Qg4+ 33.Kf2 Qf3+ 34.Kg1 Qg3+ 35.Kh1 h4 36.Nd1 Qh3+ 37.Kg1 Nf3+ 38. Rxf3 Qxf3 39.Nc3 Qg3+ 0-1

*Pirc Defense B07*

Vicente Flores 1479

Jesse Buentello 1971

*San Antonio City Chp. 2001 (5)*

1.e4 d6 2.Nc3 Nf6 3.d4 c6 4.Bg5  
Nbd7 5.Nf3 Qc7 6.Bc4 b5 7.Bd3  
g6 8.0-0 Bg7 9.Ne2 Bb7 10.c3 a6  
11.a4 h6 12.Bxf6 Bxf6 13.axb5  
axb5 14.Qb3 0-0!?

More staid is 14...e5.  
15.e5 dxe5 16.Bxg6



16...e6?!

Black has excellent counterplay with 16...c5! releasing his QB and threatening ...c4. Play might continue 17.Rxa8 Bxa8 18.Bh5 exd4 19. cxd4 Bxf3 20.Bxf3 cxd4 21.Qxb5 Rb8 22.Qh5 Bg7 23.Rc1 Qe5 +=. 17.Bh5 Nb6 18.dxe5 Bxe5 19. Nxe5 Qxe5 20.Ng3 Nc4 21.Qb4 Qg5 22.Be2 Nb6 23.Ne4 Qg7 24. Nc5 Bc8 25.Rxa8 Nxa8 26.Qa5 Qe5 27.Bf3 Qxc5 28.Qxa8 Bd7 29. Qb7 Be8 30.Qc7 Kg7 31.Re1 Kf6 32.Qf4+ Kg7 33.Re5 Qe7 34.Qg4+ Kh8 35.Rh5 Kh7 36.Qh3 Qf6 37. Be4+ Kg7 38.Qg3+ Kh8 39.Qd6 Rg8 40.Rh3 Qg5 41.f4 Qf6 42.Kf2 b4

42...Qg7 43.g4 Qxg4 44.Rxh6+ Kg7 45.Rh7+ Kf6 46.Qd8 mate.



43.g4! +- Rxc4

43...Kg7 44.g5 hxg5 45.Rh7#..  
44.Qf8+ 1-0

# Rudy Tia wins Waco Open

by Mario Leal

Rudy Tia (2116) of Fort Hood took home top honors at the third annual Waco Open, held June 30 at the Salvation Army Community Center. The Waco Chess Club continued its attendance-breaking streak, as 53 players turned out for the four-round game/60 Swiss tournament.

This was Tia's second Waco Open win, as he shared first place last year. This year the tournament was all his, as he finished with a perfect 4.0 in the 23-player Open section. Tia's only scare came during a long battle with Larry Young (1825). Young got a break but was not able to capitalize on it much thanks to the clock.

While Tia was chalking up wins, Larry Kocian (1026), Waco's Scholastic Champion, was stirring the pot as he turned out *two* upsets against Carmen Chairez (1610) and Rory Chambers (1702). In other notable upsets, Mason Harry (1375) drew Louis Hornor (1687), and Patrick Smithson (1499) beat Ken Henkelman (1708).

Second place was shared by 4 players: Samuel Perez (1731), Bryan Pernes (1751), Tim Pernes (1837), and Larry Young (1825). Tom Weiss (1473) and Steve Coyle (1454) shared the C prize.

The 30 player Reserve section was won by Darieck Foster of Harker Heights. His last round game against Craig Thornton (1000) was an exciting one as he played on down in material. Setting a trap, he coaxed Thornton into a combination and suddenly Foster was up in material! Foster pressed home the win and took home the big prize.

Another Waco scholastic star shined as Robert Casiano (865) won

## PRIZE WINNERS

**OPEN:** 1st: Rudy Tia, 4. 2nd: Tim Pernes, Larry Young, Bryan Pernes, Samuel Perez, 3. **Class C:** Tom Weiss, Steve Coyle, 2.5.

**RESERVE:** 1st: Darieck Foster, 4. 2nd: Robert Casiano, 3.5. **Class E:** David Harry, Nathan Narragon, Craig Thornton, 3.

second place with 3.5 points. The Class E prize was shared by David Harry (1140), Nathan Narragon (978), and Craig Thornton (1000).

Mario Leal directed for the Waco Chess Club. Special thanks to these people who made my job so much easier: Donnie Briggs, Robert Casiano, John DeVries, Glenn Gilbert, Ken Henkelman, Ken Keil, Windy Leal, Stuart Madsen, Bill Matney, Patrick Smithson, Gary Lee Webb. Also, thanks to the news media who help make Waco events special: KWTX-Channel 10, KXXV-Channel 25, Waco Citizen, Waco Today, Waco Tribune Herald.

For pictures and final standings, go to our website at [www.marioandwindy.com/wacochess/](http://www.marioandwindy.com/wacochess/)

## French Advance C02

Mason Harry 1375

Louis Hornor 1687

## 3rd Annual Waco Open (1)

1.e4 e6 2.d4 d5 3.e5 c5 4.c3 Nc6 5.Nf3 Qb6 6.Bd3 cxd4 7.cxd4 Nxd4? 8.Nxd4 Bb4+ 9.Kf1 Bd7 10.Nf3 Ne7 11.Be3 Be5 12.Bxc5 Qxc5 13.Nc3 0-0 14.Ng5?! h6 15. Qh5 Ng6 16.Nf3? (16.Nh3) 16... Nf4 17.Qh4 Nxd3 18.Qd4 Qxd4 19.Nxd4 Nxe5 20.Ke2 Nc4 21.b3 Nd6 22.f4 Rac8 23.Kd3 Rc7 24.g4 Rfc8 25.Nce2 Ne4 26.Rhg1 Rc3+ 27.Nxc3 Rxc3+ 28.Ke2 f6 29.Rac1 e5 30. fxe5 fxe5 31.Rxc3 Nxc3+ 32.Kd3 Nxa2 Draw

## Dutch Defense A80

Larry J. Young 1825

Carmen Chairez 1610

## 3rd Annual Waco Open (2)

1.d4 f5 2.Nc3 e6 3.e4 g6 4.h4 Bg7 5.h5 Qe7 6.h6 Bf8 7.Nf3 d5 8.exd5 exd5+ 9.Ne5 Be6 10.Bf4 Nd7 11.Qd2 c6 12.0-0-0 0-0-0



13.Nxc6! Qf7 14.Nxa7 mate 1-0

## French Advance C01

Patrick Smithson 1409

Ken Henkelman 1708

## 3rd Annual Waco Open (3)

1.e4 e6 2.Nf3 d5 3.exd5 exd5 4.d4 Bd6 5.Bd3 Nf6 6.Bg5 0-0 7.0-0 Bg4 8.Nbd2 Nbd7 9.c3 c6 10.Qc2 Qc7 11.Rfe1 Rfe8 12.Kh1 Bh5 13. Bh4 b6 14.c4 Ng4 15.h3 Ngf6 16. cxd5 cxd5 17.Qxc7 Bxc7 18. Rxe8+ Rxe8 19.Bb5 Bxf3 20. Nxf3 Rd8 21.Rc1 Bf4 22.Rc2 h6 23. Bxd7 Rxd7 24.Rc8+ Kh7 25.Bxf6 gxf6 26.g3 Bc7 27.Re8 Kg7 28. Nh4 Kh7 29.Nf5 Bd8 30.Kg2 b5 31.g4 b4 32.Kg3 a5 33. Kh4 Bc7 34.Kh5 Bf4 35.Re7 Rxe7 36.Nxe7 Bc1 37.b3 Bb2 38.Nf5 Bc1 39.Nd6 Kg7 40.Ne8+ Kf8 41.Nxf6 Bb2 42.Nxd5 Bxd4 43.f3 Kg7 44.Ne7 Kf6 45.Ng8+ Ke5 46.Nxh6 f6 47. Nf5 1-0

(Continued on page 16)

# Panhandle Open Too!

by NM Gary Simms

They say if you wait long enough, something good will happen. Well, by golly, it sure did. It's been who knows how many years since we had a weekend tournament in Amarillo, and more since we had the Panhandle Open. But through the efforts of our club president, Eric Johansen (who has regrettably gone forth and secured gainful employment in the Cincinnati area), Jerry Huntington (club program director), and Brad Higby (club treasurer), the grand old event has risen from the ashes.

It event was held June 2-3 at the Radisson Inn in Amarillo. Having been announced in *Chess Life*, it drew participants from Lubbock, Albuquerque, and Oklahoma City. Twenty-six people played in all, giving us a very solid return to the weekend tournament scene in the Panhandle.

The venue was nice, although leaving a little to be desired in the areas of roominess, air-conditioning, and (Saturday night) noise control.

Two masters and one expert competed, but they did not have an easy time with the lower rated players.

## PRIZE WINNERS

*1st:* Gary Simms, 4.5. *2nd:* David Langlois, Carlos Santillan, 4. *Class A:* Frank Arizpe, 3. *Class B:* Herbert Baumann, Mario Valles, 3.5. *Class C:* Don Dye, Brad Higby, 2.5. *Class D:* Ernest Terry, 2.5. *Unrated:* Michael Morgan, 2.

Round 1 went as expected, with all the higher-rated players winning (but not without some tense moments - see the Simms-Hampton game); not even one draw. It makes

the tournament director's job easier with the second round pairings, I suppose.

### KI Attack A05

Gary Simms 2275

Robert Hampton 1612

### Panhandle Open Too! (1)

1.e4 d6 2.Nf3 g6 3.g3 Bg7 4.Bg2 Nf6 5.d3 0-0 6.0-0 c5 7.Nbd2 Nc6 8.c3 Bg4 9.h3 Bd7 10.Re1 Rb8 11.a4 a6 12.d4 cxd4 13.cxd4 Qc8 14.Kh2 Nb4 15.Re3 Qc2 16.Qf1 Bxa4 17.Rc3 Qd1 18.Qc4 Bb5 19.Qxb4 Qe2 20.Nf1 Qxe4 21.Ne3 Qe6 22.Bd2 Bh6 23.Re1 Qd7 24.Ng1 Bc6 25.Rcc1 Bxg2 26.Nxg2???



26...Bg7?? (26....Nd5! 27.Qa5 b6 28.Qxd5 Bxd2 →) 27.Nf3 b5 28.Qb3 d5 29.Ne5 Qf5 30.Bf4 Ne4 31.Nc6 Rb7 32.g4 Qe6 33.f3 Rc8 34.Qc2 Bxd4 35.Nxe7+ Rxe7 36.Qxc8+ Qxc8 37.Rxc8+ 1-0

The second round had Baumann (who played very solidly) drawing with Santillan.

### Ruy Lopez C92

Herbert Baumann 1735

Carlos Santillan 2082

### Panhandle Open Too! (2)

1.e4 e5 2.Nf3 Nc6 3.Bb5 a6 4.Ba4 Nf6 5.0-0 Be7 6.Re1 b5 7.Bb3 d6

8.h3 0-0 9.c3 Bb7 10.d3 Na5 11.Bc2 c5 12.Nbd2 g6 13.Nf1 Re8 14.Ng3 Bf8 15.Be3 Bg7 16.Qd2 Qc7 17.Bh6 Bh8 18.Qg5 Qd8 19.Nh2 Bc8 20.Rad1 Be6 21.b3 Nd7 22.Qd2 Nc6 23.Nf3 a5 24.Ng5



24...b4 25.Nxe6 Rxe6 26.Be3 Nb6 27.c4 a4 28.f3 Bf6 29.Ne2 axb3 30.axb3 Re7 31.Ra1 Rea7 32.Rxa7 Rxa7 33.Rb1 Nd7 34.Kh2 Nf8 35.Qc1 Ne6 36.g3 Ra2 37.Ra1 Qa8 38.Rxa2 Qxa2 39.h4 Na5 40.Qd1 Kg7 41.Kg2 h5 42.Kh3 Be7 43.Kg2 Nc6 44.Kh3 Bf6 45.Kg2 Qa8 46.Qd2 Qa1 47.Bh6+ Kh7 48.Be3 Qa5 49.Bf2 Qd8 50.Bd1 Qe7 Draw

### Pirc Defense B07

James Berry 1981

James Farren 1745

### Panhandle Open Too! (2)

1.e4 d6 2.d4 Nf6 3.Nc3 g6 4.Nge2 Bg7 5.Ng3 0-0 6.Be2 Nc6 7.h4 e5 8.d5 Nd4 9.h5 Nxe2 10.Qxe2 Bg4 11.f3 Bxh5 12.Bg5 h6 13.Bxf6 Qxf6 14.Nxh5 gxh5 15.Rxh5 Qf4 16.Qf2 Qf6 17.0-0-0 Qg6 18.Rf5 f6 19.Rh1 a6 20.Rh4 Kf7 21.Ne2 Ke7 22.Ng3 Rh8 23.Rg4 Qf7 24.Nh5 Rag8 25.Qh4 c6 26.Rxg7 Rxg7 27.Rxf6 Qg8 28.Re6+ Kf8 29.Qd8+ Kf7 30.Rf6 mate 1-0

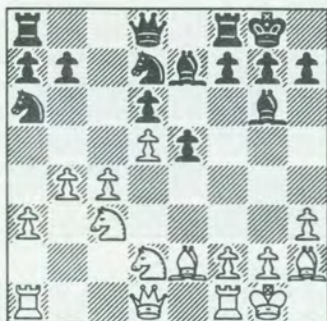
*Nimzovich Defense B00*

Darrel Hunter 1750

Gary Simms 2275

*Panhandle Open Tool! (2)*

1.e4 Nc6 2.Nf3 d6 3.c4 Nf6 4.Nc3 Bg4 5.h3 Bh5 6.d4 e6 7.Be2 Be7 8.Bf4 Bg6 9.e5 Nd7 10.exd6 cxd6 11.d5 Nb4 12.0-0 e5 13.Bh2 0-0 14. a3 Na6 15.b4 Bf6 16.Nd2 Be7



17. Nce4?! (17.f4) f5 18.Ng3 Nc7 19. f4 e4 20.Qb3 Kh8 21.Kh1 Bf6 22.Rad1 a5 23.Bg1 axb4 24.axb4 Qb8 25.Bh5 b5 26.Bxg6 hxg6 27. Ne2 bxc4 28.Nxc4 Nb5 29.Nd4 Nxd4 30.Bxd4 Bxd4 31.Rxd4 Nc5 32.Qe3 Nd3 33.Na5 Qa7 34.Nc6 Qf7 35.Qg3 Rfe8 36.b5 Ra2 37.Qe3 g5 38.Rxd3 exd3 39.Qxd3 Ree2 40.fxg5 Rxg2 41.Rxf5 Qe8 42.Ne5 dxe5 43.Qe4 Rge2 44.Qh4+ Kg8 45.g6 Ra1+ 0-1

In Round 3 Edrenkin downed Langlois after a long, hard struggle. Santillan suffered a draw again, this time against Arizpe.

*KI Attack A05*

Gary Simms 2275

James Berry 1981

*Panhandle Open Tool! (3)*

1.Nf3 Nf6 2.g3 g6 3.Bg2 Bg7 4.d3 c5 5.0-0 0-0 6.e4 Nc6 7.Nbd2 d6 8.Re1 Qc7 9.c3 b6 10.d4?! cxd4

11.Nxd4 (11.cxd4?! Nb4 12.Re3 Qc2!) 11...Bb7 12.Nf1 Rad8 13. Bd2 Qb8 14.Qe2 Qa8 15.Rad1 Rfe8 16.g4 Qc8 17.f3 Ba6 18.Qe3 Ne5 19.Bc1



19...d5? 20.g5 Nh5 21. exd5 Rxd5 22.f4 Nc4 23.Qf2 Rd6 24.b3 e5!? 25.Nf3?! (25.bxc4 exd4) 25...Rxd1 26.Rxd1 Na5 27.fxe5 Bb7 28.Re1 Qf5 29.Nd4? (29.Bd2!) 29...Qxf2+ 30.Kxf2 Bxg2 31.Kxg2 Rxe5 32. Rxe5 Bxe5 33.Be3 f5 34.h4 Kf7 35.Kf3 Nb7 36.Nd2 Nd6 37.Nc6 Bxc3 38.Nxa7 f4



39.Nb1! fxe3? (39...Be1!) 40.Nxc3 Nf5 41.Nc8 b5 42.Nxb5 Nf4 43. Ncd6+ Nxd6 44.Nxd6+ Ke6 45. Nc4? (45.Nb5!) 45...e2 46.Kf2 e1(Q)+ 47.Kxe1 Ng2+ 48.Kf2 Nxb4 49.Ne3! 1-0

*Sicilian Closed B25*

Carlos Santillan 2082

Frank Arizpe 1812

*Panhandle Open Tool! (3)*

1.e4 c5 2.Nc3 Nc6 3.g3 g6 4.Bg2 Bg7 5.f4 e5 6.d3 d6 7.Nf3 f5 8.0-0 Nge7 9.Be3 0-0 10.Qd2 Nd4 11. Nd1 Rb8 12.c3 Nxf3+ 13.Bxf3 Be6 14.fxe5 Bxe5 15.Bh6 Rf7 16.Ne3 d5



17.exd5 Nxd5 18.Rae1 Bg7 19. Nc4 Nc7 20.Bxg7 Kxg7 21.Qe3 Bxc4 22.dxc4 b6 23.Re2 Qd6 24. Rd2 Qf6 25.Rfd1 Re8 26.Qf4 Ne6 27.Qd6 Rd8 28.Qc6 Rxd2 29.Rxd2 Qg5 30.Qd6 Qe3+ 31.Kg2



31...Ng5 (31...Nd4! - Fritz) 32.Qf4 Qxf4 33.gxf4 Nxf3 34.Kxf3 Re7 35. Rd6 Kf7 36.a4 Re6 Draw

On Sunday morning Simms and Edrenkin (the only two perfect scores at this point) agreed to a quick draw in round four, both needing to recuperate from three hard games on Saturday. Two minor upsets: Valles beat Reyna and Baumann outfought Arizpe. This brought Baumann to 3.5 out of 4, and earned him the dubious honor of facing Simms in the last round.

*Sicilian B20*

Alex Edrenkin 2200

Gary Simms 2275

*Panhandle Open Too! (4)*

1.g3 g6 2.Bg2 Bg7 3.f4 c5 4.Nf3 Nc6 5.0-0 Nf6 6.d3 0-0 7.e4 d6 8.c3 Bg4 9.h3 Bd7 10.Kh2 Qc7 Draw

Round 5 pairings pitted Simms as White versus Baumann, and Santillan with White against Edrenkin. Langlois had White against Berry, both strong players who had been lurking in the wings for the first four rounds.

When the smoke cleared, Simms outlasted Baumann (who put up a mighty struggle!), Langlois man-

aged to lose his queen to Berry (but got plenty of compensation for her) and won anyway, and Santillan (in the last game to finish) put forth a titanic effort and took Edrenkin to the mat for the count.

*Ruy Lopez C62*

Carlos Santillan 2082

Alex Endrekin 2200

*Panhandle Open Too! (5)*

1.e4 e5 2.Nf3 Nc6 3.Bb5 d6 4.0-0 Bd7 5.c3 Be7 6.d4 Bf6 7.dxe5 Nxe5 8.Bxd7+ Qxd7 9.Nxe5 Bxe5 10.f4 Bf6 11.Qf3 0-0-0 12.Be3 Kb8 13.a4 Qc6 14.Nd2 Ne7



15.Rfc1 Rhe8 16.b4 g6 17.b5 Qd7 18.Rab1 d5 19.e5 Bg7 20.Nb3 Nf5 21.Nc5 Qe7 22.Bf2 f6 23.g4 Nh6 24.e6 f5 25.h3 fxg4 26.hxg4 Rf8 27.Rd1 Qd6 28.Nd7+ Rxd7 29.exd7 Qxd7 30.Rxd5 Qxg4+ 31.Qxg4 Nxg4



32.Bd4 Bh6 33.Rf1 b6 34.Rd7 Bxf4 35.Rxh7 g5 36.Rh8 Bh2+ 37.Kh1 Rxh8 38.Bxh8 Bf4 39.Bd4 c6 40.bxc6 Kc7 41.Re1 Kxc6 42.Re7 a5 43.Re6+ Kd5

White won after a titanic struggle, many moves later. 1-0

**Waco Open** (cont'd from p. 13)

*Sicilian Sozin B88*

Carmen Chairez 1610

Larry Kocian 1026

*3rd Annual Waco Open (3)*

1.e4 c5 2.Nf3 d6 3.d4 cxd4 4.Nxd4 Nf6 5.Nc3 e6 6.Bc4 Nc6 7.Bb3 Be7 8.Be3 Bd7 9.Qe2 0-0 10.f3 h6 11.g4 d5 12.0-0-0 dxe4 13.f4 Qc7 14.g5 Ne8 15.Nxe4 e5 16.Nf3 exf4 17.Bf2 Bg4 18.Bd4 Nxd4 19.Rxd4 Kh8 20.Qg2 f5 21.Rc4 Bxf3 22.Qxf3 Qe5 23.Nd2 Bxg5 24.h4 Bf6 25.Rc3 Nd6 26.Qf2 Ne4 27.Nxe4 Qxe4 28.Re1 Bxc3 29.Rxe4 fx4 30.bxc3 Rae8 31.Bd5 e3 32.Qe2 f3 33.Bxf3 Rxf3 34.Qxf3 e2 35.Qf7 e1(Q)+ and ... 0-1

*Modern Defense A41*

Larry Young 1825

Rudy Tia 2116

*3rd Annual Waco Open (4)*

1.d4 d6 2.c4 e5 3.dxe5 dxe5 4.Qxd8+ Kxd8 5.Nf3 f6 6.Nc3 c6 7.Be3 Be6 8.Nd2 Nd7 9.g3 Nb6 10.b3 Ba3 11.Rd1 Kc7 12.Bg2 h5 13.0-0 h4 14.c5 Nd7 15.Nde4 b6 16.Rd3 h3 17.Bh1 Rb8 18.Rfd1 Nxc5 19.Nxc5 bxc5 20.Rd6 Bd5 21.Bxd5 Kxd6 22.Bxg8+ Ke7 23.Bc4 Rh8 24.Rxd8 Rxd8 25.f4 Bb4 26.Ne4 Rd1+ 27.Kf2 Be1+ 28.Kf3 f5 29.Bxc5+ Kd7 30.Nf2 e4+ 31.Ke3 Bxf2+ 32.Kxf2 Rh1 33.Bxa7 Rxh2+ 34.Kg1 Rg2+ 35.Kh1 Kd6 36.Bd4 g6 37.a4 c5 38.Bf6 Rf2 39.

a5 Kc6 40.Bd8 Kb7 41.a6+ Ka7 42.Bf6 e3 43.Bd8 g5 44.fxg5 f4



After a few more moves, Young resigned with one second on his clock. 0-1



## Dallas vs. The Rest of Texas!

# Texas Middle School Challenge

by Sharon Pernes

On the weekend of June 23rd and 24th, eight middle school players met at the Dallas Chess Club for the first DFW vs. the State Middle School Challenge.

Over the past several months, players from all over the state were contacted to participate in this event. This was the brainchild of Bryan Pernes, who wanted a way to play chess against some friends from around the state. Unfortunately, several players could not make it due to vacations and summer plans, but two very good teams were made.

The State team was comprised of Paul Haney (captain), Cullen Hesbrook, Blaine Webb, and Anthony Guerra.

The Dallas/Fort Worth team was Alex Chua (captain), Bryan Pernes, Peter Yeh, and Daniel Nelson.

The time controls were 25/90, SD/1. With bragging rights and a small cash prize at stake, the tournament began at 9 a.m. Saturday. Sharon Pernes and Luis Salinas were the TDs. The Dallas Chess Club was gracious enough to allow us to use the club for this tournament.

Round 1 found each player matched up against the same ranked player on the other team. The DFW team emerged victorious with a 3.5 vs. 0.5 start. All four boards played opened with the Sicilian, and quickly turned into four very different games.

In the second round the DFW team swept the State team, although several of the games were close. At this point the DFW team was feeling pretty good about things, realizing that they only needed one more point

to win the tournament. Little did they know what was to come the next day. After the second round game several of the players were able to join the weekly Saturday Swiss held at the Dallas Chess Club.

On Sunday the action began at 9 a.m. By now the boys were all feeling more relaxed and getting to know each other better. The State team was primed, pumped and ready to face the DFW team, whose team average was over 250 points more than theirs. First done were Alex Chua and Blaine Webb, who drew their game. The DFW team only needed another draw to win at this point. Next done were Peter Yeh and Anthony Guerra, who also drew. Captain Paul Haney came out to congratulate the players on the other team, and then went back to finish his game. Things did not get any better for the DFW team that round, and they lost that round to the State team 1.5 to 2.5. After a quick break for lunch the tournament finished with 3 draws and only 1 win for the DFW team.

In the end the DFW team emerged victorious with 11.5 points versus 4.5 for the State team. Given the difference in average team rating, this was a great showing for the State team. Talks are already underway for a rematch.

These players were all gentlemen, getting along very well and making new friends over the weekend. They are the future of scholastic chess in the state, and I for one am very proud of all of them. I cannot wait to see where they all go with their awesome chess ability.

### Texas Middle School Challenge - Standings (Team sort)

#	Name	Rtng	Post	Team	Rd 1	Rd 2	Tot
1	Nelson, Daniel A.	1725	1735	DFW	W8	W5	2.0
2	Chua, Alexander	1958	1962	DFW	W7	W6	2.0
3	Yeh, Peter	1819	1828	DFW	W6	W7	2.0
4	Pernes, Bryan	1753	1748	DFW	D5	W8	1.5
5	Webb, T. Blaine	1504	1507	STATE	D4	L1	0.5
6	Haney, Paul A.	1586	1576	STATE	L3	L2	0.0
7	Hesbrook, Cullen	1549	1541	STATE	L2	L3	0.0

# Tournament Crosstables

## Panhandle Open Too!

Amarillo, June 2-3

name	rating	1	2	3	4	5	total
1 Gary Simms	2275	+11	+17	+8	=4	+5	4.5
2 David Langlois	1827	+18	+6	-4	+11	+8	4.0
3 Carlos Santillan	2082	+15	=5	=7	+17	+4	4.0
4 Alex Edrenkin	2200	+12	+9	+2	=1	-3	3.5
5 Herbert Baumann	1735	+20	=3	+13	+7	-1	3.5
6 Mario Valles	1661	+21	-2	+19	+9	=7	3.5
7 Fred Arizpe	1812	+16	+10	=3	=5	=6	3.0
8 James E. Berry	1981	+19	+14	-1	+10	-2	3.0
9 Randy Reyna	1786	+24	-4	+15	=6	+14	3.0
10 Eric Johansen	1691	+23	-7	+18	-8	+17	3.0
11 Robert Hampton	1612	-1	+26	+23	-2	=12	2.5
12 Simon Teichmann	1600	-4	+24	-17	+18	=11	2.5
13 Donald Dye	1508	H	+22	-5	-14	+21	2.5
14 James Farren	1745	+25	-8	H	+13	-9	2.5
15 Brad Higby	1490	-3	+20	-9	+23	H	2.5
16 Ernest Terry	1389	-7	-23	+25	+20	=19	2.5
17 Darrel Hunter	1750	+26	-1	+12	-3	-10	2.0
18 Kirk Walvoord	1392	-2	+21	-10	-12	+23	2.0
19 Andy Brown	1400	-8	+25	=6	=21	=16	2.0
20 Michael Morgan	unr.	-5	-15	+24	-16	+25	2.0
21 Brady Crandall	unr.	-6	-18	+26	=19	-13	1.5
22 Jerry Huntington	1634	H	-13	U	+24	U	1.5
23 Darcey Kobs	845	-10	+16	-11	-15	-18	1.0
24 Wesley J. Dudley	1339	-9	-12	-20	-22	+26	1.0
25 Patrick Burke	886	-14	-19	-16	+26	-20	1.0
26 Josh Dudley	1080	-17	-11	-21	-25	-24	0.0

## 3rd Annual Waco Open

Waco, June 30

Open

name	rating	1	2	3	4	total
1 Rudy Tia	2116	+15	+5	+4	+3	4.0
2 Tim Pernes	1837	+13	+10	-3	+7	3.0
3 Larry J. Young	1825	+8	+12	-2	-1	3.0
4 Bryan Pernes	1751	+9	+14	-1	+13	3.0
5 Samuel Perez	1731	+23	-1	+20	+11	3.0
6 Gary Lee Webb	1859	+16	-7	=15	+14	2.5
7 Michael Jennings	1723	+22	+6	=11	-2	2.5
8 Tom Weiss	1473	-3	=22	+18	+16	2.5
9 Steve Coyle	1454	-4	=16	+22	+15	2.5
10 Kenneth Henkelman	1708	+20	-2	-13	+21	2.0
11 Louis Homor	1687	=18	+17	=7	-5	2.0
12 Carmen Chairez	1610	+21	-3	-14	+20	2.0
13 Patrick Smithson	1499	-2	+21	+10	-4	2.0
14 Larry Kocian	1026	+19	-4	+12	-6	2.0
15 Donald Briggs	1609	-1	+23	=6	-9	1.5
16 Bill Matney	1572	-6	=9	+17	-8	1.5
17 Jonathan Mayes	1384	H	-11	-16	+22	1.5
18 Mason Roy Harry	1375	=11	+19	-8	+23	1.5
19 Rory Chambers	1702	-14	+18	U	U	1.0
20 Cleophes Lambert	1154	-10	B	-5	-12	1.0
21 Glenn Gilbert	unr.	-12	+13	+23	-10	1.0
22 John DeVries	1297	-7	=8	-9	-17	0.5
23 John Downing	1421	-5	-15	-21	-18	0.0

Reserve

name	rating	1	2	3	4	total
1 Darieck Foster	1174	+21	+16	+12	+6	4.0
2 Robert Casiano	865	+3	+19	+14	=4	3.5
3 Stephanie Ballom	1269	-2	+26	+23	+11	3.0

4 Clayton Swafford	1241	+24	=11	+17	=2	3.0
5 David Harry	1140	B	-12	+25	+15	3.0
6 Craig Thornton	1000	+22	+8	+9	-1	3.0
7 Nathan Narragon	978	+28	-9	+21	+17	3.0
8 Michael Nangle	unr.	+15	=6	+16	+14	3.0
9 Frank Lawrence	1201	+25	+7	=6	=12	2.5
10 Stuart Madsen	1134	+27	-17	=20	+19	2.5
11 Chelsea Santos	994	+30	=4	+13	-3	2.5
12 Clinton Hendricks	868	+29	+5	-1	=9	2.5
13 Calvin Furlong	1195	-17	+27	-11	+20	2.0
14 Matthew Lubrano	1043	+26	+23	-2	-8	2.0
15 Sky Sparks	906	-8	+22	+18	-5	2.0
16 Donald Helms	896	+18	-1	-8	+27	2.0
17 Rebecca Narragon	795	+13	+10	-4	-7	1.5
18 Derek Moore	unr.	-16	+24	-15	+25	2.0
19 Sarah Mayes	965	H	-2	+24	-10	1.5
20 Jonathan Mikkelson	973	-23	+30	=10	-13	1.5
21 Brenda Tantzen	794	-1	+29	-7	=23	1.5
22 Jamie Murphy	569	-6	-15	=29	+26	1.5
23 Shiloh Acton	unr.	+20	-14	-3	=21	1.5
24 Reign Sparks	813	-4	-18	-19	+29	1.0
25 Ted Penner	800	-9	+28	-5	-18	1.0
26 Rodney Hendricks	624	-14	-3	+28	-22	1.0
27 Lauren Morgan	624	-10	-13	+30	-16	1.0
28 Benjamin Mikkelson	unr.	-7	-25	-26	+30	1.0
29 Alex Moore	unr.	-12	-21	=22	-24	0.5
30 Alissa Hendricks	403	-11	-20	-27	-28	0.0

## Dallas CC Grand Prix 3

Dallas, July 13-15

Open

name	rating	1	2	3	4	5	total
1 Andrew Whatley	2357	+9	=3	+2	+7	+6	4.5
2 Drew Sarkisian	2192	+4	+6	-1	+3	+7	4.0
3 Joshua Newsham	2059	+13	=1	+8	-2	+12	3.5
4 Albert Yeh	1859	-2	+9	+10	H	=8	3.0
5 Jason Doss	2340	B	+10	+13	U	U	3.0
6 Alex Echeverry	1846	+14	-2	+11	=8	-1	2.5
7 Rory Chambers	1702	+8	+12	H	-1	-2	2.5
8 Alexander Chua	1902	-7	+13	-3	=6	=4	2.0
9 Jose Trevino	1884	-1	-4	+12	-11	B	2.0
10 Douglas Schwetke	1516	B	-5	-4	-12	+13	2.0
11 Peter Yeh	1760	H	=14	-6	+9	U	2.0
12 Jahangir Ahmed	1900	H	-7	-9	+10	-3	1.5
13 Tim Pernes	1837	-3	-8	=5	B	-10	1.0
14 David W. Phillips	1948	-6	=11	U	U	U	0.5

Amateur

name	rating	1	2	3	4	5	total
1 Ming Chin	1764	+12	+4	+9	-2	+6	4.0
2 Martin Alexander	1712	-9	+11	+4	+1	=7	3.5
3 Louis Hornor	1687	=14	=6	+10	+7	H	3.5
4 T. Blaine Webb	1504	+5	-1	-2	+12	+11	3.0
5 Robert H. Sanders	1634	-4	+12	=8	=6	+10	3.0
6 Trevor Jackson	1284	+11	=3	=7	=5	-1	2.5
7 Jonathan Allen	1662	H	+14	=6	-3	=2	2.5
8 Stephanie Ballom	1269	-15	+13	=5	-11	B	2.5
9 David Gorrell	1573	+2	+10	-1	U	H	2.5
10 Nate Findley	1448	+13	-9	-3	+14	-5	2.0
11 Robert Smeltzer	1600	-6	-2	+13	+8	-4	2.0
12 Charles E. Woods	1578	-1	-5	B	-4	=13	1.5
13 Brian Young	1624	-10	-8	-11	B	=12	1.5
14 Doyle Lobaugh	1506	-3	-7	H	-10	U	1.0
15 Douglas Schwetke	1516	+8	U	U	U	U	1.0

B=bye H=1/2 pt. bye U=unplayed X=forfeit win F=forfeit loss  
Z=zero pt. bye\*=house player r/e=re-entered

### Novice

name	rating	1	2	3	4	5	total
1 David Hickman	1316	+24	+16	+4	=2	+5	4.5
2 Danyul Lawrence	1171	+27	+3	+20	=1	=6	4.0
3 Alan Chen	1295	+26	-2	+9	+16	+13	4.0
4 Paul Richard Chua	1282	+25	+10	-1	=7	+14	3.5
5 Emily Breeding	1190	+14	+8	+13	H	-1	3.5
6 Connor Haley	934	=19	+15	+21	=13	=2	3.5
7 G. Chakravarthi	1165	-17	+11	+18	=4	+16	3.5
8 George Culler	1316	+9	-5	=10	+17	=12	3.0
9 Gary Wang	1104	=8	+27	-3	+23	+19	3.0
10 Susan Breeding	1156	+23	-4	=8	H	+17	3.0
11 Zachary Carter	972	-16	-7	+22	+24	+20	3.0
12 Tyler Pemes	1168	+22	-13	H	+21	=8	3.0
13 Timothy Henderson	1301	+18	+12	-5	=6	-3	2.5
14 Alex Ting	953	-5	=26	+25	+20	-4	2.5
15 David Jamison	1058	H	-6	-17	+25	+24	2.5
16 Clayton Swafford	1241	+11	-1	+24	-3	-7	2.0
17 Tecora Ballom	750	+7	-20	+15	-8	-10	2.0
18 Jacob Van Der Wiel	1074	-13	+22	-7	-19	+21	2.0
19 Cliff Stevens	1184	=6	-21	H	+18	-9	2.0
20 Courtney Jamison	1069	H	+17	-2	-14	-11	1.5
21 Theodore Jamison	723	H	+19	-6	-12	-18	1.5
22 Frank Chen	769	-12	-18	-11	X	=23	1.5
23 Alex Hargis	unr.	-10	-24	+27	-9	=22	1.5
24 Kenny Alan Lee	1143	-1	+23	-16	-11	-15	1.0
25 James Huang	1006	-4	H	-14	-15	=26	1.0
26 Meagan Pemes	1026	-3	=14	U	U	=25	1.0
27 David Yen	932	-2	-9	-23	F	U	0.0

## Texas Junior Invitational

Dallas, July 20-22

name	rating	1	2	3	4	5	total
1 Alexander Chua	1902	+7	+2	+3	=5	=4	4.0
2 Bryan Pemes	1751	+11	-1	+10	+6	=3	3.5
3 Alex Echeverry	1824	+12	+15	-1	+9	=2	3.5
4 Curtis Brooks	1588	H	+16	=9	+7	=1	3.5
5 Bo Githoro	1838	H	=6	+11	=1	=8	3.0
6 Christopher Hobart	1636	H	=5	+15	-2	+9	3.0
7 Martin Alexander	1712	-1	=13	+14	-4	+10	2.5
8 Peter Yeh	1760	+10	=9	U	H	=5	2.5
9 Daniel Nelson	1656	+16	=8	=4	-3	=6	2.0
10 Gilbert Davila	1506	-8	+12	-2	+15	-7	2.0
11 Jeff Wilder	1497	-2	B	-5	+14	U	2.0
12 Brian Young	1624	-3	-10	B	X	U	2.0
13 David Gorrell	1573	-17	=7	-16	B	U	1.5
14 Taylor Martin	1279	-15	H	-7	-11	B	1.5
15 Michael Jennings	1723	+14	-3	-6	-10	U	1.0
16 Xiao Yu	1827	-9	-4	+13	F	U	1.0
17 Kristopher Littlejohn	1787	+13	U	U	U	U	1.0

## San Antonio City Championship

San Antonio, July 28-29

name	rating	1	2	3	4	5	total
1 Selby Anderson	2315	+34	+18	+4	=2	+9	4.5
2 Angela Alston	2079	+32	+19	+28	=1	=6	4.0
3 Ali Morshedi	2109	+47	+30	+25	=9	=7	4.0
4 Joshua Newsham	2059	+40	+24	-1	+28	+16	4.0
5 Vicente Flores	1479	+38	+16	-8	+17	+15	4.0
6 James Rohrbaugh	2200	+23	+35	+15	H	=2	4.0
7 John Patty	2205	+41	+21	H	+10	=3	4.0
8 Gregg Stanley	2142	H	+55	+5	=13	+18	4.0
9 Doug Huddleston	2064	+39	+44	+11	=3	-1	3.5
10 Randall Schwarz	2000	+20	=31	+14	-7	+32	3.5
11 Sonny Kamberi	2347	+43	+17	-9	=26	+35	3.5
12 Drew Sarkisian	2192	+29	-28	+22	+19	=13	3.5
13 John Paul Hyltin	1959	+53	=33	+31	=8	=12	3.5

14 Manuel L. Gonzalez	1663	=52	+37	-10	+36	+30	3.5
15 Jesse Buentello	1971	+46	+22	-6	+24	-5	3.0
16 Patrick Bloom	1884	+50	-5	+41	+29	-4	3.0
17 Aurelio Gonzalez	1825	+58	-11	+23	-5	+43	3.0
18 David Nightingale	1822	+51	-1	+50	+38	-8	3.0
19 Chris Campbell	1613	+49	-2	+46	-12	+40	3.0
20 Audy Arandela	1276	-10	X	=30	+33	=25	3.0
21 Gary Carlson	1758	+62	-7	-29	+47	+41	3.0
22 Aldrin Arandela	1529	+64	-15	-12	+55	+38	3.0
23 Althorp Arandela	1397	-6	+59	-17	+48	+45	3.0
24 Victor A. Flores	1533	+57	-4	+55	-15	+42	3.0
25 Andres Hortillosa	1904	+60	+36	-3	H	=20	3.0
26 Steven D. Young	1885	H	+27	+33	=11	U	3.0
27 Richard C. Lopez	1647	H	-26	+48	=43	+39	3.0
28 Bradley Sawyer	1684	+42	+12	-2	-4	=29	2.5
29 Anthony Guerra	1376	-12	+42	+21	-16	=28	2.5
30 Louis Hornor	1687	+48	-3	=20	+40	-14	2.5
31 Erick Vallarino	1533	+61	=10	-13	-32	+54	2.5
32 Micael Haskins	1325	-2	=49	+51	+31	-10	2.5
33 Juan Carrizales	1529	B	=13	-26	-20	+53	2.5
34 Gerardo Elizalde	1439	-1	=51	+52	-37	+49	2.5
35 Raymond H. Smith	1721	+59	-6	+39	H	-11	2.5
36 Steve Coyle	1502	+56	-25	H	-14	+51	2.5
37 Richard King	1600	H	-14	+54	+34	U	2.5
38 Joe Flores	unr.	-5	+53	+44	-18	-22	2.0
39 Adlai Arandela	1285	-9	X	-35	+44	-27	2.0
40 Sean Graham	1280	-4	+57	+45	-30	-19	2.0
41 Joe Alexander	1408	-7	+58	-16	+56	-21	2.0
42 Aaron Reyes	1024	-28	-29	+60	+50	-24	2.0
43 Freddy R. Jones	1448	-11	+60	H	=27	-17	2.0
44 Domingo Gonzalez	1542	+63	-9	-38	-39	+55	2.0
45 Charles E. Barbour	1689	-55	+52	-40	+46	-23	2.0
46 George G. Evans	1250	-15	+56	-19	+45	+57	2.0
47 Steven Catilleja	1335	-3	-48	+49	-21	+56	2.0
48 Angel G. Reyes	1070	-30	+47	-27	-23	=50	1.5
49 Jonathan Rea	998	-19	=32	-47	X	-34	1.5
50 James Fleener	1381	-16	+62	-18	-42	=48	1.5
51 Ricardo Flores, Jr.	1178	-18	=34	-32	+59	-36	1.5
52 Gabriel Guerra	1015	=14	-45	-34	-53	+59	1.5
53 Wallace Short	1235	-13	-38	=59	+52	-33	1.5
54 Dee Carter	1400	H	U	-37	+57	-31	1.5
55 Seth King	1097	+45	-8	-24	-22	-44	1.0
56 Simon P. Limon	unr.	-36	-46	X	-41	-47	1.0
57 Catalina Anderson	731	-24	-40	+58	-54	-46	1.0
58 Eugene Lopez	1185	-17	-41	-57	B	U	1.0
59 James A. Nielsen	1116	-35	-23	=53	-51	-52	0.5
60 Edward Tarte	1228	-25	-43	-42	U	H	0.5
61 Kenneth Pelton	671	-31	F	U	U	U	0.0
62 Garrett Shrader	1135	-21	-50	F	U	U	0.0
63 Kevin Pelton	793	-44	F	U	U	U	0.0
64 Pete Barcenez	unr.	-22	U	U	F	U	0.0

Solution: 1.Nxe3 (1...Kxe3 2.Rb4#; 1...Kf4 2.Re7#; 1...Kd4 2.Re6#; 1...Ke5 2.Rc4#). Subscriptions to *Strategems* are \$20 a year (4 issues). Address: 2613 Northshore Ln., Westlake Village, CA 91361-3318.

USCF Executive Board: President: John McCrary; Vice President: Steve Shutt; Secretary: Bob Smith; Vice President for Finance: Frank Camaratta; Members at Large: Doris Barry, Frank Brady, Helen Warren.

**MOVING? Don't leave TK en passant!**

Please send your new address to George John, POB 710750, Houston, TX 77271; george@neosoft.com

## TCA Spring Membership Meeting

by TCA Secretary Enrique Rios

The 2001 Spring Scholastic meeting of the Texas Chess Association was called to order March 10 at 8:31 p.m. by President Gary Gaiffe. George John moved to waive the reading of the minutes from the previous meeting. Sharon Pernes seconded. The reading of the minutes was dispensed with by acclamation.

### Treasurer's Report

George John delivered a financial report, however he noted that the financial report was drawn without any money received from Regional Scholastics. Mr. John expressed a desire for more memberships, particularly family memberships. Sharon Pernes noted that many parents don't know what *Texas Knights* is, so perhaps an initiative could include passing out sample copies to youngsters at big scholastic events like the state scholastic. In reviewing the Treasurer's report, Bob James asked what the Patron Family membership was. George John stated that it was an erroneous title, but we should create it. Selby mentioned that the Family Patron membership was simply five dollars over the family membership. Enrique Rios moved to accept the Treasurer's report as presented. Forrest Marler seconded and the Treasurer's report was accepted by acclamation.

### President's Report

Gary Gaiffe noted that he has been out of the loop and very inactive due to family problems and being out of town to resolve those problems. He noted that Forrest took over a lot of the President's work and then Forrest had neck surgery, so Enrique Rios took over as acting president. He commended Enrique and George for doing all the work of the TCA during his absence. Additionally he thanked Enrique for taking over the website and maintaining it dutifully.

In assessing the current state of Scholastic growth, Gaiffe noted that scholastics were growing too quickly and were outstripping volunteer resources. In Gaiffe's opinion, there were not enough organizers for further growth and that critical mass would not be reached. There has been a steep increase in numbers, but he feels these numbers will plateau. Gaiffe feels the curve can reach as many as 1,600-1,700 players in the state scholastic, but since organizers are exhausted, only 1,300 can be reached. Thus, in conclusion, we need more teachers and organizers to continue to fuel the scholastic boom.

One solution would be teacher certification, so as to assure that potential teachers would have basic credentials and the legitimacy to charge certain rates. In line with these suggestions, Enrique Rios mentioned the two chess courses being offered at UTD in the 2001-2002 academic year. Successful completion of these Chess in Education courses would result in obtaining certification for Chess in Education.

Speaking on behalf of Region 2, Sharon Pernes noted that her region was in consensus that simply more TDs and organizers were needed. George John suggested that perhaps TCA work with the USCF to develop a plan, since it is currently being debated in the scholastic committee.

Gaiffe concluded that the state of the TCA was the same. Nothing had changed, except we had lost our SASP funding.

### New Business

Bob James proposed the creation of a Texas Girls' Scholastic Championship. He stated that girls enjoy these tournaments. He ran the South Texas Girls' Championship last year and he got 34-35 entries from Austin, Houston, and Brownsville. Sharon Pernes asked whether the tournament would be moved around, to which Bob James responded that the base is good in Corpus Christi.

Bob James was encouraged to continue organizing the event with the follow caveat:

Only Texas residents or students enrolled in secondary or primary schools (including home schools) in Texas may play in this event.

The caveat passed 15-0.

Luis Salinas submitted the following two motions in absentia:

"Organizers/organizations who submit bids for TCA non scholastic events will be given extra consideration for their bids on the Texas Scholastic Championships and Texas Grade.

"Organizers/organizations who submit bids or run a non scholastic regional will be given extra consideration for their regional bids."

(Note that raising the entry fee \$1 and hiring another club/organization to run the non scholastic regional is acceptable but not preferred over running the both the scholastic and non-scholastic regionals.)

Sharon Pernes spoke on behalf of Luis and stated that some organizers are organizing only money making scholastic tournaments, while other events are neglected. These two motions would ensure that the maximum number of events would be held every year.

Gary Gaiffe moved that both motions be added to the current bidding guidelines. The motion passed 15-0.

Sharon Pernes introduced the following resolution: "Resolution. That the TCA Scholastic Committee codify the bidding guidelines and consideration given in awarding all TCA scholastic events and print them on the website, *Texas Knights*, and as a handout for organizers. These guidelines must be reviewed and signed by the bidding party upon submission of a bid."

The resolution was seconded by George John, and it passed 15-0.

In discussing scholastics, the question came up as to who could participate in which section in Texas scholastic events. Gary Gaiffe appointed Sharon Pernes as an advisor to the scholastic committee, and asked that she compile a set of hard rules and regulations for the TCA to use as guidelines for future events.

James Liptrap introduced the following motion: "That a list of all relevant TCA rules and regulations associated with a particular tournament be given to all bidding parties upon request. This document shall also be posted on the TCA website." George John seconded. The motion passed 15-0.

James Liptrap introduced the following motion: "That a list of all relevant TCA rules and regulations associated with a particular tournament be given to all bidding parties upon request. This document shall also be posted on the TCA website."

George John seconded. The motion passed 15-0. The creation of a Family Patron Membership for \$30 passed a straw poll 15-0 and was then tabled to the Secretary to draw up language and implementation. Thus, the following membership category was created: "H. Family Patron Member: A household consisting of husband and/or wife, including children (if any) age 18 or under, being Texas residents, may take out a Family Patron Membership of the Association upon payment of \$30.00 or more dues per year. Said membership shall receive *Texas Knights* by first class mail, have the family name displayed in the *Texas Knights* 'Hall of Honor' and be known as a generous supporter of Texas chess. They shall receive one subscription to *Texas Knights*, and all shall be considered TCA members eligible to participate in TCA events."

Bob James announced that for the 2002 Scholastic Championship, he'd secured a convention center, four scholarships and hotels with a shuttle to the convention center. He also commented that the high school section is dropping dramatically, so as an incentive to promote retention, he'd initiated a college section to be held in conjunction with the scholastic.

Alexey Root made an announcement about the Chess in Education courses to be offered at UTD for teachers. She also included in her announcement the plan for UTD to hold the President's Cup over the Easter weekend. The President's Cup will be a four team college invitational between UTD, UMBC, Stanford, and. Finally, she also announced plans to hold the First International Koltanowski Memorial Conference on Chess in Education in December in conjunction with the National K-12 Championship in Dallas.

Upon a motion by Enrique Rios, the meeting was adjourned at 9:56 p.m.

## City of Dallas – Fall Scramble 2001

**4-round Swiss, G15, G30, G15, G30**  
Saturday, Oct. 6, 2001  
Campbell Green Recreation Center  
10 a.m. – 3 p.m.

**4 Sections:** Open (all ages), Reserve (age 18 & under), Age 13-17, Age 12 & under.

**Each section:** Trophies 1st, 2nd, 3rd.

**Entry Fee:** Pre-registration Youth (under 18): \$5. Adults: \$10 if entry postmarked by 10/6/01; on-site registration fee is \$10. Youth and \$15 Adult. Payment options: cash, check, or money order only; payable to Campbell Green Recreation Center.

**All:** One 1/2 point bye allowed if requested before Rd. 2.

**Bring sets, boards, clocks if possible.**  
Some provided but not guaranteed.

**Schedule:** Late registration 9-9:45 a.m. Sat. Oct. 6. Rounds: 10, 10:45, 12:45, 1:30. Trophy presentation, pictures: 2:45-3 p.m.

### Contact/Entries:

Barbara Sneary  
16600 Park Hill Dr.  
Dallas, TX 75248  
(214) 670-6314

*Texas' most active chess club cordially invites  
you to another one of our prestigious tournaments:*

# 2001 Houston Absolute Championship

## October 27-28

- SECTIONS: Championship / Under 1800  
ROUNDS: Saturday: 9\*, 12, 6; Sunday: 10, 4  
TIME CONTROLS: Rd 1: Game/60; Rounds 2-5: 30/90, Game/60  
REGISTRATION: Friday: 7 p.m.- 10 p.m. OR  
Saturday: 8 a.m.- 9 a.m. (If playing round 1)  
Saturday: 8 a.m.- 11 a.m. (If 1/2 pt bye for round 1)  
ENTRY FEE: \$30.00 (\$40 non-HCC members)  
*Renew/extend your HCC annual membership and receive a 10% complimentary discount.*  
BYES: Up to two optional half point byes  
PRIZES: Cash and Trophies for both sections (75% returned)

\* Round 1 Saturday at 9 a.m. (Game/60)

Pre-register by mail and show up for round 1  
Bring your set, clock, and a friend!

<< *Free Coffee, Donuts, and other refreshments served both days!* >>  
<< *Free pizza for out-of-town players as well!* >>

\*\*\*\*\*

### Tournament Site:

**HOUSTON CHESS CLUB**  
9000 Southwest Freeway, Suite 290  
Houston, TX 77074  
(713) 773-CHESS  
[www.HoustonChessClub.com](http://www.HoustonChessClub.com)

# 5th annual TEXAS K-12 GRADE CHAMPIONSHIPS & COLLEGIATE CHAMPIONSHIP

**November 2-4**

**Houston**

Marriott West Loop, 1750 West Loop South

1-800-613-3982. Mention chess for special \$69 rate, reserve by 10/22.

Open to Texas residents and schools

14 separate tournaments, one per grade (K-12) and College

**Trophies to top 10 individual and top 5 teams (3-player)**

Limit two teams per school in each grade

Winner of 12th grade section wins a **full 4-year scholarship** to The University of Texas at Dallas – up to \$16,000 value.

**Entry fee:** \$21 if postmarked by 10/20, \$35 site. Do not mail after 10/25. Send to Southwest Chess Enterprises, 4060 Old Town Rd., Addison, TX 75001-3518.

**Entry must include name, USCF ID number (or new/pending), grade and school.**

Incomplete entries will be charged at-site entry fee.

Email: bradb4@home.com Fax: 972-239-8554.

**Registration at site:** Friday 7-9 p.m., Saturday 8-9:30 am.

Saturday registration may require a 1/2 point 1st round bye.

**Saturday rounds (G/45): 10 - 12:30 - 2:30 - 4:30**

**Sunday rounds (G/60): 10 - 1**

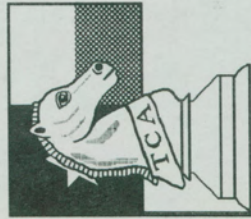
One 1/2 point bye available, any round, if requested before Round 2.

**5-SS Rated Quick (G/10) tourney** Friday 8 p.m. EF: \$5. Trophy prizes.

**Bughouse tourney** Saturday 8:30 p.m. EF \$10/team. Trophy prizes.

**Parent/Child team tourney** Sat. 6:30 p.m. EF \$10/team. Trophy prizes.

For more information go to TCA website: **[www.texaschess.org](http://www.texaschess.org)**

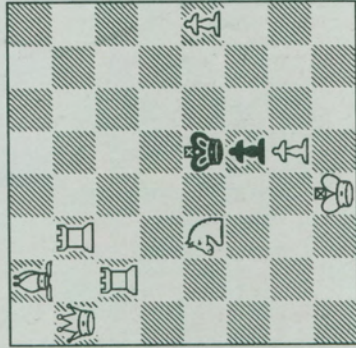


**Texas Chess Association**  
**P.O. Box 501**  
**Helotes, TX 78023-0501**

Non-Profit Org.  
U.S. Postage  
**PAID**  
San Antonio, TX  
Permit No. 445

See inside front cover for  
TCA membership information.

**Joshua Green, AZ**  
*StrateGems, Jan./Mar., 1999*



**Mate in two**  
Solution: page 19

