

TEXAS KNIGHTS

The Official Publication of the Texas Chess Association

\$ 2

Volume 44, Number 6

P.O. Box 501 Helotes, Texas 78023

Julu-August 2003



Annakov and Diesen equal first in state championship

2003 Texas State Championship – notes by NM Drew Sarkisian	p. 3
Jim Gallagher: an appreciation – Selby Anderson.....	p. 16
Texas Action Championship – Selby Anderson.....	p. 20
Crosstables	p. 24
Statement by candidate George C. John.....	p. 25
Chess in Shakespeare – Bill Wall	p. 26

— Your TCA ballot is enclosed —

TEXAS CHESS ASSOCIATION

www.texaschess.org

President: Gary Gaiffe, POB 161052, Austin, TX 78716-1052; (512) 328-3638; ggaiffe@att.net. **Vice-President:** Enrique Rios, 2200 Waterview Pkwy. #30207, Richardson, TX 75080-2275; (972) 235-4561; BigDaddyUTD@aol.com **Secretary:** Bob James, 5806 Flynn Pkwy., Corpus Christi, TX 78413-3506; (361) 225-1455; bob@jamesgang.ws. **Treasurer:** Mario Leal, POB 5768, Waco, TX 76708-5768, (254) 753-5145; mleal@hot.rr.com. **Editor:** Selby Anderson, POB 501, Helotes, TX 78023-0501; (210) 695-6149; schachlied@yahoo.com. **Webmaster:** George C. John, george@neosoft.com. **Tournament Clearinghouse:** Forrest Marler, 2109 Ave. T, Huntsville, TX 77340-4930; (936) 291-7625; fmarler@cox-internet.com. **Texas Chess Association, Inc.** is a 501(c)(3) educational nonprofit corporation dedicated to promoting chess in Texas. **Regular Membership:** \$10/yr. **Junior** (18 or under) and **Student** (with ID) **Memberships:** \$7.50. **Foreign Membership:** \$12.50 (Canada & Mexico), other foreign \$17.50. **Patron Membership:** \$25 (first class mailing of *Texas Knights* plus listing in Hall of Honor.) **Family Membership:** \$15. **Membership without *Texas Knights*:** \$5. **Club Membership:** \$25 (\$10 schools, \$40 foreign), includes one 1/4 page ad per year. Send to TCA Treasurer, POB 5768, Waco, TX 76708-5768. Give name, address, city, state and zip code; also phone and e-mail (optional).

TCA Hall of Honor

Angela Alston 0803
Selby Anderson 9999
The Arandela family 1203
Lynne Babcock 0703
Brian Backlund 0603
Alan Joel Bast 0603
Howard Berger 0304
Joe Bradford 0604
Clarence Callaway 9999
John T. Campbell 1003
Mike Carpenter 0404
G.W. Church, Jr. 9999
William D. Collin 1103
Thomas Cunningham 0404
Dr. Raymond D. Duque 0604
Kristy Eng 0304
Scott Griggs 0404
Edward G. Guetzow 1003

Jim Hollingsworth 0603
Toshio Imai 0204
Bob James 0404
George C. John 0604
Mikhail Langer 0803
Rosendo Leal 0504
Patrick Long 9999
Mark E. McCue 1103
George A. Mota 1103
Joshua Newsham 0204
Robert B. Potter 9999
Tim Redman 0704
Frank M. Roberts 0803
Doug & Alexey Root 1103
Luis Salinas 0605
Drew Sarkisian 0504
Kelvin Shih 0803
Gary M. Simms 1203

Michael Simpson 0803
John Sneed 0304
Duane Solley 1203
Clifford Stevens, Jr. 0504
Don Sutherland 0504
Gene Tatom 1003
Rodney J. Thomas 0504
Louis Thurston 9999
Watauga Chess Club 1203
Bruce A. Wells 0603
Lee Williams 0504
David Williamson 0504
Thomas L. Yantis 0504
Alfred Zerm 0803
Ziane Chess Academy 1103
(Note: Contributions beyond membership fees are tax deductible.)

Contributors this issue: Sid Pickard, Luis Salinas, Drew Sarkisian, Greg Wren.

Send submissions (paper or disk) with your phone number to P.O. Box 5768, Waco, TX 76708-5768; or e-mail to mleal@hot.rr.com. Deadline next issue: Aug. 15. Please mail a printout for ChessBase formatted submissions.

All contents of *Texas Knights* © 2003 by the Texas Chess Association, Inc.. No part may be reproduced in any way without the express consent of the editor. Advertising rates: \$50/page, \$35/half, \$20/quarter, \$1/line (two column format).

Error last issue: In May-June we erroneously listed Stephen Rugh on the cover and page 4 as the Texas middle school co-champion with 7 points. Actually, he finished in a tie for second place with a score of 6.5.

Annakov, Diesen share state championship title

Over two hundred players competed in three sections at the Texas State and Amateur Championship, held Memorial Day weekend in Dallas. The 34-player championship section was won by GM Babakouly Annakov of Fort Worth and IM Mark Diesen of Houston, who tied with 5.5 out of 7. It was the second Texas championship title for both.

In the amateur (U2200) championship, three players tied for first to top a field of 135 players: Mark Dixon, Joseph Drake, and Jason Howell, each with 6-1 scores.

Jimmy Heiserman won the 52-player scholastic division with 5-2. Jason Doss directed for Southwest Chess Enterprises.

Notes by NM Drew Sarkisian

Round 1

D30

Babakouly Annakov 2527

James Rohrbaugh 2237

Texas Chp. 2003 (1)

1.d4 d5 2.c4 e6 3.Nf3 c5 4.cxd5 exd5 5.Bg5 Be7

White's early bishop sortie invites a bit of a mess after 5...Qb6 6.Nc3! cxd4 7.Nxd4 Be6 8.e3 Qxb2 9.Bb5+ Nd7 10.0-0 Qxc3 11.Qa4 Ngf6 12.Bxf6 gxf6 13.Nxe6 fxe6 14.Bxd7+ Kf7, as in Rojo Gomez-Baury 1996.

6.Bxe7 Nxe7 7.dxc5 Qa5+ 8.Nc3 0-0 9.e3 Qxc5 10.Rc1 Nd7 [10...Nbc6] 11.Be2 Nf6 12.0-0 Qa5 13.Nd4 Bd7 14.Bf3 Rad8 15.Qb3 Bc6 16.Rfd1 Rd7 17.a4! Rc8 18.Qa3 Qd8 19.a5 b6 20.a6 g6?! 21.Be2 Rd6 22.h3 h5 23.b3 Be8 24.Bf3 Rc5 25.Qb2 Nh7 26.b4 Rc8 27.Ncb5 Rxc1 28.Rxc1 Bxb5 29.Nxb5 Rd7 30.Qe5 Nf8 [30...Nf5] 31.Nd4 Rd6 32.g4 hxg4 33.Bxg4 b5 34.Kh2 f6 35.Qg3 Rxa6 36.Rc7



36...Ra2??

Jim didn't see White's next. For better or worse, he needed to play something like 36...Qe8 with advantage to White.

37.Nc6 Rxf2+

Not 37...Nxc6 38.Be6+ with a mating attack.

38.Kg1 Nf5 39.Bxf5 Rxf5 40.Nxd8 1-0

PRIZE WINNERS

CHAMPIONSHIP: 1st + 2nd: Babakouly Annakov, Mark Diesen, 5.5. 3rd: John Cole, Selby Anderson, 5. 1st+2nd Expert: Ali Morschedi, Drew Sarkisian, Albert Yeh, 4.

AMATEUR: 1st + 2nd: Mark Dixon, Joseph Drake, Jason Howell, 6. 1st + 2nd Class B: Ming Chin, Vicente Flores, 5.5. 1st Class C: Michael Cathey, 4.5. 2nd Class C: Jacob Slepoy, Doyle Lobaugh, Adrian Diaz, 4 1st + 2nd D/under: Joshua Spare, T.E. Kolenda, 4. Unrated: Fred Scott, Senthil Balasubramaniam

SCHOLASTIC: 1st: Jimmy Heiserman, 5. 2nd-9th: Thomas Thongmee, Daniel Liu, Nathan Woodworth, Ashwin Venkataraman, Harrison Atkins, Tyler Unland, Abhishek Mallala, Christian Lay, 4.

Caro-Kann B15

Wellington Rocha 2469

Drew Sarkisian 2151

Texas Chp. 2003 (1)

1.e4 c6 2.d4 d5 3.Nc3 dxe4 4.Nxe4 h6

A funny little system I like to trot out from time to time.

5.Bc4

After 5.Nf3 Bf5 6.Ng3 Bh7 White doesn't have the cookbook space-gaining idea of h4-h5 as in the normal Classical Caro-Kann (4...Bf5). On the other hand, 4...h6 doesn't do much for Black's development. Another idea for White is to play an immediate 5.Ng3.

5...Bf5 6.Ng3 Bh7 7.Nf3 e6 8.Qe2 Nd7 9.0-0 Ngf6 10.Re1 Bg8!?

During the game, I wasn't certain about allowing a cheesy sac on e6 with 10...Be7 11.Bxe6 fxe6 12.Qxe6 with visions of Nh4-f5 to follow. Objectively speaking, I don't think the sacrifice is sound. In any case, I got "lazy" and decided to play a la Bronstein and eliminate the possibility by overprotecting e6.

11.Bd2 Qc7 12.b4 Nd5 13.b5 Bh7 14.bxc6 bxc6 15.Ne5 Nxe5

Of course not 15...Bxc2?? 16.Nxf7 and Black is toast.

16.dxe5



16...Nb4!

The bishop on f8 now suddenly appears "developed," protecting the steed on b4.

17.Rac1?

Not the insipid 17.Bxb4 Bxb4 18.Red1 Bc3 19.Rab1 Bxe5-/+; 17.Bb3 Nxc2 18.Bxc2 Bxc2 19.Bxh6 Bg6 20.Bf4 with some advantage for White. Rocha finds a creative way to fight for the initiative.

17...Nxc2 18.Ne4 Nxe1 19.Bb5 Rc8 20.Rxc6 Qxc6 21.Bxc6+ Rxc6 22.Qxe1

Or 22.Bxe1 Be7 23.Nd6+ Bxd6 24.exd6 0-0 25.h3 is probably even; 22.Qb5!? Bxe4 23.Qb8+ Kd7 24.Qb7+ Rc7 25.Qxe4 Nc2 26.Qd3+ Kc8 and White has nothing better than going for a perpetual check after 27.Qa6+.

22...Be7 23.h4 0-0

A poor choice would be 23...Bxh4? 24.Nd6+ Kd7 25.Qe3 and White's calling the shots.

24.f3?

As Wellington pointed out after the game, this is the real lemon. The weakening of the second rank should have cost White the game. 24.Nd6! and it's still a fight.

24...Rc2

White is helpless against Black's plan of doubling rooks on the second rank. An added bonus is that the White a-pawn will fall, giving Black a potentially lethal passer. Wellington finds the only chance to complicate matters.

25.Nf6+! gxf6 26.Bxh6 Rb8 27.Qg3+ Bg6 28.h5 Rbb2 29.hxg6 Rxa2

The prosaic 29...Rxc2+ 30.Qxc2 Rxc2+ 31.Kxc2 fxc6 32.Be3 a6 33.exf6 Bxf6 should be good enough to win. I miscounted the pawns in time pressure. Black's next is, objectively speaking, not bad, except when one considers the time situation. Black had less than ten minutes left before time control.

30.gxf7+ Kxf7 31.Qg7+ Ke8 32.Qg6+ Kd7 33.Qd3+ Kc7 34.Bf4?

White was down to less than a minute at this point. Better is 34.Kh1 Rxc2 35.Qc4+ Kd8 36.exf6 Bxf6 37.Qxe6 Rh2+ 38.Kg1 Bd4+ 39.Be3 Bxe3+ 40.Qxe3 and Black's exposed king makes it difficult to make progress.

34...f5?

Returning the favor. Instead, 34...Rxc2+ 35.Kh1 Bc5! (the move I missed) 36.exf6+ Kc8 leaves White nothing better than 37.Qf1 (37.Be3 Rh2+ 38.Kg1 Rhc2 and the threat of Ra1+ wins) 37...Rg1+ 38.Qxc1 Bxc1 39.Kxc1+.

35.Kh1 Rxc2

The only way to play on is 35...Bc5!? 36.Be3 Bxe3 37.Qxe3 Rc4=+.

36.Qc4+ Kd7 37.Qb5+ Kc7 38.Qc4+ Kd7 39.Qb5+ Kc7 40.Qc4+ Draw

King's Indian E70

Jeffrey Ashton 2215

Marcin Kaminski 2474

Texas Chp. 2003 (1)

1.d4 Nf6 2.c4 g6 3.Nc3 Bg7 4.e4 0-0 5.Nf3 c6 6.Be2 d5 7.e5 Ne4 8.0-0 Nxc3 9.bxc3 dxc4 10.Bxc4 c5 11.h3 Nc6 12.Re1 cxd4 13.cxd4 Na5 14.Be2 Be6 15.Bf4 Rc8 16.Qa4 a6 17.Re1 Qd5 18.Rxc8 Rxc8 19.Ng5 Bd7 20.Qd1 Nc6 21.Be3 h6 22.Bf3 Qa5 23.Ne4 b6 24.Qb3 (24. Rb1!? ±) 24...Be6 25. Qb2 Qb4 26.Rb1 Qxb2 27.Rxb2 Rd8



28.Rxb6

28.Nf6+! exf6 29.Bxc6 fxe5 30.d5 Bxd5 31.Rd2 Bxc6 32.Rxd8+ Kh7 33.Bxb6 gives White the advantage.

28...Nxd4 29.Bxd4 Rxd4 30.Rxa6 Bd5 31.Nf6+ exf6 32.Rd6 Draw

QP Zukertort D02

Keith Hayward 2281

Alex Chua 2106

Texas Chp. 2003 (1)

1.d4 d5 2.Nf3 e6 3.e3 c5 4.b3 cxd4 5.exd4 Nc6

Dus Chotimirsky-Marshall, 1907 continued 5...Nf6 6.Bd3 Nc6 7.0-0 Be7 8.Bb2 0-0 9.Nbd2.

6.Bd3 Bd6 7.0-0 Nge7 8.a3 f6 9.Bb2 0-0 10.c4 dxc4 11.bxc4 Qc7 12.Nc3 a6 13.Re1 Bf4? (13...Rd8) 14.Qc2

Normally Keith is more alert. 14.g3! and Black is busted, since 14...Bh6 (14...Bd6 15.c5 traps the Bd6) 15.d5 wins a piece: 15...Nd8 16.d6 Qxd6?? 17.Bxh7+ wins the Black queen.

14...g6 15.g3 Bh6 16.d5 Ne5 17.Nxe5 fxe5 18.d6!? Qxd6 19.Ne4 Qc7?

Black needed to play 19...Qd8, though White is certainly better after 20.Bxe5.



20.Nf6+!+- Kf7

20...Rxf6 21.Bxe5 and White's up the exchange.

21.Bxe5 Qc5 22.Nxh7 Rd8 23.Nf6
Bd7 24.Ng4 Bg7 25.Bxg7 Kxg7
26.Qc3+ Kh7 27.Re5 Qc7 28.Rh5+
Kg8 29.Rh8+ Kf7 30.Nh6 mate 1-0

Round 2

Nimzo-Indian E48

Kevin Fleming 2050
Mark Diesen 2467

Texas Chp. 2003 (2)

1.d4 Nf6 2.c4 e6 3.Nc3 Bb4 4.e3
c5 5.Bd3 Nc6 6.Nge2 d5 7.0-0
cxd4 8.exd4 dxc4 9.Bxc4 0-0 10.
Bg5 Be7 11.Qd2 b6 12.Rad1 Bb7
13.f4 Rc8 14.Bxf6 Bxf6 15.Bb3
Na5 16.f5 Nxb3 17.axb3 Qd7 18.
fxe6 fxe6 19.Qe3 Qc6 20.Qh3 Bg5
21.Kh1 b5



22.d5 exd5 23.Nd4 Rxf1+ 24.Rxf1
Qe8 25.Ncxb5 Rc1 26.Rxc1 Bxc1
27.Qg3 Bxb2 28.Nd6 Qd7 29.N4f5
Bf6 30.h3 Ba6 31.Nh6+ Kf8 32.
Ng4 Ke7 33.Ne3 Ke6 34.Ndf5 d4
35.Nc4 Bxc4 36.bxc4 d3 37.Qg4
Kf7 38.c5 Qe6 39.Nd6+ Ke7 40.
Nc8+ Kf7 41.Nd6+ Ke7 42.Nc8+
Draw

Sicilian Defense B40

John Cole 2262
Jeffrey Ashton 2215

Texas Chp. 2003 (2)

1.e4 c5 2.Nf3 e6 3. c3 d5 4.e5 d4
5.Bd3 Nc6 6.0-0 Nge7 7.Re1 Ng6
8.g3 Qc7 9.Qe2 a6 10.h4 Bd7 11.h5
Nge7 12.Na3



12...Nd5 (12...b5? 13.Bxb5) 13.
Nc2 dxc3 14.dxc3 h6 15.Bd2 Be7
16.a3 b5 17.b4 c4 18.Be4 0-0 19.
Ncd4 Nxd4 20.Nxd4 f5 21.Bxd5
exd5 22.e6 Be8 23.Bf4 Bd6 24.
Bxd6 Qxd6 25.f4 Ra7 26.Qe5 Qb6
27.Qxd5 Re7 28.Re5 Rf6 29.Rae1
Bxh5 30.Rxf5 Bf3 31.Qc5 Qxc5 32.
bxc5 Bg4 33.Rd5 g6 1-0

Sicilian Najdorf B90

Selby Anderson 2275
George Trammell 2033

Texas Chp. 2003 (2)

1.e4 c5 2.Nf3 d6 3.d4 cxd4 4.
Nxd4 Nf6 5.Nc3 a6 6.f3 b5 7.Be3
Bb7 8.Qd2 Nbd7 9.g4 Nc5?!

This doesn't feel right. Either
9...h6 or 9...Ne5 look like better
alternatives.

10.g5 Nfd7 11.0-0-0 g6?!

Uh-oh . . . mixing Najdorf and
Dragon motifs.

12.h4 Rc8 13.h5 e5 14.Nb3 b4 15.
Nd5 a5?!



16.Bb5?

The right idea, but 16.Nxc5! is
more incisive. 16...Rxc5 (16...dxc5
17.Nf6+ Nxf6 18.Bb5+ Ke7 19.
gxf6+ Kxf6 20. Bg5+) 17.Bxc5
Bxd5 18.Qxd5 Nxc5 19.Bb5+ Nd7
20.hxg6 fxg6 21.Qe6+ Qe7 22.Rxd6
Qxe6 23.Rxe6+-.

16...Bc6?

16... Nxb3+ 17.axb3 Bc6 is no
fun for Black, but he can play on.

17.Nxc5 Nxc5

17...dxc5 18.Nf6+! Nxf6 (18...
Qxf6 19.gxf6 Bxb5 20.hxg6 Nxf6
21.Rxh7 Rxh7 22.gxh7 Nxh7 23.
Qd5+-) 19.Bxc6+ Ke7 20.gxf6+-.
18.Bxc5 Bxb5 19.Bb6 1-0

Sicilian B23

Mark Dejmek 2185
Barry Endsley 2032

Texas Chp. 2003 (2)

1.e4 c5 2.Nc3 e6 3.Nf3 Ne7 4.d4
cxd4 5.Nxd4 d5 6.exd5 Nxd5 7.
Bb5+ Bd7 8.Nxd5 exd5 9.0-0 Be7



10.Nf5 0-0 11.Bxd7 Qxd7 12.Qxd5
Bf6 13.Qxd7 Nxd7 14.Be3 b6 15.
Bd4 Bxd4 16.Nxd4 Rac8 17.Rfe1
Rfe8 18.Kf1 Kf8 19.Rxe8+ Kxe8
20.Re1+ Kd8 21.c3 Nc5 22.Re3
Na4 23.Re2 Nc5 24.Nf5 Ne6 25.
Nd6 Rc7 26.Nxf7+ Rxf7 27.Rxe6
Kd7 28.Re3 Kd6 29.Ke2 Kd5
30.Rd3+ Kc6 31.f3 Re7+ 32.Kf2
Ke7 33.f4 g6 34.g4 Rf7 35.Kg3
R7 36.f5 gxf5 37.gxf5 Re1 38.f6
Rf1 39.Rf3 1-0

Round 3

Scotch Opening C45

Mikhail Langer 2267
Sonny Kamberi 2343

Texas Chp. 2003 (3)

1.e4 e5 2.Nf3 Nc6 3.d4 exd4 4. Nxd4 Bc5 5.Be3 Qf6 6.Nb5 Bxe3 7.fxe3 Qh4+ 8.g3 Qxe4 9.Nxc7+ Kd8 10.Nxa8 Qxh1 11.Qd6 Nf6 12.Nc3?!

Nobody seems to play this move unless they first throw in 12.Qc7+. Perhaps Mikhail was trying to avoid Sonny's home preparation. 12...Qf3 13.Kd2 Re8 14.Qc7+ Ke7 15.Be2 Ne4+ 16.Nxe4 Qxe4 17. Rd1 Kf8 18.Qf4 d6

Why not try 18...Qd5+ 19.Ke1 (19.Kc1 Qxa2 20.Bc4 Qa1+ 21.Kd2 Qa5+ 22.c3 Re7) 19...Qc5 20.Qd6+ Qxd6 21.Rxd6 Rxe3=+/-. 19.Nc7 Re7 20.Qxe4 Rxe4 21.Bf3 Re5 22.Rf1 Rc5



23.Bd5??

Oops. 23.Nd5 is okay for White.
23...Nd8 0-1

Center Counter B01

Ali Morshedi 2156
Selby Anderson 2275

Texas Chp. 2003 (3)

1.e4 d5 2.exd5 Nf6 3.d4 Bg4 4.Nf3 Qxd5 5.Be2 Nc6 6.c4 Qf5 7.Be3 0-0-0 8.Nbd2 e5 9.d5 Bxf3

More common is the immediate 9...Nb4.

10.Bxf3 Nb4 11.Ne4?



Right idea, wrong time. 11.0-0 Nc2 12.Be4 Nxe4 13.Qxc2 Ng3 14. Qxf5+ Nxf5 15.Ne4 and material remains even.

11...Nxe4 12.a3 [12.Bg4?? Nc2+] 12...Nf6?

12...Nxf2 13.Kxf2 Nc2 looks miserable for White. [Or 13.Bxf2 Nd3+! 14.Kf1 Nxf2 15.Kxf2 e4 -+.] Perhaps Selby forgot that 14.Bg4, winning his queen, is impossible since the bishop is pinned.

13.axb4 Bxb4+ 14.Kf1 a5 15.g4! Qg6 16.h4 Nd7 17.c5 Bxc5 18. Bxc5

18.Rxa5!? may be better: 18... Bxe3 19.Ra8+ Nb8 20.fxe3.

18...Nxc5 19.Rxa5 Qd3+ 20.Qxd3 Nxd3 21.Ke2 Nf4+

21...Nxb2? 22.Rc1 leaves the Black knight stranded. [21...Nb4?!] 22.Ke3 Kd7 23.Rb5 Kd6 24.Rc1 Rb8 25.Rbc5 Rbc8 26.g5 f5 27.gxf6 gxf6 28.Ke4 c6?!

Two other moves look stronger: 28...Ra8 to get a passive rook back into the game, or; 28...f5+! 29.Ke3 (29.Kxf5?? Nd3).

29.dxc6 bxc6 30.Kf5 Rxb2 (30... Rb6!?) 31.Rxc6+ Rxc6 32.Rxc6+ Kd7 33.Rxf6 Rxf2 34.Bg4 Ke7 35. Ra6 Ng6+ 36.Kg5 Nf8 37.Bf5 Rg2+ 38.Kh6 Kf7 39.Be4 Rh2 40. h5 Rh3 41.Ra7+ Kf6 Draw

Gruenfeld Exchange D85

John Patty 2200
Gheorghe Secheli 2084

Texas Chp. 2003 (3)

1.d4 Nf6 2.c4 g6 3.Nc3 d5 4.cxd5 Nxd5 5.e4 Nxc3 6.bxc3 Bg7 7.Nf3 c5 8.Rb1 0-0 9.Be2 Nc6 10.d5 Ne5 11.Nxe5 Bxe5 12.Qd2 e6 13.f4 Bg7 14.c4 exd5 15.cxd5 Bd4 16. Bb2 Qb6 17.Bd3 c4



Still in known territory.

18.Bxd4 Qxd4 19.Bc2 Qc5 20.Qf2 Qa5+ 21.Qd2 Qxa2

Risky, grabbing this pawn. Still, taking risks is what makes chess games interesting. Vigorous play is required from White if he's going to have a chance to punish Black. 22.0-0 Qa6 23.f5!

Simple and strong, making way for the queen to head to the kingside and invade on the dark squares.

23...gxf5 24.e5!?

Going for complete domination. 24...Bd7 25.Rf3

White has many attractive choices here. 25.Bxf5 Bxf5 26.Rxf5 f6 27.Qh6 +-; 25.d6 (cutting the Black queen off from the kingside) 25...f6 26.Qd5+ Kh8 27.e6 +-.

25...b5 26.Rg3+

26.Qc3! looks very strong, getting the queen on the critical a1-h8 diagonal. Neither myself nor Fritz 8 can find a satisfactory defense for Black. The best the machine could

come up with is 26...Be6 (26...f6 27.e6 Be8 28.Bxf5 and White has either a winning kingside attack or a pair of passed central pawns that are going to cost Black material) 27.Rh3! Qb6+ 28.Kf1! (keeps the Black queen out of f2) and Black doesn't have time to both defend his King and his hanging bishop on e6 (28...Bxd5? 29.Bxf5).

26...Kh8 27.e6

27.Qc3 Be6 28.dxe6 fxe6+/-
27...Qb6+

If 27...fxe6!? White can bail out with 28.Rg6 hxg6 29.Qh6+ Kg8 30.Qxg6+ Kh8 31.Qh6+, etc.
28.Kh1 fxe6 29.dxe6 Qxe6 30.Re1 Qc6 31.Qd4+?

31.Re7!? Rae8 32.Rxd7 and White recoups his material investment. Still, if White's attack peters out, then the trio of Black queenside pawns look quite dangerous.
31...Rf6 32.Re7 Re8

Black can still give back material with 32...Qd6 33.Rxd7 Qxd4 34.Rxd4.
33.Rgg7

Since Black has allowed White to maintain the pin against the Rf6, White should continue 33.Qe5! and Black doesn't appear to have any good moves. 33...Rg8 (33...Qd6 34.Rxe8+ Bxe8 35.Qxe8+ Rf8 36.Qxb5 +; 33...Qe6 34.Rxe6 Rxe6 35.Qc3 +-) 34.Rf7 Rxc3 35.hxg3 Qe6 36.Qxf6+ Qxf6 37.Rxf6 b4 38.Rf8+! Kg7 39.Rb8 b3 40.Bxb3 cxb3 41.Rb7+.
33...Qd6??

Under pressure, Black blunders. He must give up his bishop with 33...Rxe7 34.Rxe7 Qd6 35.Rxd7 Qxd4 36.Rxd4 a5 and get his queenside pawns moving.

34.Rxh7+ Kg8 35.Rhg7+ Kf8

Or 35...Kh8 36.Qh4+ Rh6 37.Rh7+ Kg8 38.Qg5+ Rg6 39.Rhg7+ Kh8 40.Qh5+ Rh6 41.Rh7+ Kg8 42.Qf7 mate.

36.Qxd6

It's mate in one.

Scotch Game C45

George Trammell 2033

Drew Sarkisian 2151

Texas Chp. 2003 (3)

1.e4 Nc6 2.d4 e5 3.Nf3 exd4

4.Nxd4 Nf6 5.Bg5

A little-played sideline, avoiding stacks of mainline theory.

5...Be7

5...h6 6.Nxc6 bxc6 7.Bxf6 Qxf6 8.c3 Bc5 9.Qc2 0-0 10.Bd3 also looks fine for Black.

6.Nf5 h6

This appears to be a novelty. Castling is common here.

7.Nxe7 hxg5 8.Nxc6 bxc6 9.Nc3 Qe7 10.Qd4 d6 11.Be2 Bd7 12.0-0-0 c5 13.Qe3 Qe5!?



Not played with the idea of winning a pawn, but to eye the b2 square, and to encourage White's next move.

14.g3? (14.h3) 14...g4

A multi-purpose move. The g-pawn attempts to fix the h2 pawn as a target, and also prevents White from taking over the center with 15.f4 (i.e. 15...gxf3 e.p. looks good for Black).

15.Nd5 Rb8 16.Nxf6+?! gxf6 17.c3 Be6?

The immediate 17...f5 is better. The text gives White an interesting possibility.

18.Rd2

White can attempt to take advantage of the fact that Black hasn't castled with 18.h3!? Bxa2 (18...gxh3?? 19.f4+-) 19.hxg4 Rxh1 20.Rxh1 Ke7 21.Rh5 Qe6 22.g5!? fxc5 23.Qxg5+ Qf6 24.Qe3 ± with a possible e5-break coming up.

18...f5 19.exf5 Qxe3 20.fxe3 Bxf5 21.Rf1 Be6 22.Rf4

White wins a pawn with this rook lift. The question is whether the rook is out of play after winning the pawn.

22...Rg8 23.Ra4 Bd7 24.Rxa7 Kd8 25.Bc4 Re8 26.Rf2 f5 27.Re2 Bc6 28.Bd3 Bf3 29.Re1 Rh8 30.e4?!

30.Bxf5 Rxh2 31.b3 and the rook on a7 defends the a-pawn.
30...c4?

Not so good is 30...Rxh2?! 31.exf5 Rxb2 32.f6; the simple 30...fxe4 should give Black a winning advantage: 31.Bxe4 Re8 32.Bxf3 Rxe1+ 33.Kd2 Rf1 34.Bxg4 Rxb2+ 35.Ke3 Rxh2+.

31.Be2?

Returning the favor. 31.Bxc4 Rxh2 32.exf5! Rxb2 33.Bb3 and the White f-pawn, combined with the Ra7, causes Black significant problems.

31...fxe4 32.Bxe4

Giving Black an easy endgame win. 32.Ra5 had to be tried

32...Re8 33.Bxf3 Rxe1+ 34.Kd2 Ra1 35.Bxg4 Rxb2+ 36.Ke3 Raxa2 37.Rxa2 Rxa2 38.h4 Kg7 39.Bf3 c5 40.Bd1 Rg2 41.g4 Rf3+ 42.Bf3 Rh3 43.h5 d5 44.g5 d4+ 45.cxd4 cxd4+ 46.Kf4 c3 47.Bg4 Rh4 0-1

King's Indian E98

James Rohrbaugh 2237

Ali Morshedi 2156

Texas Chp. 2003 (3)

1.c4 Nf6 2.Nc3 g6 3.e4 d6 4.d4

Bg7 5.Be2 0-0 6.Nf3 e5 7.0-0 Nc6

8.d5 Ne7 9.Ne1 Ne8 10.Be3 f5 11.

f3 f4 12.Bf2 h5 13.c5 g5 14.a4 Rf6

15.a5 Rg6 16.Kh1 g4 17.Nb5 g3

18.Bg1 h4 19.cxd6 Nxd6 20.Nxa7



20...Rxa7!?

Very ambitious. Black's light-squared bishop often plays a crucial role in kingside attacks; Black's idea is to preserve this piece without losing time.

21.Bxa7 h3 22.Rg1! gxh2

Stronger is 22...hxg2+!? 23. Rxc7 Bh3 and if 24.Rg1 (24.hxc3 Bxc2+ 25.Nxc2 Rxc3 26.Kg1+/-) 24...Nec8 opens the d8-h4 diagonal with tempo, letting the Black queen join the attack

23.Kxh2 Nc6 24.Bf2

24.dxc6?? Qh4 25.Bc4+ Kh7 and White is finished; 24.gxh3 Rh6 25. dxc6 Bxh3 26.Bc4+ Be6+ 27.Kg2 Bxc4 looks much easier for Black than for White

24...hxg2 25.Rxc7

25.dxc6?? and it's mate in four: 25...Rh6+ 26.Bh4 Qxh4+ 27.Kxc7 Bh3+ 28.Kh1 Bf1 mate.

25...Rh6+ 26.Kg1 Nd4 27.Bxd4 Qh4!?

Black's attack appears to be over after 27...exd4 28.Qxd4 Ne8, so he throws a piece onto the fire. 28.Bc5 Qh1+ 29.Kf2 Qh4+ 30.Kf1 Qh1+ Or 30...Bh3 31.a6 bxa6 32.Rxa6, and Black doesn't have enough fuel to continue the attack.

31.Bg1?

Trying to get more wood around his own king, but this backfires. 31.Rg1! Bh3+ 32.Ng2 looks like a win for White, i.e. 32...Qh2 33.Bd3 Rg6 34.Qe2.

31...Bh3

32.Kf2

32.Bd3 Rg6 33.Qc2 Bf6! (this piece is going to eliminate the defending knight on e1) 34.a6 (White needs open lines for counterplay) 34...bxa6 35.Rxa6 Bh4 36.Ra8+ Kg7 37.Qxc7+ Nf7 38.Ra7 Bxc2+ 39. Ke2 Bf1+! 40.Kd2 Rf6 and Bad Things can happen to White if he goes for too much. For example: 41. Bxf1 Qxc1 42.Nd3 Qxf1 43. Nxe5 Bf2! 44.Rb7 Be3+ 45.Kc3 Qc1+ 46. Kb3 Rb6+!! 47.Qxb6 Bxb6 48. Rxf7+ Kg8 49.Re7 Bd4 50.Nc4 Qd1+ 51.Kb4 Qxf3, and I suspect that Black can stop White's passers, while White's going to have trouble with the Black f-pawn.

32...Bxc2 33.Nxc2 Rg6 34.Qf1 Bf8 35.Rc1 Nf7 36.Rc2

Going for counterplay with 36. Rxc7 doesn't seem any better now, since 36...Bb4 37.Bb5 Rg3 and Black is going to recover a piece after getting his bishop on the g1-a7 diagonal.

36...Bb4 37.Bc4

Maybe 37.Bb5, trying to get the bishop into the fight via d7 or e8: 37...Bxa5 38.b4 Bb6+ 39.Ke1 Bxc1 (not 39...Qxc1 40.Qxc1 Bxc1 41. Nh4 with advantage to White) 40.Be8.

37...Nd6 38.Bd3

38.a6 bxa6 39.Bxa6 doesn't seem to make much of a difference.

38...Bxa5 39.b4 Bb6+ 40.Ke1 Bxc1 41.Kd1 Qh3 42.Ne1 Draw

Round 4

Selby Anderson 2275

Larry Moss 2200

Texas Chp. 2003 (4)



24.Rxf7 Kxf7 25.Be3 Nc2 26.Qh4 Qxe3 27.Qxh7+ Ke8 28.Bxc6+ 1-0

Ruy Lopez C77

Marek Dejmek 2185

Peter Yeh 2018

Texas Chp. 2003 (4)

1.e4 e5 2.Nf3 Nc6 3.Bb5 a6 4.Ba4 Nf6 5.d3 b5 6.Bb3 Be7 7.c3 d6 8.Nbd2 0-0 9.Nf1 Be6 10.Ng3 Nd7

Better is 10...d5 11.exd5 Nxd5 12.0-0 and the position looks even. 11.Bc2 f5?!



Giving up the light-squared bishop like this cannot be right. Again, 11...d5 looks reasonable.

12.exf5 Bxf5 13.Nxf5 Rxf5 14.d4 Rf8 15.Be4 Ndb8 16.dxe5 dxe5 17.Qb3+ Kh8 18.0-0 Na5 19.Qe6! Ra7 20.Qh3 1-0

Sicilian Dragon B74

Joshua Newsham 2063

Federico Garcia 2264

Texas Chp. 2003 (4)

1.e4 c5 2.Nf3 d6 3.d4 cxd4 4.Nxd4 Nf6 5.Nc3 g6 6.Be3 Bg7 7.Be2 Nc6 8.0-0 0-0 9.Nb3 Be6 10.f4 Rc8 11.g4 Na5 12.g5 Nd7

12...Rxc3! appears strong. If 13.gxf6 (13.bxc3 Nxe4 14.Bd3 Nxc3 15.Qe1 Nc6 =/+) 13...Rxe3 14.fgx7 Re8 15.Bb5 Nxb3 16.axb3 Qb6 and Black is better.

13.Rf2 Nc4 14.Bxc4 Bxc4 15.Nd4 Qa5 16.h4 Rfe8 17.h5 e5?

This gives White a free hand on the kingside. Perhaps 17...Nc5 is a better alternative.

18.Nb3 Qd8



19.f5 f6

The cold-blooded 19...Nb6!? may be playable.

20.fxg6 fxg5 21.h6! Bf6

21...Bxh6 22.Qh5 Re6 23.Qxh6 Rxg6 24.Qh3+-.

22.Qh5

Federico thought that 22.g7!? was a strong alternative. Josh wanted to keep the kingside situation more fluid

22...hxg6 23.Qxg6+ Kh8 24.Nd5 Bxd5 25.exd5 Qe7

25...Rc4!? is a reasonable attempt to trade off some of White's attacking forces: 26.Raf1 Rg4+ 27.Rg2 Rg8 28.Qf5 Rxg2+ 29.Kxg2 +/-.

26.Raf1 Rf8 27.Nd2! Rf7 28.Ne4 Rg8 29.Qf5 Rff8 30.Qe6 Rg6 31.Nxf6

Quicker is 31.Rxf6 Qxe6 32.Rxe6, but it doesn't matter anymore.

31...Qxe6 32.dxe6 Nxf6 33.e7 Re8 34.Rxf6 Rxf6 35.Rxf6 Rxe7 36.Rxd6 Re8 37.Kh2 Rc8 38.c3 b5 39.Bxg5 b4 40.Rd8+ 1-0

Round 5

Bogo-Indian E11

Babakouly Annakov 2527

Mark Diesen 2467

Texas Chp. 2003 (5)

1.d4 Nf6 2.Nf3 e6 3.c4 Bb4+ 4.Bd2 Qe7 5.e3 Bxd2+ 6.Nbxd2 d6 7.Be2 O-O 8.0-0 Draw

Center Counter B01

John Cole 2262

Selby Anderson 2275

Texas Chp. 2003 (5)

1.e4 d5 2.exd5 Nf6 3.Nf3 Qxd5 4.Nc3 Qa5 5.d4 Bf5 6.Bc4 c6 7.Bd2 e6 8.Nd5 Qd8 9.Nxf6+ Qxf6 10.Qe2 Nd7 11.0-0-0 Nb6 12.Bb3 Bg4 13.d5 Bxf3 14.gxf3 cxd5 15.Qb5+ Nd7

Until Black's last, the game followed Karpatchev-Kuehn, 2001, which continued 15...Kd8 16.Rhg1 Kc7 17.Bg5 Qf5 18.a4. White's got to be a bit better here.

16.Ba4

John played this quickly, forgetting that Black can still castle!

16.Bxd5!? a6 (not 16...exd5? 17.Rhe1+ Be7 18.Bb4 Qh6+ 19.Kb1 0-0 20.Bxe7+/-) 17.Qe2 Bd6+/-.

16...0-0-0 17.Be3 a6 18.Qa5 Bd6 19.Bd4 e5 20.Ba7 Bc7 21.Qb4 Nb6 22.Bb3 Nc4 23.Bxc4 Qf4+ 24.Be3 Qxc4 25.Qxc4 dxc4 26.Rhg1

Rxd1+ 27.Kxd1 g6 28.b3 cxb3 29.axb3 f5 30.Ke2 Rd8 31.h4 Rd6 32.h5 f4 33.Bc1 Ba5



34.hxg6 hxg6 35.Rg5 Bc3 36.Rg1 Kd7 37.Rh1 Ke6 38.Rh8 a5 39.Rc8 Rc6 40.Rxc6+ bxc6 41.Kd3 Be1 42.Ke2 Bb4 43.Kd3 Kf5 44.c3 Bc5 45.Ke2 g5 46.Bd2 Bb6 47.c4 e4 48.fxe4+ Kxe4 49.f3+ Kd4 50.Be1



50...a4?

This forces a liquidation into a drawn ending. 50...Ke5 looks to offer good winning chances:

1) 51.Kf1 Kf5 52.Kg2 g4 53.fxg4+ Kxg4 54.Bc3 f3+ 55.Kf1 Kf5 56.Ke1 Ke4 57.Kd2 Kf4 58.Ke1 Ke3 59.Bd2+ Kd3 60.c5 Bxc5 61.Bxa5 Bd4+-, or

2) 51.c5 Bc7 52.Kd3 Kf5 53.Ke2 g4 54.fxg4+ Kxg4 55.Kf2 f3 56.Bd2 Be5 57.Bxa5 Bd4+ 58.Kf1 Bxc5 +.

51.bxa4 Kxc4 52.a5! Ba7 53.a6 Kb5 54.Bc3 Kxa6 55.Bf6 Kb5 56. Bxg5 Be3 57.Kd3 Kb4 58.Kc2 c5 59.Be7 Kc4 60.Bg5 Kd5 61.Bh6 c4 62.Bg5 Kc5 63.Be7+ Kc6 64. Bg5 Kd6 65.Kc3 Kd5 66.Kc2
Draw

Round 6

Modern Benoni A67

Selby Anderson 2275
Mikhail Langer 2267

Texas Chp. 2003 (6)

1.d4 Nf6 2.c4 c5 3.d5 e6 4.Nc3
exd5 5.cxd5 d6 6.e4 g6 7.f4 Bg7
8.Bb5+ Nfd7 9.Bd3

Fashion varies here. Many players prefer to insert 9.a4 first.

9...Qh4+ 10.g3 Qd8 11.Nf3 0-0 12. 0-0 a6

Krush-Hebert, 2001 continued 12...Na6 13.Re1 Re8 14.Bf1 b6 15. Nb5 Nf6 16.e5 dxe5 17.fxe5 Nxd5 18.Nd6 Ndc7 19.Bg5 Qd7 20.Nxe8 Qxe8 21.Bf6 Ne6 22.Bg2 Bb7 with some advantage to White.
13.a4 Nf6 14.Kg2 Bg4 15.h3 Bxf3+ 16.Qxf3 Nbd7 17.Bd2 Ne8



Another way to play it is to move the rook to the half-open file: 17...Re8 18.Rae1 Qb6 19.b3 c4 20. Bxc4 Rac8 21.Re2 Qc7 22.Rfe1 Nb6 23.Bd3 Nfd7 24.Rc1 Nc5 25.Nd1 Qe7 as in Kwiatkowski-Nikolaevsky, 1959, which was eventually drawn.

18.g4 Rc8 19.b3 Rb8 20.Rab1 Qa5 21.e5 dxe5 22.f5 Qd8 23.g5 e4 24. Bxe4 Ne5 25.Qg3 Nd6 26.Bc2 gxf5 27.Bxf5 b5 28.axb5 axb5 29. Bc2 Re8 30.Rbe1 Rb7 31.h4 c4 32. b4 Rbe7 33.h5 Qd7



33...Nd3 looks necessary: 34. Bxd3 cxd3 and if White continues 35.Rxe7 Rxe7 36.g6 hxg6 37.hxg6 fxe6 38.Qxg6 it appears that 38... Nc4 secures sufficient counterplay.
34.Rf6! Kh8

If 34...Nc8 35.Bf5 Qd8 36.Rh6 Nd6 37.Bc2! and the terrible White rook continues its rampage through the Black position.
35.h6 Bxf6??

Tantamount to resigning, but 35...Bf8 36.Ra1 Qd8 37.Ra6! Nc8 38. d6 and Black cannot avoid material losses. [After 35...Bf8 I had intended 36.f4, but after 36...Nd3! Black is okay.]

36.gxf6 Rg8 37.Qg7+!!

It's mate in seven!

37...Rxc7+ 38.hxc7+ Kg8 39. Bxh7+! 1-0

39...Kxh7 40.Rh1+ Qh3+ 41. Rxx3+ Kg6 42.g8(Q)+ Kxf6 43. Qg5 mate.

Sicilian Dragon B76

Wellington Rocha 2469

Ali Morshedi 2156

Texas Chp. 2003 (6)

1.e4 c5 2.Nf3 d6 3.d4 cxd4 4. Nxd4 Nf6 5.Nc3 g6 6.Be3 Bg7 7.f3

0-0 8.Qd2 Nc6 9.0-0 d5

This pawn sacrifice is extremely popular. Also played are 9...Nxd4 and 9...Bd7.

10.exd5 Nxd5 11.Nxc6 bxc6 12. Nxd5 cxd5 13.Qxd5 Qc7 14.Qc5 Qb7 15.Qa3 Bf5 16.Bd3 Rab8 17. b3 Qc6 18.Bxf5



18...Qc3!?

An innovation, found over the board by Ali.

19.Bd3 Rfd8! 20.Qc5?!

Another way is 20.Bc5 Rxd3 (not 20...Rbc8?? 21.Bb4+-) 21.Rxd3 Qa1+ 22.Kd2 Qxh1 23.Qxa7 Qxg2+ 24.Kc1 with a sharp struggle ahead. As played, White is obliged to sacrifice his queen.

20...Qb2+ 21.Kd2 Rbc8 22.Qxc8 Rxc8 23.Qxa7 Qxa2 24.Be3 Bc3+ 25.Ke2 Kg7 26.h4 h5 27.g4 hxg4 28.fxe4 Qa8 29.Rdgl Rc6 30.Rh3 Re6 31.Bc4 Rxe3+ 32.Rxe3 Bd4 33.Rxe7?

Better is 33.Rf1 Qg2+ 34.Rf2 Qxg4+ 35.Kd3 Bxe3 36.Rxf7+ Kh6 37.Kxe3 Qxh4 38.c3, but I'm having a hard time believing that Black isn't winning here...the g-pawn will be very difficult to stop.

33...Bxgl 34.Rxf7+ Kh8 35.h5 g5

No need for such caution. 35... Qg2+ 36.Kd3 Qxg4 37.Rf8+ Kh7 38.c3 is winning for Black.

36.Kd3 Qe8 37.c3 Qe3+ 38.Kc2 Qe4+ 39.Bd3 Qg2+ 40.Kb1 Qxg4 41.Bg6

No better is 41.Bc2 Qe6 42.Rh7+ Kg8 43.h6.
41...Qd1+ 42.Kb2 Qd2+ 43.Kb1 Qxc3 0-1

Round 7

Nimzo-Indian E21

Babakouly Annakov 2527
Selby Anderson 2275

Texas Chp. 2003 (7)

1.d4 Nf6 2.Nf3 e6 3.c4 Bb4+ 4. Nc3 Ne4 5.Qc2 f5 6.e3 b6 7.Be2 Bb7 8. 0-0 Bxc3 9.bxc3 d6 10.Ne1 Nd7 11.f3 Ng5 12.Nd3 0-0 13.c5 Draw

Gruenfeld Defense D91

Mark Diesen 2467
John Cole 2262

Texas Chp. 2003 (7)

1.d4 Nf6 2.Nf3 g6 3.c4 Bg7 4.Nc3 d5 5.Bg5 Ne4 6.cxd5 Nxf6 7. Nxf6 7.c3 Be7 8.Bd3 0-0 9.Ne5

Modern Benoni A65

Ali Morshedi 2156
Sonny Kamperi 2343

Texas Chp. 2003 (7)

1.d4 Nf6 2.c4 g6 3.Nc3 Bg7 4.e4 d6 5.f3 0-0 6.Bd3 c5 7.d5 e6 8. Nge2 exd5 9.cxd5 Re8 10.Be3 Nbd7 11.Ng3 a6 12.a4 Rb8 13.0-0 h5 14.Re1 Ne5 15.Be2 h4 16.Nf1 Nh7 17.Nd2 g5 18.Qc2 Ng6 19. Nc4 Nf4 20.Bf1 Nf8 21.a5 N8g6



22.Qa4

Keeping an eye on Black's aggressive intentions with 22.Qd2 was probably a better idea.
22...Bd7 23.Qa3 Qe7 24.b4!? cxb4 25.Qxb4 Bb5 26.Nxb5 axb5 27. Qxb5 Bxa1 28.Rxa1 Ne5 29.Nd2 Rec8 30.Nb3

Better is 30.Rb1!?, putting latent pressure against the rook on b8.
30...h3 31.Nd4 hxg2 32.Bxg2 Rc3 33.a6??

33.Bxf4 gxf4 34.Qb2.
33...Rxe3 34.a7 Ra8 35.Nf5 Qc7 36.Nxe3 Qc3

Black wins a piece. 0-1

French Defense C10

Mikhail Langer 2267
Andres Suarez 2071

Texas Chp. 2003 (7)

1.e4 e6 2.d4 d5 3.Nd2 dxe4 4.Nxe4 Nd7 5.Nf3 Ngf6 6.Nxf6+ Nxf6 7.c3 Be7 8.Bd3 0-0 9.Ne5

A more patient approach is to castle immediately.
9...c5 10.dxc5 Qd5 11.Qe2!?

Amazing! White's giving up his g-pawn with tempo.
11...Qxg2 12.Rf1 Bxc5 13.h4 h6??



A funny point (well, funny if you're not poor Andres): Fritz 8 considers this howler after a minute or so of calculation, seeing no danger. 13...Be7 makes more sense.
14.Bxh6!! gxh6 15.0-0 Kh8 16. Qd2 Ng8

Or 16...Nh7 17.Qxh6 Qg7 18. Qh5 f5 (forced) 19.Ng6+ Kg8 20. Rg1! demolishes the Black defenses.



17.Qf4 Qg7

There is no saving Her Majesty.
17...Qd5 18.Be4 Qxa2 19.Nxf7+ Rxf7 20.Qxf7 +-.

18.Rg1 1-0

London System D02

Keith Hayward 2281
Drew Sarkisian 2151

Texas Chp. 2003 (7)

1.d4 Nc6 2.Nf3 d5 3.Bf4 Bf5 4.e3 a6 5.Be2 e6 6.0-0 Nf6 7.c4 Bd6 8. Bxd6 Qxd6 9.Nc3 h6 10.a3 Ne4

Not being terribly satisfied with the opening, I offered a draw. In retrospect, a silly decision. - I think that Black is okay here.

11.Nxe4 Bxe4 12.Rc1 dxc4

12...e5 13.cxd5 Bxd5 14.dxe5 Nxe5 15.Nxe5 Qxe5 looks playable.

13.Nd2 Bd3?! 14.Nxc4

During the game, I was more concerned about 14.Bxd3 cxd3 15. Ne4 Qd5 16.Qxd3 0-0 17.Nc5 and White keeps an annoying advantage.
14...Bxc4 15.Bxc4 0-0 16.Ba2 Ne7 17.Bb1 Rfc8 18.Qf3 c6 19.h4 Rf8 20.Rfd1 f5 21.g3 Nd5 22.Re1 Nf6 23.Ba2 Kh8 24.Qf4 Qd7 25.Qe5 Rfe8 26.Rcd1 Rad8 27.Bb3 Qe7 28.Kg2 Nd7 29.Qf4



29...g5?!

After the game, Keith commented that I "was really asking for it" with this move. At the time I disagreed, but he may be right. In any case, we were both playing to win.

30.hxg5 hxg5 31.Qf3?

Much more testing is 31.Qc7! Rb8 32.Rh1+ Kg7 33.Rh5 Rh8 34.Rxh8 Rxh8 35.Bc4 Rb8 and Black's tied up.

31...Nf6 32.Bc2 Kg7 33.e4 fxe4 34.Bxe4 Nxe4 35.Rxe4 Qf6 36.Qe3 Rd5 37.Re1 Rf5 38.f3?!

I didn't like this move, weakening White's second rank. 38.Re2 looks better to me.

38...Kf7 39.Re2 Qh6 40.Rh4 Qg6 41.Rh3 (41.Rh1) 41...Rd5 42.Qe4 Kg7 43.Qg4 e5! 44.Rh5 Rxd4 45.Qxg5

Not 45.f4?? gxf4 46.Qxg6+ Kxg6 47.Rhxe5 Rxe5 48.Rxe5 Rd2+ 49.Kf3 fxg3+.

45...Qxg5 46.Rxg5+ Kf6 47.Rh5 Re7 48.Kf2 Rd3 49.g4 Rb3 50.Rh6+ Kg5 51.Rh5+ Kf6 52.f4 e4 53.Kg2 Rd7 54.Rh6+ Kg7 55.Rh3 Rdd3 56.Rxd3

... and Keith offered a draw. Morshedi, Tia and Suarez had all lost by this time. I toyed with getting greedy and going for the win, but I then considered three facts:

1. I had only 30 minutes left in the sudden death time control vs. Keith's 50+ minutes;

2. taking the draw guaranteed me a minimum of \$230; and ...

3. I had no idea who (if anybody) was winning this position. So...

Draw

Sicilian Defense B53

Albert Yeh 2018

Mark Dejmek 2185

Texas Chp. 2003 (7)

1.e4 c5 2.Nf3 d6 3.d4 cxd4 4.Qxd4 Bd7 5.c4 Nc6 6.Qd2 Nf6 7.Nc3 a5?!

I don't understand this move at all.

8.Bd3 a4 9.0-0 g6 10.Nd5 Bg7 11.Rb1 Bg4 12.Qe3 0-0 13.Bd2 Bxf3 14.Qxf3 Ne5 15.Qe2 Nxd5 16.cxd5 Nxd3 17.Qxd3 Qd7 18.Rfc1 Rfc8 19.b4 Bf6 20.h3 h5 21.f4 Rxc1+ 22.Rxc1 Rc8 23.Rc4 Kh7 24.Qc2 Bd4+



25.Kh1?? (25.Kh2) 25...Rxc4??

Missing 25...Qb5, winning a rook. If 26.Rxc8 Qf1+ 27.Kh2 Bg1+ mates 28.Kh1 (28.Kg3 Qf2 mate) 28...Bf2+ 29.Kh2 Qg1 mate.

The winner of this game would tie for 1st Expert if Morshedi lost. Pressure can create weird blunders. 26.Qxc4 Bb6 27.b5 Qc7 28.Qxc7 Bxc7 29.Bb4 Kg7 30.g4 hxg4 31.hxg4 Bb6 32.e5 Bc7 33.exd6 Bxd6?

Black needs to keep the bishops on with 33...exd6. Black's a-pawn will fall, but with minors on the

game continues. The pure pawn ending is hopeless for Black.

34.Bxd6 exd6 35.g5 Kf8 36.b6 f5 37.Kg2 Ke7 38.Kf3 Kd7 39.Ke3 Kc8 40.Kd4 Kb8 41.Kc4 Kc8 42.Kb4 Kd7 43.Kxa4 Kd8 44.Kb5 Kd7 45.a4 Kc8 46.a5 Kb8 47.a6 bxa6+ 48.Kxa6 Ka8 49.Ka5 Kb8 50.b7 Kxb7 51.Kb5 Kc7 52.Ka6

52.Ka6 Kc8 53.Kb6 and White mops up on the sixth rank.

1-0

AMATEUR GAMES

Reti Opening A09

Satya Modugula 1585

Paul Haney 1928

Texas Amateur 2003 (1)

1.Nf3 d5 2.c4 d4 3.b4 g6 4.Bb2 Bg7 5.g3 e5 6.Bg2 Ne7

6...e4 7.Ng1 Qe7! looks better for Black.

7.d3 c5 8.bxc5 Qa5+ 9.Qd2 Qxc5 10.Ba3 Qc7 11.0-0 Nbc6 12.Qc2 0-0 13.Nbd2 Re8

13...f5 looks reasonable, preventing White's next.

14.Ne4!

The d6 square is going to be Black's sore spot for the rest of the game.

14...b6

14...Rd8.

15.Rfc1 Bb7 16.c5! b5 17.Nfg5 b4



18.Rab1!?

18.Qb3 looks even stronger: 18...Rf8 (18...bxa3?? allows mate in 3 after 19.Nf6+! Bxf6 20.Qxf7+ Kh8 21.Qxh7 mate) 19.Nd6 and if 19...bxa3 White has 20.Ngxf7 Na5 21.Qe6 Bc8 22.Nh6+ Kh8 23.Ndf7+ Rxf7 24.Nxf7+ Kg8 25.Qd6!+-.

18...a5

18...bxa3 19.Nd6 Reb8 20.Qc4 and White's threats against f7 win material: 20...Nd8 21.Bxb7 h6 22.Bxa8 hxg5 23.Rxb8 Qxb8 24.Be4.

19.Nd6 Rf8 20.Rf1 Rad8

20...Nd8.

21.Bc1 Rxd6

Disgusted with the White steed, Black sacrifices the Exchange to eliminate it. Black could have tried 21...Ba8 22.Qb3 Nf5 23.Ndx7! Rxf7 24.Bd5 Rxd5 25.Qxd5 Nh6 instead.

22.cxd6 Qxd6 23.f4 Nd5 24.f5 Nc3?

Inserting 24...gxf5 25.Rxf5 first allows Black to maintain his knight after 25...Nc3.

25.f6! Bxf6 26.Ne4 Nxe4 27.Bxe4 Rc8 28.Qb3 Rc7 29.Bd2 Nd8 30.Bxb7 Nxb7 31.Rbc1 Rxc1 32.Rxc1 Kg7 33.Qc4 Be7 34.Qb5 Nd8

Black needs to eliminate the queenside pawns by 34...Nc5 35.Qxa5 b3.

35.Qxa5 f5

Weakening the seventh rank only helps White activate his rook, but Black's position is beyond repair in any case.

36.Rc4 Qf6 37.Qa7 Kf8 38.Rc8 Qd6 39.Rb8 Qd5 40.Qb6 (40.Qc7) Kf7 41.Bxb4 Nc6 42.Rb7 Ke8 43.Bxe7 Nxe7 44.Qc7 Qe6 45.a4 e4 46.Rb8+ Kf7 47.Qc4 exd3 48.Rf8+ Kxf8 49.Qxe6 d2 50.Qf6+ 1-0

Center Counter B01

Joe Alexander 1455

Jonathan Harris 1749

Texas Amateur 2003 (2)

1.e4 d5 2.exd5 Nf6 3.d4 Nxd5 4.

c4 Nf6 5.Nc3 Bf5 6.Nf3 e6 7.Be2 c5 8.0-0 Be7 9.Re1 0-0 10.h3 Nc6 11.Be3 cxd4 12.Nxd4 Nxd4 13.Bxd4 a6 14.Bf3 Rc8 15.b3 Qd7 16.Rc1 Rfd8 17.Bb6 Qxd1 18.Rexd1 Re8 19.g4

Not 19.Bxb7 Rb8 20.Bc6 Rxb6 21.Bxe8 Nxe8 =/+.

19...Ba3?!

19...Bg6, threatening 20...Ba3, is better. 20.g5 Bh5 21.gxf6 Bxf3 22.fxe7 Bxd1 23.Rxd1 Rxe7 is better for White, but is an improvement over the game continuation for Black.

20.gxf5 Bxc1 21.Rxc1 exf5 22.Rd1 Re6 23.Bxb7

White's queenside pawn mass, plus two pieces for the rook, are more than enough to win.

23...Rb8 24.Rd8+ Re8 25.Rxe8+ Nxe8 26.Bc6 Rxb6 27.Bxe8 Kf8 28.Ba4

28.Bd7! and the c-pawn is already threatening to run home: 28...f4 (28...g6?? 29.c5 Rb7 30.c6 forces Black to sacrifice his rook for the bishop and pawn. i.e. 30...Rxd7 31.cxd7 Ke7+-).

28...g5 29.a3

29.c5 Rb8 30.Bd7! Ke7 31.Bxf5. 29...g4 30.hxg4 fxg4 31.c5 Rb8 32.b4 Ke7 33.Kg2 h5 34.Nd5+ Ke6 35.Nc7+ Ke5 36.Nxa6 Ra8 37.b5 h4 38.c6 Kd6 39.c7 Kd7 40.b6+ Kc8 41.Bb5 Kb7 42.a4

42.Nb8, threatening Bc6+, finishes matters a bit more quickly.

42...Kxb6 43.Bd7 Kb7 44.Bxg4 Rg8 45.Kh3 1-0

Sicilian B22

Jason Howell 1956

Mark Gracey 1798

Texas Amateur 2003 (2)

1.e4 c5 2.c3 Nf6 3.e5 Nd5 4.d4 cxd4 5.cxd4 Nc6 6.Nf3 d6 7.exd6 Qxd6 8.Be2 g6 9.0-0 Bg7 10.Nc3 0-0 11.Be3 Nf4!? 12.Bc4 Bg4 13.h3 Bxf3 14.Qxf3 Ne6



15.Ne4?

15.Bxe6 fxe6 16.Qe4+/-.

15...Nexd4 16.Qg4?

The queen is a target here. White needed to start groveling a bit with 16.Qd1.

16...Qb4 17.Bd5 e6?

Black slips. 17...Rad8 18.Bxc6 (18.Bb3? Ne5 and White loses material: 19.Qd1 Ndf3+ [or 19...Nxb3 20.Qxb3 Qxe4]) 18...bxc6 and White has no good posts for his pieces. For example, 19.Ng3 (19.a3 Qxb2 20.Bxd4 (20.Ng5 Nc2+-) 20...Rxd4 21.Qf3 Rfd8+-) 19...f5! 20.a3 (20.Qh4 Nf3+-; 20.Qd1 f4+-) 20...Qb3 21.Qh4 Nc2 and White's position falls apart.

18.Bxc6 Nxc6?

Letting White back into the game. 18...bxc6 19.Qd1 Nf5-/+ 19.Bc5 Qxb2 20.Bxf8 Rxf8 21.Ng5 b6 22.Qh4 h6 23.Nf3 Qa3 24.Rac1 Ne7 25.Rc7 Nd5 26.Rc2 Nb4 27.Rc4 a5 28.Qe7 Qxa2 29.Rfc1?

Natural, but runs into a cute rejoinder.

29...Nd5! 30.Qb7 Qb2?

30...Nc3!, with the threat of 31...Ne2+, wins the Exchange back. 31.R4xc3 Bxc3 32.Qxb6 (32.Rxc3?? Qa1+) 32...a4+

31.Rc8 a4 32.R1c2 Qb1+

32...Qa3 still keeps Black's winning chances alive.

33.Rc1 Qb2

Draw

QP Zukertort D05

Terry McCaslin 1765

Richard Petty 1994

Texas Amateur 2003 (4)

1.d4 e6 2.Nf3 Nf6 3.e3 c5 4.Bd3 d5 5.b3 Qc7 6.Bb2 cxd4

Relieving the central tension this way favors White, who gets the half-open e-file and the e5 square for operations. Salwe-Leonhardt, 1907 continued 6...c4 7.bxc4 dxc4 8.Be2 b5+/=.

7.exd4 Bd6 8.Nbd2 Nc6 9.a3 a5 10.c4 b6 11.0-0 0-0 12.Qe2 Ne7 13. Rac1 Qa7 14.Ne5 Ng6 15.f4 Ba6? 15...Qe7



16.Kh1

16.Bxg6! hxg6 17.Nxg6 picks off a pawn (if 17...fxg6 18.Qxe6+ followed by 19.Qxd6). White spots this idea a few moves later.

16...dxc4 17.bxc4 Rac8 18.Nxg6

Taking with the bishop first would give White a crucial tempo at the end of the combination (see the following note).

18...hxg6 19.Bxg6 Nd5?

Black fails to take his chance. 19...Qe7 protects the Bd6 and hits the White pawn on a2. This would have been impossible if a White knight were sitting on g6 at this time. The move played gives White a raging attack.

20.Bd3 Nxf4

The natural 20...Nf6 runs into 21.d5! Rfd8 22.Ne4 Nxe4 23.Qxe4 f5 24.Qxe6+; 20...Ne7 is brutalized in a similar manner: 21.d5 Rfd8 22. Qg4!.

21.Rxf4! Bxf4 22.Qe4 g6 23.Qxf4 Qe7 24.d5 g5 25.d6 (25.Qe4) 25... gxf4 26.dxe7 Rfe8 27.Bf6 Bb7 28. Ne4 Bxe4? 29.Bxe4 Rc5 30.Rc3 1-0

Danish Gambit C44

Richard Roseborough 1600

Robert W. Clark 1974

Texas Amateur 2003 (4)

1.e4 e5 2.Nf3 Nc6 3.d4 exd4 4.c3 dxc3 5.Bc4

The Danish Gambit is not a common visitor to tournament chess nowadays.

5...cxb2 6.Bxb2 d6

More common is 6...Bb4+. Heilpern-Pick, 1910 continued 7.Nc3 Nf6 8.e5 Ng4 9.0-0 0-0 10.Nd5 Bc5 11.h3 Nh6 12.Qd2 Nf5 13.Qf4 d6 14.Rad1 with some compensation for the material.

7.Nc3 Be6 8.Nd5 Na5 9.Be2 c6 10.Nf4 Bc4 11.0-0 Bxe2 12.Qxe2 Ne7



13.e5!

13.Nh5 Rg8 14.Ng5 h6 15.Nh7 Qc8 16.Rfd1 looks okay for White too.

13...d5 14.e6 f6 15.Ng5?

This allows Black to give back material to break White's initiative.

15.Nh4! looks very strong: 15...g6 (15...Qc7 16.Qh5+ Kd8 17.Nfg6 Nxg6 18.Nxg6 hxg6 19.Qxh8+/-) 16.Bxf6 Rg8 17.Nf3 Nc4 18.Nd3 Bg7 19.Bxg7 Rxg7 20.Nde5 Nxe5 21.Qxe5 Kf8 22.Rfe1 and White's piece coordination may be worth the pawn investment.

15...fxg5 16.Qh5+ g6 17.Nxg6 Nxg6 18.Bxh8 Qe7 19.Be5 0-0-0+ 20.Bc3 Nc4 21.a4 d4

21...Nf4 22.Qd1 d4 23.Bd2 Nxd2 24.Qxd2 Qxe6+.

22.Qe2 dxc3 23.Qxc4 Bg7 24.a5 Rd4 25.Qxc3?

This pawn was untouchable, but it wouldn't matter in the long run.

25...Ra4! 26.Qe3

26.Qxg7 Qxg7 27.Rxa4 doesn't help matters.

26...Rxa1 27.Qxa7 Rxf1+ 28.Kxf1 Qxe6 29.Qa8+ Kc7 0-1

Sicilian Dragon B71

Frank Brack 1939

David Phillips 1997

Texas Amateur 2003 (5)

1.e4 c5 2.Nf3 d6 3.d4 cxd4 4. Nxd4 Nf6 5.Nc3 g6 6.f4 Nc6 7. Nxc6 bxc6 8.e5 dxe5 9.Qxd8+ Kxd8 10.fxe5 Ng4 11.Bf4 Bh6 12. 0-0-0+ Kc7 13.Bxh6 Nxh6 14.Bc4 Bg4

Apparently a new move. 14... Rhf8 is often played instead.

15.Rde1 Rad8 16.a3 Bc8 17.Rhf1 Rhf8 18.Ne4 Rd4 19.b3 Bf5



20.Ng5?!

Rambunctious. 20.Nd2 Rfd8 21. Nf3 Rg4 22.Rf2+/=.

20...f6??

An uncharacteristic blunder from Phillips. Black gets the advantage with 20...Rg4 21.h4 Rxd2-/+.

21.Rxf5! 1-0

King's Indian E92

Joe Drake 1893

Tres Roring 1912

Texas Amateur 2003 (7)

1.d4 Nf6 2.c4 g6 3.Nc3 Bg7 4.e4 d6 5.Be2 0-0 6.Nf3 e5 7.dxe5 dxe5 8.Qxd8 Rxd8 9.Bg5 Re8 10.Bxf6

10.Nd5 promises more chances for a White advantage. As played, Black gets in c7-c6 (a move common in this system) with gain of time.

10...Bxf6 11.Nd5 Bd8 12.0-0 c6 13.Nc3 Bb6

Better is an immediate 13...Nd7, heading for the e6 square via c5 or f8.

14.Rhf1 Bc7 15.Nd2 Nd7 16. Bg4?!

A nice idea, getting rid of a potentially bad bishop (assuming White's planning on pushing f2-f3 at some point). Unfortunately, this hits a small tactical snag . . .



16...Nc5?

. . . which Black misses. 16...f5! 17.exf5 Nf6 followed by 18...gxf5 gives Black a small edge.

17.Bxc8 Raxc8 18.Kc2 a5

More to the point is 18...Rcd8. 19.b4 Ne6 is fine for Black.

19.Nb3 Nxb3 20.Kxb3 b6? 21.Rd7 Red8 22.Rfd1 Rxd7 23.Rxd7 Kf8 24.Kc2 Ke8 25.Rd3 Rd8 26.Rf3 Ke7 27.g4 h6 28.a3 Ke6 29.b4 axb4 30.axb4 Rd4 31.Kb3 Rd2 32.b5 c5?

This makes the Black bishop worse than it needs to be. 32...cxb5 is indicated.

33.Nd5 Bd8 34.Kc3 Ra2 35.Kd3 Ra3+ 36.Nc3 Bg5 37.Kc2 Ra8

The beginning of a bad plan. Keeping the rook active with 37... Ra1 should be enough to hold the balance.

38.Nd5 Bd8 39.Kb3 Rb8 (39...Ra1) 40.Kb2 Rb7 41.Ra3 Rb8 42.Ra7 f5?

Opening up the seventh rank for White's rook can't be good. Black needs to play waiting moves like 42...Bg5 and react to White's play.

43.gxf5+ gxf5 44.f3 fxe4 45.fxe4 h5 46.Rg7 h4 47.Rh7 Kd6 48.Rh8 Kd7 49.Kc2



49...Rb7 50.Rh7+!

Correctly evaluating the minor piece ending as won.

50...Kc8 51.Rxb7 Kxb7 52.h3 Bg5 53.Kd3 Bh6 54.Ke2 Bg5 55.Kf3 Bd2 56.Kg4 Be1 57.Ne3 Kc7 58. Ng2 Bg3 59.Nxh4 Bxh4 60.Kxh4 Kd7 61.Kg5 1-0

UTD Bugs

by Alexey Root

The University of Texas at Dallas had a number of players competing in the Texas State Championship, most notably John Cole, who finished in third with a FIDE rated performance of 2367. On Sunday night of the state championship, some UTD players competed in the state bughouse championship.

I played alongside UTD freshman Eric Wiggins, who is rated in the top ten bughouse players internationally. We named our team *UTD Bugs*, in recognition of the strong bug presence at UT-Dallas. Besides Wiggins, FM Dennis Rylander (from Sweden, famous for top bug players), FM Andrew Whatley, Ali Morshedi, and IM Dmitry Shneider all play over-the-board bug with some frequency.

At the state championship bug tournament, UTD students Enrique Rios and Andres Suarez each partnered with K-12 players.

UTD Bugs won the five-round tournament with a 10-0 score, with each round consisting of two games. In second place was *Germ Warfare*, composed of UTD scholarship winner Alex Chua and George Cullen. *Germ Warfare* had 8 points. The best under 3600 team was *Huevos Rancheros* (Gilbert Davila and Adrian Diaz) with 6 points. The best under 3000 team was *The Mavs Fans* (Jeffrey and Robert Carpenter), with 5 points.

Twelve teams participated, and Jeffrey Sneden directed.

For more information about the UT-Dallas Chess Program, please email Dr. Alexey Root, aroot@utdallas.edu.

Alexey Root is Associate Director of the UTD Chess Program.

Jim Gallagher: an appreciation

by Selby Anderson

A top chess master in South Texas, and a chess teacher of national caliber who started the first chess school in the U.S., has left us. James Joseph Gallagher died May 10 of an apparent heart attack in his San Antonio apartment. He was 46.

His impact on the lives of hundreds of children was aptly summed up by his father in the *Express-News*: "Few chess masters became so involved in the lives of their students; he was a champion of and for the children."

Highlights of his tournament career include tying for first in the Southwest Open (1990), sharing in the Texas state championship title (1989), and winning the San Antonio city championship four times (1987, 1991, 1992, 1993), in each case with clear first.

He was an avid team player, and six times he shared in the Texas team championship title. He took pleasure in creating colorful names for his teams, such as "Fleet Wood Sac," "Texas Pawn Chain Massacre," and in the wake of the 2000 election, "Dimpled Chads."

A memorial gathering was held May 18 at Lions Field, drawing 87 people – friends, former chess students and their parents, Jim's father, and his sisters Cathie and Renee. Many shared their stories at the podium that afternoon.

Sid Pickard, a chess book publisher in Dallas, e-mailed this remembrance:

I first met Jim Gallagher in 1981, at the Memphis Chess Club. Friendly and outgoing, Jim soon became a regular fixture at my apartment, where we passed countless hours in combat at chess. Often the rising sun would find us still testing whatever variation



captured our attention at the moment. All told, I suppose we played over a thousand blitz games together. The point is that I was able to closely observe Jim under many conditions, and to note those sterling qualities he possessed in abundance. As a chess player Jim had all the traits we might expect of a master – discipline, mental toughness, patience, optimism, endurance, intellectual honesty, and a host of others. In fact, Jim became a chess master long before his rating proved the case.

After he reached his initial goal of 2200, about 18 months before I did, Jim liked to tease me that I had "pounded" him to the master title . . . while he had merely pounded me! Kidding aside, it was during those months that I saw another fine aspect of Jim's personality. Every day would bring some word of encouragement, or positive advice, or helpful comment; he cheered me on, and, when I finally reached 2200 my-

self, nobody was happier for me than Jim Gallagher. He had a truly generous spirit.

Jim attended my wedding in 1985, and my wife and I honeymooned in Las Vegas – with Jim at the National Open! After the tournament Jim gave us a casino chip of large denomination as a wedding present, and the three of us had some serious fun for a couple of days. We left Jim, who was riding a lucky streak at the poker tables, and went on to San Francisco before returning home to Memphis. About a month later my new wife and I could no longer resist the lure of bright lights, so we returned to Las Vegas for a long weekend. And there we found Jim Gallagher, still playing poker, and enjoying the life of a professional gambler with casino "comps" and free drinks. By now he prided himself on being able to spot easy marks among the "tourists." A few days later my wife and I went home to Memphis, and about six weeks later Jim arrived back in town. He said that the gambler's life was okay for a while, but it was time to get back to work. Later I discovered that some "tourist" had absorbed Jim's bankroll at the poker table, and that a stop at the Western Union office was needed for his return air fare.

There are many great Jim Gallagher stories, more than time allows to tell them. Someone has only to mention "Butt outsky, Budinsky!" to make me laugh. Or his incredulous "Oh, really?" when one luckless opponent resigned much, much too late. And I remember watching Jim at a tournament game, suffering in a

terrible position. When his opponent left the room, Jim took the opportunity to throw his head back and sing a full-volume chorus of the Beatles' "I'm a Loser" in the tournament hall.

Sorry Jim, you were wrong. You were never anything remotely like a loser. What you were was an outstanding friend, and I will miss you. I will miss Jim Gallagher very much.

Jim's ashes were flown to Ohio to be with his mother's.

I think Jim identified with the hulking barbarian warrior on his trademark Molly Hatchet shirt that he liked to wear to chess tournaments for good luck. ("Hell yeah!" it read.) Jim loved combat on the board, on the football field, and in lively debate about anything you could name.

Before Jim was a chess master he occasionally hustled pool. Yet he was honorable: When he came to San Antonio in 1987 he got hustled out of \$300 by a future chess student who bet he could win using a broomstick. It took years, but Jim finally paid off the debt.

His greatest payment to those who knew him was how he shared his love of chess with the world. He became a full-time chess teacher soon after coming to San Antonio. He continued what Pandolfini and Weeramantry had begun in New York, setting a high standard of excellence in his teaching.

He was eloquent, passionate, and spontaneous. He was a marvellous jokesmith and storyteller. A natural showman, he even brought chess to local TV programming. With help from a chess student who worked at Paragon cable, Jim produced a series of shows called *Chess Moves*, with a polish rarely seen in public access. People tuned

in to watch, and they came to his chess school.

San Antonio businessman Vernon Friesenhahn helped Jim get set up in 1991 with a storefront in the heart of the old silk-stocking neighborhood of Alamo Heights. Inside, oversize posters of chess greats looked down from the walls. GM Yasser Seirawan was invited to the grand opening, and he put on a chess show for all of San Antonio to see, with news cameras rolling. The school was off to a flying start . . . like one of the pre-Wright brothers planes, as it turned out.

After three years of operating at a loss, Jim lost his patronage and moved shop uptown to a series of locations with lower rent. The last one was ideally situated, near the Medical Center and Loop 410. But the San Antonio Chess Studio was an economic no-starter, and he fell back on teaching after-school and summer programs geared to elementary and middle school students.

Gallagher could teach at the college level, if there was a course offering in chess. He had a fast, agile yet profound mind. In college he had majored in philosophy, and he could discuss relativity or basketball with equal aplomb.

He had the personal touch, getting to know each student by name and chess style. It seemed that he had something unique to say for each child when he passed out prizes, down to the last place Honorable Mention.

When Jim stated an opinion, he left no doubt about where he stood. He possessed great personal charm, but had little use for diplomacy, or indeed anything that smacked of insincerity or hypocrisy.

His quarrels were many and famous. Jim lived up to his Irish inheritance, not only in his charm and eloquence but in his temper. He did not suffer fools gladly; and woe to

anyone he believed was cheating. Although he could at times be blinded by the blaze of his zeal, his sincerity and fundamental honesty shone through. He always tried to fight the good fight.

Here are some of his best.

"Just Like the Old Masters"

That is how Gallagher titled this game when it appeared in *Texas Knights* almost 15 years ago. In an old-fashioned king hunt reminiscent of Morphy vs. Amateur, Gallagher sacrifices first a bishop, then a rook to draw his quarry out into the open.

Notes by NM Jim Gallagher

French Rubinstein C10

Jim Gallagher 2215

Bob Epstein 2230

Texas Class Chp. 1988

1.e4 e6 2.d4 d5 3.Nc3 dxe4 4. Nxe4 Nc6!? 5.Nf3 b6

Already we've reached uncharted territory. MCO and BCO scarcely mention Black's idea, while NIC and ECO give only 4... Be7 6.c3 Nf6 7.Bd3 0-0 8.Qc2 h6 9.Bd2 b6 10.0-0-0 Bb7 11.Nxf6+ Bxf6 12.Rhe1 ± with a kingside attack, and 4...b6 5.Nf3 Bb7 6.Bb5+ c6 7.Bd3 Nf6 8.Nxf6+ gxf6 9.Bf4 ± (Keres). Analysis, but no game references.

In the current position I analyzed 6.Bb5 Bb7 7.Ne5 Qd5 8.Qf3 0-0-0, unclear.

6.Bd3 Bb7 7.c3 Be7

7...Nf6?! 8.Nxf6+ gxf6 ±; 8... Qxf6?? 9.Bg5 +.

8.0-0 Nf6 9.Qe2 Ne4 10.Be4

10.Qxe4!?

10...0-0 11.Bf4

The plan of Qe2 and 0-0-0 is no less convincing than Keres' Qc2 and 0-0-0 because it discourages Black's queenside castling and still keeps central and kingside possibilities alive. The position is now ±.

11...Na5?!

Black's position is difficult because White threatens Rad1 and Ne5, but decentralizing is rarely the answer.

12.Rfe1!

Truly devious and possibly the best move of the game. White controls all four central squares because of the masked attack on the Be7.

12...Bd6?!

Was this move enticement or oversight? What we have here is the classic "French sac" position with a twist!



13.Bxh7+! Kxh7

13...Kh8 14.Bxd6 and White is simply a pawn up.

14.Ng5+ Kg6

14...Kg8 15.Qg5 Re8 16.Qxf7+ and mate in four is old hat.

15.Qd3+

15.Qg4? fails flat to 15...f5!

But now 15...f5 fails beautifully to 16.Rxe6+ Rf6 17.g4!! Be4 (17...Bxf4 18. Qf5+ Kh6 19.Nf7#) 18. Rxe4 Bxf4 (18...fxe4 19.Qxe4+ Kh6 20.Qh7#) 19.Rxf4 Kg5 20. Rxf5+ Kg6! 21.Rxf6+ Kxf6 22. Qf5+ Ke7 23.Re1+ Kd6 24.Qe6#!

Finally, for those who must know, 15...Kh5 loses to 16.Qh7+ Kg4 17.f3+ Bxf3 (17...Kxf4 18. Nh3#) 18.gxf3+ Kxf4 19.Nh3+ Kxf3 20.Qe4#.

These lines are cute but not very original. Still, the clock continues to tick...

15...Kf6! 16.Nh7+ Ke7 17.Bg5+!

17.Bxd6+? Qxd6 18.Nxf8 Rxf8 =+.

17...f6 18.Qg6 Rf7?



Black misses his opportunity to return the material and make a game of it. 18...fxg5?? is impossible due to 19.Qxe6 mate, but 18...Bxh2+! 19.Kxh2 (19.Kh1 Qd5 20.Qxg7+ Kd6) 19...Qd6+ 20.Kg1 Rf7 is a complex position with many possibilities. White's best appears to be 21.Re5! Nc6 22.Rae1 Nd8 and now White should shun the extravagant 23.Rf5?! and quietly improve his position, e.g. 23.Bh4 Bd5 24.b3 b5 25.R5e3, preparing a break at c4 that should prove decisive.

19.Rxe6+! Kxe6 20.Re1+ Kd7

20...Kd5 21.Qe4+ Kc4 22.d5+ Kb5 23.Qd3+ transposes into the game. If 20...Be5 then 21.Rxe5+ Kd6 22.Qxf7 (22.Bf4!?) Qd7 23. Qxd7+ Kxd7 24. Nxf6+! +/-.

21.Qf5+! Kc6 22.d5+ Kb5 23. Qd3+ Nc4 24.a4+ Ka5 25.Qc4 1-0 25...Ba6 26.b4+ Bxb4 27.Qxb4 mate.

Modern Benoni A79

Igor Shtern 2418

Jim Gallagher 2199

Dallas New Year 1988/89

1.d4 Nf6 2.Nf3 e6 3.c4 c5 4.d5

exd5 5.cxd5 d6 6.Nc3 g6 7.e4 Bg7 8.Be2 0-0 9.Nd2 Re8 10.0-0 Na6 11.f3 Nc7 12.a4 b6 13.Nc4 Ba6 14.Bg5 h6 15.Bd2 Bxc4 16.Bxc4 a6 17.Rb1 Nd7 18.b4



18...Qf6 19.Be1 Qd4+ 20.Qxd4 Bxd4+ 21.Kh1 b5 22.axb5 Bxc3 23.Bxc3 axb5 24.Bb3 c4 25.Bc2 Ra2 26.Rf2 Ne5 27.Kg1 g5 28.Bd4 f6 29.h3 Rea8 30.Rc1 R8a3 31.f4 Nd3 32.Bxd3 Rxf2 33.Kxf2 Rxd3 34.Bxf6 gxf4 35.Rc3 Rd2+ 36.Kf3 Kf7 37.Bd8 Na6 38.Ba5 Rd3+! 39. Rxd3 cxd3 40.Bb6 (40.Kf2 Kf6) Nxb4 41.Ba5 Nc2 42. Kxf4 b4 43. Kf3 Kf6 44.g4 Ke5 45.h4 Nd4+ 46.Ke3 d2 47.Kxd2 Nb3+ 48.Kd3 Nxa5 49.g5 hxg5 50.hxg5 Nb7 51. Kc4 Nc5 52.g6 Nxe4 53.g7 Nf6 54. Kxb4 Kxd5 55.Kc3 Ke4 56.Kc4 d5+ 57.Kc5 d4 0-1

English Opening A26

Jim Gallagher 2246

Miles Ardaman 2470

Texas State Chp. 1998 (6)

1.c4 e5 2.Nc3 d6 3.g3 g6 4.Bg2 Bg7 5.d3 Ne7 6.e4 0-0 7.Nge2 Nbc6 8.0-0 Rb8 9.Bg5 h6 10.Be3 Nd4 11.Qd2 Kh7 12.f4 f5 13.Rf2 a6 14.Raf1 c5 15.fxe5 dxe5 16. Nd5 b5 17.b3 Nxd5 18.cxd5 Qd6 19.Kh1 Bd7 20.b4!? Rbc8!

20...cxb4?! 21.Nxd4 ... (a) 21... f4!? 22.gxf4!! exd4 23.e5 de3 24. Qxe3 with the idea of d4, d6, d5,

e6!; (b) 21...exd4 22.Bf4 Be5 23. Bxh6 with a strong kingside attack. 21.bxc5 Qxc5 22.Qb2 Qc2 23. Nxd4

23.Bxd4?! exd4 24.Qa3 Qc5! 25. Qxa6?? Ra8 26.Qb7 Ra7 +-. 23...Qxb2 24.Rxb2 exd4 25.Bd2 fxe4 26.Rxf8?!

Diverting the KB from the long diagonal does not stop it from making mischief. Gallagher offered 26. dxe4 as an improvement. One possibility: 26.dxe4 Rxf1+! 27.Bxf1 d3 28.Rb3 Rc2 29.Rxd3 Rxa2 30.Bc3 a5 31.Bxg7 Kxg7 32.e5 b4 33.e6 Bb5 34.d6! Bxd3! 35.Bxd3 Kf6 36.e7 Ra1+ 37.Kg2 Re1 38.Bxg6 a4 39. e8(Q) Re8 40.Be8 a3 41.d7 Ke7 42.Bf7 Kxd7 43.Kf3 +-. 26...Bxf8 27.dxe4 Ba3

Ardaman's pieces began to circle like vultures. Most observers assumed White would get pushed off the board; but mutual time pressure was also becoming a factor.

28.Rb3 Bc1 29.Bb4 Be3 30.Ba3 a5 31.e5 b4 32.Bb2 Bf5 33.e6 g5 34.h3 h5 35.e7 Kg6 36.d6 Kf7 37.Bd5+ Ke8



38.Bxd4 Rc1+ 39.Kg2 Bxd4 40. Rf3 Rc2+?

On the last move of time control, Ardaman misses a win with 40...Bxh3+! (a) 41.Kh2 Rc2+! 42. Kh3 g4+ 43.Kh4 gxf3 44.Bxf3 Bf6+ 45.Kxh5 Bxe7 -+; (b) 41.Kxh3 g4+ (b1) 42.Kh4 gxf3 43.Bxf3 Bf6+ 44.

Kxh5 Bxe7 45.dxe7 Kxe7 -+; (b2) 42.Kg2 gxf3+! 43.Bxf3 (43.Kxf3 Be5 -+) 43...Kd7 44.Bxh5 Re1 -+. 41.Kf1 Bxh3+ 42.Ke1 Bc3+ 43. Kd1 Rd2+ 44.Kc1 Rxd5

Black has to bite the bullet and allow queening. But White's labors are just beginning! With no mating net in sight, he must incubate his d-pawn and hatch another queen.

45.Rf8+ Kd7 46.Rd8+ Kc6 47. e8(Q)+ Kc5 48.d7 Bd2+ 49.Kb2 Bc3+ 50.Kb3 Kd4 51.Qe2 a4+ 52. Kxa4 Bg4 53.Qf2+ Kd3 54.Qf1+ Kc2 55.Qf7 Rd2 56.Kb5 Kc1 57. Kc6 h4 58.gxh4 gxh4 59.Qf4 Be6 60.Qxh4 Kb2 61.a4! b3

61...bxa3 allows 62.Rb8 with check, and the d-pawn promotes.

62.Qe4 Bh3 63.Qe3 Bg2+ 64.Kc5 Rc2 65.Kb6 Bd2 66.Qd4+ Bc3 67. Qd3 Rd2 68.Qxd2+ Bxd2 69.Rf8!

Also good is 69.Rg8 Be3+ 70. Ka6! (70.Kc7? Bf4+ 71.Kc8 Bh3! =) 70...Bf1+ 71.Kb7 +-. 69...Bg5

More testing is 69...Be3+ 70.Ka5 (70.Kc7 Ka2 71.d8(Q) b2 ∞!) 70... Bd2+ 71.Kb5 Ka2 72.d8(Q) b2 73. Qxd2 +-. 70.Rf2+ Ka3 71.Rg2 b2 72.Rxb2

1-0

Sid Pickard writes: "The following game is an interesting fight, complete with sudden strokes and oversights. What makes the game memorable for me, however, is the extended "debate" Jim and I carried on for 2-3 days afterwards. Before the advent of Fritz, we simply tested moves: Gallagher would suggest a try, and I would offer a counter. These notes were found among my papers recently.

French Defense C16

Jim Gallagher 2250

Sid Pickard 2197

Memphis Invit. 1985

1.e4 e6 2.d4 d5 3.Nc3 Bb4 4.e5 Qd7 5.a3 Bf8 6.h4 h5 7.Be2 g6 8.g4

hxg4 9.Bxg4 c5 10.dxc5 Nc6 11. Nf3 Bxc5 12.Bg5 Qc7 13.Qe2 Nd4 14.Nxd4 Bxd4 15.Nb5 Qxe5 16. Nxd4 Qxd4

16...Qxg5 17.hxg5 Rxh1+ 18. Kd2 Rxa1 19.Qb5+ Kf8 20.Bd1 Δ c3, Nc2, Qb3-a2.

17.Rd1 Qxb2 18.Rxd5 Ne7 19.Rd1 Bd7 20.0-0

20.Rh3!? Δ 20...Bc6? 21.Bxe6.

20...Bb5



21.Qf3

21.Qe3 Bxf1 22.Bxe6 0-0 23. Bxe7 Bb5;

21.Qd2 Qxa3 22.Qd4 Rh7 23.c4 (23.Ra1 Nc6) 23...Bc6

(a) 24.Rd3 Qa5 25.Ra1 (25.Qd6 Qxg5) (25.Qf6 Ng8) 25...Qxg5;

(b) 24.Qf6 Qc5 25.Rfe1 Rd8 26. Rxd8+ Kxd8 27.Bxe6 fxe6 28.Qf8+ (28.Rxe6 Kd7) (28.Qxg6 Qf5) 28... Kc7;

(c) 24.Ra1 Qb3 25.Rfb1 Qc2 26. f3 Rd8 27.Qf6 Rd7 28.Rc1 Qb3 29. Rcb1 (29.Rxa7? Qb6+) 20...Qxc4.

21...Bxf1 22.Bf6 Be2 23.Qf4 Rxh4 24.Bxh4 Bxd1 25.Qd6 Nd5

25...f6!?!; 25...Nc6.

26.Bxe6 fxe6 27.Qxe6+ Kf8 28. Qxd5 Bxc2 29.Bg5 Qb1+ 30.Kg2 Qd1?

30...Qg7 31.Qd2 Kg8 32.Qxc2 Qf7 =+.

31.Bh6+ Ke8 32.Qe6+ Kd8 33. Bg5+ Kc7 34.Bf4+ Kd8 35.Bg5+ Kc7 36.Bf4+

Draw

FM Rocha wins Texas Action title

by Selby Anderson

FM Wellington Rocha of Brazil won the Texas Action Championship, held Apr. 26 in San Antonio. With a FIDE rating of 2419 he was clearly favored and defeated Shaw, Vergara, Sarkisian, Patty, and myself without too much trouble.

Mikhail Langer, a two-time former Texas Action champion, took clear second with 4.5. He drew Asher Alperovich in Rd. 4, and was paired down against Doug Huddleston in Rd. 5 while I played Rocha.

Angela Alston directed a field of 63 players, the largest in the event's 13-year history. The TNI conference room at the South Texas Medical Center was a more than adequate playing site.

Sicilian Najdorf B90

Selby Anderson 2272
Karl Disher 1872

Texas Action Chp. 2003 (1)

1.e4 c5 2.Nf3 d6 3.d4 cxd4 4. Nxd4 Nf6 5.Nc3 a6 6.f3 e5 7.Nb3 Be6 8.Be3 b5 9.Qd2 Qc7 10.g4 Be7 11.0-0-0 Nbd7 12.g5 Nh5 13. Nd5 Bxd5 14.exd5 Rc8



15.Bh3

15.Na5 Nf4 16.Nc6? Nxd5!
15...b4 16.Bxd7+ Kxd7 17.Qd3 g6

18.Rd2 a5??

18...Qc4 19.Qxc4 Rxc4 20.Na5 Rh4 21.Nc6 Ng3 22.Rg1 Nf5 with play for both sides.

19.Qb5+ Kd8 20.Bb6 1-0

Pirc Defense B07

Joaquin Fox 1657

Doug Huddleston 2083

Texas Action Chp. 2003 (1)

1.e4 d6 2.d4 Nf6 3.Nd2 e5 4.d5 g6 5.f3 Nh5 6.Nb3 Qh4+ 7.Kd2 a5 8. a4 Bh6+ 9.Kc3 Bg7 10.Be3 0-0 11. Ne2 f5 12.g3 Qe7 13.Bg2 c6 14. Bb6 cxd5 15.Qxd5+ Be6 16.Qd3 Bh6 17.Be3 d5 18.Bxh6 (18.Bc5 d4+ 19.Nexd4 exd4+ 20.Qxd4 Qc7) Qb4 mate 0-1

Caro-Kann B17

Wellington Rocha 2419

Mitch Vergara 2107

Texas Action Chp. 2003 (2)

1.e4 c6 2.d4 d5 3.Nc3 dxe4 4.Nxe4 Nd7 5.Ng5 Ngf6 6.Bd3 e6 7.N1f3 Bd6 8.Qe2 h6 9.Ne4 Nxe4 10.Qxe4 Nf6 11.Qe2 c5 12.dxc5 Bxc5 13.0-0 0-0 14.Bf4 Qb6 15.c4 Bd7 16.Ne5 Rad8 17.Rab1 a5 18. Rfd1 Rfe8 19.b3 Bc6 20.h3 Nd7 21.Nxc6 Qxc6 22.Qe4 Qxe4 23. Bxe4 e5 24.Bg3 b6 25.Bc6 Bd4 26. Kh2 Re7 27.f4 f6 28.fxe5 fxe5 29. Bh4 Nf6 ... 1-0

Center Counter B01

Doug Huddleston 2083

Selby Anderson 2272

Texas Action Chp. 2003 (2)

1.e4 d5 2.exd5 Qxd5 3.Nc3 Qa5 4.d4 Nf6 5.Nf3 Bf5 6.Bb5+

This seems to give out a free tempo, since I was going to play ...c6 anyway.

6...c6 7.Bd3 e6 8.0-0 Nbd7 9.a3 Bxd3 10.Qxd3 Bd6 11.Rb1 Qh5

12.Ne2 Qg6 13.Qxg6 hxg6 14.Bf4 Bxf4 15.Nxf4 Nd5 16.Nxd5

Black welcomes the minority at tuck structure that results from this trade. 16.Nd3 was the expected move, with a modest space advantage for White, but of little use in the endgame.

16...cxd5 17.b3 b5

17...0-0 18.c4 dxc4 19.bxc4 b6 with chances for both sides.

18.c4 bxc4 19.bxc4 dxc4 20.Rfc1 Nb6 21.Ne5 0-0?!

Practically an oversight, not putting up a fight for the pawn. A more interesting game results from 21...Rc8 22.Rb4 c3 23.Rb3 Nd5! 24. Rb7 0-0 or 24...f6!?! and the c-pawn can be dangerous.

22.Nxc4 Rfc8 23.Nxb6 Rxc1+ 24. Rxc1 axb6 25.Rc3 Ra4 26.Rd3 Kf8 27.Kf1 Ke7 28.Ke2 Kd6 29.Ke3 Kd5 30.Rb3 Kc6 Draw

Sicilian B44

Mikhail Langer 2268

John Paul Hyltin 1956

Texas Action Chp. 2003 (2)

1.e4 c5 2.Nf3 e6 3.d4 cxd4 4.Nxd4 Nc6 5.Nb5 d6 6.c4 Nf6 7.N1c3 a6 8.Na3 Be7 9.Be2 Qc7 10.0-0 h6 11.Be3 Bd7 12.Rc1 0-0 13.h3 Rfe8 14.Qd3 Ne5 15.Qb1 Bc6



16.Nd5 exd5 17.cxd5 Nfd7 18.
dxc6 bxc6 19.Nc4 Nxc4 20.Bxc4
Bf6 21.Bd5 Nb8 22.Qc2 Qa5 23.
Bb3 Qe5 24.Qc4 Re7 25.Qb4 c5
26.Qb6 Nd7 27.Qb7 Rb8 28.Qxa6
Qxe4 29.Qxd6 Be5 30.Qd2 Rc8 31.
Bc2 Qh4 32.Bf5 Rc7



33.Bxc5 Bf4 34.Bxe7 Bxd2 35.
Bxh4 Bxc1 36.Bxd7 Rxd7 37.Rxc1
and 1-0

QGD Exchange D35

John Patty 2200
Paul Haney 1929

Texas Action Chp. 2003 (2)

1.d4 d5 2.c4 e6 3.Nc3 Nf6 4.cxd5
exd5 5.Bg5 Be7 6.e3 0-0 7.Qc2
Nbd7 8.Bd3 Re8 9.Nge2 Nf8 10.0-0
h6 11. Bh4 c6 12.f3 Ne6 13.Rad1
Qc7 14.e4 dxe4 15.fxe4



15...Ng4 16.Bg3 Bd6 17.e5 Be7
18.Bf2 Bg5 19.Kh1 Be3 20.Bg3

Bg5 21.h4 Ne3 22.Qc1 Nxf1 23.
hxg5 Nxc3+ 24.Nxc3 Nxc3 25.
Nb5 Qa5 26.Nd6 Rxe5? 27.dxe5
Qxe5 28.Re1 Qxd6 29.Re8+ Qf8
30.Rxf8+ Kxf7 31.Qc5+ Kg8 32.
Nf5 Be6 33.b3 Rd8 34.Bc4 Ne4
35.Ne7+ Kh8 36.Qxa7 Bg4 37.
Bxf7 Ng5 and 1-0

Caro-Kann Advance B12

James Shaw 1900
Steven Castilleja 1484

Texas Action Chp. 2003 (2)

1.e4 c6 2.d4 d5 3.e5 Bf5 4.h4 h5
5.Bd3 Bg4 6.f3 Be6 7.Be3 g6 8.
Ne2 Nh6 9. Nf4 Qd7 10.Qd2 Nf5
11.Nc3 b5 12.a4 b4 13.Nce2 a5 14.
c3 bxc3 15.bxc3 Bh6 16.Kf2 Nxe3
17.Qxe3 Bxf4 18.Qxf4 Bf5 19.Nc1
Bxd3 20.Nxd3 Na6 21.Rab1 e6
22.Rb6 0-0 23.g4 Rfb8 24. Rxb8+
Rxb8 25.gxh5 c5 26.Qf6 Qd8 27.
Qxd8+ Rxd8 28.hxg6 fxg6 29.Rg1
Kh7 30.Nf4 cxd4 31.cxd4 Rb8 32.
Rxc6 Rxb4 33.Rxe6 Nb8 34.Nxd5
Rd4 35.Nf6+ Kg7 36.Re7+ Kg6
37.h5+ Kf5 38.h6 Rh4 and 0-1

London System D02

Drew Sarkisian 2151
Wellington Rocha 2419

Texas Action Chp. 2003 (3)

1.d4 Nf6 2.Nf3 e6 3.Bf4 d5 4.e3 c5
5.c3 Qb6 6.Qc1 Bd6 7.Bxd6 Qxd6
8.Nbd2 Nbd7 9.Bd3 0-0 10.0-0 b6
11.Qb1 Bb7 12.b4 Rab8 13.Ng5 h6
14.Nh7 Nxh7 15.Bxh7+ Kh8 16.f4
g6 17.Bxc6 fxg6 18.Qxc6 Rf6 19.
Qh5 Ba6 20.bxc5 bxc5 21.Rfb1
Bd3 22.Rxb8+ Qxb8 23.Re1 Kg7
24.h3 Qb2 25.Nf3 Be4 26.Nh4 Rg6
27.Nxc6 Qxc2 mate 0-1

Sicilian Najdorf B95

Alex Echeverry 2032
Mikhail Langer 2268

Texas Action Chp. 2003 (3)

1.e4 c5 2.Nf3 d6 3.d4 cxd4 4.
Nxd4 Nf6 5.Nc3 a6 6.Bg5 e6 7.
Qd2 Be7 8.0-0-0 h6 9.Bxf6 Bxf6

10.f4 Qc7 11.g3 Nd7 12.f5?? Bg5
and 0-1

Modern Benoni A66

Asher Alperovich 2164
Steven Castilleja 1484

Texas Action Chp. 2003 (3)

1.d4 e6 2.c4 c5 3.d5 exd5 4.cxd5
d6 5. Nc3 Nf6 6.e4 g6 7.f4 Bg4!?
8.Nf3 Nbd7 9.Be2 a6 10.a4 Bg7
11.0-0 0-0 12.Re1 Re8 13.h3 Bxf3
14.Bxf3 Qc7 15.Be3 b6?

The diagonal weakening is dan-
gerous. Thematic is 15...c4 Δ ...Nc5.
16.g4 Re7?



17.e5! Ne8 18.e6 Ndf6

18...Nf8 19.f5 is marginally
better.

19.g5 Nh5 20.Bxh5 gxh5 21.f5 f6
22.h4 fxg5 23.hxg5 Bd4 24.Bxd4
cxd4 25.Qxd4 Qc5 26.Qxc5 bxc5
27.f6 Rb7 28. f7+ Kf8 29. fxe8(Q)+
Rxe8 30.Re2 Rb4 31.Rf1+ Kg8 32.
Ne4 1-0

PRIZE WINNERS

1st: Wellington Rocha, 5. 2nd:
Mikhail Langer, 4.5. U2100: J.P.
Hyltin, 4. U1900: Yuri Mirgor-
odsky, 4. U1700: Steven Castilleja,
4. U1500: Albert Marino, Rheanna
English, Johnny Martinez, 3.
U1300: Vincent Gaddis, 3.

Alekhine's Defense B03

Wellington Rocha 2419

John Patty 2200

Texas Action Chp. 2003 (4)

1.e4 Nf6 2.e5 Nd5 3.d4 d6 4.c4 Nb6 5. exd6 cxd6 6.Nc3 g6 7.Be3 Bg7 8.Rc1



White's delayed kingside development is a recent development in the exchange line of Alekhine's. Compare to the line 7.h3 Bg7 8.Nf3 0-0 9.Be2 Nc6 10.Be3 Bf5 11.0-0 d5 12.c5 Nc4 13.Bxc4 dxc4 14.Qa4 Bd3, with counterplay.
8...0-0 9.b3 e6

Patty says he prepared this move. NCO gives 9...f5 (9...Nc6?! 10.d5 Ne5 11.Be2 ±) 10.Nf3 f4 11.Bd2 e5 12.dxe5 dxe5 13.c5 e4 ∞ 10.Nf3 Bd7 11.Qd2 Re8 12.h4 Nc6 13.h5 e5 14.dxe5 Nxe5 15.hxg6 Nxf3+ 16.gxf3 f3g6 17.Qxd6



17...Be5

Patty blamed this for his loss, recommending 17...Bc6 instead; but it looks as though White consolidates nicely with 18.Qxd8 Raxd8 19.Bg2 Bd4 20.Ke2 Re7 21.Ne4. 18.Qd2 Qf6 19.c5 Qxf3 19...Rad8!?

20.Rg1 Rad8 21.cxb6 Bg4 22.Be2 Bxc3 23.Rxc3 Qf6 and 1-0

Scotch Game C47

Mikhail Langer 2268

Asher Alperovich 2164

Texas Action Chp. 2003 (4)

1.e4 e5 2.Nf3 Nf6 3.Nc3 Nc6 4.d4 exd4 5.Nxd4 Bb4 6.Nxc6 bxc6 7.Bd3 d5 8.exd5 cxd5 9.0-0 0-0 10.Bg5 c6 11. Qf3 Bd6 12.Rfe1



12...Rb8 13.Rab1 h6 14.Bh4 Rb4 15.Bxf6 Qxf6 16.Qxf6 gxf6 17.b3 Be6 18. Ne2 c5 19.Ng3 Be5 20.a3 Rb6 21.Kf1 Rfb8 22.Bf5 Bxg3 Draw

Budapest Defense A52

Alex Kroll 2040

Selby Anderson 2272

Texas Action Chp. 2003 (4)

1.d4 Nf6 2.c4 e5 3.dxe5 Ng4 4.Nf3 Nc6 5.Bf4 Bb4+ 6.Nc3 Bxc3+ 7.bxc3 Qe7 8.Qd5 f6 9.exf6 Nxf6 10.Qd1

10.Qd3 is favored by theory, but is still considered unclear.

10...d6 11.e3 0-0 12.Be2 Ne4 13.Rc1 Kh8 14.0-0

Safer is 14.Bg3!, with equality. Kroll used a lot of time in the opening, reinventing an old main line.



14...b6

14...g5! 15.Bg3 h5 -/+ (Tseitlin). 15.Qd5 Bb7 16.Nd4 Na5 17.Qe6 Rae8 18.Qxe7 Rxe7 19.Rfd1 Nc5 20.Nb5 Rxf4 21.exf4 Rxe2 22.Re1 Rxe1+ 23. Rxe1 h6 and 0-1

The ending is messy because of the active rook, but my time advantage was about 15 minutes to 3 at this stage and I got the upper hand.

Sicilian Alapin B22

Doug Huddleston 2083

Rheanna English 1370

Texas Action Chp. 2003 (4)

1.e4 c5 2.Nf3 d6 3.c3 Nf6 4.d4 Bg4 5.Be2 e6 6.0-0 Nc6 7.d5 Ne7 8.Re1 exd5 9.exd5 Nfxd5??



10.Qxd5!

Not 10.Bb5+? Bd7 11.Bxd7+ Kxd7!

10...Qc7

10...Nxd5 11.Bb5 mate!

11.Ng5!

Now the point is 11...Nxd5 12.Bb5+ Kd8 13.Re8 mate.

11...Bxe2 12.Qxf7+ Kd8 13.Ne6+ Kd7 14.Nxc7 Kxc7 15.Rxe2 Rd8 16.Bg5 Rd7 17.Bxe7 Bxe7 18.Rxe7 Rxe7 19.Qxe7+ Kc8 20.Nd2 g6 21.Nc4 a6 22.Nxd6+ 1-0

Sicilian B30

Selby Anderson 2272

Wellington Rocha 2419

Texas Action Chp. 2003 (5)

1.e4 c5 2.Nf3 Nc6 3.Bb5 e6 4.0-0 Nge7 5.Re1 a6 6.Bf1 d5 7.exd5 Nxd5 8.d4 Nf6 9.c3

If White has to play this, something is wrong. I looked at 9. Be3 Ng4!? 10. Bg5(?) f6, and could not get past the loss of the d-pawn. ECO gives only 9...cxd4 10.Nxd4 Nxd4 11.Bxd4 Be7 12.c4 0-0 13.Nc3 Bd7 14.Qd2 Bc6 15.Rad1 Qb8 16.Re3± Hulak-Kurajica, Yugoslavia 1976.

9...cxd4 10.cxd4 Be7 11.Nc3 0-0 12.Bg5 Nd5 13.Qd2 b6 14.Rad1 Bb7 15.Bxe7 Ncxe7 16.Ne4 Nf5 17.Bd3 Nf6 18.Nxf6+ Qxf6 19.Qf4 Rfd8 20.Bxf5 exf5 21.Ne5 Bd5 22.a3 g5 23.Qg3 h6 24.h4 Rac8 25.Rc1 f4



26.hxg5?? hxg5?? (26...Qxe5 -+)
27.Ng4 Qe6 28.Qh3 Rxc1 29.Rxc1 Kg7 30.Qh5 Qg6 and 0-1

Scilian B50

Doug Huddleston 2083

Mikhail Langer 2268

Texas Action Chp. 2003 (5)

1.e4 c5 2.Nf3 d6 3.c3 Nf6 4.Be2 Nbd7 5.d3 b6 6.0-0 Bb7 7.Re1 g6 8.Bf1 Bg7 9.a4 0-0 10.g3?! c4! 11.Nbd2 cxd3 12.Bxd3 Qc7 13.Bc2 Ng4 14.Nd4 Nge5 15.f4 Nc6 16.N2f3 Nc5 17. b4 Nd7 18.Bb2 Rac8 19.Rc1 a6 20.Bb1 Qb8 21.Qd2 Qa8 22.c4 Nf6 23. Nb3



23...a5 24.bxa5 Nxa5 25.Nxa5 and 0-1

Nimzo-Indian E44

J.P. Hyltin 1956

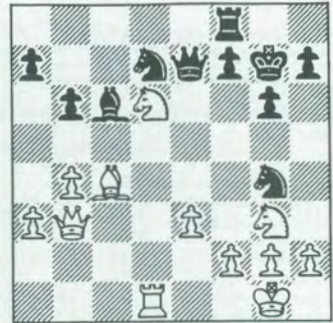
Rosendo Leal 1765

Texas Action Chp. 2003 (5)

1.d4 Nf6 2.c4 e6 3.Nc3 Bb4 4.e3 b6 5.Nge2 Bb7 6.a3 Be7 7.d5 exd5?!

This has no freeing effect – just the opposite, it gives White pressure down the c-file. A better plan is 0-0, d6 and c6.

8.cxd5 d6 9.Ng3 Nbd7 10.Be2 0-0 11.0-0 Re8 12.b4 Bf8 13.Bb2 g6 14.Rc1 Bg7 15.Qb3 Rc8 16.Rfd1 Qe7? (16...a6) 17.Nb5 c5 18.dxc6 Rxc6 19.Rxc6 Bxc6 20.Nxd6 Rf8 21.Bc4 Ng4? 22.Bxg7 Kxg7 23.



23.Ngf5+ gxf5 24.Nxf5+ Kf6 25.Nxe7 Kxe7 26.Qd3 Ba4 27.Qd6+ Ke8 28.Rd4 Ngf6 29.e4 Ng4 30. b5 1-0

Modern Benoni A75

Alex Krol 2040

Steven Castilleja 1484

Texas Action Chp. 2003 (5)

1.d4 e6 2.c4 c5 3.d5 exd5 4.cxd5 d6 5. Nc3 Nf6 6.e4 g6 7.Nf3 Bg4 8.Be2 Bg7 9.0-0 a6 10.a4 Nbd7 11.Nd2 Bxe2 12. Qxe2 0-0 13.Nc4 Qc7?! (13...Nb6 14.Ne3 Qe7) 14.Bf4 Ne8 15.a5 b5 16.axb6 Nxb6 17.Na5 Nf6 18.f3 Nfd7 19.Nc6 Ne5 20.Bxe5 Bxe5 21.Nxe5 dxe5 22.Rxa6 c4 23.Rfa1 Rxa6 24.Rxa6 Ra8 25.Rxa8+ Nxa8 26.g3 Nb6 27. Qe3 Kg7 28.Nb5 Qd8 29.f4 Na4



30.Qa3?? (30.fxe5 Nxb4 31.Qd4) 30...Qb6+ 31.Kg2 Qxb5 32.fxe5 Qxb2+ 33.Qxb2 Nxb2 34.Kf2 Nd3+ 35.Ke3 Kf8 36.d6 Ke8 0-1

Tournament Crosstables

Texas State Championship

Dallas, May 23-26

Texas Action Championship

San Antonio, April 26

name	rating	1	2	3	4	5	total
1 Wellington Rocha	2419	+62	+11	+10	+3	+8	5.0
2 Mikhail Langer	2268	+18	+5	+16	=4	+12	4.5
3 John Paty	2200	+19	+13	+43	-1	+17	4.0
4 Asher Alperovich	2164	+31	+14	+7	=2	=9	4.0
5 John Paul Hyltin	1956	+23	-2	+38	+28	+19	4.0
6 Yuri Mirgorodsky	1774	-9	+34	+41	+39	+15	4.0
7 Steven Castilleja	1484	+45	+62	-4	+16	+29	4.0
8 Selby Anderson	2272	+30	=12	+40	+29	-1	3.5
9 Michael Feinstein	2254	+6	-16	+24	+31	=4	3.5
10 Drew Sarkisian	2151	+20	+17	-1	+21	=13	3.5
11 Mitch Vergara	2107	+36	-1	+25	+20	=14	3.5
12 Doug Huddleston	2083	+32	=8	+27	+26	-2	3.5
13 Paul Haney	1929	+24	-3	+53	+50	=10	3.5
14 William Molina	1907	+63	-4	+34	+43	=11	3.5
15 Joshua Newsham	2063	-21	+63	+33	+22	-6	3.0
16 Alex Echeverry	2032	+22	+9	-2	-7	+35	3.0
17 Andres Hortillosa	1922	+52	-10	+37	+42	-3	3.0
18 Jeff Sneden	1846	-2	+33	-42	+53	+37	3.0
19 Rosendo Leal	1765	-3	+38	+44	+40	-5	3.0
20 Victor A. Flores	1720	-10	+53	+46	-11	+39	3.0
21 Anthony Guerra	1650	+15	-29	+54	-10	+40	3.0
22 Bruce Lewkowski	1611	-16	+42	+57	-15	+43	3.0
23 Clark Potter	1606	-5	+41	-50	+45	+42	3.0
24 G-Su Paek	1517	-13	+44	-9	+41	+46	3.0
25 Albert Marino	1492	-44	+60	-11	+47	+50	3.0
26 Rheanna English	1370	=48	X	+35	-12	=27	3.0
27 Johnny Martinez	1326	+57	=36	-12	+51	=26	3.0
28 Austin Gaddis	915	-38	B	+36	-5	+51	3.0
29 Alex Krol	2040	H	+21	+48	-8	-7	2.5
30 Karl Disher	1872	-8	+37	-39	+38	=33	2.5
31 Vicente Flores	1736	-4	+39	+47	-9	=34	2.5
32 Joaquin Fox	1657	-12	-40	+60	+44	H	2.5
33 Ross Hendrickson	1410	+47	-18	-15	+57	=30	2.5
34 Alonzo Gonzalez	1395	+54	-6	-14	+58	=31	2.5
35 Steven Houchin	1287	+61	+51	-26	+48	-16	2.5
36 Allen Eckert	1704	-11	=27	-28	+61	=48	2.0
37 Sam Gutierrez	1425	+46	-30	-17	+54	-18	2.0
38 Rolando Paredes	1381	+28	-19	-5	-30	+54	2.0
39 Pat Montgomery	1358	+60	+31	+30	-6	-20	2.0
40 Ryan Kuffel	1348	+56	+32	-8	-19	-21	2.0
41 Chris Flores	1263	+49	-23	-6	-24	+58	2.0
42 Andrew Nguyen	1258	+50	=22	+18	-17	-23	2.0
43 Ricky Aguirre	1248	+58	+52	-3	-14	-22	2.0
44 Chandler Jennings	1245	+25	-24	-19	-32	+57	2.0
45 Anthony J. Guerra	1217	-7	-57	+49	-23	+56	2.0
46 Paul Franke	1211	-37	+56	-20	+52	-24	2.0
47 Loreto Guevara	1149	-33	+49	-31	-25	+52	2.0
48 Daniel Schwart	unr.	=26	+61	-29	-35	=36	2.0
49 Roberto Naranjo	unr.	-41	-47	-45	+59	+53	2.0
50 Mark M. Duncan	unr.	-42	+59	+23	-13	-25	2.0
51 Mark Martinez	1020	H	-35	+61	-27	-28	1.5
52 Scott Wendle	1516	-17	-43	+56	-46	-47	1.0
53 T.E. Kolenda	1359	+59	-20	-13	-18	-49	1.0
54 Michael Galvan	1065	-34	+58	-21	-37	-38	1.0
55 Thomas Crosley	844	B	F	U	U	U	1.0
56 Matthew Liu	unr.	-40	+46	-52	+60	-45	1.0
57 Sam Driver	unr.	-27	+45	-22	-33	-44	1.0
58 Ricardo Aguirre	unr.	-43	-54	+59	-34	-41	1.0
59 Jeremy Northam	unr.	-53	-50	-58	-49	=60	0.5
60 Cavanaugh Garza	unr.	-39	-25	-32	-56	=59	0.5
61 Ben Condy	unr.	=35	-48	-51	-36	U	0.5
62 James R. Shaw	1900	-1	-7	U	U	U	0.0
63 Gerald Castleberry	1500	-14	-15	U	U	U	0.0

name	rating	1	2	3	4	5	6	7	total
1 B. Annakov	2527	+7	+22	+31	+13	=2	=3	=4	5.5
2 Mark Diesen	2467	+26	=17	+19	+9	=1	+8	=3	5.5
3 John W. Cole	2262	=27	+14	+17	+5	=4	=1	=2	5.0
4 Selby Anderson	2275	=20	+33	+10	+25	=3	+6	=1	5.0
5 Sonny Kamberi	2343	+18	=9	+6	-3	=14	=15	+10	4.5
6 Mikhail Langer	2267	=34	+11	=5	+29	+16	-4	+19	4.5
7 James Rohrbaugh	2237	-1	+28	+30	=10	=13	=14	+18	4.5
8 Andrew Whatley	2340	-25	+27	+26	H	+21	-2	+15	4.5
9 Keith Hayward	2281	+29	=5	+21	-2	=10	=19	=11	4.0
10 Ali Morshedi	2156	=23	+24	=4	=7	=9	+13	=5	4.0
11 Drew Sarkisian	2151	=13	-6	+33	-14	+23	+24	=9	4.0
12 Albert Yeh	2042	H	H	+16	U	U	+26	+21	4.0
13 Wellington Rocha	2469	=11	+34	+15	-1	=7	=10	=16	3.5
14 Jeffrey Ashton	2215	=31	-3	+27	+11	=5	=7	U	3.5
15 N. Schoonmaker	2211	H	+20	-13	=19	+17	=5	=8	3.5
16 Joshua Newsham	2063	=24	+32	-12	+22	-6	=21	=13	3.5
17 Kevin Fleming	2050	B	=2	-3	+32	-15	-22	+28	3.5
18 Rudy G. Tia	2116	=5	=29	-24	+27	+20	+25	-7	3.5
19 Andres Suarez	2071	H	+30	-2	=15	+26	=9	=6	3.5
20 Gheorghe Secheli	2084	=4	-15	-32	+33	-18	+28	+24	3.5
21 Mark Dejmeck	2185	=33	+23	=9	+24	-8	=16	-12	3.0
22 Federico Garcia	2264	+28	-1	-25	=16	+30	+17	U	3.0
23 Barry Endsley	2032	=10	-21	-29	+28	-11	+27	H	3.0
24 Peter Yeh	2018	=16	-10	+18	-21	+29	-11	-20	2.5
25 Larry Moss	2200	+8	-31	+22	-4	H	-18	U	2.5
26 Clarence Yeung	2206	-2	B	=8	+30	-19	-12	U	2.0
27 David Noden	2000	=3	-8	-14	-18	H	-23	H	1.5
28 Kent Gordon	2048	-22	-7	H	-23	+33	-20	-17	1.5
29 Alex Chua	2106	=9	=18	+23	-6	-24	U	U	1.5
30 Chris Land	2220	H	-19	-7	-26	-22	=33	H	1.5
31 Marcin Kaminski	2474	=14	+25	-1	U	U	U	U	1.5
32 John Paty	2200	H	-16	+20	-17	U	U	U	1.5
33 George Trammell	2033	=21	-4	-11	-20	-28	=30	U	1.0
34 Robert Epstein	2072	=6	=13	U	U	U	U	U	0.5

Texas Amateur Championship

Dallas, May 23-26

name	rating	1	2	3	4	5	6	7	total	
1 Mark A. Dixon	1900	+82	=30	+125	+11	=8	+12	+9	6.0	
2 Joseph Drake	1893	+118	+41	=34	+105	=21	+29	+7	6.0	
3 Jason Howell	1956	+76	=57	=60	+39	+30	+31	+4	6.0	
4 Frank Brack	1939	+37	+127	+32	+89	+9	=7	-3	5.5	
5 Ming T. Chin	1717	+106	=8	=80	+24	=17	+33	+21	5.5	
6 Vicente A. Flores	1740	+94	=96	+90	+84	+35	+10	H	5.5	
7 Tres Roring	1912	+42	=25	+43	+14	+29	=4	-2	5.0	
8 Trevor Jackson	1874	+100	=5	+40	+61	=1	=9	+38	5.0	
9 David W. Phillips	1997	+134	+92	+103	+33	=4	=8	-1	5.0	
10 Paul Haney	1928	+69	-31	+52	+48	+41	=6	+44	5.0	
11 Jonathan Allen	1840	+93	=40	+36	-1	+76	+58	=16	5.0	
12 Nate Findley	1857	+83	=121	=57	+32	+25	-1	+31	5.0	
13 Stephen Parnatmat	1857	+81	+91	=35	-30	=37	+32	+54	5.0	
14 Daniel A. Nelson	1846	+98	=63	+121	-7	+26	=44	+42	5.0	
15 Torey Neuzil r/e	1664	+135	+115	-19	+103	=31	+59	+29	5.0	
16 Robert W. Clark	1974	H	=48	+95	+63	+49	+57	=11	5.0	
17 Bail Maier	1887	X	+22	H	=34	=5	+51	=18	5.0	
18 Rodney Thomas	1834	+73	-32	+78	+42	H	+30	=17	5.0	
19 Richard Petty	1994	H	+108	+15	-29	+92	=21	+22	5.0	
20 Julie Ann O'Neil	1674	H	-78	+97	+64	=80	=86	+35	5.0	
21 Michael Jennings	1848	+24	+43	+62	+49	=2	=19	=5	4.5	
22 Gene Pershwitz	1708	+59	-17	+98	=96	+23	+34	-19	4.5	
23 Michael Simpson	1986	=36	+45	=29	+121	=22	+104	+60	4.5	
24 Michael Cathey	1522	-21	+114	+66	-5	+95	=36	+74	4.5	
25 Victor A. Flores	1720	+109	=7	=84	+70	=12	+56	H	4.5	
26 Allan Davidson	1621	H	+132	-30	+123	-14	+92	+58	4.5	
27 Gary Blanchard	1798	+71	+47	-33	H	=56	H	+62	4.5	
28 Todd M. Douglas	1701	H	=60X	+116	=83	+97	+84	X	65	4.5
29 Thomas McCaslin	1765	+102	+117	+23	+19	-7	-2	-15	4.0	
30 Gilbert Davila	1729	+111	=1	+26	+13	=3	-18	H	4.0	
31 Kevin Wang	1765	+88	+10	H	=35	+15	-3	-12	4.0	

32	Robert Haskell	1636	+124	+18	-4	-12	+45	-13	+70	4.0
33	Aurelio Gonzalez	1915	+50	+66	+27	-9	=38	-5	=36	4.0
34	Jeffrey Sneden	1825	+46	+130	=2	=17	=51	=22	=37	4.0
35	Bradley Sawyer	1861	+65	+77	+13	=31	-6	+62	=20	4.0
36	R.J. Tagorda	1670	=23	+97	-11	=52	+73	=24	=33	4.0
37	Daniel DeVault	1659	-4	+94	+12	=55	=13	=61	=34	4.0
38	Yuri Mirgorodsky	1742	+136	=80	=48	+73	=33	=55	=8	4.0
39	Brandon Ware	1682	+117	+102	+45	-3	=59	=76	+73	4.0
40	Timothy Banks	1681	+110	=11	=8	=85	=47	=46	=87	4.0
41	Jeff Wilder	1749	+70	-2	+118	+47	-10	=69	U	4.0
42	Leon Powers	1612	-7	+131	+128	-18	+71	+89	=14	4.0
43	Michael Slepoy	1704	+101	=21	-7	=56	+78	+83	=50	4.0
44	Francisco Tort	1763	=97	-84	+79	+67	+83	=14	=10	4.0
45	Jacob Slepoy	1406	+68	-23	-39	+110	-32	+100	=82	4.0
46	Doyle Lobaugh r/e	1400	-34	+122	-58	+74	=50	=40	+75	4.0
47	Adrian Diaz	1503	+74	-27	+127	=41	=40	+77	H	4.0
48	Misel Neskovic	1654	=132	+16	=38	-10	H	+126	=51	4.0
49	Carmen Chairez	1708	+113	+129	H	-21	-16	=82	=86	4.0
50	John H. Williams	1628	-33	+119	-71	+99	=46	+72	=43	4.0
51	Rosendo Leal	1714	+114	-103	+93X117	=34	-17	=48	4.0	
52	Joshua Spare	1334	+58	=61	-10	=36	H	H	+69	4.0
53	T.E. Kolenda	1374	-57	-76	+126	+127	-69	+90	+81	4.0
54	Lloyd Uhler	1660	-80	=79	H	+108	+93	+70	=13	4.0
55	Robert Chalker	1906	-56	+99	+69	+37	B	=38	U	4.0
56	Fergal McArdle	1584	+55	=105	-61	+43	=27	-25	=59	3.5
57	Mark Gracey	1798	+53	=3	=12	+86	=58	-16	U	3.5
58	Peter H. Tu	1714	-52	+107	+46	+71	=57	-11	=26	3.5
59	Tom George	1329	-22	=65	+81	+77	=39	-15	=56	3.5
60	William Fink	1689	=99	+28	=3	=80	H	=65	=23	3.5
61	William P. Gibson	1800	+72	=52	+56	-8	=65	=37	U	3.5
62	Robert H. Sanders	1689	+95	H	-21	+78	+96	=35	=27	3.5
63	R. Roseborough	1600	+126	=14	-105	-16	+120	-68	+94	3.5
64	Joe Alexander	1455	-89	+68	H	-20	-77	+108	+104	3.5
65	Steven W. Horn	1543	-35	=59	+88X125	=61	=60	F28	3.5	
66	Percy Galimberti	1739	+119	-33	-24	-72	H	+98	+93	3.5
67	Tim Henderson	1588	-103	+109	H	-44	-68	+123	+102	3.5
68	Jonathan Harris	1749	-45	=64	H	+79	+67	+63	U	3.5
69	Satya Modugula	1585	-10	+72	-55	+116	+53	-41	=52	3.0
70	Steven Watson	1350	-41	+75	+91	-25	+100	-54	=32	3.0
71	Raymond Hung	1462	-27	+74	+50	-58	-42	-75	+111	3.0
72	Carter Forbea	1377	-61	=69	+75	+66	=84	-50	=83	3.0
73	John F. Palmer	1476	-18	+124	+104	-38	-36	+95	=39	3.0
74	John Dotson	1845	-47	-71	+101	-46	+124	+85	=24	3.0
75	Stephanie Ballom	1598	-115	-70	-72	+101	+88	+71	=46	3.0
76	Greg Wilder	1598	-3	+53	+108	=92	-11	=39	U	3.0
77	William R. Martz	1651	+120	-35	=123	-59	+64	-47	=78	3.0
78	Gayatri Vempati	1461	H	+20	-18	=62	-43	+119	=77	3.0
79	Sam Gutierrez	1416	-92	=54	-44	-68	=101	+109	+106	3.0
80	T. Cunningham	1949	+54	=38	=5	=60	=20	U	U	3.0
81	Todd Appelbaum	1542	-13	+120	-59	=88	+99	+107	=53	3.0
82	Robert Smeltzer	1600	-1	+111	-117	H	+123	=49	=45	3.0
83	Justin Polk	1536	-12	+133	H	+28	-44	-43	=72	3.0
84	Frank M. Roberts	1555	H	+44	=25	=6	=72	=28	H	3.0
85	Amita Vempati	1475	H	-125	+113	=40	-91	-74	+116	3.0
86	K. Ramachandran	1534	H	+115	-57	+106	=20	=49	3.0	
87	Ankit Chandola	1509	-129	-95	-111	+131	+109	+106	=40	3.0
88	Taylor Martin	1352	-31	H	=65	=81	-75	+114	+112	3.0
89	Kenneth Artz	1766	+64	+112	+96	=4	U	=42	U	3.0
90	Ramon Tagorda	1526	H	H	-6	-106	+116	-53	+107	3.0
91	David Pawlowski	1641	W	-13	-70	+119	+85	U	U	3.0
92	George Culler	1750	+79	-9	+100	=76	-19	=26	U	2.5
93	Paul Chua	1490	-11	+110	-51	+128	-54	=94	=66	2.5
94	Angel Bohannon	1381	-6	-37	-106	+133	+110	=93	=62	2.5
95	Julio Hernandez	1019	-62	+87	-16	+112	-24	-73	H	2.5
96	Joe Dean Veal	1957	+137	+6	=89	=22	=62	U	U	2.5
97	Sigifredo Franco	1426	=44	-36	-20	+113	-28	+122	U	2.5
98	Check Newton	1412	-14	+126	-22	=124	-104	=66	+120	2.5
99	John Knoepfel	1306	=60	=55	H	-50	-81	=101	+122	2.5
100	James Pemberton	1549	-8	+106	-92	+109	-70	=45	H	2.5
101	Tejus Pradeep	1037	-43	H	-74	-75	=79	+99	+119	2.5
102	Robert Abbott	1447	-29	-39	-109	H	+113	+120	=67	2.5
103	Ronnie Rubit	1891	+67	+51	-9	-15	H	U	U	2.5
104	Courtney Jamison	1626	H	H	-73	+120	+98	-23	=64	2.5
105	Odell Hall	1811	+107	=56	+63	-2	U	U	U	2.5
106	David Campbell	1193	-5	-100	+94	+90	-86	-87	=79	2.0
107	Jason Jla	1387	-105	-58	+133	-115	+128	-81	=90	2.0
108	Chad Miculek	1312	X	-19	-76	-54	=112	=64	=113	2.0
109	Frank Lawrence	1201	-25	-67	+102	-100	-87	-79	B	2.0
110	Fred W. Scott	unr.	-40	-93	+131	-45	-94	-116	+128	2.0
111	Tommy Warnick	1241	-30	-82	+97	-118	H	=112	=71	2.0
112	William Bralick	1475	X	-89	-37	-95	=108	=111	=88	2.0
113	Reynaldo Huerta	1119	-49	H	-85	-97	-102	+128	=108	2.0

114	Thomas Crane	1164	-51	-24	-119	H	H	-88	+126	2.0
115	Frank Arizpe	1887	+75	-15	-86	+107	U	U	U	2.0
116	Jasmine DiLucci	1264	H	H	F28	-69	-90	+110	=85	2.0
117	Balasubramanian	unr.	+39	-29	+82	F51	U	U	U	2.0
118	Alan Lin Chen	1578	-2	B	-41	+111	U	U	U	2.0
119	David Dickson	1368	-66	-50	+114	-91	=122	-78	-101	1.5
120	Criff Stevens	1270	-77	=81	H	=104	-63	-102	=98	1.5
121	Robert Ladymon	1620	+133	=12	-14	-23	U	U	U	1.5
122	Winston Thompson	954	-130	-46	H	H	=119	-97	=99	1.5
123	Ade Kujimiyo	1400	H	H	=77	-26	-82	-67	U	1.5
124	K. Parkhomenko	934	-32	-73	B	=98	-74	U	U	1.5
125	Clayton Swarfford	1698	H	+85	-1	F65	U	U	U	1.5
126	Zohra Chahal	991	-63	-98	-53	H	H	-48	=114	1.0
127	Julius Cromartie	1738	+131	-4	-47	-53	U	U	U	1.0
128	Theodore Jamison	1029	H	H	-42	-93	-107	-113	=110	1.0
129	Donald Coburn	1847	+87	+49	U	U	U	U	U	1.0
130	Terry Stuard	1598	+122	-34	U	U	U	U	U	1.0
131	John Scott Hill	1294	-127	-42	-110	-87	H	U	U	0.5
132	Scott Griggs	1930	=48	-26	U	U	U	U	U	0.5
133	Thomas Madis	1115	-121	-83	-107	-94	U	U	U	0.0
134	Benjamin Wheeler	1790	U	U	U	U	U	U	U	0.0
135	Harold Williams	1275	U	U	U	U	U	U	U	0.0
136	Doyle Lobaugh	1400	-38	U	U	U	U	U	U	0.0
137	Torey Neuzil	1664	-96	U	U	U	U	U	U	0.0

B=bye H=1/2 pt. bye U=unplayed X=forfeit win F=forfeit loss
Z=zero pt. bye *=house player r/e = re-entered

Statement by George C. John

The TCA Bylaws grant important powers to the President; therefore, the choice of President is important. Please vote for the candidate who you think has the best combination of experience, maturity, leadership skills, and commitment to the promotion and support of the TCA and Texas chess.

The TCA is a strong, successful organization. I will provide the necessary leadership to continue what has been working well. I will build upon our strengths by actively identifying and implementing new and effective ways to further Texas chess. One interesting idea is for the TCA to take a more active role in some of our more successful and profitable tournaments. If we can increase our financial reserves, we will have more options how we can best support and promote chess in Texas.

I have served the TCA and Texas chess in many roles. I have been your TCA Region Five Director, Treasurer, Secretary, Webmaster, and Scholastic Committee member and Chair. I am a USCF Senior Tournament Director, having helped direct many scholastic and non-scholastic events in Texas including many State and National championship events. I am one of nine elected USCF Texas Delegates, and have been a Texas Delegate at the five most recent USCF Board of Delegates meetings. I have been actively involved in Texas scholastics and non-scholastics at the state level since 1996, and enjoy excellent relations with many of the organizers and volunteers in Texas.

One of the TCA President's most important roles is the selection of the TCA Scholastic Committee members. I have been proud to serve as a committee member

and this year as its chair. I will work hard to recruit committee members who will bring excellence, energy, fairness, and impartiality to their work. Arguably, their most important function is to examine bids and award events for our major scholastic events. We want to make certain that their decisions will remain absolutely impartial and fair, and that they will continue to award events to those organizers who have clearly demonstrated the ability to give our students the tournaments they so richly deserve.

I would like to take a moment to thank Selby Anderson for his many years of service to the TCA as the Editor of *Texas Knights*. Selby has done an outstanding job, and will be missed. I also wish to welcome Mario Leal as the new Editor of *Texas Knights*. Mario and I enjoy an outstanding working relationship, and I very much look forward to working with him in his new role. I think we can expect some exciting changes ahead for *Texas Knights*, and for the TCA Website, too.

Thank you for reading my statement. If you have any questions or comments, please contact me at george@neosoft.com.

George C. John
<http://www.georgejohn.com>

Solution: 1.Nc4: 1...Kxd7 2.b8(N)#; 1...Rb8 2.bxa8(N)#; 1...Bxc4 2.b8(Q)#.



USA Chess, Inc.

USA Chess, Inc. is the largest and premier chess camp organizer for children in the United States. Our staff, headed by nationally renowned children's chess coach National Master Nowredine Ziane, is comprised of the best children's chess instructors in North America!

WE OFFER:

Private and Group lessons
 School Coaching
 Equipment Sales

USA Chess, Inc.
 13500 Midway Road, Suite 400, Dallas, TX 75244
www.chesscamp.com Ph. 214.495.8445

Chess in Shakespeare

compiled by Bill Wall

And I have horse will follow where the game makes way.

Titus Andronicus, Act 2, Scene 2

The rascal hath removed my horse.

Henry IV (Part I) Act 2, Scene 2

Have I not pawn'd to you my majesty?

King John, Act 3, Scene 1

My life I never held but as a pawn to wage against thine enemies.

King Lear, Act 1, Scene 1

The bishop will be overborne by thee.

Henry VI (Part I) Act 5, Scene 1

What says my bully rook?

The Merry Wives of Windsor, Act 1, Scene 3

What is this castle call'd that stands hard by?

Henry V, Act 4, Scene 7

That thou mayst be a queen, and check the world!

King John, Act 2, Scene 1

Come hither, come! Come, come, and take a queen.

Antony and Cleopatra, Act 5, Scene 2

The skipping king, he ambled up and down.

Henry IV (Part I), Act 3, Scene 2.

I'll move the king.

Cymbeline, Act 1, Scene 5

Why, then, we'll make exchange; here, take you this.

The Two Gentlemen of Verona, Act 2, Scene 2

We'll draw.

Romeo and Juliet, Act 1, Scene 1

No mates for you.

The Taming of the Shrew, Act 1, Scene 1

What two bishops were those that went on each side of the queen?

Henry VIII, Act 4, Scene 1

To do this deed, promotion follows.

The Winter's Tale, Act 1, Scene 2.

I would allow him odds.

Richard II, Act 1, Scene 1

And check was the reward of valor.

Henry IV (Part II), Act 4, Scene 3

69th SOUTHWEST OPEN

AUG. 29 – SEPT. 1 or AUG. 30-SEPT. 1

7-Rd. Swiss: 40/2, 20/1, SD/30 • Rds. 1-3 of 3-day: G/120

Marriott West Loop
1750 South Loop West
Houston, TX 77054

Rates: \$74/75/75/75. Reserve by 8/8. Call 1-800-613-3982, ask for SW Open rates.

\$5,000 b/175 full entries. Two sections & scholastic event

Open Section (open to all)

Expert

First: \$800 \$600
Second: \$500 \$300
Third: \$200

Reserve Section (open to U2000)

B C D/under Unr.

\$600 \$400 \$400 \$400 \$200
\$300 \$100 \$100 \$100

Both: TCA membership required. OSA.

Entry Fees: \$42 if received by 8/25, \$52 at site. \$26 Junior/Senior/full time College/
Handicap if received by 8/25, \$30 at site (counts as 1/2 toward based-on).

4-day: Reg Friday 5/23, 6:15pm-7:10. Rd 1 at 7:35. Rds Fri: 7:35, Sat:1:30-7:30,
Sun:11:15-5:30, Mon:8:45-3.

3-day: Reg Sat 5/24 8-8:30 am, Rds at 9, 1:30, 7:30 then merge with 4-day.

Foreign Unrated must play in Open section.

Up to two 1/2 pt byes avail. if req before rd 2, but byes for both rd 6 AND 7 not permitted.

TCA membership meeting Sunday 8/31 at 8:30 am.

K-12 Scholastic Saturday, 8/30. 5-SS, G/45

EF: \$17 by 11/25, \$22 at site does not count toward based on.

Registration 8:15-8:45 am, Rounds 9:15 -11- 2:15 -4- 5:45.

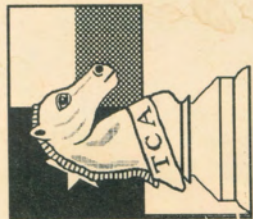
Prizes: Trophies to Top 10 individuals, top Under 1000, top Under 800, top Under 600,
top Under 400, top 3 unrated and top 3 teams.

Ent: Dallas Chess Club, 11836 Judd Ct, #304B, Dallas, TX 75243.

Info: S. Breeding, 972.208.1802, SusanBreeding@hotmail.com

<http://www.dallaschess.com>

NS. NC. W. FIDE



Texas Chess Association

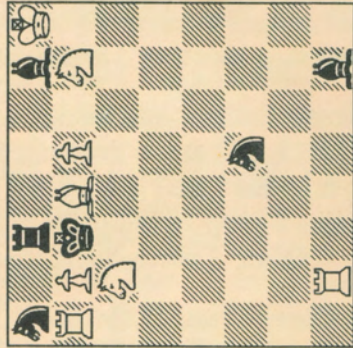
P.O. Box 501

Helotes, TX 78023-0501

Non-Profit Org.
U.S. Postage
PAID
San Antonio, TX
Permit No. 445

See inside front cover for
TCA membership information.

Jeremy Morse, ENG
StrateGems, Jan.-Mar. 2003



Mate in two
Solution: page 26

Tommy Groombridge 31-May-04
P.O. Box 30233
Stockton, CA 95213-0233