

TEXAS KNIGHTS

The Official Publication of the Texas Chess Association

\$2

Volume 45, Number 3

P.O. Box 5768 Waco, Texas 76708

January-February 2004

2003 TEXAS CLASS CHAMPIONSHIP



Michael Slepoy
U1800 with 4.5



Joseph R. Drake
U2000 with 4.5



L-R Matthew Liu, Russell E.
Wiley, William H. Riley
Tie for U1200 with 4.0



IM Magesh Panchanathan
1st in Open Section with 4.5



L-R Todd A. Applebaum,
James David Hord
U1600 with 4.0



L-R Alan P. Glenton, Tyler Mow-
Unland, Tim D. Shipper
Tied for U1400 with 4.0



Reece Cherry
U1000 with 3.0

Texas Class Championship	p. 3
Two from Magesh	p. 11
Letters to Editor	p. 12
Jim Gallagher Memorial	p. 13
Tarrant County Championship	p. 17
Crosstables	p. 20

President: George C. John, POB 710750 Houston, TX 77271-0750, george@neosoft.com. **Vice-President:** Clemente Rendon, CRendon44@hotmail.com, (972) 744-9290. **Secretary:** Lorraine Widener, POB 4988, Brownsville, TX 78523-4988, (956) 541-9669, lorraine@manisys.com. **Treasurer:** Nancy Sawyer, nancy_sawyer@sbcglobal.net, (281) 370-6529. **Editor:** Mario Leal, POB 5768, Waco, TX 76708-0768; (254) 753-5145; mleal@hotmail.com. **Games Editor:** Drew Sarkisian, drew@sarkisian.org **Webmaster:** George C. John, george@neosoft.com. **Tournament Clearinghouse:** Forrest Marler, 2109 Ave. T, Huntsville, TX 77340-4930; (936) 291-7625; finarler@cox-internet.com. **Texas Chess Association, Inc.**, is a 501(c)(3) educational nonprofit corporation dedicated to promoting chess in Texas. **Regular Membership:** \$10/yr. **Junior** (18 or under) and **Student** (with ID) **Memberships:** \$7.50. **Foreign Membership:** \$12.50 (Canada & Mexico), other foreign \$17.50. **Patron Membership:** \$25 (first class mailing of *Texas Knights* plus listing in Hall of Honor.) **Family Membership:** \$15. **Membership without *Texas Knights*:** \$5. **Club Membership:** \$25 (\$10 schools, \$40 foreign), includes one 1/4 page ad per year. Send to **George C. John, POB 710750 Houston, TX 77271-0750**. Give name, address, city, state and zip code; also phone and e-mail (optional).

TCA Hall of Honor

Angela Alston 1204
 Selby K. Anderson 9999
 Aldrin Arandela 1203
 Lynne Babcock 1004
 Howard C. Berger 0304
 Joseph Bradford 0604
 Clarence Callaway, Jr. 9999
 John T. Campbell 1004
 Mike Carpenter 0404
 Christopher Chapin 1104
 George W. Church, Jr. 9999
 William D. Collin 1104
 Thomas L. Cunningham 0404
 Dr. Raymond D. Duque 0604
 Kristy Eng 0304
 Aaron Golden 0804
 Scott Griggs 0404

James M. Hollingsworth 0804
 J. P. Hyltin 1104
 Toshio Imai 0204
 Bob James 0904
 George C. John 0604
 John Kolts 0804
 Mikhail Langer 0804
 Mike Larimer 1104
 Rosendo Leal 0504
 Patrick C. Long 9999
 Mark E. McCue 1104
 Joshua Newsham 0204
 Robert B. Potter 9999
 Tim Redman 0704
 Doug & Alexey Root 1104
 Luis Salinas 0605
 Drew Sarkisian 0504

Thomas J. Scarlatella 0804
 Gary M. Simms 0804
 Michael Simpson 0804
 John Sneed 0304
 Duane E. Solley 1204
 Clifford A. Stevens, Jr. 0504
 Don Sutherland 0504
 Rodney J. Thomas 0504
 Louis Thurston 9999
 USA Chess, Inc. 0904
 Paul Weatherall 0602
 Lee Williams 0504
 David Williamson 0504
 Greg Wren 0904
 Thomas L. Yantis 0504
 Ziane Chess Academy 1103
 (Note: Contributions beyond membership fees are tax deductible.)

Contributors this issue: NM Selby Anderson, Brad Bradford, Tom Kusnierz, Windy Leal, IM Magesh Panchanathan, Luis Salinas, Michael Simpson.

Send submissions (paper or disk) with your phone number to P.O. Box 5768, Waco, TX 76708-0768; or e-mail to mleal@hotmail.com. Deadline next issue: Feb. 15. PGN files are preferred. Please mail a printout for ChessBase formatted submissions.

All contents of *Texas Knights* © 2004 by the Texas Chess Association, Inc. No part may be reproduced in any way without the express consent of the editor. Advertising rates: \$50/page, \$35/half, \$20/quarter, \$1/line (two column format).

2003 Texas Class Championship

Over 125 players competed in seven sections at the Texas Class Championships held November 14th - 16th in Dallas. The 22-player Championship section was won by IM Magesh Panchanathan who scored 4.5 out of 5.

The U2000 section was won by Joseph Drake who scored 4.5 of 5. Michael Slepoy came out on top of the U1800 section with 4.5 of 5 while two tied for first in the U1600 section each with 4 of 5: Todd Appelbaum and David Hord. There was a three way tie in the U1400 section that included Tim Shipper, Tyler Mow-Unland, and Alan Glenton each with 4 of 5 points.

Russell Wylie, William Riley, and Matthew Liu tied with 4 or 5 in the U1200 section. James Ong won the unrated section scoring 4 of 5 points.

Joe Bradford directed for Southwest Chess Enterprises.

Notes by NM Drew Sarkisian

French Tarrasch C08

Michal Kujovic 2225

Marcin Kaminski 2465

2003 Texas Class Chp. (1)

1.e4 e6 2.d4 d5 3.Nd2 c5 4.Ngf3 Nf6 5.exd5 exd5 6.Bb5+ Bd7 7.Bxd7+ Nxd7 8.0-0 Be7 9.dxc5 Nxc5 10.Nb3 Nce4 11.Nbd4 0-0

11...Qc8 12.c3 0-0 13.Be3 Re8 14.Nc2 Bd6 15.Bd4 Qc6 16.Ne3 Rad8 17.Re1 Bb8 18.Qc2 Nh5 19.g3 Qg6 20.Nh4 Qg5 21.Nf3 Qg6 22.Nh4 Qg5 23.Nf3 Qg6 1/2-1/2 Ye Jiangchuan-Gurevich, M Belfort 1999.

12.Nf5 Bc5 13.Be3 Re8 14.c3N Qb6 15.Bxc5 Nxc5 16.Qc2 Nce4 17.Rad1 g6 18.N5d4 a6 19.Qb3 Qc7 20.Nc2 Nc5 21.Qa3 Re4 22.Rd4 Ne6 23.Rd2 Nc5 24.Nb4 Rd8 25.Rfd1 Qe7



26.h3

The d-pawn is untouchable due to White's weak back rank: 26.Nxd5?? Rxd5 27.Rxd5 Nxd5 28.Rxd5 Re1+ 26...Re2

Black wants to mix it up so he sacrifices his isolani. 26...Qd6!? 27.Nxd5 Nxd5 28.Rxd5 Qxd5 29.Rxd5 Rxd5 30.Nd4 may be level.

27.Nxd5 Rxd5 28.Rxd5 Nxd5 29.Rxd5 b6

In for a penny, in for a pound. Black is not going to submit himself to 29...Nd7 30.Qxe7 Rxe7 31.c4.

30.Qb4?

Greed is good here: 30.b4 Ne4 31.Qxa6 Nxf2 32.Qxb6 Qe4 33.Qd4! and White simultaneously defends against 33...Qb1+ and threatens 34.Rd8 mate.

30...Qf6 31.a4 a5 32.Qb5 Rc2 33.Rd4

Not 33.Rd2?? Rc1+ 34.Kh2 Qf4+ 35.g3 Qxf3-+; White could defend his first rank with 33.Rd1. Black now generates irritating counterplay.

33...Rc1+ 34.Kh2 Rc2 35.Kg3

35.b4 Ne6 36.Qxb6 Rxf2 37.Rd8+ Qxd8 38.Qxf2 axb4 39.cxb4 Qd6+ is level.

35...Qe6 36.b4 Ne4+?

Black had a unique chance to tie White up with 36...Rxc3 37.Kh2 Rb3. 37.Kh2 Rxf2 38.Qd3! Nf6 39.Rd6 Qe7 40.Qd4?!

White can retain some winning chances with his outside passed a-pawn after 40.Rxb6 Ra2 41.bxa5 Rxa4 42.Qd6 Qxd6+ 43.Rxd6 Ne4 44.Rd4 Nxc3 45.Rxa4 Nxa4 46.a6 Kf8 47.a7 Nb6.

40...Qe2 41.Nh4 Qf1

The ugly self-pin 41...Kg7 avoids checks on the back rank.

42.Qxb6 g5?? 43.Qc5! gxh4

Ending the game immediately, but 43...Ne8 44.Rd8 Qe2 45.Qxg5+ Kf8 46.Qc5+ Qe7 47.Rxe8+ Kxe8 48.Qxf2 axb4 49.cxb4 Qxb4+- holds no hope for Black, nor does; 43...h6 44.Rd8+ Kh7 45.Qf8 Rxg2+ 46.Nxg2 look any better.

44.Rd8+ Kg7

Or 44...Ne8 45.Rxe8+ Kg7 46.Qg5# 45.Qg5# 1-0

Notes by NM Drew Sarkisian

Ruy Lopez C99

Mark Dejmek 2154

Magesh Panchanathan 2467

2003 Texas Class Chp. (1)

1.e4 e5 2.Nf3 Nc6 3.Bb5 a6 4.Ba4 Nf6 5.0-0 Be7 6.Re1 b5 7.Bb3 d6 8.c3 0-0 9.h3 Na5 10.Bc2 c5 11.d4 Qc7

The Chigorin Defense to the Ruy Lopez. While not as sharp as some other options at Black's disposal, this venerable old beast is still trotted out occasionally by such strong GMs as Nikolic, Sokolov, Timoschenko and Acs.

12.Nbd2 exd4 13.exd4 Bb7 14.d5
Rac8 15.Bd3 Nd7 16.Nf1 f5



17.Ng3

White can give up the center for kingside attacking chances with 17.exf5 Bxd5 18.Ng5 Bxg5 19.Bxg5 Ba8 20.Qg4 Nf6 21.Qg3 Kh8 as in Horvath-Karolyi, Noviki, Budapest 1988.

17...f4 18.Nf1 Nc5 19.Be2

Taking the time to preserve this bishop allows Black to get the Na5 back into the game. The immediate 19.b3 may be better.

19...Nc4 20.b3 Nb6 21.Bd2 Nca4 22.Rc1 Nc3 23.Bxc3 Qxc3 24.Qd2 Qb2 25.Bb1 Qa3 26.Red1 Nd7 27.Ne1 Nc5 28.Nc2 Qb2 29.Nb4 Qxd2 30.Nxd2 Bd8 31.Nd3 Nxd3 32.Bxd3 Ba5 33.Nf3 Bc3 34.a4 b4 35.Bc4

A less provocative way of playing this position might be 35.Ng5 Bb2 36.Rc4=. As played, Black is goaded into playing an attractive-looking Exchange sacrifice.

35...Rc5 36.Ng5 Rxc4!? 37.bxc4 Rc8 38.f3?

White could have made Black pay for his optimism with this series of knight retreats: 38.Nf3 Rxc4 39.Nd2 Rd4 40.Nb1! Bc8 (40...Rxd1+ 41.Rxd1 Bd4 42.a5!+-) 41.Nxc3 bxc3 42.Re1 Rc4 43.Rc2 Bd7 44.Rec1 Bxa4 (44...Rxe4 45.Rxc3 Rxa4 46.Rc6! has got to be very good for White) 45.Rxc3 Rxc3 46.Rxc3 and only White has serious winning chances.

38...Rxc4

The difference is now clear; with the knight out of play, he has no way to dislodge any of the Black pieces from the Queenside. All Black has to do is pick off the a-pawn and the game is over.

39.Kh2 a5 40.g3 fxg3+ 41.Kxg3 Bc8 42.Rd3 42...Ne6 42...Bd7+ 43.Ne6 Rc8 44.f4 exf4+ 45.Nxf4 Bxa4 46.Ne2 Be5+ 47.Kg2 Rxc1 48.Nxc1 Bc2

0-1

Queen's Indian E1

Lester Van Meter 2213

Mbugua Githoro 1982

2003 Texas Class Chp. (1)

1.d4 e6 2.Nf3 Nf6 3.c4 b6 4.Bf4 Ba6 5.e3 Bb4+ 6.Nfd2 0-0 7.Bd3 d5 8.0-0 e5 9.Qa4 dxc4 10.Bxc4 Bxc4 11.Nxc4 Qd5 12.Rc1 Nc6



13.a3 exd4 14.axb4 g5 15.Nd6 Ne7 16.Bg3 h5 17.Qb5 h4 18.Be5 Rac8

1-0

Notes by NM Drew Sarkisian

Bird A03

Keith Hayward 2283

Alex Echeverry 2019

2003 Texas Class Chp. (2)

1.f4 d5 2.Nf3 Nf6 3.e3 g6 4.Be2 Bg7 5.0-0 0-0 6.d3 Nc6 7.c3 Re8 8.d4 Bf5 9.Bd2 Ne4 10.Be1 Nd6 11.Nbd2 b5

12.b3 Na5 13.h3



13...c5 14.dxc5 Bxc3 15.cxd6 exd6 16.Bf2 a6 17.Nd4 Bxa1 18.Qxa1 Bd7 19.Bf3 Be6 20.g4 Qd7 21.Bg2 Nc6 22.e4 f5 23.Nxe6 Qxe6 24.exd5 Qe2 25.dxc6 Qxd2 26.Rd1

with the threat of 27.Bd5+.

1-0

Notes by NM Drew Sarkisian

Sicilian B43

John Cole 2290

Alexander Chua 2093

2003 Texas Class Chp. (2)

1.e4 c5 2.Nf3 e6 3.d4 cxd4 4.Nxd4 a6 5.Nc3 Qc7 6.Bd3 Nf6 7.Be3 b5 8.Qe2 Bb7 9.0-0!?

An interesting, if unpopular, pawn sac. 9.f3 is normal here.

9...b4

Black picks up the gauntlet. Completing development with 9...Be7 was also viable.

10.Na4

The b6 square presents a juicy target.

10...Nxe4

Better might be 10...Bxe4!?

11.Bxe4 Nxe4.

11.Nb3 Qc6 12.Bxe4 Qxe4 13.f3 Qc6 14.Nb6 a5 15.c4

There's nothing wrong with 15.Nxa8 Ba6 16.Nd4 Qxa8 17.Nb5 Qb7 18.a4 bxa3 19.c4 d5 20.bxa3 dxc4 21.a4. The move played gives Black more chances to go wrong.

15...bxc3?!

Black goes wrong. 15...Ra6 16.c5 Qc7 is ugly, but Black has chances to untangle.
16.Rfc1! Ba6 17.Qf2 Ra7 18.Rxc3 Qb5 19.Nc8



19...Rb7

Leaving c7 underprotected, but 19...Ra8 20.a4 Qh5 (20...Qb7 21.Nxa5) 21.Nb6 Ra7 22.g4 Qe5 23.Nc4 Bxc4 24.Rxc4 and Black has no good place to move the hanging a7-rook and protect against invasion on c8: 24...Rb7 25.Rc8+ Ke7 26.Bc5+ d6 27.Bb6 Qd5 28.Nxa5+-
20.Nd6+!! Bxd6 21.Rc8+ Ke7 22.Qh4+ f6 23.Rxh8 a4?

Woozy, Black fails to find a better defense in 23...Qd3 24.Re1 Rb5 25.Qxh7 Qxh7 26.Rxh7 Kf7
24.Qxh7 Bxh2+ 25.Qxh2 axb3 26.axb3

Or 26.Qh7 Kd6 27.Rd1+
26...Qd3 27.Bc5+ d6 28.Bxd6+! Qxd6 29.Re8+ Kxe8 30.Qxd6 Kf7 31.Rc1 Rxb3 32.Re7+ Kg6 33.Qg3+ Kf5 34.Rc5+ e5 35.Qg4# 1-0

Notes by NM Drew Sarkisian

Sicilian B30

**Michal Kujovic 2225
 Amon Simutowe 2432**

2003 Texas Class Chp. (2)

1.e4 c5 2.Nf3 Nc6 3.Bb5 e6 4.0-0 Nge7 5.Re1 a6 6.Bf1 Ng6 7.c3 d5 8.exd5 Qxd5 9.d4 Be7 10.c4 Qd6 11.d5 exd5 12.exd5 Nb4 13.Nc3 Bf5 14.Nd2 0-0-0??



Trying to improve upon 14...Rd8 15.Nc4 (15.a3 Nxd5 16.Nc4 Qd7 17.Nxd5 Qxd5 18.Qxd5 Rxd5 19.Ne3 Re5=) 15...Qf6 16.Ne3 0-0 as in Kamath-Wajih, Calcutta 1994. Unfortunately, placing the Black king on c8 opens up possibilities for a knight fork on b6 hitting c8 and d5.
15.a3 Bc2

15...Nxd5?? 16.Nc4 Qc6 17.Nxd5 and either recapture on d5 is answered by 18.Nb6+.
16.Qf3 Ne5 17.Qh3+ f5 18.axb4 cxb4 19.Nde4 Qd7

19...Bxe4 20.Nxe4 Qxd5 21.Qxf5+ Rd7 22.Bd2 is just as bad.

20.Ng5 Ng4 21.Bf4 Bc5 22.Re2 22.Rxa6! bxa6 23.Bxa6+ Qb7

24.Bxb7+ Kxb7 25.Nce4 is also nice. The rest is a bloodbath.
22...Nxf2 23.Rxf2 Rde8 24.Bb5! Qd8 25.Bxe8 Rxe8 26.Ne6 Rxe6 27.dxe6 Qd4 28.Be3 Qxe3 29.Qxe3 Bxe3 30.Nd5 Bxf2+ 31.Kxf2 Bb3 32.e7 Kd7 33.Re1 Ke8 34.Nc7+ 1-0

Notes by NM Drew Sarkisian

French C00

**Marcin Kaminski 2465
 Karl Disher 1884**

2003 Texas Class Chp. (3)

1.e4 e6 2.Qe2 c5 3.Nf3 Nc6 4.g3 d6 5.Bg2 Nf6 6.0-0 Qc7 7.c3 Ne5 8.Ne1 Bd7 9.Na3 Be7 10.d4 Ng6 11.f4 e5 12.f5 Nf8 13.dxe5 dxe5 14.Nf3 Be6?



15.Nxe5 N8d7

15...Qxe5?? 16.Bf4+-
16.Nxc6 bxc6 17.Nc4 Nb6 18.Bf4 Qc8 19.Nd6+ Bxd6 20.Bxd6 Qb7 21.Bxc5 Nfd7 22.Bd6 Nc8 23.e5 Nxd6 24.exd6+ Kf8 25.Qe7+ Kg8 26.Kh1 Rb8 27.Rae1 Qc8 28.Qe4 c5 29.Qc6 Nf6 30.Re7 Qxc6 31.Bxc6 h6 32.Rxa7 Kh7 33.b3 Rb6 34.Rc7 1-0

Texas Postal Championship:

Send \$10 entry to *Jimmy Irvin,*
10222 Outlaw Bend
Converse, TX 78109

**Don't Miss the
 Texas Team Championship**
see ad, Page 20

Ruy Lopez C99

John Cole 2290

Michal Kujovic 2225

2003 Texas Class Chp. (3)

1.e4 e5 2.Nf3 Nc6 3.Bb5 a6 4.Ba4 Nf6
5.0-0 b5 6.Bb3 Be7 7.Re1 d6 8.c3 Na5
9.Be2 c5 10.d4 exd4 11.cxd4 Qc7
12.h3 0-0 13.Nbd2 Bb7 14.d5 Rfe8
15.Bd3 Nc4



16.b3

16.Nf1 Nb6 17.Ng3 g6 18.Bg5
Nbd7 19.Qd2 was a quick draw in
Velimirovic-Ivanovic, Bar; 16.Bxc4
bxc4 17.Re3 a5 18.Rc3 Qd7 19.Qc2
Ba6 20.Nxc4 Rxc4 21.Rxc4 Bxc4
22.Qxc4 Rc8 23.Qd3 Qa4 24.Bg5 h6
25.b3 Qa3 26.Bxf6 Bxf6 27.Qd2 and
White was up a clean pawn in Fischer-
Rosetto, Buenos Aires 1970.
16...Nb6 17.Bb2 Qd7 18.Nf1 a5
19.Qe2 b4 20.Ne3 Bf8 1/2-1/2

Notes by NM Drew Sarkisian

Ruy Lopez C77

Rade Milovanovic 2434

Magesh Panchanathan 2467

2003 Texas Class Chp. (3)

1.e4 e5 2.Nf3 Nc6 3.Bb5 a6 4.Ba4 Nf6
5.d4

A very old move, trying to take the
game out of modern theory as quickly
as possible.

5...Be7 6.Nxe5

Apparently a new try in this position.
6...Nxe5 7.dxe5 Nxe4 8.Qg4 Bg5

8...Ng5!? may be playable; if 9.f4
Black responds with 9...h5! 10.Qe2 Ne6
9.0-0 Bxc1 10.Qxg7 Rf8 11.Rxc1 Qh4
12.g3 Qh5

White may have been hoping for
12...Nxc3, but the position after
13.hxg3 Qxa4 14.Nc3 Qc6 15.Re1 Qg6
(looks forced) 16.Qf6 Qxf6 17.exf6+
Kd8 18.Re7 a5! (with the idea of Ra8-
a6) looks only slightly better for White.
Black is interested in more.

13.Nc3

13.Bb3!?

13...Nxc3 14.bxc3 b5 15.Bb3 Bb7
16.Qf6 c5 17.c4 Rg8 18.cxb5 axb5
19.c3

This doesn't seem to be enough to
keep any sort of initiative. 19.Rcb1
Ra6 20.Qf4 Rh6 21.h4 looks slightly
better for White.

19...Ra6 20.e6 fxe6 21.Bd1?

21.Qf4!/? Bc6 22.Re1.

21...Qd5

Wins the a2 pawn, but 21...Qh3!/?
looks very good for Black after 22.Bf3
(22.f3? e5! 23.Qxe5+ Re6+) 22...Rf8
23.Qxf8+ Kxf8 24.Bxb7 Ra3.
22.f3 Rxa2 23.Rxa2 Qxa2 24.Qh6
Rf8 25.Qh5+ Rf7



26.Qxc5?

26.Qg5 keeps things interesting,
though Black still has a large advantage.
26...Qd2 27.Ra1 Qe1+ 28.Kg2
Bxf3+! 29.Bxf3 Qxa1 30.Qc8+ Ke7
31.Qc5+ Kd8 32.Qg5+ Ke8 33.Qg8+
Ke7 34.Qg5+ Kd6 35.Qd2+ Ke7

36.Qe3 Qa2+ 37.Kh3 Qa3 38.Be4
Qd6 39.Qg5 e5 40.Qe3 Qe6+ 41.Kg2
Qa2+ 42.Kh3 Qf2 43.Qh6 Qf1+
44.Bg2 Qf5+

This doesn't jeopardize Black's
winning chances, but he had an attrac-
tive alternative in 44...Qe2! and the
pressure on the second rank is deci-
sive: 45.Qh4 Rf2 46.Qb4 Qh5+
(46...Rxc2?? 47.Qc5+ and Black can-
not avoid perpetual check) 47.Qh4
Qf5+ 48.g4 (48.Qg4 Qxc4+ 49.Kxc4
Rxc2) 48...Qf4! and White has nothing
better than 49.Qg3 Qh6+ 50.Qh4
Qxh4+ 51.Kxh4 Rxc2.

45.g4 Qf4 46.Qa6 Qe3+ 47.Kh4 Qf2+
48.Kh3 Qe3+ 49.Kh4 Qf4 50.Qa8
Qh6+ 51.Kg3 Qe3+ 52.Kh4 Rf6
53.g5 Qe1+ 54.Kh3 Qxc3+ 55.Kh4
Qe1+ 56.Kh3 Qe3+ 57.Kh4 Qd4+
58.Kh3 Rf4 59.Qa5+ Kd6 0-1

Sicilian B32

Curtis Brooks 2003

Gary Simms 2209

2003 Texas Class Chp. (3)

1.e4 c5 2.Nf3 Nc6 3.d4 exd4 4.Nxd4
e5 5.Nb3 Nf6 6.Bg5 Be7 7.Bxf6 Bxf6
8.Be2 0-0 9.0-0 d6 10.N1d2 Be6 11.c4
a5 12.a3 a4 13.Nc1 Bg5 14.Bd3 Qb6
15.Rb1 Qa5 16.Nf3 Bg4 17.h3 Bxf3
18.Qxf3 Bxc1 19.Rfxc1 Nd4 20.Qg4
Qc5 21.Rc3 b6 22.Kh1 Qc8 23.Qg3
Qe6 24.f4 f6 25.c5 Kh8 26.cxb6 Qe8
27.f5 Rc8 28.b7 Rxc3 29.bxc3 Nb3
30.Be4 Qc6 31.Bxb3 axb3 32.Rxb3
Rb8 33.Qd3 Rxb7 34.Rxb7 Qxb7
35.Qxd6 Qb1+ 36.Kh2 h6



37.Qd2 Qxe4 38.g4 Qc4 39.Kg3 Kh7
40.Kh2 Qf1 41.a4 e4 42.Qe3 Qd3
43.Qe1 1/2-1/2

Center Counter B01

Rade Milovanovic 2434

Michal Kujovic 2225

2003 Texas Class Chp. (4)

1.e4 d5 2.exd5 Qxd5 3.Nc3 Qd6 4.d4
Nf6 5.g3 Bg4 6.Be2 Bxe2 7.Qxe2 Nc6
8.Nf3 0-0-0 9.Bf4



9...Nxd4 10.Nxd4 Qxd4 11.Rd1 Qb4
12.Rxd8+ Kxd8 13.0-0 e6 14.Rd1+
Bd6 15.Nb5 Qe4 16.Qd2 Qd5
17.Nxd6 cxd6 18.Qe1 Qc5 19.Bxd6
Qxc2 20.Bc7+ Kxc7 21.Rc1 Qxc1
22.Qxc1+ Kb8 23.Qf4+ Kc8 24.Qg5
Rg8 25.Qc5+ Kd7 26.Qxa7 Kc7
27.Qc5+ Kd7 28.Qa7 Kc7 29.a4 Nd5
30.a5 Rb8 31.b4 h5 32.h4 g6 33.b5 f6
34.Qc5+ Kd7 35.a6 bxa6 36.Qc6+
Ke7 37.bxa6 Rb6 38.Qc8 f5 39.a7
Rb1+ 40.Kg2 Nb6 41.Qb7+ Kf6
42.a8Q 1-0

Notes by NM Drew Sarkisian

Classical Dutch A96

Lester Van Meter 2213

Keith Hayward 2283

2003 Texas Class Chp. (4)

1.d4 f5 2.Nf3 Nf6 3.g3 e6 4.Bg2 Be7
5.0-0 0-0 6.c4 d6 7.Nc3 Ne4 8.Qc2
Nxc3 9.Qxc3 a5 10.b3 Bf6 11.Bb2
Nc6 12.e3 e5 13.a3 g5 14.Rfd1 e4
15.Nd2 g4 16.b4 Qe8 17.Nb3 a4

18.Nc1 Nd8 19.Ne2 Ne6 20.Qc2 Ng5
21.Nf4 c6 22.d5 Be5 23.c5



23...dxc5 24.Bxe5 Qxe5 25.Qxc5 Bd7
26.Rac1 Rac8 27.d6 Qxc5

The passed d-pawn is firmly block-
aded; the question is whether or not
Black can generate counterplay against
the c5 pawn.

28.bxc5 Ra8 29.Rb1 Rf8 30.Rb4
Ra5 31.Re1 Kf7 32.Rcc4

Getting the bishop into the action
on the queenside with 32.Bf1 is better.
32...Rb5 33.Kf1 33...Bf1 33...Ne6
34.Nxe6?!

Now things get ugly fast for White.
34.Rxa4 Nxc5 35.Rab4 Rxb4
(35...Ne6 36.Rxb5 cxb5 37.Rb4)
36.axb4 Ne6 37.h3 gxh3 38.Bxh3 Kf6
isn't a great ending for White, but it's
not nearly as cut and dried as what
happens next.

34...Bxe6 35.Re1

Or 35.Rc3 Rxb4 36.axb4 b6+
35...Rxb4 36.axb4 a3 37.Ke1 b6!
38.b5 bxc5 39.bxc6 a2 0-1

Notes by NM Drew Sarkisian

Classical Dutch A99

D. Datta 2038

Mark Dejmek 2154

2003 Texas Class Chp. (4)

1.e4 f5 2.Nc3 Nf6 3.d4 e6 4.Nf3 d6
5.g3 Be7 6.Bg2 0-0 7.b3 Qe8 8.0-0
Nbd7 9.Bb2 Qh5 10.Nd2 10.Ne1
10...e5 11.Nd5 Bd8 12.e4 Qg6 13.exf5
Qxf5 14.Qf3 Qg6 15.Qc3 Nxd5

16.Bxd5+ Kh8



17.Be4 Qh6 18.dxe5 Nxe5 19.f4 Ng4
20.Nf3 c6 21.Qd2 Bb6+ 22.Bd4 Nf6
23.Bc2 Bh3 24.Rfe1 Bxd4+ 25.Nxd4
d5 26.c5

26.Re7 dxc4 27.Rxb7 Rfd8 28.Qc3
Nd5 29.Qf3 (29.Qxc4 Nxf4 30.Re1
Ng2! 31.Ree7 Qc1+ 32.Qf1 Qxf1+
33.Kxf1 Rxd4 34.Rxg7 Ne3+ 35.Kf2
Nxc2 is a mess after 36.Rxh7+ Kg8
37.Rbg7+ Kf8 38.Rf7+ Ke8 39.Re7+
Kd8 40.Re2 Rc8) 29...Nxf4 is slightly
better for Black.

26...Rae8 27.Nf5 Bxf5 28.Bxf5 Qh5
29.Bc2 Qh3 30.Rxe8 Rxe8 31.Re1
Qd7 32.b4 Re7 1/2-1/2

Notes by NM Drew Sarkisian

Sicilian B41

Bradley Sawyer 1915

Alexander Chua 2093

2003 Texas Class Chp. (4)

1.e4 c5 2.Nf3 e6 3.d4 cxd4 4.Nxd4 a6
5.c4 Nf6 6.Nc3 Bb4 7.Bd2 Qb6 8.Nc2
Bxc3 9.Bxc3 Nxe4 10.Bd4 Qa5+
11.b4 Qg5 12.h4 Qg6

12...Qf4 13.g3 Nxe3 14.fxg3
Qxg3+ 15.Bf2 Qc3+ 16.Qd2 was
agreed drawn in Junker-Farago,
Regensburg 1997.

13.Qf3

More consistent with 12.h4 was
13.h5!? Qh6 14.Qc1

13...f5 14.Bd3 h5 14...Nc6 15.h5 Nxd4
16.Nxd4 Qf6 17.Qe3 d5

15.Bxe4 fxe4 16.Qc3 0-0 17.0-0 b5



Not 17...Qxg2?? 18.Rhg1.
18.Rh3 Nc6 19.Bxg7! Rf4 20.Be5
Rxb4!

20...Nxe5 21.Qxe5 Qh6 22.Rg3+
Kf7 23.Kb1 also appears playable.

21.Rxb4 Qg5+ 22.Ne3

22.Rf4!? Nxe5 23.Qe3 (threaten-
ing 24.Rf8+ winning the Qg5)
23...Qxg2 24.Qxe4 Qxe4 25.Rxe4
Nxc4 26.Rh4.

22...Qxb4 23.g3 Qg5 24.Bf6 Qg6
25.g4 Kf7 26.Bh8 h4 27.f4

27.a3 looks stronger.

27...exf3 28.Rf1 Bb7 29.Rxf3+ Kg8
30.Rh3 a5 31.Rxb4 Nxb4 32.Kb2?!

White presses too hard. Necessary
was 32.Qf6 Qxf6 33.Bxf6 Nd3+
34.Kc2 Ne1+ 35.Kd1 Nf3.

32...Rf8 33.Rh2 Nd3+ 34.Ka1 b4

Or 34...Rf3!? 35.Qd4 Rg3 36.a4
bxc4 37.Qxd7 Rg1+ 38.Ka2 Nb4+
39.Ka3.

35.Qd4 Rf7 36.Qb6 Bc6

Playing it safe. The chaotic
36...Qg5 shows that White's king is
more exposed than Black's after
37.Bb2 Nxb2 38.Qxb7 Qxe3 39.Qb8+
Kg7 40.Qh8+ Kg6 41.Kxb2 (41.Qh5+
Kf6 is not good for White) 41...Qa3+
42.Kc2 Qxa2+ 43.Kd3 Qb3+ 44.Kd2
Qc3+ 45.Qxc3 bxc3+ 46.Kxc3 Rf3+
47.Kc2 Rf4 is winning for Black.

37.Qd8+ Rf8 38.Qh4

Black could still play for a win
after 38.Qh4 Kf7.

1/2-1/2

Four Knights C47

Marcin Kaminski 2465

Magesh Panchanathan 2467

2003 Texas Class Chp. (5)

1.e4 e5 2.Nf3 Nc6 3.Nc3 Nf6 4.g3 d5
5.exd5 Nxd5 6.Bg2 Be6 7.0-0 Bc5
8.Nxe5 Nxe5 9.d4 Nxc3 10.bxc3 Bd6
11.dxe5 Bxe5 12.Bxb7 Qxd1 13.Rxd1
Rb8 14.Bc6+ Ke7 15.Bg5+ f6 16.Be3
Bxc3 17.Bxa7 Rbd8 18.Bc5+ Kf7
19.Rab1 Bxa2 20.Rxd8 Rxd8 21.Rb7
Rd1+ 22.Kg2 Be5 23.Rb8 Bd5+
24.Bxd5+ Rxd5 25.Rf8+ Kg6 26.Be3
Bd4 27.e4 Rd7 28.Kf3 Bxe3 29.Kxe3
Kf5 30.Re8 h5



31.h3 g6 32.f3 Rd1 33.Rc8 Re1+

1/2-1/2

Notes by NM Drew Sarkisian

Closed Sicilian B23

Keith Hayward 2283

John Cole 2290

2003 Texas Class Ch. (5)

1.f4 e5 2.Nf3 g6 3.e4 Nc6 4.Nc3 Bg7
5.Bb5 Nd4 6.Bd3 d6 7.Nxd4 cxd4
8.Ne2 Nf6 9.0-0 0-0 10.e3 dxc3
11.dxc3 Qc7

Here (or on his next move), Black
should commence queenside opera-
tions with 11...b5! The minority attack
will soften up the a1-h8 diagonal and
generate significant counterplay.

12.h3 b6 13.Nd4 Bb7 14.Qe2 Nd7
15.f5 Ne5 16.Bg5 a6 17.Rf2 b5
18.Raf1 Rae8 19.a3 Ba8 20.fgxg6 hxg6

21.Bb1 Nc4 22.Bc1 Qc5 23.Nf3 d5
24.e5 f5

If this weakening of the kingside is
the best Black has, he's in for a very
bad time in a few moves.

25.Kh1



25...a5?

Battening down the hatches with
25...e6 isn't pretty; one gets the impres-
sion that the Black kingside should fall
sooner or later. The move played
ensures that it falls sooner...

26.Nh4 Nxe5

Bringing up the "fighting king"
with 26...Kh7 gets mated after
27.Nxg6! Kxg6 28.Rxf5 Rxf5
29.Bxf5+ Kf7 30.Qh5+ Kf8 31.Be6+;
Flinging Her Majesty into the fray falls
prey to the same motif: 26...Qb6
27.Nxg6! Qxg6 28.Rxf5 Rxf5 29.Bxf5
Qc6 30.Qh5

27.Nxg6! Nxg6 28.Qe6+ Kh7 29.Rxf5
1-0

Notes by NM Drew Sarkisian

Sicilian B94

Mark Dejmek 2154

Bradley Sawyer 1915

2003 Texas Class Chp. (5)

1.e4 c5 2.Nf3 d6 3.d4 cxd4 4.Nxd4
Nf6 5.Nc3 a6 6.Bg5 e5 7.Bxf6 Qxf6
8.Nd5 Qd8 9.Nf5 Bxf5

Foltys-Oponcensky, Schlecter
Memorial 1949 continued 9...Be6
10.Bc4 Nd7 11.0-0 Rc8 12.Bb3 Nc5
13.Qf3 Nxb3 14.Qxb3 Rc5 15.Rad1

Rb5 16.Qa4 Qa5 17.Qxa5 Rxa5 18.a3
Rxd5 19.Rxd5 Bxd5 20.exd5 g6
21.Ne3=.

10.exf5 Nd7 11.g3 Rc8 12.Bg2 b5
13.0-0 Nb6 14.a4 Be7 15.axb5 axb5
16.Ra6 Nxd5 17.Bxd5

White's more active pieces give
him a comfortable advantage.

17...0-0 18.Qd3 Qc7 19.c3 Qc5
20.Ra5 Rb8 21.Rfa1 Bd8



22.b4 Qc8 23.Ra6?!

Now is the time to get the queen-
side moving! 23.Rxb5 Rxb5 24.Qxb5
Qxf5 (24...Qxc3 25.Ra7 is just as bad)
25.Ra7 g6 26.Qc6 Qf6 27.c4 with complete
domination. Black cannot hold
off the pressure against f7 and contend
with White's queenside pawn.

23...Bb6 24.f6 Qd8 25.fxg7 Kxg7
26.Kg2 Qd7 27.Qf3 f5

Suddenly, Black has counter-
play...even if White is better here,
Black is now getting his own pieces
back into the struggle.

28.Bc6 Qe6 29.Bxb5 Bxf2

The aggressive-looking 29...f4
looks to favor White after 30.Qe4! f3g3
31.Ra7+! Bxa7 32.Rxa7+ Rf7 (if
32...Kf6?? the quiet 33.Bd3! with the
threat of 34.Qh4+ wins handily)
33.Bc4 Qxc4 34.Qxc4 Rxa7 35.hxg3
30.Bc6 30.Qc6!? 30...Bb6 31.Bd5 Qf6
32.Qh5 Kh8 33.c4 Bd4 34.Rb1 f4
35.Be4 h6 36.c5 fxg3

36...f3+!? 37.Kf1 Qe6 38.Rc1 Rf6
gives White a chance to throw away
the game with 39.Rxd6?? Qa2.

37.Rxd6 Qf2+ 38.Kh1 Qxh2+

39.Qxh2 g3h2 40.Rxh6+ Kg7
41.Rg6+ Kf7



42.Kxh2 Ke7 43.Kg3

A better try was 43.c6 though it
appears that Black can defend himself
after 43...Ra8 44.Rb3 Rh8+ 45.Kg3
Rhg8 46.Rxg8 Rxc8+ 47.Kf3 Rh8
48.Kg4 Rg8+ 49.Kf5 Rf8+ 50.Kg5.

43...Rf4 44.Bd5 Bxc5 45.Rh1 Bf2+
46.Kg2 Bh4 1/2-1/2

Sicilian: Steinitz B20

Karl Disher 1884

Mikhail Langer 2277

2003 Texas Class Chp. (5)

1.e4 c5 2.g3 d5 3.exd5 Nf6 4.Nc3
Nxd5 5.Bg2 e6 6.Nge2 Ne7 7.d3 Be7
8.Be3 0-0 9.0-0 Nd7 10.f4 Nf6 11.h3
Ned5 12.Bf2 Bd7 13.Ne4 Re8
14.N2c3 Nxc3 15.Nxc3 Be6 16.Ne4 e4
17.Nxf6+ Bxf6 18.Bxc6 Rxc6 19.d4



19...c3 20.bxc3 Rxc3 21.Rb1 Qc7
22.Rb3 Re8 23.d5 Rxc2 24.d6 Qc6

25.d7 Rd8 26.Rd3 Rxa2 27.Rd6 Qc7
28.Qd3 Be7 29.Rd4 h6 30.Qd1 Be5
31.Rd3 Qc6 32.f5 exf5 0-1

Notes by NM Drew Sarkisian

Queen's Gambit Declined D35

Joseph Drake 1912

Anh Tuan Nguyen 1925

2003 Texas Class Chp. U2000 (4)

1.d4 d5 2.c4 e6 3.Nc3 Nf6 4.exd5
exd5 5.Bg5 Be7 6.e3 0-0 7.Bd3 b6?



7...c6; 7...Nbd7.

8.Bxf6 Bxf6 9.Qh5 g6 10.Qxd5 e6
11.Qxd8 Rxd8 12.Be4 a6 13.Nge2
Ra7 14.0-0 Rad7 15.Rfd1 Bb7
16.Rac1 b5 17.Bf3 Bg7 18.Ne4 Re7
19.Nc5 Be8 20.Kf1 g5 21.h3 h6
22.Ng3 f5 23.Nb3 Rd6 24.Na5 Rc7
25.b4 Bf8 26.a3 Rf6 27.Nh5 Rg6
28.e4 fxe4 29.Bxe4 Rd6 30.d5 Re7
31.Bf3 Red7 32.dxc6 Rxd1+ 33.Rxd1
Rxd1+ 34.Bxd1 Bd6 35.Bb3+ Kf8
36.Nf6 Be5 37.Nd5 Nxc6 38.Nxc6
Bb2 39.a4 bxa4 40.Bxa4 Bd7 41.b5
axb5 42.Bxb5 Kg7 43.Ne3 Ba3
44.Nd4 Be8 45.Nef5+ Kh7 46.Bd3
Bd7 47.g4 Kg6 48.Ke2 h5 49.Ng3+
Kh6 50.Nxh5 Be8 51.Ng3 Be5
52.Ndf5+ 1-0



King's Indian E90

Mark McCue 1829

Timothy Banks 1904

2003 Texas Class Chp. U2000 (5)

1.Nf3 Nf6 2.c4 g6 3.Nc3 Bg7 4.e4 d6
5.d4 0-0 6.h3 e5 7.Bg5 h6 8.Bh4 Re8
9.dxe5 dxe5 10.Qxd8 Rxd8 11.Bxf6
Bxf6 12.Nd5 Nd7 13.Nxc7 Rb8
14.Nd5 Bg7 15.Be2 Nc5 16.Nd2 f5
17.f3 fxe4 18.fxe4 Rf8 19.b4 Ne6
20.Ne7+ Kh7 21.Nxc8 Rbxc8 22.Bg4
Rce8 23.Bxe6 Rxe6



24.Rf1?!

24.Ke2 Rd6 25.Nb3.

24...Rxf1+ 25.Kxf1 Rd6 26.Ke2 Rd4
27.a3 h5 28.e5 Bh6 29.Ra2 Kg8
30.Nb3 Rxe4+ 31.Kd3 Re3+ 32.Kc4
b5+ 33.Kxb5 33...Rxb3
34.Rc2 e4 35.c6 Bf4 36.Ka4 Rd3
37.e7 Bxc7 38.Rxc7 Kf8 39.Rc4 e3
40.Re4 Kf7 41.b5 Kf6 42.g4 hxg4
43.hxg4 Kg5 44.Kb4 Kh4 45.a4 Kg3
46.Kc4 Ra3 47.Kb4 Rd3 48.Kc4

1/2-1/2

Sicilian B86

Clemente Rendon 1879

Aurelio Gonzalez 1895

2003 Texas Class Chp. U2000 (4)

1.e4 c5 2.Nf3 d6 3.Bc4 e6 4.d4 cxd4
5.Nxd4 a6 6.Nc3 Nf6 7.Be3 Be7
8.f3 0-0

8...Nc6 9.Qd2 Qc7 10.Bb3 0-0
11.0-0 Bd7 12.Rad1 b5 13.Qf2 Kh8
14.Kh1 Rac8 15.Rfe1 Ne5 16.h3 Nc4
17.Bxc4 Qxc4 18.Nb3 Qc7 was rough-
ly equal in Felsler-Kleinwaechter,
Rheda-Wiedenbrueck 2001.
9.Qd2 d5



10.Bb3?!

White should resolve the central
tension immediately: 10.exd5 Nxd5
(10...b5 11.Bb3 b4 12.Na4 Nxd5
13.Bxd5 exd5 14.Nb3 Re8 and the
weakened Black queenside favors
White) 11.Bxd5 exd5 12.0-0-0.

10...dxe4?!

Why not 10...e5 11.Nde2 d4, pick-
ing up a piece for two pawns?

11.Nxe4 Nxe4 12.fxe4 Qc7 13.0-0-0
Bd7 14.Bg5 Bc5 15.Bh4?? Nc6??

Black wins a piece after 15...Bxd4
16.Qxd4 Qf4+ 17.Rd2 Qxh4.

16.Nf3 Be8 17.Qg5 Na5 18.Rd3

Nxb3+ 19.Rxb3 f6 20.Qg4 e5 21.Rc3
Qe7 22.Rd1 Bc6 23.Rcd3 Rad8?

Dropping a pawn. 23...Qf7 keeps
matters under control.

24.Rxd8 Rxd8 25.Rxd8+ Qxd8
26.Nxe5 Be3+ 27.Kb1 Bxe4??

The final mistake. 27...Be8.

28.Qe6+

Games like this happen to every-
body once in a blue moon.

1-0

Notes by NM Drew Sarkisian

Ruy Lopez C64

Kelly Clover 1819

George Culler 1847

2003 Texas Class Chp. U2000 (4)

1.e4 e5 2.Nf3 Nc6 3.Bb5 Bc5 4.c3 d6
5.d4 exd4 6.cxd4 Bb4+ 7.Bd2 Bxd2+
8.Nbxd2 Bd7 9.0-0 Nh6

This may sideline the knight. The
more usual 9...Nf6 looks reasonable
after 10.Re1 0-0 11.Bd3 Bg4 12.Qb3
Rb8 13.a3 Nh5 14.Bc2 Re8 15.e5
dxe5 16.dxe5 Koernig-Ende, Germany
1991.

10.Rc1 0-0 11.a3 Re8 12.Re1 a6
13.Bd3 Kh8 14.Qc2 Re8 15.e5 dxe5
16.dxe5 g6? 17.Qc3! Kg8 18.Ne4
Rf8?

Black can delay his defeat with
18...Ng4 19.Nc5 but after 19...Rb8
20.Rcd1 Qc8 (20...Re7 21.Bc4! Qe8
22.Rxd7 Rxd7 23.Nxd7 Qxd7 24.e6 is
crushing) 21.Bxa6 is winning for
White.

19.Nf6+

Winning a piece after 19.Nf6+ Kg7
20.Nxd7.

1-0

Quote from a Great...

"A chess game is divided into three stages: the first...when you hope you have the advantage, the second...when you believe you have an advantage, and the third...when you know you're going to lose!"

- Savielly Tartakower

Two from Magesh



by IM Magesh Panchanathan

Center Counter B01
Magesh Panchanathan 2467
Jonathan Allen 1908
2003 Dallas Open (2)

1.e4 d5 2.exd5 Qxd5 3.Nf3 Nf6 4.d4 Bf5 5.Be2 e6 6.0-0 Be7 7.c4 Qd8 8.Nc3 Nbd7 9.b3 0-0 10.Bb2 c5 11.Nh4

I felt that the bishop might be better placed on the a8-h1 diagonal rather than the b1-h7 diagonal.

11...Be4

11...cxd4 12.Nxf5 dxc3 13.Nxe7+ Qxe7 14.Bxc3 And White clearly has the upper hand thanks to the bishop pair and the queen side majority.

12.Nxe4 Nxe4 13.Nf3 cxd4 14.Nxd4 Bc5



15.Qc2?!

15.Bf3 Nd6 This move would have allowed White to maintain a tiny advantage and get enough time to improve the position. After the move in the game, I had to concede my bishop pair.

15...Ndf6 16.Rad1 Qb6 17.Bf3 Ng5 18.h4! Nxf3+

18...Bxd4? 19.hxg5 Bxb2 20.Qxb2+/- 19.Nxf3 Be7?

Clearly letting White get a very good initiative in the kingside. Better

is 19...Rfd8 with very little advantage for White. Black's doubled pawns might be easily compensated with the active light squared bishop.

20.Ng5 g6 21.Qc3 Qc6

21...Qc7 would have given more resistance, yet White has an overwhelming advantage.

22.Rfe1 Rfd8 23.Rxd8+ Rxd8 24.Ne4 Rd1+ 25.Rxd1 Qxe4



26.Qxf6!

This move makes a very good tactical finish to the game, although, White already has a won position.

26...Bxf6 27.Bxf6.

1-0

Trompowsky A45
Evan Rosenberg 2094
Magesh Panchanathan 2467
2003 Dallas Open (5)

1.d4 Nf6 2.Bg5 Ne4 3.Bf4 c5 4.d5 Qb6 5.Be1 e6 6.f3 Nf6 7.c4 exd5 38.exd5 c4 9.e3 Bc5 10.Bxc4 0-0 11.Kf2 Re8 12.Qd3 Qd6 13.Nc3

In the game Ramesh - Panchanathan, National Championship, India, 2001, 13.Ne2 b5 14.Bxb5 Na6 was played against me. Black had very interesting plans to acquire the initiative in this variation.

13...a6



13...Qf4?! was my main idea of the queen maneuver to d6, to threaten Qf4 and also b5 at the same time. After analyzing more, I changed my mind because of 14.Nge2 Bxe3+? (14...Qe5 the Queen retreat is almost forced, but it is a waste of tempo.) 15.Bxe3 Ng4+ 16.Ke1 (any other king move would allow Black to take the Bishop on e3 with a tempo.) 16...Rxe3 17.fxg4! (I missed this move initially.) 17...Rxd3 18.Nxf4 Rd4 Black regains the piece, but has a really awkward position. It is very difficult to develop the queenside pieces.

14.a4 Qe5 15.Nge2 d6 16.Nd4 Nbd7 17.Rb1 Qh5 18.Nce2 Ne5

Black has slowly developed all his pieces into the attack.

19.Qc3



19...Bf5?

I was very tired, this game being the fifth game in two days with twelve hours of play a day! This fatigue contributed directly to this move. I was lucky enough to get away without losing a piece after 20.Ng3 was played. Other moves are better: 19...Nxc4 20.Qxc4 Qxd5 and Black regains the pawn with a very good play.; 19...Bd7 With the idea of Rc8; 19...Ba7 gives a promising position for Black, since White still has difficulties in developing his pieces.

20.Ng3 Qh4 21.Ndxf5 Qxc4 22.Qxc4 Nxc4 23.b3 Ne5 24.Rd1 a5 24...g6 25.b4! 25.h3 h5 26.Ne2 g6 27.Nfg3

It is clear that Black's compensation is slowly fading away after the exchange of queens.

27...Ned7 28.Nc3

The result favored both of us, although I had to be content to win the Dallas Open title and still manage to lose 3 FIDE rating points!

1/2-1/2

[Magesh had an amazing 2003. His tournament wins include: Asian Junior Champion, Southwest Open Champion, and the Dallas Open Title. --MLJ]

Letters to the Editor:

I appreciate the effort Tom Crane took to write an open letter to all TCA members (USCF Problems -- What are We Members Going to Do About It?, Texas Knights v. 45, No. 2 [November-December 2003]). However, I will not be joining him in providing gratuitous financial aid to USCF.

Technically, I may be a member of the USCF, but I consider myself first and foremost its customer. I joined the USCF in 1981 so I could get a chess rating. Ratings were possible not only because USCF maintained a rating database, but because it sanctioned clubs, directors, and tournaments; it enacted and enforced uniform tournament rules; and it updated ratings in a reasonably prompt manner. Unfortunately, the golden era of tournament and club play is behind us. Chess clubs are being supplanted by online chess play, and rated tournaments are in decline. With the loss of tournaments to rate and clubs to sanction, the USCF's raison d'être is now called into question.

Perhaps the changes in circumstances that have impeded the USCF from flourishing were unavoidable; the Federation's responses were not. USCF had the chance to offer the best electronic chess clock available to its members, and failed to do so. USCF had the ability and the opportunity to take the lead in establishing a premier online chess website, and failed to do so. USCF has had, and still has, the ability to streamline the rating process, and has failed to do so -- it's still not possible for a TD to update our ratings online. USCF had the chance to offer books to its members at reasonable prices, and has failed to do so. Look at your chess library. How many books did you order from USCF? How many did you order from Chess Digest, for less money and with better service?

I hope USCF recovers from its financial problems. I also hope my favorite restaurants and stores will stay in business. I support them by continuing to buy meals and products from them, not by giving them money. Since USCF is (currently) the only place where I can purchase a national chess rating and the right to play in nationally sanctioned tournaments, I'll continue to be a "member". But if USCF wants me to spend more money on it, then it needs to provide more attractive services and products.

Michael M. Simpson
Austin, Texas

19.fxe3!?, huh?

Dear NM Sarkisian:

In my game against John Hendrick [Texas Knights Vol 45 #2, p.20], you opined that 19 fxe3 (!?) would be interesting. Yes, but mostly for Black: 19.fxe3?? Bxg3!! (instead of 19...Rxe3? 20. N4f3) 20. hg Qxg3+ 21. Bg2 Ng4 22. Nf1 Qf2+ 23. Kh1 Re5 24. Nf3 Rh5+ 25. Nh2 Be4! and White's mated in a few.

Michael M. Simpson
Austin, Texas

Yes, you are absolutely correct...I missed that one. Nice find! Glad to see that somebody is reading this stuff.

Thanks!
--Drew

Solution:

Puzzle from back cover:

Answer:

- 1.Qxh7+ Kxh7
- 2.hxg6+ Kxh6
- 3.Be4 mate



Huddleston, Carvajal win Gallagher Memorial

NM Selby Anderson

The Jim Gallagher Memorial Tournament was held Nov. 22-23 at the TNI Building in San Antonio. Two experts won the Open section with 3.5, city co-champion Doug Huddleston and Cristian Carvajal, a Chilean student at UT Austin. The winners personally eliminated the master contingent of Anderson, Rohrbaugh, and Patty. The third round game Huddleston-Patty was especially wild.

Stephen Kattner, a local 1700 who plays like an expert,

Notes by NM Selby Anderson

Sicilian Closed B26

Dale Dike 2005

Steven Coyle 1579

Gallagher Memorial 2003 (1)

1.e4 c5 2.Nc3 Nc6 3.g3 g6 4.Bg2 Bg7
5.d3 e6 6.Be3 d6 7.Qd2 Nge7 8.Bh6
0-0 9.h4 Nd4 10.0-0 b5 11.h5 b4 12.
Nce2 e5 13.Bxg7 Kxg7 14.hxg6 fxg6
15.Qh6+ Kf7



This looks like a wipeout, but soon it will be White who is on the defensive.

16.Nxd4 exd4 17.f4 Ke8 18.Rf1 Qa5
19.Kb1 Be6 20.b3 Rc8 21.fx5 Rxf1+
22.Bxf1 dxe5 23.Qd2 Rc6 24.a4 h5
25. Bh3 Qc5 26.Nf3 Bxh3 27.Rxh3
Rf6 28.Qe2 Qc8 29.Rh4 Qc7 30.Nd2
Nc6 31.Rh2 Qf7 32.Nc4 Ke7 33.Kb2
Rf1 34.g4 h4 35.Rxh4 Qf4 36.Qd2

**Kf6 37.Rh7 Qxd2 38.Nxd2 Rf2
39.Rc7 and 0-1**

Notes by NM Selby Anderson

Sicilian Closed B25

Doug Huddleston 2072

Selby Anderson 2275

Gallagher Memorial 2003 (2)

1.e4 c5 2.Nc3 Nc6 3.g3 g6 4.Bg2 Bg7
5.d3 d6 6.f4 e6 7.Nf3 Nge7 8.0-0 0-0
9.Be3 Nd4 10.e5!? Nef5

Also playable are 10...Bd7 and 10...exd5.

11.Bf2 Nxf3+ 12.Qxf3 Nd4 13.Qd1
dxe5 14.fx5 Bxe5 15.Ne4 f5 16.Nxc5
Qc7

16...Qd6 17.b4 Nc6 18.Rb1 Bd4 =
Spassky-Hjartarson, Munich ECC 1991.
17.b4



17...Bg7?

17...f4! 18.c3 Nf5 19.g4 f3 20.Bxf3
Bxh2+ 21.Kg2 Ng7 = Krasenkov-Titz,
Oberwart 1990.

18.c3 Nb5 19.Qb3 Nxc3 20.Rfe1 Nb5
21.Rac1 Nd4 22.Nxe6! Qxc1??

22...Bxe6 23.Rxc7 Bxb3
24.Rxg7+! ±.

23.Nxd4+ 1-0

Notes by NM Selby Anderson

Diemer Gambit D00

Gary Zintgraff 1752

Gerald Castleberry 1500

Gallagher Memorial 2003 (3)

1.d4 Nf6 2.Nc3 d5 3.e4 dxe4 4.f3 e3
5.Bxe3 e6 6.Bd3 Be7 7.Nge2 c6 8.Qd2
Nbd7 9.Ng3 Nb6 10.Nge4 h6?!

The first gratuitous weakening
move. Better is 10...Nfd5 11.Bf2 Nxc3
12.Qxc3 Nd5 =.

11.0-0-0 Nbd5 12.Bf2 Bd7 13.h4 b5
14.g4 Nxc3

14...Bb4 15.g5 Nxc3 16.bxc3 Ba3+
17.Kb1 Nd5 =.

15.Qxc3 Nd5 16.Qd2 g6?

16... Nb4 is about equal.

17.Bg3 f5?

Black can no longer stop Nd6+, but
this doesn't help matters. (17...Nb4.)

18.gxf5 gxf5 19.Nd6+ Kf8 20.Be5



22.Qg2

22.Nb7! Qb6 23.Rxh4! (23.Nc5 +)
23...Qxb7 24.Rxh6 +-,

22...Bg5+ 23.f4

23.Qxg5! hxg5 24.Rxh7 Be8 25.
Rh8+ Ke7 26.Rxg5 +-,

23...Nxf4 24.Bxf4 Bxf4+ 25.Kb1 Qg5
26.Qf3?

26.Qxg5 Bxg5 27.Rxg5 +-
26...Qxg1+ 27.Rxg1 Bxd6 28.Qg2
Ke7 29.Qg6 Rah8 30.Re1 Kd8
31.Rh1? (31.Bxf5 ±) 31...Bf4 32.c4
Bg5 33.Qh5 Kc8 34. exb5
35.Qf3 Kc7 36.Rh3 Kb6 37. Qf2 Kb7
38.Rh1 Rc8 39.Qe2 a6 40.a3 Rc7
41.Qh5 Bc6 42.Re1 Bd5 43.Qg6
Rhe7 44.Qh5 Rc6 45.Bxf5 exf5 46.
Rxe7+ Bxe7 47.Qxf5 Rd6 0-1

Notes by NM Selby Anderson

Benko Gambit A57

Iva Davis 1666

James Cain 1514

Gallagher Memorial 2003 (2)

1.d4 Nf6 2.c4 c5 3.d5 b5 4.exb5 a6
5.b6 d6 6.a4 a5 7.Nc3 Nbd7 8.e4 g6
9.Nf3 Bg7 10.Be2 0-0 11.Qc2 Qxb6

Black should take with the knight,
as White's standard knight tour Nd2-c4
is now with tempo.

12.0-0 Ng4 13.Nd2 Nde5 14.h3 Nf6
15.f4 Ned7 16.Nc4 Qa7 17.Nb5

Four tempo moves in a row!

17...Qb8 18.Bd2 Nb6 19.Nxa5
Bd7 20.Nc6 Bxc6 21.dxc6 Ne8 22.Be3

Nc7 23.Bxg7 Kxg7 24.b4 Na6
25.bxc5 Nxc5 26.a5 Nc8 27.Rfb1 Ra7
28.Nxa7 Qxa7 29.Kh2 Qc7 30.Bf3
Qxc6 31.e5 Qa6 32.exd6 exd6 33.Rb8
Qd3 34. Qxd3 Nxd3 35.g3 Nc5 36.a6
1-0

Hors d'oeuvres, anyone?

Queen's Gambit D20

Duane Solley 1671

James Moon 1371

Gallagher Memorial 2003 (3)

1.d4 d5 2.c4 dxc4 3.e4 e5 4.Nf3 exd4
5.Bxc4 Bg4 6.Bxf7+ Ke7 7.Bxg8
Rxg8 8.Bg5+ 1-0

Benoni A46

Richard Lopez 1644

Toshio Imai 1400

Gallagher Memorial 2003 (3)

1.Nf3 Nf6 2.d4 c5 3.dxc5 Qa5+ 4.Nc3
Qxc5 5.e4 Nc6 6.Bd3 e5 7.0-0 Be7
8.Be3 Qa5 9.Nd2 a6 10.Nc4 Qd8
11.Bb6 1-0

Notes by NM Selby Anderson

French Advance C02

Doug Huddleston 2072

John Patty 2200

Gallagher Memorial 2003 (3)

1.e4 e6 2.d4 d5 3.e5 c5 4.c3 Nc6 5.Nf3
Bd7 6.a3 Qb6 7.b4 cxd4 8.cxd4 Nge7
9.Be3 Nf5 10.Bd3 Re8 11.0-0 Be7 12.
Nbd2 0-0 13.Nb3 Qd8 14.Qe2 f6
15.g4 Nxe3 16.Qxe3 fxe5 17.dxe5
Rxf3!

The placid 17...Qb6 18.Nbd4 fails
to solve Black's problems.

18.Qxf3 Nxe5 19.Qh3 Nxd3 20.Qxd3
Rc4 21.h3 Bd6

21...Bf6 22.Rac1 Bb5 23.Qf3 e5
24. Rfd1 Rxc1 25.Rxc1 b6 =.
22.Na5 Rxg4+?!!

An excellent gamble, but not quite
correct. (22...Rc7 =).

23.hxg4 Qh4



24.f4

24.Rfd1!? ±.

24...Qxg4+ 25.Kf2?

25.Kh1 b6 26.Nb3 Bb5 27.Qf3.
Qh4+ 28.Kg2 +-,



25...Bxf4?

Black can force perpetual check
with 25...Qxf4+ 26.Qf3 Qd2+ 27.Qe2
Qd4+ 28.Kg2 Qh4! 29.Kg1 Qd4+ =.

26.Qf3?

26.Rh1! +-,

26...Qh4+ 27.Ke2 Bb5+?

27...Qh2+ 28.Rf2? (28.Qf2! Qh5+
29. Qf3! =) 28...Bb5+ 29.Kd1 Qg1+ -/+.
28.Kd1 Bxf1 29.Qxf1 Qh2 30.Nb3
Be5 31.Rc1 Qh5+ 32.Qe2 1-0

Pirc Defense B07

Cristian Carvajal 2046

Don Marcott 2133

Gallagher Memorial 2003 (3)

1.e4 d6 2.d4 Nf6 3.Nc3 g6 4.Be3 c6 5.
Nge2 b5 6.e5 dxe5 7.dxe5 Qxd1+
8.Rxd1 Ng4 9.Bd4 Bg7 10.f4 h5 11.g3

a6 12.Bg2 0-0



13.a4 b4 14.Ne4 Bf5 15.h3 Nh6
16.Bc5 Re8 17.Bxb4 Nd7 18.Nd4 c5
19.Nxf5 Nxf5 20.Nxc5 Nxc5 21.Bxa8
Rxa8 22. Bxc5 Rc8 23.b4 Nxg3
24.Rh2 Nf5 25. Rhd2 Bh6 26.Rd8+
Rxd8 27.Rxd8+ Kg7 28.b5 axb5
29.a5 Bxf4 30.a6 Bxe5 31.a7 1-0

King's Indian E99

J.P. Hyltin 1956

John Hendrick 2117

Gallagher Memorial 2003 (3)

1.d4 Nf6 2.c4 g6 3.Nc3, Bg7 4.e4 d6
5.Nf3 0-0 6.Be2 e5 7.0-0 Nc6 8.d5 Ne7
9.Ne1 Nd7 10.Be3 f5 11.f3 f4 12.Bf2
g5 13.a4 Ng6 14.a5 a6 15.Nd3 Nf6 16.
c5 h5 17.h3 Nh8 18.Qb3 g4 19.fxg4
hxg4 20.hxg4 Nf7 21.cxd6 cxd6 22.
Bh4 Bh6 23.Qd1 Bg5 24.Bf2 Nh6 25.
Bb6 Qe7 26.Nf2



26...Bh4 27.Qd3 Nfxg4 28.Nxg4 Nxg4
29.Bxg4 Bxg4 30.Bf2 Rf7 31.g3 fxg3
32.Bb6 Raf8 33.Rxf7 Rxf7 34.Rf1

Bh3 35.Rxf7 Qxf7 36.Qe2 Bg5
37.Nd1 Qf4 38.Qd3 Bg4



39.Nc3 Qc1+ 40.Kg2 Qxb2+ 41.Kxg3
Bh5 42.Be3 Qa1 43.Bxg5 Qg1+
44.Kh3 Qg4+ 45.Kh2 Qxg5 46.Na4
Bg6 47. Nc3 Kg7 48.Kh3 Qg1 49.Qf3
Qe1 50. Kg2 Qa1 51.Qh3 Qb2+
52.Kg1 Qc1+ 53.Kf2 Qc2+ 54.Ke1
Qc1+ 55.Kf2 Qf4+ 56.Ke1 Bf7
57.Qg2+ Kf8 58.Ne2 Qh4+ 59.Kd1
Bh5 60.Kd2 Bxe2 and Black won the
queen ending 0-1

Notes by NM Selby Anderson

French Winawer C17

Stephen Kattner 1846

James Rohrbaugh 2255

Gallagher Memorial 2003 (3)

1.e4 e6 2.Nc3 d5 3.d4 Bb4 4.e5 c5
5.Bd2 Ne7 6.Nb5 Bxd2+ 7.Qxd2 0-0
8.c3 Nbc6 9.f4 Qb6 10.Nf3 f6 11.Nd6
Bd7 12.0-0-0 cxd4 13.cxd4 a5 14.Kb1
a4 15.Bd3 Nb4 16.Rc1 Nxd3 17.Qxd3
Nc6 18.Rc3 fxe5 19.fxe5 Rf4 20.Ng5
g6 21.Qh3 h5 22.Nxe6 Nxd4 23.Qd3
Nxe6 24.Qxg6+ Ng7 25.Rg3 Bf5+
26. Nxf5 Qxg6 (see diag. top of next
column.)
27.Ne7+!!!

Of course this is perfectly illegal,
but 27.Rxg6 Rxf5 +- is no fun.
27...Kf7 (27...Qxb1!) 28.Nxg6 Rg4
29.Rxg4 hxg4 30.Nf4 Rd8 31.Rf1 Nf5
32.Re1 d4 33.Rc7+ Ke8 34.Kc2 Rd7
35.Rc8+ Ke7 36.Ng6+ Kf7 37.e6+
Kxe6 38.Nf8+ Kd6 39.Nxd7 Kxd7

Diagram after move 26. Nxf5 Qxg6



40.Rg8 Ne3+ 41.Kd3 Nxg2 42.Rxg4
Ne1+ 43.Ke2 1-0

DeLeon's immortal game!?

Notes by NM Selby Anderson

From's Gambit A02

Ernest Templer 1727

Jose DeLeon 1651

Gallagher Memorial 2003 (4)

1.f4 e5 2.fxe5 d6 3.exd6 Bxd6 4. Nf3
g5 5.d4

After the more topical 5.g3, a good
illustration of Black's attacking play is
Pickard-Innocencio, Lone Star Open
(Dallas) 1991: 5...g4 6.Nh4 Ne7 7.d4
Ng6 8.Nxg6 hxg6 9.Qd3 Nc6 10.c3
Bf5 11.e4 Qe7 12.Bg2 0-0-0 13.0-0
Ne5! 14.Qc2? Rxh2!! 15. Kxh2 Nf3+
16.Rxf3 gxf3 17.Bxf3 Qh4+ 18.Kg1
Qxg3+ 19.Bg2 Qe1+ 20. Bf1 Rh8
21.Nd2 Qg3+ 22.Bg2 Rh1+ 0-1.
5...g4 6.Ng5!?

6.Ne5 Bxe5 =.

6...h6

6...f5 7.e4 h6 8.e5 Be7 9.Nh3 gxh3
10.Qh5+ Kf8 11.Bc4 Rh7 12.Qg6
Bb4+ 13.Ke2 Rg7 14.Bxh6 Nxh6
15.Qxh6 Qg5 16.Qxg5 Rxg5 -/+ Popp-
Heemsoth, corr. 1961/62.

7.Ne4 Nf6 8.Nxd6+ Qxd6 9.c3 Bf5
10.Nd2 Qe7 11.Nc4 Nc6 12.Bf4 0-0-0
13.Ne5 Nxe5 14.Bxe5 Rhe8 15.Qa4

Kb8 16.e3 Nd5



17.Bb5 Nxe3!

At first 17...f6 18.Bxe8 Rxe8 looks good, with a forced win if the bishop retreats. However, 19.0-0! strongly consolidates: 19...Nxe3 (19...Bd7 20.Qa5!) 20.Bxf6 Qe4 21.Rf2 +.

18.Bxe8 Rxe8 19.Kd2

Interesting is 19.Kf2: (a) 19...g3+!? 20.Kxe3 (20.Bxg3 or hxg3 gets mated after 20...Ng4+ -+) 20...f6 21.Raf1 Bd7 22.Qb4 ±; (b) 19...Nc2! 20.Rac1 f6 21. Rxc2 (21.Bf4? Qe2+ 22.Kg1 b5 23.Qa5 Be4 -+) 21...Bxc2 22.Qxc2 fxe5 23.Qe4! Qf7+ 24.Kg3 exd4 25.Qxd4 h5 =.

19...Bd7 20.Qb4 Qg5

A "quiet" move that leaves White's king pinned and wriggling, with escape attempts such as 21.Ke2 Nc2 or 21.Kd3 Bf5+ being unsatisfactory.

21.Bxc7+ Ka8 22.Qc5 Nf1+ 23.Kd3 Qd2+ 24.Kc4 Ne3+ 25.Kb3 Qc2+ (26...Qa4#) 0-1

Sicilian Defense B31

John Hendrick 2117

Stephen Kattner 1846

Gallagher Memorial 2003 (4)

1.e4 c5 2.Nf3 Nc6 3.Bb5 g6 4.0-0 Bg7 5.Re1 e5 6.c3 Nge7 7.Na3

7.d4 exd4 8.cxd4 cxd4 9.Bf4 a6! (7... 0-0 8.Bd6) 10.Bc4 d6 11.Ng5 0-0 12.Qb3 d5 13.Bxd5 Nxd5 14.exd5 Na5 15.Qf3! Nc4 16.Nd2 =/_ NCO.

7...0-0 8.Nc2 d5 9.exd5 (9.d3) Qxd5 10.Ne3 Qd6 11.Nc4 Qc7 12.Qe2 Bg4 13.h3 Bxf3 14.Qxf3 a6 15.Bxc6 Nxc6 16.d3 Rad8 17.Nd2 f5 18.Nb3 b6

19.a4 Rd6 20.a5 Nxa5 21.Nxa5 bxa5 22.Qe2 Rfd8

A strong alternative is 22...f4, keeping White's bishop out of play to dominate the first rank, e.g. 23.Qe4 Rfd8 24. Qc4+ Kh8 25.Rd1 Qd7! 26.Qxc5? Rxd3 27.Rf1 Rd1 28.Qc4 Rxf1+ 29.Qxf1 Qd1 and White remains tied up. Somewhat better is 26.b3 Rxd3 27.Rxd3 Qxd3 28. Ba3 Qxc4 29.bxc4 e4 30.Bxc5 Bxc3 31. Rc1 Bb4, but Black is still on top.



23.f4 Re6 24.fxe5 Bxe5 25.Kh1 Rde8 26.Qf3 Bxc3 27.Rxe6 Rxe6 28.Bf4 Be5 29.Qd5

After the game Hendrick suggested 29.Re1 as a winning try, but 29...Kf7 30. Qd5 Kf6 holds things together.

29...Qd6 30.Qxd6 Bxd6 31.Bxd6 Rxd6 32.Rxa5 Rxd3 33.Rxc5

1/2-1/2

Notes by NM Selby Anderson

Dutch Leningrad A85

Iva Davis 1666

Anthony Guerra 1628

Gallagher Memorial 2003 (4)

1.d4 e6 2.c4 f5 3.Nc3 Nf6 4.g3 Bb4 5.Bd2 Nc6 6.e3 Bxc3?!

Sometimes Black does this without an a3 prompt, but only when exchanging doubles the c-pawn. Better seems 6...e5 7.Nge2 0-0 8.Bg2 d6.

7.Bxc3 b6 8.Bg2 Bb7 9.f3 0-0 10. Nh3 Ba6 11.Qa4 Qe8 12.b4 Bb7 13.Rc1 a5

14.b5 Ne7 15.0-0 d5

Or 15...d6 16.c5 Bd5 17.Nf2 e2-e4 presenting fresh danger to the bishop.

16.c5 Qe8 17.c6 Bc8 18.Bb4 h6 19.Nf2 Rf7 20.Bxe7 Rxe7 21.Nd3 Nh7 22.Ne5



The fact that Black is effectively a rook and bishop down is never more evident than here. If White could just evaporate the kingside pawns she could cash in easily, but that is not the case.

22...g5 23.e4 Nf8 24.exd5 exd5 25. f4 Be6 26.Rc2 Ng6 27.Re2 g4 28. Rfe1 Nxe5 29.Rxe5 Rd8

White has traded advantages, letting Black's queenside pieces out in return for a dominating position on the e-file. Now she begins a little combination.

30.Qb3 Qf7



31.Qe3 Rd6 32.Bxd5! Rxd5 33. Rxd5 Bxd5 34.Qxe7 Be4 35.Qxf7+ Kxf7 36.Rxe4! fxe4 37.Kf2 Ke6 38.Ke2 Kd6 39.Kxe3 Kd5 40.f5 a4 41.a3 h5 42.f6 Ke6 43.d5+ Kxf6 44.d6

1-0

Tarrant County Championship

Tom Kusnierz

The 1st Annual Tarrant County Championship was won by Aurelio Gonzalez with a 3.5-0.5 score on November 8, 2003. The event was sponsored by the Watauga Chess Club (<http://www.geocities.com/wataugachess>) and was the first of what the club intends to be an annual event. A total of 31 players participated in the tournament. The event featured several upsets including Clayton Swafford's (1647) defeat of Kent Gordon (2008) in the first round, Tom Kusnierz's (1856) win over Kevin Fleming (2108) in the second round, and Paul Huspeni's (1442) victory over Stephanie Ballom (1706) in the third round. Gonzalez (1895) appeared to stumble in the second round against Carmen Chairez (1808) when he dropped a pawn during the opening, but he recovered nicely and pulled out a draw. A win in the third round against Marvin Bolden (1727) set the stage for a final round match up between Gonzalez and Jim Hollingsworth (1862). Hollingsworth entered the final round with a 3-0 score with victories over Chase Watters (1588), Swafford, and Kusnierz, but Gonzalez played a strong game to obtain the victory and the championship trophy. The open section also featured two of the top 100 rated US Women players

with Stephanie Ballom (1706), age 14, and Courtney Jamison (1724), age 11. Second place was shared by Fleming and Hollingsworth with 3.0-1.0 scores. First Class B went to Jamison and second Class B went to Swafford. First Class C went to Watters and second Class C went to Huspeni.

The reserve section (U1400) was won by Jay Arendt (1273) with a perfect 4-0 score. Finishing in a 3-way tie for 2nd with 3-1 scores were Jeffrey A. Sproison (1137), Wesley G. Anderson (1100), and Justin McCaghren (1082). Anderson and McCaghren also shared the top Class E prize. First class D was claimed by Larry Gilbert (1357). First unrated went to Ryan Bartholomee and second unrated went to Douglas Cherry.

The tournament was directed by Tom Crane, the Watauga Chess Club's president. The next tournament sponsored by the club will be on January 17, 2004. The entire portion of the entry fees that would normally go to the prize fund will be donated to the USCF to assist the organization in overcoming its financial difficulties. Additional details can be found on the club's website.

Notes by Tom Kusnierz

Sicilian B50
Carmen Chairez 1808
Aurelio Gonzalez 1895
Tarrant County Chp. (2),

1.e4 c5 2.Nf3 d6 3.d3 e5 4.g3 Be7
 5.Bg2 f5 6.exf5 Bxf5 7.Nxe5 Nd7

This gives move gives White a clear advantage; 7...dxe5 8.Bxb7 Nd7 9.Bxa8 Qxa8 with a strong game for Black.

8.Qf3 Nxe5 9.Qxf5 Qc7 10.Nc3 Nf6
 11.Qe6 a6?

11...Nc6. [Sarkisian]

12.0-0 h6 13.Re1

13.f4.

13...Rf8



14.f4

Piece play is even stronger here: 14.Bf4 (threatening to win the d6 pawn) 14...Qd7 15.Qb3! (15.Qxd7+ Nfxd7 16.Bxe5 dxe5 17.f4 is great for

White as well) 15...Ng6 16.Bxb7 Ra7 (16...Rb8 17.Bc6) 17.Bd5 Nxd5 (17...Nxf4? 18.Qb8+ Qd8 19.Bc6+ Rd7 20.Bxd7+ Nxd7 21.Qxd8+ Kxd8 22.gxf4+-) 18.Nxd5. Black is down in material and his king is a target. [Sarkisian]

14...Nc6 15.Be4?

15.Nd5 Nxd5 16.Bxd5 Nd4 17.Qe4.

15...Nd4 16.Qc4 Kd8 17.Nd5 Nxd5 18.Bxd5 Bf6 19.a4 Rb8 20.a5 g5 21.c3

This gives the initiative to Black. 21.Ra4.

21...Nc2 22.Bd2 Nxa1 23.Rxa1 Re8 24.Bf3 Qg7 25.Qd5 Kc7 26.Ra3 gxf4 27.Bxf4 Be5 28.Rb3 Kc8 29.Bd2 Rf8 30.Qe6+ 1/2-1/2

Slav D15

Tom Kusnierz 1856

Kevin Fleming 2109

Tarrant County Chp. (2)

1.Nf3 d5 2.d4 Nf6 3.c4 c6 4.Nc3 Bf5
5.Qb3 Qb6 6.Qxb6 axb6 7.cxd5 cxd5
8.Bg5 e6 9.Nh4

9.Bxf6 gxf6 10.Rc1 Nc6 11.e3 Bd6
12.Bb5.
9...Ne4 10.Nxe4 Bxe4 11.f3



11...Bg6

11...h6 12.Bd2 Bh7.

12.Nxg6 hxg6 13.Bd2 Bd6 14.h3 Nc6
15.e3 Ke7 16.Kf2 Rhc8 17.Bd3 Bb4
18.Ke2 Bxd2 19.Kxd2 Nb4 20.a3
Nxd3 21.Kxd3 Rc6 22.Rhc1 Rac8
23.Rc3 Rxc3+ 24.bxc3 Kd6 25.Rb1
Kc6 26.c4 dxc4+ 27.Kxc4 Ra8
28.Rb3

28.Re1 b5+ 29.Kb4+ Kb6 30.Rc3
28...b5+ 29.Kd3 Ra4 At this point
white had less than 30 seconds to
Black's 14 minutes.

30.Kc2 Kb6 31.Kd3 Ra8 31...Kc6
32.e4 Rd8 33.a4 Kc6 34.axb5+ Kb6
35.Kc4 Ra8 36.d5 exd5+ 37.exd5
Kc7 38.Kb4 Ra2 39.Rc3+ Kd6 40.g4
Rh2 41.f4

White had 5 seconds to Black's 11
minutes.

41...Rf2 42.b6 Kxd5 43.Rc7 Rxf4+
44.Kb5 Rf1 45.Rxb7 Rb1+

Neither player kept notation at this
point. Clearly Black can force a draw
here if he wants but in the game Black

tried to win and ended up losing.

1-0

Notes by Tom Kusnierz

King's Indian: Four Pawns E76

Jim Hollingsworth 1862

Tom Kusnierz 1856

Tarrant County Chp. (3)

1.d4 Nf6 2.e4 g6 3.Nc3 Bg7 4.e4 d6
5.f4 0-0 6.e5 dxe5 7.fxe5 Ne8 8.Nf3 f6
[8...c5] 9.Be3 Nc6



9...fxe5 10.dxe5 Qxd1+ 11.Rxd1
Nc6.

10.e6 f5 11.d5 Ne5 12.Nxe5 Bxe5
13.Bd4

13.Bh6 Ng7 14.Qd2.

13...Bxd4 14.Qxd4 Bxe6 15.0-0 Bf7
16.h4 Nf6 17.Be2 c6 18.g4 ffg4
19.Bxg4 exd5 20.Nxd5 Bxd5 21.exd5
Nxg4 22.Qxg4 Qc8+ 23.Qxc8 Raxc8+
24.Kb1 Rfd8 24...Rf5 25.h5 Rc5
26.hxg6 hxg6 27.Rde1 Rc7 27...Rd7
28.Rhg1 Rd6 29.Re5 Kf7 30.Rf1+
Kg7 31.b4 Rcd7 32.Rfe1 Kf6
33.R5e4 Rxd5 34.Re6+ Kf7 35.Kc2
Rd2+ 36.Kb3 b5 37.R6e3 R7d3+
38.Rxd3 Rxd3+ 39.Kc2 Rd4 40.Kc3
Rc4+ 41.Kb3 g5 41...Rf4 42.Re5 Kf6
43.Rxb5 Rc7 44.Rd5 e5 45.Rd1 e4
46.Rf1+ Ke5 47.Rg1 Kf4 48.Rf1+
Ke3 49.Re1+ Kf4 50.Rf1+ Ke3
51.Re1+ Kd3

Black lost on time at this point. I
had allowed myself to get into severe
time pressure and the last 15 minutes
were all played on the 5 second delay.

Unfortunately I had resigned myself to
a draw by perpetual check and when
my opponent offered me a draw on
move 51 I had 6 seconds left.
Ironically it was at that moment I woke
up and realized I had an easy win on
my hands but that realization cost me
the 6 seconds and the game! 51...Kf3
52.Rf1+ Ke2 53.Rg1 e3 54.Rxg5 Ke1
55.Re5 e2 56.Kb2 Rf7 57.Kc2 Kf1
58.Kd2 Rd7+
52.Rd1+ Ke2

1-0

Notes by Tom Kusnierz

Alekhine Defense B02

Jim Hollingsworth 1862

Clayton Swafford 1647

Tarrant County Chp. (2)

1.e4 Nf6 2.e5 Nd5 3.Nf3 d6 4.exd6
exd6 5.Bc4 Nb6 6.Qe2+ Be7 7.Bb3 0-
0 8.0-0 Re8 9.d4 Bg4 10.h3 Bf6
11.Qd3 Bh5 12.c3 Bg6 13.Qd1 e5
14.dxc5 dxc5 15.Qxd8 Rxd8 16.Be3
c4?

16...N8d7 17.Nbd2 a5 18.a4 Bd3.
17.Bxb6 Rd6 18.Be7 Rc6 19.Bxc4
19.Bxb8 Rxb8 20.Ba4 b5 21.Bd1.
19...Rxc4 20.Re1 Nd7 21.Bg3 Ne5
22.Na3 Re4 23.Rxe4 Bxe4



24.Re1 Bxf3 25.gxf3 Nd3 26.Re2 h5
27.Nc4 b5 28.Nd6 a6 29.Ne4 Be5
30.b3 Nf4 31.Bxf4 Bxf4 32.Rc2 Rc8
33.c4 h4 34.Nc3 Kf8 35.Nd5 Be5
36.Kf1 Rc6 37.a4 bxa4 38.bxa4 Ke8
39.f4 Bd4 40.Ke2 Kd7 41.Kd3

41.Rd2 Ba1 42.Nb4+ Rd6 43.Nxa6

41...Bf6 42.f5 g6 43.Ke4 Be7 44.f3 g5
45.Kd3 Rc5 46.Rb2 Bd8 47.Rb7+
Ke8 48.Kc3 a5 49.Rb5 Rc6 50.Kd3

Black lost on time.

1-0

Notes by Tom Kusnierz

Ponsiani Opening C44

Aurelio Gonzalez 1895

Wallace Brady 1642

Tarrant County Chp. (1)

1.e4 e5 2.Nf3 Nf6 3.d3 Nc6 4.h3 d5
5.exd5 Qxd5 6.Bg5 Be7 7.Nc3 Qe5
8.Be2 Bf5 9.0-0 h6 10.Be3 Qb4
11.Rb1 0-0 12.a3 Qd6 13.b4 a6
14.Nd2 b5 15.Bf3 Rad8 16.Be5



16...Qd7 16...Qe6 17.Bxc6 Qxc6
18.Bxe7 Qxc3 19.Bxd8 Rxd8 20.Rb3
Qd4 21.Nf3 Qd6 22.Qe2 e4 23.dxe4
Nxe4 24.Rd3 Qf6 25.Rxd8+ Qxd8
26.Qe3 Qe8 27.Nd4 Bg6 28.Re1 Nd6
29.Nc6 Nf5 30.Qd2 Qf8 31.Qd7 Nd6
32.Ne7+ Kh7 33.Nxg6 fxe6 34.Qxc7
Qf6 35.Qe7 Qd4 36.Qe5 Qd2 1-0

Notes by NM Drew Sarkisian

Sicilian B33

Aurelio Gonzalez 1895

Jim Hollingsworth 1862

Tarrant County Chp. (4)

1.e4 e5 2.Nf3 Nc6 3.d4 cxd4 4.Nxd4
Nf6 5.Nc3 e5 6.Ndb5 d6 7.Bg5 a6
8.Bxf6 gxf6 9.Na3 Be6 10.Nd5 Bxd5

I don't like giving up the two bish-

ops so easily; then again, I don't play
the Sicilian Pelikan. In GM circles,
Black's been doing just fine...which is
why we see so many games with White
playing 2.c3 or an early Bb5.

11.exd5 Ne7 12.Nc4 Bg7 13.Be2 0-0
14.0-0 Kh8 15.Kh1 f5 16.Qd3 b5
17.Ne3 e4 18.Qb3 Rb8 19.Nd1 f4



20.c4?

Giving up any chance to oppose
the domination of the dark squares by
the Bg7. 20.c3, covering d4 and blunting
the Black bishop, is better.

20...bxc4?!

Black must take advantage of his
more active pieces with 20...Nf5!
21.Qh3 (21.Qc2? Nd4 22.Qd2 f3
23.gxf3 exf3 24.Bd3 Qh4 25.Rg1 Be5-
+) 21...Nd4 22.Bh5 bxc4 23.Nc3 f5,
and Black has a large advantage.

21.Qxc4 f5 22.Rb1 Rf6

An interesting imbalance arises
after 22...Rc8!? 23.Qa4 Nxd5 24.Bxa6
Rb8.

**23.f3! Rc8 24.Qa4 Nxd5 25.fxe4 Nb6
26.Qb4 fxe4**

The interesting try 26...a5 doesn't
seem to yield any advantage after the
sober 27.Qd4! (27.Qxa5 fxe4 appears a
bit better for Black).



USA Chess, Inc.

USA Chess, Inc. is the largest and premier chess camp organizer for children in the United States. Our staff, headed by nationally renowned children's chess coach National Master Nouredine Ziane, is comprised of the best children's chess instructors in North America.

UPCOMING EVENTS!

March 15-18, 2004 • USA Chess, Inc. Chess Center (Dallas)
 June 14 - 18, 2004 • St. John's School (Houston)
 June 21 - 25, 2004 • The Hockaday School (Dallas)
 June 21 - 25, 2004 • The John Cooper School (The Woodlands)
 July 12 - 16, 2004 • The Hockaday School (Dallas)
 July 19 - 23, 2004 • St. John's School (Houston)
 July 19 - 23, 2004 • St. Mary's Hall (San Antonio)

USA Chess, Inc. is a multi-faceted company offering national chess activities for children including a national summer chess camp tour, scholastic tournaments, private and group lessons.

Dallas Office:
13500 Midway Road, Suite 400
Dallas, TX 75244

Houston Office:
3303 S. Rice, Suite 209
Houston, TX 77056

972.233.9999

www.chesscamp.com

888.65.CHESS

27.Qxe4 d5 28.Qf3 a5

Black should try to get his knight back into the game with 28...Nc4 29.Bxc4 dxc4 though Black's four(!) isolated pawns make an ugly impression.

29.Nc3 Rc5?

It's difficult to suggest good alternatives: maybe 29...Qe7 30.Ba6 Rd8 31.Rbe1 Qb4

30.Bd3 Ne4

Bad moves often come in bunches. 30...Qg8!?

31.Bxc4 Rxc4

An unfortunate result of Black's 29th move; 31...dxc4 32.Ne4+-

32.Nxd5 Rg6 33.Nxf4 Rf6 34.Rbd1 Qb8 35.g3 Bh6

35...Rc2 36.Rd7 doesn't help Black (White threatens 37.Rxg7+ followed by 38.Nh5+). 36...Rc7 37.Rd5+-

36.Qd5 Rc8 37.Ne6 Rxf1+ 38.Rxf1 Qxb2 39.Qd7

There's always hope that your opponent may do something silly like 39.Qxa5?? Qb7+ 40.Kg1 Be3+ 41.Rf2 Rc1+ mating.

39...Qc2 40.Qd4+ Kg8 41.Nd8 Qxa2??

Setting an trap, which doesn't work (or simply hanging a rook). Black needed to take his chances in the ending with 41...Qc4 42.Qxc4+ Rxc4

42.Qg4+ Bg7 43.Qd7!

White may have been concerned about a possible perpetual check after 43.Qxc8 Qd5+ 44.Kg1 Bd4+ 45.Rf2 Bxf2+ 46.Kxf2. Instead, the move played keeps all of White's options open, without jeopardizing the win of material.

43...h6 44.Ne6 Qb2 45.Qxc8+ Kh7 46.Qd7 Qe5 47.Qxg7+ Qxg7 48.Nxg7 Kxg7 49.Ra1

1-0

**Southwest Open
Houston, TX – Aug 29-Sept.1
Open Section**

name	rating	1	2	3	4	5	6	7	total
1 M. Panchanathan	2465	+24	+6	+4	+2	+3	=5	+7	6.5
2 Amon Simutowe	2403	+41	+22	+5	-1	+25	+8	+4	6.0
3 Daniel Fernandez	2298	+54	=19	+13	+23	-1	+20	+14	5.5
4 Dennis Rylander	2329	+12	+46	-1	+38	+6	+17	-2	5.0
5 Mark Ginsburg	2425	+34	+16	-2	+10	+13	=1	H	5.0
6 Drew Sarkisian	2168	+26	-1	+46	+11	-4	+30	+18	5.0
7 Mark Diesien	2472	+17	-13	+30	+16	=8	+15	-1	4.5
8 Nick Schoonmaker	2202	+27	=20	+37	+36	=7	-2	=9	4.5
9 Roberto Rodriguez	2115	=30	+28	+19	-20	+37	=23	=8	4.5
10 James Lank	2118	=37	+47	=15	-5	+44	=21	+23	4.5
11 Xi Zhang	1894	-23	+42	+28	-6	+38	+25	=15	4.5
12 Lorenzo Gaskill	2012	-4	+14	-38	H	+46	+37	+21	4.5
13 Larry Moss	2202	+50	+7	-3	+22	-5	+29	U	4.0
14 Jose Silva	2230	-22	-12	+35	+32	+43	+16	-3	4.0
15 James Rohrbaugh	2252	H	+29	=10	+39	=20	-7	=11	4.0
16 Mitchell Vergara	2105	+33	-5	+26	-7	+45	-14	+30	4.0
17 Curtis Brooks	1981	-7	+18	+50	+21	+36	-4	U	4.0
18 Andrew Soloman	1744	=48	-14	-31	+24	+39	+34	-6	4.0
19 Andres Suarez	2093	+31	=3	-9	-37	+26	=38	+33	4.0
20 Babakouly Annakov	2539	+43	=8	=21	+9	=15	-3	U	3.5
21 Mark Dejmeck	2169	H	+44	=20	-17	+22	-10	-12	3.5
22 Bill Wheeler	2072	+14	-2	+32	-13	=21	=28	+37	3.5
23 Lar Englebretson	2204	+11	+45	H	-3	H	=9	-10	3.5
24 William Moore	2059	-1	=27	H	-18	+47	+31	=25	3.5
25 Clarence Yeung	2200	+53	H	=39	+43	-2	-11	=24	3.5
26 Bradley Sawyer	1916	-6	+34	-14	=47	-19	+46	+39	3.5
27 Michael Simpson	1977	-8	=24	=40	=46	+42	=39	+38	3.5
28 Stephen Foster	1712	B	-9	-11	-34	X50	=22	+41	3.5
29 David Phillips	2003	H	-15	+51	+31	=30	-13	H	3.5
30 Matthew Willis	1830	=9	+48	-7	+40	=29	-6	-16	3.0
31 Luis Castillo	unr	-19	+54	=18	-29	+41	-24	=34	3.0
32 Eric Dong	1868	+38	-36	-22	-14	+35	=52	H	3.0
33 Brandon Moore	1645	-16	B	-43	+50	-40	+45	-19	3.0
34 Barry Endsley	2042	-5	-26	+53	+28	H	-18	=31	3.0
35 Tim Brookshear	2000	-36	-38	-14	+53	-32	+42	+47	3.0
36 William Reuter	2252	+35	+32	H	-8	-17	U	H	3.0
37 William Rhee	1895	=10	+40	-8	+19	-9	-12	-22	2.5
38 John Hendrick	2106	-32	+35	+12	-4	-11	=19	-27	2.5
39 Andrew Smith	2079	=49	+51	=25	-15	-18	=27	-26	2.5
40 Fred King	2125	=51	-37	+27	-30	+33	U	U	2.5
41 Norman James	2028	-2	H	=44	H	-31	+47	-28	2.5
42 Pedro Gonzalez	unr	-45	-11	B	-44	-27	-35	+46	2.0
43 Mike Sheaf	2061	-20	+53	+33	-25	-14	U	U	2.0
44 Steven Young	1910	H	-21	=41	+42	-10	U	U	2.0
45 Peter Yeh	2030	+42	-23	H	H	-16	-33	U	2.0
46 Frank Lawrence	1264	B	-4	-6	=27	-12	-26	-42	1.5
47 John Masters	1700	H	-10	H	=26	-24	-41	-35	1.5
48 Albert Yeh	2108	=18	-30	U	U	H	U	H	1.5
49 Raymundo Garza	1580	=39	H	U	U	U	U	H	1.5
50 Ayokun Aladeselu	1880	-13	B	-17	-33	F28	U	U	1.0
51 Robert Chalker	1900	=40	-39	-29	U	U	U	U	0.5
52 Mark Dixon	1947	U	U	U	U	U	=32	U	0.5
53 Frank Brack	1955	-25	-43	-34	-35	U	U	U	0.0
54 Paul Haney	1939	-3	-31	U	U	U	U	U	0.0

March 13-14, 2004

Texas Team Championship

4SS, 30/90, SD/1.

TNI Building

4410 Medical Dr. (1st floor conference),
San Antonio, TX

Open to four-player teams avg. U2200
based on Dec. 2003 rating list.

One alternate allowed, must be lowest rated.

EF: \$100/team if rec'd by 3/11, \$125 site.

TCA memb. required (\$10 adult, \$7.50 U19, \$1
jr. tmt.),

o.s.a. \$\$(\$1,000 b/12 teams): \$450+T, \$250;
U1900 team \$200+T, \$100.

Reg. 11 a.m.-noon, Rds. 12:30-6, 9:30-3.

Ent: SACC, POB 501, Helotes, TX 78023.

Info: www.texaschess.org; gwren@satx.rr.com,
210-695-2324 or -6149.

Reserve Section

name	rating	1	2	3	4	5	6	7	total
1 Aurelio Gonzalez	1916	+105	+29	+3	+18	+16	=2	=4	6.0
2 Keith Cryan	1656	+91	=9	+40	+82	+8	=1	+7	6.0
3 Mark McCue	1829	+106	+38	-1	+15	+19	=20	+21	5.5
4 John Crawford	1974	=45	+72	+51	=25	+52	+10	=1	5.5
5 Wolfgang Kern	1685	+81	+30	=8	-31	+61	+49	+46	5.5
6 Vicente Flores	1781	+73	+23	+60	-16	+41	+31	11	5.5
7 Clemente Rendon	1879	H	+45	=19	+22	+13	+9	-2	5.0
8 Rickie Wallace	1910	+64	+56	=5	+48	-2	=11	+26	5.0
9 Ming Chin	1810	+85	=2	=17	+66	+28	-7	+25	5.0
10 Nate Findley	1846	-39	+46	+96	+53	+25	=4	+27	5.0
11 Anthony Guerra	1650	=17	-61	+88	+34	+74	=8	+29	5.0
12 Mark Gracey	1804	+47	+66	=28	+39	=31	=16	H	5.0
13 Gilbert Davila	1724	+67	-60	+76	+79	-7	+39	+35	5.0
14 Michael Jennings	1836	+57	-28	=47	+45	+48	+17	H	5.0
15 Stormy Newton r/e	1627	+84	-82	+87	-3	+73	+52	+33	5.0
16 Joseph Drake	1939	+44	+95	+20	+6	-1	=12	-5	4.5
17 Philip Nutzman	unr	=11	+24	=9	=29	+32	-14	+41	4.5
18 David Wisecup	1604	+79	+21	+41	-1	-43	=22	+48	4.5
19 Michael Cox	1636	+100	=43	=7	+32	-3	=40	+49	4.5
20 Jonathan Allen	1908	+83	+27	-16	+61	+26	=3	U	4.5
21 Kevin Wang	1714	+77	-18	H	+62	+78	+43	-3	4.5
22 Arnold Liao	1703	-87	-39	+67	-7	+69	=18	+42	4.5
23 Francisco Hernaiz	1604	+101	-6	+89	=35	-33	X79	+40	4.5
24 Julius Cromartie	1658	=88	-17	-78	+84	+75	+62	+58	4.5
25 Peter Tu	1693	+46	=62	+43	=4	-10	+57	-9	4.0
26 Carmen Chairez	1728	=61	+68	+99	=28	-20	+44	-8	4.0
27 Antonia Oliva	1700	+76	-20	=55	+47	+39	+59	-10	4.0
28 Robert Ladymon	1619	+98	+14	=12	=26	-9	=30	H	4.0
29 Stephen Guerra	1778	+75	-1	+64	=17	H	+60	-11	4.0
30 Mike Machado	1844	B	-5	+38	-41	+76	=28	=37	4.0
31 Robert Clark	1968	H	+50	+33	+5	=12	-6	U	4.0
32 Ernesto Rodriguez	1854	-51	+65	+57	-19	-17	+69	+46	4.0
33 William Manthei	1800	=68	+78	-31	+75	+23	H	-15	4.0
34 Juan Lopez	1335	-95	=44	+70	-11	=50	+66	+60	4.0
35 Walt Wright	1827	=76	=58	+73	=23	H	+42	-13	4.0
36 William Gibson	1806	=78	=54	=37	-42	=55	H	+63	4.0
37 Gary Carlson	1629	-99	+71	=36	-74	+47	+61	=30	4.0
38 Julie O'Neill	1697	+107	-3	-30	-77	+85	+86	+64	4.0
39 Jaime Flores	1509	+10	+22	=48	-12	=27	-13	H	3.5
40 Steve Rydberg	1800	+97	+63	-18	+30	-6	=46	-17	3.5
41 Stephen Rugh	1647	+97	+63	-18	+30	-6	=46	-17	3.5
42 Steven Watson	1542	-82	=84	+72	+36	+56	-35	-22	3.5
43 Jason Howell	1969	+96	=19	-25	+60	+18	-21	U	3.5
44 Steven Morgan	1613	-16	=34	+68	=40	+67	-26	=54	3.5
45 Leroy Jasso	1581	=4	-7	+84	-14	-62	+75	+73	3.5
46 Adam Alonzo	1242	-25	-10	+93	+64	+66	=41	-32	3.5
47 Jesus Gallegos	1404	-12	+103	+14	-27	-37	+85	+81	3.5
48 William Fink	1643	+86	+89	=39	-8	-14	X78	-18	3.5
49 S. George r/e	1868	=58	=76	+62	+80	H	-5	-19	3.5
50 Kenneth Baker	1544	=104	-31	-75	+101	=34	+65	=53	3.5
51 Neph Diaz	1512	+32	+53	-4	-52	-40	+90	H	3.5
52 Victor Flores	1735	-63	+97	+69	+51	-4	-15	H	3.5
53 Leigh Harrington	1695	+65	-51	+92	-10	-63	+77	=50	3.5
54 Frank Roberts	1565	=94	=36	-95	-65	+100	+92	=44	3.5
55 Sam Gutierrez	1428	-40	+91	=27	-56	-36	+97	+74	3.5
56 Timothy Banks	1752	+71	-8	=83	+55	-42	+63	U	3.5
57 Steven Horn	1494	-14	+98	-32	+102	+80	-25	H	3.5
58 Ricardo Araki	1518	=49	=35	H	H	=79	+74	-24	3.5
59 Steve Castilleja	1589	-89	+86	-79	+87	+65	-27	H	3.5
60 Yi Zhang	1602	+90	+13	-6	-43	+77	-29	-34	3.0
61 Anrew Ortiz	1327	=26	+11	+94	-2	-5	-37	H	3.0
62 James Kerens	1364	+93	-25	-49	-21	+43	-24	-70	3.0
63 Angel Bohannon	1347	+52	-41	-80	+98	+53	-56	-36	3.0
64 Iva Davis	1553	-89	-81	-29	+46	+102	+67	-38	3.0
65 Willie Scott	1268	-53	-32	+100	+54	-59	-50	+84	3.0
66 John Schulke	1612	+103	-12	+102	-9	-46	-34	+88	3.0
67 Abhishek Mallela	1334	-13	+93	-22	+89	-44	-64	+92	3.0
68 Ade Kujimiyo	1400	=33	-26	-44	-90	+102	=84	+86	3.0
69 Michael Labelle	1377	H	=80	-52	+88	-22	-32	+91	3.0
70 James Pemberton	1520	H	-94	-34	+103	-90	=73	=62	3.0
71 Keith Scott	1334	-56	-37	-74	-86	BX100	+90	3.0	
72 Dan Liu	1526	H	-4	-42	-85	+89	+87	H	3.0
73 Carlos Ortiz	1364	-6	+101	-35	+91	-15	=70	-45	2.5
74 Quayle Johnson	1293	-27	H	+71	+37	-11	-58	-55	2.5
75 Tim Shipper	1383	-29	H	+50	-33	-24	-45	+97	2.5
76 Doyle Lobaugh r/e	1440	=35	=49	-13	+92	-30	=80	U	2.5
77 Tony Olvera	1328	-21	-79	+86	+39	-60	-53	H	2.5
78 L. Roberman	1439	=36	-33	+24	+94	-21	F48	U	2.5
79 Robert Clarke	Unr.	1510	+77	+59	-13	=58	F23	U	2.5
80 Duane Solley	1705	H	=69	+63	-49	-57	=76	U	2.5
81 William Riley	1203	-5	-64	=85	H	+88	H	-47	2.5
82 C. Dooley	1919	+42	+15	H	-2	U	U	U	2.5
83 Marika Litras	1548	-20	+85	=56	H	H	U	U	2.5
84 D. Christiansen	1092	-15	=42	-45	-24	+93	=68	-65	2.0
85 Ted Ingram	1147	-9	-83	=81	+72	-38	-47	=87	2.0
86 Dylan Smith	1198	-48	-59	-77	+71	+91	*38	-68	2.0
87 A. Sathiyaraj r/e	1283	-22	+90	-15	-59	H	-72	=85	2.0
88 Thomas Crane	1131	=24	H	-11	-69	-81	+98	-66	2.0
89 Michael Chaison	unr	+59	-48	-23	-67	-72	+102	U	2.0
90 Jianrong Wang	unr	-60	-87	H	+68	=70	-51	-71	2.0
91 Ted Shipper	1051	-2	-55	B	-73	-86	+103	-69	2.0
92 Tyler Williams	1173	H	H	-53	-76	+98	-54	-67	2.0
93 Chris Blair	unr	-62	-67	-46	=97	-84	=101	B	2.0
94 Roger Young	1929	=54	+70	-61	-78	U	U	U	2.0
95 Wayne Kruemcke	1776	+34	-16	+54	U	U	U	U	2.0
96 Justin Polk	1552	-43	+100	-10	H	U	U	H	2.0
97 Roxana Ortiz	1203	-41	-52	-98	=98	+101	-55	-75	1.5
98 Thomas Madis	1027	-28	-57	+97	-63	-92	-88	H	1.5
99 Mark Dixon	1947	+37	=40	+26	U	U	U	U	1.5
100 Aidin Ashoori	1158	-19	-96	-65	B	-54	F71	U	1.0
101 Chris Gaddis	551	-23	-73	H	-50	-97	=93	U	1.0
102 Gideon Cheshire	1169	H	H	-66	-57	-64	-89	U	1.0
103 Austin Gaddis	988	-66	-47	H	-70	-68	-91	U	0.5
104 Sathiyaraj George	1868	=50	U	U	U	U	U	U	0.5
105 Stormy Newton	1627	-1	U	U	U	U	U	U	0.0
106 Doyle Lobaugh	1440	-3	U	U	U	U	U	U	0.0
107 Ajith Sathiyaraj	1283	-38	U	U	U	U	U	U	0.0

Moving? Send us your new address!

Bulk mail does not get forwarded.

Texas Class Championships
Dallas TX - Nov 14-16
Championship

name	rating	1	2	3	4	5	total
1 M. Panchanathan	2467	+14	+9	+6	+10	=3	4.5
2 Amon Simutowe	2432	+12	-5	+19	+8	+6	4.0
3 Marcin Kaminski	2465	-5	+21	+13	+18	=1	3.5
4 Keith Hayward	2283	-18	+22	11	+9	+10	3.5
5 Michal Kujovic	2225	+3	+2	=10	-6	+11	3.5
6 R. Milovanovic	2434	+15	+8	-1	+5	-2	3.0
7 Andrew Whatley	2340	-13	+12	H	H	+16	3.0
8 Mikhail Langer	2277	+16	-6	+14	-2	+18	3.0
9 Lester Van Meter	2213	+20	-1	X	-4	+19	3.0
10 John Cole	2290	B	+13	=5	-1	-4	2.5
11 Gary Simms	2209	+17	-14	=16	+20	-5	2.5
12 M. Movsisyan	2178	-2	-7	+22	=19	+20	2.5
13 Alexander Chua	2093	+7	-10	-3	=17	+21	2.5
14 Mark Dejmeck	2154	-1	+11	-8	=15	=17	2.0
15 D. Datta	2038	-6	+17	-20	=14	H	2.0
16 Curtis Brooks	2003	-8	=20	=11	+22	-7	2.0
17 Bradley Sawyer	1915	-11	-15	B	=13	=14	2.0
18 Karl Disher	1884	+4	-19	+21	-3	-8	2.0
19 Mark Poltorak	1808	=21	+18	-2	=12	-9	2.0
20 Mbugua Githoro	1982	-6	=16	+15	-11	-12	1.5
21 Courtney Jamison	1724	=19	-3	-18	B	-13	1.5
22 Alex Echeverry	2019	H	-4	-12	-16	U	0.5

U2000

name	rating	1	2	3	4	5	total
1 Joseph Drake	1912	+17	+4	+5	+3	=2	4.5
2 Clemente Rendon	1879	+16	=3	+18	+5	=1	4.0
3 Anh Tuan Nguyen	1925	+11	=2	+9	-1	+6	3.5
4 Sam Copeland	1850	+10	-1	=12	+13	+9	3.5
5 Aurelio Gonzalez	1895	+15	+8	-1	-2	+11	3.0
6 Rodney Thomas	1847	=12	+14	H	+16	-3	3.0
7 Timothy Banks	1904	=14	=12	=13	=11	=8	2.5
8 Mark McCue	1829	+13	-5	=17	=12	=7	2.5
9 Kelly Clover	1819	+18	=19	-3	+17	-4	2.5
10 Anjali Datta	1665	-4	=17	=14	X18	H	2.5
11 Alexander Shaffer	1993	-3	=16	+19	=7	-5	2.0
12 David Philips	1985	=6	=7	=4	=8	U	2.0
13 Jonathan Allen	1908	-8	+15	=7	-4	=14	2.0
14 Daniel Nelson	1825	=7	-6	=10	=15	=13	2.0
15 Carmen Chairez	1824	-5	-13	B	=14	=17	2.0
16 Richard Petty	1987	-2	=11	B	-6	U	1.5
17 George Culler	1847	-1	=10	=8	-9	=15	1.5
18 Jason Howell	1969	-9	B	-2	F10	U	1.0
19 Steven Young	1900	H	=9	-11	U	U	1.0

U1800

name	rating	1	2	3	4	5	total
1 Michael Slepoy	1765	+24	+4	+16	=2	+7	4.5
2 William Ong	1782	X	+31	+7	=1	H	4.0
3 W Michael Bacon	1717	+6	+15	H	=5	+9	4.0
4 Daniel DeVault	1690	+28	-	+24	+16	=5	3.5
5 Anthony Guerra	1628	=9	+17	+26	=3	=4	3.5
6 Jacob Slepoy	1610	-3	B	+29	=11	+19	3.5
7 Fergal McArdle	1783	+23	+30	-2	+18	-1	3.0
8 Zoltan Szaloky	1768	=12	-20	+31	=13	+25	3.0
9 Connor Haley	1723	=5	H	+25	+23	-3	3.0

10 Marvin Bolden	1718	-30	+12	+20	=19	=11	3.0
11 K. Ramachandran	1710	+21	H	=14	=6	=10	3.0
12 Clayton Swafford	1640	=8	-10	B	=21	+23	3.0
13 James Landes	1619	H	-19	+17	=8	+24	3.0
14 Gayatri Vempate	1533	+27	H	=11	=20	=15	3.0
15 Charles Butler	1788	+32	-3	-18	+22	=14	2.5
16 Benjamin Wheeler	1784	+18	+29	-1	-4	H	2.5
17 Percy Galimberti	1705	H	-5	-13	X28	X27	2.5
18 Robert Haskell	1684	-16	+32	+15	-7	=20	2.5
19 Lloyd Uhler	1663	=26	+13	H	=10	-6	2.5
20 Alan Lin Chen	1646	H	+8	-10	=14	=18	2.5
21 James Hughes	1606	-11	=27	+32	=12	H	2.5
22 Amita Vempate	1465	-29	H	+27	-15	+32	2.5
23 Arnold Liao	1684	-7	B	+30	-9	-12	2.0
24 Julius Cromartie	1666	-1	+28	-4	X31	-13	2.0
25 William Martz	1603	B	-26	-9	X29	-8	2.0
26 Misel Neskovic	1737	=19	+25	-5	U	U	1.5
27 Hector Martinez	1700	-14	=21	-22	B	F17	1.5
28 Sigifredo Franco	1470	-4	-24	B	-17	H	1.5
29 S. Vijayaraghavan	1688	+22	-16	-6	F25	U	1.0
30 Bruce Lewkowski	1616	+10	-7	-23	U	U	1.0
31 Jimmy Heiserman	1395	B	-2	-8	F24	U	1.0
32 Robert Smeltzer	1600	-15	-18	-21	H	-22	0.5

U1600

name	rating	1	2	3	4	5	total
1 Todd Appelbaum	1577	+7	+9	+12	-3	+8	4.0
2 James David Hord	1550	-8	+13	+19	+7	+3	4.0
3 Charles Thjolen	1545	+19	=4	+8	+1	-2	3.5
4 Jimmy Perry	1521	+13	=3	=6	=5	H	3.5
5 Nate Conrad	1489	H	+10	+9	=4	H	3.5
6 Joshua Spare	1466	=11	+16	-4	+13	+10	3.5
7 Roger Gaiha	1470	-1	+14	+18	-2	+12	3.0
8 Doyle Lobaugh	1440	+2	+11	-3	+16	-1	3.0
9 Paul R Chua	1437	+14	-1	-5	+15	+16	3.0
10 Robert Abbott	1412	B	-5	+15	+12	-6	3.0
11 Frank Roberts	1561	=6	-8	-16	+18	+14	2.5
12 Raymond Hung	1588	+17	+15	-1	-10	-7	2.0
13 Freddy Burklow	1577	-4	-2	B	-6	+18	2.0
14 Sivanant Chelliah	1573	-9	-7	+17	+19	-11	2.0
15 Ankit Chandola	1495	+18	-12	-10	-9	X19	2.0
16 Christian Leppert	1548	H	-6	+11	-8	-9	1.5
17 Steven Horn	1494	-12	-18	-14	B	H	1.5
18 Thomas George	1434	-15	+17	-7	-11	-13	1.0
19 Joe Simmons	1415	-3	B	-2	-14	F15	1.0

U1400

name	rating	1	2	3	4	5	total
1 Tim Shipper	1392	-4	+5	+11	+7	+2	4.0
2 Tyler Mow-Unland	1384	+3	+8	+6	+4	-1	4.0
3 Alan Glenton	1262	-2	+9	+8	+6	+7	4.0
4 Robert Sturgeon	1329	+1	+7	+12	-2	U	3.0
5 Kevin Lu	1368	=11	-1	-7	+12	+10	2.5
6 Matthew Davis	1352	H	+10	-2	-3	H	2.0
7 Susan Breeding	1350	+12	-4	+5	-1	-3	2.0
8 Stanley Yang	1306	+9	-2	-3	-10	+11	2.0
9 Mark Duncan	1233	-5	-3	-10	-11	B	2.0
10 Harold Williams	1204	B	-6	-9	-8	-5	2.0
11 Roman Stolyarov	1275	=5	-12	-1	+9	-8	1.5
12 Thomas Thongmee	1256	-7	+11	-4	-5	H	1.5

**Tarrant County Championship
November 8 2003
Open Section**

U1200						
name	rating	1	2	3	4	5 total
1 Russell Wylie	1196	+13	+7	+3	-2	+6 4.0
2 William Riley	1096	+10	=11	=14	+1	+5 4.0
3 Matthew Liu	1051	+4	+15	-1	+10	+9 4.0
4 Michael Huang	1154	-3	X	=15	+12	+10 3.5
5 Stephanie Klimczak	1121	+6	+8	H	H	-2 3.0
6 Ted Shipper	1053	-5	+14	+11	+7	-1 3.0
7 Bill Abbott	1027	X	-1	+9	-6	+12 3.0
8 Reece Cherry	820	B	-5	-10	+13	X14 3.0
9 Theodore Jamison	1102	-15	+13	-7	+14	-3 2.0
10 Phillip Woods Jr	955	-2	B	+8	-3	-4 2.0
11 Cleophes Lambert	1107	+16	=2	-6	F	U 1.5
12 Carleton Furbush	1088	-14	=16	B	-4	-7 1.5
13 Kathleen Riley	1080	-1	-9	H	-8	B 1.5
14 Kons Parkhomenko	931	+12	-6	=2	-9	F8 1.5
15 Justin Barry	unr	+9	-3	=4	F	U 1.5
16 Zack Morrison	982	-11	=12	U	U	U 0.5

Unrated						
name	rating	1	2	3	4	5 total
1 Jamesx Ong	unr	+4	=5	+3	+2	H 4.0
2 Preston Cheng	unr	+3	H	+5	-1	+6 3.5
3 Douglas Cherry	unr	-2	B	-1	+6	+5 3.0
4 Mark Marshall	unr	-1	+6	H	-5	B 2.5
5 Rod Henry	unr	+6	=1	-2	+4	-3 2.5
6 J.Hope Osborn	unr	-5	-4	B	-3	-2 1.0

**Jim Gallagher Memorial
San Antonio, TX - Nov 22-23
Open**

1 James Huddleston	2072	+7	+22	+15	=2	3.5
2 Cristian Carvajal	2046	+10	+20	+11	=1	3.5
3 Matthew Willis	1897	X28	=4	=6	+11	3.0
4 John Hendrick	2117	+25	=3	+17	=5	3.0
5 Stephen	1846	=16	+12	+20	=4	3.0
6 Douglas Taffinder	2082	+19	=17	=3	=9	2.5
7 Brandon Moore	1670	-1	+26	+21	=8	2.5
8 Dale Dike	2005	-12	+24	+13	=7	2.5
9 Karl Disher	1884	-11	+19	+18	=6	2.5
10 Jose DeLeon	1651	-2	=25	+24	+16	2.5
11 Don Marcott	2133	+9	+23	-2	-3	2.0
12 Steve Coyle	1579	+8	-5	-14	+19	2.0
13 James Burnside	1629	+14	-15	-8	+21	2.0
14 Steven Herbert	2010	-13	+16	+12	U	2.0
15 John Patty	2200	+24	+13	-1	U	2.0
16 Ernest Templer	1727	=5	-14	+25	-10	1.5
17 John Hytlin	1956	+18	=6	-4	U	1.5
18 Gerald Castleberry	1500	-17	+27	-9	=24	1.5
19 Pedro Figueroa	1739	-6	-9	B	-12	1.0
20 James Rohrbaugh	2255	+26	-2	-5	U	1.0
21 Dustin Pattinson	1326	-23	B	-7	-13	1.0
22 Selby Anderson	2275	+27	-1	U	U	1.0
23 Andres Hortillosa	1900	+21	-11	U	U	1.0
24 Guillermo Medina	1751	-15	-8	-10	=18	0.5
25 Juan Carrizales	1762	-4	=10	-16	U	0.5
26 Charles Roach	1801	-20	-7	U	U	0.0
27 Gary Zintgraff	1752	-22	-18	U	U	0.0
28 Michael Machado	1825	F3	U	U	U	0.0

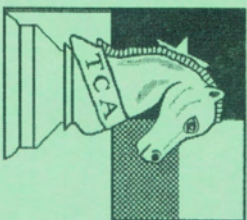
name	rating	1	2	3	4 total
1 Aurelio Gonzalez	1895	+10	=5	+12	+3 3.5
2 Kevin Fleming	2109	+8	-4	+5	+9 3.0
3 Jim Hollingsworth	1862	+7	+9	+4	-1 3.0
4 Thomas Kusnierz	1856	+16	+2	-3	H 2.5
5 Carmen Chairez	1808	+14	=1	-2	+11 2.5
6 Courtney Jamison	1724	=15	=11	=7	+13 2.5
7 Chase Watters	1588	-3	+16	=6	+12 2.5
8 Stephanie Ballom	1706	-2	+15	-11	+14 2.0
9 Clayton Swafford	1647	+17	-3	+10	-2 2.0
10 Wallace Brady	1642	-1	+14	-9	+15 2.0
11 Paul Huspeni	1442	=12	=6	+8	-5 2.0
12 Marvin Bolden	1727	=11	+13	-1	-7 1.5
13 Taylor Martin	1392	B	-12	=15	-6 1.5
14 John DeVries	1466	-5	-10	+16	-8 1.0
15 Jacob Lee	1431	=6	-8	=13	-10 1.0
16 Robert Jagger	1486	-4	-7	-14	H 0.5
17 Kent Gordon	2008	-9	U	U	U 0.0

Reserve Section

name	rating	1	2	3	4 total
1 Jay Arendt	1273	+7	+11	+3	+4 4.0
2 Jeffrey Spyrison	1137	+8	+12	-4	+9 3.0
3 Wesley Anderson	1100	+6	+5	-1	+8 3.0
4 Justin McCaghren	1082	+9	+10	+2	-1 3.0
5 Larry Gilbert	1357	+13	-3	=6	+12 2.5
6 Ryan Bartholomee	unr	-3	+7	=5	+14 2.5
7 Justin Leverett	971	-1	-6	+14	+11 2.0
8 Reece Cherry	820	-2	+14	+12	-3 2.0
9 Douglas Cherry	unr	-4	+13	+11	-2 2.0
10 Scott Kelley	1064	-12	-4	+13	H 1.5
11 Joo-Hoen Park	unr	+14	-1	-9	-7 1.0
12 Richard Gallo	unr	+10	-2	-8	-5 1.0
13 Thomas Crane	1051	-5	-9	-10	H 0.5

**Jim Gallagher Memorial
San Antonio, TX - Nov 22-23
Reserve**

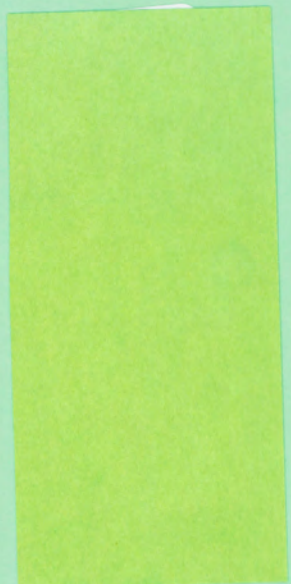
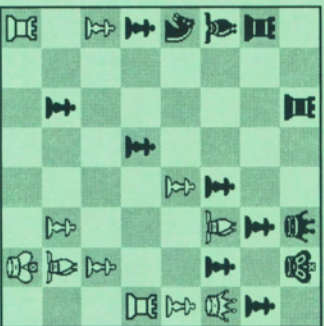
1 Iva Davis	1666	+14	+18	+9	+5 4.0
2 Richard Lopez	1644	X	-3	+16	+10 3.0
3 James Moon	1371	+20	+2	-10	+13 3.0
4 Rheanna English	1423	H	=6	+11	+9 3.0
5 Anthony Guerra	1628	+15	+11	H	-1 2.5
6 Ben Hoskins	1397	=16	=4	=15	+14 2.5
7 Juan Lopez	1271	=10	-13	+12	+15 2.5
8 Matthew Liu	1051	+13	-9	+18	H 2.5
9 Wendle Scott	1615	+12	+8	-1	-4 2.0
10 Duane Solley	1671	=7	=16	+3	-2 2.0
11 Avram Bukhbinder	861	+19	-5	-4	B 2.0
12 George Todd	995	-9	+20	-7	+18 2.0
13 Paul Franke	1643	-8	+7	=14	-3 1.5
14 Howard Berger	1326	-1	+17	=13	-6 1.5
15 Vicente Ramirez	1003	-5	B	=6	-7 1.5
16 Toshio Imai	1400	=6	=10	-2	H 1.5
17 Ben Rigney	886	-18	-14	X	H 1.5
18 James Cain	1514	+17	-1	-8	-12 1.0
19 Matthew Rigney	882	-11	H	U	U 0.5
20 C. Kaihlanen	573	-3	-12	F	U 0.0
21 D. Christiansen	1092	F	U	U	U 0.0
22 K. Christiansen	581	F	U	U	U 0.0
23 Cody Garcia	unr	F	U	U	U 0.0



Texas Chess Association
P.O. Box 5768
Waco, TX 76708-0768

NON-PROFIT ORG
US POSTAGE PAID
Waco, TX
Permit No. 1081

See inside front cover for
TCA membership information.



Mate in 3

Fischer - Magnusuren, Soussse 1967

Solution: page 12