

TEXAS KNIGHTS

The Official Publication of the Texas Chess Association

\$ 3

Volume 47, Numbers 1-4

P.O. Box 501 Helotes, Texas 78023-0501

March-April 2006



GM Timur Gareev

from Uzbekistan to Brownsville

- 2006 Southwest Collegiate Champion
- 2005 National Collegiate Champion

1,626 in Texas Scholastic

College	Timur Gareev
High School	Alex Chua
Middle School	Kevin Wang Andrew Ortiz
Elementary	Darwin Yang
Primary	Fernando Spada
K-1	Jonathan Chiang

The President's Column – Clemente Rendon.....	p. 3
2003 Texas Scholastic Championship.....	p. 4
1st Polgar National in Corpus Christi – Nelly Estrada 1st.....	p. 6
Denker/Polgar games – notes by Deepyman Datta and Anjali Datta.....	p. 7
Texas Team Championship – <i>Jimbo's Heroes</i> win.....	p. 8
Sylvia Yang at the World Youth Championships.....	p. 13
World Open – Dejmek annotates; Panchanathan makes final GM norm!.....	p. 14
2005 Texas State Championship – IM Amon Simutowe wins.....	p. 17
2005 Texas Amateur – Austen Green goes 7-0!.....	p. 27
Short reports – 2005 tournaments in San Antonio, Watauga.....	p. 27
2005 Southwest Open – Zivanic, Bradford tie.....	p. 32
Simutowe =1st at Governor's Cup – notes by IM Amon Simutowe.....	p. 33
TCA Minutes – Lorraine Widener and Nelda Rogers.....	p. 35
College Spotlight – UTD's Sam Copeland annotates.....	p. 37

President: Clemente Rendon, P.O. Box 4988, Brownsville, TX 78523; crendon44@hotmail.com. **Vice-President:** Victor J. Flores, 5475 Stagecoach Trail, Brownsville, TX 78526; 956.986.2645, vjmflores@aol.com. **Secretary:** Lorraine Widener, P.O. Box 4988, Brownsville, TX 78523; lorraine@manisys.com **Treasurer:** Nelda Rogers, 225 Jade Dr., Brownsville, Texas 78520; NJRogers@bisd.us. **Editor:** Selby Anderson, POB 501, Helotes, TX 78023; (210) 695-2324; schachlied@yahoo.com. **Webmaster:** James Widener, 4305 Robindale Rd., Brownsville, Texas 78526; james@manisys.com. **Tournament Clearinghouse:** Victor J. Flores, vjmflores@aol.com. **Postal Chess:** Mario Leal, mleal@spamcop.net. **Texas Chess Association** is a 501(c)(3) educational nonprofit corporation dedicated to promoting chess in Texas. **Regular Membership:** \$10/yr. **Junior** (18 or under) and **Student** (with ID) **Memberships:** \$7.50. **Foreign Membership:** \$12.50 (Canada & Mexico), other foreign \$17.50. **Patron Membership:** \$25 (first class mailing of *Texas Knights* plus listing in Hall of Honor.) **Family Membership:** \$15. **Membership without Texas Knights:** \$5. **Club Membership:** \$25 (\$10 schools, \$40 foreign), includes one 1/4 page ad per year. Send to **TCA Treasurer, 225 Jade Dr., Brownsville, Texas 78520.** Give name, address, city, state and zip code; also phone and e-mail (optional).

TCA Hall of Honor

Enrico Accenti 0207
 Angela Alston 0407
 Selby Anderson 9999
 Joe Bradford 0607
 Clarence Callaway 9999
 John T. Campbell 0606
 Mike Carpenter 1203
 G.W. Church, Jr. 9999
 William D. Collin 0906
 Isaac Dimayuga 0107
 Dr. Raymond D. Duque 0307
 Chuck Easttom 0107
 Rheanna English 0408
 Feinstein Michael 1008
 Jason Garza 0407
 Teresa Gauntt family 0207
 Edward G. Guetzow 0407
 Toshio Imai 1006
 Andrienne Inglis 0806

Bob James family 0506
 George C. John family 0206
 Haraldur Karlsson 0506
 John Kolts 0607
 Paul Krauss 0506
 Tom Kusnierz 0407
 Mike Larimer family 1006
 Patrick Long 9999
 Forrest Marler 1107
 Mark E. McCue 0706
 Donald Morrison family 0107
 George A. Mota 0706
 Robert H. Nunnally, Jr. 0107
 John Patty 0407
 Robert B. Potter 9999
 Robert Rausch family 0107
 Augustin Rivera family 1106
 Alan Rodenstein 0107
 James Rohrbaugh 0107

Doug & Alexey Root 0906
 Luis Salinas 0407
 Wayne Sampson 0407
 Shivkumar Sankaranarayanan 0407
 Drew Sarkisian 0107
 Douglas Schwetke 0706
 Robert Sturgeon 1006
 Rodney J. Thomas 0407
 Harmon Throneberry 9999
 Louis Thurston 9999
 George Tintera 0207
 Ben Tollerene 1006
 Gordon Weintraub 0607
 David Williamson 0407
 Steven D. Young 0506
 (Note: Contributions beyond membership fees are tax deductible.)

Contributors this issue: Sam Copeland, Anjali Datta, Deepyman Datta, Mark Dejmek, Tom Kusnierz, Mario Leal, Clemente Rendon, Nelda Rogers, Luis Salinas, Amon Simutowe, Sylvia Wang, Lorraine Widener.

Send submissions (paper or disk) with your phone number to P.O. Box 501, Helotes, TX 78023-0501; or e-mail to schachlied@yahoo.com. Deadline next issue: **Apr. 15.**

All contents of *Texas Knights* © 2006 by the Texas Chess Association, Inc.. No part may be reproduced in any way without the express consent of the editor. Advertising rates: \$50/page, \$35/half, \$20/quarter, \$1/line (two column format).

Cover photo: *The Collegian*. Submitted by Russell Harwood.

President's Column

Greetings Texas Chess Players,

One of my goals when I became TCA president was to have a president's column every issue so that I could keep the membership updated. Since this issue will cover quite a few months, I will be discussing quite a bit of the happenings within TCA.

Texas Knights: As many of you might have heard or noticed, Selby Anderson was recently appointed as the *Texas Knights* editor. The previous *Texas Knights* issues (Jul/Aug, Sept/Oct, Nov/Dec and Jan/Feb) are all being consolidated into this issue. Since TCA members essentially missed four publications, all memberships that were current as of July 2005 are being extended by eight months. I am hopeful that this solution will satisfy everyone.

Website: I am proud to announce that our Webmaster, James Widener, has substantially upgraded the TCA website. The website is available at www.texaschess.org

The site features a news section, a calendar of upcoming events, various sponsors, and updated content. There are plans to add all new *Texas Knights* issues to the site, and allow members to download archives of past *Texas Knights* magazines. The site will also feature TCA Tournament Management Software, which will be utilized to automatically create pairings on line. Our membership database is also currently being re-engineered, so that future TCA payments can be made on the web and the membership database can

automatically be updated. I believe that all of these improvements will take the TCA to new heights and position us on the cutting edge of technology.

Forum: TCA currently utilizes an on-line forum where the various officers, committees and directors conduct business. Any TCA member is free to join the forum <http://forum.texaschess.org/>. The forum is an excellent tool for staying informed about activities within the TCA.

Tournaments: This year the 2006 Texas State Scholastic attracted 1,626 students! There are many bids that are due for the current cycle. For a list of upcoming bids please visit www.texaschess.org and then click on Bidding Information. To see upcoming events, click on the calendar.

Governance: A list of the various officers, committees and directors are available at www.texaschess.org/page.php?45 along with their contact information.

Exciting positive developments in Texas:

A) **Governor's Cup:** Texas State Champion IM Amon Simutowe tied for first place at the 2005 Governor's cup (www.uschess.org/msa/XtblMain.php?200510307611.0).

B) **Susan Polgar Chess Center:** <http://www.susanpolgartexas.com> The Susan Polgar Center, which was just opened last May in Corpus Christi, has had numerous activities and tournaments. Among them, the Susan Polgar National Open Championship for Girls was held this January. The tournament was a huge success, drawing over 210 female players from around the country. For more information contact Director Dan DeLeon at director@susanpolgarsouthtexaschesscenter.com



C) **Children and Chess: A Guide for Educators:** Texas' own Dr. Alexey Root's much anticipated book will be published March 30, 2006. *Children and Chess* is the first book to show the connection between foundational principles of education and chess. Chess can be a useful addition to the education of students in grades 3-8, if care is taken in planning chess curricula. To order Root's book, please go to the following link: <http://lu.com/showbook.cfm?isbn=1591583586> or simply open the main page of the Libraries Unlimited website www.lu.com and click on Forthcoming Titles or (after March 30) on New Titles. For more information contact Dr. Alexey Root, aroot@utdallas.edu.

I would like to thank everyone for your continued support and for all of your hard work. I trust that we will be able to continue to our mission of promoting chess throughout Texas!

Respectfully,
Clemente Rendon
TCA President

2006 Texas Scholastic Championships

This year 1,626 players competed in twelve sections at the Hilton of the Americas in downtown Houston. The event was held Feb. 4-5, fully a month before Spring Break. According to organizer Luis Salinas of Southwest Chess Enterprises, a personnel change at the hotel led to a delay in the contract signing, by which time only Superbowl weekend was left. Aside from the obvious hardship on football fans who are also chess parents, coaches and players, the event went very well.

The state collegiate championship in its sixth year remains small but more powerful than ever, with four FIDE titled players. GM Timur Gareev of Uzbekistan, a freshman at UT-Brownsville, tied for first with IM Drasko Boskovic of Serbia-Montenegro, now a student at UT-Dallas.

Gareev and the UTB team received some media buzz last December following their win (ahead of UTD) at the National Grade/Collegiate Championships in Houston. Gareev, 17, was treated as a sports hero in a holiday parade in Brownsville, with a place of honor next to university president Juliet Garcia. The team is mostly home-grown, with four players from Brownsville and two from across the border in Matamoros. The program has grown from the bottom up, testimony to what Jose J. Guajardo started in the local public schools some 15 years ago.

Congratulations also go to their coach, GM Roman Dzindzichashvili. On the heels of these successes he has surprised many by announcing he is leaving the UTB chess program for personal reasons (see page 34).

At this event, UTD made up for its #2 showing last December by sending some of its big guns, including IMs Boskovic, Zivanic and Kuljasevic. Result: second through seventh places were taken by UTD students. This is the fourth straight title for the UTD team at this event, but never before was the margin so close.

Southeast Collegiate Championship (21 players, 5 rounds)

1 Timur Gareev	2547	4.5 pts.	UTB	Brownsville
2 Drasko Boskovic	2485	4.5	UTD	Dallas
3 Marko Zivanic	2578	3.5	UTD	Dallas
4 Jonathan Allen	1897	3.5	UTD	Dallas
5 Marc Fuhrmann	2149	3.5	UTD	Dallas

Southwest Collegiate Team

1 U. of Texas-Dallas	Dallas	15.0
2 U. of Texas-Brownsville	Brownsville	13.0

Alex Chua, a senior at Keller HS northwest of Dallas, regained the Texas high school title, making this his third. Eric Dong was awarded a four-year scholarship to the University of Texas at Dallas. Chua won his UTD scholarship back in 2002(!), when he tied for first in the US Junior Open.

High School Championship (137 players, 7 rounds.)

1 Alex Chua	7.0	Keller HS	Keller
2 Eric Dong	6.0	Clear Lake	Houston
3 Jordan Smith	6.0	Heritage	Houston
4 Haoshuang Zhang	6.0	Clements	Sugar Land
5 Francisco Guadalupe	6.0	Clear Lake	Houston
6 Warren Harper	6.0	Tenney School	Houston

High School Championship Team

1 Hanna High School	Brownsville	18.5
2 Clear Lake HS	Houston	18.5
3 Porter High School	Brownsville	18.0

High School JV (U1000) (101 players, 7 rounds)

The standings in this section are under review because of an alleged cheating incident.

Middle School Championship (194 players, 7 rounds)

1 Kevin Wang	6.5	McCullous	The Woodlands
2 Andrew Ortiz	6.5	Vela	Brownsville
3 William Ong	6.0	Village School	Houston
4 Adarsh Jayakumar	6.0	Travis Vangard	Dallas
5 Alexander Balkum	6.0	AAHS	Austin
6 Joseph Wong	6.0	John Cooper	The Woodlands

Middle School Championship Team

1 Vela Middle School	Brownsville	21.5
2 Canyon Vista	Austin	20.5
3 T.H. Rogers	Houston	20.0
4 The Village School	Houston	19.0

Middle School JV (U900) (131 players, 7 rounds)

1 Nick Petersen	7.0	St. John's Epis.	Dallas
2 Judge T. Jones	6.0	Pershing	Houston
3 Alex Salas	6.0	Faulk	Brownsville
4 Robert Valencia	6.0	Dealy Montessori	Dallas
5 Bryan Tony	6.0	St. Vincent's	Bedford
6 William Watson	6.0	Stell	Brownsville

Middle School JV Team

1	Pershing Middle School	Houston	20.5
2	Faulk Middle School	Brownsville	19.5
3	St. Vincent's	Bedford	19.5
4	Garcia Middle School	Brownsville	19.5

Middle School Novice (U600)

(100 players, 7 rounds)

1	Gil Covarrubias	7.0	Hornedo	El Paso
2	Darryl Balderas	6.0	Besteiro	Brownsville
3	Armando Garza	6.0	Ysleta	El Paso
4	Ha Seung Yoon	6.0	Pershing	Houston

Middle School Novice Team

1	Ysleta Middle School	El Paso	20.5
2	Pershing Middle School	Houston	19.5
3	Hornedo Middle School	El Paso	19.0

Elementary Championship

(176 players, 7 rounds.)

1	Darwin Yang	7.0	Skaggs	Plano
2	Dylan James	6.0	AAHH	Austin
3	Roel Cantu	6.0	Russell Elem.	Brownsville
4	Derek Chang	6.0	Laurel Mountain	Austin
5	George Qi	6.0	Laurel Mountain	Austin
6	Ian Santos	6.0	Paredes Elem.	Brownsville
7	Jeffrey Hung	6.0	Villareal Elem.	Los Fresnos

Elementary Championship Team

1	Laurel Mountain Elem.	Austin	21.5
2	Paredes Elementary	Brownsville	20.5
3	Lillareal Elementary	Los Fresnos	18.5

Elementary JV (U800)

(160 players, 7 rounds)

1	Ryne Yamada	7.0	St. Gabriel's	Austin
2	Marco DeLeon	6.0	Jensen	Mission
3	Crystal Sandoval	6.0	Garden Park	Brownsville
4	Alfredo Esquivia	6.0	Leyendecker	Laredo
5	Nikita Budwal	6.0	Laurel Mountain	Austin
6	John Forrest	6.0	Bluebonnet	Flower Mound
7	Jose Urrutia	6.0	Garza	San Benito
8	Jose Perez	6.0	Garza	Brownsville

Elementary JV Team

1	Jensen Elementary	Mission	20.0
2	St. Vicent's Elementary	Bedford	19.5
3	Garden Park Elementary	Brownsville	19.5

Elementary Novice (U500)

(132 players, 7 rounds)

1	Allen Ojeda	6.5	Village School	Houston
2	Trygve Neufang	6.0	Eubanks	Southlake
3	Mark Garcia	6.0	Dealy Montessori	Dallas
4	Cristian Lacey	6.0	St. John's	Houston
5	Andrew Ortega	6.0	Longoria Elem.	Brownsville
6	Marcus Langham	6.0	Wilderness Oak	San Antonio

Elementary Novice Team

1	The Village School	Houston	20.5
2	Dealy Montessori	Dallas	18.5
3	Hinojosa Elementary	Mission	18.0

Primary Championship

(95 players, 7 rounds)

1	Fernando Spada	6.5	Hudson	Brownsville
2	Fernando Mendez	6.0	Garden Park	Brownsville
3	Jarod Pamatmat	6.0	All Saints Epis.	Tyler
4	Douglas Alford	6.0	Benavides	Brownsville
5	Truman Roscoe	6.0	T.H. Rogers	Houston

Primary Championship Team

1	T.H. Rogers Elementary	Houston	21.0
2	Garden Park Elementary	Brownsville	19.0
3	Benavides Elementary	Brownsville	18.0

Primary JV (U700)

(195 players, 7 rounds)

1	Andre Mercado	7.0	Canturbury	Edinburg
2	Patrick Pan	6.0	Falcon Pass	Houston
3	Jake Galant	6.0	Greenhill School	Addison
4	Hartley McGuire	6.0	Greenhill School	Addison
5	Ethan Le	6.0	James Williams	Katy
6	Tamara Prabhakar	6.0	Greenhill School	Addison
7	Maritza Mendez	6.0	Garza Elem.	San Benito
8	Mark Trujillo	6.0	Castaneda	Brownsville
9	Thaman Chillakuru	6.0	Challenger	Perland

Primary JV Team

1	Canturbury Elementary	Edinburg	22.0
2	Garza Elementary	San Benito	20.5
3	Greenhill School	Addison	20.0

K-1 Championship

(184 players)

1	Jonathan Chiang	7.0	Carroll	Southlake
2	Evan Xiang	6.0	T.H. Rogers	Houston
3	Raymond Sun	6.0	Beatty	Plano
4	Tassica Lim	6.0	T.H. Rogers	Houston
5	Kevin Durkin	6.0	Villareal	Los Fresnos
6	Lauren Guzman	6.0	Paredes Elem.	Brownsville
7	Dustin Chang	6.0	Laurel Mountain	Austin
8	Edgar Santoyo	6.0	Paredes Elem.	Brownsville
9	Mark Zhu	6.0	Travis	Houston

K-1 Team

1	Paredes Elementary	Brownsville	22.5
2	T.H. Rogers Elementary	Houston	21.5
3	The Village School	Houston	20.5

Complete standings are available on the Web at

www.swchess.com

Nelly Estrada wins first annual Susan Polgar National

Nelly Estrada from the University of Texas at Brownsville scored 6-0 to win the Open Section of the first Susan Polgar National Open Chess Championship for Girls under 21. The event, held Jan. 27-29, drew 210 girls from 14 states to the Bayfront Plaza Hotel in Corpus Christi.

Estrada also won the Puzzle Solving Championship, scoring a perfect 20 puzzles in 5 minutes.

Rheanna English, 14, from San Antonio, won the Open Blitz Championship with a perfect score of 7-0, defeating Nelly Estrada and Stephanie Ballom among others.

In addition, approximately 50 parents, coaches and siblings took part in the Texas Chess Shootout Championship.

Event founder GM Susan Polgar said the media coverage was excellent. Her Susan Polgar South Texas

Chess Center opened in Corpus Christi last May, thanks in large part to a parent who donated the building!

Originally from El Paso, Nelly Estrada has lived most of her life across the border in Juarez, Mexico. She was studying engineering there last semester when she was recruited by UTB's assistant chess coach Rusty Harwood. She decided to switch when she learned that UTB has a strong program in biology. She now plans to work toward a medical master's degree in biotechnology.

She started playing chess when she was eight years old. Now 19, she is a National Master in Mexico, and currently holds the title of Under-20 Female National Champion of Mexico.

For winning the main event, Estrada was awarded a Dell laptop computer and printer, and entry to the Susan Polgar Invitational Tournament this August in Chicago. For

the problem solving event she won a Susan Polgar Digital Clock.

Among the nearly 40 sponsors for this event were Polgar Chess, Polgar Foundation, USCF Sales, Texas Tech University, International Chess Marketing, Chess on DVDs, House of Staunton, Geek Cruises, Excalibur Electronics, World Chess Hall of Fame, Chess-Base, Viva Media, Mon Roi, The Susser Family, Del Mar College Cosmetology Dept., Imagine Digital Document Services, Gonzalez Distributing, Optimist Coastal Bend Chess Federation, Cingular of Corpus Christi, Corpus Christi Harley Davidson, Coastal Cardiology, The Lee Sang Family, Star Orthodontist and many more.

Special thanks go to chief organizer Dan DeLeon, chief TDs Bob and Lucy James, and assistant TD Susan Breeding, who volunteered their time to put together this magnificent and memorable event.

www.susanpolgar.blogspot.com



Nelly Estrada



Rheanna English, two games away from the blitz title

Dattas of Dallas dissect duels in the desert at the Denker/Polgar!

Deeptyman Datta represented Texas in last year's Denker Tournament of High School Champions, held Aug. 6-14 in Phoenix, Arizona. He finished with 4.5 out of 6, a half point out of the winners' circle, which included Josh Baker from Massachusetts, Zhi-Ya-Hu from Maryland and Trevor Jackson from Louisiana. There were 45 players.

Notes by Deeptyman Datta

QGD D64

**Deeptyman Datta
Trevor Jackson**

Denker Tournament 2005

This game was in the last round of the Denker tournament. It was disappointing one for me because I had a winning position which I could not convert. If I had converted, I would have shared first place in the tournament. I eventually tied for fourth place.

1.d4 e6 2.c4 d5 3.Nc3 Be7 4.Nf3 Nf6 5.Bg5 c6 6.e3 Nbd7 7.Rc1 0-0 8.Qc2 Re8 9.h3

9.a3 immediately is more common.

9...a6 10.a3 b5 11.c5

After 11.cxb5 cxb5 black would be okay because his knight on d7 is in the right place to move to c4.

11...Nh5 12.Bxe7 Qxe7 13.Bd3

13.g4 Nhf6 14.g5 Nh5 15.Bd3 g6 appears to give nothing.

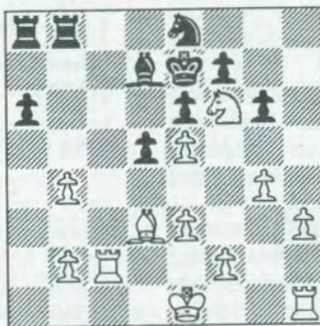
13...g6 14.Ne5!? Nxe5 15.dxe5 Qxc5 16.g4 Ng7 17.Ne4 Qxc2 18.Nf6+ Kf8

Loses a second pawn. Better is 18...Kh8 19.Rxc2 Rd8 20.Rxc6 Bb7 21.Rc7 Rac8 22.Rxc8 Rxc8 23.Kd2 ±.

19.Rxc2 Rd8 20.Nxh7+ Ke7 21.Rxc6 Bd7 22.Rc2

Better is 22.Rb6 I was worried the rook might become a target for an eventual ... Ke7-d8-c7, but black is actually unable to carry out this plan. The move also prevents b4 ideas for the time being.

22...b4 23.axb4 Rdb8 24.Nf6 Ne8



25.Nxe8

Better is 25.Nxd7 Kxd7 26.h4 Rxb4 27.h5 Rxc4 28.hxc6 fxc6 29.Rh7+ Kd8 - I had seen the line up until this point, but missed 30.Rc6 which would give me a decisive advantage.

25...Bxe8 26.b5?

Better is 26.h4 Rxb4 27.h5 Rxc4 28.h6 Bd7 29.f4 (better than 29.h7 Rh8 30.f4 Bb5 31.Bxb5 axb5 32.Rc5 Kf8 33.Rxb5 Kg7 34.Rb7 g5 35.fxc6 Rxc6 36.Rxc7+ Kxc7 37.Rxf7+ Kg6 38.Rf6+ Kxc7 and the position seems headed for a draw.) 29...g5 30.h7 Rh8 31.Bxa6 gxf4 32.Rc7 Kd8 33.Ra7+-.

26...Bxb5 27.Bxb5 Rxb5 28.0-0 Rab8 29.Ra1 Rxb2 30.Rc7+ Kf8 31.Rxa6 R2b7 32.Rxb7 Rxb7

Now, the resulting rook end-game is most likely a draw.

33.Ra4 Kg7 34.Kg2 Kh6 35.h4 Rc7 36.Rd4 Rc1 37.e4 dxe4 38.Rxe4 Rc5 39.Kg3 Rc3+ 40.Re3 Rc5 41.f3 Rc1 42.Ra3 Rc5 43.Ra7 Kg7 44.Kf4 Rb5 45.h5 gxh5 46.gxh5 Rb1 47.Ra4

47.h6+ Kg6 (forced) =.
47...Kh6 48.Ra7 Kg7 49.Ra4 Kh6 50.Ra7 Draw

The second annual Polgar Invitational for Girls was held concurrently. Anjali Datta, who won the Texas Polgar Qualifier in June, finished with the same result as her brother: 4.5 out of 6. Here too, there was a three-way tie for first with WFM Alisa Melekhina from Pennsylvania, Abby Marshall from Ohio, and WGM Anya Cork from California each scoring 5-1. A total of 48 girls competed.

Notes by Anjali Datta

Budapest Gambit A52

**Anjali Datta
Taylor Bailey**

Polgar Invitational 2005

1.d4

This was the first game in the Polgar tournament. I started with a win but drew the next three. That put me behind and even though I won the rest I was only able to tie for the fourth place. It was disappointing for me because I had winning chances in two of the three drawn games.

1...Nf6 2.c4 e5 3.dxe5 Ng4 4.Bf4 Bb4+ 5.Nd2 Nc6 6.Ngf3 Qe7 7.a3 Ngxe5 8.Nxe5 Nxe5 9.e3 Bxd2+ 10.Qxd2 d6 11.Bxe5

White should just proceed to play without giving up the two bishops. 11.Be2 is book.

11...dxe5 12.Be2 0-0 13.0-0-0

13.0-0 is simple and good.

13...Bf5 14.g4?!

A kingside attack is probably impractical since all of Black's pawns on that wing are on their original squares.

14...Rfd8 15.Qc3 Be4 16.f3 Bg6 17.h4 Rxd1+?

(Continued on page 12)

Texas Team champs: Jimbo's Heroes Ride Again

Jimbo's Heroes Ride Again won the 2006 Texas Team Championship, held Jan. 21-22 in San Antonio. The team, named for the late Jim Gallagher, included Selby Anderson, Jim Rohrbaugh, John Patty and J.P. Hyltin. Together they scored 3.5 out of 4 match points, drawing the last round match with Austin's *Three In-Vincible Masters and One Young Champion* (Mikhail Langer, Michael Feinstein, Richard Ketcham, and Alexander Balkam).

Second place went to a teenage Houston team which gave the Austinites their only loss, *1.h4* (Francisco Guadalupe II, Warren Harper, Brad Sawyer, and Kevin Wang), with 3 out of 4 match points. Brad Sawyer had the only perfect score of the tournament.

Four teams tied for 1st-2nd Under 1900. In tiebreak order, they were *Jesse James Gang Rides Again* (Gregg Stanley, Martin Gordon, Jesse Lozano, Rheanna English), *Furios Four* (William Molina, Yuri Mirgorodsky, Jeff Sneden, Scott Slade), *Knights of the Square Table* (Angela Alston, Julian Hernandez, Matthew Liu, Richard Lopez, Charles Haring), and *They Might Be Midgets* (Paul Chaplin, Eugene Kohnitz, Danny Chen, Dylan James). The U1900 trophy went to *James Gang* by a wide margin – over ten tiebreak points using the US Amateur Team method.

\$1,000 was paid in prizes. Martin Gordon directed a field of ten teams.

The top scorer for *Jimbo's Heroes* was anchorman J.P. Hyltin (3.5-0.5), who observed that we won with the least possible wins in every match. To wit, Anderson and Rohrbaugh barely had plus scores on the top boards with 2.5 each. Patty on third went in a hole, 1-3. Long story short: good timing overcomes a lot!

Factoids

1.h4 took its name from an experimental opening used by Warren Harper, who once asked an opponent if he would be offended by the opening. With permission granted, Harper played *1.h4* and won!

Three In-Vincible Masters and One Young Champion is not bad spelling but a tribute to quarterback Vince Young of the NCAA champion UT Longhorns.

Francisco Guadalupe II competed in last year's Denker Tournament as the Florida representative.

The Carl Schlechter Peace Prize goes to Gregg Stanley, who scored a perfect string of four draws.

Texas Team Championship San Antonio, January 21-22

#	team name (game pts.)	rating	1	2	3	4	total
1	Jimbo's Heroes Ride Again	2176	+6	+4	+3	=2	3.5
2	Three In-Vincible Masters and a Young Champion	2098	+7	-3	+5	=1	2.5
3	1.h4	2063	+8	+2	-1	+5	3.0
4	Who Poisoned the Pawn?	1998	+9	-1	-7	=8	2.0
5	furios	1872	+10	+6	-2	-3	2.0
6	Jesse James Gang Rides Again	1844	-1	-5	+9	+7	2.0
7	Knights of the Square Table	1808	-2	+10	+4	-6	2.0
8	Espuelas	1802	-3	-9	+10	=4	1.5
9	They Might Be Midgets	1761	-4	+8	-6	+10	2.0
10	Gig 'Em	1540	-5	-7	-8	-9	0.0

Texas Team - Individuals

	name (team #)	rating	1	2	3	4	total
1	Mikhail Langer (2)	2277	+14	+9	+16	-2	3.0
2	Selby Anderson (1)	2270	=13	-5	+9	+1	2.5
3	Michael Feinstein (2)	2264	+28	-12	+21	+6	3.0
4	Richard Ketcham (2)	2236	+31	-15	+23	+7	3.0
5	Nicholas Schoonmaker (4)	2225	=10	+2	+14	=8	3.0
6	Jim Rohrbaugh (1)	2201	+18	=11	+12	-3	2.5
7	John Patty (1)	2200	-27	+22	-15	-4	1.0
8	Mitch Vergara (8)	2144	-9	-10	+34	=5	1.5
9	Francisco Guadalupe II (3)	2137	+8	-1	-2	+16	2.0
10	Paul Chaplin (9)	2136	=5	+8	=13	=34	2.5
11	Kevin Fleming (4)	2115	+19	=6	-26	+25	2.5
12	Warren Harper (3)	2103	+25	+3	-6	=21	2.5
13	Gregg Stanley (6)	2095	=2	=16	=10	=14	2.0
14	Angela Alston (7)	2075	-1	=34	-5	=13	1.0
15	Brad Sawyer (3)	2070	+30	+4	+7	+23	4.0
16	William Molina (5)	2053	=34	=13	-1	-9	1.0
17	J.P. Hyltin (1)	2033	+32	+24	=20	+36	3.5
18	Martin Gordon (6)	1966	-6	-21	+19	+26	2.0
19	Eugene Kohnitz (9)	1950	-11	+25	-18	+35	2.0
20	Kevin Wang (3)	1943	+38	+36	=17	=29	3.0
21	Yuri Mirgorodsky (5)	1916	+35	+18	-3	=12	2.5
22	Aurelio Gonzalez (4)	1853	+37	-7	-28	=30	1.5
23	Jeffrey Sneden (5)	1815	=39	=27	-4	-15	1.0
24	Julie O'Neill (4)	1800	+40	-17	=33	-38	1.5
25	Anthony Guerra (8)	1779	-12	-19	-35	-11	0.0
26	Julian Hernandez (7)	1778	U	+35	+11	-18	2.0
27	Jesse James Lozano (6)	1770	+7	=23	+37	+28	3.5
28	Matthew Liu (7)	1711	-3	+39	+22	-27	2.0
29	Scott Slade (5)	1705	+41	+32	-36	=20	2.5
30	Fernando Spada (8)	1692	-15	+37	+39	=22	2.5
31	Richard Lopez (7)	1669	-4	U	U	U	0.0
32	Rheanna English (6)	1656	-17	-29	+40	=33	1.5
33	Charles Haring (7)	1643	-36	+41	=24	=32	2.0
34	Ebrahim Montazeri (10)	1639	=16	=14	-8	=10	1.5
35	Chris Fuqua (10)	1630	-21	-26	+25	-19	1.0
36	Alexander Balkum (2)	1617	+33	-20	+29	-17	2.0
37	Danny Chen (9)	1596	-22	-30	-27	+39	1.0
38	Gabriel Guerra (8)	1594	-20	-40	+41	+24	2.0
39	Jonathan Tuck (10)	1532	=23	-28	-30	-37	0.5
40	Dylan Scott James (9)	1364	-24	+38	-32	+41	2.0
41	Aaron Reyes (10)	1359	-29	-33	-38	-40	0.0

B=bye H=1/2 pt. bye U=unplayed X=forfeit win F=forfeit loss
Z=zero pt. bye *=house player r/e = re-entered

h5 19. h4 Rxc3+! 20. fxc3 Qxc3+ 21. Rg2 Qe3+ 22. Rgf2 Bg3 0-1

The MVP for 1.h4, Brad Sawyer, puts Ketcham on the defensive and reaps the point. On board one only the clock robs Guadalupe of a win, and his team of a total shutout.

Sicilian Alapin B22

Brad Sawyer 2070

1. h4

Richard Ketcham 2236

Three In-Vince-ible Masters and a Young Champion

Texas Team 2006 (2)

1. e4 Nf6 2. e5 Nd5 3. c4 Nb6 4. c5 Nd5 5. Bc4 e6 6. d4 d6 7. cxd6 cxd6 8. Nf3 Nc6 9. O-O Be7 10. exd6 Qxd6 11. Nc3 Nxc3 12. bxc3 O-O 13. Re1 b6 14. Nd2 Na5 15. Bd3 Bb7 16. Re3 f5 17. Nf3 Qc6 18. Qf1 Qxc3 19. Bd2 Qc6 20. Rae1 Rf6 21. Bxa5 bxa5 22. Bc4 ± Kh8 23. Rxe6 Rxe6 24. Rxe6 Qc7 25. Ne5 Bf6 26. Qe2 Rc8



Better was 26...Bxe5.

Now White has a nice crush with 27. Qh5 g6 28. Nxc6+ Kg7 29. Qxf5 Qd8 30.Re7+!!

27. h4? Bxe5 28. Rxe5 Be4 29. f3 Qd6??

29...Qd8! = keeps the back rank under observation.

30. Qe3 h6 31. Bb3 a4 32. Bf7 Qf6 33. Be6 f4 34. Qe1 Rc6 35. Rxe4 1-0

Sicilian Najdorf B90

Francisco Guadalupe II 2137

1. h4

Mikhail Langer 2277

Three In-Vince-ible Masters and a Young Champion

Texas Team 2006 (2)

1. e4 c5 2. Nf3 d6 3. d4 cxd4 4. Nxd4 Nf6 5. Nc3 a6 6. a4 g6 7. Be2 Bg7 8. Be3 O-O 9. O-O Nc6 10. Kh1 Bd7 11. f4 Rc8 12. Nxc6 Bxc6 13. Bf3 Qa5 14. Qd3 Nd7 15. Bd2 Qc7 16. b3 Nc5 17. Qe3 Ne6 18. Ra2 Nd4 19. Bd1 b6 20. Ne2 Ne6 21. Ng3 Qb7 22. f5 Nc5 23. Re1 e6 24. Bf3 exf5 25. exf5 Rfe8 26. Qxe8+ Rxe8 27. Rxe8+ Bf8 28. Bh6 Nd7 29. Bg4!



White forfeited on time in this winning position. Fritz gives 29. ... Bxc6+ 30. Kg1 Bf3 31. fxc6 hxc6 32. Bxd7 Qxd7 33. Rxf8+ Kh7 34. Bd2 +-.

Scotch Game C45

Mikhail Langer 2277

Three In-Vince-ible Masters and a Young Champion

William Molina 2058

Furios

Texas Team 2006 (3)

1. e4 e5 2. Nf3 Nc6 3. d4 exd4 4. Nxd4 Nf6 5. Nxc6 bxc6 6. e5 Qe7 7. Qe2 Nd5 8. c4 Nb6 9. f4 Qe6 10. b3 a5 11. Qc2 a4 12. Bb2 Bb4+ 13.

Nd2 axb3 14. axb3 Rxa1+ 15. Bxa1 Qg4 16. Qe4 O-O 17. Bd3 g6



18. h3 Qe6?!

18...Qg3+ 19.Ke2 d5 20.Qf3 =; 18...d5! 19.exd6 Qg3+ 20.Kd1 Bxd2 21.Kxd2 Bf5 22.Qd4 Qxg2+ 23.Be2 f6 24.Re1 Rd8 += (Fritz).

19. Qe2 d5 20. O-O Ba6

Safer but rather passive is 20... f5 21. Nf3 Qe7 22. Nd4 ±.

21. f5 Qe7 22. e6!? dxc4

On 22. ...fxe6 23. fxe6! (threat: Qe5) Black cannot stave off disaster on the long diagonal for long: 23...Bd6 24.Nf3 Bc8 25.Kh1! (taking away the ...Bc5+ and ...d4 defense. Now if 25. ... Qxe6? 26. Qb2 +-) 25. ...c5 26. cxd5 Nxd5 27. Qb2 Qf6 28. Bc4! Qb2 29. e7!! +- (Fritz).

23.bxc4 fxe6 24. f6 Qc5+ 25.Kh1 Bxd2 26.Qxd2 Rf7 27.Qc2 Qg5 28. Re1 Bc8 29.Qf2 Qa5 30.Qg3 Na4



31. Rd1

31. Bxg6 hxg6 32. Qxg6+ Kf8
 33. Qh6+ Ke8 (33...Kg8 34. Re3 +-)
 34. Qh8+ Rf8 35. f7+ Kxf7 36.
 Rf1+ +.
 31... Qh5

Or 31... Bd7 32. Bxg6!, winning
 as in the previous note.

32. Be2! Qh6

32... Qxe2 33. Rd8+ Rf8 34. f7+
 Kxf7 35. Qf4+ Ke7 36. Qxf8 mate.
 33. Rd8+ Rf8 34. Qxc7 1-0

Center Counter B01

Francisco Guadalupe II 2132

1.h4

Selby Anderson 2270

Jimbo's Heroes Ride Again

Texas Team 2006 (3)

1. e4 d5 2. exd5 Nf6 3. Nc3 Nxd5
 4. Bc4 Nb6 5. Bb3 Nc6 6. Qf3

6. Nf3 Bf5 7. d4 e6 =.

6... e6 7. Nge2 Be7 8. d3 O-O 9. a3
 Kh8 10. Be3 e5 11. g4

11. Nd5 Nxd5 12. Bxd5 Bg4 13.
 Qxg4 Qxd5 14. Nc3 Qd6 15. O-O-O
 =.

11... f5 12. gxf5 Bxf5 13. Qg2 Nd4
 14. Bxd4 exd4 15. Ne4 Bh4 16. O-
 O-O Bxe4 17. Qxe4 Bxf2 18. Qxb7
 a5 19. Kb1 a4 20. Ba2 Rb8 21. Qc6
 Qe7

Even better is 21... Rf6!

22. Nc1 Rf6! 23. Qb5



Step by step, Black is increasing
 his control of the b-file.

23...c6 24. Qa5

24.Qa6 Qc7! and the threat of
 ...Ra8 forces 25.Qa5 Qb7, transpos-
 ing to the game.

24... Qb7 25. b4

25. Qb4 Rf5 26. Rhf1 Rb5 +.

25... axb3 26. Bxb3

26.Nxb3 Nd5 27.Ka1 Ne3! 28.
 Rd2 Rf5 29.Qb4 Qa7 30.Qd6 Rd5
 31.Qxc6 Qxa3 32.Rxf2 Ra5 33.Kb1
 Nd5! + or 33.c4 Qxb3 +.

26... Ra8 27. Qb4 c5 28. Qb5 Qc8
 29. Na2 Rxa3 30. Rhf1 Nd7 31. h4
 Bxh4 32. Rh1 Bg5 33. Rh5 h6 34.
 Rdh1 Rb6 35. Qc4 Qa8 36. Rxg5
 Raxb3+ 0-1

English Opening A33

Jim Rohrbaugh 2200

Jimbo's Heroes Ride Again

Warren Harper 2103

1.h4

Texas Team 2006 (3)

1. c4 Nf6 2. Nc3 c5 3. Nf3 Nc6 4.
 d4 cxd4 5. Nxd4 e6 6. Ndb5 Bc5
 7. Nd6+ Ke7 8. Nde4 Bb4 9. Nxf6
 gxf6 10. Bd2 Qc7 11. a3 Bxc3 12.
 Bxc3 b6 13. e4 Qf4 14. f3 Rg8 15.
 Qd2 Qxd2+ 16. Kxd2 Bb7 17. Ke3
 Rac8 18. g3 Ne5 19. b3 d5 20.
 exd5 exd5 21. Bb4+ Ke6 22. Bh3+
 f5 23. Rhe1 Ng6 24. Kf2+ Kf6 25.
 Bc3+ Kg5 26. f4+ Kh6 27. Bxf5
 Rc7 28. Rac1 dxc4 29. bxc4 Ba6
 30. Bd3 Rgc8 31. f5 Bxc4 32. Bxc4
 Rxc4 33.Bd2+ Kg7 34. fxc6 hxg6
 35. Rxc4 Rxc4 36. Rc1 Ra4 37.
 Bc3+ Kf8 38. Bf6 Ke8 39.Rd1 1-0

Modern Benoni A66

Selby Anderson 2270

Jimbo's Heroes Ride Again

Mikhail Langer 2277

*Three In-Vincible Masters and a
 Young Champion*

Texas Team 2006 (4)

1. d4 Nf6 2. c4 c5 3. d5 e6 4. Nc3
 exd5 5. cxd5 d6 6. e4 g6 7. f4
 Qe7!?

Twice before Langer and I have
 explored 7... Bg7 8. Bb5+ Nfd7.

8. Bb5+?!

Found over the board. I failed to
 notice that 8. Nf3! does not involve
 a pawn sac (8...Nxe4?? 9.Qa4+).

8... Bd7 (8...Nbd7 ∞ Gufeld) 9.
 Qe2?!

9. Bd3 b5 (9... Bg7 10. Qb3! ±)
 10. Qe2 b4 (10... c4!) 11. e5 dxe5 12.
 d6! Qd8? (12... Qe6 13. Bc4 Qf5 14.
 Nb5 Na6 15. fxe5 ±) 13. Nb5 Bc6?
 (13... Na6) 14. Nc7+ Kd7 15. fxe5
 Bxd6 16. exd6 +- Reinhardt-
 Estrada, Sao Paulo 1960.

9... Bxb5 10. Qxb5+ Nbd7 11. Nf3
 Bg7?!

11... Nxe4! 12. 0-0 0-0-0 13. Re1
 f5 14. Qa4 Kb8 15. Nxe4 fxe4 16.
 Rxe4 Qf7 =+ (Fritz).

12. O-O O-O 13. Re1 Nb6 14. a4
 Ne8 14...Rab8 15. a5 Nbd7 16. e5
 Ne8 17. Be3 ±.

15. a5 Nc7 16. Qb3 c4

Black has to sac a pawn one way
 or the other (i.e., (16...Nd7 17. Qxb7
 Rfc8). The text creates play for the
 knights at key dark squares c5 and
 b4 as well as opening up rook play
 on the c-file.

17. Qa2 Nd7 18. Qxc4 Rac8 19.
 Qf1!?

A feature of Gallagher's play
 was the pre-emptive defensive
 move, denying one's opponent the
 satisfaction of a one-move threat. In
 this case more logical is the Fritz
 line 19. Be3 Na6 20. Qb5 Nac5 21.
 Bxc5 Nxc5 22. e5 ±.

19... Na6 20. Bd2 Ndc5?!

Allowing White to play 21.e5
 turns out badly. Better is 20... Nac5
 21. Rab1 Nb3 22. Qb5 Nxd2 23.
 Nxd2 ±.

21. e5 Nb4

21... dxe5 22. fxe5 Nb3 23. Bg5
 Qd7 24. Ra3 +-; 21... Nb3 22. Rad1
 Nxa5 23. Nb5 Nc4 24. Nxa7 +.

22. Nb5! +- Nc2 23. Nxd6 Rcd8
 24. Qb5!

This denies ...b6, unlike 24. Qc4
 Nxa1 25. Rxa1 b6 26. axb6 axb6 27.
 Rd1 ±.

24... Na6 25. Nxb7

25. Rad1 Nxe1 26. Bxe1 Rd7 27. Bh4 +-.
 25... Rb8 26. Qxa6 Rxb7 27. b4 Qd7 28. d6 Rc8 29. Rad1 Nxe1 30. Bxe1 Bf8
 30... Rbb8 31. Qd3 Bh6 32. Bd2 Qa4 33. Re1 Qb5 34. Qxb5 Rxb5 35. Re4! +-.



31. e6! fxe6 32. Ne5 Qa4 33. d7!
 Messier is 33. Qxb7 Qxd1 34. Kf1 Qc1 35. Qf7+ Kh8 36. d7 Rb8 37. Qf6+ Kg8 38. Qxe6+ Kg7 39. Qf7+ Kh8 40. f5! Qf4+ 41. Nf3 Bxb4 42. Bg3 Qc1+ 43. Ne1 +-.
 33... Qxd1
 33... Rd8 34. Qxe6+ Kg7 (34... Kh8 35. Nf7+ Kg8 36. Nxd8+ Kh8 37. Bc3+ and mate next) 35. Qf7+ Kh6 36. Ng4+ Kh5 37. Nf6+ Kh6 38. Qxh7 mate.
 34. dxc8(Q) Qxe1+ 35. Qf1 Qxb4 36. Qxe6+ Kg7 37. f5
 "The roof is on fire."
 37... gxf5 38. Qexf5 Bc5+ 39. Kh1 Qh4 40. g3
 To gain the check at g4. Quickest is the Fritz line 40. Ng4! with a mate in six. Also good is Feldstein's suggestion of 40. Nd7, e.g. 40... Qd8 41. Nf7 Qd4 42. Ng5 and mate in six.
 41. Qg4+ Kh8 42. Qa1
 42.Nf7+! Qxf7 43. Qa1+ and mate in three (Fritz).
 42... Qg7 43. Qxg7+ Rxg7 44. Nf7+ Kg8 45. Nh6+ 1-0

French Defense C00
Martin Gordon 1953
James Gang Rides Again
Julian Hernandez 1778
Knights of the Square Table
Texas Team 2006 (4)

1. e4 e6 2. g3 c5 3. Bg2 Nc6 4. Nf3 g6 5. O-O Bg7 6. c3 Nge7 7. d4 cxd4 8. cxd4 d5 9. e5 Qb6 10. Nc3 O-O 11. Qd3 Nf5 12. Rd1 Bd7 13. Bg5 f6 14. exf6 Bxf6 15. Bxf6 Rxf6 16. Na4 Qc7 17. Nc5 b6
 Tempting and bad is 17...Ncxd4?
 18. Nxd7 Nxf3+ 19. Qxf3! Qd7 20.g4 ±.
 18. Nxd7 Qxd7 19. Qb5(?)
 Steadier is 19. Rac1.
 19...Nd6 20. Qe2



20...Raf8 21. Ne5?! (21.Rac1) Qb7?
 Pawn dividends offset the usually poor trade of two rooks for queen: 21... Nxe5! 22.dxe5 Rxf2 23.Qxf2 Rxf2 24. Kxf2 Nc4 -/+.
 22. Ng4! +- Nf5 23. Nxf6+ Rxf6 24. g4 Nfxd4 25. Qe3 Nc2 26. Qc3 N6d4 27. Rxd4 Nxd4 28. Qxd4 Rf8 29. Re1 Qc6 30. Rxe6 Qc1+ 31. Bf1 Rf4 32. Re8+ Kf7 33. Re1 Rxf4 34. Qxg4 Qxe1 35. Qd7+ Qe7 36. Qxd5+ Kg7 37. Qd4+ Kf8 38. Qh8+ 1-0

Anjali Datta annotates
 (continued from page 7)

Gives me the open file and an advantage. Better is 17...f6 consolidating the e-pawn.
 18.Rxd1 Qxh4 19.Qxe5 Qf2 20.Rd2 Qe1+ 21.Bd1 c6?!
 Only helps me. 21...f6 22.Qe7 Be8 is better.
 22.f4 f6 23.Qe7 Re8
 There is no defense against all of Whites threats, namely Rd7 and Rd8 followed by f5.



24.Rd8 Rxd8 25.Qxd8+ Kf7 26.f5
 Trapping the bishop.
 26...Qxe3+ 27.Qd2 Qxd2+ 28. Kxd2 Bxf5 29.gxf5
 White is in a clearly winning endgame, and though the game continued for some moves, it is not of importance.
 29...Ke7 30.c5 g6 31.Ke3 gxf5 32. Kf4 Ke6 33.Bb3+ Ke7 34.Kxf5 h5 35.Bd1 h4 36.Bg4 a6 37.Kg6 a5 38.Kh5 Kf7 39.Bf5 Kg7 40.Kxh4 Kh6 41.Bc8 Kg6 42.Bxb7 Kf5 43. Bxc6 Ke6 44.Bf3 Kd7 45.b4 axb4 46.axb4 Kc7 47.b5 Kc8 48.b6 Kb8 49.c6 Kc8 50.c7 f5 51.Be2 Kb7 52. Ba6+ Kxa6 53.c8Q+ Kxb6 54.Qxf5 Kc6 55.Qe5 Kb6 56.Qd5 Kc7 57. Qe6 Kb7 58.Qd6 Ka7 59.Qb4 Ka6 60.Kg4 Ka7 61.Kf5 Ka6 62.Ke6 Ka7 63.Kd7 Ka6 64.Kc6 Ka7 65. Qb7 mate 1-0

My experience at the World Youth Chess Championships

by Sylvia Yang

Far and beyond I went from Plano, Texas and got to this place called Belfort, France. This was my first time at WYCC, so I was very excited, but also very nervous. I overcame my nervousness after I won the first round easily. I soon began to feel more confident about playing the game. I really learned a lot from this wonderful tournament.

The most exciting part was the opening ceremony when all the players marched around the playing area. Each country had a player holding a flag, so that everyone could recognize where they were from. I never saw so many national flags at the same place before.

In my section, girls under 10, there were 91 players from different countries. There were 11 rounds in the tournament. I played against girls from Bulgaria, China, Russia, Australia, Canada, Sri Lanka etc. I exchanged gifts with some of my opponents at the beginning of the tournament. I received some unique gifts from my opponents.

I liked most of the tournament, but hated the part without air conditioning! Every day I got ice cream after my game because it was so hot! But also I had to eat similar food or maybe even the same food every day for the buffet. I hope the food next year will be much better than this time!

I want to take this opportunity to thank my brother Stanley for practicing with me, my coach Babakuli Annakov for teaching me all kinds of things, Luis Salinas, the president of the Dallas Chess Club for giving me many chances to practice. I also want to thank all the support from the Texas Chess Association and people who sponsored



me to go to the tournament. Thank all of you for making me in the position I am in now.

Last but not least, I want to share with you one of my favorite games. In the following game, I played the white pieces against a girl from Bulgaria:

Caro-Kann B14

Sylvia Yang (USA)

Aleksandra Ivanova (BUL)

2005 World Youth Girls' U-10

1. e4 c6 2. d4 d5 3. exd5 cxd5 4. c4 Nf6 5. Nc3 e6 6. Nf3 Bb4 7. a3 Bxc3+ 8. bxc3 Nc6 9. Bg5 O-O 10. Be2 dxc4 11. Bxc4 h6 12. Bh4 Qa5 13. Qd3 Nd5 14. Bxd5 Qxd5 15. O-O b6 16. c4 Qd7 17. d5 Bb7 18. Rd1 Nb8 19. Rfe1 exd5 20. cxd5 Re8 21. Rxe8+ Qxe8 22. Re1 Qa4 23. Re4 Qd7 24. Re7 Ba6 25. Rxd7 Bxd3 26. Rd8+ Kh7 27. Ne5 Bb5 28. Nc6 Bc4 29. Nxb8 Bxd5 30. Rxd5 Rxb8 31. Rd7 b5 32. Rxa7 b4 33. axb4 Rxb4 34. g3 Kg8 (Diag.)



35...g5 35. Bxg5 hgx5 36. Rxf7+ Kg6 37. Ra7 g4 38. Ra2! Kg5 39. Kg2 +- 35. Be7 Rb3 36. f4 Rb2 37. Bc5 Rc2 38. Bf2 Rc1+ 39. Kg2 Rc2 40. f5 f6 41. Kf3 Rc8 42. Ra2 Rc4 43. Be3 h5 44. h3 Kf7 45. g4 hxg4+ 46. hxg4 Rb4 47. Rc2 Ra4 48. Rc7+ Kg8 49. g5 fxg5 50. Bxg5 Ra5 51. Kg4 Ra4+ 52. Bf4 Ra6 53. Be5 g6 54. Rg7+ Kf8 55. Rxg6 Ra4+ 56. Kg5 Ra5 57. Bd6+ Kf7 58. Rf6+ Ke8 59. Re6+ Kd7 60. Re5 Ra8 61. Bb4 Black resigns 1-0

Dejmek bags GM Nakamura has narrow escape (okay, not really)

by NM Mark Dejmek

Plane fare to Philadelphia: \$214. Six-night hotel stay: \$608. Entry fee to World Open: \$225. Beating your first GM: priceless.

In what has become an annual pilgrimage for me, I made my way to Philadelphia this July to compete in the World Open. Although eligible to play in the Under 2200 Section, I opted to play in the Open Section, more or less choosing to go for glory rather than prize money. The competition in the Open Section is brutal, and in four previous attempts I had never even managed so much as an even score. Well, I got my even score this year and I did it the hard way, getting paired up in all nine rounds and taking out a couple of titled players along the way.

I got off to a good start in the first round, beating the talented youngster Zhe Quan, of Canada, who has recently earned his third and final IM norm. This set up a second round match-up with GM Gildardo Garcia. I was not familiar with Garcia and at least in the early rounds his title was not listed on the wall chart, so during the game I actually did not know that I was playing a GM. This was probably a good thing for me psychologically! It was not until after the game that I learned I had beaten my first GM.

I always thought my first win over a GM would come in some wild tactical melee, full of crazy sacrifices and unexpected turns. But as you'll see, the game was decidedly unspectacular, almost routine. White got an opening edge, won a little material, and brought home the full point.

Sicilian Dragon B35

Mark Dejmek 2155

Gildardo Garcia 2522

World Open 2005

1.e4 c5 2.Nf3 Nc6 3.d4 cxd4 4.Nxd4 g6 5.Nc3 Bg7 6.Be3 Nf6 7.Be4 Qa5 8.0-0 d6?!

I believe this is a subtle mistake. More flexible is 8...0-0 when Black can answer 9.Nb3 Qc7 10.Bg5 with something like 10...a6 intending to meet 11.Bxf6?! with 11...Bxf6 12.Nd5 Qe5 =.

9.Nb3 Qc7 10.Bg5!?

ChessBase indicates that this is a novelty, although I personally have played the move once previously. 10...0-0

Dejmek-Lank (Southwest Open, 2003) continued 10...Na5 11.Bxf6 Bxf6 12.Bb5+ Nc6 13.Nd5 with an edge for White. Perhaps best is 10...Qd8 when at the very least White can play 11.Be2 with an extra tempo in a normal Dragon line.

11.Bxf6 exf6



I have played positions of this sort for both sides. Black's position is optically hideous, but in practice it is not so easy for White to capitalize. Black's two Bs are not to be underestimated, and he continually threatens to liquidate a weakness with either d6-d5 or f6-f5. 12.Nb5 Qe7 13.Re1 Rd8 14.f4 Be6 15.Bxe6!?

A difficult decision. White deuglies Black's pawns, but he gets rid of one of the bishops and softens up the light squares. In particular, I had dreams of plunking a knight on e6.

15...fxe6 16.f5 d5

A surprise. I had expected something like 16...gxf5 17.exf5 e5 18.N5d4 (or 18.Qd5+) with some advantage to White.

17.exd5 Qb4?!

He was anxious to avoid the endgame after 17...Rxd5 18.Qxd5 exd5 19.Rxe7 Nxe7 20.N3d4 ±, but this was this lesser of evils. The middle-game is considerably worse for him.

18.Qe2 exd5 19.c3 Qf4 20.N3d4

20.fxg6 hxg6 21.Qe6+ is also quite good for White.

20...Ne5

Black was in a lot of trouble here. A pretty line was 20...Re8 21.Qxe8+! Rxe8 22.Rxe8+ Kf7 23.Ne2 and Black has to give up the queen to prevent 24.Nd6 mate. Relatively best was 20...Nxd4 21.Nxd4 Qd6 22.Qg4 Qd7 23.Ne6 ±.

21.fxg6 hxg6 22.Ne6 Qh4 23.Nxd8 Rxd8 24.Nd4+-



White is up an Exchange with the better position and no weaknesses. In addition, Black had been laboring at the board and now had something like five minutes left to get to move 40. What follows is a

little sloppy, but White eventually gets the job done.

24...f5 25.Nf3 Nxf3+ 26.Qxf3 d4 27.cxd4?! Qxd4+ 28.Kh1 Qxb2 29. Rab1 Qxa2 30.Rxb7 a5 31.Qg3 Qd2 32.Rg1 Qd6 33.Qb3+ Qd5 34. Qb6

Too bad. 34.Rd1! would have been a nice capper.

34...Rd6 35.Qa7 Qd4 36.Qxa5 f4 37.Qa2+ Kh7 38.Qf7 Rd8 39.Rb3 Rd5 40.Rh3+ Rh5 41.Rxh5+ gxh5 42.Qxh5+ 1-0

My reward for winning this game was that in the next round I got paired with reigning U.S. Champion, Hikaru Nakamura. I couldn't believe my luck! Irina Krush had nicked him for a draw in Round 2, so he was the highest-rated 1.5/2, and since I was the lowest-rated 2/2, I got to take a crack at him. This is the first time I have ever played anyone who out-rated me by a full 600 points!

Sicilian Irregular B20

GM Hikaru Nakamura 2756
Mark Dejmek 2155

World Open 2005

1.e4 c5

All right - Sicilian. Maybe I'll get to hit him with that novelty I have on move 17 of the main line Dragon...

2.Qh5

Maybe not.

2...d6 3.f4 Nc6 4.c3

My original intention was ...g6 and ...Bg7, but he just drops the queen back to h4 with a very reasonable Grand Prix Attack type position. So I went with Plan B.

4...Nf6 5.Qf3 e5 6.f5 d5 7.d3 b6 8.g4

I burned a lot of time around here trying to find a way to make a ...Nxe4 sac work, but there's nothing there. White seems to have a

timely Bb5 (with or without check) in all lines.

8...Bb7 9.g5 dxe4 10.dxe4 Nd7 11.Be3 Qc7 12.Nd2



12...Nd4!?

Okay, I gave in to the dark side here. I could no longer resist my urge to sac a piece against the top player in the country. Objectively better was 12...0-0-0 13.0-0-0 with maybe a small edge to White.

13.cxd4 cxd4 14.Bf2 Qc2

Minor victory here: I made the boy think! He had been banging out his moves most of the way, but here he took a good 10 or 15 minutes to decide on the best way forward. The plan he comes up with is safe and effective.

15.Bd3 Qxb2 16.Rb1 Qxa2 17.Qe2 a5?

My play starts to go downhill from here. Fritz thinks the play is roughly balanced after 17...Rc8! for example, 18.Bg3 (18.Ngf3 Qxb1+ 19.Nxb1 Rc1+ 20.Kd2 Rxh1∞) 18...Rc3 19.Ngf3 Ba6! 20.Bxa6 Re3. 18.Ngf3 Bb4 19.0-0 0-0

Probably not the best, but it's all bad for Black from here: 19... Bxd2 20.Nxd2 Qa3 21.Bb5 ±; 19...f6 20.Bc4 Qa3 21.Rb3 Qa4 22.Bb5 Qa2 23.Qc4 +.

20.Bc4 d3 21.Qxd3 Nc5 22.Qe3 Qa4 23.g6!

White's attack is unstoppable.

23...Rad8 24.Bxf7+ Kh8 25.f6 Bxd2 26.Nxd2



26...Nxe4

Black is totally lost here, and I thought about allowing him the beautiful finish after 26...Rxd2 27. Qh6! gxh6 28.g7 mate.

27.Nxe4

There were faster ways to win, but this is a safe, sure thing.

27...Qxe4 28.Qxe4 Bxe4 29.Rxb6 hxg6 30.fxg7+ Kxg7 31.Re1 Bd3 32.Bb3 Rf5 33.Re3 Rg5+ 34.Rg3 Rxg3+ 35.Bxg3 Re8 36.Rb7+ Kh6 37.Be1 Rf8 38.Bd2+ g5 39.h4 Rf1+ 40.Kg2 Be4+ 41.Kxf1 Bxb7 42. hxg5+ Kg6 43.Ba4

White's lone pawn will reach the finish line after the king comes up to help. 1-0

The following morning, I got paired with the well-known New York IM Jay Bonin, and I played arguably my best game of the tournament.

Sicilian Dragon B28

Mark Dejmek 2155
Jay Bonin 2385

World Open 2005

1.e4 c5 2.Nf3 a6

This was my first time facing the O'Kelly Sicilian in a tournament game. In offhand games, I have often played 3.b4! here, but I opted

for something more solid in this game.

3.c4 d6 4.d4 Bg4 5.dxc5 Qa5+

Apparently, 5...Bxf3 is more commonly played here.

6.Nc3 Qxc5 7.Nd5!

Black is already in difficulties. The weakness on b6 (created on move 2) is starting to be noticeable. 7...Nd7 8.Be3 Qc6

(Diagram)

On 8...Qc8, 9.Qa4 is hard to meet. 9.Nd4! ±

I saw Bonin roll his eyes toward the heavens when I played this, as he knew he was in for some extended torture.

9...Qxd5

Forced.

10.cxd5 Bxd1 11.Kxd1 Rc8 12.g3!

In such positions, the light-squared bishop belongs on the h3-c8 diagonal, where it will help White to eventually take control of the c-file.

12...g6 13.Bh3 Bh6 14.Kd2 Bxe3+ 15.Kxe3 Ngf6 16.Rac1 0-0 17.Nb3

Also good is 17.b4.

17...h5 18.f3 h4 19.Na5



Black cannot hold both the b-pawn and the c-file after this. Something's got to give.

19...hxg3 20.hxg3 Rc5 21.b4 Rxa5

On 21...Rb5 White has the simple 22.a3±

22.bxa5 Nc5 23.Rb1 Kg7

Bonin offered to split the point here, perhaps hoping for a "draw by reputation." But White has no real reason to think about accepting.

24.Kd4 Nh5 25.Rhc1

Maybe this isn't the cleanest way to close, but it looked simple enough to me at the time.

25...Nxg3 26.Rxc5!? dxc5+ 27.Kxc5

So, White has given back the Exchange, but he's still up material. He's up a whole king!

27...Rh8 28.Bd7 Rh2 29.a4 Rc2+ 30.Kb6 Rc3 31.Kxb7 Rxf3 32.Kxa6 Nxe4 33.Bc6

33.Kb6!? also works, e.g., 33...Nc3 34.a6! Rf6+ 35.Bc6 Rd6 36.a7 Rd8 37.Kc7+..

33...Nd6 34.Rb4 Rc3 35.Kb6 e6

On 35...Nc4+, White sacs another Exchange with 36.Rxc4 Rxc4 37.a6+.

36.Kc7 Ne8+ 37.Kb8 Nd6 38.a6 exd5 39.Bb7

White avoids one last trap. After 39.a7? Rxc6 40.a8(Q) Rc8+ 41.Ka7 Rxa8+ 42.Kxa8 Nc4 Black is still alive and kicking.

39...Rc4 40.Rxc4 dxc4 41.Bd5 c3 42.Bb3 Nc4 43.Kc7 1-0

After this red-hot start, I cooled off a little, losing consecutive games to GM Sharavdorj and former Texas State Champ Miles Ardaman. I then went win-loss-draw in rounds 7-9 to wind up at an even 4.5-4.5. All in all, a great tournament! I came home with some great memories, a load of rating points, and, of course, a GM scalp. ♣

A few other things happened at the World Open. Another familiar face in Texas tournaments, UT-Dallas student **IM Magesh Panchanathan**, tied for first to made his third and final GM norm! He scored 7.5-1.5, tying Polish GM Kamil Miton, who won the blitz tiebreak match.



GM Magesh Panchanathan

Panchanathan got a lot of encouragement from the Indian players who traveled 24 hours to compete in the tournament. The 21-year old IM becomes the twelfth grandmaster in the history of India.

He first gained wide attention in late 2004 for his stunning upset of GM Alexander Onischuk, then the highest rated player in the US, at the Pan-Am Intercollegiate.

Panchanathan lost only to GM Christiansen while also scoring a tournament high of seven wins. His most crucial wins were probably against Ehlvest and his thrilling last-round victory over Shabalov which went down to queen vs. rook. After his win, he would tie with Miton for the tournament lead. Miton agreed to play a tiebreak blitz game playing the white pieces with 7:5 draw odds. Thus, all Panchanathan needed was a draw to win the overall title.

Despite Miton's overall victory the attention was on Panchanathan, who had clinched a GM norm after eight rounds. After his ninth round win over Shabalov, he was mobbed by the Indian players in an impromptu celebration – a wonderful sight!

– The Chess Drum

Simutowe wins Texas State Championship

IM Amon Simutowe, 23, won the 2005 Texas state championship last Memorial Day weekend with a 7-0 score. A Zambian student at UT-Dallas, he defeated the #2, #3, and #4 players in the lineup en route to his title. He is seeking his third GM norm to join UTD teammate Panchanathan in that exclusive club.

Simutowe was Zambian national champion at 14, and at 17 won his first GM norm and a silver medal for his strong 8-2 performance at the Olympiad in Istanbul. Last month he was equal first at the Governor's Cup (see page 33).



IM Amon Simutowe

Notes by NM Selby Anderson
(assisted by Fritz 5.32)

Modern Defense A42

Lee Gardner 2068
Larry Moss 2200

Texas State Ch. 2005 (1)

1. e4 g6 2. d4 Bg7 3. c4 d6 4. Nc3 Nc6 5. Be3 e5 6. Nge2 exd4

The sharper 6...f5 has a following as well. I have found the text line a tough nut to crack.

7. Nxd4 Nge7 8. Be2 f5 9. exf5 Nxf5 10. Nxf5 Bxf5 11. Rc1!

White's rooks are on target.

11...0-0 12. 0-0 Qd7 13. Qd2

If you put White's Rc1 on d1 you have my game with Moss from the 2005 Fiesta Open. After 13... Ne5 14. Bh6(?) Bxh6 15. Qxh6 Qg7 Black had no complaints.

13...Rae8 (13...Ne5!?) 14. Rfd1



14...b6

14...Qf7 15. Bf3 Be6 16. Bd5 Re7 17. Ne4 Bxd5 18. Ng5 Qf5 19. cxd5 Nd8 20. Nf3 =.

15. c5 bxc5 16. Bb5 Be6?!

16...Re5 17. b4 Bg4 18. Re1 a6 19. Ba4 Be6 20. bxc5 d5 =.

17. Bxc5 Rb8

17...a6 18. Ba4 (18. Bxa6 Nb8) dxc5 19. Qxd7 Bxd7 20. Rxd7 Nd4 21. Kf1 ±.

18. Bxc6 Qxc6 19. Bxa7 Rb7 20. Bd4 Bxd4 21. Qxd4 Rxb2

21...Qe8 22b4 Qf7 23. a4 ±.

22. Nd5 +- Qxd5 23. Qxb2 Qxa2 24. Qxa2 Bxa2 25. Rd2 Bb3 26. Rxc7 d5 27. Rb2 Bc4 28. Rbb7 Rd8 29. Rg7+ Kf8 30. Rxb7 d4 31. Rhd7 Re8 32. f3 d3 33. Rb4 Rc8 34. Kf2 Ke8 35. Rxc4 Rxc4 36. Rxd3 Ke7 37. Kg3 Ke6 38. h4 Rb4 39. f4 Rb2 40. Kf3 Rb1 41. Kg4 Rg1 42. g3 Rh1 43. Kg5 Kf7 44. Rd7+ Ke6 45. Rg7 1-0

English Opening A37

Jim Rohrbach 2220

David W. Phillips 2023

Texas State Ch. 2005 (2)

1. c4 e5 2. Nc3 Nc6 3. Nf3 e5

3... Nd4! = is state of the art.

4. g3 g6 5. Bg2 Bg7 6. 0-0 Nge7 7. Ne1 0-0 8. Nc2 d6 9. Ne3 a6 10. Rb1 Rb8 11. d3 b5 12. Ncd5 Nxd5 13. Nxd5 Ne7 14. Bg5 f6 15. Bd2 Nxd5 (13...Bb7 =) 16. Bxd5+ Kh8 17. b4 cxb4(?) (17...Bb7 =) 18. Rxb4 Bd7 19. cxb5 a5?!

Creating a target for White's bishop - better is 19...Rxb5. 20. Rb2 Bh3?!!



After a quiet opening started to go south, Phillips throws down the gauntlet with a spectacular gamble. It is not sound, but it certainly changes the psychology of the game.

The alternative was 20...Rxb5 21. Rxb5 Bxb5 22. Qb3 Bd7 23. Rc1, and White is having all the fun.

21. a4

21. Re1 f5 22. e4 f4 23. a4 Qb6 24. Bc3 fxg3 25. hxg3 Rbc8 26. Qd2 Rf3 27. Kh2 +-.

21... Bxf1 22. Qxf1 f5 23. Qe1 f4 24. Bxa5 Qg5 25. Bc7??

Overlooking the double discovery Black has just threatened. White is clearly better after 25.

Rb1 Qe7 26.b6 Rfc8 27.Bd2 Rc5 28.
Bg2 fxc3 29.hxc3 Qd7 30.a5 +-.
25...e4 26.dxe4

26.Bxb8 Rxb8 27.Rb4 Qxd5 28.
Rxe4 =.
26... Bxb2 27.Bxb8 fxc3 28.hxc3
Rxb8 29.Qb4 Be5 30.Kg2 Rf8 31.
b6

Or 31.Qe1 Qf6 32.f4 Bc3 33.Qd1
Ba5 +.

31... Qc1

31...Rxf2+! 32.Kxf2 Bxc3+ 33.
Kg2 33.Kf3 (33..Kg3 Be1+ -+.)
Qf4+ 34.Kg2 Qf2+ 35.Kh3 Qh2+
36.Kg4 Be5 and White cannot stop
mate at both g3 and h5.

32. a5



32...Bxc3! 33.f4 Bxf4 34.b7 Be5
35.Bf7 Qg5+ 36.Kf1 Rxf7+ 37.Ke1
Qc1 mate 0-1

Benoni A43

Thomas Crispin 2202

Mark Dejmejk 2160

Texas State Ch. 2005 (2)

1.d4 Nf6 2.Nf3 c5 3. d5 b5 4.Bg5
Qb6 5. Nc3 b4

5...Bb7 6.e4 b4 7.Na4 Qa5 8.Bxf6
exf6 9.b3 d6 10.Bd3 ±.

6. Bxf6

6. Na4 Qa5 7. Bxf6 gxf6 8. b3 ±.
6...exf6!? 7.Na4 Qc7 8.b3 d6 9.c3

9. e4 a6 (9... Be7 10. Bb5+) 10. c3
bxc3 11. Nxc3 g6 =.

9...bxc3 10.Nxc3 g6 11.Rc1 Bh6
12.e3 0-0 13.Be2 f5 14.0-0 Qe7 15.
Re1 Nd7 16.b4 cxb4 17.Nb5 Nc5

18.Nfd4 Bd7 19.Nc6 Qf6 20.Rc4
a5



21.Qc2

21.Qd4! Qxd4 22.exd4 Ne4 23.
Nc7 Bxc6 24.dxc6 Rac8 25.Nd5
Kg7 26.c7 Nc3 27.Nxc3 bxc3 28.
Bf3 ±

21...Ne4 22.Bd3 Bg7?

22...Bxc6 23.Rxc6 (23.dxc6 d5
=) Rab8 =.

23.Bxe4 fxe4 24.Qxe4 Qb2 25.Rc2
Rfe8 26.Qc4

26.Qxe8+ Rxe8 27.Rxb2 Bxb2
28.Nxd6 ±.

26...Qf6

26...Bxc6 27.Rxb2 Bxb5 28.
Qxb5 Bxb2 29.Re2 Rec8 30.f4 Bf6
31.Qb6 ±.

27.Nc7 +- Bf5 28.Nxe8 Rxe8 29.
Rcc1 Qb2



30.Qb3?!

30.Nxa5! ... (a) 30...Ra8 31.Nc6
Rxa2 32.Rf1 Bh6 33.Qxb4 +-; (b)

30...Bc3 31.Rf1 Qa3 32.Qb5 Ra8
33.Nc4 Qa6 34.Qxa6 Rxa6 35. a3 +-.
30...Qxb3 31.axb3 Bb2 32.Rc4
Bd3 33.Nxa5?

33.Rh4 Bc3 34.Rc1 Ra8 35.f3
Bf6 36.Rh3 a4 37.Nxb4 Bf5 38.bxa4
Bxb3 39.gxb3 ±.

33...Ra8 -/+ 34.Nc6 Bxc4 35.bxc4
35. Nxb4 Bxb3 +

35...Bc3 36.Rb1 b3 37.g4 b2 0-1

Playing the 3-day schedule, Simu-
towe has to pull some finesses to
put away a former San Antonio
high school star.

Queen's Indian E12

Amon Simutowe 2454

Alex Echeverry 2000

Texas State Ch. 2005 (2)

1.d4 Nf6 2.c4 e6 3.Nc3 b6 4.a3
Bb7 5.Bg5 Be7 6.Qc2 d5 7.Nf3
Nbd7 8.cxd5 exd5 9. e3 a6

9...0-0 10.Bd3 Ne4 =.

10.Bd3 Rc8 11.Bf5 c5 12.0-0 g6
13.Bh3 h6 14.Bxf6 Bxf6 15.Ne5
Nxe5 16.dxe5 Bxe5 17. Bxc8 Qxc8
18.Rad1 Qe6 19.f4 Bc7 20.Qd3 0-0
21.Nxd5 Bxd5 22.Qxd5 Qxe3+
23.Kh1 Bxf4 24.Rde1 Qd2 25.Qf3
Bg5?!

Better is 25...Bc7! protecting the
hinterland: 26.Re6 Qd8 27.Rf6 Qe7
28.b3 Bd8 =.



26.Re6! Qxb2

For complete standings see USCF
website under ratings/tournaments.

Now 26...Qd8 doesn't work as well: 27.Rc6! Δ 28.Qb3 and Black has to lose a pawn.

27.Rxg6+ Kh7 28. Rd6 Kg7 29. Qg4 Qb5 30.Rfd1 f5 31.Qh5 Qe8 32.Qf3 Rf7

32... Qe4 33.Rxb6 Qxf3 34..gxf3 Rf6 35.Rd7+ Kg6 36.Rdd6 +-. 33.Rxb6 +- Qc8 34.Rc6 Qf8 35. Rxa6 f4 36. Rc6 Rf6 37.Rd7+ Kg6 38.Qd3+ Kh5 39.Rxf6 Qxf6 40. Qd1+ Kh4 41.Rd3 1-0

This game is like a tutorial in using the pawn chain as an attacking force.

Sicilian B20

Rudy Tia 2120
J.P. Hyltin 2044

Texas State Ch. 2005 (2)

1.e4 c5 2.d3 Nc6 3.g3 e6 4.Bg2 g6 5.f4 d6 6.Nf3 Bg7 7.0-0 Nge7 8.c3 Rb8

8...0-0 9.Be3 b6 10.d4 Ba6 11.Re1 cxd4 12.cxd4 d5 13.e5 Rc8 =. 9.Be3 0-0 10.d4 cxd4 11.cxd4 d5 12.e5 b6 13.Nc3 Ba6 14.Re1 Qd7 15.Qd2 Rbc8 16.g4 Rc7 17.Rad1 Rfc8 18.Qf2 Na5

18...Nb4 19.Bf1 Bxf1 20.Rxf1 a6 21.Nh4 =. 19.Qh4 b5 20.Bf1 Nc4 21.Bc1 b4 22.Ne2 Rf8 23.Ng3 Rc6 24.Bd3 Na5 25.Bb1



White has prepared the f5 break with admirable consistency, while denying queenside penetration. The

term "strategically won position" would not be too strong.

25...f5

25...Rb8 26.f5 exf5 27.gxf5 Nxf5 28.Nxf5 gxf5 29.Qh5 h6 30. Nh4 Rbb6 31.Kh1 b3 32.axb3 Nxb3 33.Nxf5 Rg6 (33...Nxc1 34.Qg4 +-) 34.Nxg7 Rxg7 35.Bf5 Re6 36.Rg1 +.

26.exf6 Bxf6 27.Qh3 Bc8 28.Ne5 Bxe5 29.fxe5



29...Rxc1

Here's a long fantasy variation courtesy of Fritz: 29...Ba6 30.Bg5 Rf7 31.Bf6 b3 32.axb3 Nxb3 33. Qh6 Qb7 34.h4 Qb6 35.h5 Nxd4 36.Kh1 Nc2 37. Bxe7 Rxe7 38.hxg6 Qb3 (38...Rg7 39.Nh5 Rxg6 40. Nf6+ Rxf6 41. exf6 Rc7 42.Re5 +-) 39.Rf1! Bxf1 40.Rxf1 Rc8 41.g7 Ree8 42.Ne4!! dxe4 43.Ba2! Qxa2 44.Qf6 (now ...Qb7 is impossible) h6 45.Qf7+ Kh7 46.g8(Q)#. 30.Rxc1 b3 31.Qh6 Ba6 32.Nh5 1-0

Caro-Kann B14

Magesh Panchanathan 2479
Michal Kujovic 2315

Texas State Ch. 2005 (2)

1.e4 c6 2. d4 d5 3.exd5 cxd5 4.c4 Nf6 5.Nc3 e6 6.Nf3 Bb4 7.cxd5 Nxd5 (7...exd5 =) 8.Bd2 0-0 9.Bd3 Nc6 10.0-0 Bd7

10...Be7 11.a3 Bf6 12.Qc2 h6 13. Rad1 Bd7 14.Nxd5 exd5 15.Qb3 ± Suba-Petrosian, Tallinn 1983.

11.Qe2 Nf6 12.Rad1 Rc8 13.Bb1 Qa5 14.Bg5 Bxc3 15.bxc3 Qxc3 16.Rd3 Qa5



17.Ne5 Rfd8 18.Bxf6 gxf6 19.Ng4 19.Qh5 Nxe5 (19...fxe5? 20.Qh6! Ne7 21.Ra3 +-) 20.dxe5 Qxe5 21. Qh6 f5 22.Qd2 Qc7 23.Rd1 Kf8 =. 19...Be8??

Pluck and luck pay off for Panchanathan. Black is defending with 19...Qg5 20.Rg3 (20.f4 Qg7 21. Rg3 Kf8) Kf8 =+. 20.d5 + Rxd5 21.Rxd5 exd5 22. Nxf6+ Kf8 23.Nxh7+ Kg7 24. Qg4+ 1-0

A brilliant touch marks the next two games, with blazing attacks by Phillips and Dejmek.

Sicilian Najdorf B99

David W. Phillips 2023
Brad Sawyer 2135

Texas State Ch. 2005 (3)

1.e4 c5 2.Nf3 d6 3.d4 cxd4 4. Nxd4 Nf6 5.Nc3 a6 6.Bg5 e6 7.f4 Be7 8.Qf3 Qc7 9.0-0-0 Nbd7 10.g4 b5 11.Bxf6 Nxf6 12.g5 Nd7 13.f5 Bxg5+

13... Nc5! ∞. 14.Kb1 Ne5 15.Qh5 Qe7 15...Qd8 16. Rg1 Bf6 17. fxe6 0-0 18.Bh3 g6 19.Nd5 Kh8 20.Qe2 fxe6 21.Bxe6 Re8 22.Bxc8 Rxc8 23.h4 Nc4 24.h5 Bxd4 25.Rxd4 ± Mecking-Quintereros, Manila (izt) 1976. 16.Rg1

16.Nxe6 Bxe6 17.fxe6 g6 18.
exf7+ Kxf7 19. Qe2 ±.
16...Bf6 17.fxe6 Bxe6 18.Nxe6 g6
18...Qxe6 19.Nd5 Qd7 (19...Ra7?
20.Bh3 traps the queen) 20.Nb6 ±.



19.Nc7+! Qxc7 20.Nd5! Qd8 21.
Qh6 Nd7

21...Rc8 22.Bh3 Rc5 23.Rgf1 Bg5
24.Qg7 Rf8 25.Be6 b4 (a) 26.Nf6+
Bxf6 27.Rxf6 Qe7 28. Bb3 +-, (b)
25...Rc4 26. Qxh7 Rxe4 27.Bxf7+
Nxf7 28. Rxf7 Rxf7 29.Qg8+ Rf8
30.Qxg6+ Rf7 31.Qxe4+ Kf8 32.h4
Bh6 33. Qg6 +.

22.Bh3 Nb6 23.Nxf6+ Qxf6 24.e5
dxe5 25.Rgf1 Qe7 26.Qg7 Rf8 27.
Bg2 Rc8 28.Rf6 Qc5 29.Be4 Nc4

29...a5? 30.Rfd6 Δ 31.Qf6 +-;
29...Nd5! 30.Rxa6 Ne7 31.Rad6 Qc4
32.Bd3 Qc5 33. Qxh7 ±.



30.Re6+! Qe7

Forced, as 30... fxe6 allows 31.
Qd7 mate.

31.Rxe7+ Kxe7 32.b3 Rg8 33.Qh6
Nd6 34 Qe3 Rge8
34...Rgd8 35.Bxg6 +-, 34...Rcd8
35. Qc5 Ke6 36.Qd5+ Kf6 37.Rf1+
+.
35.Qa7+ Ke6 36.Bd5+ 1-0

French Defense C10

Mark Dejneke 2160

Andres Suarez 2092

Texas State Ch. 2005 (3)

1.e4 e6 2.d4 d5 3.Nc3 dxe4 4.
Nxe4 Nd7 5.Nf3 Ngf6 6.Nxf6+
Nxf6 7. Bd3 Be7 8.Qe2 h6!?

8...0-0 9. Bg5 c5 10. dxc5 Qa5+
11. c3 Qxc5 12.0-0-0 ± (ECO).

9.Bd2 0-0 10.0-0 b6 11.c4 Bb7
12.Bc3 Qd6 (12...a6!?) 13.Ne5 b5
14.c5 (14. cxb5 a6 =) 14...Qd5 15.
Bxb5 a6?!

15...Qxa2 16.c6 Nd5! 17.Bd2 Ba3
18.bxa3 Qxa3+ 19.Kc2 Qa2+ 20.Kc1
(20.Kd3?? Qb3+) 20...Qa1+ =.

16.Bc4 Qxg2?

This is like sticking your head in
a lion's jaws. Better is 16...Qe4 ±.

17.c6! Bxc6

17...Bc8 18.Bd3! Qd5 19.Rhg1
Qxa2 20.Qe3 Kh8 21.Rxg7! +.

18.Rhg1 Qe4 19.Nxc6 Qxc6



20.d5! Qb6 21.Rxg7+! 1-0

Mate quickly follows 21...Kxg7
22.Rg1+ Kh7 23.Bd3+ Kh8 24.Qh5.

This next two games were played at
G/120 (three-day schedule).

Sicilian B41

Michal Kujovic 2315

Amon Simutowe 2454

Texas State Ch. 2005 (3)

1.e4 c5 2.Nf3 e6 3.d4 cxd4 4.Nxd4
a6 5.g3!? d5! 6.e5?!

6.Nf3 Nf6 7.exd5 =.

6...Qc7

6...Nc6 7.Nxc6 bxc6 8.Bg2 Qc7
9.Qe2 a5 -/+ Koc-Polugaevskiy,
USSR 1962.

7.f4 Bc5 8.Nb3 Ba7 9.Bd3 Nc6
10.Nc3 f6 11.Qh5+ Qf7 12.Qxf7+
Kxf7 13.exf6 Nxf6 14.Bd2 e5 15.
fxe5 Nxe5



Black's superior piece activity
outweighs his weak d-pawn and in-
convenient king position.

16.0-0-0 Neg4! 17.Rdf1 Nf2 18.
Rxf2 Bxf2 19.Rf1 Ba7 20.Nxd5
Bh3 21.Rf4 Rad8 22.Nxf6 gxf6 23.
Na5 Rd7 24.Rh4 Be6 25.Be4 b5
26.Nc6 Bc5 27.Bf3 h5!

Otherwise Bh5+ will cramp
Black's KR, e.g. 27...Bxa2 28.Bh5+
Kg8 (forced - 28...Kg7?? gets mated
after 29.Rg4+ Kf8 30.Bh6+, etc.)
29.Nb8 Ra7 30.Rg4+ Rg7 31.Na6
Rg4 32. Bxg4 Bd6 33.b3 h5 34.Bd7
Ba3+ 35. Kd1 h4 36.g4 ±.
28.b4?!

28.Rxh5 Rxh5 29.Bxh5+ Kg8
30.Nb8 Rd6 31.Bf4 Rb6 32.a3 =.

28...Bb6 29.Bc3?

29.Rxh5 =+. White doesn't get
another good opportunity to cap-

ture sy h5 –so he takes a bad one.

29...Bd5! 30.Bxh5+?

30.Bxd5+ Rxd5 +/-.

30...Rxb5 31.Rxb5 Bxc6 32.Bxf6?
Be3+! Taking away Rh6. 0-1

Sicilian Paulsen B43

Alex Echeverry 2000

Alex Chua 2187

Texas State Ch. 2005 (3)

1.e4 c5 2.Nf3 e6 3.d4 cxd4 4.Nxd4
a6 5.Nc3 Qc7 6.Be2 Nf6 7.a3

7.0-0 Bb4 8.Qd3 Nc6 9.Nxc6
dxc6 10. f4 0-0 11. e5 Rd8 12.Qh3
Bxc3 13. bxc3 Nd7 14.Be3 +=
7...b5 8.0-0 Bb7 9.Qd3 d6 10.f4
Nbd7 = 11.Bf3 Rc8 12.Bd2

12.Kh1 Be7 13.Qe2 0-0 14.g4
Nbd6 15.g5 Nfd7 16.Bg2 Rfe8 17.
Qh5 e5 18.Nf5 =.
12...Nb6 13.Rae1 e5 14.Nf5 Nc4
15.Bc1 g6

15...Nxa3!? 16.bxa3 Qxc3 17.
Nxd6+ Bxd6 18.Qxd6 Qc5+ =.
16.Ne3 Be7 17.Ned5



17...Nxd5 18.exd5

18.Nxd5! Bxd5 19.exd5 0-0 20.
f5 Qd8 21.b3 Nb6 22.Bh6 Re8 23.
fxg6 hxg6 24.Bg4 Δ Rxf7! +-.
18...0-0 19. f5 Qd8 20. Be4

20.Bg4! Rb8 21.b3 ...

(a) 21...Nb6 22.Bh6 Re8 23.fxg6
hxg6 24.Rxf7! +-;

(b) 21...Nxa3! 22.Bxa3 b4 23.f6
Bxf6 24. Bxb4 Bh4 25.Re3 Qb6 26.
Ba3 Bg5 27.Rfe1 f5 28.Bh3 f4 29.
Na4 Qa7 30. Bxd6 fxe3 31.Bc5 Qa8

32.Nb6 Qa7 33.Nd7 Qa8 34.Be6+
Kg7 35.Bd6 +-, a Fritz fantasy line.
20...Bg5 21.fxg6 hxg6 22.Bxg6
Bxc1 23.Bh7+ Kg7 24.Rxc1 Qh4
25.Bf5 Nxb2 26.Qe4?!

26.Qf3 Rc4 27.Ne2 Rh8 28.h3 =.
26...Rc4 27.Qxh4 Rxh4 28.Rf3 f6
29.Rg3+ Kh8 30.Rf1



30...Nc4 31. Be6 Rh5

Better is 31... Rh6 +=.

32.Rg6 Ne3

32...f5 33.g4 Rh3 34.Rxf5 Rxf5
35.gxf5 Rxc3 36.f6 Kh7 37.f7 Rf3
38.Rg8 Ne3 39.f8(Q) Rxf8 40.Rxf8
Bxd5 41.Bxd5 Nxd5 42.Rd8 +-.
33.Rxf6 Rxf6 34.Rxf6 Rg5 35.g3
Rg7 36.Rf8+ Kh7 37.Kf2 Ng4+ 38.
Kg2 Nh6 39.Ne4 Rc7 40.Nxd6
Rxc2+ 41.Kh3 Kg7 42.Rb8 Bxd5
43.Bxd5 Rd2 44.Ne8+ Kg6 45.
Rb6+ Kg5 46.Be4 Nf5 47.Nf6

47. Rf6 Rf2 48. Rxa6.
47...Rd6 48.Nh7+ Kh6 49.Rb7
Ne3 50.Nf8 Kg5 51.Nh7+ Kh5 52.
Re7 Nc4

After the better 52...Rd4 White
has 53.Re6! when the threat of Bf3+
forces 53... Rxe4 54.Nf6+ +-.
53.g4+ Kh6 54.Kh4 Rg6 55.g5+
Rxc5 56.Nxc5 Nxa3 57. Rh7 mate
1-0

Ruy Lopez C99

Mark Dejmek 2160

Magesh Panchnathan 2479

Texas State Ch. 2005 (4)

1.e4 e5 2.Nf3 Nc6 3.Bb5 a6 4.Ba4

Nf6 5.0-0 Be7 6.Re1 b5 7.Bb3 d6
8.c3 0-0 9.h3 Na5 10.Bc2 c5 11.d4
Qc7 12.Nbd2 cxd4 13.cxd4 Bb7
14.d5 Rac8

14...Bc8 15.b4 Nc4 16.Nxc4
Qxc4 17.Rb1 Bd7 18.Bd3 Qc7 19.
Be3 ± (ECO).
15.Bb1

15.Bd3 Nd7 16.Nf1 f5 17.exf5
Bxd5 18.Ng5 Bxg5 19.Bxg5 Nf6
20.Bxf6 Rxf6 21.Bxb5 Ba8 22.Bd3
Qb7 23.Be4 d5 24.Bxd5+ Qxd5 25.
Qxd5+ Bxd5 26. Rxe5 ± Liberzon-
Suetin, USSR 1960.

15...Nh5 (15...Nd7!?) 16.Nf1

16.a4 b4 17.Nb3 Nxb3 18.Qxb3
Qc4 19.Qd1 ±.

16...Nf4 17.Ng3 g6 18.Bd2 Nc4
19.Bc1 Qc5 20.a4 Bd8 21.b3 Bb6
22.Ra2 Na5 23.b4!?

23.Be3 Qc7 24.axb5 axb5 25.
Bxf4 exf4 26.Ne2 ±.
23...Qxb4 24.Ba3 Qc3 25.Bxd6
Nc4 26.Bxf8 Kxf8 27.axb5 axb5



28.Rc2

28.Ne2! Nxb3+!? (28...Nxe2+
29.Qxe2 +-) 29.Kh2 Qb4 30.gxh3
Bxf2 31.Rh1+-.
28...Qa3 29.Ra2

29.Ba2 Nd3 30.Ree2 Nb4 31.
Bxc4 Nxc2 32.Qxc2 Rxc4 33.Qb2
Qxb2 34.Rxb2 Bc8 =.

29...Qb4 30.Rf1 f6

30...f5! 31.Ne2 Nb2 32.Qe1 Qxe1
33.Rxe1 Nbd3 34.Rf1 fxe4 35.
Nxf4 exf4 36.Bxd3 exd3 =.

31.Nd2?

31.Ne2 Nb2 32.Qe1 Nxe2+ 33. Qxe2 Na4 34.Rc2 +.
31...Nb2 32.Qb3 Qxb3 33.Nxb3 Rc3 34.Nc5??

This pitches a piece for nothing. Better is 34.Rxb2 Rxb3 35.Kh1 Rxb2 36.Nc1 Bc8 37.Nd3 Bxb3 38. Rg1 Rxb3+ 39.Kxb1 Bd4 40.Nxf4 Bxb2 41.Nxb3 ±.

34...Bxc5 35.Rxb2 Rxb3 36.Rxb5 Rxb2+ 37.Kh1 Ba6 38.Rb8+ Kg7 39.Rg1 Rxf2 40.Rc1 Be2 41.Rxc5

41.Rb3 Bb6! 42.d6 Bf3+ 43.Rxf3 Rxf3 -+.
41...Bf3+ 42.Kg1 Nxb3 mate 0-1

QGD Slav D17

Peter Vavrak 2463
Rudy Tia 2120

Texas State Ch. 2005 (4)

1.d4 d5 2.c4 c6 3.Nc3 Nf6 4.Nf3 dxc4 5.a4 Bf5 6.Ne5 e6 7.f3 Bb4 8.e4 Bxe4 9.fxg4 Nxe4 10.Bd2 Qxd4 11.Nxe4 Qxe4+ 12.Qe2 Bxd2+ 13. Kxd2



13...Qd4+!?

13...Qd5+ is almost always played here: 14.Kc2 Na6 15.Nxc4 0-0 16.Qe5 and now 16...Rab8 has been played by Anand, Beliavsky Gelfand, and Bareev. Also good is 16...Nb4+!? 17.Kb3 b5 18.axb5 cxb5 19.Kxb4 bxc4 20.Qxd5 exd5 21.Kc5 Rab8 22.Kxd5 Rxb2 and Black had equal play in Ftacnic-Conquest, Ptrague 1989.

14.Kc2 Na6 15. Nxc4 0-0 16. Qe5 Qf2+ 17.Be2 Nb4+ 18.Kb3 b5?!

Tia overestimates his attacking chances. Better is 18...Nd5 19.Rhc1 Qc5 20.Qd6 Qd4 21.Qe5 Qc5 22.Qd6 and a draw was agreed in Orr-McDonnell, Belfast 2001.

19.Kxb4 bxc4 20.Bxc4 Rfd8 21. Ka3 Qh4 22.Rac1 Qe7+ 23.Ka2 Rab8 24.Rhd1 Rb4 25.Rxd8+ Qxd8 26.b3 Rb7 27.Rc2 h6 28.Qc5 Qd1 29.Be2 Qd5 30.Qxd5 exd5 31. a5 e5 32.a6!

White sees that he can force Rb7 and a queen. More long-winded is 32.Rc5 Rd7 33.Bb5 Re7 34.Rxd5 e4 35.b4 g6 36.Kf3 f5 37.Rd6 Kg7 38. Be2 f4 39.b5 f3 40.gxf3 exf3 41.Bd3 g5 42.Rg6+ +-.

32...Re7 33.Rc8+ Kh7 34. Rb8 Kg6 35.Rb7 Kf6 36.b4 e4 37. Rxe7 Kxe7 38. b5 d4 39.b6 d3 40.Bxd3 1-0

London System D02

Alex Chua 2187
Jimi Rohrbaugh 2220

Texas State Ch. 2005 (4)

1.d4 d5 2.Nf3 c5 3.c3 e6 4.Bf4 Nc6 5.e3 Nf6 6.a3 c4 7.Nbd2 Be7 8.Qc2 Nh5 9.Bg3 Bd7 10.Be2 g6 11.e4 Nxb3 12.f3 0-0 13.0-0 Bf6 14.e5 Bg7 15.Rf2 Qb6 16.Raf1 f6 17.exf6 Rxf6 18.b3 cxb3 19.Nxb3 Raf8 20.Nc5 Be8 21.Nd3 R6f7 22. Bd1 Bh6 23.Re1 Rc7 24.Qa2 Bg7 25.Bb3 Na5



26.Bxd5 exd5 27.Qxd5+ Kh8 28. Nfe5 Be6

28...Rxf2 29.Nxf2 ... (a) 29...Bf8 30.Ne4 Be6 31.Qd8 Rc8 32.Nxg6+! hxg6 33.Qh4+ Kg8 34.Ng5 Rc7 35. Nxe6 Rf7 =; (b) 29...Be6 30.Qd8+ Bg8 31.Nxg6+! hxg6 32.Qh4+ Bh7 33.Re8+ (33.Qd8=) Bf8 34.Rxf8+ Kg7 35.Rf3 Qb1+ 36.Nd1 Qxd1+ 37.Rf1 Qd2 38.Qf6+ =.

29.Rxf8+ Bxf8 30.Nxg6+ hxg6 31. Rxe6 Qb1+ 32.Ne1 Nc6

32...Nc4 33. a4 (33.h4 Qf5 =+) 33...Kg7 34.h3 =.

33.h4 Re7 34.Kh2 Qf5 35.Qxf5 gxf5 36.Rxe7 Bxe7 37.a4 Kg7 38. Kh3 Ba3 39.Nd3 Na5 40.g4 fxg4+ 41.Kxg4 Nc4 42.Kf5 Ne3+ 43.Ke6 Nxg2 44.Kd7 Ne3 45.Kc8 Nd5 46. Kxb7 Nxc3 47.a5 Nb5 48.d5 Be7 49.Nf4 Bxb4 50.Ka6 Nd6 51.Kxa7 Bf2+ 52.Kb8 Nc4 53.a6 Kf6 54. Kc7 Ke7 55.Nd3 Bg1 56.Nb4 Bh2+ 57.Kc6 Ne5+ 58.Kb7 Bg1 59.Kc7 Nc4 60.Nc6+ Ke8 61.d6 Bb6+ 62.Kb7 Be5

62...Be3 63.Na5 (63.Kc7 Bb6+ =) 63...Nxd6+ (63...Nxa5+ 64.Kc7 Nc6 65.d7+ Ke7 66.Kxc6 Kd8 =) 64.Kc7 Nb5+ =.



63.Na5! Nxd6+!

63...Nxa5+? 64.Kc7 Bxd6+ (64... Nc4 65.d7+ Kf7 66.Kc6! +-) (64... Nc6 65.d7+ Ke7 66.Kxc6 +-) 65. Kxd6 Nc4+ 66.Kc7 Na3 67.Kc6 +-.
64. Kc6 Ne4 65.Kd5

Black forfeits on time. (65... Kd7
66. Kxe4 Kc7 =). 1-0

Queen's Indian E17

Thomas Crispin 2202
Kallin Nonchiev 2213

Texas State Ch. 2005 (4)

1.d4 Nf6 2.Nf3 e6 3.g3 b6 4.Bg2
Bb7 5.0-0 Be7 6.c4 d6!? 7.Nc3
Ne4 8.Nxe4 Bxe4 9.Nd2 Bxg2 10.
Kxg2 d5 11.Nf3 0-0 12.Bf4 Bd6
13.Bxd6 Qxd6 14.Qb3 c6 15.Rac1
Nd7 16.Qc2!

White's domination of the c-
file promises an edge.

16...dxc4

16...Rac8 17.Rfd1 Nf6 18.c5 (18.
cxd5 exd5 19.Ne5 Rc7 20. e3 Re8
=) 18...bxc5 19.Qxc5 Qxc5 20.
Rxc5 ±.

17.Qxc4 Rfc8 18.Rfd1 a5 19.h4 b5

19...Qd5 20.Rd3 Ra7 21.Rdc3
Rac7 22.Qxd5 exd5 23.Nd2 Kf8
24.e4 Nf6 25.e5 ±.

20.Qc2 f6 21.e4 a4 22.Qe2 a3 23.b3
Qb4 24.h5 c5 25.dxc5 Rxc5



26.Rd4!?

26.Rxc5! Nxc5 27.Rd4 Qc3 28.
Qxb5 and Black's loose pieces are
easy prey: 28...Nxb3 29.Rd3 +- or
28...Na6 29.Qc6 +.

26...Qxd4 27.Nxd4 Rxc1 28.h6
Nf8 29.Qg4 Rc7 30.Nxb5 Rd7 31.
hgx7 Rgx7 32.Qf3 Ra5 33.Nd6 Ra6
33...Nd7 34.Ne8 Rf7 35.b4 Ra8
36.Qg4+ Kf8 37.Nc7 Ne5 38.Nxe6+
Ke7 39.Qd1 +.

34.Ne8 Nd7 35.Nxg7 Kxg7 36.
Qd3 Ra7 37.f4 Kf7 38.e5 f5 39.g4
fxg4 40.Qxh7+ Ke8 41.f5 exf5 42.
e6 f4 43.Qf7+ Kd8 44.e7+ 1-0

Sicilian B42

Magesh Panchanathan 2479
Amon Simutowe 2454

Texas State Ch. 2005 (5)

1.e4 c5 2.Nf3 e6 3.d4 cxd4 4.Nxd4
a6 5.Bd3 Qc7 6.0-0 Nf6 7.c4 d6
8.Nc3 Nbd7 9.Nf3!? b6 10.Qe2
Bb7 11.Rd1 Be7 12.Bf4 0-0 13.a2
Ng4 14.Rac1 Nge5 15.b4 Rfc8 16.
Nxe5 Nxe5 17.Bxe5 dxe5 18.c5



18...bxc5

18...a5 19.Na4 bxc5 (19...axb4
20.Nxb6 bxa3 21.Nxa8 Rxa8 22.c6
Bc8 23.Rc2 ±) 20.Nxc5 axb4
21.axb4 Qb6 =.

19.Na4 a5 20.bxc5

20. Nxc5 axb4 21.axb4 Qb6 =.

20...Rd8 21.c6?

21.Bb5 Rxd1+ 22.Rxd1 Rd8 23.
Rxd8+ Qxd8 24.c6 Ba8 25.Qc2 Bd6
26.Nb2 Bc7 =.

21...Bxc6 22.Rc3 Rab8 23.Rdc1
Qd7 -/+ 24.Nb2 Bg5 25.Rd1 Qd4
26.Qc2 Ba8 27.h3 g6 28.Kh2 h5 29.
Re1 h4 30.Na4 Be7 31.Kg1 Kg7
32.Bf1

32.Kh1 Bc6 33.Nb2 Bxa3 (33...
Rb7 34.Ra1 Rdb8 35.Ra2 Be8 36.
Ba6 Rb6 37.Bf1 Bxa3 +) 34.Rxa3
Qxb2 35.Rxa5 Qxc2 36.Bxc2 Rd2
-/+.

32...Qd2 33.Qxd2 Rxd2 34.Nc5
Ra2 35.Nd3 Bd6 (35.....Bxa3 +)
36.Re3 Rb1 37.Rc1 Rxc1 38.Nxc1
Rxa3 -+ 39.Re2 Bc5 40.Kh2 Bd4
41.f3 Ra1 42.Re1 Bc3 43.Kg1 0-1

French Defense C03

David Phillips 2023
Peer Vavrak 2463

Texas State Ch. 2005 (5)

1.e4 e6 2.d4 d5 3.Nd2 Be7!?

Strikingly similar play evolved
in Lein-Bradford, Dallas Pinfirk III
1996: 3...a6 4.Ngf3 Nf6 5.e5 Nfd7 6.
Bd3 c5 7.c3 Nc6 8.0-0 Be7 9.Re1 g5
10.h3 h5 11.g4 hxg4 12.hxg4 b5 13.
Nf1 Nb6 14.Kg2 Bb7 15. Ng3 Qc7
16.Be3 Nc4 17.Qe2 0-0-0 18.Rh1
N4xe5 19.dxe5 Nxe5 20. Bf4 gxf4
21.Nxe5 Bd6 22.Nxf7 Qxf7 23.
Rxb8 Rxb8 24.Nh5 c4 0-1.

4.Ngf3 Nf6 5.Bd3 c5 6.e5

6.exd5 Qxd5 (6...Nxd5!? 7.Nb3
cxd4 8. Nbx4) 7.dxc5 Qxc5 8.0-0
Qc7 9.b3 Nbd7 10.Bb2 b6 11.Ne4
Bb7 ± Kengis-Hausner, Germany
1992.

6...Nfd7 7.c3 Nc6 8.0-0 g5!? 9.h3
9.dxc5 Nxc5 10.Bb5 Qb6 11.Qe2
a6 12.Bxc6+ bxc6 ∞ Kunze-Schafer.
German Ch. 1991.

9...h5 10.g4 hxg4 11.hxg4



Now 11...a6 12.Re1 would trans-
pose to Lein-Bradford (cited above),
but Vavrak has an even better con-
tinuation available.
11...Qb6 12.dxc5

12.Qa4 f6 13.Bg6+ Kf8 14.exf6
Nxf6 15.dxc5 Qc7 16.Re1 Bxc5 17.
Nf1 e5 18.Qb5 Bb6 19.Nxg5 Qg7 +
(Fritz).

12...Qc7 13.Bb5 Ndx5 14.Qa4
Nxf3+ 15.Nxf3 e5 16.Re1 e4 17.
Qd4 f6 18.Qxd5

Likewise hopeless is 18.Nxg5
Qh2+ 19.Kf1 Bxg4 +.
18...exf3 19.Rxe7+ Kxe7 0-1

Sicilian Closed B25

Larry Moss 2200

Mark Dejmek 2160

Texas State Ch. 2005 (5)

1.e4 c5 2.Nc3 Nc6 3.g3 g6 4.d3
Bg7 5.Be3 d6 6.Qd2 Nd4 7.Nd1
e5 8.c3 Ne6 9.Bg2 Ne7 10.Bh6

White goes astray, ignoring the
danger from ...f5-f4.. Better is 10.
Ne2 or 10.f4 Δ Nf2.

10...Bxh6!?

10...0-0 11.h4 f6 12.Bxg7 Nxg7
13.h5 gxh5 14.Ne3 Be6 15.Ne2 d5
16.d4 dxe4 17.Bxe4 f5 18.Bxb7 Rb8
19.Bf3 cxd4 20.cxd4 f4 -/+ Polster-
Pinter St. Petersburg 2003.

11.Qxh6 f5! 12.Qd2

Not 12.f4? because of 12...Ng8!
13.Qh3 fxe4 14.Bxe4 Nxf4 -/+.
However, 12.exf5 Nxf5 13.Qd2 0-0
14.Ne2 is about equal.

Now Black establishes a wedge
at f4, a psychological turning point.
12...f4 13.Nf3 g5 14.h3?!

It is high time to dispose of the
bishop with 14.Bh3.

14...Nc6 15.c4

Giving away the d4 square is not
desirable, but the knight at d1 needs
an outlet.

15...Ned4 16.Nc3 Be6 17.gxf4
gxf4 18.Ne2 Nxf3+ 19.Bxf3 Qh4
20.Rh2 Rg8 21.0-0-0 0-0-0 22.a3
Rg6 23.b4 Qe7 24.b5 Nd4 25.Nxd4
cxd4 26.Kb2 Rdg8 27.h4 Bg4 28.
Qe2 Qd8 29. h5 Rg5 30.h6 Bxf3
31.Qxf3 Qa5 32.Rc1

Likewise insufficient is 32.Qe2
Qc3+ 33.Ka2 Rg1 34.Qd2 Qxd2+
35.Rxd2 R8g2 36.Rxg2 Rxg2 and

Black will win with his h-pawn.

32...Rg1 33.Rc2

33.Rh1 Rxh1 34.Rxh1 Qc3+ 35.
Ka2 Qc2+ 36.Kal Kc7 +.

As a self-test, hide the text be-
low the diagram and see if you can
find a forced win for Black.



33...Qe1?

A winning deflection is 33...
Ra1! 34.Kxa1 Qxa3+ 35.Kb1 Rg1+,
quickly forcing mate.

34.Kb3 Qd1 35.Qxd1 Rxd1 36.Rh3
Rgg1?

With the restraining move 36...
b6 Black is still winning!

37.c5 Kd7 38.cxd6 Kxd6 39.Rc8
Rb1+ 40.Ka4 Rh1 41.Rd8+ Kc7
42.Rxh1 Rxh1 43.Re8 Kd6 44.
Rd8+ Kc7 45.Re8 Kd6 Draw

Gruenfeld Exchange D87

Andres Suarez 2092

Michal Kujobic 2315

Texas State Ch. 2005 (5)

1.d4 Nf6 2.c4 g6 3.Nc3 d5 4.cxd5
Nxd5 5.e4 Nxc3 6.bxc3 Bg7 7.Bc4
0-0 8.Ne2 c5 9.Be3 Nc6 10.0-0
Qc7 11.Rb1 e6

Better is 11...a6 12.Qc1 b5 13.
Bd3 Rd8 14.Rd1 Bd7 15.Bf4 Qa5 ∞.
12.Qc1 Bd7 13.Rd1 cxd4 14.cxd4
Rfc8 15.Bd3 Qd6 16.Qb2 b6

16...Rc7!? 17.Bf4 e5 18.Bg3 Rac8
19.d5 Nd8 20.Qb4 ±.
17.Ba6 Rf8 18.Rbc1 Rad8 19.Bg5
Rde8 20.Bf4 Qe7 21.Bc7 Bc8?

21...Nb4 22.Qa3 Bc6 23.Qg3 e5
24.Bxe5 ±.
22.Rxc6 Bxa6 23.Bd6 Qd7 24.
Bxf8 Qxc6 25.Bxg7 Bxe2



26.Bh6?

26.d5! Qa4 27.Re1 Bc4 28.Qf6
Qb4 29.Rd1 Qe7 30.d6 +.

26...Qxe4 27.d5 e5 28.Re1 Qh4 29.
Qd2?! =+

29.Bc1 Bc4 30.Rxe5 ±.

29...Bb5 30.d6 Qd4 31.Qxd4 exd4
32.Rxe8+ Bxe8 33.Kf1 f6 34.h4
Kf7 35.Ke2 Ke6 36.Kd3 Kd5 37.
Bg7 Bb5+ 38.Kd2 f5 39.Bf8 Kc4
40.Bg7 Bc6 41.g3 b5 42.a3 a5 43.
Kc2 Bd7 44.Bh6 b4 45.axb4 axb4
46.Bg7 Ba4+ 47.Kb2 d3 48.Bh6
Kd4 49.Bd2 Ke4 50.Bxb4 Kf3 51.
Kc1 Kxf2 52.d7 Bxd7 53.Bd6 h6
54.Bf4 g5 55.hxg5 hxg5 56.Bxg5
Kxg3 57.Kd2 Bb5 58.Ke3 Kg4 59.
Bh6 Ba6 60.Kd2 Kf3 61.Be3 f4 62.
Bc5 Kg2 63.Ke1 Draw

Sicilian B41

Amon Simutowe 2454

Peter Vavtrak 2463

Texas State Ch. 2005 (6)

1.c4 Nf6 2.Nc3 e6 3.Nf3 c5 4.d4
cxd4 5.Nxd4 a6 6.e4 Qc7 7.Be3 d6
8.Be2 Be7 9.0-0 b6 10.f3 Bb7 11.a4
0-0 12.Qd2 Nc6 13.Rfc1 Nxd4 14.
Bxd4 Nd7 15.Rab1 f5 16.exf5 Rxf5
17.Be3 Ne5 18.Qd4 Bg5 19.Bxg5
Rxg5 20.Ne4 Bxe4 21.Qxe4 Qc5+
22.Kh1 Qc6 23.Bd3 Qxe4 24.Bxe4
Rf8 25.b3 Nf7 26.f4 Rc5 27.Re1 a5

28.Rbd1 g6 29.Bf3 Re8 30.Bg4 e5
31.Bf3 Kg7 32.Bd5 Rc7 33.g3
Ree7 34.Bxf7 Kxf7 35.Rxd6 exf4
36.Rf1 Re6 37.Rxf4+ Ke7 38.Rd5
Re3 39.Rb5 Rd7 40. Kg2 Rd2+
41.Rf2 Rdd3 42.Rb2 Re6 43.c5
bxc5 44.Rxc5 Rb6 45.Rxa5 Rxb3
46.Ra7+ Ke6 47.Re2+ Re3 48.
Rxe3+ Rxe3 49.Rxh7 Ra3 50.Ra7
Ra2+ 51.Kh3 Kf6 52.Ra5 Rc2 53.
Ra7 Kg5 54. Ra8 Ra2 55.Ra6 Rc2
56.a5 Ra2 57.Ra8 Kf5 58.a6 g5 59.
Rf8+ Kg6 60.Rg8+ Kf5 61.g4+ Kf4
62.Rf8+ Ke4 63.Rf6 Ra3+ 64.Kg2
Ra2+ 65.Kg3 Ra3+ 66.Kg2 Ra2+



67.Rf2 Rxa6 68.h4 gxh4 69.Kh3
Ra8 70.Kxh4 Rh8+ 71.Kg3 Ke5
72.g5 Ke6 73.Kg4 Ke7 74.g6 Rf8
75.Rf5 Rf6 76.Kg5 Rxf5+ 77.Kxf5
Ke8 78.Ke6 1-0

Philidor's Defense C41

Lee Gardner 2068

Magesh Panchanathan 2479

Texas State Ch. 2005 (6)

1.e4 e5 2.d4 d6 3.Nf3 Nd7 4.Bc4
c6 5.dxe5 dxe5 6.0-0 Be7 7.Ng5
Bxg5 8.Qh5 Qe7 9.Bxg5

9.Qxg5 Qxg5 10.Bxg5 h6 11.Bd2
g5 12.Bc3 f6 13.Nd2 Nb6 14.Bb3
Ne7 15.a4 a5 16.Rfd1 Ng6 17.Nc4 ±
A. Steiner-Brinckmann, Budapest
1929.

9...Nxf6 10.Qe2 h6 11.Bd2 Nc5
12.f3 b5 13.Bd3 0-0 14.Bb4 a5 15.
Bxc5 Qxc5+ 16.Qf2 Qb4 17.c3 Qd6
18.Rd1 Rd8 19.Na3 Be6 20.Be2

Qe7 21.Qb6 Rdc8 22.Nc2 Nd7 23.
Qe3 Nc5 24.b3 Rd8 25.g3 Kh7 26.
f4 f6 27.f5 Bf7 28.g4 Rxd1+ 29.
Rxd1 Rd8 30.Rxd8 Qxd8 31.Qxc5
Qd2 32.Qa7 Bg8 33.Bf3 Qxc2 34.
Qxa5 Qd2 35.h3 Qd3 36.Kf2 c5 37.
Kg2 Qd7 38.Kf2 c4 39.bxc4 Qd2+
40.Kg3 Qe1+ 41.Kh2 Qf2+ 42.Bg2
Bxc4 43.Kh1 h5 44.g5 Bf1 45.Bxf1
Qxf1+ 46.Kh2 Qe2+ 47.Kg1 Qe3+
48.Kh2 Qxg5 49.Qxb5 Qf4+ 50.
Kg1 Qg3+ 51.Kf1 Qxh3+ 52.Kf2
Qh4+ 53.Kg1 Qg4+ 54.Kh2 Qxe4
55.Qf1 Qc2+ 56.Kg3 Qxc3+ 57.Qf3
Qe1+ 58.Kh3 Kh6 59.Qg2 Qe3+
60.Qg3 Qxg3+ 61.Kxg3



61...Kg5 62.a4 h4+ 63.Kf2 e4 64.
a5 h3 65. a6 e3+ 0-1

QGD Tarrasch D33

J.P. Hyltin 2044

James Rohrbaugh 2220

Texas State Ch. 2005 (6)

1.d4 d5 2.c4 e6 3.Nc3 c5 4.cxd5
exd5 5.Nf3 Nc6 6.g3 c4 7.Bg2 Bb4
8.0-0 Nge7 9.Re1

9.a3 Ba5 10.e4 0-0 11.exd5 Nxd5
12.Nxd5 Qxd5 13.Ne5 Qb5 14.a4
Qa6 15.Nxc6 ±

9...0-0 10.Bd2 Bf5 11.Nb5?!

11.Rc1 or 11.a3 is equal.

11...a6 12.Bxb4 Nxb4 13.Na3 Be4
14.Qd2 Nec6 15.Nh4 Bxg2 16.
Nxx2 b5 =+

Black has accomplished his fun-
damental goals in this variation,
getting his 3:2 majority going and

trading bishops to eliminate any
pressure on the long diagonal.

17.Nb1 a5

17...Nxd4 18.Qxd4 Nc2 19.Qd1
Nxa1 20.Nd2 d4 21.Qxa1 =;

17...Qf6 18.Rd1 Nxd4 19.Nc3
Nd3! (19...Ndc2 20. Nxd5 Nxd5 21.
Qxc2 =) 20. Nf4 Nxf4 21.Qxd4 =.

18.Nc3 Rb8 19.Ne3 Ne7 20.a4
bxa4 21.Nxa4 Nec6 22.Nc5 Re8

22...Rb5 23.Nf5 Qf6 24.g4 Rd8
=+.

23.Ra3

23. b3 cxb3 24. Nxb3 Rb5 25.
Ra4 Qg5 =.

23...Qc8 24.b3



24...Nxd4!

24...Rb5 25.bxc4 dxc4 26.Nxc4
Rd8 27.Nb3 Nxd4 28.Nxd4 Qxc4
29.Rc1 Qd5 =.

25.Qxd4 Rxe3! 26.fxe3 Nc2 27.
Qxd5 Nxa3 28.bxc4 Nc2 29.Rf1
Qe8 30.Rf3 Nxe3 31.Qd3 Ng4 32.
Ne4??

32.Qe4 Qxe4 33.Nxe4 Rb1+ 34.
Kg2 Rb2 35.Ra3! f5 36.Nd6 Rxe2+

37.Kg1 g6 38.Rxa5 Rxh2 39.Ra7
Rc2 40.Rc7 Ne3 41.Ne8 Kf8 42.Nf6
h5 43.c5 Rg2+ 44.Kh1 Rxx3 45.c6

Ng4 46.Rc8+ Kg7 (46...Ke7 47.
Nd5+ Kd6 48.c7 Rh3+ =) 47.Ne8+
Kh6 48.c7 Nf2+ 49.Kh2 h4 =.

32...Ne5

0-1

Simutower tries a bold new ap-
proach to fighting the Semi-Slav,
and is rewarded with an over-

whelming advantage inside of 20 moves.

QGD Slav D31

Amon Simutowe 2454

Andres Suarez 2092

Texas State Ch. 2005 (7)

1.d4 d5 2.c4 c6 3.Nc3

When using this move order White should be prepared for the Winawer Gambit, 3...e5.

3...Nf6 4.e3 e6

4...Bf5 5.cxd5 Nxd5 6.Bc4 e6 7.Nge2 Nd7 8.e4 Nxc3 9.Nxc3 Bg6 10.Be3 b5 11.Bd3 ±

5.h3

Simutowe says this is his own invention, which he had earlier prefaced with 5.Qc2 against Dmitry Schneider.

5...Nbd7 (5... a6!?) 6.cxd5 exd5 (6...Nxd5!?) 7.g4! Bb4 8.f3 Qc7 9. Nge2



One cannot help but admire the creativity Simutowe has brought to this opening. Now Suarez goes badly astray and his position gets rolled by the mobile pawn center.

A more worthy test of this line would be 9...0-0 10.Bg2 Re8 11.0-0 Nb6 12.e4 c5! 13.Bg5 cxd4 14.Nb5 Qd7 15.Nbxd4 Be7 =. **9...Bxc3+?! 10. bxc3 h6 11.Bg2 b6 12.0-0 Ba6 13.e4 0-0-0 14.e5 Rde8 15.Rf2 Nh7 16.f4 f6 17.Ng3 g6 18. Ba3 fxe5 19.fxe5 Ng5 20.Rc1 Rh7**

21.Bd6 Qb7 22.Qc2 Rg7 23.Nf1 Nb8

23...h5 24.Ne3 hxg4 25.hxg4 Nf7 (25...Ne6 26.c4! Nxd4 27.Qb2 c5 28.Bxd5 Nc6 29. e6 Rh7 30.Rf7 Rxf7 31. exf7 Rxe3 32.Qh8+ Nd8 33.Qe8) 26.Rxf7 Rxf7 27.c4 dxc4 28.Nxc4 Nb8 29.Bxb8 Bxc4 30. Qxc4 Kxb8 31.Bxc6 Rc7 32.Bxb7 Rxc4 33.Rxc4 Kxb7 34.Kf2 +-.

24.Ne3 Ne6



All that is left is to blast open the c-file and the long diagonal ...

25.c4! Nxd4 26.Qb2 c5 27.cxd5 Kd7, Black resigns 1-0

28.Nc4 Bxc4 29.Rxc4 Kd8 30.e6 Nd7 31.Bxc5 Nxc5 32. Qxd4 Rh7 33.d6 Qg7 34.e7+ Kd7 35.Qd5 Rc8 36.Rxc5 bxc5 37.Qb7+ +-.

Queen's Indian E17

Peter Vavrak 2463

Michal Kujovic 2315

Texas State Ch. 2005 (7)

1.d4 Nf6 2.Nf3 e6 3.c4 b6 4.g3 Bb7 5.Bg2 Be7 6.0-0 0-0 7.d5 exd5 8. Nh4 c6 9.cxd5 Nxd5 (9...cxd5 =) 10. Nf5 Bc5 11.e4 Ne7 12.Nxg7 Kxg7 13.b4 Bxb4 (13...Ba6!) 14. Qd4+ f6 15.Qxb4 d5 16.exd5 Nxd5 16...cxd5 =∞ Dimitrov-Burhanlarski, Bulgaria 1980. 17.Qh4 Kh8 18.Bb2 Nd7 19.Nc3 Ne5 20.Rad1 Qc7 21.Rfe1 Rae8 22.Nxd5 cxd5 23.Bd4 Qd6 24.Qh6 Qb4 25.Qf4 Qe7 26.Re3 Qg7



27.Rde1 Re6 28.Qf5 Rfe8??

28...Re7 29.f4 Nc6 30.Rxe7 Nxe7 31.Qe6 Ng8 32.Qd6! Rc8 33. Bh3 Rf8 (33...Rc4 34.Re8 Rxd4 35.Be6 +-) 34.Rc1 Ba6 35.Qxd5 ±. **29.f4 Nf3+ 30.Bxf3 Qg6 1-0**

King's Indian E65

Magesh Panchanathan 2479

Deeptyman Datta 2135

Texas State Ch. 2005 (7)

1.Nf3 Nf6 2.g3 g6 3.Bg2 Bg7 4.0-0 0-0 5.c4 c5 6.d4 d6 7.Nc3 Nbd7 8.e4 e5 9.dxc5 dxc5 10.Qd6 Qb6 11.Rd1 Qxd6 12.Rxd6 b6 13.Bg5 Ne8 14.Rd3 f6 15.Be3 Nc7 16.Bh3 Rf7 17. Rad1 Nf8 18.Bxc8 Rxc8 19.Rd8 Rxd8 20.Rxd8 Rd7 21.Rc8 Kf7 22.Nd5 Nfe6 23.Kf1 Bf8 24. Ke2 Bd6



25.Rh8 Kg7?? (25...h5 =) 26. Rxh7+ 1-0

2005 Texas Amateur

Austen Green of Grand Prairie won the 2005 Texas Amateur Championship last Memorial Day weekend with a 7-0 score.

Sicilian B40

John Dunlap 1985

Austen Green 1824

Texas Amateur 2005 (5)

1.e4 c5 2.Nf3 e6 3.d4 cxd4 4.Nxd4 Nf6 5.Nc3 a6 6.Bd3 Nd6 7.Nxc6 bxc6 8.0-0 d5 9.exd5 cxd5 10.Qe2 Be7 11.Rd1 Qc7 12.f4 0-0 13.h3 Bd6 14.Qf3 Bb7 15.Ne2 Qb6+ 16.Be3 Qc7 17.Bd4 Ne4 18.Rac1 Nc5 19.Qg3 g6 20.Qh4 e5 21.fxe5 Bxe5 22.c3 Nxd3 23.Rxd3 Bxd4+ 24.Nxd4 Qc4 25.Rg3 Qxa2 26.Qf6 Qxb2?

26...Bc8 27.Nc6[?] Re8 28.Ne7+ Rxe7 29.Qxe7 Qxb2 30.Qd8+ Kg7.

White fares better with 27.Rf1 Bd7 28.h4!? Qa5! (Δ 29.h5 Qd8) 29.Nf5 Bfx5 30.Rxf5 Qd8 31.Qd4 =.



27.Rf1?! (27.Nf5! +-) 27...Bc8 28.Rf4??

Black is absolute toast after 28.Nc6!, e.g. ...h5 29.Rxg6+! fxxg6 30.Ne7+ Kh7 31.Qxg6+ Kh8 32.Qh6#. 28...Bd7 29.Rh4 Qc1+ 30.Kh2 Rae8 31.Qf3 Re1 32.Rxg6+

32.Rgg4 Rh1+ 33.Kg3 Qe1+ +- 32...fxg6 33.Qxd5+ Rf7 34.Nf3 Qxc3 35.Rc4 Qb2 36.Nxe1 Qb8+ 37.Kh1 Qe8 38.Re4 Qc8 39.Re7

Be8 40.Nf3 Kf8 41.Qe5 Qc1+ 42.Kh2 Rxe7 43.Qh8+ Kf7 44.Qxh7+ Ke6 45.Nd4+ Kd7 0-1

Pirc Defense B08

Austen Green 1824

Kevin Wang 1809

Texas Amateur 2005 (6)

1.e4 d6 2.d4 Nf6 3.Nc3 g6 4.Nf3 Bg7 5.Bc4 0-0 6.h3 Nxe4 7.Nxe4 d5 8.Bd3 dxe4 9.Bxe4 c6 10.c3 h6 11.0-0 Qc7 12.Re1 e6 13.Ne5 Nd7 14.f4 Nf6 15.Bc2 b6 16.Be3 Bb7 17.Rc1 Rfd8 18.Qe2 Rac8 19.Bb3 Qe7 20.Bf2 Nd5 21.Qg4 h5 22.Qg3 Qf6 23.Nd3 Ba6 24.c4 Ne7 25.Nb4 25.Ne5 Nf5 26.Qc3

25...Bb7 26.Nc2 Bh6 27.Qh4 Bg7 28.Qxf6 Bxf6 29.Rcd1 Nf5 30.g4 hxg4 31.hxg4 Ne7 32.Re3 c5 33.Red3 Be4 34.Rh3 Bxc2 35.Bxc2 cxd4 36.b3 Nc6 37.Kg2 a5 38.a3 Rc7 39.Be4 Ne7 40.Rhd3 Rcd7 41.Kh3 e5 42.fxe5

42.g5 Bg7 43.Kg4 f5+ 44.gxf6 Bxf6 45.fxe5 Bxe5 46.Bg3 Bxg3 47.Kxg3 Kg7 -/+.

42...Bxe5 43.Bh4 f6 44.Rf1 Kg7 45.Bg3 Nc8 46.Bc6 Rc7 47.Be4 a4 48.Rc1 Nd6 49.Bd5 b5

49...Nxc4? 50.Rxc4! 50.c5 Bxg3 51.Kxg3 Nf5+ 52.gxf5 Rxd5 53.b4 gxf5 54.Kf4 Kf7 55.Rh1 Ke6 56.Rg3 Re5 57.Rh8 Re4+ 58.Kf3 Re3+ 59.Kf2 Rxxg3 60.Kxxg3 Kd5 61.Rd8+ Kc4 62.Kf4



62...d3?

This pawn is easy to blockade, unlike the a-pawn: 62...Kb3! 63.Rxd4 Kxa3 64.Kxf5 Kb3 65.Ke6 a3 66.Kd6 Ra7 67.Rd1 a2 -+. 63.Ke3 Re7+ 64.Kd2 Re2+ 65.Kd1 Kc3 66.c6 Rh2 67.Ke1 Rh1+ 68.Kf2 Rh7 69.Rd7 Rh8 70.Rd5 Rc8 71.Rc5+ Kd2?

Again, 71...Kb3! (or Kb2) -+. 72.c7 Kd1 73.Kf1 d2 74.Kf2 f4 75.Kf1 Rh8??

75...f3 76.Kf2 f5 77.Kf1 f4 78.Kf2 Rxc7 79.Rxc7, stalemate! 76.c8Q Rh1+ 77.Kg2 Ke2 78.Qe6+ Kd3 79.Qd5+ Ke2 80.Qf3+ 1-0

QGD Semi-Slav D45

Marc Fuhrmann 1987

Austen Green 1824

Texas Amateur 2005 (7)

1.d4 d5 2.Nf3 Nf6 3.c4 c6 4.Nc3 e6 5.e3 Be7 6.b3 a6 7.Be2 0-0 8.0-0 Qc7(?)

More consequent is 8...b5!, for which the queen has no business being on the c-file.

9.Bb2 Nbd7 10.Rc1 h6 11.Qc2 dxc4

11...b5 12.cxd5 cxd5 13.Nxd5! 12.bxc4 Nh7!?

On the more typical 12...e5, Black needn't fear 13.Nxe5 Nxe5 14.dxe5 Qxe5 15.Nd5 Qd6. Better is 13.d5 with a space advantage. 13.e4 f5 14.exf5 exf5 15.Bd3 Ng5 16.Ne5?

16.Nxxg5 Bxxg5 17.Rce1 +=.

16...Nxe5 17.dxe5 f4 18.Ne4

18.f3 Qe5 19.Nd5 Bc5+ 20.Kh1 Qd6 21.Nc3 Be6 -/+.

18...f3 19.g3

19.Nxxg5 Bxxg5 20.Rce1 fxxg2 21.Kxxg2 Be6 and Black is better.

19...Qd7 20.Rfe1 Qh3 21.Bf1 Qh5 22.c5 Nxe4 23.Qxe4 Be6 24.Bc4 Bxc4 25.Qxc4+ Kh8 26.Qf1 Rad8 27.e6?

In an ugly position White self-destructs. Better is 27.Rc2.

27...Rd2 28.Re5 Rf5 29.Rxf5 Qxf5 30.Ba3 Qxe6 0-1

Events in brief from 2005

San Antonio City Championship

Jose Luis Silva defended his title to gain his third city championship. He was clear first with 4.5 points in the five round event, winning \$250. Tied for second plus U2200 with 4 were Mitch Vergara, Rudy Tia, Gregg Stanley and J.P. Hyltin, each winning \$72.92.

All the other prize winners scored 3.5 points: U2000 Philip Irwin, Randall Schwarz, Tapiwa Gwaze, Mark McCue and Torey Neuzil (\$25 each); U1800 Allen Eckert & Steve Coyle (\$62.50 each), and U1600+U1400 Daniel Schwartz and Gustavo Cruz (\$104.17 each).

Martin Gordon and Greg Wren directed the event, held July 23-24 at the Texas Neurosciences Institute. Thanks to the large turnout (66 players) they raised the prize fund from the \$600 advertised to \$1,000.

Pirc Defense B07

Jose Silva 2196

Doug Huddleston 2077

S.A. City Chp. 2005 (5)

1.d4 g6 2.e4 Bg7 3.Nc3 d6 4.Bc4 Nf6 5.Qe2 Nc6

5...c6 is a quiet alternative.

6.e5 Nxd4!? 7.exf6 Nxe2 8. fxf7 Rg8 9.Ngxe2 Rxf7 10.Bh6 Rg8 11.0-0-0

Nunn's Chess Openings now gives 11...Be6 ∞. Experience seems to favor White (judging from NICBase Online), but not definitively so.

11...e6(!?) 12. f4 Qe7 13.Ne4

The threat is 14.Bg5, but after Black's forced reply a good follow-up is hard to find.

Fritz likes White after 13.Nd4!, answering 13...d5 with 14.Bxd5!, while the alternatives 13...Qh4 14. Bg5 and 13...c6 14.Ne4! are also unpalatable.

13...f6 14.Nd4 d5

This is where a knight on c3 looks so much better. Not one to have his bluff called, Silva redoubles his bet.

15.Bb5+ Kf7 16.Nxf6!? Qxf6 17. Nf3



17...Rf8?

Black is better after 17...c6 18. Bd3 Ke8 19.Rhe1 Bd7 20.Ne5 Qe7 21.Bg5 Qc5. (Note that 18.Ne5+ Ke8 19.Nxc6? fails to 19...a6 20.Ba4 Bd7.)

18.Ne5+ Kg8 19.h4 Qe7 20.h5 Rxf4?

20...g5 21.Bxg5 Qc5 22.Rh4 Rf5 23.Rg4 Qxb5 24.Bh6+ Kh8 25.Bg7+ =.

21.Bxf4 Qb4

Or 21...g5 22. Bd2 Qd6 23.Rde1 Qb6 24. Bd3 +.

22. c4

A witty win is 22.Bh6!! Qxb5 23. Rdf1 Bd7 24.hxg6 hxg6 25.Rf6 forcing mate, e.g. 25...Be8 26.Rf8+ Kh7 27.Bg5+ Kg7 28.Bf6+! Kxf8 29.Rh8#.

22...a6 23.Be8 Qf8 24.Bf7+ 1-0

Texas Team '05

The *Knicks and Nets Revenge Squad* (John Patty, Angela Alston, Brian Richardson and Robert Feldstein) topped the 2005 Texas Team Championship, winning all their matches. The last round match with *Team Discord* was decided by a lone fourth board win by Feldstein over Steve Young.

The *Jesse James Gang* (Gregg Stanley, Martin Gordon, Tapiwa Gwaze and Jesse Lozano) won the U1900 trophy with 2.5 points.

The event, held June 11-12 at the TNI Building, drew just seven teams.

Fall Open

Selby Anderson and Rudy Tia tied with 4-0 to win \$150 each in the Fall Open, held Oct. 1-2 in San Antonio. Don Sutherland was the top U2200 with 3.5 points, winning \$75. Randall Schwarz also scored 3.5 to win the U2000 prize of \$75. Raymond Smith won the U1800 prize of \$75, scoring 3 points. The top U1600 player was Richard Gabriel with 2.5 points, winning \$75. Four players tied for the U1400 prize with 2.5 points: Paul Webb, Derek Chang, Eric Chen and Dylan Smith, each winning \$18.75. Raul Flores and Roger Rodriguez split the unrated prize with 2.5, each winning \$37.50.

Martin Gordon directed the 46-player event for the San Antonio Chess Club.

Nimzo-Indian E42

J.P. Hyltin 2023

Selby Anderson 2261

Fall Open 2005 (3)

1.d4 Nf6 2.c4 e6 3.Nc3 Bb4 4.e3 c5 5. Nge2 cxd4 6.exd4 0-0 7.a3 Be7 8.d5

8.Nf4 d5 =.
8...exd5 9.cxd5 Re8 10.d6 Bf8 11. Qd3?!

Previously Hyltin had played 11. Be3, when best would have been 11...Ng4 12.Bd4 Nh6! Δ Nf5 -/+.

I was expecting the theoretical move 11.g3, when Black can either go after the pawn with 11...Re6!?! ∞/= or equalize with 11...b6 12.Bg2 Nc6.

11...Re6 12.Bf4 Nh5 13.Bg3 Nxb3 14. hxb3 h6 15.Ne4 Qa5+

This came as an unpleasant surprise to my opponent.

16.b4 Qe5 17.Qc3

17.Rc1 Nc6 18.Rh4 Bxd6 -/+.

17...Qxe4 18.Qxc8



My original plan here was to trade queens with 18...Qc6, emerging with the extra pawn plus better development. Then I thought, surely I must have more of an advantage than that . . .

18...Nc6!! 19.Qxa8 Nxb4! 20.Rc1 20.axb4 Qxb4+ 21.Kd1 Rxd6+ -+;

20.Rh4 Nc2+ 21.Kd2 Rxd6+ 22. Kc1 Qd3 23.Ra2 Qd1+ 24.Kb2 Qxf1 +.

20...Nd3+ 21.Kd2 Nxc1 22.Rh4

22.Nxc1 Qe1+ 23.Kc2 Rxd6 -+.

22...Rxd6+ 23.Kxc1 Rc6+?

Imelda Bennett later told me that she had expected 23...Qc6+. I realized to my horror that this quickly forces mate: 24.Kb1 Rd1+

25.Kb2 Rd2+ 26. Ka1 Qc2, etc. Even my seven year old student Seth Harston found 23...Qc6+!

24.Kd2 Rc2+ 25.Ke1

25.Kd1 Qd3+ 26.Ke1 Qd2#.

25...Rc1+ 26.Kd2 Qc2+ 27.Ke3 Qb3+!

To create an obstruction in the midst of White's emerging piece play.

28.Ke4 Rxf1 29.Nd4?

I was expecting 29.Qxa7, when I had planned 29...Qc2+! 30.Kf3 Bc5 31.Qb8+ Kh7, and White cannot stop ...Rxf2+.

29...Re1+ 30.Kf5 Qd5+ 0-1

At last, mate in a few is in sight.

Gallagher Memorial

Visiting masters Mark Dejmek of Sugar Land and Jim Rohrbaugh of Kerrville tied for first at the third annual Jim Gallagher Memorial, held Dec. 3-4 at the Texas Neuroscience Institute. They each scored 3.5 out of 4 and won \$150.

Tied for third place with 3-1 were Selby Anderson and Anthony Guerra. They split third prize and U2100, each winning \$87.50. For the U1900 prize there was a four-way tie between Julian Hernandez, Paul Reid, Greg Wren and Frank Vara with 2 points, each winning \$18.75.

In the Reserve Section (U1700), Rheanna English and Gabriel Guerra shared 1st-2nd with 4.0 points, winning \$100 each. Tied for the U1500 and U1300 prizes were Richard Gabriel and Derrick Scott winning \$62.50 each. Vicente Santos, Richard Weber and Juan Davila tied for the Unrated prize and won \$16.67 each.

The tournament was directed by J.P. Hyltin for the San Antonio Chess Club. The event raised over \$300 for a local chess scholarship he has started with SACC.

The Best Combination Prize of Fritz CDs was awarded to Mark Dejmek for the following game:

Modern Benoni A70

Selby Anderson 2270

Mark Dejmek 2165

Gallagher Memorial 2005 (4)

1.d4 Nf6 2.c4 c5 3.d5 e6 4.Nc3 exd5 5.cxd5 d6 6.e4 g6 7.h3 Bg7 8.Nf3 0-0 9.Bd3 Re8 10.0-0 c4 11.Bc2

11.Bxc4 Nxe4 12.Nxe4 Rxe4 13.Bg5 Bf6 (13...Qf8 14. Qc2 Re8 15. Rac1 Bf5 16.Rxe8 Qxe8 17.Qb3 ± *Nunn's Chess Openings*) 14.Bd3 Re8 15.Qd2 Bxg5 16.Nxg5 h6 17. Nf3 Kg7 18.Rfe1 Rxe1+ 19.Rxe1 Nd7 20. Re4 Nc5 21.Rh4 ± (*Bischoff-C. Hanses, Hamburg 1991*).

11...b5 12.a3

12.Nxb5 Nxe4 13.Re1 Ba6 14.a4 Bxb5 15.axb5 Nc5 16.Nd2 Rxe1+ 17. Qxe1 c3 18.bxc3 Bxc3 19.Ra3 Bb4 ∞ (*Dreev-Wedberg, NY 1991*).

12...a5! 13.Re1 Ba6 14.Nd4 b4 15. Ncb5 Qb6 16.a4 Nbd7 17.Bf4?

17.Be3 Nc5 18.f3 b3 19.Bb1 Nxa4 20.Rxa4 Nxd5 21.exd5 Rxe3 22.Rxe3 Bxb5 23.Nxb5 Qxb5 24. Rxc4 Qxc4 25.Rxb3 Re8 =+.



17...b3 18.Bb1 Nh5?

18...Nxd5 19.exd5 Rxe1+ 20. Qxe1 Bxd4 21.Nxd4 (21.Nxd6 Bxb2 22.Qe7 Rf8 23.Bh6 Qd8 24. Bxf8 Qxe7 -+) 21...Qxd4 22.Qd2

Qxd2 23.Bxd2 Bb7 24.Be4 Nf6 and Black emerges two pawns up.
19.Be3 Nc5 20.Nc3 Qd8 21.Qd2 Qd7 22.f3 Nf6 23.Ncb5

From here on, the game crackles like a string of firecrackers.

23...Nxa4! 24.Rxa4

24.Nxd6 Rf8 25.Bf4 Ne8 26.Nxe8 Rfxe8 =.

24...Bxb5 25.Rxa5



25...c3! 26.Qxc3 Nxd5! 27.exd5 Rxa5 28.Qxa5 Rxe3 29.Qa8+!

29.Nxb5 Rxe1+ 30.Qxe1 Qxb5 31.Qd2 Qc5+ Δ ...Qd4 =+.

29...Re8 30.Rxe8+ **Draw**

Black is marginally better with his bishops, but nothing serious. A nice bit of razzle-dazzle by Dejmek.

Dejmek's theoretical knowledge is also on display in this game:

French MacCutcheon C12

Mark Dejmek 2201

John Patty 2200

Gallagher Memorial 2005 (3)

1.e4 e6 2.d4 d5 3.Nc3 Nf6 4.Bg5 Bb4 5.e5 h6 6.Bc1 Ne4 7.Qg4 g6 8.Nge2 c5 9.a3 Qa5

9...Ba5 10.b4! cxb4 11.Nxe4 dxe4 12.axb4 Bxb4+ 13.c3 Be7 14.Ng3 Bd7 15.Nxe4 Bc6 16.Bd3 ± (ECO).

10.axb4 Qxa1 11.Nxe4 dxe4 12.bxc5 Bd7 13.h4 Nc6 14.Kd1 0-0-0 15.Rh3 Nxe5



16.Qxe4 (16.dxe5?? Bb5+ →) 16... Nc4 17.Rb3 Bc6 18.Qd3 Bd5 19.c6 bxc6 20.Rb4 Nb6 21.c4 c5 22.Rxb6 axb6 23.cxd5 Rxd5 24.Qb3 Kc7 25.Nc3 Rxd4+ 26.Kc2 Rb4 27.Nb5+ Kc8 28.Qf3 Qa4+ 29.b3 Qa2+ 30.Bb2 1-0

King's Indian Defense E99

Jim Rohrbaugh 2200

Rudy Tia 2129

Gallagher Memorial 2005 (4)

1.c4 g6 2.d4 Nf6 3.Nc3 Bg7 4.e4 d6 5.Be2 0-0 6.Nf3 e5 7.0-0 Nc6 8.d5 Ne7 9.Ne1 Nd7 10.Nd3 f5 11.Bd2 Nf6 12.f3 f4 13.c5 g5 14.cxd6 cxd6 15.Nf2a6 16.a4 b6 17.Qc2 Kh8 18.Rfc1 h5 19.h3 Neg8 20.Ra3 Nh6 21.Qd1 Rg8 22.Na2 Bf8 23.Nb4 g4 24.fxg4 hxg4 25.hxg4 Nfxg4 26.Bxg4 Bxg4 27.Nxg4 Rxg4 28.Rh3 Qg5 29.Qf3 Ra7 30.Rc8 Kg8



31.Rxh6 Rg7 32.Rh2 Rg3 33.Qe2 a5 34.Nd3 f3 35.Bxg5 fxe2 36.Bf6 Rxd3 37.Kf2 Re3 38.Ke1 Rxe4 39.Bxg7 Kxg7 40.Rh3 Rxa4 41.Rf3 Rf4 42.Kxe2 Kf7 43.Rb8 Ke7 44.Rb7+ Kf6 45.g3 Rxf3 46.Kxf3 Bh6 47.Rxb6 Ke7 48.Kg4 Bd2 49.Kf5 Bb4 50.g4 Kf7 51.g5 Bc5 52.g6+ 1-0

Polgar Qualifier

Ten girls out of 23 invitees from around the state turned out for the second annual Texas Polgar Qualifier, held June 4-5 in San Antonio.

Two players qualified to advance to the Polgar Girls' Invitational (Aug. 6-11, Phoenix, AZ). Anjali Datta, 13, of Grapevine, was clear first with 4-0, winning a trophy and a \$150 stipend from MHCC. Stephanie Ballom, 16, of Mansfield, came in second with a score of 3.5-5, winning a trophy and a \$50 stipend.

The South Texas Polgar Chess Center awarded the winners each \$50 plus a Polgar chess bag and tee shirt. In addition, South Texas Chess Associates awarded FIDE Game Timer clocks to the winners. Coach Dan DeLeon from Corpus Christi made the presentations. The Texas Chess Association also awarded stipends to the two winners to defray travel expenses.

Selby Anderson directed the event, organized by Kay English and Duane Solley for the Methodist Hospital Chess Club.

English Opening A31

Anjali Datta 1842

Amita Vempati 1696

Polgar Qualifier (4)

1.d4 Nf6 2.c4 c5 3.Nf3 g6 4.Nc3 cxd4 5.Nxd4 Bg7 6.e3

6.e4 is a well-known Sicilian.
6...d6 7.Be2 0-0 8.0-0 Nbd7?! 1-0

Better is 8...Nc6 9.b3 Bd7 10.Bb2
a6 Δ ...Rb8, ...b5.
9.b3 Nc5 10.Bf3 Ne6

This knight's wanderings have not been very helpful to Black.
11.Nxe6 fxe6 12.Bb2 e5 13.Nd5
Rb8 14.Qd2

A rather awkward, planless move. Better is 14.Nxf6+ Bxf6
15.Bd5+ Kg7 (15...e6 16.Be4) 16.f4
exf4 17.Bxf6+ Rxf6 18.exf4 ±.
14...Bf5 15.Rfd1 (15.Rad1) Ne4
16.Nxe7+!??

Imaginative but incorrect. White keeps an edge with 16.Bxe4
Bxe4 17.f3 Bf5 18.e4 Be6 19.Qg5.
16...Qxe7 17.Qd5+



17...Qf7 18.Qxf7+

Datta sees now that 18.Bxe4
Bxe4 19.Qxe4 loses to 19...Qxf2+
and 20...Qxb2.

18...Rxf7 19.g4 Bxg4??

Black returns the favor. Winning is 19...Ng5! 20.Bd5 Be6 +.

20.Bxg4 Nxf2 21.Be6 Nxd1 22.
Rxd1 Bf8??

Better is 22...Kf8 23.Bxf7 Kxf7
24. Rxd6 ±, although White should still win easily.

23.Rf1 Bh6 24.Bxf7+ Kg7 25.e4
Be3+ 26.Kg2 b6 27.Rf3 Bc5 28.
Bd5 Kh6 29.Bc1+ Kg7 30.Rf7+
Kh8 31.Bh6 a5 32. Bg7+ 1-0

Solution (back cover): 1.Rc8! 1-0.
If 1...Nf8 2.Bxf8 Kxf8 (2...Rxf8
3.Qd7#) 3.Rxd8+ and White wins.

Many Springs Quads

by Tom Kusnierz

The Watauga Chess Club hosted the Many Springs Quad #8 on Saturday August 13, 2005 in North Richland Hills. Thirty players participated in seven individual quad sections, with the final "quad" consisting of six players playing a 5 round robin.

An interesting angle that we tried in this quad was to give each quad the flexibility to choose its own time control and schedule. Although there was some debate within the quads before round 1 started, all five of the top quads decided to accept the default game/75 time control. One quad did change to a game/60 time control, and the final quad played at game/30.

Two scholastic level players ended up in a disputed draw by repetition. I was unable to determine if the position had been repeated three times after talking to the two players and trying to move backwards from the disputed position. I then proceeded to play out the game on a open board from the score sheet of the player making the repetition claim. The game was at move 70, but eventually we arrived at the disputed position and I could only find two repeated positions. I explained my finding to the players and they both agreed with the assessment and I restarted the clock on their game, upon which they immediately agreed to a draw!

Moral of the story: ask the players what their intentions are before trying to arbitrate a dispute.

QGD Semi-Slav D45

Alex Chua 2200

Austen Green 1914

Many Springs Quads #8

1.d4 d5 2.c4 e6 3.Nf3 Nf6 4.Nc3
e6 5.e3 Nbd7 6.Qc2 Bd6 7.g4 h6 8.
Bd2 e5 9.cxd5 cxd5 10.dxe5 Nxe5

11.Nxe5 Bxe5 12.h3 Qb6 13.Bb5+
Kf8 14.Bd3 Be6 15.f4 Bd6 16.
O-O-O d4 17.exd4 Qxd4 18.Kb1
Rc8 19. f5 Bxa2+ 20. Kxa2 Nd5



21.Nb5! Rxc2 22.Nxd4 Rc7 23.
Nb5 Rd7 24.Be4 1-0

Chua and Green came in first and second respectively in Quad #1.

In the category of missed opportunities, here is a position I observed from Quad #4:



Black to mate in four

Solution: next page.

TCA Postal Chess

Contact Mario Leal

mleal@spamcop.net

Zivanic, Bradford win Southwest Open

Joe Bradford of Austin, playing in his first Texas tournament in nine years, tied for first with UT-Dallas student IM Marko Zivanic, 22, from Serbia-Montenegro. They each took home \$566.2 for scoring 5.5 out of 7 in one of the strongest fields the Southwest Open has ever seen.

Okay, *the* strongest. Just look at the eight players who tied for third place with 5-2 scores:

3.	GM Alejandro Ramirez	TX	2565
4.	IM Magesh Panchanathan	TX	2532
5.	IM Dmitry Schneider	NY	2525
6.	FM Drasko Boskovic	TX	2483
7.	IM Davorin Kuljasevic	TX	2438
8.	IM Peter Vavrak	TX	2462
9.	FM John Barthomemew	MN	2435
10.	NM Ryan Milsits	PA	2214

Tied with 4.5 were Mark Dejmek, Jason Doss, and top Expert Cesar Augusto Blanco from Michigan.

Notes by NM Selby Anderson

Playing his beloved Winawer French, Joe Bradford utterly "schools" FM Robby Adamson from Tucson, Arizona. Bradford, 55, is still one of the most dangerous French Defense players this side of Korchnoi.

A game search on NICBase Online reveals that the two met earlier last year at the National Open in Las Vegas, with Bradford losing on the White side of an English Opening. Ah, revenge.

Adamson had a banner year as a chess coach, leading his Catalina Foothills High School team to a national title at the Super Nationals in Nashville.

French Defense C18

Robby Adamson 2393

Joe Bradford 2504

Southwest Open 2005 (6)

1.e4 e6 2.d4 d5 3.Nc3 Bb4 4.e5 Ne7 5. a3 Bxc3+ 6.bxc3 c5 7.Qg4 Qc7 8.Bd3

The modern treatment – call it the Poison Pawn Deferred.

8...cxd4 9.Ne2 dxc3 10.Qxg7 Rg8 11.Qxh7 Qxe5

11...Nbc6 12.Bf4 Bd7 13.0-0 0-0 14. Bg5 Rdf8 15.Rfe1 ∞ NCO.

12.Bf4 Qf6 13.h4 Nd7

Also played are 13...Rg2 and 13...Nbc6. The point of the text is that Black wrests control of f6 to get his center moving.

14.Bg5 Qh8 15.Qxh8 Rxh8 16. Nxc3

Nunn's Chess Openings gives White an edge here. I'm skeptical because White has three pawn islands to Black's two, while Black has a mobile pawn center and promising play on the c-file.

I've been on the right side of a book edge when I played against Bradford's French, and I got rolled just the same.

16...a6 17.0-0-0 f6 18.Bd2?

More active is 18.Be3, answering 18. ...e5? with 19.Nxd5! Nxd5 20. Bg6+ and 21. Rxd5, netting a pawn. Now White goes into full retreat.

18...Nc5 19.Be2 d4 20.Nb1 e5 21. Bb4 Ne4 22.Be1 Bf5 23.g4 Bh7 24. Bd3 Nd5 25.f3 Nc5 26.Bxh7 Rxh7 27.Bf2 Rc8 28.Rhe1 Rhc7

This was the eleventh time Bradford has won or tied for first in a Southwest Open, bringing that record into line with his eleven Texas state championships.

The Reserve was won by John Crawford, Frank Brack and Kevin Wang with 6-1 each.

In addition, there were two scholastic sections. The K-12 Open was won by Jimmy Wu, 5-0. Tied for second were Sean Li and Eric Lu with 4.5 each. Eric Yang won the K-12 Under 750 event with 4.5-1.5.

There were 55 players in the Open and 101 in the Reserve, with 75.5% of the advertised \$6,200 prize fund paid out. The scholastic side event (which did not count toward the base of entries for the prize fund) drew 91 players, for a grand total of 250 players.

George John was chief TD, assisted by Francisco Guadalupe (senior. See the 2006 Texas Team report for examples of his son's play.) Luis Salinas of the Dallas Chess Club was the chief organizer.

– SKA



29.c3

Also bad is 29.Kd2 Kf7 30.Rc1 b5 31.Rg1 Ne6 32.Bg3 Nc3 33.Nxc3 Rxc3 +.

29...Kf7 30.g5 Nf4! 31.Kd2 dxc3+ 32.Kc2 Ncd3! 33.Be3

Black's passed c-pawn triumphs after 33.Rxd3 Nxd3 34.Kxd3 c2, or 33.Rf1 Nxf2 34.Rxf2 Ne6 followed by ...Nd4+.

33...Nxe1+ 34.Rxe1 Ng2 35.Re2 Nxb4 36.gxf6 Nxf3 0-1

Solution (Many Springs Quads, p. 31): 1...Nd1+! 2.Be3 Qe1+ 3.Qf1 Bxe3+ 4.Kh1 Qxf1 mate.

2006 Governor's Cup

by IM Amon Simutowe

The Governor's Cup was a great success. It is one of the few tournaments in the US where the sponsors and organizers walk up to you to welcome you. I will be a regular participant due to the wonderful experience I had.

I scored 4/5 and tied for 1st with Ehlvest and Yermolinsky. My only loss was against Ehlvest. I would have loved to annotate my terrible loss against Ehlvest for the public, but I plan to use the variation soon and hope the chess community will understand. I am sure someone will try the line Ehlvest used again, hoping I have not done my homework.

Top standings (Open)

1st-3rd: GM Ehlvest 2618 (EST), GM Yermolinsky 2549 (USA), IM Simutowe 2458 (ZAM) 4. **3rd-6th:** GM Kudrin 2551 (USA), IM Donaldson 2405 (USA), FM Karklins 2246 (USA), 3.5. **7th-8th:** GM Wojtkiewicz 2570 (USA), IM Kustar (HUN) 2375, 3.

QGD Semi-Slav D31

Amon Simutowe 2458

S. Turmo 2076

Governor's Cup 2006

1.d4

I decided to annotate this game because of my opponent's sixth move. It would probably be of more interest to players who like positional chess

1...Nf6 2.c4 e6 3.Nc3 d5 4.Nf3 Be7 5.Bf4 0-0 6.e3 a6?!

Black should have played 6...dxc4 if he intended to play ...a6 followed by ..b5 - e.g., 6...dxc4 7.Bxc4 a6 8.0-0 (8.a4 c5) 8...b5. 7.c5

Demonstrates the weakness of Black's position after a6 7...b6 8.b4

[8.cxb6 cxb6 9.Ne5 Bb7 10.Bd3 is also a good option for White but it gives Black some chances.

8...bxc5 9.bxc5 Nc6 10.h3

Preventing ..Nh5. White needs his dark-squared bishop. This position is technically won. Black allowed White to get an advantage without a big fight.

10...a5?

This is a poor move but it is difficult to suggest a good one. One would imagine that Black is preparing ..Nb4 in the near future but that move would only be effective if the a2-pawn was on a4. 10..Nb4 in this case is not a strong move because of a3

11.Bb5

White is already much better. All he has to do is play natural moves

11...Bd7 12.0-0 Ne4 13.Nxe4 dxe4

14.Nd2 f5 15.Qa4 Nb8 16.Bxd7

16.c6 Be8 17.f3 is another way of maintaining an advantage.

16...Nxd7

16...Qxd7? loses after 17.Qxd7 Nxd7 18.Bxc7+-.

17.Qc6



Black has to decide the pawn to give - c7 or e5

17...e5 18.Qe6+ Kh8 19.Bxe5 Nxe5 20.Qxe5 Ra6 21.Rad1 Qd7

22.f3 Bg5 23.Nc4 Re8 24.Qg3 Rg6 25.fxe4! Bf6

25...Rxe4 loses after 26.Ne5 Bxe3+ 27.Qxe3! Rxe3 28.Nxd7+- 26.Qf4 Qa4

26...Rxe4 27.Qxf5+-; 26...fxe4 27.Ne5! (diagram)



27...Bxe5 28.Qf8+ Rxf8 29.Rxf8 mate.

27.exf5 Resigns

1-0

QGD Semi-Slav D31

Amon Simutowe 2458

K. Wasiluk 2059

Governor's Cup 2006

1.d4

The rating difference between me and Wasiluk is significant. However, I decided to annotate this game because my teenage opponent fought valiantly. I also think he is underrated.

1...d5 2.c4 c6 3.Nc3 Nf6 4.e3 e6 5.h3 Nbd7 6.cxd5 exd5 7.Qc2

Simutowe-Suarez, Tx Chp. 2005 continued 7.g4 Bb4 8.f3 Qc7 9.Nge2. In the present game Simutowe uses piece control of e4 as a precondition of g4-g5

7...Bd6 8.g4 Qe7 9.Bd3 Nf8 10.g5 Nh5 11.Kf1!?

I find it hard to evaluate this move even though I am the one who played it.

11...Qxg5?!

I consider this move dubious only from the perspective that my opponent is human. Computers usually defend successfully in this type of positions. Humans usually falter because the complications are too much for a human brain

Good is 11...g6; much better is 11...Ne6 as it eliminates the possibility of e4. White is forced to play 12.h4, when Black would simply consolidate by 12...g6 (also strong is 12...h6).



12.e4 Nf4 13.Bxf4 Bxf4 14.exd5 cxd5 15.Bb5+

This position is interesting. At first it appeared that Black was better, but after ...

15...Bd7

I had trouble choosing between ... 16.Re1+

... and the variations after 16.Bxd7+ ...:

(a) 16...Nxd7! This is the move which made me choose 16.Re1+ as after 17.h4 Qh5 18.Qe2+ Qxe2+ 19.Ngxe2 Bd6 20.Nxd5 0-0 21.Nec3 Rfd8 22.Ke2, White only gains a space advantage.

Keeping the position complicated is better for White in this position.

(b) 16...Kxd7 loses to 17.Qa4+ Ke7 18.Nf3 Qh5 (18... Qf5 also loses after 19.Ne5 Bxe5 20.dxe5 Qd3+ 21.Kg2 Qg6+ 22.Kh2 Qc6 23.Qb4+ Ke8 24.Rhd1 Rd8 25.Rac1 with a decisive advantage) 19.Ne5 Bxe5 20.Nxd5+ Kd6 21.dxe5+ Kxd5 22.Qb3+ Kd4 (22... Kxe5? 23.Qb5+ taking the Queen on h5) 23.Re1 Qf5 24.Qb4+ Kd5 (24... Kd3 25.Re3+ Kc2 26.Qc3+ Kb1 27.Kg2+ Kxa2 28.Qb3#) 25.Qxb7+ winning the rook.

16...Kd8



17.Qb3 Be6

I overlooked this move.

18.Be2

Keeping the pressure on Black by threatening Qb7, Bf3 and Nf3. It's not easy for Black to calculate the complications that arise after the aforementioned moves. Black's position is not really lost but as I indicated earlier, it is difficult for a human brain to find the right moves in this position.

18...Kc7!

Wasiluk wants to play ..Rd8 and my attack would be history

19.Nf3 Qf5 20.Ne5! Bxe5 21.Nb5+

I played this move too quickly. 21.Nxd5+ is more cogent:



(a) White wins after 21...Kd6 22.Qb4+ Kxd5 23.Qc5+ Ke4 24.Bg4+ Kf4 (24...Kd3 25.Qc3#) 25.Qc1#;

(b) 21...Kd8 22.Qxb7 Rb8?? 23.Qe7+ Kc8 24.Rc1+ +;

(c) 21...Bxd5 22.Qxd5 Rd8?? (22...Re8 23.Bf3! Qd3+ 24.Kg1 Qg6+ 25.Bg2 when White threatens Qb7, and dxe5) 23.Rc1+ winning;

(d) 21...Kd7 22.Qxb7+ Kd6 23.Qc7+ Kxd5 24.Qc5+ Ke4 25.Bg4+ +;

(c) 21...Kc8(!) [Simutowe gave no analysis. White regains material in the forced line 22.Ne7+ Kb8 23.d5 Qf6 24.Nc6+ Kc7 25.Nxe5 Qxe5 26.dxe6 Qxe6 27.Qg3+!, and still has the initiative. - SKA]

21...Kb8 22.Bg4 Qf4 23.dxe5 Qg5

Probably the best chance for Black is 23...Qc4+ 24.Qxc4 dxc4 25.Bxe6 fxe6 26.Nd6.

24.Nd6 Qe7 25.Bf3 f6 26.Bxd5 fxe5 27.Rxe5

Wasiluk resigned. I used 25 minutes compared to my opponent's near full time. I was generally impressed with Wasiluk's style. I hope he will become a titled player in the future.

1-0



The *Brownsville Herald* (2/25) reports that former UTB chess coach Roman Dzindzichashvili, beyond the "personal reasons" he first gave for resigning, cited differences with his supervisors. He said he was kept out of the planning on which tournaments the team would play in, and was told whether he would attend. When Dzindzi, who likes to coach from his computer late into the night, was asked to come in from 8 to 5, he called it quits. - SKA

Minutes for the TCA Fall 2005 Meeting held Sept. 4 in Houston

by Lorraine Widener, TCA Secretary

I. The meeting was called to order at 8:40 a.m. Members in attendance included George John, President; Lorraine Widener, Secretary; Mario Leal, *Texas Knights* Editor; Luis Salinas, Bob James, Susan Breeding, Michael Simpson, Jim Stallings, Clemente Rendon, Rade Milovanovic, Paul Haney, Thomas Scarlattella, Carmen Chairez, Aurelio Gonzalez, James Pembenton, Robert Jones, Lucy James, and Frank Lawrence.

II. Reading of the minutes. George John moved to waive the reading of the minutes. By a show of hands, the decision was unanimous.

III. Treasurer's Report. George noted that the TCA account had increased to over \$31,000.00

IV. President's Report. Texas is 10% of the USCF with over 8,000 members. The Texas State Scholastic Tournament was self-organized with a profit of over \$30,000.00. There are some plans for changes in 2007.

V. There was an emergency meeting at the regular scholastic meeting. The Bylaws were overruled. The result was that the ruling was rescinded.

Jim Stallings, UTD Outreach and Recruiter, spoke about the No Child Left Behind Act and about Texas SES.

Alexey Root is coming out with a chess curriculum in the Spring.

On November 12th-13th, 2005, El Paso is doing their first scholastic regional championship in some time with guest Susan Polgar.

We do not have a regional director in El Paso.

Bob James informed us that the website for the SES is "<http://www.tutorsforkids.org>".

The RVG has 1,091 participants in regionals including four counties.

George thanked the membership for the opportunity to serve as president for two years.

V. Old Business

A) Bid Results - All were unopposed and found acceptable.

The 2006 Texas Championships was awarded to Region 2. (Wataga Chess Club)

The 2007 South West Open was awarded to Region 8.

The 2007 State Grade and Collegiate Championship were awarded to the Dallas Chess Club.

VI. New Business

Election results were delivered by Lorraine Widener. The results were as follows:

President: Clemente Rendon, 107 votes; Bob James, 47 votes.

Vice-President: Victor Flores, 121 votes; Vicente Flores, 12 votes.

Secretary: Lorraine Widener, 137 votes; Jim Hallingsworth, 1 vote.

Treasurer: Nelda Rogers, 82 votes; Barbara Swafford, 56 votes.

The results committee was headed by Francisco Guadalupe, Lorraine Widener, and Nancy Sawyer.

Motion 1: George John moved that we accept the results from the election. Michael Simpson seconded. Discussion included verification that Francisco Guadalupe was from Texas. The motion passed unanimously and the new officers took their place.

There were no advance agenda items.

Clemente Rendon indicated a point of information that there were only two elected officers in attendance. Michael Simpson stated that Article 6 indicated that there was a quorum.

Motion 2: Gary Gaiffe had nine motions brought to the table by Mario Leal. Michael Simpson motioned we adjourn ten minutes to have a chance to read through the motions. George John seconded. We adjourned at 9:15 a.m. and called the meeting to order at 9:25 a.m. Motions were tabled for the 2006 TCA Spring Meeting.

Motion 3: Luis Salinas moved that Gary's motions be discussed at the 2006 Texas Scholastic Championships Meeting. Michael Simpson seconded.

Motion 4: Luis Salinas moved that we give \$1,000.00 to the organizer to organize the Texas Masters. Bob James seconded. The motion passed unanimously.

Motion 5: Bob James moved that we pay the *Texas Knights* editor \$300.00 per issue in addition to the costs and that the motion goes into effect immediately. The motion passed unanimously.

Motion 6: Clemente Rendon moved that the scholastic committee be given authorization to provide three \$1,000.00 scholarships at the 2006 Texas Scholastic Tournament given at the time of college at the discretion of the scholastic committee. Motion was tabled for the 2006 TCA Spring Meeting.

Motion 7: Michael Simpson moved that we defer his 20-page proposal to the bylaws committee and have a link available to that proposed amendment to the

bylaws placed on the TCA Website for public review and comments. In addition this proposal will be voted on at the 2006 Scholastic Meeting. George John seconded. There was no discussion and motion passed unanimously.

Motion 8: Susan Breeding moved that the scholastic committee waive entry fees for the Texas Scholastic Championships up to 20 students per year. All applications must be submitted by a chess coach or sponsor. Scholastic committee would have to come up with the application criteria. TCA would cover this fee regardless of whether they are running the tournament or not. Bob James seconded. Michael Simpson asked what was the entry fee. There was no additional discussion and the membership passed the motion unanimously.

Motion 9: Bob James moved that the quarterly financial report provided by the treasurer be published as available on the website and in *Texas Knights*. Motion was seconded by George John and passed unanimously.

Motion 10: George John moved to have Bob James motion go into effect immediately. Motion passed unanimously by a show of hands.

Point of order from Luis Salinas indicated that there were two TCA bank accounts that were set up short term. The 90 day time period was about to end. He indicated we needed to change the signatures on the account or let the account expire.

Bob James motioned to adjourn the meeting and Michael Simpson seconded. Meeting was adjourned at 10:25 a.m.

Minutes for the TCA Texas Grades Emergency Meeting

held Nov. 19 in Houston

by Nelda Rogers, TCA Treasurer

The meeting was called to order at 4:20 p.m.

Members in attendance included Clemente Rendon, President; Victor Jon Flores, Vice President; Nelda Rogers, Treasurer; Mario Leal, Luis Salinas, Norma Guerra, Elsa Pena, Marc Fuhrmann, Michael Ferguson, Robert Jones, Robert Rausche, Rusty Harwood, David Valdez, Carmen Chairez, Benjamin Wheeler, Torey Nevzil, James Pemberleton and Enrique Rios

President Rendon clarified that the TCA Board of Directors had authorized a special meeting back in October. However, due to the delay in printing *Texas Knights* the notification of writing in the *Texas Knights*

was not made. Due to the surrounding circumstances, and the need for the administration to conduct business, an emergency meeting was declared; however the floor would be closed to any new motions, and would further be closed to voting. Due to the circumstances surrounding the meeting, only straw polls would be taken; any unsettled business would be discussed at the 2006 Spring Scholastic Meeting.

Motion 1 (Robert Sturgeon): Move that a new Region IX be created which includes the following counties: Gaines, Dawson, Borden, Scurry, Asher, Jones, Schleicher, Stephens, Andrews, Martin, Howard, Mitchell, Nolan, Taylor, Calahan, Eastland, Brown, Ector, Midland, Glasscock, Sterling, Coke, Runnels, Coleman, Crane, Upton, Irion, Tom Green, Concho, McCulloch, San Saba, Crockett, Scleicher, Menard, Mason, Sutton, Kimble. Straw poll: 6 for, 10 against

Motion 2 (Michael Ferguson): Move that we adopt the new bylaw wording proposed by Michael Simpson Straw poll: 7 for, 7 against.

Motion 3 (Marc Fuhrmann): Move that the TCA restructure its current bidding structure and all future contracts so that it runs all of its own tournaments. The TCA will still retain the option to bid out any tournament to an organizer. The tournament however would be contracted on a cost + one basis. Straw poll: 5 for, 8 against

Motion 4 (Michael Ferguson): Move that the Junior Tournament Fee from all tournaments be removed beginning March 1st, 2006. Straw poll: 6 for, 8 Against.

Motion 5 (Michael Ferguson): Move that the Bylaws be amended so that the immediate past president does not serve as chair or on the Bylaws committee.

The motion was tabled since the Board of Directors had already decided on the matter, the immediate past president had agreed to step down from the position of Bylaw Chairs in favor of a candidate with arguably more legal/ bylaws knowledge.

Enrique Rios motioned to adjourn the meeting, and Marc Fuhrmann seconded. Meeting was adjourned at 5:55 p.m.

Editor's note: TCA Bylaws (Article 5.E) state that the editor "shall publish the financial statement provided by the Treasurer at the Annual Business Meeting in the next issue of Texas Knights that follows this meeting." The 2004-05 statement has not been provided a week after I requested it from the past TCA treasurer, so I am going to press with what I have.

- SKA

College spotlight Sam Copeland

Sam Copeland, 20, is a junior from South Carolina attending UTD on a National Merit Scholarship with a major in geography. He recently played in the U.S. Chess League for the Dallas Destiny. His rating has been over 2000 since last April.

Notes by Sam Copeland

French Winawer C17

Kgambitman 1886
Sam Copeland 1853

ICC 1-31-05

This relatively quick online game is in my opinion my best game thus far. Although there were several mistakes by both sides, the play was dynamic, uncompromising, and instructive. I could not ask for more in a game.

1.e4 e6 2.d4 d5 3.Nc3 Bb4 4.e5 c5 5.a3 Ba5!?

The Armenian variation, which has been played by players such as Khalifman, Vaganian, and Lputian. It is a buncha fun, but even I think it is a little questionable.

6.b4

An old pawn sacrifice. Accepting is well known to be dangerous: **6...cxb4?! 7.Nb5 Nc6 8.axb4 Bxb4+ 9.c3 Be7 10.Bd3 a6 11.Qg4 Kf8 12. Ba3 with an attack.**

6...cxd4 7.Nb5 Qg4

Heads to some fun poison pawn lines.

7...Bc7 8.Nxc7+ Qxc7 9.Nf3 Nc6 10.Bf4 Nge7 11.Bd3 Ng6 12.Bxg6

Playing for the solid plus instead of the tactical one. **12.Bg3! Ngxe5 13.Nxe5 Nxe5 14.0-0 (14. Bb5+ Bd7 15.Bxd7+ Kxd7 16.Qxd4 f6 17.0-0 with attack) 14...f6 15.Re1 0-0 Riemersma-Muller.**

12...hxg6 13.0-0 Bd7

13...g5?! (Fritz approved) 14. Nxc5 f6 15.Nf3 is very dangerous for Black.

14.Re1

14.Nxd4 both regaining and sacrificing a pawn for an unclear position **14...Nxd4 15.Qxd4 Qxc2 16. Rfc1 Qf5 17.Bg3 Bc6 18.a4 Qe4 19. Qxe4 dxe4 20.b5 Bd5 21.Rc7 g5 ∞.**

14...0-0-0!?

This is certainly a risky line for Black, but even now I am not sure it was a bad choice. If I go kingside, my pawn structure makes me concerned about an attack on the h-file, with rook lifts and Ng5, meanwhile f6 is not as useful as it often is because of my doubled pawns. I could play it safe, and maybe even leave my king in the center; but I didn't and I don't regret it even if White did miss stronger options.

14...0-0 15.Ng5!?, with the simple plan of Qd3-Qh3 and mate.

(a) **15...f6** a thematic move, but White can maintain his dangerous attack with simple play. **16.Nf3 b5** other moves allow White similar play. **17.Qd2 g5 (17...f5? the only move other than g5 but the g5 hole is too dangerous: 18.Ng5 Rfc8 19. Qd3 Ne7 20.Qh3! Qxc2 21.Qh7+ Kf8 22.Nf3! this surprising retreat contains a strong threat 22...Rc4 (22...Kf7 23.Rac1 Qd3 24.Rxc8 Bxc8 (24...Rxc8 25.Bg5 [Δ Bxe7] 25...Re8 26.Bf6+- [or 25...Ng8 26. Nh4 +- - SKA]) 25.Bg5 [or Bh6 - SKA] and Bxe7 will win) 23.Bh6! the sneaky point of Nf3 23...gxh6 24.Qxh6+ Ke8 25.Qh8+ Kf7 26. Ng5#) 18.Bg3 f5 19. Qxg5 with attack.**

(b) **15...Rfc8 16.Qd3** and the attack is dangerous while f6 cannot defend it because of **16...f6 17.Nf3 g5 18.Bg3 f5 19.Nxc5 .**

15.Nxd4

15.b5 Na5 16.Bg5 Rde8 17.a4 Nc4+/= and the knight gives Black a reasonable position.

15...Nxd4 16.Qxd4 Kb8

Not giving White a target for his pawns as after b6.

17.a4

17.Be3! White forces the b6 target, this is definitely White's strongest move. **17...b6 18.a4 Rh5 19.a5 b5** and White is certainly better, but it is not easy to continue the attack, because Black's bishop holds the light squares together while there are no easy infiltration points on the dark squares.

17...Rh4!

This move is essential for me. The threat of g5 nearly forces g3 when Black gains counterplay down the h-file as in the game. Without this move the game would be all White's which is why he should have played Be3!

18.g3

18.Rec1!? the main alternative and it is actually a very strong one! However, I think Black can maintain the balance with an interesting exchange sacrifice: **18...g5 19.g3 Rg4 20.f3 gxf4 21.fxg4 fxg3 22. h3! (22.hxg3 f6 23.Re1 Rc8 =) 22... f6 23.exf6 e5 24.Qxd5 Bxg4 25. Qc5 Qxc5+ 26.bxc5 Bxh3 27. fxg7 Rg8 28.Re1 Rxc7 29.Rxe5 Bd7** and the position is in a state of dynamic balance. There is no way for either side to progress.

18...Rh5 19.a5 Rdh8 20.h4

20.Be3? Rxc2 21.Qxa7+ Kc8 22.Qa8+ Qb8 23.Qxb8+ Kxb8 and the advantage is Black's.

20...a6

My plan is to use the opposite colored bishops to blockade the queenside.

21.Be3 Bc6 22.Qa7+

22.f4 Bb5+/=.

22...Kc8 23.Bb6 Qe7?

A risky move. I am leaving my king to fend for itself while I hunt White's king. **23...Qb8 (forced) 24. Qxb8+ Kxb8+/=.**

24.b5?

This move I was prepared for. What I was not prepared for is the.

Fritz's brilliant resource 24.c4! forcing a win: Now b5 is threatened and I must avoid opening the d-file. 24...d4 (24...Rxb4 25.b5! +-) 25.b5 Bf3 26.Re4!! (Good heavens! Just when Rxb4 seems powerful, Fritz finds this heavenly move. I cannot even imagine a human finding this over the board. Black is toast now, this is why Qe7 is a "blunder". Not 26.bxa6?? Rxb4! 27.gxh4 Qg5+! 28.hxg5 Rh1#) 26...Bxe4 27.Rd1+ Rd8 28.Bxd8 Qxd8 29.Rxd4 Qe7 30.Qa8+ Kc7 31.b6+ Kc6 32.Qc8+ and mates.

24...axb5 25.a6

For a long time I thought this was a blunder, but now I realize that White can draw with good play, which is probably his best bet at this point. His queen is so off-sides that Rxb4 is a devastating threat. 25.f4? Rxb4! 26.gxh4 Qxh4 27.Kf1 d4 (After this, Fritz evaluates the position as -1.50. Enough said, I think!) 28.Ke2 Qxf4 29.Bxd4 Rh2+ 30.Bf2 Qxe5+ 31.Kd2 Qf4+ 32.Kc3 Rxf2+.

25...Rxb4!! (diagram)

Exciting! I was very pleased to play this move even if it is not winning as I first thought.



26.gxh4?

The final mistake 26.Kf1! is a strong move which I underestimated. I think Black can only get a perpetual now, though White must tread softly. 26...Rh1+ 27.Ke2 R1h5 28.Bc5! Qc7 29.Bd6 Rxe5+ 30.Bxe5 Qxe5+ 31.Kd2 Qg5+ 32.Kd3 Qf5+ 33.Kd2 Qg5+ =, and the perpetual is both sides best bet as White must be careful to avoid surprises like

d4+ and possible introductions of my rook with check. Meanwhile my exchange deficit means I must also acquiesce to the draw.

26...Qxh4 27.Kf1?

Now Black is mating in nine. 27.Qa8+ Kd7 28.Qxh8 Qxh8 29.a7 d4 (-3.00 according to Fritz, but...) 30.f3 Bxf3! (other moves only allow Black a perpetual: (30...Qh3 31.Rf1 Qg3+ 32.Kh1 Bxf3+ 33.Rxf3 Qxf3+ =) 31.Kf2 Qh3 32.Bxd4 b6 and Black has some winning chances now that he can stop the a-pawn, but I truly do not know what would happen here in a game. At least Black should not be able to lose this.

27...Qc4+ 28.Re2

28.Kg2 Qg4+ 29.Kf1 Rh1#.

28...Rh1+ 29.Kg2 Qg4+!

With a bishop and a queen against such an open king, who needs a rook?!

30.Kxh1 d4+

White resigned because of 31. f3 Bxf3+ 32. Kh2 Qh4+ 33. Kg1 Qh1+ 34. Kf2 Qg2+ and Qxe2#.

0-1

Texas Action Championship

April 29

San Antonio

Game/30, full K

TNI Building, 4410 Medical Dr. at Ewing Halsell

First floor conference room. South Texas Medical Center, 1 mile north of N Loop 410. Exit north on Fredericksburg Rd., turn left on Medical Dr. Free parking. 210-575-6719.

Prizes: \$750 (based on 40 players, 2/3 gtd.):

\$250 - \$100 ; U2100 \$100 ; U1900 \$90 ; U1700 \$80 ; U1500 \$70 ; U1300 \$60

Entry fees: \$25 if rec'd by 4/27, \$30 site. TCA membership required.

Junior (U19) or Senior (65+) entry: \$15 by 4/27, \$20 site. Counts 2/3 toward "based on."

Registration: 10:30-11:30 a.m. Half point bye any one round, notice before Rd. 2.

Rounds: a.s.a.p. w/ 15 minute breaks, approximately 12 - 1:15 - 2:30 - 3:34 - 5

Time control: Game/30. Rated full K (USCF has discontinued 1/2 K option)

Entries: San Antonio Chess Club, P.O. Box 501, Helotes, TX 78023.

Information: 210-695-2324 ; schachlied@yahoo.com ; http://home.satx.rr.com/sachess/

Texas State/Amateur Championship

May 26-29 or 27-29

Houston

7 rounds

Marriott West Loop 1750 West Loop South, Houston 77027

\$79 flat rate, 800-613-3982 or 713-960-0111. Reserve by 5/12 and ask for chess rates.

Prizes: \$8,350 (based on 175 full entries. Two sections & scholastic side events.)

Championship (2000+)

	Expert	U2400
First:	\$1,000	\$800
Second:	\$500	\$400
Third:	\$250	

Time Controls

Rds 1-3 G/90, 30 sec increment

Rds 4-7 G/120, 30 sec increment

Amateur (open to U2000)

	B	C	U1400	U1200	U1000	Unr.
First:	\$800	\$600	\$500	\$500	\$400	\$300
Second:	\$400	\$300	\$250	\$250	<i>Foreign unrated must play</i>	
Third:	\$200	\$150	\$125	\$125	<i>in Championship section.</i>	

Time Controls

Rds 1-7 30/90, SD/1

Rd 1 of 3-day is G/120 (deduct 5 min. for delay)

Entry fees: \$69 if rec. by 5/18, \$80 at site. \$45 Junior (U19)/Senior (65+)/full time College/H'cap if rec'd by 5/18, \$55 later. TCA memb. required (\$10 adult, \$7.50 jr/f-t student, \$1 jr. tmt., \$15 family), o.s.a. Add \$5 for CC phone entries; pre-reg requires prepayment. After 5/24 all registration and changes on site only; all changes including withdrawals, \$10 after 5/24/06.

4-day: Reg Fri. 5/26, 6:15 p.m.-7:15.

Rds Fri: 7:45, Sat:2:30 p.m.-8:00, Sun:10 a.m.-4:00, Mon: 9 a.m.-2:30.

3-day: Reg Sat 5/27 9-9:30 a.m., Rd 1 at 10 a.m. then merge with 4 day.

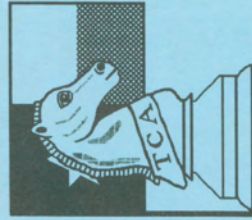
Byes: Up to two 1/2 pt. byes if requested before Rd. 2; byes for Rds. 6 AND 7 not permitted.

Entries: Dallas Chess Club, c/o Susan Breeding, 7909 La Guardia Drive, Plano, TX 75025.

Info: S. Breeding, 972.208.1802, susanbreeding@hotmail.com www.dallaschess.com

NS. NC. W. FIDE

K-12 Scholastic Saturday, 5/27. 5-SS, Rds 1-3 G/30, rds 4-5 G/45. EF: \$26 by 5/18, \$39 later. CC phone entries add \$5. Pre-registration requires pre-paymt. After 5/24/06 all registration and changes on site only; all changes \$10 after 5/24/06. No refunds after 5/24, \$10 handling fee for refunds before 5/25. Entries do not count toward base in Championship and Amateur. **Registration** 8:15-8:45 a.m., Rd 1 at 9:30 a.m., rest ASAP with small lunch break. **Sections:** K-12 Championship and K-12 U750. **Prizes:** Trophies to Top 12 individuals, 5 teams in each section. K-12 U750 also top 3 unrateds. Medals to plus scores who do not win a trophy. Entries & info – see above.

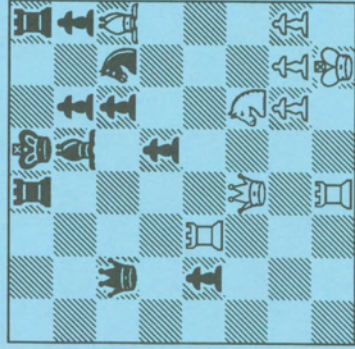


Texas Chess Association
P.O. Box 501
Helotes, TX 78023-0501

Non-Profit Org.
U.S. Postage
PAID
San Antonio, TX
Permit No. 445

See inside front cover for
TCA membership information.

Timur Gareev - Carlos Martinez
Calvia Olympiad 2004



White to move and win
Solution: page 31

