

TEXAS KNIGHTS

The official publication of the Texas Chess Association

Volume 53, Number 4

P.O. Box 501, Helotes, TX 78023

Summer 2012

GM Julio Sadorra is new Texas champ



Sadorra plays last year's co-champion Francisco Guadalupe II in Round 4

Editor's farewell.....	3
Treasurer's report.....	4
Ramachandran wins U.S. Junior Open – Franc Guadalupe.....	5
Ivanov wins U.S. Senior Open – Franc Guadalupe.....	6
Texas State and Amateur Championships.....	7
San Antonio City Championship.....	17

Your TCA ballot is enclosed

TEXAS CHESS ASSOCIATION www.texaschess.org

President: Clemente Rendon, P.O. Box 3267, Brownsville, TX 78523-3267; crendon44@hotmail.com.
Vice-President: Lakshmana Viswanath, 2009 Manzanares Dr., Laredo, TX 78045; lakshmana.viswanath@gmail.com.
Secretary: Binny Nanavati, binnyanavati@gmail.com
Treasurer: Barb Swafford, 2709 Longhorn Trail, Crowley, TX 76036-4719; barbrounds@gmail.com.
Editor: Selby Anderson, P.O. Box 501, Helotes, TX 78023; 210-695-2324; schachlied@yahoo.com.
Webmaster: Peter Kappler, texaschess@gmail.com.
Tournament Clearinghouse: Eugene Kohnitz, chessensei@aol.com.

Texas Chess Association is a 501(c)(3) educational nonprofit corporation dedicated to promoting chess in Texas.
Membership Dues (annual): Regular \$10, Junior (18 and under) or Student: \$7.50. Foreign: Canada and Mexico \$12.50, others \$17.50. Patron: \$25 (receives 1st class mailing and Hall of Honor listing). Family: \$15. Non- subscribing: \$5. Club: \$25 (includes one free ¼ page ad a year). Scholastic Club: \$10. Foreign Club: \$40.
Send to **TCA Treasurer, 2709 Longhorn Trail, Crowley, TX 76036-4719**. Give name, address, city, state and zip code; also phone and e-mail (optional). Contributions beyond membership fees are tax deductible.

TCA Hall of Honor

Selby Anderson	R. Lynn Leone family	Eddie Rios
Joseph Binder	Patrick C. Long	Luis Salinas
Clarence Callaway, Jr.	Mark Marshall	Wayne Sampson
Michael E. Carpenter	Mark E. McCue	Jose Luis Silva
George W. Church, Jr.	Tony Meza	James Stallings
Raymond Doo	Jerry Milburn	Clayton Swafford family
Ed Erwin	Rade Milovanovic	James Thames
Charles Fricks	Bobby G. Moore	Rodney Thomas
Edward Guetzow	George A. Mota	Harmon Throneberry
James Houghtaling, Jr.	John Niven	Louis Thurston
Peter Kappler	Tim Redman	Lakshmana Viswanath family
John Kolts	Clemente Rendon	William R. Williams

Contributors this issue: *Chess Life Online*, Steven Dampier, Franc Guadalupe, Mark Harden, J.P. Hyltin,

Game annotations if not attributed are a collaboration of NM Selby Anderson and Fritz 6.

Send submissions by e-mail to schachlied@yahoo.com, or mail to P.O. Box 501, Helotes, TX 78023 (include phone).

Deadline next issue: Oct. 15. All contents of *Texas Knights* © 2012 by the Texas Chess Association, Inc. No part may be reproduced in any way without express consent of the editor. Ad rates: \$50/page, \$35/half, \$20/quarter, \$1/line.

Cover photo: Franc Guadalupe

Editor's farewell

It has been fully 25 years since I published my first *Texas Knights* issue. I was a recently titled National Master and my rating was still upwardly mobile. More importantly, my love of the game was strong enough to overcome the element of drudgery that often accompanies production.

When I ran my first issue in early 1988, desktop publishing was in its infancy. I actually ran off my first proof copies on a dot matrix printer. Chess on the Internet was limited to crude bulletin board services like Leisure Linc (anyone remember *that?*) Real-time blitz on ICC was years away. Commercially available chess-playing programs were abysmally bad until ChessMachine with its random brute force search came along in 1991. Four years later, Kasparov was using Fritz to conjure an opening innovation against Anand in a world title match.

The Texas Junior Championship in the 1980s was a small gathering of top high school players. There was no scholastic team chess, but that changed quickly with leadership from Al Woolum in Austin, and later Jim Liptrap and George John in Houston, who ran the first Texas Scholastic along USCF lines in 1996. A huge push came from the explosion of scholastic chess in the Rio Grande Valley, with Brownsville's J.J. Guajardo leading the way.

College chess got an enormous boost toward the end of the 90s when UT-Dallas, thanks to Tim Redman and Jim Stallings, became the second school in the nation to offer full scholarships for strong chess players. UT-Brownsville and Texas Tech followed suit. Suddenly there were GMs in our midst, where once Joe Bradford had reigned almost unopposed.

This had a ripple effect, as the quality of coaching and playing strength of youth continued to improve. Our immigrant and first generation Asian-American youth have changed the playing field with their remarkable chess achievements.

Becoming a chess teacher, first in after-school programs and summer chess camps, and lately in a private school enrichment curriculum, has made me think about what I find of value in chess. This especially comes up when I encounter students for whom chess is a hard sell.

As Lasker correctly observed, chess is essentially a fight. Less certain is his assertion that this is something human nature "mostly seems to delight in."

What I appreciate most about chess is how it gets people to do their own thinking. To a large extent this, too, is contrary to much of human nature.

I fancy that part of the appeal of chess during the Soviet era, or centuries earlier under the shadow of the Inquisition, was that chess allowed one freedom of thought: the ability to test ideas not by their conformity to dogma or group opinion, but by testing them in a kind of ideal laboratory. Ideas get tried in a court of rough justice that the world often seems to lack.

Fox and James note in *The Complete Chess Addict* that chess-playing artists, including musicians and actors, as a whole make up a much stronger fantasy chess team than one made up of mathematicians and scientists. I know, it's crazy to exclude Lasker, Anderssen, and Euwe as mathematicians, and Botvinnik the engineer as a scientist. What about computer security geeks like Joe Bradford? Sorry, it's like celebrity golf in that book – and Bogie beats Einstein every time.

I found myself early on as a performer in the third grade, on stage singing "Tramp! Tramp! Tramp!" (to the same tune as "Jesus Loves the Little Children of the World") as a Civil War POW, singing wistfully from his cell. Now I like to sing "The Lady Is A Tramp" on a karaoke microphone.

I used to doodle in the margins of handouts to relieve classroom boredom. I got to be a reasonably good caricaturist, and at one point had the homeroom bulletin board turned into a gallery. My eleventh grade English teacher, since we were studying Hawthorne, was attired as a hot-looking Hester Prynne with the scarlet "A" on her chest.

Meet the new TK Editor

Franc Guadalupe is a USCF National Tournament Director, FIDE International Arbiter, and the FIDE Zonal President for the United States. Prior to his move to Texas in 2005, Franc was the President of the Florida Chess Association. He has been the chief tournament director of many national events, including the last two U.S. Opens and the 2009 SuperNationals, and has also been an arbiter at two U.S. Championships. Franc has organized many national events including several editions of the U.S. Class, U.S. Senior Open, U.S. Junior Open, and the National Youth Action. After organizing and directing tournaments, Franc often contributes articles to *Chess Life Online*. He is a member of the USCF Scholastic Committee and the USCF Tournament Directors Certification Committee. Franc is also the TCA Region V Director.

My love of drawing was a wave going back to early childhood when, having a chalkboard in my room, I emulated my dad's amazing car drawings.

He was a Pontiac salesman, the son of a cabinet maker and an artist who came over from Sweden in 1913. His "artistic temperament" was noted in the Sioux City Central High yearbook, where the Friedman sisters (aka Ann Landers and Abigail Van Buren) can also be found.

He did not find commercial success and became dissolute, and complained about the ruthless ways of the business world. He had a strange regard, distaste mixed with admiration, for Uncle Joe, a local civil aircraft mogul and pilot who had given my dad his first postwar job as an accountant.

It was like Willy Loman in *Death of a Salesman*, being tortured by the memory of that rich uncle saying, "You have to go into the jungle to fetch a diamond out!" He admires the successful man of the world, and he cannot tolerate being a loser.

My dad married a laundry heiress, and was spared the worst of life's hard knocks. Willie Anderson was no Willy Loman; he was lucky.

When I taught chess, I occasionally put up a thought for the week – something unrelated to chess except in the broadest sense. For example:

"To see what is in front of one's nose requires a constant struggle." – George Orwell

This was a twosome, juxtaposed on the board:

"If there's one thing in this world I can't stand, it's losers. I despise them."

– Gov. Arnold Schwarzenegger (to a group of high school students)

"The race is not to the swift, nor the battle to the strong, neither yet bread to the wise, nor yet riches to men of understanding, nor yet favor to men of skill; but time and chance happeneth to them all."

– Ecclesiastes 9:11

(Continued on page 15)

TCA Treasurer's Report

Prepared for July 1, 2012 by Barbara Swafford

Income

September memberships	\$ 60.00
October memberships	7.50
November memberships	40.00
December memberships	25.00
January memberships	92.50
February memberships (includes State)	229.00
March memberships	220.00
April memberships	45.00
May memberships	211.00
June memberships	35.00
July memberships (so far)	20.00
2011 Southwest Open memberships	455.00
2011 Texas State Grade and membership	294.00
Region 3 Scholastic Championships	69.00
Region 5 Scholastic Chp. and memberships	242.50
Region 6 Scholastic Championships	303.00
Region 7 Scholastic Championships	67.00
Region 8 Scholastic Championships	1,200.00
2012 Texas Scholastic Championships	9,987.00
2012 Texas State & Amateur Tournament	717.00
Hardesty Family donation	25.00
Jim Eoff donation	5.00
Harmon Throneberry donation	500.00
Total	\$14,849.50

Expenses

Texas Knights - Fall 2011	1,116.40
Texas Knights - Winter 2012	989.00
Texas Knights - Spring 2012	1,241.59
Bob Shao - 2011 Denker representative	300.00
Total	\$3,646.99
WF checking account balance	\$16,786.02
BOA checking account balance	\$ 9,917.44

Ramachandran Wins US Junior Open

By Franc Guadalupe

In the U.S. Junior Open, held July 15-17 in Houston after the US Senior Open, 305 players competed from 17 states. This easily smashed the previous attendance record of 243 set two years ago!

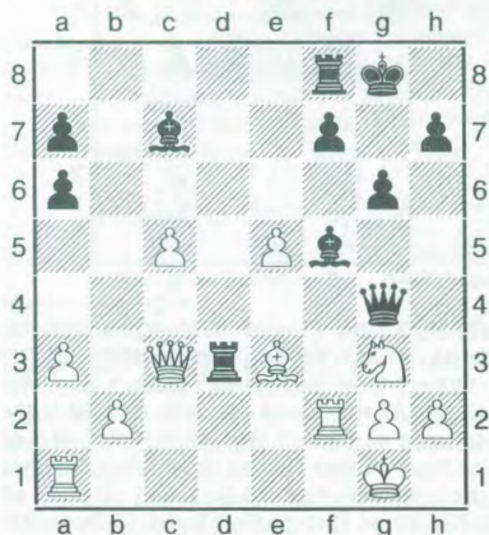
The top and premier division, the Under 21, was dominated by Expert Karthik Ramachandran. Although there were six masters in the field, Karthik, who entered the event with a 2157 rating, finished with a perfect 6-0 score including a 5th Round victory over top-seed Adarsh Jayakumar (2372) and a 6th Round win against NM Jonathan Chiang (2235). Unfortunately for Karthik he will not be eligible for the 2013 U.S. Junior Closed due to his age. All was not lost for him since, in addition to winning the Champion's plaque and \$500, he made master for the first time!

All alone in second place was Jonathan's "older" sister, 15-year old Sarah Chiang, who drew her game against Adarsh and won the others.

Chiang, Sarah 2255 - Shao, Andy 2138 [D90]

US Junior Open 2012, Rd. 6

1.d4 Nf6 2.c4 g6 3.Nc3 d5 4.Nf3 Bg7 5.Qa4+ Bd7 6.Qb3 dxc4 7.Qxc4 0-0 8.e4 Na6 9.e5 Be6 10.Qa4 Nd5 11.Bxa6 bxa6 12.0-0 Nb6 13.Qc2 Qc8 14.Be3 c5 15.dxc5 Nd7 16.Ne2 Nxe5 17.Nxe5 Bxe5 18. Bd4 Bc7 19.a3 Bf5 20.Qc3 e5 21.Be3 Be4 22.f4 Qg4 23.Rf2 Rad8 24.Ng3 Bf5 25.fxe5 Rd3



26.Nxf5! Qxf5 27.Qc4 Qd7 28.Bh6 Rd8 29.Raf1 Rd5 30.Rxf7! Qxf7 31.Rxf7 Kxf7 32.Bg5 1-0

Sarah, who is the highest U16 female in the country, improved her rating to a very lofty 2275! Hopefully she will be selected for the Junior Closed next year.

National Master Adithya Balasubramanian (2345) from UMBC finished alone in third place with five points. In the Under 15 division two players, Arizona's Richard Qi and Colorado's Jackson Chen, finished as co-champions with 5.5 points. The Under 11 division also had co-champions as Texas' Ram Krishna and West Virginia's Advait Patel drew their last round game to finish with 5.5 points. In the Under 8 division it was all Maggie Ni. She first entered this event two years ago as a four year old.

During the Opening Ceremonies of this year's U.S. Junior Open, Maggie led us in the Pledge of Allegiance. Just over a month ago, this young Texan saw her rating skyrocket to 1608 but bad results in five club events, with fast time controls, saw that rating drop to 1504. The slow games (G/120, d5) of the Junior Open were just what Maggie needed to bounce back, and bouncing she did! She finished with a perfect 6-0, improving her rating by 96 points to 1590! There were a total of 49 female players in the event. In recognition of their outstanding performance, both Sarah and Maggie will split the \$100 prize given by the organizer for the best tournament performance by a female.

The Blitz U21 was won by Texas' Expert Dachev Lin with a 6.5/8 record while West Virginia's Advait Patel totally dominated the U11 Division and won with a perfect 8.0 score! In the Bughouse event, Expert Nicholas Karas from California found himself without a partner, so he explained the event to Class D player Clarissa Garcia from Texas who had never played Bug before. That paid off as their team went on to capture first place!

The third event, the Not-A-Senior-Not-A-Junior attracted 61 players, including IM Danny Fernandez (2444), FM Warren Harper (2400), NM Francisco Guadalupe II (2312), FM Roberto Miramontes (2270), NM Jeffrey de Jesus (2261), and five Experts among the 16 players in the Open Division. After four rounds, Fernandez, Harper, Guadalupe and Miramontes were tied with three points. Harper and Miramontes won their last game leaving Fernandez and Guadalupe, who were playing each other, to fight for a win so that the one to emerge victorious could join the other two players. A long battle ensued to no avail as the game ended in a draw. That left Harper and Miramontes as the winners. The U2000 Division ended in a three-way tie between Manuel Gonzalez, Adolfo Balderas and Cornelius Jones. The U1600/Unrated division was won by previously unrated Gaston Lenotre, with a perfect 5-0. In the U1300, Fredric Hinkle finished a full point ahead of the field, with 4.5 points.

Ivanov wins Senior; Bradford earns ticket to Greece

By Franc Guadalupe

This year's Summer Chess Festival was held July 9-14 at the spacious facilities of the Marriott Houston South. The Festival included the U.S. Senior Open, the U.S. Junior Open, and the Not-A-Senior-Not-A-Junior Open. It also had several side events including Blitz, Bughouse, and a simul by the Senior Open defending Champion, GM Sergey Kudrin.

Sergey, who was among the 37 players entered in the six-day schedule of the Senior Open, was derailed in the second round and held to a draw by Oklahoma's Tom Braunlich. Meanwhile, IM Joe Bradford and fellow Texan Fred Pennington raced to a 3-0 record before the merge. In the three-day schedule, GM Alexander Ivanov, the 2010 U.S. Senior Champion, was among the 24 players in that session and easily raced to a 3-0 record along with Oregon's NM Carl Haessler.

After the merge, Ivanov beat Haessler while Bradford bested Pennington. After an easy win in Round 4, Kudrin beat Haessler in the fifth Round while Ivanov beat Bradford.

That set a confrontation between the two GMs in the last round which ended in a draw and gave Ivanov sole possession of first place and the \$1,250 prize.

On Board 2, IM Bradford, with the white pieces, was held to a draw by Tom Braunlich. In addition to his two draws against titled players, Tom, who entered the tournament with a 2185 rating, won his other four games. That was good enough for a 2nd-3rd place tie with Kudrin and a 31-point increase for Braunlich's rating, solidly over the 2200 mark once again (see Braunlich's award-winning *CLO* piece on draws). Tom and Sergey each received \$650 for their efforts.

The 61-year old Bradford, the highest placed player over the age of 60, won the right to be the official USCF representative at the World Senior Championship which will take place in Greece, 12-25 November. Bradford finished in a four-way tie for 4th place with Yefin Treger, John Carr, and John Wilson, each earning \$275. After his participation in the WSC, Joe also gets a \$500 stipend from the organizers and the \$250 Larry Englebretson Memorial stipend to aid with expenses at that event. The

latter award was given by the Houston Chess Club in memory of last year's over-60 winner Larry Englebretson who passed away earlier this year.

USCF President Ruth Haring was among the 61 participants from 16 states. Ruth finished with an even 3-3 score but had some excitement in Round 5 when her opponent, Joe Alexander, got stranded for 45 minutes in a malfunctioning elevator just as the game started! She agreed that Joe should not lose any time for that incident but ended up losing the game. She bounced back in the last round with a win over Robert Hatfield.

Bradford, Joseph 2408 - Ivanov, Alexander 2656 [A21] US Senior Open, Rd. 5

1.Nf3 g6 2.c4 Bg7 3.Nc3 d6 4.g3 e5 5.Bg2 Ne7 6.d3 h6 7.Rb1 f5 8.Nd2 0-0 9.b4 g5 10.Nb3 Nd7 11.Bb2 Nf6 12.Qc2 c6 13.b5 Be6 14.bxc6 bxc6 15.Ba3 Rc8 16.0-0 f4 17.Ne4 Nxe4 18.dxe4 c5 19.Rfd1 Qc7 20.Qd2 Rcd8 21.Na5 Nc6 22.Nxc6 Qxc6 23.Qc3 g4 24.Rd2 h5 25.Rbd1



25...Qc7 26.f3 Bh6 27.gxf4 Bxf4 28.e3 Bh6 29.fxg4 Bxg4 30.Rf1 Rxf1+ 31.Kxf1 Rf8+ 32.Rf2 Rxf2+ 33.Kxf2 Qf7+ 34.Kg1 Bf3 35.Bc1 Bxg2 36.Kxg2 Qg6+ 37.Kf2 Qxe4 38.Qd2 Bf8 39.Qd5+ Qxd5 40.cxd5 e4 41.Kg3 Bg7 42.Kh4 Kf7 43.Kg5 Ba1 44.Kf5 c4 45.Ba3 Ke7 46.Kxe4 a5 47.Bc1 Kf6 48.h4 Bc3 49.Ba3 Ke7 50.Bc1 Be1 51.Kd4 c3 52.Kd3 Kf6 53.e4 Ke5 54.Be3 Bxh4 55.Bd4+ Kf4 56.Bxc3 Bd8 57.Bd2+ Kf3 0-1

GM Sadorra wins Texas State Championship

GM Julio Sadorra dominated the state championship, held May 25-28 in Dallas, finishing a point ahead of the field with 6.5 out of 7. Sadorra, a business major at UTD who hails from the Philippines, earned his grandmaster title last year before winning the Southwest Open.

NM Christopher Toolin came in clear second with 5.5, winning the 2200-2399 prize.

Tied for third with 4.5 were NM Brad Sawyer, FM, Michael Langer and WFM Bayaraa Zorigt, who shared second plus third prizes. Also scoring 4.5 were Ruifeng Li and John L. Montgomery, who shared the U2200 prize. There were 29 players. (*Crosstable: page 16.*)

In the Amateur division with 129 players, there was a six-way tie with 6 points: Robert Sanchez, Alexander Jiang, Sathiyarayanan Vijayaraghavan, Jason Howell, Francisco Tort (=1st-3rd) and Adam Rinkleff (1st B).

The scholastic side event held on Saturday was won by Eric Shi and Aadarsh Krishnan with 4.5 out of 5. There were 35 players.

Franc Guadalupe directed for the Dallas Chess Club.

d3 25.Qb3 Bc5 26.Qa4 a5 27. Qd7 h5 28.Qxc7 Re7 29.Qb8+ Kh7 30.Qf4 Re2 31.Bc3 d2 32. Bd4 Bd6 33.Qxd6 Qxd6 34. Nxe2 Qg6 0-1

29.Bf5 Be6 30.Rf1 Bxf5 31.Rxf5 Rc2 32.b4 f6 33.Rf2 Rxf2 34. Kxf2 Ra8 35.Rg3 d5 36.b5 d4 37.b6 e4 38.Rb3 Kg7 39.b7 Rb8 40.a4 Kf7 41.a5 1-0

PRIZE WINNERS

CHAMPIONSHIP: *1st:* Julio Sadorra, 6.5, \$840; *2nd:* Christopher Toolin, 5.5, \$588; *3rd:* Brad Sawyer, Michael Langer, Bayaraa Zorigt, 4.5, \$120; *U2200:* Ruifeng Li, John Montgomery, 4.5, \$336.

AMATEUR: *1st-3rd:* Robert Sanchez, Alex Jiang, Sathiyarayanan Vijayaraghavan, Jason Howell, Francisco Tort, 6, \$235.20; *1st B:* Adam Rinkleff, 6, \$504; *2nd B:* Devina Devagharan, 5.5, \$252; *3rd B:* Khoa Minh Nguyen, Sanjay Annigeri, Michael Kneen \$42.0; *1st C:* David Li, 4.5, \$420; *2nd C:* Mark L Weisberg, Luke Robitaille, Matthew Trujillo, Tomisin Ogunfunmi, 4.0, \$78.75; *1st-2nd U1400:* Samuel Tian, Collin Khoi Le, Adrian Stacey, Nathaniel Li, 4, \$183.75; *1st U1200:* Cassidy Ferrel, 3.5, \$336; *1st Under 1000:* Spencer Christian, 2.5, \$252; *1st Unrated:* John Osoinach Jr., 3.5, \$168.

French Classical C11

John Montgomery 2136

Christopher Toolin 2249

Texas Championship 2012 (1)

1.e4 e6 2.d4 d5 3.Nc3 Nf6 4.e5 Nfd7 5.f4 c5 6.Nf3 Nc6 7.Be3 cxd4 8.Nxd4 Bc5 9.Qd2 0-0 10. 0-0-0 a6 11.Qf2 Bxd4 12.Bxd4 b5 13.Bd3 b4 14.Ne2 a5 15.Bc5 Nxc5 16.Qxc5 Bd7 17.Qf2 a4 18.Kb1 Qe7 19.h4 b3 20.Nc1 bxa2+ 21.Nxa2 Rfb8 22.Ka1 Na5 23.Rh3 Bb5 24.f5 Bxd3 25. Rdx3 Qb7 26.b3 axb3 27.cxb3 Qc7 28.Qe1 Qc2 29.Qb1 Qxg2 30.Rdg3 Qe2 31.Re3 Qd2 32.f6 Nc4 33.b4 Rxa2+ 34.Qxa2 0-1

Caro-Kann B19

Austen Green 2229

Atulya Vaidya 2005

Texas Championship 2012 (1)

1.e4 c6 2.d4 d5 3.Nc3 dxe4 4.Nxe4 Bf5 5.Ng3 Bg6 6.Nf3 Nd7 7.h4 h6 8.h5 Bh7 9.Bd3 Bxd3 10.Qxd3 Ngf6 11.Bd2 e6 12.0-0-0 Qc7 13.Kb1 Bd6 14. Ne4 Nxe4 15.Qxe4 Nf6 16.Qe2 0-0-0 17.Ne5 Kb8 18.g3 Rhf8 19.Nc4 Ka8 20.Qf3 Be7 21.Bf4 Qd7 22.Be5 Qd5 23.Qd3 Ng4 24.Ne3 Nxe5 1/2-1/2

Sicilian Dragon B74

Francisco Guadalupe 2307

Mark Dejmek 2174

Texas Championship 2012 (1)

1.e4 c5 2.Nf3 d6 3.d4 cxd4 4. Nxd4 Nf6 5.Nc3 g6 6.Be2 Bg7 7.Be3 Nc6 8.0-0 0-0 9.Nb3 Be6 10.f4 Rc8 11.h3 a6 12.a3 b5 13. Qd2 Na5 14.Nxa5 Qxa5 15.Bf3 Nd7 16.Bd4 Bxd4+ 17.Qxd4 Qb6 18.Rad1 Qxd4+ 19.Rxd4 Nb6 20.f5 gxf5 21.exf5 Bxf5 22.Bb7 Rc5 23.Bxa6 Bxc2 24. Bxb5 Bb3 25.Re1 Nd5 26.Nxd5 Bxd5 27.Bd3 e5 28.Rg4+ Kh8

ROUND 1

French Tarrasch C04

Bayaraa Zorigt 2211

Julio Sadorra 2594

Texas Championship 2012 (1)

1.e4 e6 2.d4 d5 3.Nd2 Nc6 4. Ngf3 Nf6 5.e5 Nd7 6.c3 f6 7. exf6 Qxf6 8.Bb5 Bd6 9.Nf1 0-0 10.Bg5 Qg6 11.Bd3 Qh5 12.Qd2 e5 13.Ng3 Qf7 14.dxe5 Ndx5 15.Nxe5 Nxe5 16.0-0 Nxd3 17. Qxd3 b6 18.Rad1 Bb7 19.Rd2 Rae8 20.Re2 Rxe2 21.Qxe2 d4 22.c4 Qg6 23.Bd2 Re8 24.Qd1

Sicilian B30

James Canty 2215

Austin Jiang 2064

Texas Championship 2012 (1)

1.e4 c5 2.Nf3 Nc6 3.Bb5 e6 4.c4 Nge7 5.Nc3 a6 6.Ba4 d5 7.cxd5 exd5 8.exd5 Nxd5 9.Qe2+ Be6 10.Qe4 Be7 11.Ne5 Rc8 12. Nxc6 bxc6 13.0-0 0-0 14.Rd1

Bf6 15.Ne2 Qa5 16.Bb3 Rfe8
 17.d3 Nc3 18.Nxc3 Bxb3 19.
 axb3 Qxa1 20.Qc4 Bxc3 21.
 bxc3 Re2 22.h3 Rce8 23.Kh2
 Rc2 24.Qf4 Qxc3 25.Be3 Qxb3
 26.Qg4 Qe6 27.Qa4 Ra2 28.Qh4
 a5 29.Rc1 a4 30.Rc4 Qd6+ 31.
 Bf4 Qd5 32.Re4 Rxe4 33.dxe4
 Qd7 34.Qg5 Rxf2 35.Bg3 Re2
 36.Be5 f6 37.Bxf6 Rxe4 38.
 Bxg7 Qxg7 39.Qd8+ Qf8 40.
 Qg5+ Kh8 0-1

KID Saemisch E80

Daniel Ng 2061

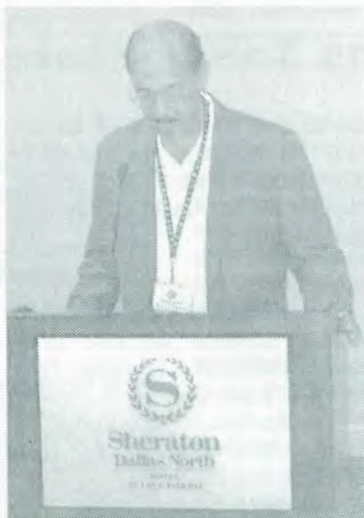
Alfred Carlin 2214

Texas Championship 2012 (1)

1.e4 c6 2.d4 g6 3.c4 Bg7 4.Nc3
 d6 5.Be3 Nf6 6.f3 Nbd7 7.Qd2
 e5 8.d5 c5 9.Nge2 h5 10.Nc1 a6
 11.a3 Qe7 12.b4 b6 13.Nb3 0-0
 14.Bd3 Qd8 15.h3 Nh7 16.g4 h4
 17.Kd1 Bf6 18.Kc2 Bg5 19.
 Bxg5 Qxg5 20.Ne2 Qxd2+ 21.
 Kxd2 g5 22.Rhb1 Rd8 23.Bc2
 Nhf8 24.bxc5 Nxc5 25.Nxc5
 bxc5 26.Rb6 Ng6 27.Rab1 Kf8
 28.Kc3 Ke7 29.Ba4 Ra7 30.Bc6
 Nf8 31.Nc1 Ng6 32.Nd3 Nf8
 33.R1b2 Nd7 34.R6b3 Nf8 35.
 Ne1 Ng6 36.Ng2 Rc7 37.Rb8
 Ra7 38.Kb3 Bd7



39.Ka4 Bxc6+ 40.dxc6 Rc7 41.
 R8b7 Rdc8 42.R2b6 Ke6 43.
 Rxc7 Rxc7 44.Rxa6 Ne7 45.Kb5
 Rc8 46.Ne3 Rb8+ 47.Rb6 Ra8
 48.Nd5!? [48.a4 Nc8 49.Rb7



Chief TD Franc Guadalupe

Na7+ 50.Kb6 Nc8+ 51.Kc7+--
 48...Rxa3 49.Nxe7 Kxe7 50.c7
 Kd7 51.Rxd6+ Kxc7 52.Rf6--
 Kd7 53.Rxf7+ Ke6 54.Rf5 Ra1
 55.Rxg5 Rh1 56.Kxc5 Rxh3 57.
 Rg6+ Kf7 58.Rh6 Rh1 59.Kd5
 h3 60.Kxe5 h2 61.f4 Kg7 62.g5
 1-0

QP Opening A46

Curran Han 2039

Dachev Lin 2175

Texas Championship 2012 (1)

1.Nf3 Nf6 2.d4 d6 3.Nbd2 Bf5
 4.b3 Nc6 5.a3 e5 6.Bb2 e4 7.
 Nh4 Be6 8.g3 d5 9.Ng2 Bd6
 10.e3 Bg4 11.Be2 Bh3 12.Nf4
 Bxf4 13.gxf4 h5 14.Rg1 Ng4 15.
 Rg3 Qh4 16.Nf1 Bxf1 17.Bxf1
 Qxh2 18.Qe2 Qh4 19.Rh3 Qf6
 20.Qxg4 hxg4 21.Rxh8+ Kd7
 22.Rxa8 Nd8 23.Rxa7 Qb6 24.
 Ra4 f5 25.Bc3 Qc6 26.Kd2 g5
 27.Ra5 Qe6 28.fxg5 c6 29.Ra8
 Qd6 30.Ba5 Ne6 31.Be2 Qh2
 32.Rf1 Nxc5 33.Rf8 Nf3+ 34.
 Bxf3 exf3 35.Rg8 Qg2 36.Ke1
 Qh2 37.Rg7+ Ke6 38.Bc7 Qh6
 39.Be5 c5 40.Rxb7 Qh4 41.
 Rb6+ Kd7 42.Rd6+ Kc8 43.

Rc6+ Kd7 44.Rxc5 f4 45.Rxd5+
 Ke7 46.Bxf4 Qh7 47.Rc5 Qh3
 48.Rc7+ Kd8 49.Rc6 Qh5 50.
 Rc5 Qh3 51.Rg5 Qh7 52.Kd2
 Qh3 53.Rg1 Ke7 54.R5xg4 Ke6
 55.R4g3 Qh5 56.Rg6+ Ke7 1-0

Caro-Kann B19

Dion Su 2032

Karthik Ramachandran 2165

Texas Championship 2012 (1)

1.e4 c6 2.d4 d5 3.Nc3 dxe4
 4.Nxe4 Bf5 5.Ng3 Bg6 6.h4 h6
 7.h5 Bh7 8.Nf3 Nd7 9.Bd3 Bxd3
 10.Qxd3 e6 11.Bf4 Qa5+ 12.Bd2
 Bb4 13.c3 Be7 14.c4 Qc7 15.
 0-0-0 Ngf6 16.Ne4 0-0-0 17.Nxf6
 Bxf6 18.Qe4 e5 19.Bc3 exd4
 20.Bxd4 Kb8 21.Rhe1 Bxd4 22.
 Nxd4 Nf6 23.Qf3 Qa5 24.Re7
 Qc5 25.Qb3 Nd7 26.Rxf7 Nb6
 27.Qg3+ Ka8 28.Qc7 Qxc4+ 29.
 Kb1 Rb8 30.Nf3 Nd5 31.Qe5
 Nc3+ 32.Qxc3 Qxf7 33.Ne5
 Qf5+ 34.Kc1 Qxf2 35.Rd4 Rhe8
 0-1

KID Classical E94

John Carr 2146

Anthony Guerra 2026

Texas Championship 2012 (1)

1.d4 Nf6 2.c4 g6 3.Nc3 Bg7 4.e4
 d6 5.Nf3 0-0 6.Be2 e5 7.0-0 Na6
 8.Be3 Ng4 9.Bg5 Qe8 10.h3 h6
 11.Bc1 exd4 12.Nxd4 Nf6 13.f3
 Nh5 14.Be3 Ng3 15.Re1 Nf5 16.
 Bf2 Nxd4 17.Bxd4 Bxd4+ 18.
 Qxd4 Qe5 19.Qe3 g5 20. Rad1
 Qg3 21.Bf1 Bxh3 22.Ne2 Qe5
 23.gxh3 Nb4 24.Rd2 Nxa2 25.
 Qa3 Qc5+ 26.Qxc5 dxc5 27.
 Red1 Nb4 28.Ng3 Nc6 29.Nf5
 Kh7 30.Kf2 Nd8 31.Rd7 Rc8
 32.Ne7 1-0

ROUND 2

Gruenfeld D85

Julio Sadorra 2594

John Carr 2146

Texas Championship 2012 (2)

1.Nf3 Nf6 2.c4 c5 3.Nc3 d5 4.
 cxd5 Nxd5 5.d4 g6 6.e4 Nxc3
 7.bxc3 Bg7 8.Be3 0-0 9.h3 Nc6
 10.Qd2 b6 11.d5 Na5 12.Rd1 e6
 13.Be2 f5 14.d6 fxe4 15.Ng5
 Bd7 16.0-0 Qf6 17.Nxe4 Qe5 18.
 Qd3 Bc6 19.Ng5 Bd5 20.Bg4
 Nc4 21.Bc1 Qxc3?? [21...Qf6=]
 22.Qxc3 Bxc3 23.Nxe6 1-0

Reti Opening A14

Brad Sawyer 2283
 Daniel Ng 2061

Texas Championship 2012 (2)

1.c4 Nf6 2.g3 e6 3.Bg2 d5 4.Nf3
 Be7 5.0-0 0-0 6.b3 Nbd7 7.Bb2
 b6 8.e3 Bb7 9.Qe2 dxc4 10.
 bxc4 Nc5 11.d4 Nce4 12.Ne5 c5
 13.Rd1 Qc7



14.d5 exd5 15.cxd5 Bxd5? [15...
 Rfd8 16.f3 Nd6 17. e4 b5±] 16.
 Rxd5 Nxd5 17.Bxe4 Rad8 18.
 Nd2 Bf6 19.f4 Ne7 20.Ndf3 Ng6
 21.Re1 Rfe8 22.Bc2 Qb7 23.
 Bb3 Re7 24.e4 Nxe5?? [24...
 Bxe5 25.Nxe5 Nxe5 26.Bxe5±]
 25.fxe5+- Rde8 26.Bd5 Qd7 27.
 exf6 Qxd5 28.fxe7 Qxa2 29.Ra1
 Qe6 30.Rxa7 Rxe7 31.Rxe7
 Qxe7 32.Qa6 h6 33.Qc8+ Kh7
 34.Qf5+ Kg8 35.Qe5 Qf8 36.Nh4
 Kh7 37.Nf5 f6 38.Qe7 1-0

Catalan Opening 09

Karthik Ramachandran 2165
 Francisco Guadalupe 2307

Texas Championship 2012 (2)

1.Nf3 d5 2.d4 Nf6 3.c4 e6 4.g3
 Be7 5.Bg2 0-0 6.Qc2 c6 7.Nbd2
 Nbd7 8.0-0 b6 9.e4 Bb7 10.e5
 Ne8 11.b3 Rc8 12.Bb2 c5 13.
 cxd5 exd5 14.dxc5 bxc5 15.
 Rfe1 Nc7 16.Rad1 Ne6 17.Nf1
 Nb6 18.Ne3 Re8 19.Nd2 Qc7 20.
 f4 c4 [20...d4 21.Nf5 Bxg2 22.
 Kxg2 Nd5 23.Ne4 Rcd8 24.Bc1=]



21.bxc4 [21.f5 c3 22.fxe6 fxe6
 23.Ba1 cxd2 24.Qxd2=] 21...d4
 22.Nf5 Bb4 [22...Bxg2 23.Kxg2
 Bb4 24.c5 Qc6+ 25.Qe4 Bxd2
 26.Qxc6 Rxc6 27.Rxd2 Nc4 28.
 Rc2±] 23.Bxb7 Qxb7 24.Nd6
 Bxd6 25.exd6 Red8 26.f5? [26.
 Qe4 Qxe4 27.Rxe4 g6 28.Bxd4
 Nxc4=] 26...Ng5 27.Re4? [27.h4
 Nxc4 28.d7 Qxd7 29.hxg5 Ne3
 30.Qe4 Nxd1 31.Rxd1 Qa4±]
 27...Nxe4 [27...Nxc4 28.Nxc4
 Rxc4 29.Qxc4 Qxe4-+] 28.Qxe4
 Qxe4 29.Nxe4 Nxc4 30.Bxd4
 Nxd6 0-1

Sicilian Alapin B27

Christopher Toolin 2249
 Curran Han 2039

Texas Championship 2012 (2)

1.e4 c5 2.c3 g6 3.Nf3 Bg7 4.d4
 cxd4 5.cxd4 d5 6.e5 Nc6 7.h3
 Bd7 8.Nc3 Qa5 9.Qb3 e6 10.
 Bd2 Qb4 11.Nb5 Qxb3 12.Nd6+
 Ke7 13.axb3 f6 14.Nxb7 fxe5
 15.dxe5 Nh6 16.Bg5+ Ke8 17.
 Nd6+ Kf8 18.Ba6 Nf7 19.Nxf7
 Kxf7 20.Bb7 Rab8 21.Bxc6

Bxc6 22.Rxa7+ Rb7 23.Rxb7+
 Bxb7 24.Kd2 Rc8 25.Ra1 Rc7
 26.Ra7 Rd7 27.Be3



White begins an interference
 maneuver to break the blockade.
 27...h6 28.Bc5 g5 29.b4 Kg6 30.
 Bd6 Rf7 31.Kc3 Rd7 32.Nd4 Kf7
 33.b5 h5 34.b6 Bh8 35.Bc7 Bc8
 36.Ra8 1-0

Sicilian C65

Andy Shao 2112
 Phillip Lamby 2185

Texas Championship 2012 (2)

1.e4 e5 2.Nf3 Nc6 3.Bb5 Nf6
 4.Bxc6 dxc6 5.0-0 Nxe4 6.Nxe5
 Be7 7.d3 Nd6 8.Nc3 0-0 9.Bf4 f6
 10.Nf3 Bg4 11.h3 Bh5 12.Re1
 Qd7 13.Qe2 Rae8 14.Qe6+
 Qxe6 15.Rxe6 Bxf3 16.gxf3 Bd8
 17.Rae1 Rxe6 18.Rxe6 Nf5
 19.Be3 Kf7 20.Re4 Be7 21.Ra4
 a6 22.Rf4 g6 23.Ne4 b6 24.Nc3
 Re8 25.Rc4 c5 26.Ra4 a5 27.
 Nd5 Bd8 28.Re4 c6 29.Nc3 Bc7
 30.a4 Re6 31.Ne2 Nd6 32.Rxe6
 Kxe6 33.Ng3 c4 34.Ne4 cxd3
 35.Nxd6 Bxd6 36.cxd3 b5 37.b3
 Kd5 38.Kf1 Bc5 39.Bd2 Bb6
 40.Ke2 Bc7 41.Be3 Be5 42.Kd2
 Bd4 43.Kc2 Kc5 44.Bd2 Kb6
 45.Be3 c5 46.Kd2 Kc6 47.Ke2
 Bc3 48.Bd2 Bxd2 49.Kxd2 bxa4
 50.bxa4 Kd5 51.Ke3 g5 52.Kd2
 Kd4 53.Ke2 Kc3 54.Ke3 f5 55.f4
 gxf4+ 56.Kxf4 Kxd3 57.Kxf5 c4
 58.f4 c3 59.Ke6 c2 60.f5 c1Q

61.f6 Qc7 62.h4 Ke4 63.h5 Kf4
64.f7 Qd8 65.h6 0-1

French Chigorin C00

Michael Langer 2247
Frank Brack 2004

Texas Championship 2012 (2)

1.e4 c5 2.Nf3 e6 3.d3 d5 4.Qe2
[4.Nbd2 is the KI Attack; the text
comes under the French Defense
with Chigorin's 2.Qe2.] 4...Be7
5.g3 Nc6 6.Bg2 Nf6 7.0-0 0-0
8.e5 Nd7 9.c4 Nb6 10.Rd1 f6 11.
exf6 Bxf6 12.Nc3 Nd4 13.Nxd4
cxd4 14.Nb5 a6 15.Na3 dxc4
16.dxc4 Qc7 17.Be4 Qf7 [17...
Bd7] 18.Bd2 Nd7 [18...d3!? 19.
Qxd3 (19.Qe3 Na4=) 19...Bxb2
20.Be3 Bxa1 21.Bxb6 Qf6
22.Bc5±] 19.Bb4 Re8 [△19...Rd8
20.Nc2 a5 21.Ba3 Nf8 22.f4±]
20.Nc2± a5 21.Ba3 e5??
[21...Kh8 22.Nxd4±] 22.Bd5 Re6
23.Bxe6 Qxe6 24.Nxd4 Qh3 25.
Bd6 Ra6 26.Nb5 b6 27.Qf3 h5
28.Qc6 Nc5 29.Nc7 Bb7 30.
Qe8+ Kh7 31.Nd5 Ne4 32.Bxe5
b5 33.Nf4 Qf5 34.Bxf6 Nxf6 35.
Qxb5 Qe4 36.Nd5 h4 37.Qxb7
Kh6 38.Qxa6 h3 39.Nf4 Kh7 40.
Nhx3 Qf3 41.Ng5+ 1-0

Reti Opening A13

Shaun Graham 2005
Austen Green 2229

Texas Championship 2012 (2)

1.c4 e6 2.g3 c6 3.Bg2 d5 4.Nf3
Nf6 5.b3 Bcd5 6.0-0 e5 7.cxd5 e4
8.Ne1 Bxc5 9.d4 Bb6 10.Ba3
Nc6 11.Nc2 Ne7 12.Nc3 0-0 13.
f3 exf3 14.exf3 [14.Rxf3 ΔBg4
(△14...Be6 15.Rxf6! gxf6 16.e3
Re8 17.Bxe7 Rxe7 18.Nb4=)
15.Rxf6! gxf6 16.Ne3±] 14...Re8±
15.Na4 Ba5 16.Bb4 Bxb4 17.
Nxb4 Bf5 18.Re1 Qa5 [18...Qd6
19.Qd2 Rac8±] 19.Nd3 Bxd3
20.Qxd3 Nc6 21.Red1 Re7 22.
Qd2 Qxd2 [22...Qc7±] 23.Rxd2
Rae8 24.Kf2= Kf8 25.Bf1 a6 26.
Rc1 Na7 27.Bh3 Nb5 28.Bf1

Nd6 29.Bd3 g5 [29...Nde4+ 30.
fxe4 dxe4 31.Kg1 exd3 32.Rxd3
Nd5±] 30.h3 h5 31.g4 hxg4 32.
hxg4



32...Nde4+! 33.Bxe4 dxe4 34.
Re2 exf3 35.Rxe7 Rxe7 36.Kxf3
Re4± 37.Rd1 [37.Rc8+ Kg7 38.
Rd8 Rf4+ 39.Ke2 Rxd4±] 37...
Rf4+ 38.Kg3 [38.Ke2 Nxd4 39.
Nc5 Rf2+ 40.Kd3 Rxa2 41.Rg1
Nf2+ 42.Ke3 g4+] 38...Ne4+ 39.
Kh2 Rxd4 40.d5 [40.Nc5 Nxc5
41.dxc5 Ke7±] 40...Nd6 41. Nb6
Re4 42.Nd7+ Ke7 43.Nc5 Re2+
44.Kh3 f5 45.Rc1 b6 46. Ne6
Ne4 Threatens mate in two start-
ing with ...g4+. 47.Nxd5 Nxd5+
48.Kh4 Ne4 49.Rc6 Rh2# 0-1

Reti Opening A10

Alfred Carlin 2214
Bo Githoro 2095

Texas Championship 2012 (2)

1.c4 e6 2.g3 d5 3.Bg2 c6 4.Qc2
f5 5.Nf3 Nf6 6.b3 Bd6 7.Bb2 0-0
8.d4 b5 9.Nbd2 Qe8 10.Ne5 Bb7
11.0-0 Nbd7 12.Nxd7 Qxd7 13.
Nf3 bxc4 14.bxc4 Ba6 15.c5
Bc7 16.Rfd1 Rab8 17.Bc3 Ne4
18.e3 g5 19.Ne5 Bxe5 20.dxe5
Nxc5 21.Bd4 Nb7 22.Bc5 Rf7
23.a4 Qc7 24.f4 Bc4 25.Bd4
gxf4 26.gxf4 Rg7 27.Kh1 Qf7
28.Rg1 Qh5 29.Bxa7 Ra8 30.
Bb6 Ra6 31.a5 c5 32.Qf2 Be2
33.Ra2 Bg4 34.e4 fxe4 35. Bxc5
Rxa5 36.Rxa5 Nxa5 37. Qa2 Bf3

38.Qxa5 Bxg2+ 39. Rxd2 Qd1+
40.Bg1 Rxd2 41.Qd8+ Kf7 42.
Qf6+ Kg8 43.Qxe6+ Kh8 44.
Qf6+ ½-½

QGD Baltic D06

Atulya Vaidya 2005
James Canty 2215

Texas Championship 2012 (2)

1.d4 d5 2.c4 Bf5 3.Nc3 e6 4.
cxd5 exd5 5.Nf3 Nc6 6.Bg5 f6
7.Bf4 Nge7 8.e3 a6 9.a3 Qd7
10.Rc1 b5 11.Be2 Na5 12.Nb1
c6 13.Bd3 Rc8 14.0-0 Ng6 15.
Bg3 Be7 16.Qc2 Bxd3 17.Qxd3
0-0 18.Nbd2 Nb7 19. Nb3 a5
20.Nc5 Nxc5 21.dxc5 Rfe8 22.
b4 axb4 23.axb4 Qg4 24.Qd4
Qf5 25.Ra1 Bf8 26.Qc3 h5 27.h3
Qe4 28.Nd2 Qe6 29.Nf3 f5 30.
Nd4 Qf6 31.Ne2 Be7 32.Qd3
Qg5 33.Nd4 Bf6 34.f4 Qxg3 35.
Rf3 Nxf4 36.exf4 Re1+ 37.Rxe1
Qxe1+ 38.Kh2 Bxd4 39.Qxd4
Qe4 40.Qc3 Rd8 41.Rg3 d4
42.Qb3+ Rd5 43.Qa2 h4 44.Rg6
Kh7 45.Rxc6 Qxf4+ 46.Kg1 Re5
47.Qf2 Qg5 48.Rd6 Qe7 49.
Rxd4 g5 50.Rd1 Qe6 51.Qd4
½-½

Sicilian Dragon B72

Bovey Liu 2053
Bayaraa Zorigt 2211

Texas Championship 2012 (2)

1.e4 c5 2.Nf3 d6 3.d4 cxd4 4.
Nxd4 Nf6 5.Nc3 g6 6.Bc4 Bg7
7.h3 Nc6 8.Be3 0-0 9.Bb3 Bd7
10.0-0 Rc8 11.f4 a6 12.Qd2 b5
13.a3 Na5 14.Rad1 Qc7 15.Ba2
Qb8 16.Nf3 Nc6 17.e5 Ne8 18.
Ng5 e6 19.Nge4 b4 20.Ne2 bxa3
21.bxa3 Qb2 22.Bb3 Qxa3 23.
Nxd6 Nxd6 24.Qxd6 Qxd6 25.
Rxd6 Nb8 26.c4 [26.Rfd1 Bb5
27.Nd4 Bc4 28.Kf2±] 26...Rc6
27.Rfd1 Rxd6 28.Rxd6 Rc8 29.
Ba7 Bf8 30.Rd1 Bc6 31.Ra1
Bb7 32.Ba4 Nc6= 33.Bf2 Nb4
34.Bb3 Nd3 35.Bd4 Bh6 36.g3
Bf8 37.Rd1 Nc5 38.Ba2 a5 39.

Rb1 a4 40.Kf1? [40.Rb5 a3 41. Nc3 Ba8 42.Kf2=] 40...Be4



41.Rb5 Bd3 42.Kf2 Ne4+ 43.Ke3 Bxe2 44.Kxe2 Nxc3+ 45.Kd3?? [45.Kf2 Rd8] 45...Nf5?? [45... Rd8] and White cannot save the bishop: 46.Kc3 Ne2+ 46.Kc3? [46.Bb6 Ra8] 46...Bh6+- The pawns start crumbling away. 47. Ra5 Rd8 48.Bb6 Rb8 49.c5 Bxf4 50.Bc7 Rc8 51.Bd6 Nxd6 52.exd6 Bxd6 53.Kb4 Be7 54. Bc4 a3 55.Kxa3 Bxc5+ 56.Kb3 Bd4 57.Ra2 Kg7 58.Rd2 e5 0-1

French Rubinstein C10

Mark Dejmek 2174
Leo Bonnell 2000

Texas Championship 2012 (2)

1.e4 e6 2.d4 d5 3.Nc3 dxe4 4. Nxe4 Bd7 5.Nf3 Bc6 6.Bd3 Nd7 7.Qe2 Ngf6 8.Neg5 Qe7 9.Bd2 h6 10.Ne4 Nxe4 11.Bxe4 Bxe4 12.Qxe4 c6 13.0-0-0 Nf6 14.Qe2 Qc7 15.Kb1 0-0-0 16.c4 g5 17.Bc3 Qf4 18.Rhe1 Bg7 19. Ne5 Nd7 20.d5 1/2-1/2

ROUND 3

KID Four Pawns E76

Phillip Lamby 2185
Julio Sadorra 2594

Texas Championship 2012 (3)

1.d4 Nf6 2.c4 d6 3.Nc3 g6 4.e4 Bg7 5.f4 0-0 6.Nf3 Na6 7.Bd3

Bg4 8.Be3 Nd7 9.Be2 e5 10. fxe5 dxe5 11.d5 f5 12.Ng5 f4 13.Bxg4 Qxg5 14.Bf2 Qe7 15. d6! [15.0-0] 15...cxd6 16. Qd5+ Kh8 17.Qxb7 Nac5 18. Bxc5 Qh4+ 19.Bf2 Qxg4 20. Bxa7 [20.Rg1 Rab8 21.Qxa7 Rxb2 22.h3 Qe6] 20...Qxg2 21. Rg1 Rxa7!+ 22.Qxa7 Qxb2 23. Nd1 Qxa1 24.Qxd7 Qd4 25.Rg2 f3 0-1

French Exchange C01

Francisco Guadalupe 2307
Christopher Toolin 2249

Texas Championship 2012 (3)

1.e4 e6 2.d4 d5 3.exd5 exd5 4.Bd3 Nf6 5.Bg5 Be7 6.Nf3 0-0 7.0-0 Bg4 8.Re1 Nbd7 9.c3 c5 10.Nbd2 Re8 11.Qb1 h6 12.Bh4 Qb6 13.h3 Be6 14.dxc5 Bxc5 15.Nb3 Bd6 16.Nbd4 g5 17.Bg3 Bxg3 18.fxc3 Nh5 19.Bf5 Kg7 20.g4 Ng3 21.Qc2 Bxf5 1/2-1/2

Nimzo-Indian E50

Bayaraa Zorigt 2211
Daniel Ng 2065

Texas Championship 2012 (3)

1.Nf3 Nf6 2.d4 e6 3.c4 Bb4+ 4.Nc3 c5 5.e3 0-0 6.Bd3 cxd4 7.exd4 d5 8.0-0 a6 9.a3 Bxc3 10.bxc3 dxc4 11.Bxc4 Qc7 12.Qd3 b5 13.Bb3 Bb7 14.Bg5 Nbd7 15.Rfc1 Be4 16.Qe3 Qb7 17.Ne1 Rac8 18.Qg3 Kh8 19. Nd3 Nd5 20.Bd2 Rc7 21.Nf4 N7b6 22.Nh5 Bg6 23.Nf4 Bf5 24.Nd3 Nd7 25.a4 Rfc8 26.Nf4 N7f6 27.Nxd5 Nxd5 28.axb5 axb5 29.Qf3 h6 30.h3 Nf6 31. Qe2 Ne4 32.Qe3 Nxd2 33.Qxd2 Be4 34.f3 Bd5 35.Rab1 Bxb3 36.Rxb3 Qd5 37.Rcb1 Rb7 38. Qd3 Rc4 39.Kf2 g6 40.R1b2 Kg7 41.Qe3 h5 42.Qf4 Rb6 43. g4 g5 44.Qe3 h4 45.f4 f6 46. fxg5 fxg5 47.Kg1 Ra4 48.Rb1 Ra2 49.R3b2 Rba6 50.Qe5+ Qxe5 51.dxe5 Rxb2 52.Rxb2 Ra3 53.Rxb5 Rxc3 54.Kg2 Rc2+

55.Kg1 Rc1+ 56.Kf2 Rc2+ 57. Kg1 Rc1+ 1/2-1/2

Sicilian Najdorf B99

Austen Green 2229
Michael Langer 2238

Texas Championship 2012 (3)

1.e4 c5 2.Nf3 d6 3.d4 cxd4 4.Nxd4 Nf6 5.Nc3 a6 6.Bg5 e6 7.f4 Be7 8.Qf3 Qc7 9.0-0-0 Nbd7 10.Bd3 h6 11.Bh4 g5 12.e5 gxh4 13.exf6 Nxf6 14.f5 e5 15.Nb3 Bd7 16.Ne4 Bc6 17. Nxf6+ Bxf6 18.Be4 0-0-0 19.Bd5 e4 20.Qxe4 Rhe8 21.Qc4 Bxd5 22.Qxd5 Re2 23.Nd2 Rg8 24.g3 hxg3 25.hxg3 Rxc3 26.Rhe1 Rgg2 27.Rxe2 Rxe2 28.Qd3 Rh2 29.c3 Bg5 30.Kb1



30...Bxd2 31.Rxd2 Qc5 [31...Rxd2 32.Qxd2 Qc4] 32.Rxh2? [32.Qxd6 Rh1+ 33.Kc2 Qxf5+ 34.Rd3 Qg5 35.Qf8+ Kc7 36.Qxf7+=] 32...Qg1+ 33.Kc2 Qxh2+ 34.Kb3 Qh5 35.Qd5 Kc7 36.Qc4+ Kb8 37.Qd5 Ka8 38.a4 f6 39.Qxd6 Qxf5 40.Qf8+ Ka7 41.Qxh6 Qd5+ 42.Kc2 Qe4+ 43. Kb3 f5 44.Qd6 f4 45.a5 Qe3 46. Qf6 f3 47.Kb4 f2 48.b3 Qd2 49. Kc5 f1N 50.Qxf1 Qxc3+ 51.Qc4 Qxa5+ 52.Kd6 Qd8+ 53.Ke5 Kb6 54.Qb4+ Ka7 55.Qc4 Qd7 56.b4 Qe7+ 57.Kf5 Kb6 58.Kg4 Qe5 59.Kf3 Qf6+ 60.Ke3 Qc6 61.Kd4 Qxc4+ 62.Kxc4 Kc6 63. b5+ axb5+ 64.Kb4 Kb6 0-1

ROUND 4

QGD Exchange D36

Julio Sadorra 2594

Francisco Guadalupe 2307

Texas Championship 2012 (4)

1.d4 d5 2.c4 e6 3.Nc3 Nf6 4.
cxd5 exd5 5.Bg5 Be7 6.e3 0-0
7.Bd3 c6 8.Qc2 Nbd7 9.Nf3 Re8
10.0-0 Nf8 11.h3 Ne4 12.Bxe7
Qxe7 13.Bxe4 dxe4 14.Nd2 f5
15.Rae1 Be6 16.f3 exf3 17.Nxf3
Rad8 18.e4 Qd7 [18...fxe4 19.
Nxe4 Bd5 20.Nc3 Ne6 21.Nxd5
Rxd5=] 19.d5 cxd5 20.Ne5 Qc7
21.exf5 d4 [21...Bc8 22.Nf3 Rxe1
23.Rxe1 Qc5+ (23...d4 24.Qb3+
Qf7 25.Qxf7+ Kxf7 26.Nb5=)
24.Kh1 b5=] 22.fxe6 dxc3 23.
Kh1 Rxe6



24.Qb3 cxb2?? [24...c2 25.Nf3
(25.Rxf8+ Kxf8-) 25...Kh8 26.
Rc1=] 25.Rxf8+ Rxf8 26.Qxe6+
Kh8 27.Nf7+ Kg8 28.Ng5+ Kh8
29.Qe4 g6 30.Qd4+ 1-0

English Opening A29

Brad Sawyer 2283

Michael Langer 2238

Texas Championship 2012 (4)

1.c4 e5 2.g3 Nf6 3.Bg2 d5 4.
cxd5 Nxd5 5.Nc3 Nb6 6.Nf3
Nc6 7.0-0 Be7 8.d3 0-0 9.Be3
Be6 10.Qc1 Qc8 11.Rd1 Nd5
12.Bd2 Rd8 13.Ng5 Bxg5 14.
Bxg5 f6 15.Nxd5 Bxd5 16.Be3

Qe6 17.Bxd5 Qxd5 18.Qc3
Rac8 19.Qa3 Nd4 20.Bxd4 exd4
21.Rac1 1/2-1/2

Sicilian Alapin B22

Christopher Toolin 2249

Ruifeng Li 2169

Texas Championship 2012 (4)

1.e4 c5 2.c3 Nf6 3.e5 Nd5 4.d4
cxd4 5.Nf3 Nc6 6.cxd4 d6 7.Nc3
Nxc3 8.bxc3 g6 9.Bf4 d5 10.Be2
Bg7 11.0-0 0-0 12.h3 b6 13.Qd2
Na5 14.Bh6 Bd7 15.Rfe1 Rc8
16.Ba6 Rc7 17.Rac1 Nc4 18.
Bxc4 Rxc4 19.Qg5 e6 20.Qf4 f5
21.exf6 Qxf6 22.Qe3 Rc7 23.
Bxg7 Kxg7 24.Ne5 Bc8 25.Qg3
Qf4 26.Qxf4 Rxf4



27.g3 Rf8 28.f4 h6 29.h4 Rf5
30.Kg2 h5 31. Re3 Rf8 32.Kf3
Kf6 33.Rg1 Rg7 34.g4 Rh8 35.
Ke2 Bd7 36.Reg3 Be8 37.Ke3
hxg4 38.Rxg4 Rh6 39.c4 Rc7
40.cxd5 exd5 41.Rg5 Rxh4 42.
Ng4+ Ke7 43.Re5+ Kf8 44.Rxd5
Bf7 45.Rd8+ Ke7 46.Rb8 Rh3+
47.Ke4 Rc2 48.Re1 Kd6 1/2-1/2

Caro-Kann B12

Mark Dejmek 2174

Atulya Vaidya 2029

Texas Championship 2012 (4)

1.e4 c6 2.d4 d5 3.e5 Bf5 4.Nc3
e6 5.g4 Bg6 6.Nge2 Ne7 7.f4 h5
8.f5 exf5 9.g5 Na6 10.Be3 Nc7
11.Qd2 Ne6 12.0-0-0 Qc7 13.h4
0-0-0 14.Nf4 b6 15.Bg2 Kb7 16.

Kb1 a6 17.Bf3 Nc8 18.Nce2 b5
19.Nxe6 fxe6 20.Nf4 Qf7 21.
Rdg1 Nb6 22.b3 Be7 23.Ka1
1/2-1/2

French Chigorin C00

Anthony Guerra 2026

Leo Bonnell 2000

Texas Championship 2012 (4)

1.e4 e6 2.d3 d5 3.Qe2 Nf6 4.Nf3
c5 5.g3 Nc6 6.Bg2 Be7 7.0-0 b6
8.Bf4 Ba6 9.e5 Nd7 10.c4 Nb4
11.Rd1 Bb7 12.a3 Na6 13.Nc3
Nc7 14.h4 h6 15.h5 Nf8 16.Qd2
Qd7 17.Ne1 0-0-0 18.Nc2 dxc4
19.Bxb7+ Kxb7 20.dxc4 Qxd2
21.Rxd2 Rxd2 22.Bxd2 Nd7
23.Re1 Rd8 24. Bf4 Nb8 25.Rd1
Rxd1+ 26.Nxd1 Nc6 1/2-1/2

KID Fianchetto E61

Dachey Lin 2188

John Montgomery 2170

Texas Championship 2012 (4)

1.d4 Nf6 2.c4 g6 3.Nc3 Bg7
4.Nf3 d6 5.Bf4 0-0 6.h3 c5 7.d5
Qa5 8.Qd2 a6 9.e4 b5 10.Bd3
Nbd7 11.0-0 Nb6 12.e5 Ne8 13.
b3 bxc4 14.bxc4 dxe5 15. Bxe5
f6 16.Bg3 e5 17.dxe6 Bxe6 18.
Qe2 Bf7 19.Rac1 Bh6 20.Rc2
Ng7 21.Ne4 Nh5 22.Nd6 Nxc3
23.fxc3 Ra7 24.Nh4 Nc8 25.
Nxf7 Raxf7 26.Qg4 Ne7 27.Nf5
Nxf5 28.Bxf5 Kg7 29.Kh2 Be3
30.Re2 Bd4 31.Be6 Re7 32.Bd5
Qc7 33.Rxe7+ Qxe7 34.Rb1
Qe3 35.Qd7+ Kh8 36. Qg4 Re8
37.Bc6 Rf8 38.Bd5 Re8 39.Bc6
1/2-1/2

ROUND 5

Pirc Defense B07

Michael Langer 2247

Julio Sadorra 2594

Texas Championship 2012 (5)

1.e4 d6 2.d4 Nf6 3.Nc3 e5 4.
Nge2 Be7 5.f3 0-0 6.Be3 c6
7.Qd2 b5 8.g4 b4 9.Nd1 exd4
10.Nxd4 d5 11.e5 Nfd7 12.f4

Bh4+ 13.Bf2 Nc5 14.Nf5 Bxf5
15.gxf5 Ne4 16.Qe3 Nd7 17.Bg2
Nxf2 18.Nxf2



18...Qb6 19.Qd2 Qb5 20.Qe2 a6
21.Rd1 Nc5 22.b3 Qxe2+ 23.
Kxe2 Bxf2 24.Kxf2 a5 25.Ke3
a4 26.Rd2 Ra5 27.Bf3 f6 28.e6
Nb7 29.Be2 Nd6 30.Bd3 Re8 31.
Kd4 Rd8 32.Rg2 c5+ 33.Ke3
axb3 34.axb3 c4 35.bxc4 dxc4
36.Be4 Nxf5+ 37.Bxf5 Rxf5 38.
Ra1 Rfd5 39.Ra4 Rb8 40.Rd2
Rxd2 41.Kxd2 b3 42.Kc1 bxc2
43.Rxc4 Re8 44.Rc6 Kf8 45.
Kxc2 Ke7 46.Kd3 Rd8+ 47.Ke3
f5 48.Rc7+ Kf6 49.Rf7+ Kg6 50.
Re7 Kf6 51.Rf7+ Kg6 52.Re7
Rg8 53.Ra7 Re8 54.e7 Kf6 55.
Kf3 Rxe7 56. Ra6+ Re6 57.Ra7
Rb6 58.Rc7 Rb3+ 59.Kg2 Re3
60.Rc6+ Re6 61.Rc7 ½-½

Sicilian Four Knights B45

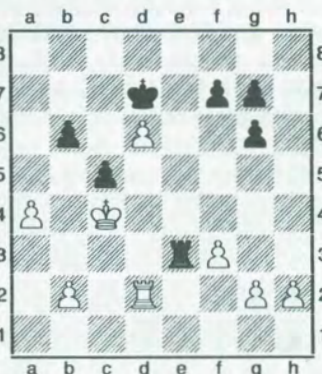
Francisco Guadalupe 2307

Austen Green 2229

Texas Championship 2012 (5)

1.e4 c5 2.Nf3 Nc6 3.d4 cxd4
4.Nxd4 Nf6 5.Nc3 e6 6.Ndb5
Bb4 7.a3 Bxc3+ 8.Nxc3 d5 9.
exd5 exd5 10.Bd3 0-0 11.0-0 d4
12.Ne2 Bg4 13.Bg5 Qd6 14.f3
Bh5 15.Qd2 Bg6 16.Bxg6 hxg6
17.Rad1 Rad8 18.Be3 Rfe8 19.
Bf2 d3 20.cxd3 Ne5 21.d4 Nc4
22.Qc2 Ne3 23.Bxe3 Rxe3 24.
Nc3 Nd5 25.Nxd5 Qxd5 26.Rd2
Rde8 27.Qc5 Qb3 28.Qc1 R3e7

29.Qc3 Qb5 30.Qc5 Qb3 31.d5
Re5 32.Qd4 Qb5 33.a4 Qb6 34.
Qxb6 axb6 35.Kf2 Kf8 36.Rc1
Rd8 37.d6 Rc5 38.Rxc5 bxc5
39.Rd5 b6 40.Ke3 Ke8 41.Kd3
Kd7 42.Kc4 Re8 43.Rd2 Re3



44.b3 f5 45.h4 g5 46.hxg5 g6
47.Rd3 Re2 48.Kb5 Rb2 49.g3
Rb1 50.a5 bxa5 51.Kxc5 Ra1
52.Kc4 Ra3 53.Kc5? [53.Kd4
Ra2 (53...Kxd6 54.Kc3+ Kc5
55.Kb2+-; 53...Kd8 54.d7 a4
55.bxa4 Rxa4+ 56.Ke5 Ra6 57.f4
Rb6 58.g4 fxc4 59.f5+-) 54.
Ke5+-] 53...a4 54.Kb4 Rxb3+
55.Rxb3 axb3 56.Kxb3 Kxd6
57.Kc4 Ke5 58.Kc5 Ke6 59.Kc6
[59.Kd4 Kd6 60.f4 Ke6 61.Kc5
Ke7 62.Kd5 Kd7 63.Kc4 Kd6
64.Kd3 Ke6 65.Ke3 Kd5 66.Kf3
Kd6 67.g4 fxc4+ 68.Kxc4 Ke6
69.Kg3 Ke7 70.Kf3 Kd6 71.Ke4
Ke6=] 59...Ke5 60.Kc5 Ke6 61.
Kc6 Ke5 62.Kd7 f4= 63.gxf4+
Kxf4 64.Ke6 Kxc5 65.Ke5 Kh5
66.Kf6 ½-½

Philidor's Defense C41

Bayaraa Zorigt 2211

Dachey Lin 2188

Texas Championship 2012 (5)

1.e4 d6 2.d4 Nf6 3.Nc3 Nbd7
4.Nf3 e5 5.Be2 Be7 6.0-0 0-0
7.Re1 c6 8.h3 b5 9.a3 a6 10.Bf1
Re8 11.Qd3 Qc7 12.Ne2 d5 13.
exd4 14.exd5 c5 15.c3 Nb6 16.
cxd4 c4 17.Qc2 Nbx5 18.Nf5

Bxf5 19.Qxf5 Bd6 20.Bd2 Bf4
21.g3 Bxd2 22.Nxd2 c3 23.bxc3
Qxc3 24.Qd3 Rad8 25.Rec1
Qxd3 26.Bxd3 Nf4 27.Bf1 Ne6
28.Nb3 Nxd4 29.Nc5 Rd6 30.
Kg2 Nd7 31.Nb7 Rb6 32.Na5
Nb8 33.Rc7 Nbc6 34.Nxc6 Rxc6
35.Ra7 g6 36.a4 Ree6 37.axb5
axb5 38.Rd1 Rcd6 39.Rb7 Re5
40.Bxb5 Rxb5 ½-½

Sicilian Scheveninge nB82

John Montgomery 2170

Daniel Ng 2065

Texas Championship 2012 (5)

1.e4 c5 2.Nf3 e6 3.Nc3 a6 4.d4
cxd4 5.Nxd4 Qc7 6.Bd3 Nf6 7.f4
d6 8.Qf3 b5 9.0-0 Bb7 10.g3
Nbd7 11.Bd2 Be7 12.Rae1 0-0
13.g4 Nc5 14.g5 Nfd7 15.Nd1
d5 16.e5 Ne4 17.Be3 Bc5 18.c3
Bxd4 19.cxd4 Rfe8 [19...f5!]
20.Nf2 Nxf2 21.Qxf2 Qb6 22.f5
exf5 23.Qxf5 Nf8 24.Qxf7+ Kh8
25.Qh5 Ng6 26.Rf3 Bc8



27.Rf16 gxf6 28.Bxg6 Re7 29.
exf6 Bg4 30.Qxg4 Rc7 1-0

ROUND 6

French Winawer C18

Ruifeng Li 2169

Julio Sadorra 2594

Texas Championship 2012 (6)

1.e4 e6 2.d4 d5 3.Nc3 Bb4 4.e5
Ne7 5.a3 Bxc3+ 6.bxc3 c5 7.

Qg4 Qc7 8.Qxg7 Rg8 9.Qxh7
 cxd4 10.Ne2 dxc3 11.f4 Bd7
 12.Qd3 Nf5 13.g4 Rxg4 14.Bh3
 Rg6 15.Bxf5 exf5 16.Be3 Na6
 17.Kf2 0-0-0 18.Rag1 d4 19.
 Bxd4 Bc6 20.Rxg6 fxc6 21.Rg1
 Nc5 22.Qc4 Ne4+ 23.Ke3 Qh7
 24.Qe6+ Kb8 25.Qxg6 Qh3+ 26.
 Rg3 Qxh2 27.Rg2 Qh3+ 28.Rg3
 Qf1 29.Rg2 Nd2 30.Rf2 Nc4+
 31.Kd3 Qxf2 0-1

French Tarrasch C06

Michael Langer 2247

Christopher Toolin 2249

Texas Championship 2012 (6)

1.e4 e6 2.d4 d5 3.Nd2 Nf6 4.e5
 Nfd7 5.Bd3 c5 6.c3 Nc6 7.Ne2
 cxd4 8.cxd4 f6 9.Nf4 Nxd4
 10.Qh5+ Ke7 11.exf6+ Nxf6 12.
 Ng6+ hxg6 13.Qxh8 Kf7 14.Qh4
 e5 15.Nf3 Nxf3+ 16.gxf3 Bf5
 17.Bxf5 gxf5 18.Bg5 Qa5+ 19.
 Kf1 Be7 20.Rc1 Rd8 21.Rg1 d4
 22.Kg2 d3 23.Bxf6 gxf6 24.
 Qc4+ Qd5 25.Qxd5+ Rxd5 26.
 Rc7 Rb5 27.Rd1 e4 28.b3 Ke6



29.h4 Bd6 30.Rc4 Kd5 31.h5
 Bf4 32.Kh3 Rc5 33.fxe4+ fxe4
 34.Kg4 Rxc4 35.bxc4+ Ke5 36.
 Rb1 f5+ 37.Kh3 d2 38.Kg2 Kd4
 39.Rxb7 Bd6 40.Rb1 Kxc4 41.
 h6 Be5 42.h7 Kc3 43.Kh3 Kc2
 44.Rg1 d1Q 45.Rxd1 Kxd1 46.
 Kh4 f4 0-1

Reti Opening A14

Brad Sawyer 2283

Francisco Guadalupe 2307

Texas Championship 2012 (6)

1.c4 e6 2.g3 d5 3.Bg2 Nf6 4.Nf3
 Be7 5.0-0 0-0 6.b3 b6 7.e3 Bb7
 8.Qe2 c5 9.Bb2 Nbd7 10.d3 Qc7
 11.Nc3 a6 12.Rac1 Rac8 13.
 cxd5 exd5 14.d4 c4 15.a4 Rfe8
 16.Ne5 Bb4 17.Na2 a5 18.bxc4
 Ba6



19.Nxb4 axb4 20.Qd2 Nxe5 21.
 dxe5 dxc4 22.Qxb4 Nd7 23.f4
 Nc5 24.Rfd1 Qa7 25.Rc2 Nd3
 26.Qa3 Red8 27.Bd4 Rxd4 28.
 exd4 Rd8 29.Qc3 b5 30.axb5
 1-0

ROUND 7

QP Opening A35

Julio Sadorra 2594

Brad Sawyer 2283

Texas Championship 2012 (7)

1.Nf3 c5 2.c4 Nc6 3.Nc3 g6 4.e3
 Nf6 5.d4 cxd4 6.exd4 d5 [This
 reversed Tarrasch Defense to the
 QGD can come out of several
 openings.] 7.cxd5 Nxd5 8.Qb3
 e6 9.Bb5 Bg7 10.Bg5 Qb6 11.
 Qa3 f6 12.Nxd5 exd5 13.Bxc6+
 bxc6 14.0-0 Qc7?! This grants
 White an extra tempo over ...Qb7
 or ...Kb7. [14...Kf7 15.Rfe1 Bf8
 16.Qe3 fxc6 17.Qe8+ Kg7 18.

Re7+ Bxe7 19.Qxe7+ Kg8 20.
 Qe8+ , Drawn in Potkin-
 Nepomniachtch, 2012; 14...Qb7
 15.Bf4 Kf7 16.Rac1 Re8 17.Rc3
 Bg4 18.Rfc1 Bxf3 19.Rxf3 f5
 20.Rb3= Boschma-Faber, 2001]
 15.Bf4!± Qd7 [15...Qxf4 16.
 Rfe1+ Kf7 (16...Be6) 17.Re7+
 Kf8 18.Rae1 forcing mate] 16.
 Rfe1+ Kf7 17.Bd6 Bf8 [17...Re8
 18.Rxe8 Qxe8 19.Re1 Be6 20.
 Nd2 Qd7 21.Nb3 Re8 22.Bb4±]
 18.Bxf8 Rxf8 19.Rac1 Bb7 20.
 Qe3 Rae8 21.Qf4 Kg7 22.h4 h6
 23.Nd2 Rf7 24.Nb3 Rfe7 25.
 Rxe7+ Qxe7 26.Na5 Qb4 [26...
 g5 27.hxg5 fxc6 28.Qd2 Ba8±]
 27.Nxc6 Qxb2 [27...Qb6 28.Na5
 (28.Nxa7 Re7 29.Nc8 Bxc8 30.
 Rxc8 Qxb2 31.Rc7±) 28...Re7
 (28...Qxa5 29.Rc7+ Kg8 30.Rxb7
 Qe1+ 31.Kh2 Re7 32.Qb8+ Kf7
 33.Qxa7+-) 29.Nxb7 Qxb7 30.
 b3±]



28.Nd8! Re7 [28...Rxd8 29.Qc7+]
 29.Rc7! 1-0

French MacCutcheon C12

Phillip Lamby 2197

Christopher Toolin 2249

Texas Championship 2012 (7)

1.e4 e6 2.d4 d5 3.Nc3 Nf6 4.Bg5
 Bb4 5.e5 h6 6.Bc1 Ne4 7.Qg4
 g6 8.Nge2 c5 9.a3 cxd4 10.axb4
 dxc3 11.Nxc3 Nxc3 12.bxc3
 Qc7 13.Qg3 Bd7 14.h4 Nc6 15.
 Bf4 0-0-0 16.Be2 Kb8 17.0-0

Ne7 18.Ra3 Nf5 19.Qd3 a6 20.
Rfa1 Qb6 21.g4 Bb5 22.Qd1



22...g5 23.Bc1 Nxf4 24.Be3 d4
25.cxd4 Qc6 26.f3 Bxe2 27.
Qxe2 Qxf3 28.Qxf3 Nxf3+ 29.
Kf2 Nxd4 30.Bxd4 Rxd4 31.b5
Rc8 32.c3 Rf4+ 33.Ke3 axb5 34.
Ra8+ Kc7 35.Rxc8+ Kxc8 36.
Rh1 Rxc4 37.Rxh6 Kd7 38.Rh7
Rf4 39.Rg7 Rf5 40.Kd4 Kc6 41.
Rg8 Rf4+ 42.Ke3 Kd5 43.Rb8
Kxe5 44.Rxb7 f5 45.Rxb5+ Kf6
46.Rc5 Re4+ 47.Kf2 g4 48.Rc8
Kg5 49.c4 e5 50.c5 Rc4 51.c6
Kf4 52.c7 Rc2+ 53.Ke1 g3 54.
Kd1 Rc6 55.Ke2 e4 56.Kd2 e3+
57.Ke2 g2 58.Rd8 Rxc7 59.
Rd4+ 0-1

Sicilian Dragon B76

Ruifeng Li 2169

Bayaraa Zorigt 2211

Texas Championship 2012 (7)

1.e4 c5 2.Nf3 d6 3.d4 cxd4 4.
Nxd4 Nf6 5.Nc3 g6 6.Be3 Bg7
7.f3 0-0 8.Qd2 Nc6 9.0-0-0 d5
10.Kb1 Nxd4 11.e5 Nxf3 12.
gxf3 Nh5 13.Nxd5 Be6 14.f4
Bxd5 15.Qxd5 Qxd5 16.Rxd5
Bh6 17.Rd4 Rfd8 18.Bg2 Rxd4
19.Bxd4 Rd8 20.Bxa7 Bxf4
21.Bb6 Rd7 22.Bf3 Bxe5 23.
Rd1 Nf6 24.Rxd7 Nxd7 25.Ba7
f6 ½-½

Gioco Piano C55

James Cauty 2215

Francisco Guadalupe 2307

Texas Championship 2012 (7)

1.e4 e5 2.Nf3 Nc6 3.Bc4 Nf6
4.d3 Bc5 5.0-0 d6 6.h3 h6 7.c3
Bb6 8.a4 a6 9.Qe2 0-0 10.Be3
Bxe3 11.Qxe3 Nh5 12.Kh2 Nf4
13.Ng1 d5 14.exd5 Nxd5 15.Qf3
Be6 16.g3 Qd7 17.Nd2 f5 18.
Qe2 Rae8 19.Ngf3 Bf7 20.Nh4
g6 21.Rae1 Kg7 22.Qd1 Rd8 23.
Qc2 Nde7 [23...Nb6! puts more
pressure on de: 24.Rd1 g5 25.
Ng2 Bh5 26.f3 Bg6] 24.



24.Rd1 [24.Nhf3 Bxc4 25.Nxc4=]
24...g5 [24...Bxc4 25.Nxc4 b5 26.
axb5 axb5 27.Na3 Qd5] 25.
Nhf3 [25.Ng2=] 25...Bg6 [25...g4
26.Ng1 Nd5 27.Rfe1 gxh3 28.
Nxf3 Bh5 29.f3 f4 30.gxf4 Nxf4
31.Nxf4 Rxf4 32.Re4 Qf5 33.
Rg1+ Kh7] 26.Nb3 b5? [26...
Qd6 27.d4 f4 28.Qe2 e4 29.
Nfd2] 27.Nc5± Qd6 28.Ne6+
Kh8 29.Nxf8 Rxf8 30.Ba2 Bh5
31.Qe2? [31.Kg2±] 31...Qf6 32.
Qe3 [32.axb5 axb5 33.Bb1=]
32...f4 33.Qe4 [33.gxf4 Qxf4+
34.Qxf4 Rxf4 35.Nd2 Bxd1 36.
Rxd1 Rxf2+] 33...fxg3+-+ 34.
fxg3 Bxf3 35.Qe3 g4 36.hxg4 e4
37.d4 Qg5 38.Rde1 Kg7 39.
Qxg5+ hxg5 40.Kg1 bxa4 41.
Bb1 Rb8 42.Rf2 Rh8 43.Rh2
Rhx2 44.Kxh2 Bxg4 45.Bxe4 a3

46.bxa3 Kf6 47.Bd3 a5 48.Bc4
Bf5 49.Kg2 g4 50.Kf2 Nc8 51.
Bd5 N6e7 52.Bg2 Ng6 53.Re2
Nd6 54.Rb2 Bd7 55.Rb8 a4 56.
Bd5 Ne7 57.Ba2 Ne+ 58.Ke3
Nxf3 59.Rb7 Ngf5+ 60.Kf2 g3+
61.Kg1 Nh4 62.Bc4 Bh3 63.Be2
Nd5 64.Rb5 Nf4 65.Bd1 Bg2 0-1

Farewell (cont'd from p. 4)

I strongly believe that the culture of Winning is not what life is about. The Gubernator quote above was the germ of a screenplay for *Little Miss Sunshine*, a great family movie about people finding out what is more important than winning.

Lately I saw a Dos Equis beer commercial with black-and-white footage of The World's Most Interesting Man playing a high-stakes chess match in front of cameras, like some Mexican Korchnoi. It is one more sign of how chess has become part of our cultural mainstream – like the Magnus Carlsen interviews for *60 Minutes* and *The Colbert Report*; like the great book *Play Like A Girl!* by Jennifer Shahade – which I was too chicken to put in the school library because the back cover credits included her work *Chess Bitch!*

Life is stranger than anything we could make up.

My drawing wave has subsided. The chess wave has, too. However, the love of creating beauty and seeking truth never tarnish, whatever form they seek.

Cheers,
Selby Anderson

2012 Texas State Championship Final Standings

#	Name	Rating	Rd 1	Rd 2	Rd 3	Rd 4	Rd 5	Rd 6	Rd 7	Total
1	GM Julio C Sadorra	2594	W6	W19	W8	W9	D5	W3	W4	6.5
2	NM Christopher Toolin	2249	W7	W16	D9	D3	D4	W5	W8	5.5
3	Ruifeng Li	2169	W17	W14	D4	D2	W8	L1	D6	4.5
4	NM Bradley J Sawyer	2283	W22	W15	D3	D5	D2	W9	L1	4.5
5	FM Michael Langer	2247	H—	W21	W10	D4	D1	L2	W12	4.5
6	WFM Bayaraa Zorigt	2211	L1	W23	D15	W11	D12	W14	D3	4.5
7	John L Montgomery	2136	L2	D18	W20	D12	W15	D13	W14	4.5
8	Philipp Lamby	2185	W23	W11	L1	W19	L3	W10	L2	4.0
9	NM Francisco Guadalupe II	2307	W24	W26	D2	L1	D10	L4	W13	4.0
10	NM Austen Green	2229	D25	W20	L5	W14	D9	L8	W16	4.0
11	Andy Shao	2112	W28	L8	D16	L6	D27	W23	W17	4.0
12	NM Dachey Lin	2175	L16	D17	W22	D7	D6	W19	L5	3.5
13	NM James H Canty III	2215	L14	D25	W18	D15	W23	D7	L9	3.5
14	Austin Zhiy Jiang	2064	W13	L3	W21	L10	W26	L6	L7	3.0
15	Daniel J Ng	2061	W27	L4	D6	D13	L7	D18	D23	3.0
16	Curran Ray Han	2039	W12	L2	D11	D26	D19	D24	L10	3.0
17	Akshay Malhotra	2038	L3	D12	D24	D27	D25	W22	L11	3.0
18	Anthony Guerra	2026	L19	D7	L13	D28	W21	D15	D22	3.0
19	NM John B Carr	2146	W18	L1	W25	L8	D16	L12	H—	3.0
20	Shaun Graham	2005	H—	L10	L7	D22	W28	W25	U—	3.0
21	Frank Brack	2004	B—	L5	L14	L23	L18	X29	W25	3.0
22	Mbugua Bo Githoro	2095	L4	D27	L12	W20	D24	L17	D18	2.5
23	Bovey Liu	2053	L8	L6	W28	W21	L13	L11	D15	2.5
24	NM Mark W Dejmek	2174	L9	D28	D17	D25	D22	D16	U—	2.5
25	Atulya Vaidya	2005	D10	D13	L19	D24	D17	L20	L21	2.0
26	Karthik Ramachandran	2165	W29	L9	H—	D16	L14	U—	U—	2.0
27	NM Alfred Carlin	2214	L15	D22	H—	D17	D11	U—	U—	2.0
28	Leo W Bonnell	2000	L11	D24	L23	D18	L20	U—	U—	1.0
29	Dion Su	2032	L26	H—	H—	U—	U—	F21	U—	1.0

San Antonio City Championship

An expert from Houston, Matthew Michaelides, cleaned up with 5-0 at the San Antonio City Championship, held June 23-24 at the Hornbeak Building of the Medical Center. A sophomore at Columbia University, he defeated top-rated C.J. Arvind in the final round.

The city title went to Gregg Stanley, who finished with 4.5 for clear second place.

Five players were tied for third with 4: experts James Rohrbach, and Alok Kumar, and U2200 prize winners Dale Dike, Martin Gordon and Alfredo Garcia.

Jaime Estrada (3.5) was the clear U1800 winner. Usman Qureshi and Justin Daley both scored 3.0 to share U1600 and U1400/unrated prizes.

J.P. Hytlin directed a field of 60 players for the San Antonio Chess Club.

Sicilian B23

John Niven 1611

Ernesto Malazarte 2168

San Antonio Chp. 2012 (1)

1.e4 c5 2.Nc3 Nc6 3.f4 e5 4.Nf3 d6 5.Be2 Nf6 6.0-0 Be7 7.fxe5 dxe5 8.h3 0-0 9.d3 Nh5 10.Nd5 Ng3 11.Nxe7+ Qxe7 12.Rf2 Qd6 13.c3 b6 14.Nh2 Nxe2+ 15.Qxe2 Ba6 16.Rf3 Rad8 17.Rg3 Bxd3 18.Qg4 Qg6 19.Bg5 Rd6 20.Rd1 c4 21.Re3 f6 22.Bh4 Rfd8 23.Qxg6 hxg6 24.Rde1 b5 25.g4 g5 26.Bg3 Ne7 27.Nf3 Ng6 28.h4 gxh4 29.Nxh4 Nf4 30.Nf5 Ra6 31.a3 Kf7 32.Bxf4 exf4 33.Rf3 Re6 34.Rxf4 g5 35.Rf2 Rxe4 36.Rxe4 Bxe4 37.Nd4 a6 38.Re2 Re8 39.Kf2 Re5 40.Kg3 Bg6 41.Rxe5 fxe5 42.Nc6 Ke6 43.Kf3 Bc2 44.Nb8 Bd1+ 45.Kg3 a5 46.Nc6 Kd6 47.Nd8 Kd5 48.Nf7 Ke4 49.Nd6+ Kd3 50.

Nxb5 e4 51.Nd6 e3 52.Nf5 e2 53.Nd4 e1Q+

QGD D55

Matthew Michaelides 2164

Dang Nguyen 1592

San Antonio Chp. 2012 (1)

1.d4 Nf6 2.c4 e6 3.Nc3 d5 4.Bg5 Be7 5.e3 Nbd7 6.Rc1 0-0 7.Nf3 b6 8.cxd5 exd5 9.Bd3 Bb7 10.0-0 c5 11.h3 Re8 12.Bf4 Ne4 13.dxc5 Ndx5 14.Bb5 Rf8 15.Nd4 Rc8 16.f3 Nf6 17.b4 Ne6 18.Nxe6 fxe6 19.Qb3 a6 20.Bd3 Bd6 21.Ne2 Nh5 22.Rxc8 Bxc8 23.Bxd6 Qxd6 24.Rc1 Ng3 25.Qc3 Nxe2+ 26.Bxe2 Qg3 27.Qd4 Kh8 28.f4 e5 29.Qxe5 Bxh3 30.Bf3 Rd8 31.Rc6



31...Qe1+ 32. Kh2 Bd7 33.Qg5 Re8 34.Rc7 1-0

Ruy Lopez C65

Dale Dike 1867

David Pacheco 1490

San Antonio Chp. 2012 (1)

1.e4 e5 2.Nf3 Nc6 3.Bb5 Nf6 4.Qe2 d6 5.h3 Be7 6.c3 Bd7 7.0-0 a6 8.Ba4 0-0 9.d4 exd4 10.Bc2 Ne5 11.Re1 Bb5 12.Qd1 d3 13.Bb3 Nfd7 14.a4 Nxf3+ 15.Qxf3 Ne5 16.Qd1 Bd7 17.f4 Ng6 18.Qxd3 Be6 19.c4 f5 20.Nc3 c5

21.Bc2 Qd7 22.Nd5 Bh4 23.Rf1 fxe4 24.Qxe4 Bxd5 25.Qxd5+ Kh8 26.Qh5 Bf6 27.Bxg6 Bd4+ 28.Kh1 h6 29.Bd2 Qe7 30.Rae1 Qf6 31.f5 Rae8 32.Bxh6 Kg8 33.Bg5 Rxe1 34.Qh7# 1-0

Bird's Opening A02

Nathan Ray Lozano 1477

Martin Gordon 1984

San Antonio Chp. 2012 (1)

1.f4 b6 2.Nf3 Nc6 3.g3 Bb7 4.Bg2 Nf6 5.0-0 e6 6.d3 Bc5+ 7.Kh1 d5 8.Nc3 0-0 9.e4 dxe4 10.dxe4 Qxd1 11.Rxd1 Ng4 12.Rf1 Nf2+ 13.Rxf2 Bxf2 14.Bd2 a6 15.Rf1 Bc5 16.a3 Nd4 17.Be3 Nxc2 18.Bxc5 bxc5 19.Rc1 Ne3 20.Ne2 Bxe4 21.Rxc5 Nxg2 22.Kxg2 Rfd8 23.Rxc7 Rd3 24.Neg1 Rd2+ 25.Kh3 Rxb2 0-1

Sicilian B31

Mark Harden 1973

Usman Qureshi 1474

San Antonio Chp. 2012 (1)

1.e4 c5 2.Nf3 Nc6 3.Bb5 g6 4.Bxc6 bxc6 5.0-0 Bg7 6.Re1 Nf6 7.e5 Nd5 8.c4 Nc7 9.Nc3 0-0 10.d4 cxd4 11.Nxd4 Ne6 12.Nxe6 fxe6 13.Qe2 d6 14.f4 dxe5 15.fxe5 Qd4+ 16.Kh1 Qxe5 17.Qxe5 Bxe5 18.Bh6 Bxc3 19.bxc3 Rf5 20.Rad1 Ra5 21.Rd8+ 1-0

Sicilian B92

Juan Carrizales 1699

Justin Daley 1113

San Antonio Chp. 2012 (1)

1.e4 c5 2.Nf3 d6 3.d4 cxd4 4.Nxd4 Nf6 5.Nc3 a6 6.Be2 e5 7.Nb3 Be6 8.Be3 b5 9.f3 Nbd7 10.Qd2 Be7 11.g4 h6 12.0-0-0 Nh7 13.f4 exf4 14.Bxf4 Ne5 15.h3 Nf6 16.Kb1 b4 17.Bxe5 dxe5 18.Qe3 Qb8 19.Nd5 Bd8 20.Rhf1 Nd7 21.Qf3 a5 22.Bc4 0-0

23.Ne3 Bxc4 24.Nxc4 Ra7 25.
Nd6 Bg5 26.Nf5 a4 27.Nc1 Nc5
28.h4 Bf4 29.g5 b3 30.cxb3 a3
31.gxh6 g6 32.Rg1 axb2 33.
Kxb2 Qb4 34.Ne3 Rc8 35.Qg4
Na4+, White resigns. [36.Kb1
Rxc1+ 37.Rxc1 Qxe4+ 38.Rc2
Nc3+-+] 0-1

QGD D32

Claudia Munoz 1873
Jim Rohrbaugh 2203

San Antonio Chp. 2012 (1)

1.d4 d5 2.c4 e6 3.Nc3 c5 4.e3
Nf6 5.dxc5 Bxc5 6.Nf3 0-0 7.
cxd5 exd5 8.Be2 Nc6 9.0-0 a6
10.b3 Re8 11.Bb2 Qd6 12.Rc1
Bg4 13.Qd2 Rad8 14.Nd4 Nxd4
15.exd4 Bxd4 16.Qxd4 Bxe2
17.Nxe2 Rxe2 18.Rfe1 Rxe1+
19.Rxe1 Re8 20.Rd1 Re2 21.h3
h6 22.a4 Qe6 23.Bc3 Qe4 24.
Kf1 Qc2 25.Be1 Ne4 26.Rd3
Qa2 27.Rd1 Rb2 28.b4 Rc2
29.a5 $\frac{1}{2}$ - $\frac{1}{2}$

Caro-Kann B13

Kelly Clover 1844
Matthew Michaelides 2164

San Antonio Chp. 2012 (2)

1.e4 c6 2.d4 d5 3.exd5 cxd5 4.
c4 Nf6 5.Nc3 Nc6 6.Bf4 e6 7.c5
Be7 8.Nf3 Ne4 9.Bb5 Nxc3
10.bxc3 Qa5 11.Qd3 Bd7 12.0-0
0-0 13.Ng5 Bxg5 14.Bxg5 Ne5
15.dxe5 Bxb5 16.Qg3 Kh8 17
.Rfd1 Qc7 18.Qh4 Qxe5 19.Rd4
f6 20.Bf4 Qf5 21.Bd6 Rfe8 22.
Re1 Bc6 23.Rf4 Qg6 24.h3 e5
25.Rg4 Qf7 26.Re3 Re6 27.
Reg3 g5 28.Qh6 Qg6 29.Qxg6
hxg6 30.h4 gxh4 31.Rxh4+ Kg7
32.Rgh3 f5 33.Rh7+ Kf6 34.Rc7
Rd8 35.Rhh7 Rdx6 36.cxd6
Rxd6 37.g3 Kg5 38.Rce7 d4
39.Rxe5 dxc3 40.f4+ Kg4
41.Re3 Bf3 42.Rxc3 Kxg3
43.Rxf3+ Kxf3 44.Rxb7 Rd1+
45.Kh2 Rd2+ 0-1

Sicilian B28

Alok Kumar 2018
Charles R. Davis 1743

San Antonio Chp. 2012 (2)

1.e4 a6 2.d4 e6 3.Nf3 d5 4.e5 c5
5.c3 Nc6 6.a4 c4 7.g3 Na5 8.
Nbd2 Bd7 9.b4 cxb3 10.Nxb3
Nc4 11.Bd3 b5 12.axb5 Bxb5
13.0-0 a5 14.Nbd2 Qc7 15.Nxc4
Bxc4 16.Qa4+ Qd7 17.Bxc4
dxc4 18.Nd2 Ne7 19.Nxc4 Nd5
20.Bd2 Be7 21.Qxd7+ Kxd7 22.
Nxa5 Rhb8 23.c4 Nb4 24.c5
Nc2 25.Rad1 Kc7 26.Bc3 Nb4
27.Nc4 Nd5 28.Bd2 Ra4 29.Ne3
Kc6 30.Nxd5 exd5 31.Be3 Bd8
32.Rb1 Rbb4 33.Rxb4 Rxb4
34.Ra1 1-0

Sicilian Dragon B76

Ethan Rodriguez 1698
Dale Dike 1987

San Antonio Chp. 2012 (2)

1.e4 c5 2.Nf3 d6 3.d4 cxd4 4.
Nxd4 Nf6 5.Nc3 g6 6.f3 Bg7
7.Be3 0-0 8.Qd2 Nc6 9.0-0-0
Bd7 10.g4 Rc8 11.h4 Ne5 12.h5
Nc4 13.Bxc4 Rxc4 14.Nb3 Qc7
15.Bh6 b5 16.Bxg7 Kxg7 17.
Kb1 Rxc3 18.bxc3 Be6 19.Qd4
Kg8 20.h6 Qc4 $\frac{1}{2}$ - $\frac{1}{2}$

Ruy Lopez C68

Martin Gordon 1984
Gary Zintgraff 1741

San Antonio Chp. 2012 (2)

1.e4 e5 2.Nf3 Nc6 3.Bb5 a6
4.Bxc6 dxc6 5.d4 Bg4 6.dxe5
Qxd1+ 7.Kxd1 Bc5 8.Ke2 0-0-0
9.Be3 Bd4 10.Bxd4 Rxd4 11.
Ke3 Rd7 12.Nbd2 f6 13.h3 Bh5
14.g4 Bf7 15.exf6 Nxf6 16.g5
Ne8 17.Ne5 Re7 18.Nxf7 Rxf7
19.f4 g6 20.Nc4 Rhf8 21.Raf1
Nd6 22.Ne5 Re7 23.b3 Nf7 24.
Ng4 Nd6 25.e5 Nf5+ 26.Kf2 Nd4
27.Nf6 Nxc2 28.Rd1 Nb4 29.
Rd2 Nd5 30.Kf3 Re6 31.Rhd1
h6 32.Nxd5 cxd5 33.gxh6 c6 34.
Rg2 Rxe5 35.Rxg6 Re7 36.Rg7

Rxg7 37.hxg7 Rg8 38.Rg1 Kd7
39.h4 Ke6 40.h5 1-0

French Defense C01

Sadia Qureshi 1691
Mark Harden 1973

San Antonio Chp. 2012 (2)

1.e4 e6 2.d4 d5 3.Nc3 Bb4 4.
exd5 exd5 5.a3 Ba5 6.Nf3 Ne7
7.Bf4 Bg4 8.Be2 0-0 9.0-0 Nbc6
10.Na4 Ng6 11.Bg3 Qf6 12.c3
Nf4 13.Bxf4 Qxf4 14.Ne5 Nxe5
15.dxe5 Bxe2 16.Qxe2 Qxa4
17.e6 Qe4 18.exf7+ Rxf7 19.
Qb5 Bb6 20.Rad1 c6 21.Qd3
Raf8 22.Qxe4 dxe4 23.Rd2 e3
24.Re2 Rxf2 25.Rxf2 Rxf2 26.
Re1 e2 0-1

English Opening A36

Eugene Kohnitz 1969
Chris Barthold 1706

San Antonio Chp. 2012 (2)

1.c4 c5 2.Nc3 Nf6 3.g3 g6 4.Bg2
Bg7 5.e4 d6 6.Nge2 Nc6 7.d3
0-0 8.f4 Bg4 9.h3 Bxe2 10.Nxe2
Qc7 11.g4 Nd7 12.f5 Nde5 13.
Nf4 Nb4 14.a3 Qa5 15.Bd2
Nexd3+ 16.Nxd3 Bxb2 [16...
Nxd3+ 17.Ke2 Qb6 18.Kxd3
Qxb2] 17.Nxb2 1-0

Dutch Defense A87

Randall Schwarz 1928
K.J. Furlong 1695

San Antonio Chp. 2012 (2)

1.d4 f5 2.g3 Nf6 3.Bg2 g6 4.Nf3
Bg7 5.c4 0-0 6.0-0 d6 7.Nc3
Qe8 8.d5 Na6 9.Rb1 c5 10.dxc6
bxc6 11.Nd4 Bb7 12.Ne6 Rf7
13.Nxg7 Kxg7 14.b4 Qd7 15.a3
Rd8 16.Be3 Ba8 17.Qa4 Bb7
18.Rfd1 Ng4 19.Bxa7 Ra8 20.
Bb6 e5 21.Qc2 Qe6 22.f3 Nf6
23.Bf2 Qxc4 24.Rxd6 Nd5 25.
Rc1 Nac7 26.Nxd5 Qxc2 27.
Rxc2 Nxd5 28.Bc5 Rxa3 29.Kf2
Rb3 30.f4 e4 31.Rd8 Nxb4 32.
Bd4+ Kh6 33.Bf1 Nxc2 0-1

King's Indian E61

Michael Lange 1349
John Niven 1611

San Antonio Chp. 2012 (2)

1.d4 Nf6 2.Nf3 g6 3.c4 Bg7 4.
Nc3 0-0 5.e3 d6 6.Bd3 Nc6 7.0-0
Re8 8.h3 e5 9.Ne4 exd4 10.
Nxf6+ Bxf6 11.Nxd4 Nxd4 12.
exd4 Bxd4 13.Bxg6 Bxf2+ 14.
Rxf2 hxg6 15.Re2 Be6 16.b3
Qf6 17.Bb2 Qg5 18.Qd4 Qc5 19.
Qxc5 dxc5 20.Rd1 Red8 21.
Red2 Rd7 1-0

Sicilian B84

Dang Nguyen 1592
Matthew Ortiz 1287

San Antonio Chp. 2012 (2)

1.e4 c5 2.Nf3 d6 3.d4 cxd4 4.
Nxd4 Nf6 5.Nc3 a6 6.Be2 e6 7.
0-0 Be7 8.Be3 Bd7 9.f4 e5 10.
Nb3 Nc6 11.Qd2 0-0 12.Kh1
Qc7 13.Rad1 Rad8 14.Qc1 b5
15.Bf3 Qc8 16.Rd3 Bg4 17.h3
Bxf3 18.Rxf3 b4 19.Nd5 Nxe4
20.Na5 Rfe8 [20...Bh4 21.Nxc6
Qxc6] 21.Bb6 Nxa5? [21...Rd7
22.Nxc6 Qxc6 23.Qe3 Nf6] 22.
Bxa5± Rd7 23.Nxe7+ [23.Nb6
Qc5 24.Nxd7 Qxa5 25.fxe5±]
23...Rdx7 24.Bxb4 Re6 [24...
exf4 25.Rxf4 Qc7 26.Rf1 Re6] 25.
Rde3? [25.Kh2] 25...exf4±
26.Rd3 Nc5 27.Rd1 Rg6?! 1-0



[27...Re3 Δ 28.Rxf4 Rxb3+ 29.
gxf3 (Δ29.Kg1 Rhe3) 29...

Qxh3+ 30.Kg1 Re2+] 28.Bxc5
dxc5 29.Qxf4= Rf6 30.Qg3 Rxf3
31.Qxf3 Qb8 32.Rf1 Rf8 [32...
Qc7] 33.b3 Qe5 34.Qf5 Qc3
35.Qd3 Qa5 36.a4 Rc8? [36...
Re8 37.Qc4 Re7] 37.Qc4 Rc7
38.Qd5 g6 39.b4 Qb6 40.bxc5
Qxc5 41.Qxc5 Rxc5 42.Rc1 Rc4
43.Kg1 Rxa4 44.c4 Kf8 45.Kf2
Ke7 46.Ke3 Kd6 47.Kd4 Ra2
48.Rf1 f5 49.Rb1 Kc6 50.Re1



50...Rd2+ 51.Kc3 Rd7 [51...
Rxx2-] 52.Re6+ Kb7 53.c5 Rc7
54.Kc4 Rg7 55.Kd5 Rd7+ 56.
Kc4 Rc7 57.Kd5 Ka7 58.Rc6
Rb7 59.Rd6 a5 60.c6 Rb2 61.
Rd7+ Kb6?? [61...Ka6=] 62.
Rb7+ 1-0

English Opening A22

Gary Cobb 1532
Ahn Nguyen 1180

San Antonio Chp. 2012 (2)

1.c4 e5 2.Nc3 Nf6 3.g3 d5 4.
cxd5 Nxd5 5.Qc2 Nc6 6.Bg2
Be6 7.a3 Be7 8.e3 0-0 9.Nge2
Qd7 10.0-0 Nf6 11.b4 Bh3 12.f4
Bf5 13.Bxc6 Bxc2 14.Bxd7
Nxd7 15.Bb2 exf4 16.exf4 Rfe8
17.Nd5 Bd6 18.Rac1 Bd3 19.
Rxc7 Bxc7 20.Nxc7 Rxe2 21.
Nxa8 Rxd2 22.Bc1 Rc2 23.Rd1
Bf5 24.Be3 Rc8 25.Rd5 Be6
26.Ra5 Rxa8 27.Rxa7 Rxa7 28.
Bxa7 Kf8 29.Kf2 Ke7 30.Ke3
Kd6 31.Kd4 Kc6 32.Bc5 Nxc5
33.bxc5 b6 34.cxb6 Kxb6 35.

Ke5 Ka5 36.f5 Bb3 37.g4 Ka4
38.h4 Kxa3 39.g5 Kb4 40.Kd6
Kc4 41.Ke7 Kd4 42.f6 g6 43.Kf8
Ke5 44.Kg7 Kf5 45.Kxh7 Kg4
0-1

Sicilian B40

Satvik Amerinini 680
Nathan Ray Lozano 1477

San Antonio Chp. 2012 (2)

1.e4 e6 2.Nf3 d5 3.d3 c5 4.Ne5
Qb6 5.Ng4 Qd8 6.Qf3 Nd7
7.exd5 exd5 8.Qxd5 Qe7+ 9.
Be3 Ngf6 10.Qf3 Nxx4 11.Qxx4
Nf6 12.Qh4 Qe5 13.c3 Ng4
14.d4 cxd4 15.cxd4 Qe6 16.Nc3
Nxe3 17.fxe3 Qxe3+ 18.Be2
Be7 19.Qe4 Qxe4 20.Nxe4 0-0
21.Bc4 Re8 22.0-0 Be6 23.d5
Bd7 24.d6 Bf6 25.Nxf6+ gxf6
26.Rxf6 Be6 27.Rc1 Rad8 28.
Bb5 Bd7 29.Bc4 Be6 30.Bxe6
Rxe6 31.Rxe6 fxe6 32.Rd1 Kf7
33.g4 e5 34.Rd5 Ke6 35.Rd3 e4
36.Re3 Ke5 37.Kg2 Kf4 38.Kf2
Rxd6 39.h3 Rd2+ 40.Re2 e3+
41.Ke1 Rd6 42.Rc2 Kf3 43.g5
e2 [43...Rg6 44.h4 h6 45.Rc5]
44.Rxe2 Rd7 45.h4 Rg7 46.Re5
Kg4 47.Re4+ Kh5 48.Rb4 h6
49.a4 a5 50.Rb5 hxg5 51.hxx5
Rxx5 52.Rxx5+ Kxx5 1-0

Sicilian B30

Mark Harden 1973
Ernesto Malazarte 2168

San Antonio Chp. 2012 (3)

[Harden] 1.e4 c5 2.Nf3 Nc6 3.
Bb5 Qb6 4.Nc3 e6 [4...Nd4 5.a4
e6 (5... Nxb5 6.axb5±) 6.0-0 Ne7
7.a5! Qc7 8.Nxd4 cxd4 9.Ne2
Qc5 10.Bd3 Nc6 11.c3] 5.0-0
a6?! [5...Nge7 6.Re1 Nd4 7.Bc4
Nec6 8.d3 d6 9.Nxd4 Nxd4
10.Rb1±] 6.Bxc6 Qxc6 7.d4
cxd4 8.Qxd4 [Better than
8.Nxd4 which just forces the mis-
placed Black Queen to her more
natural square c7. From d4 the
White Queen exerts pressure
down the d-file and against



J.P. Hyltin awards the championship trophy to Gregg Stanley

Black's kingside.] **8...d6 9.Bg5±** "A strong move, taking control of the dark squares f6, e7, d8" (Bo-logan) **9...b5 10.Rad1** [Sharper is 10.a4 hitting Black's overextended Queenside pawns. Black is horribly undeveloped.; 10.Ne5 Δdxe5 11.Qd8# but again 10...Qc7 gets the Black Q back on track and now 11...f6 threatens to win a piece.] **10...Bb7 11.Rfe1** Both rooks are destined to play key moves down the central files deep into enemy territory. **11...f6** Ugly, but the only way to untangle Black's kingside. **12.Be3 Be7**



13.Qb6? This throws away White's entire advantage. I misjudged the pressure I would be able to continue to exert on the backward d-pawn after the exchange of Queens. [I wanted to clear d4 for the N, but better is 13.Qd3 b4 14.Nd4 Qd7 15.Nce2+-] **13...Qxb6 14.Bxb6 Rc8= 15.a3** [15.Nd4 b4] **15...Nh6 16.Nd4 Kf7 17.f4 g6** [Δ17...e5 18.fxe5 dxe5 19.Nb3 Rc6 20.Be3 Ng4=] **18.e5 dxe5 19.fxe5 f5 20.Nce2 g5 21.c3 Bd8** [21...Ng4!# Δ 22...Ne3; also 21...Bd5#] **22.Bxd8 Rhxd8 23.Nf3 Kg6 24.h4 Bxf3** [24...g4?? 25.Ng5+- Δ 26.Nf4+; 24...gxh4? 25.Nf4+ Kf7 26.Ng5+±] **25.gxf3 g4?** [25...Nf7=] **26.Nf4+** [Even stronger is the immediate 26.Rd6! Rxd6 (26...Re8 27.Rd7! Δ28.Nf4#) 27.Nf4+ Kf7 28.exd6 reaching the game position without allowing Black options.] **26...Kf7 27.Rd6! gxf3?!** [Δ27...Re8 28.Rxa6±; the immediate 27...Rxd6 28.exd6 Rd8 gives Black more chances to slow the passed pawn, but still 29.Rxe6 Ng8 30.b3 Δ31.c4+-] **28.Nxe6+- Rxd6 29.exd6 Ng4 30.Ng5+ Kg8** [Δ30...Kg6 31.

Re6+ Kh5 32.Nxf3] **31.Re7!** The other rook makes its triumphant entry deep down the e-file. [Less precise, but still adequate, is 31.Nxf3 Rd8 32.Re6+-] **31...Rd8 32.Nf7 Ra8 33.Ng5** [Even worse would be 33.Rb7?? intending 34.d7: 33...Re8+-; Here, I had intended 33.d7?? but saw now that it fails to 33...Kf8#. Time to rewind with Ng5.] **33...Rd8 34.d7 Nf6**



[This allows a promotion/forking combination, but 34...Kf8 35.Rxh7 is hopeless for Black.] **35.Nxh7! Nxd7** [35...Rxd7 36.Nxf6+; 35...Nxb7 36.Re8+] **36.Rxd7 Rc8** [36...Rxd7 37.Nf6+] **37.Nf6+ Kf8** [37...Kh8 38.Rh7#] **38.h5 Rc6 39.Nd5 Rc4** [39...Rh6 40.Nf4] **40.h6 Rh4 41.h7 1-0**

Gruenfeld Defense D90

Matthew Michaelides 2164

Martin Gordon 1984

San Antonio Chp. 2012 (3)

1.d4 Nf6 2.c4 d5 3.cxd5 Nxd5 4.Nf3 g6 5.e4 Nf6 6.Nc3 Bg7 7.h3 0-0 8.Bc4 c6 9.0-0 b5 10.Bd3 b4 11.Na4 Ba6 12.Be3 Bxd3 13.Qxd3 a5 14.Rac1 Nfd7 15.Rfd1 h6 16.Qc2 [16.d5 cxd5 17.Qxd5 Ra6 18.Bf4 Qe8 19.Qb7 e5 20.Be3 Qe6 21.Qc7 (21.Rd5±) 21...Kh7±] **16...e6 17.Bf4 Qe7 18.Bxb8 Nxb8 19.e5 Ra6 20.Qe2 Rd8 21.h4 h5 22.Rc2 Bh6 23.b3 Rd5 24.g3 Qd8 25.Kh2**

Ra7 26.Qe4 Kg7 27.Rg1 Qc7
 28.g4 f5 [28...hxg4 29.Qxg4 Qe7
 30.h5 g5+- 31.Nb6 Rd8 32.d5!+-
 Δ ...exd5 33.Nc8] 29.gxf5 exf5
 30.Qxf5 Qf7 31.Qxh5 Qf4+ 32.
 Kh3 Qe4 33.Re2! Qd3 [33...
 Qxe2 34.Qxg6+ Kf8 35. Qxh6+
 Ke8 36.Rg8+ Kf7 37. Qh7+ Ke6
 38.Ng5#] 34.Nb2 Kh7 35.Qxh6+
 Kxh6 36.Nxd3 Rf7 37.Rg3 Rf8
 38.e6 Re8 39.Nf4 Rf5 40.Rxg6+
 Kh7 41.Ng5+ Kh8 42.Kg4 Rb5
 43.Nh5 Rxg5+ 44.Kxg5 c5 45.
 Nf6 cxd4 46.Nxe8 Nc6 47.Nf6
 Ne7 48.Rc2 Nxg6 49.Rc8+ Kg7
 50.Rg8# 1-0

Benoni A66

C.J. Arvind 2218
 Claudia Munoz 1873

San Antonio Chp. 2012 (3)

1.d4 Nf6 2.c4 e6 3.Nc3 c5 4.d5
 exd5 5.cxd5 d6 6.e4 g6 7.f4
 Nbd7 8.Nf3 Bg7 9.e5 dxe5 10.
 fxe5 Ng4 11.e6 fxe6 12.Ng5
 Ndf6 13.Bb5+ Ke7 14.0-0 Qb6
 15.d6+ Qxd6 16.Qxd6+ Kxd6
 17.Nf7+ Ke7 18.Nxh8 Bxh8 19.
 h3 Ne5 20.Be3 Ned7 21.Bg5 a6
 22.Bxd7 Bxd7 23.Ne4 Rf8 24.
 Nxf6 Bxf6 25.Rxf6 h6 26.Rxf8+
 Kxf8 27.Bxh6+ Ke7 28.Rf1 1-0

English Opening A21

James Rohrbaugh 2203
 Allen Eckert 1733

San Antonio Chp. 2012 (3)

1.c4 e5 2.Nc3 d6 3.Nf3 f5 4.d4
 e4 5.Ng5 c6 6.Nh3 Nf6 7.Bg5
 Be7 8.Nf4 0-0 9.e3 Na6 10.Be2
 Nc7 11.0-0 Kh8 12.Qb3 Qe8 13.
 Rac1 Qf7 14.f3 exf3 15.Bxf3
 Ne6 16.Nxe6 Bxe6 17.Bxf6 Bxf6
 18.d5 cxd5 19.Bxd5 Bxc3 20.
 Rxc3 Bxd5 21.cxd5 Qd7 22.Qc2
 Rac8? 23.Rxf5! Kg8 24.Rxf8+
 Rxf8 25.e4 Qb5 26.Rf3 Qb6+
 27.Qf2 Qd8 28.Rxf8+ Qxf8 29.
 Qxf8+ Kxf8 30.Kf2 Kf7 31. Ke3
 Kf6 32.Kd4 g6 33.g3 Ke7 34.e5
 dxe5+ 35.Kxe5 Kd7 36.d6 1-0

Pirc Defense B06

Ethan Rodriguez 1698
 Gregg Stanley 2133

San Antonio Chp. 2012 (3)

1.e4 g6 2.d4 Bg7 3.Nf3 d6 4.
 Nc3 Nc6 5.Be3 Bg4 6.Bc4 e5
 7.Bd5 Nxd4 8.Bxd4 exd4 9.Ne2
 c6 10.Bb3 Qa5+ 11.Nd2 Ne7 12.
 f3 Bd7 13.0-0 c5 14.Nc4 Qc7
 15.a4 0-0 16.c3 Nc6 17.Qd2 Be6
 18.Nf4 Rad8 19.Nd5 Qd7 20.a5
 Bxd5 21.exd5 Ne7 22.Na3 dxc3
 23.bxc3 b5 24.axb6 axb6 25.
 Bc4 Ra8 26.Nb5 Ra5 27.Rxa5
 bxa5 28.Re1 Rb8 29.Qe2 Kf8
 30.Ra1 Nxd5 31.Qd2 Nb6 32.
 Bf1 a4 33.Rb1 d5 34.Qf4 Rd8
 35.Rd1 Qe7 and Black won. 0-1

Caro-Kann B12

Duy Nguyen 1847
 Josito Dondon 2104

San Antonio Chp. 2012 (3)

1.e4 c6 2.d4 d5 3.e5 Bf5 4.Nf3
 e6 5.Be2 c5 6.Be3 Qb6 7.b3
 Nc6 8.c4?! [8.0-0] 8...dxc4 9.
 Bxc4 0-0-0 10. Nbd2 cxd4 11.
 Bf4 Bb4 12.a3 Bc3 13.Ra2 h6
 14.b4 g5 15.Bg3 Bg4 [15...
 Nge7+] 16.h3 Bf5 17.Bb3 Bd3
 18.Bc2 Ba6 19.Qb1 Qb5 20.Kd1
 Qe2+ [20...Nxe5 21.Bxe5 Qe2+
 22.Kc1 Bxd2+ 23.Nxd2 Qxe5-+]
 21.Kc1



21...Nge7? [Black seems to be in
 a "can't lose" frame of mind. Still

winning is 21...Nxe5 22.Rd1 Nxf3
 23.Nxf3 Ne7+] 22.Ne4 Kb8 23.
 Nd6 Rxd6 24. exd6 Nd5 25.Rd1
 Qc4 26.Bd3 Bb2+□ 27.Kd2
 Qc3+ 28.Ke2 Qb3? [□28...
 Qxd3+ 29.Qxd3 Nc3+ 30.Ke1
 Bxd3 31.Rxb2 Nxd1=] 29.
 Rxb2+- Nc3+ 30.Ke1 Qd5 31.
 Qc2 Nxd1 32.Kxd1 Bxd3 33.
 Qxd3 e5 [Even with best play
 Black's pawn center cannot over-
 come the piece deficit : 33...f5
 34. b5 Na5 35.Qc2! Ka8 36.Qc7
 Nc4 37.d7+-] 34.Qb3 Qxb3+ 35.
 Rxb3 f6 36.Nd2 f5 37.f3 Kc8
 38.Nc4 f4 39.Bf2 b5 40.Nd2 Kd7
 41.Ne4 Ke6 42.Rb2 a6 43.Rc2
 Kd7 44.Kd2 Ra8 45.Rc5 Rb8
 46.Kd3 Ra8 47.h4 a5 48.Rxb5
 axb4 49.axb4 Ke6 50.Be1 gxh4
 51.Rc5 Nd8 52.Ra5 Rb8 53.Ra6
 Nb7 54.Rb6 1-0

Queen's Gambit D11

Randall Schwarz 1928
 Stephan Gray 1640

San Antonio Chp. 2012 (3)

1.d4 d5 2.c4 dxc4 3.Nf3 c6 4.e3
 b5 5.a4 Bb7 6.b3 Nf6 7.bxc4
 bxc4 8.Bxc4 e6 9.0-0 a5 10.Ba3
 Be7 11.Nbd2 Na6 12.Bxe7 Qxe7
 13.Qe2 Nb4 14.Rfc1 h6 15.Nb3
 Nd7 16.Rab1 0-0 17.Qd2 Nb6
 18.Nxa5 Rxa5 19.Rxb4 Nxc4
 20.Rbxc4 Rfa8 21.Qd1 Qd6 22.
 Qb3 R5a7 23.Rb4 Ba6 24.Ne5
 Qd5 25.Rb8+ Kh7 26.Qxd5
 cxd5 27.Rxa8 Rxa8 28.Nxf7
 Bc4 29.Ra1 Rb8 30.a5 g6 31.g3
 Kg7 32.Ne5 Ba6 33.Nd7 Rb7 34.
 Nc5 Ra7 35.Nxe6+ Kf7 36. Nc5
 Ke7 37.Nxa6 Rxa6 38.f3 Kd6
 39.e4 dxe4 40.fxe4 g5 41.Kf2 h5
 42.Ke3 Kc6 43.Kd3 Kb5 44.e5
 Re6 45.a6 Rxa6 46.Rxa6 Kxa6
 47.e6 1-0

Caro-Kann B17

Gary Zintgraff 1741
 Michael Lange 1349

San Antonio Chp. 2012 (3)

1.d4 d5 2.e4 c6 3.Nc3 Nd7
 4.Bd3 dxe4 5.Nxe4 Ngf6 6.f3
 Nxe4 7.fxe4 e5 8.Nf3 exd4 9.0-0
 Bc5 10.e5 0-0 11.Bxh7+ Kh8
 12.Ng5 g6 13.Nxf7+ Rxf7 14.
 Rxf7 Nxe5 15.Bxg6 Qh4 16.
 Rh7+ Qxh7 17.Bxh7 Bg4 18.
 Qe1 Re8 19.Kh1 Kxh7 20.Qh4+
 Kg6 21.Qh6+ Kf5 22.Qg5+ Ke4
 23.Bf4 d3 24.Re1+ Be2 25.
 cxd3+ Nxd3 26.Rxe2+ Kd4 27.
 Rxe8 Kc4 28.Re4+ Kb5 29.Be3
 b6 30.Bxc5 bxc5 31.Qe3 c4
 32.Qxa7 Nc5 33.Re5 c3 34.
 Rxc5+ Kb4 35.Qa5# 1-0

Sicilian B23

Christopher Barthold 1706
 Justin Daley 1113

San Antonio Chp. 2012 (3)

1.e4 c5 2.f4 Nc6 3.Nf3 e6 4.Nc3
 Nge7 5.Bb5 a6 6.Bxc6 Nxc6
 7.d3 Be7 8.0-0 d6 9.a3 b5
 10.Be3 Bf6 11.d4 cxd4 12.Nxd4
 Qb6 13.Nce2 Bb7 14.Qd3 Qc7
 15.b4 0-0 16.Rad1



16...Ne5 17.fxe5 dxe5 18.Rxf6
 [There are some games one
 should not even try to annotate.]
 exd4 19.Bxd4 e5 20.Be3 Rad8
 21.Rd6 Rxd6 22.Qxd6 Qxc2 23.
 Bc5 Re8 24.Qd3 Bxe4 25.Qxc2
 Bxc2 26.Rd6 Ra8 27.Nc3 Bb3
 28.Kf2 g6 29.Ke3 Bc2 30.Nd5
 Kg7 31.Nc7 Rb8 32.Rxa6 f5 33.
 Bd6 Kh6 34.Bxe5 Kh5 35.Ne6
 Rb7 36.Nf4+ Kg4 37.h3+ Kh4

38.Kf2 Kg5 39.Kg3 Be4 40.Ne6+
 Kh5 41.Kf2 Rd7 42.Bf4 Bd5 43.
 Nc5 Re7 44.a4 Bc4 45.Be3 g5
 46.g3 Re8 47.axb5 Bxb5 48.Rb6
 Bc4 49.Nd7 Re6 50.Rxe6 Bxe6
 51.Nf6+ Kg6 52.Nxh7 Kxh7 53.
 Bxg5 Bd7 54.h4 Kg6 55.Kf3 Kf7
 56.Kf4 Ke6 57.g4 fxd4 58.Kxg4
 Bb5 59.Kf4 Be8 60.Bd8 Kd7 61.
 Bb6 Ke7 62.Kg5 Kf7 63.h5 Kg7
 64.h6+ Kh7 65.Bd4 Bb5 66.Bg7
 Bd3 67.Kf6 Kg8 68.Ke5 Kf7 69.
 Kd6 Ke8 70.Kc5 Kd8 71.Kc6
 Be4+ 72.Kb6 Kd7 73.b5 Kd6 74.
 Ka7 Ke6 75.b6 Kf7 76.b7 Bxb7
 77.Kxb7 Kg8 78. Kc7 Kf7 79.
 Kd7 Kg8 80.Ke7 Kh7 81.Kf6 1-0

Sicilian B21

Juan Carrizales 1699
 Mike Arocha 1235

San Antonio Chp. 2012 (3)

1.e4 c5 2.f4 e6 3.Nf3 Be7 4.Bc4
 Bh4+ 5.g3 Be7 6.0-0 a6 7.a4 b6
 8.d3 Bb7 9.f5 Nf6 10.fxe6 fxe6
 11.Nc3 d5 12.Ng5 dxc4 13.Nxe6
 Qd7 14.Nxg7+ Kd8 15.Qe2 cxd3
 16.cxd3 Qg4 17.Nf5 Qxe2 18.
 Nxe2 Nbd7 19.Nxe7 Kxe7 20.
 Bg5 Rhf8 21.Nf4 Kd6 22.Bh6
 Rg8 23.Ng2 Ke7 24.Rae1 Ne5
 25.Nh4 Nxd3 26.Re3 Rad8 27.
 Nf5+ Ke6 28.Ng7+ Ke5 29.Rf5+
 Kd4 30.Rxf6 Rxg7 31.Rxd3+
 Kxd3 32.Bxg7 Bxe4



This should be drawn, but one
 misstep gets White mated.

33.Rxb6 Ke3 34.Rb3+?? [34.
 Rf6=] 34...Ke2 Mate is forced.
 35.h4 Rd1+ 36.Kh2 Rh1# 0-1

Two Knights Defense C57

Matthew Ortiz 1287
 David Pacheco 1490

San Antonio Chp. 2012 (3)

[Hylltin, J. P.] 1.e4 e5 2.Nf3 Nc6
 3.Bc4 Nf6 4.Ng5 d5 5.exd5 Nd4
 6.d6 [6.c3 b5 7.Bf1 Nxd5 8.Ne4
 (8.cxd4 Qxg5 9.Bxb5+ Kd8
 10.Qf3) 8...Qh4 9.Ng3 Bg4
 (9...Nf5) 10.f3 e4 11.cxd4 Bd6]
 6...Qxd6 7.Nxf7 Qc6 8.d3 Qxg2
 9.Rf1 Bh3 10.Kd2 Bg4 11.Nxh8
 Bxd1 12.Rxd1 Qxf2+ 13.Kc3
 Qxc2# 0-1

Caro-Kann B19

Alok Kumar 2164
 Matthew Michaelides 2018

San Antonio Chp. 2012 (4)

1.e4 c6 2.d4 d5 3.Nc3 dxe4
 4.Nxe4 Bf5 5.Ng3 Bg6 6.h4 h6
 7.Nf3 Nd7 8.h5 Bh7 9.Bd3 Bxd3
 10.Qxd3 e6 11.Bd2 Ngf6 12.Ne4
 Nxe4 13.Qxe4 Nf6 14.Qe2 Qd5
 15.c4 Qe4 16.Qxe4 Nxe4 17.
 Be3 Be7 18.0-0-0 Bf6 19.g4 Rd8
 20.Rhe1 0-0 21.Rg1 [21.Ne5±
 Δc5 22.f4] 21...b5



A thematic thrust in the Caro-
 Kann. 22.g5 [22.b3 is also about
 equal.] 22...hxg5 23.Nxg5 Bxg5
 24.Bxg5 f6 25.Bh4? [This bishop
 should swallow its pride and go

on defensive duty to allow the rooks to get active: 25.Be3 bxc4 26.Rg6 Kh7 27.Rdg1=] 25...bxc4 26.Rg4 [26.Rge1 Nd6 27.Rxe6 Nf5 28.Bg3 Nxd4 29.Rd6 c5] 26...Nd6 27.f4 Nf5 28.Bf2 Kf7 29.Rg2 Rh8 30.Rh2 Rd5 31.Kc2 Nd6 32.Rdh1 Ne4 33.Be1 Rxd4 34.h6 Rxh6 35.Rxh6 gxh6 36.Rxh6 Kg7 37.Rh5 Kg6 38.Ra5 Rd7 39.Ra6 Kf5 40.Rxc6 Rd6 41.Rxd6 [41.Rxc4 Kxf4+] 41... Nxd6 42.Bf2 a6 43.Be3 Ke4 44. Bd2 Nb5 45.Kd1 Nd4 46.Kc1 Kd3 47.Kd1 e5 48.fxe5 fxe5 49. Bc3 e4 50.Ba5 e3 51.Bc3 Nf3 52.Kc1 e2 53.Ba5 e1Q+ 54.Bxe1 Nxe1 0-1

QGD Tarrasch D32

C.J. Arvind 2218
Mark Harden 1973

San Antonio Chp. 2012 (4)

1.d4 e6 2.c4 d5 3.Nc3 c5 4.cxd5 exd5 5.Nf3 Nc6 6.Bg5 f6 7.Bf4 Be6 8.dxc5 Bxc5 9.e3 Nge7 10.Bb5 0-0 11.0-0 a6 12.Ba4 b5 13.Bc2 Qb6 14.Rc1 Rfd8 15. Qe2 Bf7 16.a3 Ng6 17.Bg3 d4 18.Ne4 Bf8 19.exd4 Bc4 20.Bd3 Bxd3 21.Qxd3 Nxd4 22.Bc7 Ne6 23.Qxd8 1-0

Bird's Opening A03

Andrew N. Lozano 1963
James Rohrbaugh 2203

San Antonio Chp. 2012 (4)

1.f4 d5 2.Nf3 g6 3.d3 Nf6 4.c3 Bg7 5.Qc2 Nbd7 6.e4 0-0 7.e5 Ne8 8.Be3 c5 9.d4 b6 10.Qf2 Nc7 11.h4 h5 12.Bd3 f5 13.Ng5 Qe8 14.dxc5 bxc5 15.Bxc5 Nxc5 16.Qxc5 Qd7 17.Nd2 Rb8 18.b3 Ba6 19.Bxa6 Nxa6 20. Qd4 Rfc8 21.0-0 e6 22.Rac1 Bf8 23.b4 Nc7 24.Kh1 Qa4 25.Qd3 Rb6 26.Ndf3 Qa3 27.Qd2 Nb5 28.Nxe6 Rxe6 29.Ng5 Qa6 30. Nxe6 Qxe6 31.Rfd1 Rc4 32.Qe3 Re4 33.Qd3 Rc4 34.a4 Nc7 35. Qe3 Qb6 36.Qxb6 ½-½

Irregular QID A10

Gregg Stanley 2133
Eugene Kohnitz 1969

San Antonio Chp. 2012 (4)

1.c4 b6 2.Nc3 e6 3.Nf3 Bb7 4.g3 g5!? [Ever the adventurous one, Kohnitz once played 1.a3 against me in a state championship!] 5.e4 h6 6.Bg2 Bg7 7.d4 d6 8. Be3 Nd7 9.Qc2 Ngf6 10.h3 g4 11.Nh4 gxh3 12.Bxh3 Nf8 13.0-0 b5!? [13...Qe7] 14.cxb5 d5 15.exd5 [15.e5 Ne4 16.Nxe4 dxe4 17.Bf1 Bd5 18.Kb1±] 15... Nxd5 16.Bg2 c6 17.bxc6 Bxc6 18.Ne4 [18.Bxd5 Bxd5 19.Qa4+ Qd7 20.Nf5 exf5 21.Qxd7+ Kxd7 22.Nxd5+] 18...Rc8 19.Kb1± f5 20.Nc5 Bf6 21.Nf3?? [Maybe not losing, but certainly tossing away White's advantage. 21.Rhe1! creates strong threats based on Nxe6.] 21...Nxe3 22.fxe3 Be4 23.Nxe4 Rxc2 24.Nxf6+ Qxf6 25.Kxc2 Nd7 26.Kb1? [⊖26.Rd3 Ke7 27.Rh3 e5]]



26...e5? [26...Qg6! 27.Rc1 Qxg3 28.Rhg1 Kf7] 27.Rc1 e4 28.Nh4 0-0 29.Bh3 Qa6 [29...Qg5 30.Rc6 Qxe3 31.Nxf5 Qf3 32.Ne7+ Kh7 33.Rxh6+ Kxh6 34.Bg2+ Kg5 35.Bxf3 exf3=] 30.Nxf5 h5 31.Ne7+ [31.Bf1! Qa5 32.Bc4+ Kh7 33.Rxh5+ Kg6 34.g4+] 31...Kf7 32.Nc6 Ke8 33.Ka1 [33.Bxd7+ Kxd7 34.Ne5+

Ke7 35.Rc7+ Kd8 36.Rc4 Rf5 37.Rhc1+-] 33...Nf6? [33...Qe2= keeps the game alive.] 34.Ne5 Rg8?? [34...Ng4 35.Bxg4 hxg4 36.Rc4+] 35.Rc6 Qe2 36.Rxf6 Qxe3 37.Rhf1 Qxg3 38.Be6 Qg1 39.Bf7+ Ke7 40.Bxg8 1-0

French Defense C00

Ernesto Malazarte 2168
Christopher Barthold 1706

San Antonio Chp. 2012 (4)

1.e4 e6 2.Nf3 d5 3.Nc3 Bb4 4.a3 Bxc3 5.dxc3 c5 6.exd5 exd5 7.Bb5+ Bd7 8.Be2 Be6 9.0-0 a6 10.Ng5 Nf6 11.Nxe6 fxe6 12. Bh5+ Nxh5 13.Qxh5+ Kd7 14.c4 g6 15.Qg4 d4 16.Re1 Qf6 17.b4 b6 18.bxc5 bxc5 19.Rb1 Ra7 20.Rb6 Nc6 21.Rxc6 1-0

Sicilian Closed B25

Sadia Queshi 1691
Dale Dike 1987

San Antonio Chp. 2012 (4)

1.e4 c5 2.Nc3 Nc6 3.g3 g6 4. Bg2 Bg7 5.d3 d6 6.f4 e6 7.Be3 Nge7 8.Nf3 0-0 9.0-0 Nd4 10. Rb1 Rb8 11.Ne2 Nxf3+ 12. Bxf3 b6 13.d4 Bb7 14.Qd2 f5 15.exf5 Bxf3 16.Rxf3 Nxf5 17. Bf2 Qc7 18.dxc5 dxc5 19.c3 Rbd8 20. Rd3 Rxd3 21.Qxd3 Rd8 22.Qc2 Qd6 23.c4 Nd4 24.Qe4 Qc6 25. Nc3 Qxe4 26.Nxe4 e5 27.fxe5 Bxe5 28.b3 Nc2 29.Rc1 Nb4 30. a3 Nc6 31.Re1 Bd4 32.Bxd4 Rxd4 33.Re3 Na5 34.a4 Nxb3 35.Rxb3 Rxe4 36.a5 bxa5 37. Ra3 Rxc4 38.Rxa5 Rc1+ 39.Kg2 Rc2+ 40.Kg1 Rc1+ 41.Kf2 Rc2+ 42.Kf3 Rxh2 43.Rxa7 Rh5 44. Rf7 Rf5+ 45. Ke4 h5 46.Ke3 Kf8 47.Ke4 Ke8 48.Ke3 Kd8 49.Rg7 Rg5 50.Kf4 Rg4+ 51.Ke5 Rxg3 52.Kd6 Ke8 53.Kxc5 Kf8 54.Rd7 Re3 55.Kd4 Re7 56.Rd6 Kf7 57. Kd5 Re2 58.Kc4 Kg7 59.Rd3 Re5 60.Kd4 Re1 61.Kc4 h4 62. Rd4 g5 63. Rd6 h3 64.Rd3 h2

0-1

Caro-Kann B10

Martin Gordon 1984
K.J. Furlong 1695

San Antonio Chp. 2012 (4)

1.e4 c6 2.b3 e5 3.Bb2 d6 4.Nf3
Bg4 5.d4 Nd7 6.h3 Bh5 7.Be2
Bg6 8.dxe5 dxe5 9.Nbd2 Qc7
10.Nh4 Ngf6 11.Nxg6 hxg6 12.
Bf3 0-0-0 13.Qe2 Qa5 14.0-0
Bb4 15.Nc4 Qc7 16.a4 Rh4 17.
c3 Be7 18.b4 Nh5 19.g3 Rxh3
20.Bg2 Nxg3 21.fxg3 Rxg3 22.
Rf3 Rxf3 23.Qxf3 f6 24.Bh3 Kb8
25.a5 Nf8 26.Bc1 g5 27.Be3 c5
28.b5 Rd3 29.b6 axb6 30.axb6
Qc6 31.Qe2 Rxc3 32.Qa2 1-0

Ruy Lopez C64

Kelly Clover 1844
Dang Nguyen 1592

San Antonio Chp. 2012 (4)

1.e4 e5 2.Nf3 Nc6 3.Bb5 Bc5
4.c3 d6 5.d4 exd4 6.cxd4 Bb4+
7.Nc3 a6 8.Bxc6+ bxc6 9.Qa4
Bxc3+ 10.bxc3 Bd7 11.Qc2 Nf6
12.e5 Nd5 13.0-0 0-0 14.Ba3
Bg4 15.Qe4 f5 16.exf6 Bxf3
17.Qe6+ Rf7 18.gxf3 Qxf6 19.
Qxf6 Rxf6 20.c4 Nb6 21.c5 Nc4
22.Bb4 a5 23.Rfc1 d5 24.Be1
Rxf3 25.Rab1 Rd3 26.Rb7 Rxd4
27.Rxc7 Rg4+ 28.Kf1 Rg6 29.
Rb1 Re8 30.Rbb7 a4 31.Ra7 a3
32.Rd7 Ne5 33.Rd6 Nf3 34.
Rxg6 Rxe1+ 35.Kg2 Nh4+ 36.
Kg3 Nxg6 37.Rxa3 Rg1+ 38.Kf3
Ne5+ 39.Kf4 Nc4 40.Ra7 Rg2
41.Kf3 Rxh2 42.Ra6 Rh1 43.Kf4
Rf1 44.f3 Kf7 45.a4 Ra1 46.Kf5
g6+ 47.Kg5 Ne5 48.Ra7+ Ke6
49.Kf4 Nd3+ 50.Kg5 Nxc5 51.
Rxh7 Rxa4 52.Rg7 d4 53.Rxg6+
Kd5 54.f4 Ne4+ 55.Kh6 d3 56.
Rg1 d2 57.Rd1 Rd4 58.f5 Nc3
59.f6 Nxd1 60.f7 0-1

Dutch Defense A89

Usman Qureshi 1474
Alfredo Garcia 1831

San Antonio Chp. 2012 (4)

1.d4 f5 2.g3 g6 3.Bg2 Bg7 4.c4
Nf6 5.Nf3 0-0 6.0-0 d6 7.Nc3
Nc6 8.Qc2 e5 9.dxe5 dxe5 10.
Rb1 Qe8 11.e4 fxe4 12.Nxe4
Nxe4 13.Qxe4 Bf5 14.Qh4 h5
15.Qg5 Bg4 16.Qe3 e4 17.Nh4
and the rest was not legible. 0-1

French Defense C01

Mike Arocha 1235
Gary Zintgraff 1741

San Antonio Chp. 2012 (4)

[J.P. Hylltin] 1.e4 d5 2.exd5 Nf6
3.c4 e6 [3...c6 4.dxc6 Nxc6] 4.d4
[4.dxe6 Bxe6 5.d4] 4...exd5 5.c5
Be7 6.Be2 0-0 7.Nf3 Re8 8.0-0
c6 9.b4 a5 10.b5 cxb5 11.Bxb5
Nc6 12.Ne5 Qc7 13.Nc3 Be6
14.Bf4 Qc8 15.f3 Nd7 16.Na4
Bd8 17.Nxd7 Qxd7 18.Re1 Qe7
19.Nc3 Qd7 20.Qb3 Bc7 21.Bg5
h6 22.Bh4 g5 23.Bf2 Rad8 24.
Rab1 Qc8 25.Ba4 Qb8 26. Qxb7
Bxh2+ 27.Kh1 Nb4 28.Qxb8
Bxb8 29.Bxe8 Nd3 30.Re2
Nxf2+ 31.Rxf2 Rxe8 32.Rfb2
Bf4 33.Ne2 Bf5 34.Nxf4 Bxb1
35.Nxd5 Re1+ 36.Kh2 Bd3 37.
c6 Rc1 38.c7 Ba6 39.Rb8+
[39.Rb6 Bc8 40.Rb8] 39...Kg7
40.Ne7 Rxc7 41.Nf5+ Kg6 42.
Rb6+ Kxf5 43.Rxa6 Rd7 44.
Rxa5+ Ke6 45.Re5+ Kf6 46.Re4
Ra7 47.Re2 Ra3 48.Kg3 h5 49.
d5 Rd3 50.a4 Rxd5 51.Ra2 Ra5
52.f4 g4 53.Kf2 Kf5 54.Ke3 h4
55.Ra3 Kg6 56.Kf2 g3+ 57.Kf3
f5 58.Ra1 Kf6 59.Ke3 Kg6 60.
Kf3 Kh5 61.Ra3 Kh6 62.Ra1
Kg6 63.Ra3 Kh5 64.Ra1 Rc5 65.
a5 Rc3+ 66.Ke2 Rc2+ 67.Kf1
Rc7 68.a6 Ra7 69.Ra5 Kg4 70.
Ra4 h3 71.gxh3+ Kxh3 72.Kg1
Rd7 73.Ra1 Ra7 $\frac{1}{2}-\frac{1}{2}$

QGD Slav D13

Claudia Munoz 1873
Raymond Grillo 1641

San Antonio Chp. 2012 (4)

1.d4 d5 2.c4 c6 3.cxd5 cxd5
4.Nc3 Nf6 5.Nf3 e6 6.Bf4 a6 7.

a3 Bd6 8.Bg3 0-0 9.e3 b5
10.Bd3 Bb7 11.0-0 Qe7 12.Bxd6
Qxd6 13.Ne5 Nbd7 14.f4 Rac8
15.Qe1 Ne4 16.Nxd7 Qxd7
score illegible 1-0

French Defense C16

Allen Eckert 1723
Josiah Reyes 228

San Antonio Chp. 2012 (4)

J.P. [Hylltin] 1.d4 d5 2.e4 e6
3.Nc3 Bb4 4.e5 Nc6 [4...c5 5.a3
Bxc3+ 6.bxc3 Ne7 7.Qg4 Qc7
8.Qxg7 Rg8 9.Qxh7 cxd4 10.Kd1
dxc3] 5.a3 Bxc3+ 6.bxc3 Nge7
7.Qg4 0-0 8.Bd3 Nf5 [8...f5
9.exf6 Rxf6 10.Qh5 (10.Bg5 Rf8)
] 9.Nh3 f6 10.f4 Nfxd4 11.cxd4
Nxd4 12.0-0 f5 13.Qg3 h6 14.a4
c5 15.Be3 c4 16.Bxd4 cxd3
17.Qxd3 Bd7 18.Bc5 Rf7 19.
Rfd1 Bc6 20.c4 Rd7 21.Bd6 a6
22.cxd5 Bxd5 23.Rac1 Rxd6
24.exd6 Qb6+ 25.Nf2 Bc6 26.
Qe2 Bd7 27.Rc7 Re8 28.Rxd7
Rf8 29.Qe5 1-0

QGD D37

Michael Lange 1349
Khoan Nguyen 1751

San Antonio Chp. 2012 (4)

1.d4 d5 2.c4 c6 3.Nc3 Nf6 4.Nf3
e6 5.Bf4 Nbd7 6.e3 Be7 7.Bd3
dxc4 8.Bxc4 b5 9.Bd3 Bb7 10.
0-0 a6 11.Rc1 0-0 12.Re1 c5 13.
dxc5 Nxc5 14.Ne5 Nxd3 15.
Qxd3 Qxd3 16.Nxd3 Rfd8 17.
Red1 Rac8 18.Ne5 b4 19.Rxd8+
Bxd8 20.Ne2 Rxc1+ 21.Nxc1
Nd5 22.Bg3 Bb6 23.Nd7 Ba7
24.Bb8 Bxb8 25.Nxb8 Nb6 26.
Nd3 a5 27.Nc5 Bd5 28.b3 f5 29.
f3 Kf7 30.e4 fxe4 31.fxe4 Ba8
32.Kf2 Ke7 33.Ke3 Kd6 34.Nba6
e5 35.Nd3 Nd7 36.Naxb4 axb4
37.Nxb4 Nf6 38.a4 Bxe4 39.g3
Bb7 40.h4 Nd5+ 41.Nxd5 Kxd5
42.Kd3 e4+ 43.Kc3 Ba6 44.b4
Bf1 45.b5 e3 46.b6 Kc6 47.a5
h5 48.Kc2 Ba6 49.Kd1 Kb5 50.
Ke2 Kxa5+ 51.Kxe3 Kxb6 52.

f4 Be2 53.Kg5 Kc5 54.Kf4 Kd4 55.g4 Bxg4 56.Kg3 Ke3 57.Kg2 Kf4 58.Kf2 g5 59. hxc5 Kxc5 60.Kg1 h4 61.Kg2 h3+ 62.Kh1 Kh4 63.Kh2 Bf3 64.Kg1 Kg3 65.Kf1 h2 66.Ke1 h1Q+ 67.Kd2 Qd1+ 68.Ke3 Qe2+ 69.Kd4 Kf4 70.Kc3 Ke4 71.Kb4 Kd5 72.Kc3 Be4 73.Kb4 Qb2+ 74.Ka5 Kc5 75.Ka6 Qb6# 0-1

Scotch Game C45

Blake Herrera 1159

Charles Ventimiglia 1563

San Antonio Chp. 2012 (4)

[J.P. Hylltin] 1.e4 Nc6 2.d4 e5 3.Nf3 exd4 4.Nxd4 Bc5 5.Be3 Nxd4 6.Bxd4 Bxd4 7.Qxd4 Nf6 8.Bc4 0-0 9.0-0 d6 10.Nc3 b6 11.Nd5 [11.f4 Bb7 12.Rae1 Re8 13.Bd3] 11...Nxd5 12.Bxd5 Rb8 13.Rad1 Be6 14.Rfe1 c5 15.Qc3 Qc7 16.Rd3 Rbd8 17.Rg3 g6 18.h4 Rfe8 19.Kf1 Bxd5 20. exd5 Rxe1+ 21.Kxe1 Qe7+ 22. Kf1 [22.Re3 Qxh4 23.Qa3 Qh1+ 24.Ke2 Qxg2 25.Qxa7] 22...Qxh4 23.Rh3 Qe7 24.Qd2 [24.Re3 Qg5 25.Qd3] 24...Re8 25.Re3 Qd7 26.Rh3 f5 27.b3 Qg7 28. Qc1 b5 29.c3 Qe7 30.Qd2 Qe4 31.Qd1 Re5 32.Rd3 Qh4 33.Kg1 Qe7 34.Kf1 Re4 35.g3 Kg7 36. Qd2 h6 37.f3 Re5 38.c4 b4 39.Qb2 Qf6 40.Qd2 Re7 41.Kf2 Qg5 42.Qb2+ Qf6 43.Qd2 h5 44. f4 h4 45.Kg2 hxc3 46.Rxc3 Re4 47.Qc1 Qd4 0-1

Four Knights Game C55

Justin Daley 1113

Genta Kaieda 1423

San Antonio Chp. 2012 (4)

1.e4 e5 2.Bc4 Nf6 3.Nc3 Nc6 4.Nf3 Nxe4 5.Bxf7+ Kxf7 6.Nxe4 d5 7.Ng3 Bg4 8.d3 Bd6 9.Ng5+ Qxg5 10.Bxg5 Bxd1 11.Rxd1 Nb4 12.c3 Nc6 13.0-0 Rhf8 14.b4 h6 15.Bc1 a5 16.b5 Na7 17.a4 c6 18.c4 Kg8 19.Bb2 Rf7 20.Bc1 Raf8 21.Be3 d4 22.Bd2

Bb4 23.Ne4 Bxd2 24.Rxd2 Nc8 25.bxc6 bxc6 26.Rb2 Ra7 27. Rfb1 Raf7 28.Rb8 Kh7 29.R1b7 Rxb7 30.Rxb7 Rd8 31.c5 Kg6 32.h4 Rf8 33.h5+ Kh7 34.Rc7 Re8 35.Nf6+ 1-0

QGD D44

Matthew Michaelides 1650

C.J. Arvind 2317

San Antonio Chp. 2012 (5)

1.d4 d5 2.c4 e6 3.Nc3 c6 4.Nf3 Nf6 5.Bg5 dxc4 6.e4 b5 7.e5 h6 8.Bh4 g5 9.exf6 gxh4 10.Ne5 Qxf6 11.Be2 Nd7! 12.Nxc6 Bb7 13.Bf3 a6 14.0-0 Bxc6 15.Bxc6 Rd8 16.Re1 [16.a4 b4 17.Ne4 Qg7 18.Rc1 Rg8 19.Qf3 f5 20. Qh5+ Ke7 21.Qxh4+ Kf7 22. Nd2±] 16...Be7 17.d5 0-0 18. dxe6



18...Ne5 [18...fxe6 19.Bxd7 Kh8 =] 19.Nd5 Rxd5?! [19...Qxe6 20. Nxe7+ Qxe7 21.Qh5 f5 22.a4 bxa4 23.Bxa4 Qf6±] 20. Qxd5? [20.exf7+ Kg7 21.Bxd5+-] 20... Nd3 21.exf7+ Rxf7? [21...Kg7! 22.Re2 Nf4 23.Qe4 Nxe2+ 24. Qxe2 Rxf7=] 22.Be8 Qxf2+ 23. Kh1 Nxe1 24.Qxf7+ Qxf7 25. Bxf7+ Kxf7 26.Rxe1 Bf6 27.Re2 Bd4 28.Rd2 Be5 29.Kg1 Ke6 30. h3 b4 31.Kf1 c3 32.bxc3 bxc3 33.Re2 [33.Rd8 Kf5 34.Ke2 Ke4 35.Re8+-] 33...Kd5 34.Ke1 Kd4 35.Kd1 Bf4 36.Kc2 Be3 37.Re1 a5 38.Rf1 1-0

English Opening A35

James Rohrbach 2203

Mark Harden 1973

San Antonio Chp. 2012 (5)

1.c4 c5 2.Nc3 Nc6 3.Nf3 e6 4.g3 g6?! 5.d4! cxd4 6.Nxd4 Bg7 7.Ndb5 Nge7 8.Nd6+ Kf8 9.Bg2 Bxc3+ 10.bxc3 Kg7 11.e4!? [11. Bh6+! Kg8 12.Bg5+-] 11...Qc7 [11...Qa5 12.Qd2 h6 13.Rb1±] 12.Qd2 Rf8 [12...Qa5 13.Qh6+ Kg8 14.0-0+-] 13.Qh6+ Kg8 14.Bg5 f6 15.Bxf6! Rf7 16.Nxf7 Kxf7 17.e5 d6 18.Qxh7+ Ke8 19.Bxc6+ bxc6 20.Qh8+ Kf7 21. Qg7+ Ke8 22.exd6 Qxd6 23. Rd1 Qc5 24.Qh8+ Kf7 25.Qg7+ Ke8 26.Bxe7 Qxe7 27.Qxg6+ Kf8 28.Rd3 Qc5 29.Qf6+ Kg8 30.Rd8+ Kh7 31.Rh8# 1-0

Pirc Defense B07

Alfredo Garcia 1831

Ernesto Malazarte 2168

San Antonio Chp. 2012 (5)

1.e4 d6 2.d4 g6 3.Nc3 Bg7 4. Be3 Nf6 5.f3 a6 6.Bc4 Nc6 7. Nge2 b5 8.Bb3 0-0 9.Qd2 Re8 10.0-0-0 Na5 11.Kb1 Nxb3 12. cxb3 b4 13.Na4 Rb8 14.g4 Bd7 15.h4 e5 16.d5 Bxa4 17.bxa4 b3 18.a3 Nd7 19.h5 Nb6 20.hxc6 hxc6 21.Rc1 Nxa4 22.Bh6 Bf6 23.Be3 Bg7 24.Nc3 Nb6 25.Qh2 Nd7 26.Bh6 Bh8 27.Bg5 Bf6 28.Qh7+ Kf8 29.Qh8+ Bxh8 30. Bxd8 Rxd8 31.Rxh8+ Ke7 32. Rxd8 Kxd8 33.Rh1 Ke7 34.g5 Nf8 35.Na4 f6 36.gxf6+ Kxf6 37. Rc1 Rb7 38.Rc6 Nd7 39.Rxa6 ... (illegible) 1-0

English Opening A10

Dale Dike 1987

Andrew N. Lozano 1963

San Antonio Chp. 2012 (5)

1.c4 f5 2.Nc3 Nf6 3.g3 g6 4.Bg2 Bg7 5.d3 0-0 6.Bd2 d6 7.Qc1 Nc6 8.Bh6 e5 9.Bxc7 Kxc7 10. e3 Qe8 11.Nge2 e4 12.d4 g5

13.f3 Nb4 14.0-0 c6 15.fxe4 fxe4
 16.a3 Nd3 17.Qd2 d5 18.cxd5
 cxd5 19.Nc1 Nxc1 20.Raxc1
 b6? [20...Be6=] 21.Rxf6! What is
 ironic is that a similar pseudo-
 sac was used by Nathanael, who
 had Black in a closed French, to
 defeat me in the SA Invitational
 last October. - SKA 21...Rxf6
 22.Nxd5 Rh6 23.Nc7 Qh5 24.
 Bxe4 Rb8 25.Nd5 Bg4? Black
 didn't want to block the queen's
 access to h2 with ...Bh3, but the
 text blocks access to d1 in some
 lines. [25...Bh3 26.Rc7+ Kh8 Of
 course now 27.Qf2?? is not possi-
 ble. 27.Bd3 Rf8 28.Rc1± (28.e4
 Bg2!!=)] 26.Rc7+ Kh8 27.Qf2+-
 Qh3?? [27...Be6 28.Nc3 Kg8
 29.Rxa7±] 28.Rf7 Rg8 29.Ne7
 Be6 30.Nxg8 Kxg8 31.Rxa7 1-0

Sicilian Najdorf B92

Dang Nguyen 1592
 Martin Gordon 1984

San Antonio Chp. 2012 (5)

1.e4 c5 2.Nf3 d6 3.d4 cxd4 4.
 Nxd4 Nf6 5.Nc3 a6 6.Be2 b5
 7.Be3 e5 8.Nb3 Bb7 9.f3 Be7
 10.0-0 Nbd7 11.Qd2 Rc8 12.
 Rad1 0-0 13.Kh1 Nb6 14.Na5
 Ba8 15.a3 Qc7 16.Nb3 Rfd8 17.
 Bxb6 Qxb6 18.Nd5 Nxd5 19.
 exd5 g6 20.f4 f5 21.fxe5 dxe5
 22.c3 Bxd5 23. Qc2 Qe6 24.Nc1
 e4 25.b4 Bf6 26.Qb1 Rxc3 27.
 Rfe1 Qc6 28. Na2 Rc2 29.Nc1
 Rb2 30.Qa1 Rxe2 31.Qb1 Rb2
 32.Qa1 Rxc2 33.Qb1 Rb2 34.
 Qa1 e3+ 35.Kg1 Rg2+ 36.Kf1
 Bc4+ 37.Nd3 Qf3# 0-1

English Opening A20

Eugene Kohnitz 1969
 Allen Eckert 1733

San Antonio Chp. 2012 (5)

1.c4 e5 2.g3 d6 3.d4 exd4 4.
 Qxd4 Nc6 5.Qd2 Nf6 6.Bg2 Be7
 7.Nc3 0-0 8.b3 Bg4 9.h3 Be6
 10.e4 Qd7 11.Nge2 Qc8 12.Nd5
 Re8 13.Bb2 Ne5



14.Nxe7+ Rxe7 15.f4 Nc6 16.
 Bxf6 gxf6 17.g4 Qf8 18.f5 Bd7
 19.Nc3 Qg7 20.Nd5 Re5 21.
 Nxc7 Rd8 22.0-0-0 a5 23.Bf3 a4
 24.h4 Qf8 25.g5 axb3 26.axb3
 Na5 27.Kb2 Bc6 28.gxf6 Bxe4
 29.Bxe4 Rxe4 30.Qg2+ Kh8
 31.Qxe4 1-0

Queen's Indian E14

Charles R. Davis 1743
 Claudia Munoz 1873

San Antonio Chp. 2012 (5)

1.e3 Nf6 2.d4 e6 3.c4 Be7 4.Nc3
 0-0 5.Nf3 d5 6.Bd3 b6 7.cxd5
 exd5 8.0-0 Bb7 9.Bd2 c5 10.
 dxc5 bxc5 11.b3 Nbd7 12.Rc1
 Rc8 13.Bf5 Rb8 14.Re1 Re8 15.
 Rc2 Nb6 16.Bc1 c4 17.Nb5 Ba6
 18.Nbd4 Qd6 19.Bb2 g6 20.Bh3
 Ne4 21.Nd2 Nc5 22.Ba3 Qf6 23.
 Bxc5 Bxc5 24.Qf3?? Bxd4 0-1

Torre Attack D03

Nathan Ray Lozano 1477
 Matthew Ortiz 1287

San Antonio Chp. 2012 (5)

1.d4 Nf6 2.Nf3 d5 3.Bg5 e6 4.e3
 Be7 5.Bd3 0-0 6.0-0 h6 7.Bh4
 b6 8.Ne5 Bb7 9.Nd2 c5 10.c3
 Nc6 11.f4 Nxe5 12.fxe5 Ne4 13.
 Bxe7 Qxe7 14.Nxe4 dxe4 15.
 Bc2 Rad8 [15...Qg5 16.Rf4 cxd4
 17.cxd4±] 16.Qg4 Ba6 [16...Qg5]
 17.Rf2 [17.Rf6! Bd3 18.Bxd3
 exd3 19.Rxh6 c4 (19...f6 20.Qg6
 fxe5 21.Qh7+ Kf7 22.Rg6 Ke8

23.Rxg7 Qf6 24.Qh5+ Rf7 25.
 Rxf7 Qxf7 26.Qxe5+-) 20.Rh4 f5
 21.Qh5 Qe8 22.Qh7+ Kf7 23.Rh6
 Ke7 (23...Rg8 24.e4 Ke7 25.exf5
 exf5 26.Rf1+-) 24.Qxg7+ Qf7 25.
 Qg5+ Ke8 26.Rf6 Qe7 27.e4+-]



17...Bd3 18.Bxd3 exd3 19.Rd1
 c4 20.Rf3 Qg5 21.Qxg5 hxg5
 22.Rg3 f6 23.exf6 gxf6 24.h4
 Rd5 25.e4 Ra5 26.a3 Bb5 27.
 Rd2 Kf7 28.e5? [28.Rg4] 28...
 gxh4 29.Rg4 fxe5+- 30.dxe5
 Rc5 31.Rxh4 b5 32.Rh7+ Kg6
 33.Rxa7 Rxe5 34.Ra6 Rf6 35.a4
 bxa4 [35...Re2! 36.Rd1 d2 37.
 Kh2 Kf5+] 36.Rxa4 Re2? [36...
 Rf4±] 37.Rd1?? [37.Rxe2 dxe2
 38.Ra1=] 37...d2+- 38.Raa1 Rf2
 39.g3 Kg5 40.Kh1 Kg4 41.Kg1
 Kf3 42.g4 Rg2+ 43.Kh1 Rh2+
 44.Kg1 Reg2+ 45.Kf1 Rh1# 0-1

QGD D37

Michael Lange 1349
 Satvik Amerineni 580

San Antonio Chp. 2012 (5)

1.d4 d5 2.c4 e6 3.Nc3 Nf6 4.Nf3
 g6 5.Bf4 Na6 6.e3 c6 7.Bd3 Bg7
 8.0-0 0-0 9.Re1 c5 10.dxc5
 Nxc5 11.cxd5 Nxd5 12.Nxd5
 Qxd5 13.Bc2 Rd8 14.e4 Nxe4
 15.Bxe4 Qxe4 16.Qxd8+ Bf8
 17.Rxe4 b5 18.Rd4 Bb7 19.Qf6
 Bg7 20.Rd8+ Rxd8 21.Qxd8+
 Bf8 22.Bh6 Bc6 23.Qxf8# 1-0

Solution: 1.Qe6 (1...Kd3 2.0-0-0#;
 1...Kb2 2.Qa2#; 1...b3 2.Qe2#).

78th Annual Southwest Open

Aug. 1 or Sept. 1-3 7 Round Swiss Three sections

Sheraton Dallas North Hotel, 4801 Lyndon B. Johnson Fwy., Dallas, TX 75244
\$75 flat rate, reserve by 8/17; 972-661-3600, request group rate for Dallas Chess Club.

\$ 8,950 in prizes based on 175 full entries, 75% guaranteed

	OPEN			RESERVE (U2000)			NOVICE (U1400)			
	2200-23990		U2200		B	U1600		E	U1000	unr.
1st	\$1000	\$700	\$700	\$800	\$600	\$500	\$500	\$400	\$300	\$200
2nd	\$500		\$350	\$400	\$300	\$250	\$250	\$200	\$150	
3rd	\$250			\$200	\$150	\$125	\$125			

Time Controls: OPEN: **Game/90 with 30 second increments**

RESERVE & NOVICE: **30/90, SD/1.** Rd. 1 of 3-day: G/115 (deduct 5 min./delay)

Round 1: 7:45 p.m. Friday (4-day) or 10 a.m. Saturday (3-day)

Rounds 2-7: Saturday 2:30 – 8; Sunday 12 – 6:15; Monday 9:30 – 3:15

Up to two ½ point byes available if requested before end of Rd. 2 (and before any 1 point bye is awarded). Byes for both round 6 and 7 not permitted.

Entry Fees: \$88 if received by 8/22. \$99 at site. TCA membership required, o.s.a.
Junior (U19) entry: \$80 by 8/22 \$90 later. **Re-entry \$50** (not available in Open).
Senior (65+) / handicapped / additional family member: \$52 by 8/22, \$65 later.

Entries: checks payable to Dallas Chess Club, c/o Barb Swafford, 2709 Longhorn Trl., Crowley, TX 76036-4719

Registration: 4-day: Fri, evening 6:15 - 7:15. 3-day: Sat. 9 - 9:30 a.m.

K-12 Scholastic Event (Sat. Sept. 1): Two Sections: Championship and U800
5 Round Swiss (no elimination), Rounds 1-3 G/30 and Rounds 4-5 G/45.

EF: \$29 by 8/22, \$43 later. Reg. 8:15-8:45 a.m. USCF membership required.
Rd. 1 at 9:30 a.m., others a.s.a.p. with lunch break.

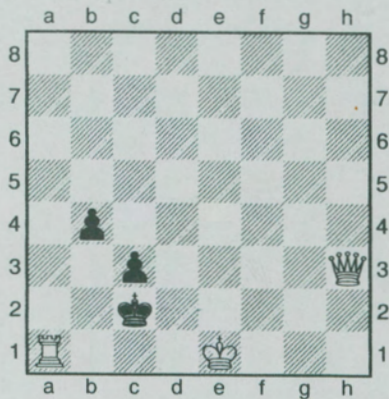
TCA membership meeting 9:30 a.m. Sunday, Sept. 2

For more information, contact Barb Swafford, 214-632-9000.

Texas Chess Association
P.O. Box 501
Helotes, TX 78023-0501

Non-Profit Org.
U.S. Postage
PAID
San Antonio, TX
Permit No.

Kenan Velihanov
StrateGems, 2003



White to move, mate in two
Solution: p. 26