

# TEXAS KNIGHTS

The official publication of the Texas Chess Association

Volume 59, Number 4

P.O. Box 151804, Ft. Worth, TX 76108

March-April 2018 \$4

## Texas Scholastics!



*Daniel Guel was tough to beat in the 2018 North/Central Scholastic Championships. See Page 8.*

### Table of Contents

From the Desk of the TCA President.....	4
2018 Texas Scholastic Championships .....	6
Dachey Lin (2340) vs Daniel J Guel (1704) Annotated by Jason Howell .....	8
Region VI Report by J. P. Hyltin .....	10
Historical: The RRSO III Story by Victor Yaward.....	12
<b>Tactics Time!</b> by Tim Brennan (Answers on page 18) .....	15
Leader List.....	16
Custom ChessBase Database Icons by Jeff French.....	19
Coach's Corner-e4 by Robert L. Myers .....	24
Upcoming Events .....	30

# TEXAS CHESS ASSOCIATION

A 501(c)(3) educational nonprofit corporation dedicated to promoting chess in Texas

TexasChess.org  
Facebook.com/TexasChess

**President:** Eddie Rios, riose@nwcable.net.

**Vice-President:** Forrest Marler, fzmarder@gmail.com.

**Secretary:** John Hyltin, jphyltin@yahoo.com.

**Treasurer:** Barb Swafford, 2709 Longhorn Trail, Crowley, TX 76036-4719; barbound@gmail.com.

**Editor:** Jeff French, P.O. Box 151804, Ft. Worth, TX 76108; texasknightsed@gmail.com.

**Website Admin:** Chris Wood, chris@handsomeweb.com.

**Facebook Admin:** Jim Hollingsworth, texaschessteam@yahoo.com.

**Tournament Clearinghouse:** Lori Balkum, Lori.Balkum@austinchestournaments.com

**Membership Dues (annual):**

**Regular:** \$10, **Family:** \$15.

**Non-subscribing:** \$5.

**Patron:** \$25. **Family Patron:** \$30.

**Junior (18 and under) or Student:** \$7.50.

**Lifetime Regular:** \$200. **Lifetime Patron:** \$500.

**Foreign:** Canada and Mexico \$12.50, Others \$17.50.

**Club:** \$25. **Scholastic Club:** \$10. **Foreign Club:** \$40.

**Ad rates:** \$50/page, \$35/half, \$20/quarter (Club membership includes 1 free quarter-page ad a year), \$1/line.

Send to **TCA Treasurer, 2709 Longhorn Trail, Crowley, TX 76036-4719**. Give name, address, city, state and zip code; also phone and e-mail. Contributions beyond membership fees are tax deductible.

## TCA Hall of Honor

Selby K. Anderson

Joe Beauchamp

Clarence Callaway, Jr.

Michael E. Carpenter

Carmen Chairez

George W. Church, Jr.

Raymond G. Feyes

Jack Garcia

Renate Garcia Family

Danny and Brenda Hardesty

James Houghtaling Jr.

Peter Kappler

R. Lynn Leone Family

Patrick C. Long

Mark E. McCue

George A. Mota

Marcus Roberts

Luis Salinas

James Stallings

Clayton Swafford Family

Harmon Throneberry

Louis Thurston

Lakshmana Viswanath Family

**Contributors:** Tim Brennan, Jim Hollingsworth, Jason Howell, J.P. Hyltin, Robert Myers.

**Cover photo:** Eric Guel

Game annotations, if not attributed, are a collaboration of Jeff French and *Fritz 16*.

Send submissions by e-mail to **texasknightsed@gmail.com**, or mail to **P.O. Box 151804, Ft. Worth, TX 76108** (please include contact information). All contents of *Texas Knights* ©2018 by the Texas Chess Association, Inc. No part of this publication may be reproduced in any way without express consent of the editor.



- **Articles**
- **Results**
- **Photos**
- **Games**

Content for the next issue needs to be delivered to the Editor by **May 10th!**



## From the Desk of the Editor

Hello Texas,

The last couple of months have been busy. Some of us are a little worse-for-wear because of it. Our Treasurer was unable to provide an update to the Treasurer's Report this time (so it's duplicated from the last issue). We'll catch up next issue.

What you will find in this issue.

- We've had 2 Scholastic tournaments. This issue has some results from the tournaments. In addition, we have annotations of an exciting game from the North/Central Tournament.
- We have a report from the Region VI Scholastic Championships with some games included.
- We have a historical document from Red River Shootout (RRSO) III. RRSO XVI is quickly approaching and will be held in Davis, Oklahoma on April 21st. We'll have a report on the results (and possibly some games) in an upcoming issue of *Texas Knights*.
- The Coach's Corner article also includes a Fritz 16 annotated game. The diagrams included in the game are *Tactics* that Fritz provided ... see if you can see what Fritz found during its analysis.
- We have new Tactics Time puzzles from Tim Brennan. The next issue will exceed 200 puzzles that Tim has provided for our enjoyment. Thanks Tim!
- I also provided some instruction in this issue on how to add custom icons to your ChessBase databases. Again, we were short on submissions. So, rather than less pages, I thought this might be useful to some. I actually wrote something similar a while back so I didn't forget how to do it, so I cleaned it up and added it to this issue.

I hope everyone is getting out and playing. There are plenty of Chess activities in Texas.

The next issue of *Texas Knights* should be in your mailbox sometime around the first week of June. Also, don't forget, you can find the digital, full color edition with Games and Tactics (all downloadable) on our website: [TexasChess.org](http://TexasChess.org).

— **Jeff French**



## From the Desk of the TCA President

Hello everyone,

State Scholastics have come and gone. I thank the organizers who hosted these events. I also want to thank all the volunteers, directors, parents and coaches for their physical sacrifices and support. The players also gave their “all”.

But, we haven’t reached the end of the season. Upcoming we have Nationals to contend with. I encourage all players to put forth their best efforts and represent Texas to the best of their abilities. Then, we still have to entertain our Chess playing satisfaction with our Championship tournaments such as the Texas Team, the Texas Junior Team, the Texas Senior, the Texas Women’s and the Texas Armed Forces. Also, let’s not forget, the Texas Open and the Southwest Open.

We have plenty to do, including selecting the Barber and Denker representatives for Texas at the U.S. Open in Wisconsin. We will also be announcing our champion from the Senior Open for the first time. Yes, we have a lot to do in Texas, as do our Chess players. As always, see you at the boards, enjoy the game!

— **Eddie**

---

Thanks to everyone who has contributed to TCA by using Amazon Smile. Amazon donates 0.5% of all eligible purchases. So far this year we’ve received \$6.04. Not a huge amount but every contribution helps us promote chess in Texas. It works when you buy using Amazon Smile instead of Amazon. Go to [smile.amazon.com](http://smile.amazon.com) and choose **Texas Chess Association**.



Support the **Texas Chess Association** by starting your shopping at  
<http://smile.amazon.com/ch/74-2673185>

# TCA Treasurer's Report - January 10 2018

Income		Expenses	
September memberships	\$322.50	Starter chess sets	\$216.50
October memberships	\$269.50	Texas Knight Sept-Oct 2017	\$891.37
November memberships	\$25.50	2017 National Girls Representative WFM Priya Trakru	\$300.00
December memberships	\$118.00	2017 Barber Representative NM Justin Wang	\$300.00
January memberships (so far)	\$37.50	Total	\$1,707.87
2017 SW Open memberships	\$320.00		
2017 N/C Texas Grade memberships	\$340.00		
2017 Texas Masters	\$10.00		
Smile Amazon Donation	\$6.04		
Total \$1,449.04			



## January 10, 2018

<b>WF checking account balance</b>	<b>\$1,138.25</b>
<b>BOA checking account balance</b>	<b>\$11,099.04</b>

## 2018 Texas Scholastic Championships

**Additional Info South:** <https://sites.google.com/site/regionxchessorg/2017-tca-region-x-scholastic-championship>

**Additional Info North/Central:** <http://www.dallaschess.com/2018%20Texas%20Scholastic/index.htm>

There were two Texas Scholastic Championship Tournaments played in March. The **South** Scholastic Championship was played in **Edinburg** from March 2nd to March 4th and had **1315** participants. The **North/Central** Scholastic Championship was played in **Houston** from March 9th to March 11th and had **791** participants.

### South Results

**High School Championship:** 104 players. **NM Emily Nguyen** was undefeated with a score of 7.0/7.

**High School JV Championship:** 101 players. **Wells Hero** was undefeated with a score of 7.0/7.

**Middle School Championship:** 131 players. **Aparna Yellamraju** won with a score of 6.5/7.

**Middle School JV Championship:** 110 players. **Rafael Rodriguez** won with a score of 6.5/7.

**Elementary Championship:** 179 players. **Joaquin Razo** won with a score of 6.5/7.

**Elementary JV Championship:** 211 players. **Ivan Espinoza** was undefeated with a score of 7.0/7.

**Elementary Novice Championship:** 64 players. **Sean Quintanilla** won with a score of 6.5/7.

**Primary Championship:** 133 players. **Luis Miramontes** and **Kaitlynn McNutt** shared the top spot with a score of 6.5/7.

**Primary JV Championship:** 135 players. **Oscar Buentello** and **Tomas Gonzalez** shared the top spot with a score of 6.5/7.

**K-1 Championship:** 162 players. **Abram Lopez** was undefeated with a score of 7.0/7.

### North/Central Results

**High School Championship:** 95 players. **Sam Land Capocyan** and **Bovey Liu** shared the top spot with a score of 6.5/7.

**High School JV Individual:** 77 players. **Joey Pena** was undefeated with a score of 7.0/7.

**Middle School Championship:** 103 players. **Daniel Hung, Ganesh Kumarappan** and **Atreya Vaidya** shared the top spot with a score of 6.0/7.

**Middle School JV Championship:** 51 players. **Zahira Pichardo** won with a score of 6.5/7.

**Middle School Novice Championship:** 51 players. **Aime Argandona** was undefeated with a score of 7.0/7.

**Elementary Championship:** 107 players. **John Capocyan** won with a score of 6.5/7.

**Elementary JV Championship:** 65 players. **Gurshaan Thukral** was undefeated with a score of 7.0/7.

**Elementary Novice Championship:** 73 players. **Julian Andersen** was undefeated with a score of 7.0/7.

**Primary Championship:** 48 players. **Aryan Gutla** won with a score of 6.0/7.

**Primary JV Championship:** 80 players. **Axel Peterson, Neil Shaw, Preston Aranda, Joaquin Garza** and **Aneesh Ragavan** shared the top spot with a score of 6.0/7.

**K-1 Championship:** 52 players. **Andrew Lau** won with a score of 6.5/7.

## Top Team Results

### South

**High School:** Pioneer High School Score 24.5

**High School JV:** JLHS Score 21.0

**Middle School:** STPA Score 24.0

**Middle School JV:** Sharyland N. JH Score 21.0

**Elementary:** Sharyland ISD Score 23.0

**Elem JV:** Our Lady of Sorrows Score 25.0

**Primary:** McAllen ISD Score 22.0

**Primary JV:** Our Lady of Sorrows Score 25.5

**K-1:** Our Lady of Sorrows Score 21.0

### North/Central

**High School:** San Benito High Score 16.5  
(3-way Tie) Bellaire HS

Sharyland Pioneer HS

**HS JV:** Achieve Early College HS Score 20.0

**HS Grand:** Achieve Early College HS Score 44.5

**Middle School:** Canyon Vista MS Score 21.0

**MS JV:** Henderson MS Score 24.5

**MS Novice:** Henderson MS Score 21.5

**MS Grand:** Henderson MS Score 76.5

**Elementary:** TH Rogers Score 17.5

**Elem JV:** Plainview Home School Score 16.0

**Elem Novice:** St Peter The Apostle Score 18.5

**Elem Grand:** B Bush Elem Score 38.5

**Primary:** Sanchez Elem Score 13.5

**Primary JV:** Garza Elem Score 18.0

**Primary Grand:** TH Rogers Score 53.0

**K-1:** Honor Roll School Score 18.5  
(Tie) TH Rogers

## Dachey Lin (2340) vs Daniel J Guel (1704)

It's not unheard of, but it's also not exactly commonplace when a Class B (1600-1799) player beats an 'Original Life Master'. So, we have to give some kudos to the underdog and try to learn a little something from the game. So, congratulations to Daniel and thank you to Jason Howell of the Waco Chess Club for letting me include his annotations (that he also included on the Waco Chess Club Informant Facebook page). The game was played in the 2018 North/Central Scholastic High School Championship. **OLM Dachey Lin** was the highest rated player participating in the Championships.

### Dachey Lin (2340) – Daniel Guel (1704) [D36]

2018 North/Central Texas Scholastic Cha  
Houston, TX (2), 10.03.2018

**1.d4 Nf6 2.c4 e6 3.Nc3 d5 4.cxd5  
exd5 5.Bg5 Be7 6.Qc2** [6.e3 is played  
much more often, followed by Bd3. The  
reason is the queen might have a bet-  
ter square soon, depending on Black's  
play. For example, after 6. e3 Bf5? 7.  
Bxf6 Bxf6 8. Qb3!, White is already  
winning a pawn.]

**6...0-0 7.e3 c6 8.Bd3 h6 9.Bh4 Nbd7  
10.Nf3 Re8 11.h3?!** [What happens on  
the e-file in the Queen's Gambit tends  
to dictate the outcome of the game.  
Here white should play 11.0-0! followed  
by 12. R(a)e1 to contest the e4 square.  
White should be slightly better, but  
nothing for Black to get too disturbed  
over.]

**11...b6** [11...Bd6!= puts more influence  
on the e4 square from the black rook,  
making it harder for White to play e4 in  
the future.]

**12.g4?** [White clearly wants to castle  
queenside and attack on the g-file. It  
does look attractive, but is a tad prem-  
ature and Daniel shows why. He does  
what the books say, meet a premature  
flank with action in the center.]

**12...Ne4!**



**13.Bxe7 Qxe7 14.Bxe4?** [This makes  
White's position significantly worse. He  
allows Black to occupy e4 with a  
cramping pawn that blocks the White



queen off from any attack white was hoping to cook up on the kingside. It is now dangerous for White to castle on either side.]

[14.0-0-0 had to be preferable, but I still think black is better after 14...b5! when the queenside pawns start rolling forward.]

**14...dxe4 15.Nd2 Nf6 16.0-0-0?!**

[Again, White's position worsens. He had to play 16. Qa4 to stop 16.. .Ba6.]

**16...Ba6! 17.Qa4 Bd3 18.Rdg1**

[White is rushing to get counter play on the g-file. It just isn't fast enough though,]

**18...c5** [Or 18...b5!]

**19.Nb3 cxd4 20.Nxd4 Rec8 21.g5**

[21.Nf5 Qf8 and Black is planning ...Rc4.]

**21...Nd5 22.gxh6** [It appears as if White has something here, but it is an illusion.]

**22...Nxc3** [Even faster was 22...Rc4! 23.Qb3 Qf6!+ stopping Nf5, attacking f2, and planning ...R(a)c8.]

**23.bxc3** [23.Rxg7+ Kh8-+ and White has nothing more.]

**23...Rxc3+ 24.Kb2 Rac8** [24...Rc4!  
25.Qd1 (25.Qa3 Rb4+ 26.Kc3 (26.Ka1

*Rb1+ 27.Rxb1 Qxa3-+)* 26...a5-+)  
25...Rac8-+ and Black has all kinds of mating ideas beginning with ...Qb4ch.]

**25.Rxg7+ Kh8 26.Rhg1** [26.a3 controls b4 and holds on a little longer, but Black is still winning after 26...R3c4 27.Qb3 Qf6-+]

**26...R3c4!** [Diagram # Daniel finds the quickest way to victory and transposes into the lines I just suggested!]

**27.h7 Qe5?** [This unnecessarily complicates matters and reduces Black's advantage considerably. He is still winning, but it would have been much tougher had White played correctly.]

[27...Qf6!-+ threatens Qxf2 and Rc2ch.]

**28.Qb3??** [The final blunder. Now Daniel swiftly decides matters by utilizing the pin on the white.]

[28.Rg8+! Kxh7 29.R8g5! Rc2+ 30.Qxc2 Rxc2+ 31.Kb3 Qxg5 32.Rxg5 Rxf2 and Black is up a pawn, but the game is a far cry from what it was just moves ago.]

**28...Rc2+! 29.Kb1 R2c3+ 30.Ka1 Rc1+ 31.Kb2 R8c2+ 32.Ka3 Qa5+ 33.Qa4 Rxa2+ 34.Kxa2 Qxa4+**

**0-1**

---

## Region VI Report

by J. P. Hyltin

A lot goes into producing an event like a regional scholastic championship. It always makes me question why anyone would take on that responsibility. Certainly our spouses do. But every year these events keep going on and operate smoothly enough that few people really know how it happens.

To answer “how”, I point to people no less remarkable than Marvel Super Heroes, complete with super-powers that translate into an organizational miracle. Like those comic book icons, they fight for a noble cause, a massive one-day event that inspires children to pride and dreams in days to come. This is how their confidence and determination is born. And their efforts are worthy of our appreciation.

Ross Johnson was the chief tournament director for the Region 6 Scholastic Championship tournament. Every round started on time, give or take 5 minutes. I saw no disputes of any significance in any round or result. This is the kind of event where it all looks very easy, just an average tournament with 360 players from 80 different schools.

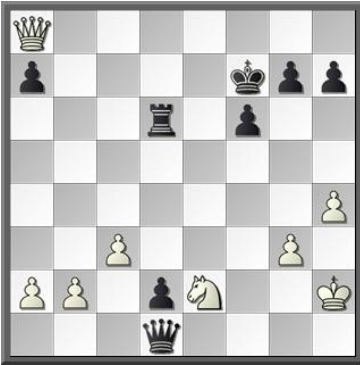
But don't get the impression that efficiency was only achieved by a sacrifice of the human element. Ross watched registrations come in and noted the grade and rating levels where participation levels spiked and was able to add sections as late as a week in advance, preventing the possibility that some sections would have 2 perfect score winners. But added sections mean added trophies, and Robert Greene was able to keep up with that.

### Championship section winners

Section	Individual	Team
High School	Michael Montez	PEACE Homeschool Co-op
Middle School	Ray Zhang	Canyon Vista MS
Elementary	Alexander Rodriguez	Great Hearts Northern Oaks
Primary	Raymond Cai	No qualifying teams!
Adult	Vineet Ravoori	Brian Nailling Household (parent/child competition)

### Reserve section winners

Adrian Gil (High School U1000); Caleb Carrillo (Middle School U1000); Harry Yu (Middle School U650); Oscar Andre Seda (Elementary U1000); Clyde Utkarsh Dhond (Elementary U800); Shaumprovo Debnath (Elementary U600); Javier Palacios (Elementary U400); Ally Wideman (Elementary NEW); Nathan De La Garza (Elementary K-4 NEW); Sean Teoh (Primary U800); Amartya Jami (Primary U600); Aadhav Dhananjeyan (Primary U400); Loren Anguiano (Primary U200); Varun Kotla (Primary NEW); Spencer Henry Cox (Primary K-2 New); Aneesh Katta (Sprout K-1 U600)



One of the most interesting games I witnessed was on board 2 between Ashlyn Miller and Benjamin Johnson in the High School Championship section. I don't have the full game score, but this is what I do have, from memory.

I was sure this was going to be resolved with something like 1. Qg2 Qxe2 2. Qxe2+ Qxe2 3. d1Q. Instead, it went like this, in a time scramble.

**1. Qb7+ Kg6** (The computer recommends escaping the checks with Ke8 or Kf8, and eventually the Rook can block a check with Rd8 and the King can hide on h8) **2. Qe4+** (White could draw with Qe8) **f5?** **3. h5+?** **Kxh5?** (Black could still get back to the Rd8-Kh8 idea with Kf6) **4.**

**Qxf5+ Kh6 5. Qf4+ Kh5 6. Qf5+ g5** (And now, White found the picturesque finish) **7. Nf4+ Kh6 8. Qf8#**

**Leif Johnson – Peyton Braun**

*Region 6 Championship (5)*

Middle School Championship Division

**1. e4 e5 2. Nf3 Nc6 3. Bc4 Nf6 4. Ng5 d5 5. exd5 Na5 6. Bb5+ c6 7. dxc6 bxc6 8. Ba4 Bd6 9. Nc3 O-O 10. d3 h6 11. Nge4 Nxe4 12. dxe4 Ba6 13. Bd2 Rb8 14. Qg4 Bc5 15. O-O-O Nc4 16. Bxh6 Qf6 17. Bxc6?** (An ill-fated attempt to distract the Queen hangs a piece with check.) **Qxh6+ 18. Kb1 Rxb2+ 19. Ka1 Qxc6 20. h4 Bd4 21. Rd3 Rfb8 22. Rg3 g6 23. h5 Bxc3 24. Rxc3 Nd2** (A cold-blooded move, even if she missed the equally pretty finish with Rxa2+) **25. Rb3 Nxb3+ 26. axb3 Qxc2 27. hxg6 Ra2# 0-1**

**Sanjeev Raman – Ayre Seals**

*Region 6 Championship (2)*

Elementary Championship Division

**1. e4 e5 2. Nf3 Nc6 3. Bc4 Nf6 4. d3 Bc5 5. Nc3 O-O 6. Bg5 h6 7. Bh4 Be7 8. O-O Nxe4 9. Bxe7 Nxc3 10. Bxd8 Nxd1 11. Raxd1 Rxd8 12. Rfe1 d6 13. h3 Bf5 14. Re2 d5 15. Bb3 e4 16. dxe4 dxe4 17. Rxd8+ Rxd8 18. Nh4 Rd1+ 19. Kh2 Nd4 20. Re3 Bh7 21. Rc3 g5 22. Rxc7 gxh4 23. Bxf7+ Kf8 24. c3 Nb5 25. Rxb7 Nd6 26. Rxa7 Nxf7 27. b4 Bf5 28. b5 Nd6 29. b6 Rb1 30. c4 Rxb6 31. c5 Rb7 32. Ra8+ Nc8 33. c6 Ra7 34. Rxa7 Nxa7 35. c7 Nb5 36. g3 hxg3+ 37. Kxg3 Nxc7** and Black won

**Darshan Koushik – Ray Zhang**

*Region 6 Championship (5)*

Middle School Championship Division

**1. e4 e5 2. Nf3 Nc6 3. Bb5 a6 4. Ba4 Nf6 5. O-O b5 6. Bb3 Bc5 7. a4 Rb8 8. c3 d6 9. Bc2 O-O 10. axb5 axb5 11. h3 Re8 12. Re1 Bb7 13. d3 h6 14. Nbd2 Bb6 15. Nf1 d5 16. Ng3 dxe4 17. dxe4 Qxd1 18. Rxd1 b4 19. c4 Nd4 20. Nxd4 exd4 21. Re1 Rbd8 22. Bd3 Nd7 23. f3 Nc5 24. Rd1 Nxd3 25. Rxd3 Ra8 26. Rb1 Ra2 27. b3 Rea8 28. Bb2 c5 29. Nf5 Bc7 30. Ne7+ Kf8 31. Nd5 Bxd5 32. cxd5 Re8 33. Rd2 f5 34. exf5 Re5 35. g4 Rxd5 36. Ra1 Rxa1+ 37. Bxa1 Bf4 38. Rd3 Re5 39. Kf2 Kf7 40. Bb2 Kf6 41. h4 Ke7 42. Ba1 Kd6 43. Bb2 Kd5 44. Ba1 Be3+ 45. Kf1 c4 46. bxc4+ Kxc4 47. Rd1 Ra5 48. Bb2 Ra2 49. Bc1 Ra1 0-1**

Alex Relyea and Jim Hollingsworth talked often about how to make Red River Shoot-out (RRSO) III the best ever. Alex and his wife, Nita Patel, were both instructors at the University of Oklahoma. Alex was certain he could coordinate the playing site and both he and Nita would free Jim from director responsibilities. In his early years, Jim organized, directed and played simultaneously in many tournaments. As he was getting older, Jim knew focusing on a good chess game was becoming more challenging with the additional duties. Alex's plan and offer were quite excellent in Jim's mind.

Tom Nichols, RRSO co-Founder, worked Saturdays and could not get off. Frank Berry agreed to be the Oklahoma Chess Team Captain. As Chief Organizer, Jim exchanged many emails with Frank. Frank kept things close to the vest and didn't disclose his activities pulling a team together, beyond saying he was mentioning RRSO at some Oklahoma Chess Foundation (OCF) tournaments. From experience, Jim knew a low Okie turnout like the previous two years would result in a Three-peat for Texas. He figured Oklahoma would be lucky if they showed up with more than fifteen players.

On the Texas side of the Red River, Tom Crane and Tom Kusnierz (the new Watauga Chess Club President) were busy building another Championship team. Overconfidence is not the right word because they expected the Okies who showed would play

as best they could. However, most Texans were certain RRSO III's outcome would be the same as before. It was only logical.

There was no Facebook in those days. However, in the months leading up to RRSO III Jim Hollingsworth was a daily contributor to the online Oklahoma Chess Forum. His agenda was promoting the match by getting a rise out of his Okie counterparts. Puns like, "How many Okies does it take to screw in a light bulb?" were widely responded to. The polemic Bran Whitcomb parried those taunts with his own and added much to the discussions. The Forum Moderator, Mike Crockett, aged ten years in three months while maintaining order and issuing a few time outs. There was a sense more Okies would come to RRSO III, if only to shut Jim up and gloat if Oklahoma won.

When Match Day arrived, there was a mass movement of fanatical chess players on Interstate 35 heading for Norman. Some found nearby lodging the night before and arrived early. Some carpooled or partied in "chess vans" driven by volunteers. Some traveled alone. All journeyed with the hope they would play their individual games well. They would not be disappointed.

Thanks to Alex Relyea and Nita Patel, the playing hall was already set up and looked magnificent. A nearby room, almost as large as the tournament room, was available for skittles and post mortems. At first the

Texas players were shocked every OCF player seemed to be there. This soon shifted to elation as it became clear both sides had 21 rated players. There would be no side event. Everyone would be playing someone on the other team in a match that counted.

In a pre-match leaders huddle, Jim Berry suggested the home team should have white in the first round and reverse colors in the second. There could be a situation where a player had an emergency or got sick and withdrew. The players ranked below on the same team could shift up to avoid a forfeit and colors chaos. All agreed. To date this scenario has never happened. However the RRSO colors tradition began at that moment.

During pre-match announcements, Jim Hollingsworth (briefly) presented an appreciation plaque, in absentia, to Tom Nichols. Jim and Frank Berry promised to present it at a future OCF tournament. Frank Berry, Jim Berry, Tom Crane and others know Jim well and wisely insisted on a "brief" presentation.

Round One was hard fought. Oklahoma, playing all whites, had a commanding two-point (11-1/2 to 9-1/2) lead at halftime. A Board One Texas loss with the Black side of the Sicilian, Labourdonnais-Loewenthal (Kalashnikov) variation (B32) was the big difference. The Texans were concerned but not alarmed. Under the match rules, Texas would retain its title and the trophy if there was a tie. With all whites pieces at their disposal, it was only logical things looked

promising for Texas going into the second round.

But, Chess isn't always logical. As their games ended, the players turned into spectators, checked out the active boards, then scurried off to the skittles room. There they talked about the ongoing games, wondered if their teammates could see what they saw, and quietly returned to the tournament hall and get an update. More kings started tipping over. Texas was having a really hard time. By the time only six boards remained, Jim Hollingsworth was thinking, "Come on, guys. Tie this thing up and let's go home!"

The tie wasn't happening. Oklahoma maintained its one-point lead. A Texas victory only meant an Oklahoma victory was happening on the next board. And with only three boards left, Oklahoma suddenly took a two-point lead! The mood for the Texans in skittles room was somber. It was going to take a miracle. Suddenly, 1-1/2 points were magically handled to the Texans and they could breathe a little easier. Only one game remained to be finished and a full point would ensure the tie and match title. The question every Texan's mind was, "Could that happen?"

US Chess Original Life Master Nick Schoonmaker won the Florida State Chess Championship in 1989 and 1994. And he won the Texas State Chess Championship in 2004. He nursed the White side of a Gruenfeld, 4.Bf4 (D82) into a Queens ending with outside passed pawn advantage. "Not many Texans and Okies thought Movses could

hold a draw here ..." wrote Frank Berry later after examining the 36. Qxc3 position.

"Movses" is no ordinary chess player. Some who watched him at RRSO III might even say he isn't mortal. US Chess Original Life Chess Master Movses Movsisyan won the Oklahoma State Chess Championship in 2004. He went on to win two more State titles in 2005 and 2010. He demolished his opponent's favorite line in Round One (Nick never played it since). But, he was two pawns down (both outside and passed) against the top player south of the Red River. He only needed an impossible draw.

The room now had 22 spectators hovering like vultures around Board One. With every deliberate move, one could hear absolute silence as if all had stopped breathing. Then half the crowd would scurry into the skittles room to talk quietly about what they had seen. "Wow!" was often heard. "How can they see this stuff?" Then they quietly returned and hovered until the next move.

Back and forth. Back and forth. The two warriors battled back and forth. It was a physics lesson worthy of Albert Einstein. Irresistible Force meets Immovable Object. Back and forth. Back and forth. Movses launched check after check after check. He never gave up. He never surrendered. The impossible draw transformed into the possible. After enduring 14 checks in the last 15 moves, Nick smiled, nodded his head and stuck out his hand.

"Draw?"

Tom Kusnierz was busy analyzing his game

with his opponent. So, Tom Crane made sure the Okies were not kept unnecessarily waiting. He presented the famous Traveling Trophy to Frank Berry along with congratulations on behalf of all Texans.

The annual "Victory Dinner" tradition with both teams present began that day. Hideaway Pizza was at nearby Campus Corner and everyone headed there. There was a lot of good food, laughter, new friendships, and old friends sharing stories. Pretty and friendly waitresses caused some Texans to think about moving North. Someone mentioned "I wish we had taken team photos. Maybe next year."

All good things must come to an end, even the Victory Dinner. Everyone asked for their checks. The waitresses smiled and brought them. Each was marked:

"Paid in full by Frank Berry."

Life was good.

Oklahoma 21.5 Texas 20.5

Winning Team Captain Frank Berry (1-0)  
Losing Team Captain Tom Kusnierz (0-1)

Editor's note: As all Serious Chess Players know, the REAL Red River Shootout is a series of annual team matches between the most fanatical chess players in Oklahoma and Texas. This year Oklahoma has the crown and is going for a THREE-PEAT. But, Texas leads the series 9-6 despite playing on the road year after year after year.

More info at: <http://rrsochess.net>

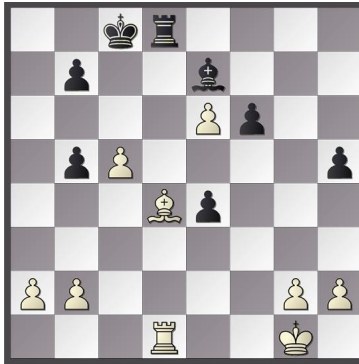
---

# Tactics Time!

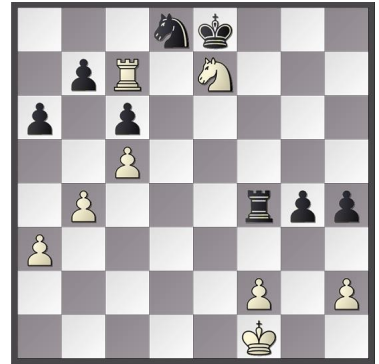
These positions came from games played in Texas or elsewhere by (at least one) Texas Player. **Answers can be found on page 18.**



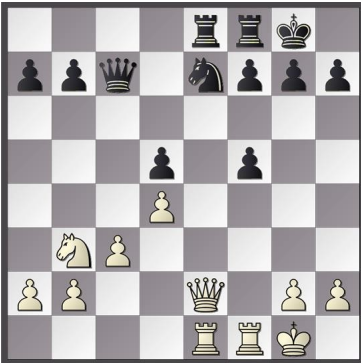
**1. Omer Reshef – Michael Brown**  
*Dallas Fall Open 2017*  
 Black to Move



**2. Thomas Kung – Srivatshav Rahul**  
*Dallas Fall Open 2017*  
 Black to Move



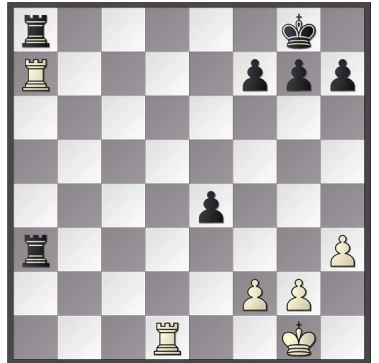
**3. Y. Kambrath – T. Stremavicius**  
*Dallas Fall Open 2017*  
 Black to Move



**4. Ruifeng Li – Akshat Chandra**  
*Dallas Fall Open 2017*  
 White to Move



**5. E. Shtembuliak – D. Raznikov**  
*Dallas Fall Open 2017*  
 White to Move



**6. Felix Aponte – Razvan Preotu**  
*Dallas Fall Open 2017*  
 White to Move



**7. Borya Ider – Titas Stremavicius**  
*Dallas Fall Open 2017*  
 White to Move



**8. Zurab Javakhadze – Advait Patel**  
*Dallas Fall Open 2017*  
 Black to Move

Available Digitally Now!!!



[www.amazon.com/dp/B014AL1FRG/](http://www.amazon.com/dp/B014AL1FRG/)





<b>Girls Under 21</b>			<b>Girls Age 15 (continued)</b>			<b>Girls Age 10 (continued)</b>		
6	Nguyen, Emily Quynh	2278	78	Gonzalez, Jolie Marie	1143	46	Hwang, Alexis	1283
20	Devagharan, Devina	2132	83	Oliveira, Lauren Ryleigh	1067	60	Milligan, Madison	1168
32	Munoz, Claudia Elizabeth	2050	88	Flowers, Ava	1037	69	Holmes, Natalie Faith	1112
45	Trakru, Priya Nikita	2008	93	Rao, Sonia	980	78	Jacinto, Gianna G	1082
53	Kao, Camille Y	1974				83	Espinosa, Sarah Elena	1060
62	Nguyen, Anh Nhu	1957	<b>Girls Age 14</b>			83	Iyer, Niyati	1060
63	Chu, Yue	1956	21	Zhou, Julia	1622	88	Gomez, Frida Mariela	1052
72	Palakollu, Samritha	1914	28	Cedillo Bocanegra, Ana Karen	1539	94	Reddy, Tanvi	1033
83	Yellamraju, Ambica	1895	34	Manohar, Riya	1506	94	Lopez, Kathya Vanessa	1033
			36	Bautista, Reyna	1470	96	Pande, Nayonika	1031
			44	Perera, Dimanthi	1409			
21	Guillen, Brianna	1552	45	Azim, Risa	1406	<b>Girls Age 9</b>		
30	Lopez, Jessica	1218	47	Salinas, Brianna Christina	1403	9	Elangovan, Ramya	1523
31	Martinez, Yvette	1188	48	Vasquez, Angelica	1401	10	Gao, Tianwen	1508
32	Moya, Savannah	1158	52	Reistle, Jane	1340	17	Sinha, Tavishi	1332
41	Mendez, Brianna A	992	56	Melgarejo, Fernanda	1307	21	McNutt, Kaitlynn Lee	1294
46	Solorzano, Roxana L	955	58	Garcia, Emily Alexis	1284	33	Seals, Ayre	1166
47	Lee Sang, Bridget	947	68	Manoj, Aswathi	1213	35	Akella, Sravya Suparna	1122
49	Gonzalez, Janeth	804	78	Basepogu, Sharon	1124	45	John, Natalie Michelle	1081
51	Alvarado, Angelica	770	80	Chaudhary, Shreya	1115	47	Milova, Vladislava	1079
56	Cruz, Sarina	654	83	Martinez, Margarita N	1081	49	Balci, Ayda	1069
60	Delgado, Samantha L	375	86	Miller, Ashlyn	1060	54	Nair, Pallavi	1053
			87	Senapathi, Shriya	1058	58	Gomez, Leeandra Marley	1041
			95	Krishnan, Aashika	1003	73	John, Ashley Danielle	959
			99	Trevino, Rianna R	993	85	Cantu, Emma Grace	889
						86	Camacho, Kaitlyn	888
			<b>Girls Age 13</b>			88	Alanis, Juliana Cristina	887
9	Palakollu, Samritha	1914	6	Nguyen, Anh Nhu	1957	91	Back, Iliana	860
13	Abella, Clarissa Louise	1834	12	Ayinala, Shree	1844	93	Villarreal, Rebecca A	855
17	Zheng, Christine	1784	16	Gunukula, Renee	1260	97	Vela, Arely	838
37	Salazar, Lillian	1473	6	Flores, Madelyn A	1213			
44	Solis, Crystal Marie	1245	12	Morales, Rhea	1205	<b>Girls Age 8</b>		
48	Guillen, Sarai A	1221	71	Madhugiri, Shruthi	1149	3	Li, Rachael	1793
58	Salinas, Arianna Dolores	1104	79	Hernandez, Madelyn	1132	21	Parajulee, Aditty	1145
60	Morrison, Nicole Leigh	1090	80	Deora, Saaniya	1130	29	Cruz, Vivica	1048
62	Reed, Ambriette D	1064	89	Castillo, Isabella Deanda	1114	33	Hosur, Sanmita	996
65	Hale, Abbie	1017	90	Basepogu, Sarah	1089	35	Caldera, Sophia	950
67	Capetillo, Emily	1008	91			45	Fat-Anthony, Raichelle	864
75	Gorecki, Maria De La Luz	810	93			51	Contreras, Rosario Nayeli	831
77	Crossman, Jennifer Love	795	97			53	Alejandro, Sofia I	820
87	Wallace, Ashlyn	603				57	Yong, Evelin	796
89	Hurtado, Mariana Veronica	563				58	Gutierrez, Victoria Angelique	795
			<b>Girls Age 12</b>			66	Leal, Madison	709
			3	Yellamraju, Ambica	1895	72	Chavarria, Faith	698
			7	Yellamraju, Aparna	1770	80	Gomez, Nelly Daniela	687
2	Devagharan, Devina	2132	29	Binoj, Gaayathri	1477	82	Garcia, Karina V	682
8	Trakru, Priya Nikita	2008	46	Aggarwal, Manika	1375	93	Rodriguez, Jayden Ella	637
11	Kao, Camille Y	1974	49	Padilla, Karlee	1367			
22	Qureshi, Sadia	1736	67	Balderas, Ana Luisa	1219			
33	Zhu, Yining	1543	67	Wang, Catherine	1219			
34	Garza, Ariel Francis	1526	71	Ghatti, Saisneha	1200			
35	Bhat, Puja Prashant	1514	75	Babaria, Rajvi Rakesh	1195			
39	Le, Tu	1481	82	Braun, Peyton Alexandra	1157			
55	Cervera, Maria B	1164	91	Han, Wenjing	1091	8	Zhang, Sunny	1240
57	Flores, Victoria I	1151	92	Dasagi, Aakanksha	1088	12	Raghuraja, Sri Yashvi	1038
60	Delgado, Victoria E	1082	98	Delgado, Gisele Josephine	1075	24	Garza, Brithany	841
63	Hernandez, Victoria A	1069				25	Wang, Crystal	840
68	Castillo, Julianna Deanda	1021	<b>Girls Age 11</b>			30	Barba, Isabella	790
76	Harris, Rachele	932	13	Chennuru, Anshu	1566	31	Nair, Aditi	783
77	Reyes, Amelinda A	913	19	Furman, Jessica	1480	37	Penk, Kaylin	752
83	Chryst, Bailey	860	27	Naidu, Suchitra	1402	38	Yu, Karina	749
86	Voliber, Alyssa	790	33	Solis, Natalie	1332	55	Ramirez, Isabella	619
92	Hipolito, Anateresa	677	40	Pulido, Emma Rose	1293	58	Lopez, Celeste Catalina	608
96	Tamosaitis, Wynter	521	50	Hernandez, Sarah	1235	59	Milova, Elizaveta S	603
			56	Bandaru, Tanvi	1219	62	Liguez, Emma	587
			61	Athila, Akshaya	1192	62	Salinas-Luebbert, Regina	587
3	Nguyen, Emily Quynh	2278	69	Nitturi, Rajni	1135	67	Yu, Amanda	581
31	Bao, Yuliang Eunice	1693	72	Vasquez, Izabel Amparo	1127	72	Loredo, Isabellah	560
36	Cheng, Angela	1608	75	Duggirala, Bhavyashree	1107	73	Castillo, Leah I	557
53	Murgulet, Ioana	1373	96	Cardin, Maddie	1023	78	Leyva, Tamil	523
55	Bautista, Ilse V	1355				79	Guerra, Anahi D	522
63	Ravichandar, Shreya	1240	<b>Girls Age 10</b>			84	Gracia, Emma C	514
64	Boren, Isabel	1236	14	Wang, Kalia Yuke	1553	88	Schroeder, Tessa	509
65	Tovias, Lauren	1228	24	Balaji, Sai Sangeetha	1455	91	Nguyen, Amy	492
72	Solis, Gabriela	1195	32	Ham, Emily	1395	94	Ku, Chloe	466
73	Babaria, Niyati Rakesh	1193	38	Uviedo, Violette	1355	97	Elizalde, Vida	457
76	Santana, Sol Celeste	1156						

## Tactics Time! Answers

### Answers:

1. **12...Qxf2+ 13.Rxf2 Re1#** Variation from the game.
  2. **30...Rxd4** and if **31.Rxd4 Bxc5** pinning the Rook to the King. Variation from the game.
  3. **35...Rf7** pins and wins the White Knight.
  4. **19.Rxf5 Nxf5 20.Qxe8** wins a pawn. Black cannot recapture because of **20...Rxe8 21.Rxe8#**
  5. **31.Rd1** traps the Black Queen. Variation from the game.
  6. **25.Rxa3** and Black cannot recapture because of **25...Rxa3 26.Rd8#** Variation from the game.
  7. **20.Ng5** forks the Queen and Bishop. Variation from the game.
  8. **32...Rg8** pins the Queen to the King. Variation from the game.
- Cover. 53.Bc5+** forks the King and Knight.

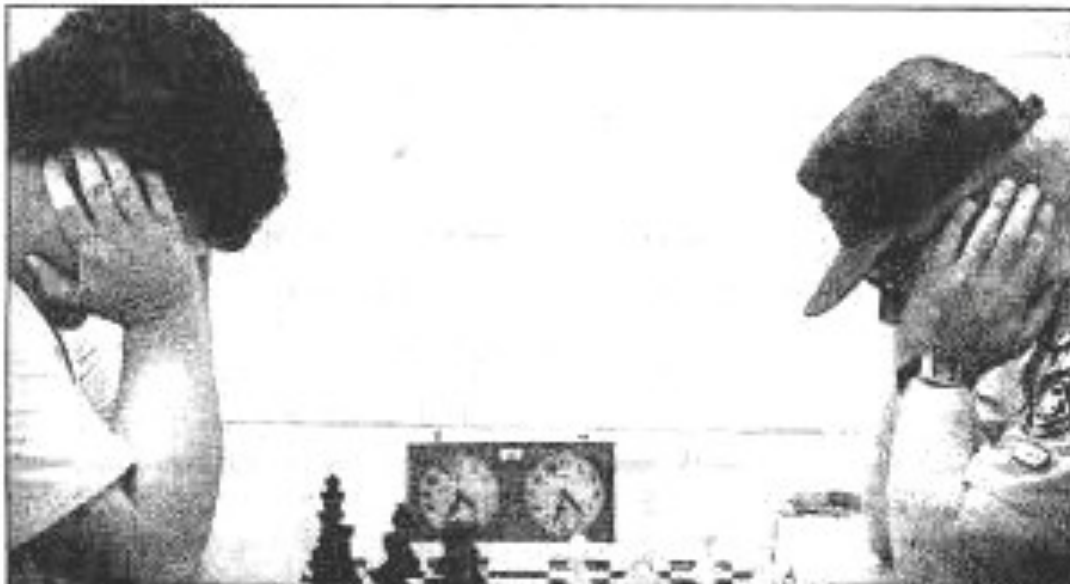
Want more original chess tactics from real games like these? Get Tactics Time delivered straight to your e-mail mailbox for FREE! Sign-up at [tacticstime.com](http://tacticstime.com).

## Texas Chess HISTORY

### Move Pondered

## Texas Chess HISTORY

Teddy Neighbors (left) battles Jim Hollingsworth (right), a Serious Texas Chess Player, at the 1990 Lawton Oklahoma City Championship. Jim, also a Boy Scouts volunteer, had to rush from a Scouting event to arrive in time for the first round.



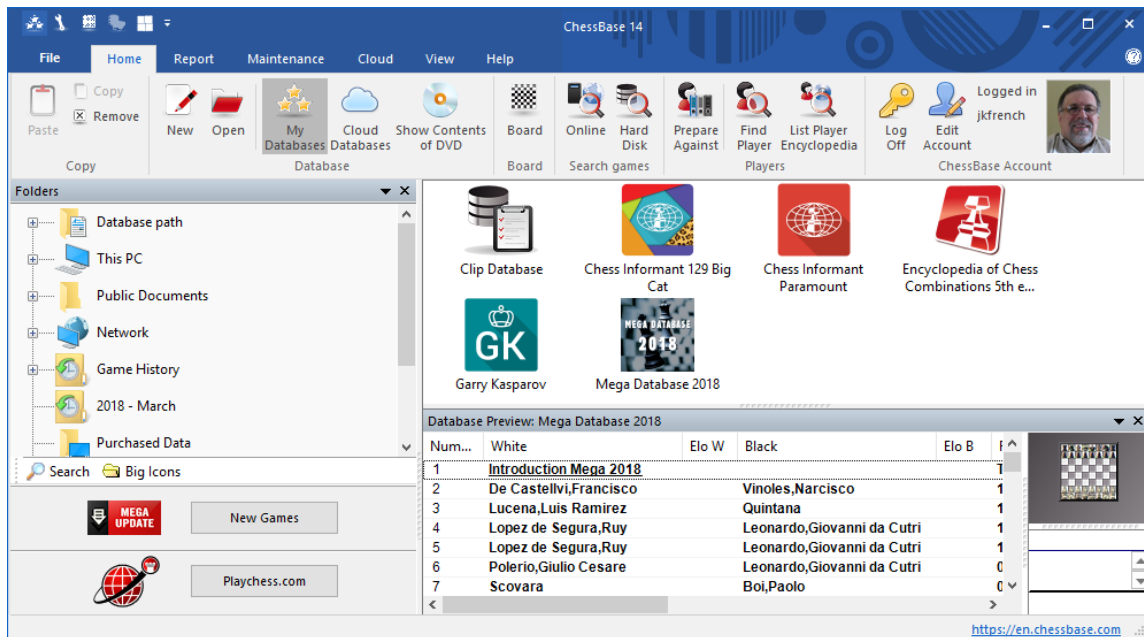
Wesley Roberts/1997

Teddy Neighbors of Fletcher, left, and Jim Hollingsworth of Lawton ponder their moves Saturday during first round action of the city championship tournament. The tournament, held at Fort Sill Caisson Recreation center, is sponsored by the Lawton Chess Club and Zale's.

# Custom ChessBase Database Icons

by Jeff French

ChessBase databases have icons. They can be from a selection of the icons available when changing the properties of the databases, or they can be custom icons that the database provider has created for them. For example, if you look at the main screen when I launch ChessBase 14, you will see this:



Every single database (other than the Clip Database) has its own *custom* icon provided by the distributor of the database. So, as you can hopefully imagine, it's possible to create your own custom icons for use in other ChessBase databases. Please NOTE: This does NOT work with PGN databases, you will need to convert your PGN databases to ChessBase (CBH) databases. Simply right-click on the PGN database and select the option to 'Convert to CBH Format...', you will also be asked if you want to delete the PGN database ... that is your choice ... but keep in mind, you will have two databases if you keep the PGN database. Regardless, the new database will be named whatever the PGN database was, but it will also be post-fixed with (CBH). You can easily change the name by right-clicking on the database and selecting Properties. From the same dialog for name changes you can also select a type of database which will give you a *built-in* icon. But those aren't Custom Icons. So, let's get down to the nitty-gritty of creating a custom icon for you ChessBase databases. Note: I am using Windows 10 in this article, but it shouldn't matter.

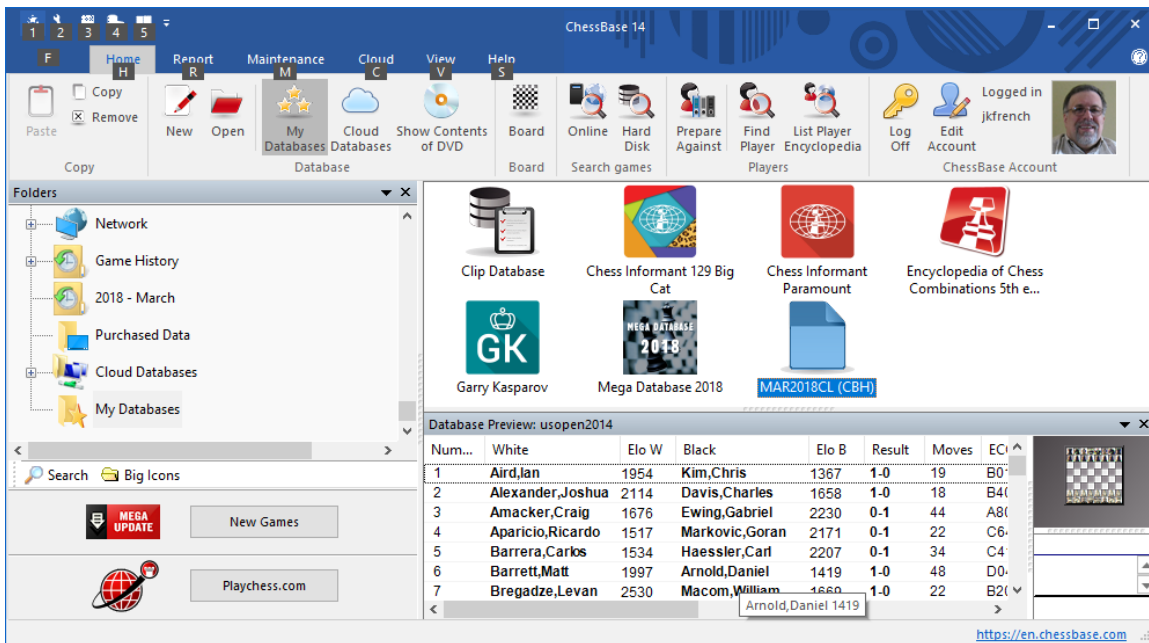
First, here's what you will need:

1. ChessBase ... if you don't have ChessBase (or ChessBase Reader), this article is of no use to you.
2. An Image editor. I use Paint.net, it does what I want, and it's free.
3. An internet connection. I use a free Icon Image Conversion Service to convert images to icons.

Also, here are a couple things to remember:

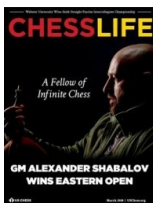
1. Icons will be stretched in ChessBase if they are not square, so we are going to make sure the images we use for the icons are square.
2. We can have transparent areas in the icon (so, for example, if we have a book or magazine database, we can make the icon square, but still have it look like the book or magazine cover by using transparent areas on the left and right sides (or top and bottom) of the icon).
3. Custom icons really enhance the user experience in ChessBase (well, I guess that's an opinion, but to me, they do).

So, as you can imagine we need a ChessBase database and an image to use as a database icon. If you are a member of the USCF, you have access to PDFs and PGNs of recent issues (and not so recent issues ... going back over 10 years). So, I went and grabbed the PGN and an image of the latest issue of Chess Life (March 2018 as of this writing) to use as an example. On the main page of USChess.org, I scrolled down the page, and found the front cover image (just right-click on it and 'Save' it). USChess.org doesn't provide ChessBase databases, we will create our own from the available PGN files). I now have the image and the PGN file. I've loaded the PGN database into ChessBase 14 and converted it to a CBH file.



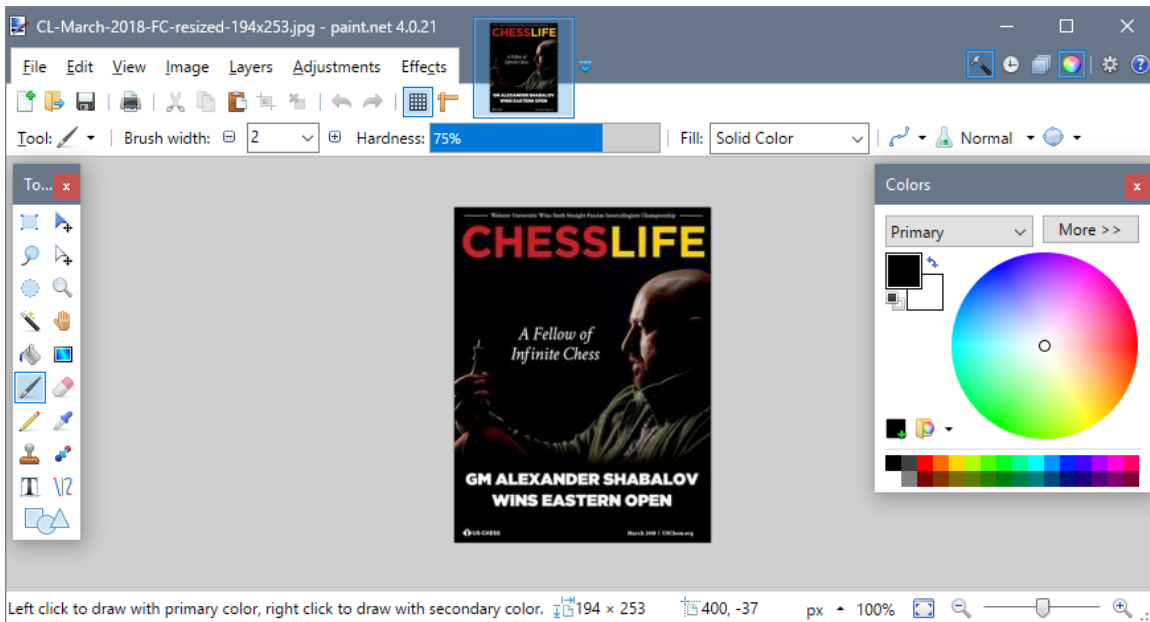
The screenshot shows the ChessBase 14 interface. On the left, a 'Folders' pane displays a tree structure with 'My Databases' selected. The main area shows a grid of database icons, including 'Clip Database', 'Chess Informant 129 Big Cat', 'Chess Informant Paramount', 'Encyclopedia of Chess Combinations 5th e...', 'Garry Kasparov', 'Mega Database 2018', and 'MAR2018CL (CBH)'. At the bottom, a 'Database Preview: usopen2014' window displays a table with chess game data.

Num...	White	Elo W	Black	Elo B	Result	Moves	EC
1	Aird,Ian	1954	Kim,Chris	1367	1-0	19	B0
2	Alexander,Joshua	2114	Davis,Charles	1658	1-0	18	B4
3	Amacker,Craig	1676	Ewing,Gabriel	2230	0-1	44	A8
4	Aparicio,Ricardo	1517	Markovic,Goran	2171	0-1	22	C6
5	Barrera,Carlos	1534	Haessler,Carl	2207	0-1	34	C4
6	Barrett,Matt	1997	Arnold,Daniel	1419	1-0	48	D0
7	Bregadze,Levan	2530	Macom,William	1660	1-0	22	B2

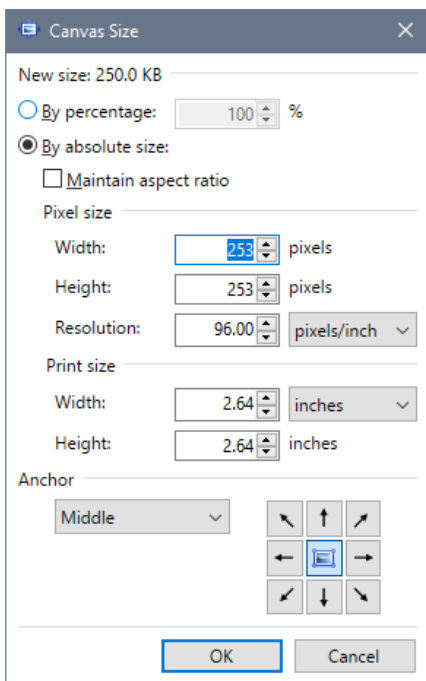


As you can see, the default icon for a converted PGN database isn't anything special. In fact, it's really kind of boring. Now I'm going to use Paint.net to convert an image of the issue cover to one that can be used as an icon for the database. I am going to use the image at the left (again, captured from the USChess.org website). Keep in mind, you can use whatever image you desire. They call them *personal* computers for a reason! So make it personal! In reality, the image is a bit dark. But, it is the issue's cover.

Now we load the image into Paint.net (or whatever image editor you are comfortable with). Follow along with me using Paint.net so you get an idea what needs to be done, you might find the image editor you use doesn't have some of the features needed). I've loaded the image into Paint.net:



Left click to draw with primary color, right click to draw with secondary color. 194 x 253 px 400, -37 100%



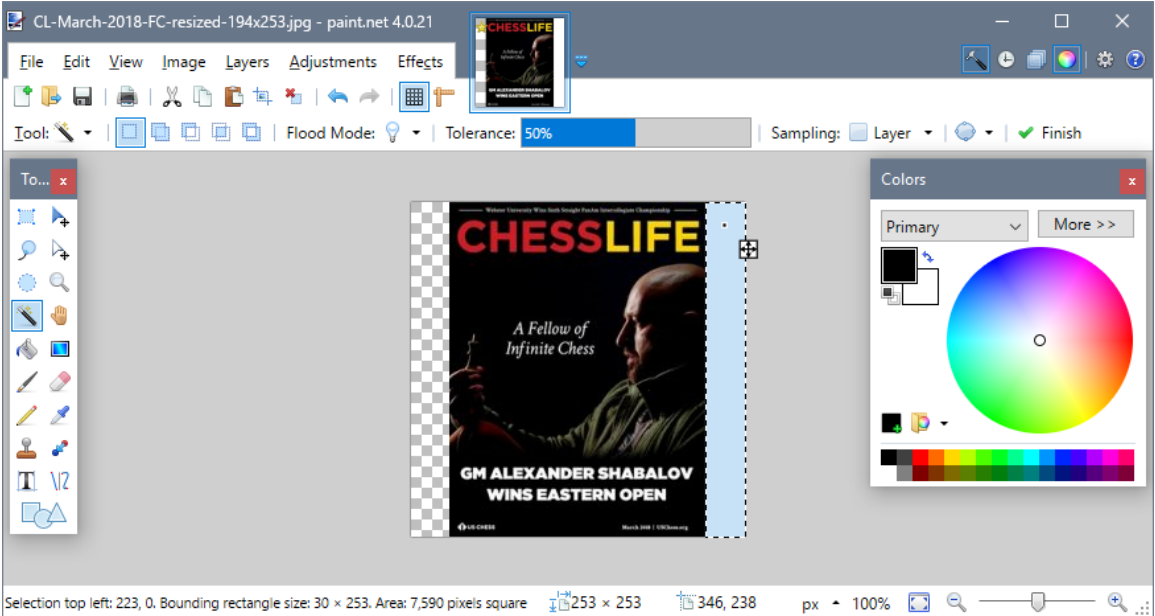
The first thing we want to do is make the image square without stretching the image. So, select the Image menu and then selected the Canvas Size... option. The Canvas Size window (left) will be displayed. We want to make sure the Width and Height are the exact same values (a square) and we want them both to be the larger of the two values.

This image currently has a Width of 194 Pixels and a Height of 253 Pixels. Pixels are just the number of 'dots' that make up the Width and Height of an image. To make it a square, we will change the Width to 253 Pixels.

In addition, we also want the Anchor to be in the middle. What this means is the image will be centered on the canvas when the canvas size changes. You can either select 'Middle' from the drop down control or you can just press the middle of the nine buttons. Regardless, we want the image that looks like a photograph in the middle.

Press OK. The image should now have white areas on the left and right of the image (since the cover is taller than it is wide).

Now we are going to make those white areas transparent. We do this to support different color themes in Windows. It won't matter what theme you use if the areas are transparent, the background color that the icon resides on will show thru (because if the background isn't white, the white areas wouldn't look right). The Magic Wand tool in Paint.net will allow us to easily select an area of the image. We need to select each area (left-click with the Magic Wand), delete the white area (press Delete, or Del on the keyboard) and those areas will be transparent (look like Chess board squares). Below, the left area is transparent, the right area was selected with the Magic Wand (again, selected by clicking in the area) and is waiting for me to delete the white area, making it transparent.



Once both areas are transparent, all we have to do is save the image. It's best to save the image as a PNG file (don't confuse with chess PGN database files) so that we keep the transparency settings. So use the File menu's Save As option (otherwise it will just overwrite the .jpg file) and select the PNG file type.

## ICO converter

ICO converter is a simple online .ico image converter. It will take any image and convert it to ICO file, for web site favicon or Windows applications.

**Image file**  
 PNG, JPEG, GIF, BMP, etc. must be less than 4 Mb. Square aspect ratio recommendand.

Choose File

**Sizes**  
 A single ICO file can store multiple resolutions.

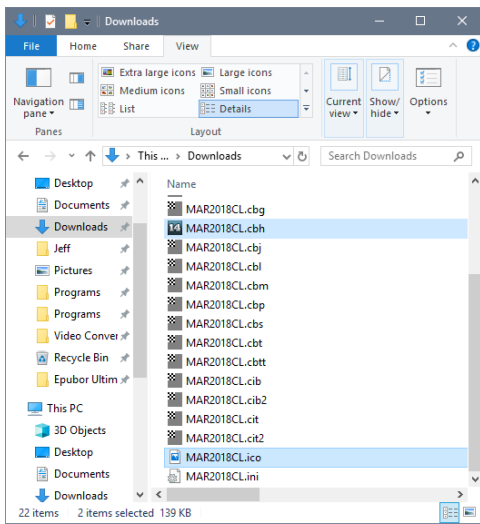
- 16 pixels
- 32 pixels
- 48 pixels
- 64 pixels
- 128 pixels
- 256 pixels (only works with 32 bits)

**Bit depth**

- 8 bits (256 colors, palette)
- 32 bits (16.7M colors & alpha transparency)

We're done with Paint.net, so you can close it. The next step is to get the image converted into an icon (an ICO file).

I like to use the [www.icoconverter.com](http://www.icoconverter.com) website (see left). It's free, it's easy and it works very well. Just press the Choose File button (select the PNG image file that was just created with Paint.net), check ALL of the Sizes (Chessbase needs them all), make sure the bit depth is 32 bits and press the Convert button. A file with the name of *favicon.ico* will be created. Make sure it is Saved (this may be automatic, depending on the Web Browser you are using).

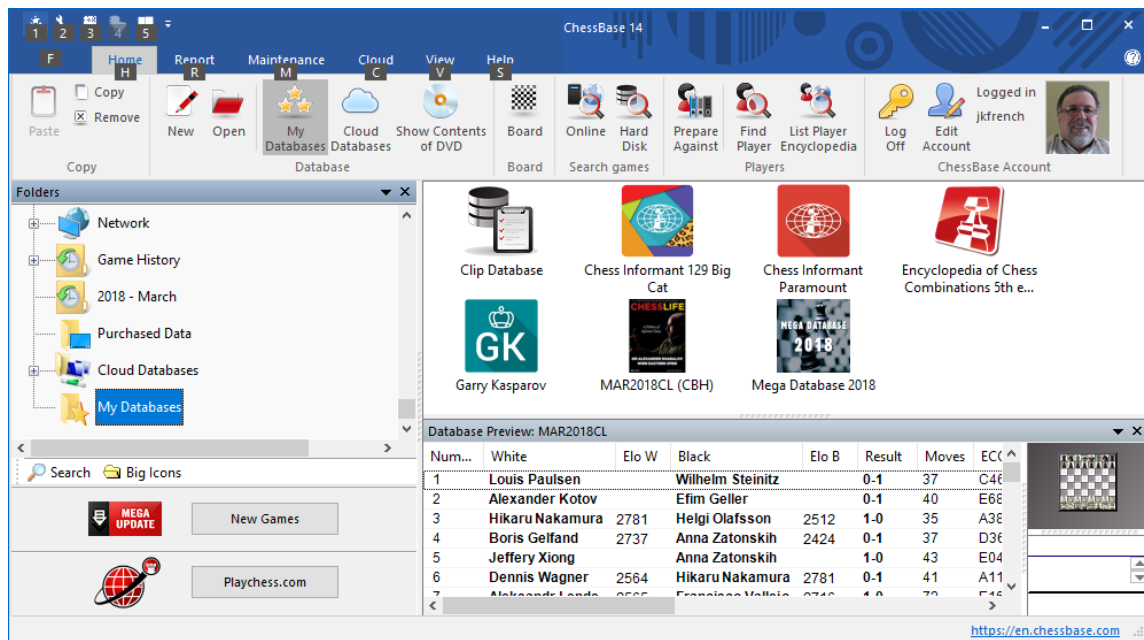


Now all we have to do is copy (move) the favicon.ico file to the same location as the ChessBase database and rename it to the same name as the other database files. In this case my icon file name needed to be *MAR2018CL.ico*.

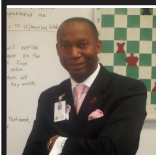
After you have the Custom Icon file in the right location and the name is correct, the ChessBase icon displayed will be the new custom icon (if it's not, just click on the database icon, if it's still not, make sure the icon is named properly. The name must be the same as the CBH file, and a lot of the other files). If you decide you don't like the icon, just delete the ICO file and the default icon will return.

One of the nice features of using custom icons is that if you make a backup (a CBV file) of your database, the custom icon (ICO) file will be automatically included in the backup.

You have now learned how to create Custom Icons for ChessBase databases.



I have converted the PGNs and made Custom Icons for all of the *Texas Knights* issues that I have edited (you can download the PDFs and PGNs on *TexasChess.org*) and all of the available *Chess Life* magazines (by loading the PDFs, changing to full screen, performing a screen capture and then I just paste into Paint.net). I have created custom icons for *American Chess* magazines (they provide ChessBase databases, if subscribed), many Chess books, and even my rated games database. Custom Icons not only bring pizzazz, but indicate what the ChessBase databases contain. I recommend that you give them a try.



## Coach's Corner - e4!

### In, Up or All (What are You Willing to Give to Win)

by Robert L. Myers

"You can't reason with a tiger when your head's in his mouth!!! "So, I'm 35K feet in the air traveling at 685 mph land speed, with 15 hours of flight time ahead of me. What to do, what to do? Well, I could grade papers. Hah! Like that's going to happen, it's spring break. Why did I even bring term papers? I could do another 300 tactic chess puzzles. My rating is 2780 now, insert a slight smirk here. I know, I could sleep but then I've been asleep for 8 hours to prepare for this trip to Japan. The array of in-flight movies to The Land of the Rising Sun is vast. I could watch Ben Affleck's, The Accountant again. "The accountant, like a CPA accountant? Not quite" my favorite line from the film. (I love film The Accountant possibly because the Accountant played chess with Francis his roommate in a maximum-security prison after being sent to Fort Leavenworth). You know, I thought I could watch the entire Star Wars franchise movies, then Suburbicon, Bladerunner - 2049, Toy Story, Murder on the Orient Express, Roman J. Israel, Esq., Lucky Logan or a myriad of others. However; the one I chose among others was simply fascinating. Darkest Hour. If there has ever been a movie that is absolutely about chess that isn't about chess at all, this is it. In the film Darkest Hour, Winston Churchill played vicariously by Gary Oldman, makes his best chess moves with perfect play out maneuvering the opposition at every move. The negotiating with a tiger line he blurts in a rage is a classic and will be quoted by parents and millennials alike for years to come. Moviegoers will remember the fascinating line, "Lost causes are the only ones worth fighting for."

I was playing a game against one of our strongest chess coaches from Baton Rouge another Chess Academy franchise and I had gotten myself into a

pickle as it were. I was down two pawns and in a terrible position. It seemed hopeless, but I remembered reading a banner on the entryway of a stairwell at the Texas State Regional Championship, "Give in, Give up or Give it All You've Got." It's not so terrible losing to someone you admire but a very painful loss to an obnoxious jerk hurts. This guy is really nice and a very strong player and I was already losing so I thought what's the worst thing that could happen, lose worse or maybe get a draw? So, I decided to give it my all. No one likes to lose at chess and especially to a co-worker that will brag for years to come. Oh, I could hear him now, "I beat a Level V Certified Master Lifetime Chess Coach." Note to self, never play chess on mobile devices while driving. This causes bad moves which result in bad chess. I was playing Black and my back was against the wall. It was as if I was in the film Dunkirk and the order, "Every man for himself and God for us all" has been given. You can never give up, never ever give up in chess nor in life, no matter how bleak the game looks. "The movie captures Churchill's uncouth and complicated personality – his heavy drinking, his irascible personality – while revealing him to be the right man in charge at the exact right time." That is the difference between the average chess player and the exceptional player. The difference between the two is the greats do what the average can't. The average give up, quit or give in and the greats do what they must, they do the impossible when it is ABSOLUTELY impossible.

Churchill in the film says to ordinary Londoners, "You, the British people, what is your move? Is it confidence? ... If the worst came to pass and the enemy were to appear on those streets above what would you do?" Churchill says on the "tube"





*Traditional Japanese Dinner in Kimonos*

a nomenclature used by the Brits when speaking of the subway. (This scene although possible did not happen in real life but was Oscar worthy for the film and Oldman). Churchill was famous for abandoning his chauffeured comfortable ride back from meeting with his "warlords" thinking about addressing Parliament and shocks the afternoon commuters on the subway speaking to them about their wishes to fight the war machine of the Germans.

I thought of my game on my flight, my opponent sitting there awaiting my move. He's pushed his Queen to my 7th rank. He's breathing down my neck and it is very uncomfortable. Just at that time in the film, the words of Thomas Babington Macaulay were uttered in my headset, "And how can a man die better than facing fearful odds, for the ashes of his fathers, and the temples of his gods?" Regular folk were surprised to see the Prime Minister with cigar in hand on the tube. Churchill shares with them that yes, the Prime Minister rides the tubes, asks each in the car what their names are and queries what would they do regarding the British fight against Nazi Germany. Each one with a bold and steadfast determination says that they would "never" give in. This prompts his most powerful and daring speech, "We shall defend our island, whatever the cost may be, we shall fight on the beaches, we shall fight on the landing grounds,

we shall fight in the fields and in the streets, we shall fight in the hills; we shall never surrender." Churchill would talk to ordinary people, to find out what they were thinking. There is absolutely no record of Churchill speaking to working-class folks sitting on the subway but it makes for a great Saturday at the theatre or several hours en route to Tokyo.

The Chess Academy was in London last year when the Christopher Nolan film, Dunkirk was premiering, and the Royal Family was scheduled to view the film about heroic volunteers that used their personal vessels to save the thousands of Great Brittan's soldiers surrounded at Dunkirk. The day we passed the movie site near Picadilly Square security was very tight. We didn't get a chance to see the film. It wasn't set to be released in the States until much later. The Chess Academy did, however, play great chess against London's Finest, rode the tube from Brent Cross Station to Westminster Abbey, passed by Parliament, caught a spin on The London Eye, watched boats float down the Thames River, took in the Crown Jewels at The Tower of London and topped the afternoon off with fish and chips. I really wanted to see the underground bunkers where Prime Minister Winston Churchill stood outside 10 Downing Street, gesturing his famous 'V for Victory' signal in June of 1943 and where the film was shot. The film Dunkirk focusses on the same time frame of Darkest Hour but from the perspective of the Prime Minister as the British Army is forced the shores by the German war machine and an incredible resolve of the English people to miraculous rescue their army. In chess, there are times when you may need a miracle. On the 33rd move of a 66-move game my miracle came. Using the opposition technique, I overcame a seriously horrible position.

It is unfortunate in this political climate that when my teams travel globally, the assumption is we play something that involves a ball. When the query is answered, "Chess" inquirers are usually shocked and surprised. Then there are more queries and

amazement. It appears that it is inconceivable that we could travel the world, stay in 4 and 5-star hotels and defeat other countries with low-income students from America. The myriad of components that have propagated our success is that chess is an interactive, mind-expanding tool for teaching people how to think critically, analyze deeply, and solve problems effectively to better train and develop the human mind to reach its maximum potential, used by schools to help teach effective decision-making, foster self-esteem, enhance concentration, promote academic success. It is a Rubik's Cube, wrapped in an enigma, a puzzle, a maze, riddled with queries and so are we.

On this last excursion to Japan, we were 6835 miles away from home and we wrestled with a Sumo wrestler among other things. Do you know what it's like to wrestle a 450 lb. sumo wrestler? I took the challenge with 田代 良徳 Yoshinori Tashiro, a Professional Sumo Wrestler in Tokyo, the largest city in the world with 14 million occupants. This guy is massive. Super nice, very funny and friendly but not so much in the sumo ring. The best sumo wrestlers make more than superstar NBA players. The top guys can make upwards of 500K a month not counting endorsements from advertisers like McDonald's, Honda and others. As sumo wrestling is huge in Japan. The most popular sport in the entire country. 田代 良徳 Yoshinori Tashiro showed us one of his ads seen on billboards all over Tokyo. We later visited the statue of Tokyo's most famous dog, Hachikō. This Akita dog came to Shibuya Station every day for 10 years waiting for his master, a professor, that died at work. That is a give it your all attitude. Loyalty in its highest form. It is a never give up, never surrender determination that says, "I'm faithful for the cause." The statue erected in the dog's memory in front of Shibuya Station across from Shibuya Crossing, the busiest crosswalk in the World. An average of 2,500 people cross every 3.3 minutes every day. The surrounding plaza is Tokyo's most popular rendezvous point and

is always popping. It's almost suicide attempting to cross Shibuya Crossing. Two cats are hanging out under Hachikō, probably the safest place to be in this crowded plaza. I recall August 2017, on top of the Arc de Triomphe, in Paris overlooking The Avenue des Champs-Élysées and the surrounding circle. That view can only be seen by taking 8 flights of stairs to the top of a spiral staircase inside the Arc. Crossing that street is almost as insane as Shibuya Crossing in Tokyo, Japan. We ran into Darth Vader and a Stormtrooper, neither one of them plays chess, which clears up why the Death Star was blown up. We visited the Beautiful Golden Pavilion, Juan ate real sushi, Jasmine imitated a ninja, spent some time with Asimo the incredible Honda robot, we walked through the beautiful Fushimi Inari Shrine with over 10K gates. A fellow traveler caught a special moment with me and my son as we were captivated by the awesomeness of mystical Mt. Fuji. I will always remember that moment. Only one word describes it adequately, WOW!!! According to Trip Advisor, "Hakone



*The Great Buddha*

Ropeway is the best way to view Mt. Fuji. Take the cable car from the base station by Lake Hakone up to Owakudani, not the other way around. This allows Mt. Fuji to appear gradually from behind the mountains surrounding the lake and also permits you to walk back down to the bottom - a sensible arrangement! If you can get there early you may even be lucky enough to have a cable car to yourself - and in the morning, you are looking West towards Fuji, so it's in the sun." It's a spectacular view and truly shows how minuscule we are. Cable cars run every 20 minutes. When they are very busy the cars run every 10 minutes and of course you can buy items at the gift shop." Students were immersed in the full Japanese culture experience sleeping on mats, dressing in full yukata (浴衣) a Japanese garment, a casual summer kimono usually made of cotton or synthetic fabric, and unlined. And, I said that I'd NEVER eat sushi. Never say, "Never." I ate sushi dinner and loved it, in customary traditional Japanese attire. As Bruno Mars says in his latest hit song Finesse, "We're just dripping in finesse, it don't make no sense. We're out here dripping on 'em..."

Chess fans, "Success is not final. Failure is not fatal. It is the courage to continue that counts", Sir Winston Churchill. Neither my Mom nor Dad played chess but had the chess principles down to a science. Dad told me a contradictory statement of that of my Mom. He said, "Storms come in our lives to make us stronger." She said, "Storms come in our lives to destroy us. That's their job to destroy. It is how we respond in those times of difficulty that either develop or destroy us." The infamous poem by the unknown author should encourage all chess players when faced with a difficult position.

*"When things go wrong, as they sometimes will,  
When the road you're trudging seems all uphill,  
When the funds are low and the debts are high,  
And you want to smile, but you have to sigh,  
When care is pressing you down a bit -  
Rest if you must, but don't you quit.  
Life is queer with its twists and turns,*

*As every one of us sometimes learns,  
And many a fellow turns about  
When he might have won had he stuck it out.  
Don't give up though the pace seems slow -  
You may succeed with another blow.  
Often the goal is nearer than  
It seems to a faint and faltering man;  
Often the struggler has given up  
When he might have captured the victor's cup;  
And he learned too late when the night came down,  
How close he was to the golden crown.  
Success is failure turned inside out -  
The silver tint in the clouds of doubt,  
And you never can tell how close you are,  
It might be near when it seems afar;  
So stick to the fight when you're the hardest hit -  
It's when things seem worst that you must not quit."*

So, when in a terrible position in chess or in life don't give up. Sun Zu in The Art of War says, "Appear weak when you are strong, and strong when you are weak." "The supreme art of war is to subdue the enemy without fighting." "If you know the enemy and know yourself, you need not fear the result of a hundred battles." "Every battle is won or lost before it's ever fought."

Prime Minister Winston Churchill had it right when he was arguing the point of not surrendering, not quitting and fighting until the bitter end, "You can't reason with a tiger when your heads in his mouth!!!" So what are you going to do? What is your move? Give in? Give up? Or, give it all you've got? I choose the latter.



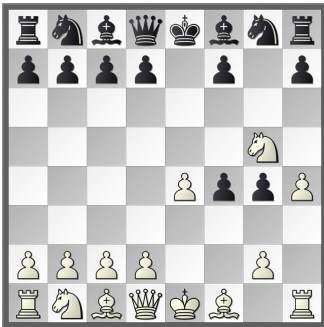
Sumo Wrestler 田代 良徳 Yoshinori Tashiro

**Editors Note:** For this issue Coach Myer's sent a game for us to evaluate. So, to get us started, I've put it through a *Fritz 16* analysis. Remember all games in this issue (including this one) are available on *TexasChess.org* on the *Texas Knights* page.

## Really Nice Guy – TCAKNIGHT [C39]

[Tactical Analysis 2.10 (10s)]

1.e4 e5 2.f4 exf4 3.Nf3 g5  
4.h4 g4 5.Ng5



d6 [0.39/20]

[5...f3!± -0.80/19 6.Bc4 (6.gxf3 f6) 6...d5 7.Bxd5 h6 8.Bxf7+ Ke7]

6.Bc4± Be6 [1.61/20]

[6...Nh6= and Black has nothing to worry. 0.14/17]

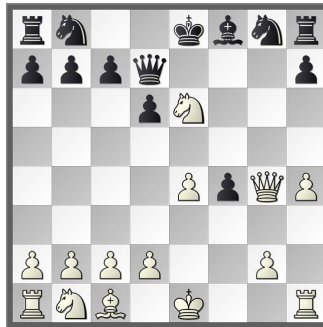
7.Bxe6+- fxe6 8.Nxe6 [White is clearly better.]

8...Qd7 9.Qxg4

[And now Nc3 would win.]  
[See Diagram]

9...Nf6 10.Nxc7+? [-1.40/22]

[10.Qf5± stays on course. 1.56/20 10...Ke7 11.Nxf4]



After Black Move 9

10...Qxc7± 11.Qe6+ Qe7

12.Qf5 [-2.51/16]

[12.Qxe7+± was called for. -1.48/20 12...Bxe7 13.d3]

12...Nxe4? [-0.61/15]

[12...Nc6!+- -2.51/16 13.Qxf4 Nxe4]

13.Qh5+? [-2.82/13]

[13.Qc8+± -0.61/15 Kf7 14.0-0]

13...Qf7 [-1.24/22]

[13...Kd8+- Strongly threatening ...Ng3+. -2.82/13 14.Qe2 Ng3 15.Qxe7+ Bxe7]

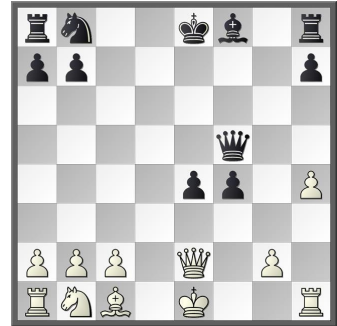
14.Qe2 d5 [0.06/21]

[14...Qe6± Threatens to win with ...Kd7. -1.17/20 15.Nc3 Nc5]

15.d3= Qf5 [0.95/22]

[15...Nc6= 0.05/19 16.dxe4 0-0-0]

16.dxe4± dxe4



[White must now prevent ...Nc6.]

17.Nc3 [0.76/15]

[△17.Rf1! 1.21/21 Bd6 18.Nc3]

17...Nc6 18.Qc4? [-1.49/20]

[18.Qxe4± keeps the upper hand. 0.65/20 18...Qxe4+ 19.Nxe4]

18...e3 [-0.51/20]

[18...0-0-0!± -1.49/20 19.0-0 Qc5+ 20.Qxc5 Bxc5+ 21.Kh1 e3]

19.Qe4+? [-2.72/23]

[19.0-0± -0.51/20 Bc5 20.Kh1 (20.Rxf4? e2+ 21.Kh2 Bg1+ 22.Kh1 e1Q-+)]

19...Qxe4+- 20.Nxe4 Nd4 21.0-0 Bh6 [-1.55/19]



*Coach Myers and Marlon Myers, Mt.*

[21...Nxc2-+ is more deadly. - 3.72/20 22.Rxf4 e2 23.Nf6+ Ke7]

**22.c3?** [-3.20/24]

[22.Nf6+ -1.55/19 Ke7 23.Ng4]

**22...Nc2 23.Rb1 0-0-0** [Don't play 23...e2 24.Nd6+ Kd7 25.Nf5-+]

**24.Bxe3 fxe3 25.b4** [-8.41/16]

[Δ25.Ng3-5.08/23]

**25...e2 26.Rfe1 Nxe1 27.Rxe1 Rd1 28.Kf2 Rxe1 29.Kxe1 Re8** [-2.96/24]

[Δ29...Rg8 -6.47/22 30.g3 Rg4 31.Nd6+ Kd7]

**30.Nd6+ Kd7** [( → ...Bd2+!)]

**31.Nxe8 Kxe8 32.Kxe2** [Endgame KB-KP -3.65/24]

[32.c4 keeps fighting. - 2.50/25]

**32...b5 33.Kd3 Kd7 34.Kd4?** [-3.79/26]

[34.g4 is the only way for White. -2.26/24]

**34...Kd6 35.c4 Bg7+ 36.Kd3 bxc4+ 37.Kxc4 a6** [-1.95/26]

[Δ37...h5 ...Ke5 is the strong threat. -3.48/24 38.Kb5 Bd4]

**38.a3** [-2.43/26]

[Δ38.b5-1.95/26]

**38...Kc6?** [-0.05/26]

[Better is 38...h5-+ Hoping for ...Bf6. -2.43/26 39.Kd3 Bf6]

**39.b5+?** [-11.22/28]

[39.g4=-0.05/26]

**39...axb5+** [KB-K3P]

**40.Kb4 Be5** [-5.09/31]

[Δ40...Bf6 aiming for ...Be7+ -11.22/30 41.h5 Kb6]

**41.Kb3** [-10.86/30]

[Δ41.g4-5.09/31]

**41...Kc5** [-5.09/29]

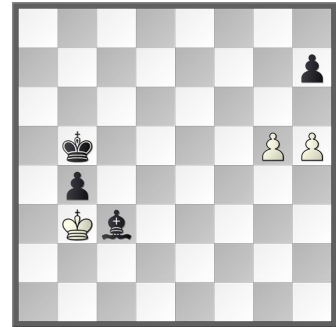
[Δ41...h5 -10.86/30 42.Kb4 Bd6+ 43.Kb3 Kd5]

**42.g4 Bd4 43.a4** [-28.29/31]

[Δ43.g5 -5.08/29 Be3 44.Kc3]

**43...b4 44.a5 Kb5 45.g5 Kxa5** [KB-KPP]

**46.Kc4 Bc3 47.Kb3 Kb5 48.h5**



**h6!**

**49.gxh6 Bh8** [Black mates.]

**50.h7 Ka5 51.h6 Kb5 52.Kc2 Ka4 53.Kb1 Ka3 54.Kc2 b3+ 55.Kb1 b2 56.Kc2 Ka2 57.Kd2 b1Q 58.Ke3 Qb4 59.Kd3 Kc2 60.Ke3 Qd4+ 61.Kf3 Kc2 62.Kg3 Qe4 63.Kh3 Kd2 64.Kg3 Ke2 65.Kh3 Kf2 66.Kh2 Qh4#**

[Precision: White = 15%, Black = 37%.]

[Δ66...Qg2#-#1/62]

**0-1**



*The Chess Academy @Chavez Regional*

# Upcoming Events

## APRIL 2018

**APR. 7 Arlington Chess Club Open #31**  
Info: <http://www.uschess.org/tlas/9252.tla>

**APR. 7 QD Academy/Parkway Chess #22**  
Info: <http://www.uschess.org/tlas/9466.tla>

**APR. 7 EPIC Fast Cash Saturday**  
Info: <http://www.uschess.org/tlas/9434.tla>

**APR. 14 Many Springs 111**  
Info: <http://www.uschess.org/tlas/9219.tla>

**APR. 14 Texas Team Championships**  
Info: <http://www.uschess.org/tlas/9305.tla>

**APR. 14 2018 Tarrant County Primary (K-3) Spring Championships**  
Info: <http://www.uschess.org/tlas/9464.tla>

**APR. 14 2018 Tarrant County 4th-12th Grade Open**  
Info: <http://www.uschess.org/tlas/9464.tla>

**APR. 14 QD Academy/Parkway Chess #23**  
Info: <http://www.uschess.org/tlas/9467.tla>

**APR. 14 Hoffmann Elementary Non-Rated Chess Tournament**  
Info: <https://www.austinchestournaments.com/events/826>

**APR. 14-15 2018 DCC FIDE Open IV**  
Info: 214-632-9000

**APR. 14 El Paso Crusader Library Chess Tournament Series**  
Info: Irving Schwartz Branch, 915.256.7783

**APR. 15 Strategem April 2018 Tournament**  
Info: <http://www.uschess.org/tlas/9454.tla>

**APR. 21 Red River Shootout**  
Info: [http://rrsochess.net/rrso\\_home.html#RRSO](http://rrsochess.net/rrso_home.html#RRSO)

**APR. 21 MLCA K-12 Classic**  
Info: <http://www.uschess.org/tlas/9153.tla>

**APR. 28 4th Annual North Texas All Girls/All Boys Championships**  
Info: <http://www.uschess.org/tlas/9465.tla>

## MAY 2018

**MAY. 5 Arlington Chess Club Open #32**  
Info: <http://www.uschess.org/tlas/9253.tla>

**MAY. 5-6 2018 DCC FIDE Open V**  
Info: 214-632-9000

**MAY. 12 Celebrate the End of School**  
Info: <http://austinchestournaments.com/files//CrusaderChessClub2017.pdf>

**May. 12 El Paso Crusader Library Chess Tournament Series**  
Info: Armijo Branch, 915.256.7783

**MAY. 19 Strategem May 2018 Tournament**  
Info: <http://www.uschess.org/tlas/9455.tla>

**MAY. 25-28 OR 26-28 73rd Annual Texas State and Amateur Championships**  
Info: See Page 31

## WEEKLY EVENTS

**APR. 1, 8, 15, 22, 29 and May 6, 13, 20 NTCA Sunday Swiss!**  
Info: [info@northtexaschessacademy.com](mailto:info@northtexaschessacademy.com)

**APR. 6, 13, 20, 27 and May 4 NTCA Classical Fridays**  
Info: [info@northtexaschessacademy.com](mailto:info@northtexaschessacademy.com)

**APR. 7, 14, 21, 28 and May 3, 10, 17, 24, 31 NTCA Thursday Blitz**  
Info: [info@northtexaschessacademy.com](mailto:info@northtexaschessacademy.com)

**APR. 1, 8, 15 Austin Chess Club G/90 +30 Swiss**  
Info: <http://austinchestournaments.com/events/833>



# 73rd Annual Texas State and Amateur Championships

May 25-28 or 26-28

DFW Airport Marriott South, 4151 Centreport Dr., Fort Worth, TX 76155

**Championship:** This section is FIDE rated and uses FIDE rules. The tournament will use USCF ratings for pairings and prize purposes. Must be rated 2000 or above regular (not quick, blitz or rapid) by either USCF or Fide to play in this section or have had a provable 2000 or higher regular rating in the past. Defending Texas State Amateur Champion may also play in this section. Texas Scholastic High School Champions (either South or North/Central) may also play in this section. Foreign unrateds may play in this section and at TDs discretion may be required to play in Championship section. G/90 with 30 sec. increment. Foreign players must disclose their FIDE ID number before 1st round in order to play in Championship section. Default late forfeiture time is one hour. TD may extend this time at TD's discretion. \$\$ 1,000-500-250, 2200-2399 \$750, U2200 \$750.

**Amateur:** U2000 & unrated. Rds. 1-7 G/90 with 30 sec increment. \$\$ 800-400-200. B \$\$ 600-300-150, C 500-250-125, U1400 \$500- 250-125, U1200 \$400, U1000 \$300 Unrated \$200. Both: TCA membership required. Other states accepted. EF: \$89 if received by 5/16, else \$99. \$80 Junior (U19) if received by 5/16 else \$90, Senior (over 65)/Handicapped/ additional family participant \$53 if receive by 5/16 else \$65. Add \$5 for CC phone entries; pre-reg. requires pre-payment. After 5/23 all registration and changes on site only; all changes including withdrawals, \$10 after 5/23. 4 day: Reg. Friday 5/25, 6:15 pm-7:15. Rds. Fri: 7:45, Sat: 2:45 pm - 7:30, Sun: 11:30 am - 5:15 pm, Mon: 9:30 am - 2:15 pm. 3 day: Reg. Sat. 5/26, 9-9:30 am, Rd. 1 at 10 am then merge with 4 day. Foreign Unrated must play in Championship section. Registrations that do not indicate 4 or 3 day schedule will be put in the 3 day. HR: \$109/109/109/109, 817-358- 1700 or 800-228-9290 reserve by 5/13 and ask for Chess rate. Rate includes breakfast for up to 4 hotel guests. Free Parking. Up to two 1/2 pt byes available if requested before end of rd. 2 and before receiving full point bye, but byes for both rounds 6 AND 7 is not permitted.

**K-12 Scholastic on Saturday, 5/26.** 5-SS, Rds. G/30 d5, EF: \$29 by 5/16, \$45 after; Pre-reg. requires pre-payment. After 5/23 all registration and changes on site only; all changes \$10 after 5/23. No refunds after 5/24, \$10 handling fee for refunds before 5/24. Registration 8:15-8:45 am, Rd. 1 at 9:30 am, rest ASAP with small lunch break. Sections: **K-12 Championship** and **K- 12 U1000**. Prizes: Trophies to top 12 individuals, top five teams in each section. K-12 U1000 also top three unrateds. Medals to those who do not win a trophy. Ent: Dallas Chess Club, C/O Barbara Swafford, 2709 Longhorn Trail, Crowley, TX 76036.

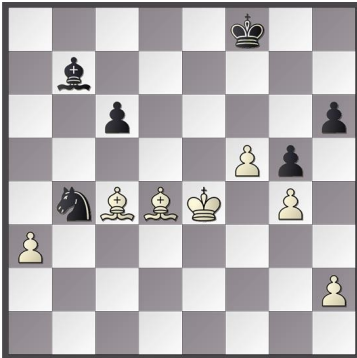
**Info:** Barb Swafford 2146329000 info@dallaschess.com www.dallaschess.com. W. FIDE.



**Editor, Texas Chess Association**  
**P.O. Box 151804**  
**Ft. Worth, TX 76108**

## **Tactics Time!**

Answer on  
page 18



**9. Y. Kambrath – H. Premkumar**

*Dallas Fall Open 2017*

White to Move