



# TEXAS KNIGHTS

Volume 65, Number 5

The official publication of the Texas Chess Association

MAY-JUN 2024 \$5

## State and Amateur Championships



*Twelve-year-old Vijay Anandh Wins State Championship*

### Table of Contents

A Message from the President.....	4
79th Annual Texas State and Amateur Championships.....	5
President’s Cup - Final Four of College Chess.....	8
New Chess Books by Dr. Alexey Root .....	10
Coach’s Corner - e4! by Robert L. Myers.....	11
World School Chess Championship 2024, Peru by Mohit Manchanda.....	12
For Tournament Directors and Organizers, Part 2 by Franc Guadalupe .....	13
Election Information.....	14
<b>Tactics Time!</b> by Tim Brennan (Answers on page 18).....	15
Leader List.....	16
Current Memberships by Jim Hollingsworth.....	18
Upcoming Events & Game Index.....	19
Endgame.....	30

# TEXAS CHESS ASSOCIATION

A 501(c)(3) Educational Nonprofit Corporation Dedicated to Promoting Chess in Texas

texaschess.org  
Facebook.com/TexasChess  
Chess.com/club/texas-chess-association

**President:** Francisco L. Guadalupe, flguadalupe@aol.com  
**Vice-President:** Darryl West, DarrylWest@live.com  
**Secretary:** Richard Garcia, richardjgarcia@sbcbglobal.net  
**Treasurer:** Barb Swafford, 2709 Longhorn Trail, Crowley, TX 76036-4719; barbound@gmail.com.  
**Editor:** Jeff French, texasknightsed@texaschess.org, <https://facebook.com/texasknightsed>  
**Assistant Editor:** We are looking for someone to fill this post. Contact the Editor for further information.  
**Website Admin:** Chris Wood, chris@handsomeweb.com.  
**Facebook Admin:** Deborah Shafer, dshaferchess@yahoo.com  
**Tournament Clearinghouse:** Lori Balkum, Lori.Balkum@austinchess tournaments.com

**Membership Dues:** You can join/renew online at [texaschess.org](http://texaschess.org) using a credit/debit card or PayPal

**Regular:** \$10. **Family:** \$15. **Non-Subscribing:** \$5. **Patron:** \$25. **Family Patron:** \$30.  
**Junior (18 and under):** \$7.50. **Student:** \$7.50. **Lifetime Regular:** \$200. **Lifetime Patron:** \$500.  
**Foreign (Canada & Mexico):** \$12.50, **(Other):** \$17.50. **Affiliate:** \$10. **Scholastic Affiliate:** \$10.  
**Blind:** \$2 (\$5 with mailed magazine). **Foreign Affiliate:** \$40.

**Ad rates:** \$50/page, \$35/half, \$20/quarter (Affiliate membership includes one quarter-page ad a year), \$1/line.  
Send payment to: **TCA Treasurer, 2709 Longhorn Trail, Crowley, TX 76036-4719.** Please provide name, address, phone # and email. **Remember:** Contributions beyond membership dues may be tax deductible.

## TCA Hall of Honor

### Lifetime Patron

Selby K. Anderson  
Thomas Boyd  
Caleb S. Brown  
Clarence Callaway, Jr.  
Carmen Chairez  
George W. Church, Jr.  
David W. Cofer  
Jack Garcia  
Austen Green  
David Harrington  
Patrick C. Long  
Harmon Throneberry  
Louis Thurston

### Patron

Raymond Feyes  
Charles Fricks  
Robert Harrington  
Sanmita Hosur  
Robert Jones  
Peter Kappler  
George Liaicono  
Carlos Lau  
David Ortiz  
James Post  
Robert Skipper  
Barbara Swafford

### Family Patron

Margaret Bailon-Labednick  
Sarah Brauner  
Thomas E. & Jo Ann Crane  
Jeff & Lonann French  
Renate Garcia  
Joshua Goldberg  
Danny & Brenda Hardesty  
James Houghtaling Jr.  
Amy Jones  
Robert L. Myers  
Douglas & Alexey Root

### Patron Online

Michael Donovan  
Gregory Lane Newman

**Contributors:** Tim Brennan, Jim Hollingsworth, Mohit Manchanda, Robert L. Myers & Dr. Alexey Root

**Cover photo:** Jim Clarke (possibly other photos too)

**Game annotations:** If not attributed, are a collaboration between the Editor and Fritz 19.



- Articles
- Games
- Results
- Photos
- Comics
- Reviews
- Affiliate News
- Region News

*Texas Chess Related Submissions Only*

**Submissions accepted by:**

Email: [texasknightsed@texaschess.org](mailto:texasknightsed@texaschess.org) - or -  
US Mail: Email Editor and request address.  
*(Please include contact information)*

**Submission Deadline:**


July 15th, 2024

Copyright © 2024 by Texas Chess Association, Inc. All Rights Reserved.

TCA Logo Copyright © 2020 by Texas Chess Association, Inc. All Rights Reserved

No part of this publication may be reproduced without the express permission of the Editor.



 [texasknightsed@texaschess.org](mailto:texasknightsed@texaschess.org)

## From the Desk of the Editor

 [Facebook.com/texasknightsed](https://www.facebook.com/texasknightsed)

Hello Texas,

Welcome to the new issue of *Texas Knights*. We are running about a week later than usual. Memorial Day week got in my way a bit. Then there were issues with Nomination and Election Dates, and I needed to make sure they were published accurately so you knew exactly what you need to do by when. That includes sending nominations, making sure you are able to vote, know the latest you can request a mailed ballot, etc. So, please take a minute to look at page 14. It provides the details that you need to know if you want to nominate, are nominated, are a voter, or even need contact information if you need additional assistance.

This issue contains details, photos, and games from the **79th Annual Texas State and Amateur Championships**. As promised, there are details, photos, and games from the **2024 Final Four** collegiate tournament.

**Tim Brennan** provides the next set of Tactics Time! puzzles, and **Dr. Alexey Root** provides a new book review.

**Franc Guadalupe** continues the *Tournament Director and Organizer* article series. **Coach Myers** continues *The Chess Top 40* article series.

I would like to point you to the top player lists and notice that our 18 year olds are dominating the top two spots in that age group. In addition, the top spot in the Age 13 group is held by a Texas player. Well done to all.

**Please note:** The last game provided was played by **FM Sharvesh Deviprasath** and annotated by him. They are from the **2024 North/Central Texas State Scholastic** that was covered in the last issue,

but were unavailable to publish. Just be aware that even though I marked it as “No Article Associated with Games,” that is only true for this issue. Check out the previous issue to find the article associated with the games. There is another game in the PGN file that ended in a draw.

I have decided that the way I share Upcoming Events, by providing details to access the *Texas Clearing House Calendar*, similar to the way I provided them in the last issue, is going to be the new standard method. It’s the best source. This provides an extra page for use. I’ve decided this will contain a column called ‘Endgame’. This page can really contain anything chess-related, but I would prefer that it doesn’t include tournaments, games, or puzzles. It is open for submissions. If I don’t get a submission for an issue, I’ll find something to put there. So, if you want to provide an ‘Endgame’ article, when you submit your article, please let me know it is for that page. For this issue, I continue our 65th anniversary celebration with a couple paragraphs from the year 1892 about the formation of the *Texas State Chess Association*. The next issue will conclude our celebration.

The next issue will include candidate bios for the election. Make sure you get them submitted by the required due date. They are optional, but they can make a difference in your chances of winning the office you are running for. Again, page 14 provides important information.

The next issue deadline (not including candidate bios, which are required earlier!) is July 15th. The next issue should be on the way to your mailbox or available on the website the first week of August. Be safe, and play chess!

— Jeff



# A Message from the President

*June 2024*

As always, the Texas Chess Association staff and I thank you for your outstanding support and love for the game of chess. Everything we do for our chess players is a team effort and your contributions are much appreciated.

**The TCA Elections** will take place this year, and the official announcement is part of this issue. Inasmuch as I will not be seeking reelection, nor will two of the other TCA officers, we have great candidates who, no matter who wins, will continue supporting this organization and making the best decisions for all Texas chess players. I appreciate the support you have given me during the last four years in which I was honored to served at the TCA President, and I encourage all voting TCA members to cast their ballots for this year's election.

As you know, about three months ago, we lost our good friend Luis Salinas. For many, many years, Luis was the President of the Dallas Chess Club and the Assistant Director of the Chess Program of the University of Texas at Dallas. All of us are going to miss him tremendously! In honor of his memory, this year's most important state event was named as the **Luis Salinas Memorial 79th Annual Texas State and Amateur Chess Championships**. At that event, held at the DFW Airport Marriott South, May 24 - 27, 12-year-old **Vijay Anandh**, now rated 2192, became the Texas State Champion! I believe that Vijay is the **youngest State Champion we have ever had!**

Congratulations Vijay! This issue contains standings and many games from that event and, of course, Vijay's picture is on the cover. In addition, the TCA website contains an article and many pictures of the event, as does the TCA Facebook page.

Congratulations also to **FM Eric Liu** (US Chess rated 2455!) from Texas, who finished as 2024 National Middle School Champion at the event held in Atlanta, Georgia, May 10 - 12! Congratulations Eric! Lastly, a reminder that five Texans will represent us at the **US Chess National Invitational events, July 27 -30, in Atlanta, Georgia!** Once again, these five players are **Scott Elliott** (Irwin National Tournament of Senior State Champions), **Sharvesh Deviprasath** (Denker National Tournament of State High School Champions), **Ellery Zhang** (Haring National Tournament of Girls State Champions), **Eric Liu** (Barber National Tournament of Middle School Champions), and **Oscar Zhang** (Rockefeller National Tournament of State Elementary Schools Champions). You can follow the progress of our champions on the US Chess website. Good luck to them!

There is much more included in this issue, so please read on! Thanks again for your support for this organization and, most importantly, for our chess players!

With best regards, *Franc*

## About the Author

- Franc Guadalupe is a US Chess National Tournament Director, FIDE International Arbiter Category A, and FIDE International Organizer.
- He is a former US Chess Executive Director, US Chess Director of Events, and FIDE Zonal President for the U.S.
- He has organized and directed over 50 National events including many in Texas.
- In addition to his current position as TCA President he was President of the Florida Chess Association.

# Luis Salinas Memorial 79th Annual Texas State and Amateur Championships

Additional Info: <https://www.uschess.org/msa/XtblMain.php?202405276922>

The Luis Salinas Memorial 79th Annual Texas State and Amateur Championships were held in Fort Worth over Memorial Day weekend. The four-day event was named in memory of long-time TCA organizer Luis Salinas. There were 139 players that participated in the Championship and Amateur Sections. *Games start on Page 20.*

The **Championship Section** had 27 participants. Seven rounds were played with a Time Control of G/90;+30. **Vijay Srinivas Anandh** won the section with a score of 5.5/7. He was named the Texas State Champion. *See the cover photo.*

### Below is the List of Participants in the Championship Section.

#	Name	Rnd1	Rnd2	Rnd3	Rnd4	Rnd5	Rnd6	Rnd7	Tot
1	VIJAY SRINIVAS ANANDH	W22	W7	W9	L2	D3	W10	W4	5.5
2	ZURAB JAVAKHADZE	W5	W10	D3	W1	D9	L4	W7	5
3	KEVIN QIN	W26	W25	D2	D4	D1	W11	D5	5
4	ELBERT FANG	D11	W6	W13	D3	W10	W2	L1	5
5	JOSHUA MENG	L2	D23	X	W22	W16	W9	D3	5
6	ALEXANDER MCLAUGHLIN ELLIOTT	D12	L4	L19	B	W23	W16	W9	4.5
7	ARSAL GARDEZI	W24	L1	W8	L9	W18	W14	L2	4
8	BRIAN XING ZHOU	D21	W26	L7	D14	D19	W15	D12	4
9	BRIAN JEREMIAH TINEO	W18	W16	L1	W7	D2	L5	L6	3.5
10	BARRETT WINCHELL	W23	L2	W18	D17	L4	L1	W22	3.5
11	ZACHARY HASKIN	D4	D21	D16	W13	W12	L3	U	3.5
12	AUSTEN J GREEN	D6	H	H	W19	L11	U	D8	3
13	DAVID E ZELNICK	D17	W15	L4	L11	D21	W18	U	3
14	TIANJUN CHEN	L25	L22	W27	D8	W24	L7	D16	3
15	MAXWELL HAMPTON BARNES	H	L13	F	W23	W22	L8	D24	3
16	ERIC J ZHANG	B	L9	D11	W21	L5	L6	D14	3
17	RICHARD WEAVER	D13	W19	H	D10	U	U	U	2.5
18	LUCAS REVELLON	L9	W27	L10	W24	L7	L13	H	2.5
19	RAM ADITYA NANDULA	W27	L17	W6	L12	D8	U	U	2.5
20	VICTOR SAWHNEY-DURAN	H	H	U	U	U	W23	U	2
21	MARK W DEJMEK	D8	D11	D22	L16	D13	U	U	2
22	COLLIN ALEXANDER MILLER	L1	W14	D21	L5	L15	D24	L10	2
23	HARISH CHANDRAN	L10	D5	D24	L15	L6	L20	B	2
24	NEIL LAD	L7	H	D23	L18	L14	D22	D15	2
25	JUSTIN J SARKAR	W14	L3	H	U	U	U	U	1.5
26	ATULYA VAIDYA	L3	L8	U	U	U	U	U	0
27	DANIEL YANG	L19	L18	L14	U	U	U	U	0



The Amateur Section had 112 participants. Seven rounds were played with a Time Control of G/90;+30.

Yukta Sri Mididoddi won the section with a score of 6.5/7. She was named the Texas Amateur Champion.

← *The Amateur Champion with Organizer Tom Crane*

Below are the top 27 participants in the Amateur Section.

#	Name	Rnd1	Rnd2	Rnd3	Rnd4	Rnd5	Rnd6	Rnd7	Tot
1	YUKTA SRI MIDIDODDI	W50	W49	W15	W17	D4	W6	W9	6.5
2	SEBASTIAN LEE	W77	D37	W35	W45	H	W13	W4	6
3	RUSHEEL NIGUDKAR	W64	W67	L14	W36	W33	W31	W15	6
4	MOHIT SREEJAN BAYYARAPU	W81	W32	W30	W13	D1	W21	L2	5.5
5	DHRUV PATHAK	W42	L14	D55	W51	W62	W22	W21	5.5
6	LIKHIT BHANGALE	W72	D47	W18	W24	W22	L1	W23	5.5
7	COLIN WEI	H	W106	L25	W85	W47	W45	W24	5.5
8	HAVISH NAGASAI SASHA KUNCHANAPALLI	W95	W59	L11	W82	W60	D17	W28	5.5
9	RAHUL MYNALA	W78	W38	L22	W64	W34	W30	L1	5
10	SAMUEL GU	W71	L46	W80	W32	W61	D24	D17	5
11	TIM C STEINER	W66	W98	W8	L22	W46	L15	W30	5
12	SHAURYA MAZUMDAR	D69	W94	W37	D16	L30	W39	W31	5
13	YASEEN SHERIF H	W92	W41	W61	L4	W91	L2	W32	5
14	DANIEL J CLARKE	W54	W5	W3	H	L21	D16	W29	5
15	ARJUN BUPESHNATH	W55	W44	L1	W66	W68	W11	L3	5
16	LEO ZHU	X	W26	D46	D12	D48	D14	W33	5
17	YUE CHU	W53	W51	W34	L1	W50	D8	D10	5
18	ADVIK MANCHANDA	H	W69	L6	W43	D20	W60	W46	5
19	RONIT PODDER	W56	L61	W26	L48	W80	W49	D22	4.5
20	BRIAN PEREZ-DAPLE	W111	D36	W47	L46	D18	W40	H	4.5
21	ELLERY ZHANG	W52	W80	D45	W25	W14	L4	L5	4.5
22	JULIAN JOSEPH	W70	W85	W9	W11	L6	L5	D19	4.5
23	GREG WILDER	D94	D40	W41	W50	D26	W46	L6	4.5
24	MIRANSH PURVEN VYAS	W68	W58	W89	L6	W66	D10	L7	4.5
25	JASON WANG	W100	D28	W7	L21	D29	D27	W51	4.5
26	AADHYA JAY RAJAGOPALAN	W31	L16	L19	W101	D23	W81	W59	4.5
27	JOSEPH CHEUNG	L61	W70	L50	W41	W52	D25	W48	4.5

# Tournament Memories



# 2024 President's Cup - Final Four of College Chess

Additional Info: <https://www.uschess.org/msa/XtblMain.php?202403319112>

The **2024 President's Cup** tournament was held in Richardson on March 30th and 31st. There were 21 individual participants between the four teams that played. There were three rounds played with a Time Control of G90;+30. *Games start on Page 26.*

Two Texas teams participated in the tournament along with two Missouri teams. In the end, Missouri College (Missou) won the tournament with a score of 8.5/12. Webster University was a close second place with a score of 8.0/12. UTRTG scored 4.5/12, and UT Dallas scored 3.0/12.

## Below are the Team Composition and Results

1. Mizzou (Rating Avg:2614)								
Board		Rtg	Rnd 1	Rnd 2	Rnd 3	Pts.	Games	Rating Avg
1	GM Oparin	2737	0.5	1	1	2.5	3	2651
2	GM Antipov	2657	1	1	0.5	2.5	3	2633
3	GM Raja	2534	0	1	0.5	1.5	3	2612
4	GM Budisavljevic	2527	+	0.5	0.5	2	3	2561
2. Webster (Rating Avg:2670)								
Board		Rtg	Rnd 1	Rnd 2	Rnd 3	Pts.	Games	Rating Avg
1	GM Hakobyan	2698	1	1	0	2	3	2664
2	GM Gledura	2692	1	1	0.5	2.5	3	2621
3	GM Harsha	2632	1	0.5	0.5	2	3	2579
4	GM Quesada Perez	2659		0.5	0.5	1	2	2547
5	GM Kantor	2601	0.5			0.5	1	2462
3. UTRGV (Rating Avg:2606)								
Board		Rtg	Rnd 1	Rnd 2	Rnd 3	Pts.	Games	Rating Avg
1	GM Gazik	2641	0.5	0	0	0.5	3	2683
2	IM Beradze	2592	0	0	0.5	0.5	3	2655
3	GM Dudin	2622	1	0.5	1	2.5	3	2582
4	IM Rodrigue-Lemieux	2483	-			0	1	0
5	IM Druska	2567		0.5	0.5	1	2	2561
4. UT Dallas (Rating Avg:2568)								
Board		Rtg	Rnd 1	Rnd 2	Rnd 3	Pts.	Games	Rating Avg
1	GM Brodsky	2613	0	0	1	1	3	2692
2	GM Koustav	2615	0	0	0.5	0.5	3	2647
3	IM Escalante Ramirez	2581	0	0	0	0	3	2596
4	IM Juksta	2462	0.5	0.5	0.5	1.5	3	2565



Below are the Individual Results.

#	Name	Rnd1	Rnd2	Rnd3	Tot
1	GRIGORIY OPARIN	D13	W11	W5	2.5
2	BENJAMIN GLEDURA	W14	W16	D3	2.5
3	MIKHAIL ANTIPOV	W16	W14	D2	2.5
4	GLEB DUDIN	W8	D6	W17	2.5
5	ARAM HAKOBYAN	W11	W13	L1	2
6	BHARATHAKOTI HARSHA	W17	D4	D8	2
7	LUKA BUDISAVLJEVIC	X	D9	D10	2
8	HARSHIT RAJA	L4	W17	D6	1.5
9	KAROLIS JUKSTA	D15	D7	D12	1.5
10	YASSER QUESADA PEREZ	U	D12	D7	1
11	DAVID BRODSKY	L5	L1	W13	1
12	JURAJ DRUSKA	U	D10	D9	1
13	VIKTOR GAZIK	D1	L5	L11	0.5
14	KOUSTAV CHATTERJEE	L2	L3	D16	0.5
15	GERGELY KANTOR	D9	U	U	0.5
16	IRAKLI BERADZE	L3	L2	D14	0.5
17	BRIAN ESCALANTE	L6	L8	L4	0
18	EKIN BARIS OZENIR	U	U	U	0
19	SHAWN RODRIGUE-LEMIEUX	F	U	U	0
20	SAKSHAM RAUTELA	U	U	U	0
21	ANASTASIA PARAMZINA	U	U	U	0



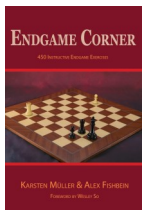


## New Chess Books

By Dr. Alexey Root, WIM

Dr. Alexey Root volunteers for the Texas Chess Association by writing this column.

- She was the 1989 U.S. Women's Champion.
- She is the Chessable Research Awards Coordinator:  
[https://www.chessable.com/research\\_awards](https://www.chessable.com/research_awards)
- She also teaches Chess Online courses for UT Dallas. Find registration information here:  
<https://www.utdallas.edu/chess/education-programs/>
- Find her books here: <https://amazon.com/author/alexeyroot/>



Grandmasters Karsten Müller and Alex Fishbein co-authored *Endgame Corner: 450 Instructive Endgame Exercises*.

It was published on December 4, 2023, by Russell Enterprises, LLC. Its suggested retail price is \$29.95.

Each diagram was taken from a real chess game. Above each diagram are stars. One star means the problem is simple while five stars means the problem might be challenging even for super-grandmasters.

At the end of each chapter are the solutions to the problems. The authors tell you how many points you earn for each problem. Sometimes all the points for a problem are for finding the correct first move. For other problems, you may earn additional points for understanding an endgame concept, such as distant opposition, or for finding moves that come later in the solution.

For many diagrams, I picked the wrong first move and earned zero points. A small consolation is that, in the games the diagrams are from, wrong first moves were sometimes also played by grandmasters. For those endgames, the authors explain why the grandmasters' moves were incorrect and then tell what should have been played.

After you total your points, find your total on an "Endgame ELO chart." Score almost perfectly and the authors declare, "You are Magnus Carlsen." Score poorly and the authors advise, "Try to win in the mid-game."

### About the authors

Grandmaster Karsten Müller has a doctorate in mathematics. Müller was named "Trainer of the Year" in 2007 by the German Chess Federation. He hosts the series "Endgame Magic" for ChessBase.

Grandmaster Alex Fishbein writes an endgame column for American Chess Magazine. In 1985, Fishbein won the first Arnold Denker Tournament of High School Champions. In 2018, he won the first National Senior Tournament of Champions. In 2020, Fishbein won the National Tournament of Senior State Champions, a different name than the tournament had in 2018. The senior tournament is now called the John T. Irwin National Tournament of Senior State Champions.

The foreword to *Endgame Corner: 450 Instructive Endgame Exercises* is by Grandmaster Wesley So, who has been ranked as #2 in the world.

### Test yourself!

Each chapter of *Endgame Corner: 450 Instructive Endgame Exercises* has chess diagrams, marked as White to move or Black to move. You must figure out if the side to move is playing for a win or a draw.

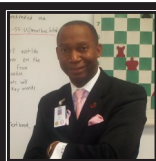
### Excerpt

The publisher's webpage about *Endgame Corner: 450 Instructive Endgame Exercises* links to a PDF excerpt. That excerpt gives the Table of Contents, the Introduction by Karsten Müller and Alex Fishbein, Wesley So's Foreword, and the first six problems (and first four solutions) from Chapter 3. That excerpt will give you enough information to assess if this book is at the right level for you.

### Links

<https://www.russell-enterprises.com/russell-enterprises/endgame-corner-br-450-instructive-endgame-exercises> is the publisher's webpage.

<https://www.amazon.com/Endgame-Corner-450-Instructive-Exercises-ebook/dp/B0CQKTT7LN> is one place to buy *Endgame Corner: 450 Instructive Endgame Exercises*.



## Coach's Corner - e4!

### *The Chess Top 40, Part 4*

by Robert L. Myers

\* **Editors Note:** *The Chess Top 40* began in the **Nov-Dec 2023** issue of *Texas Knights* and will continue in the next issue.

**8) Develop Pieces Quickly:** To maximize your board presence and influence, it's essential to bring your pieces (knights, bishops, rooks, and queen) into the game early. This helps with efficient coordination and control over the board. Developing chess pieces quickly is a fundamental principle in chess strategy, and it serves several important purposes. There's that phrase again: **Control of the Center:** The Center of the chessboard is a crucial area. By developing pieces quickly, you can control key central squares. Controlling the Center provides more mobility and flexibility for your pieces, allowing for better control of the board. Another point we have made earlier is **King Safety:** Rapid development often involves castling early, which is crucial for king safety. Castling helps to tuck the King away in a corner, usually behind a pawn structure, reducing the vulnerability of the King in the Center. **Coordination and Connectivity:** Developing pieces quickly allows for better coordination and connectivity between them. Connected pieces can support each other and create threats, making it more difficult for your opponent to find good moves. **Efficient Use of Time:** I have heard this my entire chess life, "Chess is about time and space." Chess truly is life, as life is comprised of time management. Developing pieces quickly allows you to use your time efficiently and put pressure on your opponent. It can force your opponent to respond to your threats and plans, putting them on the defensive. **Initiative:** Quick development can lead to gaining the initiative. By putting pressure on your opponent from the early moves, you can dictate the flow of the game and force your opponent to react to your ideas. **Piece Activity:** Developed pieces are more active and have a greater influence on the board. An active piece can control more squares and participate in both attacking and defensive operations. **Prevention of Weaknesses:** Rapid development can help prevent weaknesses in your position. By getting your pieces into good squares quickly, you can avoid leaving weaknesses in your pawn structure or King's position.

**Threat Creation:** Developing quickly allows you to create threats against your opponent's position. This can force your opponent to make defensive moves, disrupting their plans and giving you more control over the game. Developing chess pieces quickly is a key principle because it helps in controlling the Center, ensuring king safety, improving piece coordination, using time efficiently, gaining initiative, increasing piece activity, pre-

venting weaknesses, and creating threats. All these factors contribute to a stronger and more harmonious position, giving you a better chance to outmaneuver your opponent.

**9) Bishops vs. Knights:** Bishops are generally stronger in open positions with long diagonals, while knights excel in closed positions due to their unique L-shaped movement. Understanding this principle helps you position your pieces for the type of position you're facing. The strength of bishops in open positions with long diagonals and knights in closed positions with their unique L-shaped movement is rooted in the nature of their respective abilities and how they interact with the characteristics of the chessboard. Bishops, because of their unique ability to move, have long diagonals, and in open positions, long diagonals become more significant because they allow bishops to control and influence a large number of squares. Bishops can traverse the entire length of an open board, putting pressure on various areas simultaneously.

**Flexibility:** Bishops are long-range pieces, and in open positions, they can navigate freely across the board. This flexibility allows them to adapt to changing situations and target both central and distant squares. Knights, however, have closed positions: Knights have a unique L-shaped movement, allowing them to jump over other pieces. This ability makes knights effective in closed positions where pawns and other pieces might create a more congested board. Knights can bypass obstacles and access squares that may be challenging for other pieces.

**Tactics and Maneuverability:** In closed positions, tactics and maneuverability become crucial. Knights can maneuver behind enemy lines or find tactical opportunities in the confined space of a closed position. Their ability to jump over other pieces can be advantageous when navigating through crowded positions. Understanding these characteristics will help you make strategic decisions based on the position of the pieces and the overall nature of the game. In open positions, bishops' long-range capabilities shine, while in closed positions, the knights' unique movement becomes more valuable. A well-rounded strategy often involves coordinating the strengths of both bishops and knights to create a harmonious and effective chess army.\*

Robert L. Myers is a Level V Candidate for Master Chess Coach, High School Basketball Coach, freelance writer, and an award-winning 30-year veteran classroom educator. You can follow "Coach" on social media and at [www.thechessacademy.com](http://www.thechessacademy.com)

# Advik Manchanda - World School Chess Championship 2024, Peru

By Mohit Manchanda



We are thrilled to announce that Advik has achieved something truly remarkable at the **World School Chess Championship 2024** in Peru. In the Under 9 Open category, he secured the Silver Medal, claiming the 2nd position among 136 players from around the world. This achievement is a testament to Advik's dedication, skill, and perseverance in the game of chess.

Starting the tournament in 7th place and finishing in 2nd is a remarkable feat in itself. Across 9 intense games, Advik scored an impressive 7.5 points, showcasing his strategic prowess and determination on the board. Additionally, he not only brought home the trophy and a medal but also won a phone, adding to the celebration of his success.

Moreover, Advik has now earned the direct title of Candidate Master (CM), further solidifying his position as a rising star in the world of chess.

We are immensely proud of Advik's accomplishments, and wanted to share this exciting news with the Texas Chess Association, as a member of our chess communi-

ty. We believe that his achievement reflects positively on our association and highlights the talent and potential of our young chess players.

Thank you for your attention, and please join us in congratulating Advik on this outstanding achievement.

## US Chess Article:

Three Americans made podium (top-three) finishes at the 2024 FIDE World School Chess Championship, held May 1 through 9 in Lima, Peru.

<https://new.uschess.org/news/three-americans-make-podium-finishes-2024-fide-world-school-championship>

## FIDE News Articles:

FIDE World School Chess Championship crosses midpoint.

<https://www.fide.com/news/3005>

The World School Chess Championship in Peru has come to a close.

<https://www.fide.com/news/3016>

## Youtube Video:

The World School Chess Championship 2024 in Peru has ended, but the memories and lessons learned will continue to inspire young minds!

[https://www.youtube.com/watch?v=sAPjEw91gJ8&ab\\_channel=FIDEchess](https://www.youtube.com/watch?v=sAPjEw91gJ8&ab_channel=FIDEchess)



# For Tournament Directors and Organizers, Part 2

By Franc Guadalupe (see qualifications at the bottom of *Page 4*)

This article covers some of the biggest differences between US Chess and FIDE tournament rules. Some of those differences are listed below.

Under US Chess rules, if both players are late at the start of the game, as soon as one arrives, the time elapsed is evenly split between the two players. For example, if the first player to arrive at the board is 30 minutes late, each player loses 15 minutes. If the player with the white pieces arrives first, he or she will start the game after the TD has made the clock adjustment. If the player with the black pieces arrives first, the TD will make the clock adjustment, and the player will wait for the arrival of the other players. Under FIDE rules, all the time is deducted from the player with the white pieces. Of course, the arbiter must make the clock adjustment when one of the players arrives.

Insufficient Material to Continue and Insufficient Material to Win on Time are defined in 14D and 14F of the US Chess Rule Book. One of the reasons listed is if one side does not have a forced win. As a result, this type of game is declared a draw, if claimed. For example, if a player has only the king and two knights, with no pawns, and the player does not have a forced win, it is a draw, if claimed. But Article 5.2.2 of the FIDE Laws of Chess states that “The game is drawn when a position has arisen in which neither player can checkmate the opponent’s king with any series of legal moves”, and that means even a “helpmate.” So, under FIDE rules, the game cannot be ruled to be a draw, even if claimed. But if the rules of the event allow, the players can agree to a draw.

Another difference is that under US Chess, only players can call a fallen flag, whereas under FIDE rules, the arbiter can call a flag without a claim by a player. And, under FIDE rules, an arbiter will correct all observed rule violations even if the opponent does not make a claim! There are other differences in correcting an illegal move, that is, after what number of moves, requirement to record moves, pawn promotion, claiming a win

on time, castling (no variations under FIDE rules), default time, draw claim by triple occurrence, updating the scoresheet at the end of non-sudden death time control, using an inverted rook to represent a queen, illegal move rulings, adjusting remaining time on the clock, and others. The explanation of these differences is too lengthy for the space available here, but on the US Chess website, there is a document explaining them in detail. Therefore, I encourage all tournament directors and organizers to read them at <https://new.uschess.org/sites/default/files/media/documents/uschess-rules-fide-laws-comparison-1-1-2023.pdf>.

Speaking of FIDE rated events, I will add that all arbiters of such events must be FIDE licensed or titled. That is, they must be a National Arbiter (NA), FIDE Arbiter (FA), or International Arbiter (IA). But, for norm events the arbiters must have a FIDE title, i.e., FA or IA.

Lastly, I would like to remind you of the US Chess requirement for all active TDs to be SafeSport certified. There are 131 tournament directors certified as such in Texas.

Please see:  
[https://new.uschess.org/safesport-certified-tds?first\\_name=&last\\_name=&uscf\\_state\\_22=TX&items\\_per\\_page=75&gender\\_id=All&page=0](https://new.uschess.org/safesport-certified-tds?first_name=&last_name=&uscf_state_22=TX&items_per_page=75&gender_id=All&page=0).

Events listing TDs who are not SafeSport certified will not be rated by US Chess. The good news is that even though all current TDs had to be SafeSport certified by June 1, 2024, according to US Chess, those TDs who did not take and pass the course, may still do so, and their TD level certification will be re-activated.

For future articles on this subject (TDs and Organizers), please submit your questions or proposed topics to [flguadalupe@aol.com](mailto:flguadalupe@aol.com). Thanks again to those who direct or organize chess events. We really appreciate all you do to promote chess in Texas!

# 2024 TCA Election Information

## Nominations

Nominations for the offices of President, Vice-President, Secretary, and Treasurer need to be submitted to the Editor of Texas Knights via email to [texasknightsed@texaschess.org](mailto:texasknightsed@texaschess.org) before Midnight CDT on **June 30**.

Nominees must be members in good standing of the Texas Chess Association as well as residents of the state of Texas.

A candidate must be nominated to run for office. Self nominations are NOT allowed.

Nominees must notify the Editor of Texas Knights via email that a nomination has been accepted, and provide (optional) candidate statements and/or photos by **July 7th**, otherwise, the assumption will be that a nomination has been declined.

## Election Specifics

To be eligible to vote, you must be a TCA member as of **July 1st**, 16 years of age or older, and a resident of Texas.

Candidate information will be included with the ballot you receive and in the July-August 2024 issue of *Texas Knights*.



Electronic ballots will be distributed to the email address that you supplied when you purchased your TCA membership. Distribution will

begin on **August 1st**. The online election via electronic ballot will close on **August 23rd** at midnight.

Paper ballots can be requested by **August 1st** and returned with a postmark no later than **August 23rd**. An electronic ballot will not be distributed if you request a paper ballot.

If you have a family membership, you will receive multiple ballots at the same email address or mailing address. Children under 16 are not allowed to vote.

If you do not receive a ballot in your email inbox, please check your other folders, such as spam, junk, or promotions. If you still don't find it, please contact Acting Secretary Renate Garcia so we can send you a paper ballot. Again, the returned ballot must be postmarked no later than **August 23rd**.

The results of the election will be announced at the Southwest Open TCA Business Meeting. If there is no Southwest Open, there will be a teleconference to announce the results. Details about how to attend the teleconference will be posted on the TCA website and Facebook page.

All election inquiries and paper ballot requests should be sent via email to the Election Committee Member and Acting Secretary, Renate Garcia.

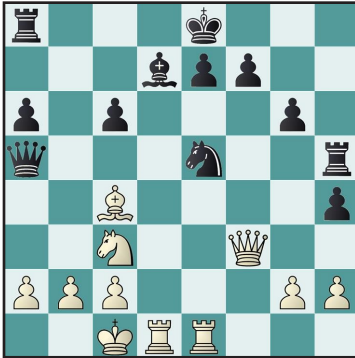
Email: [renategarcia1@gmail.com](mailto:renategarcia1@gmail.com)

# Tactics Time!

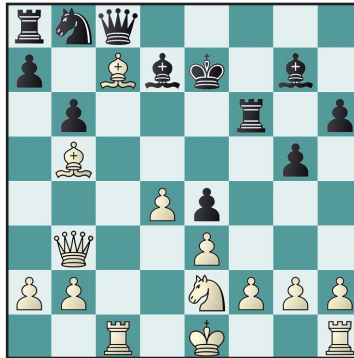
by Tim Brennan

These positions came from games played in Texas (or elsewhere) by at least one Texas Player.

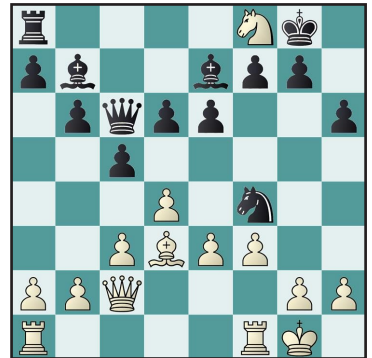
Answers can be found on page 18.



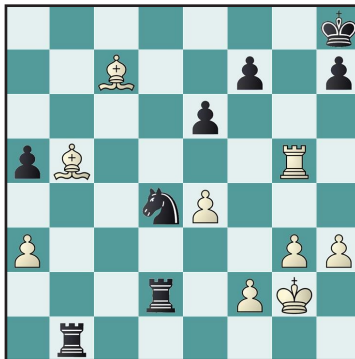
1 J. Wang - J. Proleiko  
Spice Cup 2023  
White to Move



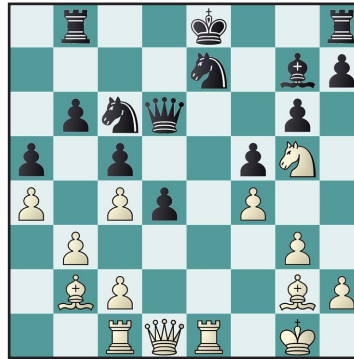
2. G. Gonzalez - A. Carrillo  
South Texas State Scholastic 2024  
White to Move



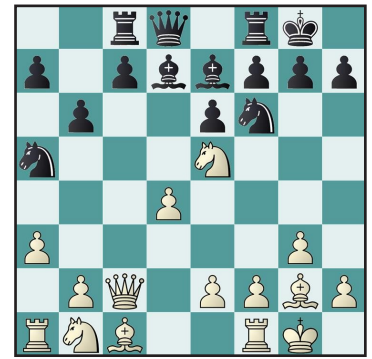
3. J. Solages - C. Cantu  
South Texas State Scholastic 2024  
White to Move



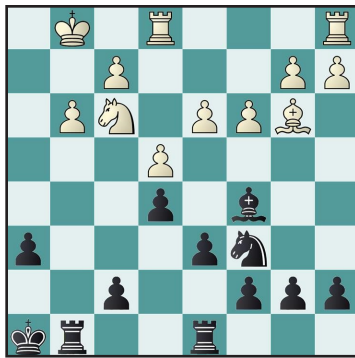
4. E. Rodriguez - X. Figueroa  
South Texas State Scholastic 2024  
White to Move



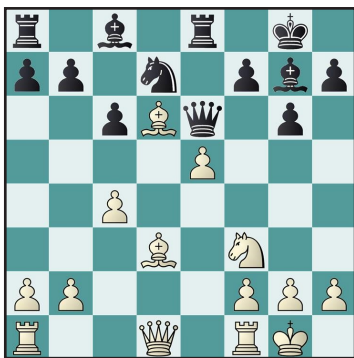
5. A. Thilop - D. Rincon  
South Texas State Scholastic 2024  
White to Move



6. S. Vuyyuru - E. Garcia  
South Texas State Scholastic 2024  
White to Move

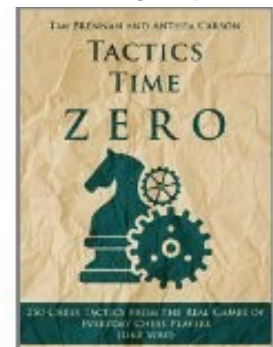


7. M. Gonzalez - D. Gonzalez  
South Texas State Scholastic 2024  
Black to Move



8.O. Zhang - G. Lopez  
South Texas State Scholastic 2024  
White to Move

Available Digitally Now!!!



[www.amazon.com/dp/B014AL1FRG/](https://www.amazon.com/dp/B014AL1FRG/)

## US CHESS TOP PLAYERS OF TEXAS - May 2024 *Regardless of Residence or Federation*

<b>Overall</b>			<b>Age 18 (continued)</b>			<b>Age 11</b>		
14	Xiong, Jeffery	2712	89	Miller, Collin Alexander	2002	12	Anandh, Vijay Srinivas	2106
15	Onischuk, Alexander	2708	92	Sathiararam, Sarvadh	1992	32	Yuan, Owen	1972
28	Matviishen, Viktor	2652	93	Pathak, Dhruv	1987	54	Zhang, Ellery	1870
34	Li, Ruifeng	2641	96	Trey, Justin	1980	59	Seelam, Tanish	1850
38	Vazquez, Guillermo	2628				62	Kandikayala, Srikar	1847
41	Stukopin, Andrey	2620				66	Petukhov, Arthur	1826
50	Woodward, Andy Austin	2600	60	Polavaram, Rithik Sai	2132	73	Vyas, Miransh Purven	1811
55	Maciejaj, Bartlomiej	2593				81	Wu, Zekai Bryson	1779
57	Beradze, Irakli	2592						
58	Wang, Justin	2591	10	Laddha, Shubh Jayesh	2345			
61	Belous, Vladimir	2584	57	Qin, Kevin	2121	54	Tendulkar, Ojas	1727
74	Druska, Juraj	2567	70	Lomakina, Anzhelika	2074	89	Garcia, Kaiser Troy	1591
77	Hernandez, Holden	2560	94	Wang, Andy Y	2023	97	Serikar, Arav	1569
78	Duque, Sm Raymond D.	2559	98	Chandran, Harish	2019	97	Praveen Kumar, Mithun Pranav	1569
82	Root, Douglas D	2551				100	Jackson, Leo Daniel Olivera	1568
85	Steingrimsson, Hedinn	2541						
90	Macovei, Andrei	2534	10	Gutla, Aryan	2323			
95	Hevia Alejano, Carlos A	2527	11	Melillo, Lucius	2312			
98	Fus, Jakub	2523	12	Nandhakumar, Vaseegaran	2297	19	Zhang, Oscar Yihang	1981
			32	Gardezi, Arsal	2186	27	Kolli, Rishi	1812
			56	Shafer, Logan C	2100	32	Maddipati, Srihas Sai Sarvesh	1767
			68	Bist, Atharva	2065	42	Zhang, Lawrence	1730
<b>Age 65 and Over</b>			75	Zhang, Eric J	2052	43	Manchanda, Advik	1702
9	Bradford, Joseph Mark	2444	83	Friedman, Andrew Charles	2039	58	Liu, Chloe	1697
70	Simms, Gary	2201	97	Raghuraja, Sri Avishkar	2015	67	Bee, Leonel	1586
75	Hulse, Brian	2200				68	He, Julian	1547
75	Weaver, Richard	2200				75	Wang, Nathan Zicheng	1544
75	Anderson, Selby K	2200				75	Rajagopalan, Aadhya Jay	1512
75	Calogridis, Michael S.	2200				79	Muthiah, Yugan	1506
75	Harrington, Robert	2200				84	Baksi, Antariksh	1479
						96	Kremer, Gregory	1443
			<b>Age 14</b>					
			2	Liu, Eric Chang	2440			
			5	Chen, Ryo Wenyu	2414			
			6	Kunka, Harshid	2378			
<b>Age 50 and Over</b>			17	Li, Rachael	2276			
12	Duque, Sm Raymond D.	2559	47	Hiwale, Ronak	2132			
13	Root, Douglas D	2551	50	Raju, Yakshwag Reddy	2113	18	Yao, Annie	1693
31	Bradford, Joseph Mark	2444	63	Nair, Ajitesh	2053	24	Li, Owen	1631
47	Allcock, Rawle A	2375	70	Lad, Neil	2043	27	Iskandarov, Elvin	1593
75	Almeida, Alfonso A	2281	73	Poliseti, Lohit Krishna Narayana	2030	32	Lan, Kai Zhou	1564
95	Feinstein, Michael	2251	88	Dasari, Saathvik	1986	44	Yang, Matthew	1477
			99	Bayyrapu, Mohit Sreejan	1962	56	He, Jayden	1421
			42	Diao, Matthew Guo	2147	71	Bergknoff, Gabriel	1336
						79	Chang, Abel	1280
<b>Under Age 21</b>						86	Wang, Mark	1244
8	Woodward, Andy Austin	2600				87	Sutantri, Benjamin Matthias	1241
9	Wang, Justin	2591						
17	Deviprasath, Sharvesh R	2510						
25	Vivekananthan, Anish	2469	<b>Age 13</b>					
29	Rorrer, Grayson	2457	<i><b>Woodward, Andy Austin</b></i>	<b>2600</b>				
34	Liu, Eric Chang	2440	27	Meng, Joshua	2092			
47	Chen, Ryo Wenyu	2414	47	Gu, Samuel	1998			
57	Kunka, Harshid	2378	55	Zhou, Brian Xing	1958	28	Joseph, Asher	1255
68	Oberoi, Shelev	2348	57	Thilop, Aarav Nambiar	1954	32	Chen, Yiheng Ethan	1193
70	Laddha, Shubh Jayesh	2345	62	Nigudkar, Rusheel	1936	51	Choi, Nolan	1120
87	Gutla, Aryan	2323	67	Zhang, Sunny	1926	60	Lanka, Aaditya	1074
100	Melillo, Lucius	2312	76	Wei, Colin	1914	77	Karthik, Krish	1023
						78	Wong, Charles	1021
						87	Arambul, Zoey	1003
						87	Ng, Parker	1003
			<b>Age 12</b>					
			11	Singh, Siddharth	2185			
<b>Age 18</b>			19	Yang, Daniel	2123			
<i><b>1 Wang, Justin</b></i>	<b>2591</b>		20	Fang, Elbert	2110			
<i><b>2 Deviprasath, Sharvesh R</b></i>	<b>2510</b>		23	Wang, Kyle Y	2104			
5	Rorrer, Grayson	2457	51	Shen, Yangyang	1943			
9	Oberoi, Shelev	2348	55	Vuyyuru, Shriyan	1920	<b>Women</b>		
21	Gundam, Rohit	2257	71	Ramachandran, Advait	1891	24	Nguyen, Emily	2325
31	Kumarappan, Ganesh	2214	72	Bhangale, Likhith	1878	36	Li, Rachael	2276
39	Zheng, Peter	2179	85	Konstantakos, Christos	1834	81	Palmero Martinez, Rachel	2092
45	Trakru, Rohun	2157	93	Bee, Karstein	1807	87	Yellamraju, Ambica	2081
70	Yellamraju, Ambica	2081	94			92	Lomakina, Anzhelika	2074
73	Pullabhotla, Venkata	2054						





<b>Women Age 65 and Over</b>			<b>Girls Age 15</b>			<b>Girls Age 11 (continued)</b>		
31	Hardesty, Brenda T	1068	27	Gupta, Sara Sachin	1716	64	Kalavagunta, Saanvika C	1173
39	Pulliam, Landra	792	38	Singh, Sejal	1620	72	Perel, Livia	1107
40	Cain, Jo Ellen	720	53	Mcnutt, Kaitlynn Lee	1464	73	Nguyen, Suri Ngoc	1106
45	Swafford, Barbara R	314	58	Sun, Yimeng Jenny Jenny	1426	80	Munsayac, Stella	1077
			59	Akella, Sravya	1424	83	Palamarthy, Shreya	1047
<b>Women Age 50 and Over</b>			64	Ande, Eesha K	1385	88	Perez, Layla Olivia	1021
7	Root, Alexey	2000	70	Sharan, Neha	1338	90	Muniz, Camila K	1018
34	Kent, Nadia Taylor	1504	73	Laskaris, Evie	1329	93	Valdez, Arianna Nickole	1008
43	Stuckert, Elena	1427	75	Kirumaki, Shreya A	1309	97	Diwan, Kiara	986
61	Kneen, Melanie Anne	1212	78	Seals, Ayre Allbritton	1300	98	Durbhakula, Bhanusri	970
73	Hardesty, Brenda T	1068	82	Torres, Sahara J	1271			
98	Pulliam, Landra	792	95	Caldera, Sophia M	1193			
99	Lively, Shana	783	98	Milova, Vladislava	1169			
			99	Reddy, Laxmisri V	1148			
<b>Girls Under 21</b>			<b>Girls Age 14</b>			<b>Girls Age 10</b>		
10	Li, Rachael	2276		Li, Rachael	2276	21	Choi, Nyla	1405
33	Yellamraju, Ambica	2081	3	Prakash, Nandini	1921	23	Vijay, Sahasra	1401
34	Lomakina, Anzhelika	2074	11	Hosur, Sanmita	1807	30	Mandapati, Shriya	1289
56	Nguyen, Anh Nhu	2012	18	Stubbins, Isabella	1623	55	Kaul, Anika Shambhavi	1095
69	Shen, Yangyang	1943	33	Shankar, Aashritha Vidhya	1507	56	Guzman, Lua	1093
76	Zhang, Sunny	1926	47	Tiruveddhula, Suhavi	1399	61	Parame, Frances Jamie	1066
80	Prakash, Nandini	1921	64	Callens, Jael	1369	62	Hiwale, Riona	1060
84	Yellamraju, Aparna	1918	66	Cruz, Vivica Renee	1282	67	Galvan, Ashley	1032
			74	Pyle, Abigail	1220	73	Borse, Anushka	1015
<b>Girls Age 18</b>			82	Ford, Katherine Michelle	1180	75	Serrato, Nailey A	1012
4	Yellamraju, Ambica	2081	84	Venkadesan, Prathyuktha	1107	93	Anbalagan, Anyasree	912
7	Yellamraju, Aparna	1918	91			99	Villegas, Valentina Loretto	872
20	Tiruveddhula, Saanvi	1657	<b>Girls Age 13</b>			<b>Girls Age 9</b>		
47	Hernandez, Sarah	1316	5	Zhang, Sunny	1926	4	Liu, Chloe	1697
48	Babaria, Rajvi Rakesh	1296	25	Namala, Dhanvi	1696	12	Sun, Claire	1403
57	Mallick, Lipika	1204	26	Borse, Tanvi	1677	17	Ganesh, Kaira Ananya	1282
63	Morales, Natalia Aseneth	1104	33	Vinayagaram, Nethra	1632	38	Saha, Prateeti	1038
77	Cisneros, Anahi	872	49	Raghuraja, Sri Yashvi	1461	43	Cruz, Julia A	1003
94	Varanasi, Sriharshita	592	55	Pidathala, Esha	1372	48	Noyola, Arianna	961
<b>Girls Age 17</b>			76	Vijayaraghava, Aditi	1215	57	Loera, Samantha Nicole	910
20	Yu, Vicky	1648	80	Song, Lucia	1190	58	Banala, Ira Jaya	908
37	Naidu, Suchitra Ganesh	1478	92	Gracia, Emma Cadence	1129	66	Patino, Eliana	868
49	Zhang, Taylor Chengyue	1373	95	Velu, Shambhavi	1121	75	Raina, Advika	820
51	Vasquez, Izabel Amparo	1357	97	Sastry, Adya	1106	83	Vargas, Zaira	782
54	Solis, Natalie	1334	<b>Girls Age 12</b>			90	Karthik, Aadhya	760
56	Cardin, Maddie	1322	2	Shen, Yangyang	1943	97	Li, Erica	726
63	Athila, Akshaya	1246	35	Maddipati, Srijani Sai	1383	<b>Girls Age 8</b>		
70	Thornhill, Eowyn	1202	45	Rios-Ocampo, Sofia	1297	5	Yao, Annie	1693
71	Wickramasinghe, Binadie	1200	46	Krafka, Christina	1292	22	Shi, Jiahui	1122
76	Adams, Sapphire	1161	58	Quezada, Miranda Isabela	1218	46	Sony, Neha Teresa	903
76	Asthigiri, Lakshana	1161	65	Zamarripa, Salma	1166	47	Wang, Erica	902
79	Nitturi, Rajni	1137	69	Nair, Aditi	1133	49	Zhao, Lily	897
84	Torres, Asia	1048	84	Bustanza, Lia A	1084	91	Panta, Keerthana Reddy	660
85	Deleon, Christina Marie	1046	89	Kuchibhatla, Nitya	1045	<b>Girls Age 7 and Under</b>		
88	Parvathaneni, Voshita	1017	92	Perez, Andrea	1030	15	Arambul, Zoey	1003
95	Pilla, Ananya Valli	972	98	Cisneros, Ariana	1003	23	Peng, Grace	901
			100	Bocanegra, Victoria	987	44	Cantu, Isabella	673
<b>Girls Age 16</b>			<b>Girls Age 11</b>			52	Quiroga, Alana	619
6	Lomakina, Anzhelika	2074		Zhang, Ellery	1870	53	Manchanda, Annika	616
18	Roy, Aanya	1825	9	Zhang, Alicia S	1726	59	Webber, Evelyn Alyssa	589
22	Wang, Kalia Yuke	1783	15	Fu, Elaine	1656	76	Garcia, Natalia M	509
30	Reddy, Tanvi Chinthagunta	1655	22	Senapati, Avni	1527	79	Leos, Aria Gisela	490
53	Ham, Emily	1400	31	Duran, Violet	1292	87	Vignesh, Laksha	471
88	Nakkala, Sharvi	1076	51	Liu, Mina	1174	90	Gonzalez, Jaylin Rose	461
91	Mehta, Tanisi	1061				96	Protopapas, Athena Rose	441
98	Gorisipati, Adithi	1017				97	Quinones, Natalie R	438

## Tactics Time! Answers - Download Now (see page 19)

1. 20.Rxe5 removes the defender of f7. 20...Rxe5 21.Qxf7+ Kd8 22.Qf8+ Kc7 23.Qxa8
  2. 17.Bd6+ discovered attack on the Queen. 17...Rxd6 18.Rxc8
  3. 16.Bb5+!! clearance tactic attacking the Queen threatening Qh7+ and mate. Black cannot meet both threats.
  4. 32.Be5+ f6 33.Bxf6#
  5. 18.Re6+ and after the Queen moves 19.Bxc6+ taking advantage of the pinned knight.
  6. 12.b4 traps the Black Knight.
  7. 22...Rxc3 the f2 pawn is pinned. 23.Kf1 Rxf3
  8. 14.Ng5 traps the Black Queen.
- Cover. 10...e5 11.Bg3 e4 forks the Bishop and Knight

# chessable

Tactics Time courses are now available on Chessable by Tim Brennan & Anthea Carson

Tactics Time 1: <https://www.chessable.com/tactics-time-1/course/21108/>

Tactics Time 2: <https://www.chessable.com/tactics-time-2/course/24008/>

## TCA Memberships provided by Jim Hollingsworth

TCA Current Memberships as of

Fri May 31 11:02:55 2024

Category	Region										Out of State	Grand Total	Pct.
	I	II	III	IV	V	VI	VII	VIII	IX	X			
Junior Online		7	35	1	92	28	10	323	1	274		771	49.8%
Junior	2	8	15		43	31	6	26	1	26	1	159	10.3%
Family	4	14	13		40	22	12	23		27		155	10.0%
Regular Non-subscriber	1	13	9	4	64	19	6	6		26		148	9.6%
Regular	1	19	23	1	24	16	6	9	2	6	1	108	7.0%
Lifetime Regular	1	9	7		6	7	4	3	2		2	41	2.6%
Family Online		4			9	7	5	5		9		39	2.5%
Affiliate	1	8	7	1	9	4		3	3			36	2.3%
Family Patron	4	6		3	8	2	2	3	2			30	1.9%
Student Online	1		18		4					1	1	25	1.6%
Lifetime Patron		2	2		1	4	1	1			2	13	0.8%
Patron		1	2		5	3				1		12	0.8%
Complimentary			1					1			1	3	0.2%
Student					1			1				2	0.1%
Patron Online						2						2	0.1%
Blind			1		1							2	0.1%
Honorary Life Member											1	1	0.1%
Foreign Member											1	1	0.1%
<b>Grand Total</b>	<b>15</b>	<b>91</b>	<b>133</b>	<b>10</b>	<b>307</b>	<b>145</b>	<b>52</b>	<b>404</b>	<b>11</b>	<b>370</b>	<b>10</b>	<b>1548</b>	<b>100%</b>
	1.0%	5.9%	8.6%	0.6%	19.8%	9.4%	3.4%	26.1%	0.7%	23.9%	0.6%	100%	

# Upcoming Events



All event information can be found directly on the *Texas Clearing House Calendar* by clicking/tapping <<here>>, by using the QR Code at the left, or by visiting <https://texaschess.org> and selecting *Tournaments* and then selecting *Texas Clearing House Calendar*.

## Game Index

+ = Additional Games in Games PGN file.  
\* = No Article Associated with Games.

#	Tournament	ECO	Result	Annotated by	Rnd	Date	Page(s)
1	79th Annual Texas State and Amateur...+	A14	1-0	Fritz 19	4.1	2024.05.26	20
2		C97	1-0		4.3		20
3		C16	1-0		4.5		20-21
4		B31	0-1		4.6		21
5		B55	1-0		4.7		21-22
6		E69	0-1		4.8		22
7		D78	1-0		4.10		22-23
8		B22	0-1		5.3		23
9		B21	1-0		5.4		23-24
10		B23	1-0		5.5		24
11		D04	1-0		5.6		24-25
12		A11	1-0		5.9		25
13		B06	0-1		5.10		25
14		A14	0-1		6.1		25-26
15	2024 Final Four+	D43	1-0		1.1	2024.03.30	26
16		D11	0-1		1.2		26-27
17		D36	1-0		1.3		27
18		A29	0-1		1.6		27-28
19		C45	0-1		1.7		28
20		B40	1-0		2.1		28
21		B32	0-1		2.2		28-29
22	Strack Intermediate*	B12	1-0		N/A	2025.04.05	29
23	2024 North/Central Texas State Scholastic*+	A00	1-0	S.Deviprasath	6	2024.03.03	29



Game/Tactics Time! Puzzle PGN files are downloadable by using this link: <https://bit.ly/3qK7YQB> or by scanning the QR Code at the left.

**Note:** Not all issues have associated PGN files.

1

**Javakhadze,Z.(2461)  
Anandh,V. (2116)**

**1.Nf3 Nf6 2.g3 e6 3.Bg2 Be7 4.0-0 5.c4 d5 6.Ne5** A14: English Opening: 1...e6 with b3 by White. [6.d4] **6...c5= 7.cxd5 Nxd5 8.Nc3** The position is equal. **8...Nf6** [8...Bf6= deserves consideration. 9.Ng4 Nc6] **9.d3 Nbd7** [9...Qc7!= 10.f4 Nc6] **10.Nc4** White has more active pieces. The black rooks are passive. **10...Nb6 11.Qb3 Nbd5 12.Rd1 Rb8N** [12...b6; Predecessor: 12...b6 13.h3 Bb7 14.Nxd5 Bxd5 15.e4 Bb7 16.Na5 Ba6 17.Nc6 Qd7 18.Nxe7+ Qxe7 1-0 Kravanja,G (2282)-Schloffer,J (2084) AUT-cht2M 1920 Austria 2019 (6.4)] **13.d4 Nxc3** [13...cxd4 14.Rxd4 Bc5] **14.bxc3 b5 15.Ne5** Nc6 would now be deadly. **15...Qc7 16.Nc6 c4 17.Qc2 Rb6 18.Nxe7+ Qxe7 19.a4!**↑ aiming for Ba3. Black is under strong pressure. **19...Qd7 20.Ba3 Re8 21.Bc5** A strong pair of Bishops. **21...Ra6 22.axb5** Black is weak on the dark squares **22...Qxb5 23.Rxa6 Qxa6 24.Qb2** Wards off Bb7. Black must now prevent Ra1. **24...Nd5** [24...Qa4 25.Ra1 Qb3] **25.Ra1 Qb7 26.Qxb7 Bxb7 27.Rxa7 Bc6 28.Ra6 Rc8 29.e3** [Better is 29.Kf1] **29...h6 30.h3 Kh7 31.Bd6 Kg8 32.g4 Bd7** [32...Bb7 33.Ra7 Bc6] **33.Ra3!+ Bb5 34.e4 Nf6 35.f3 Rc6 36.Bb4** Ra8+ is the strong threat. **36...Rc7?** [36...Ra6 keeps fighting. 37.Rxa6 Bxa6] **37.Kf2 Rb7 38.Ke3 Kh7 39.f4 Bc6 40.Ra5 Rb8 41.Rc5 Bb5 42.Rc7 Kg8 43.d5 exd5 44.exd5 Ra8 45.d6 Ra1 46.Rb7 Be8** [46...Ba4 47.Ra7 Re1+ 48.Kf2 Ra1] **47.g5 hxg5 48.fxg5 Nd7 49.Bc6 Nf6 50.Bxe8 Nxe8 51.d7**

**Re1+ 52.Kf2** Weighted Error Value: White=0.19 (very precise) / Black=0.41. Mistake: White=1 Black=8 Inaccurate: White=2 Black=3 OK: White=19 Black=12 Best: White=1 Black=2 Strong: White=2 --- [52.Kd2 Re6 53.d8Q (53.d8B Nd6+-) 53...Kh7 54.Rxf7 Kg6 55.Qd5 Kxf7 56.Qf5+ (56.Qxc4 Nc7+-; 56.Qd7+ Kg6 57.Qxe6+ Kxg5 58.Qxe8 Kf6 59.Bc5 Kg5 60.Qe6 Kf4 61.Qg6 Ke5 62.Ke3 Kd5 63.Qd6#) 56...Nf6 57.g6+ Deflection (57.gxf6 Rxf6 58.Qd5+ Kg6+-) 57...Kg8 58.Qxe6+ Kh8 59.Qxc4 Ng8 60.Qh4+ Nh6 61.Bd6 Kg8 62.Qd8#] **1-0**

2

**Tineo,B. (2173)  
Gardezi,A. (2186)**

**1.e4 e5 2.Nf3 Nc6 3.Bb5 a6 4.Ba4 Nf6 5.0-0 Be7 6.Re1 b5 7.Bb3 d6 8.c3 0-0 9.h3 Na5 10.Bc2 c5 11.d4 Qc7 12.d5 Nc4 13.b3 C97:** Closed Ruy Lopez: Chigorin Defence: 11 d4 Qc7, sidelines. **13...Nb6 14.Nbd2** [14.a4is superior.] **14...c4= 15.Re3** White has an edge. **15...Bd7N** [Predecessor: 15...Nbx5 16.exd5 Nxd5 17.Nxc4 Nxe3 18.Nxe3 Qxc3 19.Bd2 Qc5 20.Be4 Be6 21.Rc1 Qa7 22.Bxa8 Qxa8 1-0 Mehdi,H (2187)-Shawket Bin,O (1996) Dhaka Walton op 2021 (3)] **16.Nf1** [16.Ba3] **16...a5 17.Ba3 cxb3 18.axb3 g6** [18...a4=] **19.Nxe5 b4! 20.Nxd7 Nfxd7 21.cxb4 axb4 22.Bb2 Rac8** [22...Bf6 23.Bxf6 Nxf6] **23.Bb1** White is more active. [But not 23.Qd4? Bf6 24.Qd2 (24.e5? Bxe5 25.Rxe5 dxe5+-) 24...Bxb2+- (24...Qxc2? 25.Bxf6 Qxd2 26.Nxd2 +-) ] **23...Bg5** [23...Rfe8 24.Bd4

(24.Qd4 Bf6) 24...Nc5] **24.Qg4 Bxe3** [24...Bf6 25.Bxf6 Nxf6] **25.Nxe3** And now Nf5 would win. **25...Ne5** [Black should try 25...Ra8 26.Rxa8 Rxa8] **26.Qg3** White has strong compensation. **26...Qc5** [26...Ra8] **27.Nf5+** Hoping for Ne7+. **27...Rfe8** [27...Ra8] **28.Kh2 Kf8** [28...Ra8 29.f4 Rxa1 30.Bxa1 Nbd7] **29.Nd4 Nbc4?** [29...Ra8 was called for.] **30.bxc4** White is clearly winning. **30...Nxc4 31.Nb3 Qc7 32.Bd4 Ra8 33.Rxa8 Rxa8 34.Qf4 Ne5 35.Qf6** Strongly threatening Bxe5. **35...Ra3 36.Bxe5** Threatening mate with Nc5! **36...dxe5 37.d6 Qd8** An entertaining game by Tineo. Weighted Error Value: White=0.39/Black=0.85. Mistake: White=3 Black=9 Inaccurate: White=2 Black=3 OK: White=5 Black=1 Best: White=4 --- Strong: --- Black=1 **1-0**

3

**Green,A. (2200)  
Nandula,R. (1970)**

**1.e4 e6 2.d4 d5 3.Nc3 Bb4 4.e5 Ne7 5.Bd2 b6 6.Nb5** C16: French: 3 Nc3 Bb4 4 e5: Lines without ...c5. **6...Bxd2+ 7.Qxd2 a6** was the old line (7...0-0). **8.Na3** White is slightly better. **8...Nd7N** [8...c5= is superior.; Predecessor: 8...c5 9.c3 Nbc6 10.f4 cxd4 11.cxd4 b5 12.Nf3 Qa5 13.Bd3 Bd7 14.Qxa5 Nxa5 0-1 Jerez Perez,A (2420)-Moskalenko,V (2564) Catalunya-chT Barcelona 2011 (1)] **9.f4c5 10.Nf3** [10.c3] **10...cxd4!= 11.Nxd4 Nc5 12.Bd3 0-0 13.0-0 Nxd3 14.cxd3 Bb7** [14...Bd7might be stronger.] **15.Rac1 b5 16.Qb4** White is much more active. [Better is 16.Nac2] **16...Qb6 17.Qc5** Inhibits Nc6. Black is now going down-

hill. 17...Qxc5 18.Rxc5 Rfc8 **Dodges Rc7** 19.Rfc1 Rxc5 20.Rxc5 Rc8 Repels Rc7 21.Rxc8+ Nxc8 End-game. KBN-KNN [21...Bxc8 22.Nf3 Kf8] 22.Kf2 Kf8 23.Nb3 Nb6 [23...Ne7] 24.Nc5+ Bc8 25.Nc2 [25.Ke3+] 25...Na4 [25...Ke8] 26.Nxa4 bxa4 KB-KN 27.Ke3 Bd7 28.Kd4 f6 [28...h6 29.f5 exf5] 29.Kc5 Kd6 is the strong threat. 29...Bb5? [29...Ke7 is a better defense. 30.exf6+ Kxf6] 30.Kd6 Bxd3 31.Nd4 fxe5 32.fxe5 Kf7 33.Nxe6 White is clearly winning. 33...Bc4 [33...Bg6 34.Kxd5 (34.Ng5+ Ke8+) 34...Bf5] 34.a3 h5 35.Nd4 And now e6+ would win. 35...g5 36.g3 [36.e6+ Ke8 37.Nf5] 36...g4 37.e6+ Ke8 38.Ke5 Ke7 39.Nf5+ Ke8 40.Kf6 Bb5 41.Nd6+ Weighted Error Value: White=0.29 (precise) / Black=0.43. Mistake: White=3 Black=8 Inaccurate: White=1 Black=4 OK: White=14 Black=6 Best: White=1 Black=1 Strong: --- Black=1 1-0

4

**Zelnick,D. (2104)**  
**Haskin,Z. (1991)**

1.e4 c5 2.Nf3 Nc6 3.Bb5 Nf6 4.Bxc6 dxc6 5.d3 Bg4 6.Nc3 g6 7.h3 Bxf3 8.Qxf3 Bg7 9.0-0 0-0 B31: Sicilian: 2...Nc6 3 Bb5 g6. 10.Be3 b6 11.a4 a5 White has an edge. 12.Rfd1N [Predecessor: 12.Rad1 e5 13.Bg5 Qd6 14.Nb1 Nh5 15.Nd2 Nf4 16.Bxf4 exf4 17.Rfe1 Rfe8 18.Re2 0-1 Buchal,S (2330)-Srienz,C (2197) EU-ch 8th Dresden 2007 (9)] 12...Ne8 13.g4 e5 14.Ne2 Nc7 15.Qg3 Ne6 16.c3 [16.h4=] 16...Ra7 17.f4 exf4 18.Nxf4 Nxf4 [Black should try 18...Qd6 ...Be5 would now be deadly. 19.Ne2 Qe7] 19.Bxf4 Rd7 20.Qe3 Re8 21.Rd2 Qe7 22.Re1

Red8 [22...Qe6!] 23.Bg5= Bf6 24.Bxf6 Qxf6 25.e5 Qe6 26.Rf1 Rd5 27.Rf6 Qxe5 28.Qxe5 Rxe5 29.Rxc6 Re6 30.Rxe6 fxe6 End-game. KR-KR 31.Kf2 Kf7 32.Ke3 h6 33.b3 Rb8 34.d4 cxd4+ 35.Kxd4 Rd8+ 36.Ke3 Rd5 [36...Rxd2= 37.Kxd2 g5] 37.Rxd5!+- exd5 KP-KP 38.Kd4 Ke6 39.c4? [White has to play 39.b4!+- Strongly threatening bxa5. 39...Kd6 40.bxa5 bxa5 41.c4 dxc4 42.Kxc4] 39...dxc4= 40.Kxc4 [40.bxc4!? Kd6 41.h4=] 40...Kd6 41.Kb5 Kc7 42.Ka6 Kc6 43.Ka7? [43.h4=] 43...Kc7? [Black should play 43...Kc5+ aiming for ...b5. 44.Ka6 g5] 44.h4 g5 45.h5 Black continues to play with concentration. [45.hxg5= hxg5 46.Ka6] 45...Kc6+- 46.Kb8 Kc5 47.Kc7 b5 48.Kd7 bxa4 49.bxa4 K3P-K3P 49...Kb4 50.Ke6 Kxa4 K3P -KPP 51.Kf5 Kb5 52.Kg6 a4 53.Kxh6 a3 54.Kxg5 KPP-KP 54...a2 55.Kh6 a1Q [55...a1B 56.g5 Be5 57.g6 Bf4+ 58.Kh7 Kc4 59.h6 (59.g7 Be5 60.g8Q+ Kd3 61.Kg6 Kc3 62.h6 Bd4 63.Qd5 Be3) 59...Bg5 60.g7] 56.g5 Qh8+ [56...Kc4 57.Kh7 Qe5 58.g6 Qxh5+ 59.Kg7 Qf5 60.Kh8 Kd5 61.Kg8 Qxg6+ 62.Kh8 Qg5 63.Kh7 Ke6 64.Kh8 Kf6 65.Kh7 Qg7#] 57.Kg6 Kc6 58.h6 Kd6 59.h7 Ke6 [59...Ke5 60.Kh5 Kf5 (60...Qxh7+ gets mated. 61.Kg4 Qh1 62.Kg3 Ke4 63.Kg4 Qf3+ 64.Kh4 Kf4 65.g6 Qh1#) 61.Kh4 Kf4 (61...Qxh7+ is a self mate. 62.Kg3 Qh1 63.g6 Ke4 64.Kg4 Qg1+ 65.Kh4 Kf4 66.Kh5 Qh2#) 62.Kh3 Kf3 (62...Kxg5 63.Kg3 Qxh7 64.Kf3 Qd3+ 65.Kg2 Kf4 66.Kf2 Qd2+ 67.Kf1 Kg3 68.Kg1 Qg2#; 62...Qxh7+ 63.Kg2 Qc2+ 64.Kh1 Kg3 65.Kg1 Qg2#) 63.Kh2 Qe5+ (63...Qxh7+? 64.Kg1 Qc2 65.Kh1 Qg2#) 64.Kh1 Qxg5 65.h8Q Qg2#] 60.Kh6 Kf7 61.g6+

Kf6 (...Qc8) 62.Kh5 Qg7 Weighted Error Value: White=0.57/ Black=0.59. Loses game: White=2 Black=1 Missed win: White=1 Black=1 Mistake: White=1 Black=2 Inaccurate: White=4 Black=2 OK: White=10 Black=15 Best: White=2 Black=2 Strong: White=1 --- 0-1

5

**Zhang,E. (2052)**  
**Dejmek,M. (2093)**

1.e4 c5 2.Nf3 d6 3.d4 cxd4 4.Nxd4 Nf6 5.Bb5+ Nbd7 6.c4 B55: Sicilian: 2...d6 3 d4 cxd4 4 Nxd4 Nf6 5 f3. 6...a6 7.Bxd7+ Bxd7 8.Nc3 [8.Qd3!= feels stronger.] 8...e5N [8...Rc8!; Predecessor: 8...e6 9.0-0 Be7 10.a4 0-0 11.b3 b5 12.cxb5 axb5 13.Ndxb5 Nxe4 14.Nxe4 Bxb5 1-0 Antipov,M (2609)-Kevlishvili,R (2495) FIDE World Uni Rapid 1st Tornado INT 2021 (1)] 9.Nc2 Rc8 10.Qd3 h6 [10...Qc7=] 11.a4 Be7 12.0-0 0-0 13.b3 [13.Ne3] 13...Be6 [13...b5!= remains equal.] 14.Rd1 Qc7 15.Ba3 Rfd8 16.Ne3 Bf8 17.h3 g6 [Better is 17...Qb6] 18.g4 [18.Qe2] 18...b6 [18...Qb6] 19.Rd2 Qb7 20.f3 Qa7 21.Kg2 Qb7 22.Qe2 Kg7 23.Ra1 Ne8 24.Kg3 White is more active. 24...Rd7 25.Nf5+ gxf5 26.exf5 [Don't do 26.gxf5?! Be7] 26...Qc7? Black cannot hold the game after this. [26...Bxc4 27.bxc4 Qc6] 27.fxe6+- fxe6 28.Qxe5+ dxe5 White is clearly winning. 29.Rxd7+ Kf6 [29...Kg8] 30.Ne4+ Kg6 31.Rxc7 Nxc7 32.Bxf8 Rxf8 End-game. KRN-KRN 33.Rd7 Rf7 34.Rd6 b5 35.Nc5 bxc4 36.bxc4 Kf6 37.Rb6 Rf8 38.Nd7+ A fantastic game! Weighted Error Value: White=0.72/Black=0.46. Loses game: --- Black=1 Mistake: White=3 Black=6 Inaccurate: White=1

Black=4 OK: White=8 Black=4 Best:  
White=2 --- Brilliant: White=1 --- 1-0

6

**Miller,C. (2002)**  
**Meng,J. (2091)**

**1.d4 Nf6 2.c4 d6 3.Nf3 Nbd7**  
**4.Nc3 e5 5.e4 g6 6.g3 Bg7 7.Bg2 0**  
**-0 8.0-0 c6 9.h3 Qe7 10.d5** E69:  
King's Indian: Fianchetto: 6...Nbd7  
7 0-0 e5 8 e4 c6 9 h3. [10.Re1]  
10...c5 [10...Nc5=] **11.Rb1 Ne8**  
**12.g4N** White is better.  
[Predecessor: 12.Ne1 f5 13.Nd3  
Nef6 14.f3 Nh5 15.Ne2 f4 16.gxf4  
exf4 17.Ndxf4 Nxf4 18.Bxf4 Rxf4  
19.Nxf4 1-0 Manojlovic,S (2047)-  
Hammar,B (2171) EU-cht Seniors  
50 Novi Sad 2017 (7.2)] **12...f5**  
[12...h6deserves consideration.]  
**13.gxf5 gxf5 14.Ng5?** [14.exf5 h6  
15.Nd2] **14...f4!** **15.Ne6** [Better is  
15.Nf3] **15...Rf6 16.Bf3** [16.Kh2]  
**16...Nf8** [Black should play  
16...Rh6+ 17.Bg2 Ndf6] **17.Bg4**  
[17.Nxg7? Qxg7+ 18.Kh2 (18.Bg4?  
h5+ Pin) 18...Rh6+ ] **17...Rg6**  
**18.Kh2 Nxe6 19.dxe6 Bxe6**  
[19...Nf6! Threatens to win  
with ...Nxg4+. 20.Bf5 Bxe6  
21.Bxg6 hxg6] **20.Nd5 Qf7**  
[20...Qd7 simplifies 21.Bxe6+ Rxe6  
22.Qg4 Rd8] **21.Bh5** [21.Bxe6  
Qxe6 22.Bd2] **21...Nf6!** White  
must now prevent ...Nhx5.  
**22.Bxg6 hxg6 23.Nc3** Now White is  
beyond hope. [23.Re1] **23...g5+**  
[23...Bxc4 24.Rg1] **24.Rh1 g4** And  
now ...Qg6 would win. [24...Bxc4  
25.b3 Be6 26.Rb2] **25.h4?** [25.b4]  
**25...Bxc4** aiming for ...b5.  
**26.Qxd6?** White is weak on the  
light squares [26.b3 Be6 27.Rb2  
(27.Qxd6? g3+ 28.Kg2 f3+  
29.Kxg3 Nxe4+ Remove Defender  
30.Nxe4 Qf5+ ) ] **26...g3+ 27.fxg3**  
**Ng4+** [27...Bxa2? 28.Qd3 Bxb1

29.Nxb1+] **28.Kg2 f3+** [28...Bxa2  
29.gxf4 Bxb1 30.Nxb1 exf4  
31.Rf1] **29.Kh3 Nf2+ 30.Kh2 Nxb1**  
[30...Bxa2 31.Rf1 Ng4+ 32.Kh3]  
**31.Nd5 f2 32.Ne7+ Qxe7!!**  
**33.Qxe7 f1Q** (...Qf2+) [33...f1R  
34.Bh6 Rf2+ (34...Bxh6? 35.Rxf1  
Bxf1 36.Qe6+ Kg7 37.Qe7+ Kg8  
38.Qe6+ Kh7 39.Qf7+ Kh8  
40.Qf6+ Kh7 41.Qxf1+) 35.Kxh1  
Bxh6 36.Qxc5=] **34.Bh6 Qe2+**  
[34...Bxh6? 35.Rxf1 Bxf1 36.Qe6+  
Kh7 (36...Kg7? 37.Qxe5+ Kg8  
38.Qe6+ Kg7 39.h5+) 37.Qf7+  
Kh8 38.Qf6+ (38.Qxf1 Nxg3  
39.Qf6+ Bg7) 38...Kh7 39.Qxf1+  
(39.Kxh1 Ba6= ) ] **35.Kxh1 Qxe4+**  
**36.Kh2 Qc2+ 37.Kh3 Qf5+ 38.Kg2**  
**Bd5+ 39.Kh2 Qf2+ 40.Kh3 Bg2+**  
[40...Qg2+ 41.Kg4 Bf3+  
(41...Bxh6? 42.Kf5+) 42.Kf5 Qh3+  
(42...Bxh6 43.Qe6+ Kh8 44.Qxh6+  
Kg8 45.Qg6+ Kh8 46.Qh6+ Kg8  
47.Qg6+ Kh8 48.Qh6+=) 43.Kg6  
Qg4+ 44.Bg5 Qe4#] **41.Kg4 Qf3+**  
**42.Kg5 Qxg3+ 43.Kf5 Rf8+**  
[43...Qd3+ 44.Kg5 Qe3+  
(44...Qxb1 45.Qxg7#) 45.Kh5 Bf3+  
(45...Qxh6+ gets mated. 46.Kg4  
Qf4+ 47.Kh5 Qf5+ 48.Qg5 Bf3#)  
46.Kg6 Qe4+ 47.Kg5 Qg4#]  
**44.Ke6 Qg6+** A cool game by  
Meng. Weighted Error Value:  
White=1.88/Black=0.58. Mistake:  
White=7 Black=4 Inaccurate:  
White=4 Black=1 OK: White=2  
Black=7 Best: White=1 Black=1  
Strong: --- Black=2 0-1

7

**Revellon,L. (2011)**  
**Lad,N. (2059)**

**1.d4 Nf6 2.Nf3 g6 3.c4 Bg7 4.g3 0-**  
**0 5.Bg2 c6 6.0-0 d5 7.cxd5 cxd5**  
**8.Nc3 Ne4 9.Bf4 Nxc3 10.bxc3**  
**Nc6 11.Rb1** D78: Fianchetto Grün-  
feld: 6 0-0 c6. **11...b6 12.Qa4**

**Bd7N** Strongly threatening ...Nxd4!  
[Predecessor: 12...Bb7 13.Ne5  
Nxe5 14.Bxe5 Bxe5 15.dxe5 Qc7  
16.c4 dxc4 17.Bxb7 Qxb7 18.Qxc4  
Rac8 ½-½ Goncalves,D (2282)-  
Korchmar,V (2438) Titled Tuesday  
intern op 25th Oct Late Chess.com  
INT blitz 2022 (7)] **13.Qa3** The  
position is equal. **13...Bf5 14.Rb2**  
[14.Rbd1=] **14...Be4** [14...Na5 aim-  
ing for ...Nc4. 15.Nd2 Qd7] **15.Nd2**  
**Bxg2 16.Kxg2 Na5 17.Rc2**  
[17.Qa4] **17...Rc8** [17...Qd7]  
**18.Rfc1** [18.Nb3!= deserves con-  
sideration.] **18...Qd7 19.e4** [Better  
is 19.h4] **19...dxe4 20.Nxe4 Rc6**  
[20...Nc4 21.Qb3 Rfe8] **21.f3**  
[21.Re2=] **21...Rfc8 22.d5 Qxd5**  
[22...Rc4+ White must now pre-  
vent ...Ra4! 23.Re2 Ra4 (23...Qxd5  
24.Qxe7 Nc6 25.Qd6) ] **23.Qxe7**  
**Re6! 24.Qxa7 Ra8?** [24...Nc4! stays  
on course. 25.Rf2 h6] **25.Qc7?**  
[25.Rd1! is necessary to keep the  
advantage. 25...Qc6 (25...Qxd1  
26.Qxa8+; 25...Qxe4? 26.fxe4  
Ree8 27.Qxb6+) 26.Qd7] **25...Rc6**  
[25...Nc4! ...Rae8 would now be  
deadly. 26.Re2 Rae8 (26...f5  
27.Rd1=) ] **26.c4?** [26.Qe7= and  
White stays safe.] **26...Qd3?** [Black  
should try 26...Qe6!+ 27.Ng5 Qe8  
28.Qxf7+ Qxf7 29.Nxf7 Kxf7]  
**27.Qe7= Re6! 28.Qg5 Rxe4**  
[28...f5= keeps the balance.  
29.Rd2 Qa3 30.Rd8+ Re8  
31.Rxe8+ Rxe8 32.Nf6+ Bxf6  
33.Qxf6 Re2+ (33...Qxa2+?  
34.Kh3+-) 34.Kg1 Qc5+  
(34...Qxa2? 35.Qd8+ Kg7 36.Qd7+  
Kg8 37.g4+) 35.Kh1 Qf2 36.Qd8+  
Kg7 37.Qd7+ Kh8 38.Qd8+ Kg7  
39.Qd7+ Kh8 40.Qd8+ Kg7]  
**29.fxe4 Qxe4+ 30.Kh3 Qd5** is the  
strong threat. 30...Qe6+ [30...Nc6!]  
**31.Qg4+- Qc6 32.Qd1 Re8**  
[32...Qc8+ 33.Qg4 Qc6] **33.Qd5**  
**Qc8+ 34.Kg2 Rd8** Prevents c5

35.Qf3 h6? [35...Nc6] 36.c5 b5 [36...bxc5 37.Rxc5 Qa6] 37.c6 g5 38.c7 Re8 39.Re2! Rxe2+ 40.Qxe2 gxf4 41.Qe7 Qd8+ would kill now. 41...f3+ 42.Kxf3 White threatens Qd8+ and mate. 42...Bf8 43.Qd8 Qf5+ 44.Ke2 Qe4+ 45.Kd1? [45.Kf2+- Nb7 46.Qxf8+ Promotion (46.c8Q Nxd8 47.Qxd8 Qe6+-) 46...Kxf8 47.c8Q+ Kg7 48.Qc3+ f6 49.Qc7+ Kg6 50.Qd7 Qf5+ 51.Qxf5+ Kxf5 52.Rc6] 45...Qf3+ 46.Kc2 [46.Kd2!? Qf2+ 47.Kc3 (47.Kd3 Qf3+ 48.Kd4 Qf2+ 49.Ke4 f5+ 50.Ke5 Qe3+ 51.Kf6 Qg5+ 52.Ke6 Qe3+ 53.Kd7 Qd2+ 54.Ke8 Qe3+ 55.Kd7 Qd2+ 56.Ke8 Qe3+ 57.Kd7=) 47...Qc5+ (47...Qxh2? 48.c8Q+-) 48.Kd3=] 46...Qe4+? [46...Nc4= 47.c8Q (47.c8R? Qf2+ 48.Kd3 Qd2+ 49.Ke4 Qe3+ 50.Kd5 Qe6+ 51.Kd4 Qe5+ 52.Kd3 Qe3+ 53.Kc2 Qf2+ 54.Kd3 Qf3+ 55.Kc2 Qf2+-) 47...Qf2+ 48.Kd3 Qf3+ 49.Kd4 (49.Kc2 Qf2+ 50.Kd3 Qf3+ 51.Kd4 Qe3+ 52.Kd5 Qf3+ 53.Kd4 Qe3+ 54.Kd5 Qf3+ 55.Kd4=) 49...Qe3+ 50.Kd5 Qf3+ 51.Kd4 Qe3+ 52.Kd5 Qf3+ 53.Kd4] 47.Kb2? [47.Kd2+- Nb7 48.Qxf8+ (48.c8Q Nxd8 49.Qxd8 Qg2+ 50.Ke3 Qxh2) 48...Kxf8 49.c8Q+ (49.c8R+? Kg7+-) 49...Kg7 50.Qc3+ Kg8 51.Rd1] 47...Qb4+= 48.Kc2 Dancing on a razor blade. Active counter play! [48.Ka1!? Nb3+ 49.axb3 Qa3+ 50.Kb1 Qxb3+ 51.Ka1 Qa3+ 52.Kb1 Qb3+ 53.Ka1 Qa3+ 54.Kb1 Qb3+=] 48...Qa4+? [48...Qe4+= 49.Kd2 Nb7 50.Qxf8+ Promotion (50.c8Q Qg2+ 51.Ke3 Nxd8=) 50...Kxf8 51.c8Q+ (51.c8R+? is the wrong capture. 51...Kg7+-) 51...Kg7] 49.Kd3+- Qa3+ 50.Rc3 Qxa2 51.c8Q Qb1+ 52.Ke3 Qe1+ 53.Kf3 Qf1+ 54.Kg4 Qe2+ 55.Rf3 Qe4+ 56.Rf4 Qe2+ 57.Kh3 Qh5+ 58.Qh4

Weighted Error Value: White=0.56/ Black=0.79. Loses game: White=1 Black=4 Missed win: White=2 Black=1 Mistake: White=7 Black=9 Inaccurate: White=3 Black=1 OK: White=11 Black=11 Best: White=2 Black=1 Strong: --- Black=1 1-0

8

Winchell,B. (2139)  
Fang,E. (2111)

1.e4 c5 2.c3 d5 3.exd5 Qxd5 4.d4 Nf6 5.Nf3 Nc6 6.Be3 cxd4 7.Nxd4 B22: Sicilian: 2 c3. [7.cxd4= Qd6 8.Nc3] 7...Nxd4 [7...Bd7] 8.Qxd4 [8.cxd4 Qd8 9.Nd2] 8...e5= 9.Qxd5 The position is equal. 9...Nxd5 10.Bb5+ Bd7 11.Bxd7+ Kxd7 12.Ke2 Nxe3 13.fxe3N [Predecessor: 13.Kxe3 Rc8 14.Nd2 f5 15.Nf3 Ke6 16.Rad1 Bc5+ 17.Ke2 Rhd8 18.h4 Kf6 19.Rhe1 0-1 Birgelir,M (1735)-Patel,Y (1804) TUR-chT Konya 2011 (13)] 13...Ke6 14.c4 Rc8 15.b3 b5! 16.Nd2 Bb4 aiming for ...Bxd2. 17.Rac1 Bxd2 18.Kxd2 Endgame. KRR-KRR 18...Rhd8+ 19.Kc3 White is on the road to losing. [19.Ke2] 19...bxc4 20.bxc4 Rd6 21.Rhd1 Ra6 Black is more active. 22.Rd2 [22.a4] 22...Rxc4+!!+- Decoy 23.Kxc4 Rc6+ Skewer 24.Kd3 Rxc1 KR-KR 25.Rb2 Rc6 26.a4 [26.Rb4] 26...Rb6 27.Rxb6+ [27.Rc2] 27...axb6 KP-KP 28.Kc4 f5 29.Kb5 [29.h4 Kd6 30.Kb5] 29...e4 30.g3 g5 ...f4! is the strong threat. 31.Kc4 f4! 32.exf4 [32.gxf4 gxf4] 32...gxf4 33.Kd4 f3 34.Ke3 h5 ( ...Kd5) 35.h3 Ke5 Black mates. 36.Kf2 Kd4 37.Ke1 e3 38.Kf1 Kd3 Weighted Error Value: White=1.16/ Black=0.06 (flawless) . Mistake: White=6 Black=1 Inaccurate: White=3 ---OK:White=7 Black=12 Best: --- Black=3 Brilliant: ---

Black=1 0-1

9

Haskin,Z. (1991)  
Green,A. (2200)

1.e4 c5 2.Nc3 e6 3.f4 d5 4.Nf3 dxe4 5.Nxe4 Nf6 6.Nxf6+ B21: Sicilian: 2 f4 and Morra Gambit. 6...Qxf6 7.g3 Nc6 Prevents Ne5. 8.Bg2 The position is equal. 8...Bd6 9.0-0 0-0 10.Rb1 Rb8 11.b3N [Predecessor: 11.Ng5 Qd4+ 12.Kh1 Be7 13.b3 Qd8 14.Bb2 Bxg5 15.fxg5 Qxg5 16.Bxc6 bxc6 17.Qe2 ½-½ Page,M (2096)-Slade,T (1962) GBR-ch 102nd Coventry 2015 (3)] 11...Nd4 12.Bb2 Nxf3+ [12...b5=] 13.Bxf3 [13.Qxf3Qg6 14.Qc3] 13...Qe7 14.Qe2 b6 15.Rbe1 Bb7 [15...b5=] 16.f5! e5 [16...Bc8] 17.Bxe5 [17.f6+- gxf6 18.Bxb7 Rxb7 19.Rf5] 17...Bxe5 [17...Bxf3 18.Rxf3 Bxe5] 18.Qxe5 Qd7 19.Bxb7 Rxb7 20.Rf2 [20.d3+] 20...f6 21.Qe6+ Qxe6 22.Rxe6 Endgame. KRR-KRR [But not 22.fxe6 Re7] 22...Rd8 23.d3 Kf7 24.Rfe2 [24.Kg2+] 24...Rd5 [24...h5] 25.g4+- g6 26.fxg6+ hxg6 27.Kg2 Rbd7 28.Kg3 [28.a4+-] 28...g5 29.R6e3 [29.a4+] 29...Rd4 [29...b5 30.h4 gxh4+ 31.Kxh4 Rg5] 30.Rf2 Re7 31.Rfe2 [31.Rxe7+ Kxe7 32.h4] 31...Rxe3+ [31...Red7!+= keeps the balance.] 32.Rxe3= KR-KR 32...Rf4 [32...b5 33.h4 f5 34.gxf5 (34.hxg5? perishes. 34...f4+ 35.Kf3 fxe3+-) 34...gxh4+ 35.Kh3 Kf6] 33.Rf3 Rd4 34.h3 Rd6 [34...Rd7 was called for. 35.h4 gxh4+ 36.Kxh4 Kg6] 35.a4 [35.Kf2+] 35...Rd4 36.Kf2 Ke6 37.Ke3 Rd8 [37...Rb4 38.a5 Rb5] 38.Kd2 Rd4 39.c3 [39.Rf5+-] 39...Rd8 [39...Rd5 might work better. 40.Re3+ Kd7]

40.Ke3+- Rd5 41.d4 Prevents Re5+. 41...cxd4+ 42.cxd4 Ke4 is the strong threat. 42...b5? [42...Rd8 is a better defense. 43.Kd3 Rf8] 43.axb5? [43.Ke4+- is the precise move to win. 43...bxa4 44.Rf5 (44.bxa4 Ra5) ] 43...Rxb5 44.Ke4 And now d5+! wins. 44...a5? [44...Kf7 45.Rc3 a5] 45.Rc3? [45.d5+- Ke7 46.Kd4] 45...Kd6 46.Rf3? [46.Rg3] 46...Ke6!= 47.d5+! Ke7 48.Kxb3 Rb4+ 49.Kc5 Kd7 50.Rxf6 Rxd3 51.Rf7+ Ke8 52.Ra7 [52.Rg7!+] 52...Rxb3 53.Rxa5 White is more active. [53.Kd6] 53...Rg3= 54.Ra4! Kd7 55.Re4 Rg1? [Better is 55...Rg2+- 56.Rc4 Rg1] 56.Ra4 [White should try 56.d6] 56...Rg2 [56...Rg3!=] 57.Ra7+ [57.d6] 57...Ke8? [57...Kc8=] 58.Ra4? [White must play 58.Kc6!+- Rg1 59.d6 Rc1+ 60.Kd5] 58...Kd7! 59.d6! Black is now going downhill. 59...Rc2+? [59...Ke6] 60.Kd5+- Rd2+ 61.Ke5 Ra7+ would be deadly. 61...Re2+ 62.Kf6 Rf2+ 63.Kxg5 Kxd6 64.Re4 Kd5 65.Rf4 Ra2 66.Kg6 [66.Kf6] 66...Ke5 67.Rf5+ Ke6 68.g5 Rg2 69.Rf1 Ke7 70.Kh6 Rg3 71.g6 aiming for g7. 71...Rg2 72.Kg7 Rh2 73.Re1+ Kd7 74.Re4 [74.Re5 White wants to mate with Kf6. 74...Rf2 75.Rh5] 74...Rf2 75.Kg8 Hoping for g7. 75...Rg2 76.g7 Rf2 77.Rh4 Ke7 78.Kh8 Weighted Error Value: White=0.62/ Black=0.40. Loses game:--- Black=3 Missed win: White=3 --- Mistake: White=14 Black=14 Inaccurate: White=1 Black=4 OK: White=13 Black=13 Best: White=4 Black=4 Strong: White=1 Black=2 Brilliant: White=1 --- 1-0

Meng,J. (2091)  
Zhang,E. (2052)

10

1.e4 c5 2.Nc3 e5 3.Bc4 Nc6 4.Nge2 Na5N [Predecessor: 4...Nd4 5.0-0 ½-½ Blohberger,F (2503)-Sychev,K (2550) Wch Rapid Warsaw 2021 (3)] 5.d3 Nxc4 6.dxc4 B23: Closed Sicilian: Lines without g3. 6...d6 7.Ng3 Be6 8.b3 White is better. 8...Be7 9.Nh5 g6 [9...Bf8] 10.Ng7+- Kd7 11.Be3 Kc6 [11...Nf6] 12.Nxe6 fxe6 13.Qg4 Against Bg5 [13.f4+-] 13...Qd7 14.0-0 Nf6 15.Qe2 Rac8 [15...h5 16.Rad1 Raf8] 16.Rfd1 b6 [16...a6 17.Rab1 Kc7] 17.a4 a5 18.Nb5 Kb7 19.f3 Qc6 20.Bg5 Bxf6 would now be deadly. 20...Rcd8 21.Rd3 h6 22.Bxf6 Bxf6 Black is weak on the light squares 23.Rad1 Be7 24.Qd2 Bg5 25.Qc3 [25.Nxd6+? too greedy. 25...Rxd6 26.Rxd6 Bxd2+-] 25...Be7 26.Qd2? [26.Kf2+-] 26...Bg5= 27.Qf2 [27.Nxd6+? perishes. 27...Rxd6 28.Rxd6 Bxd2+-] 27...Be7 28.Qg3 g5 29.Qg4 Qd7 30.Qh5 White has more active pieces. 30...Qe8 Against Qg6 31.Nxd6+ Bxd6 32.Qxe8 Rf8 Wards off Qf7+ [32...Rhxe8 33.Rxd6 Rxd6 34.Rxd6 Kc7] 33.Qxd8!! Rxd8 34.Rxd6 Re8 Weighted Error Value: White=0.32/ Black=0.28 (precise). Loses game: -- Black=1 Missed win: White=1 --- Mistake: White=1 Black=4 Inaccurate: White=2 --- OK: White=9 Black=11 Best: White=1 Black=2 1-0

11

Gardezi,A.(2186)  
Revellon,L. (2011)

1.Nf3 d5 2.b3 Nf6 3.Bb2 c5 4.e3 Nc6 5.d4 cxd4 6.exd4 Bg4 7.Be2 e6 D04: Colle System. 8.Nbd2 Bd6 9.0-0 0-0 The position is equal. 10.c4 Rc8 11.Rc1 [11.Ne5= Bxe2 12.Qxe2] 11...Bb8 [11...Bf4]

12.h3N [Predecessor: 12.Re1 Ne4 13.cxd5 exd5 14.Ne5 Nxe5 15.dxe5 Rxc1 16.Qxc1 Bxe2 17.Rxe2 Nxd2 18.Qxd2 Re8 ½-½ Zallio,L (2163)-Kaganskiy,G (2279) Titled Tuesday intern op 06th July Chess.com INT blitz 2021 (7)] 12...Bh5 13.Ne5 Bxe2 14.Qxe2 dxc4 15.Rxc4 Nxe5 16.dxe5 Nd5 17.Ne4 Rxc4 18.bxc4 Nf4 [18...Ne7= remains equal.] 19.Qe3! Ng6 20.Ba3! Re8 21.Nd6! Re7 22.c5! Qa5 [22...Qc7] 23.Rb1 [23.Qb3] 23...Qa6 [23...Nxe5! 24.Nxb7 (24.Rxb7? Bxd6 25.Rb4 Bc7+-) 24...Qa4] 24.Rb3? [24.c6+-] 24...Qc6 25.f4! Rd7 26.g4 [26.Qf3Qxf3 27.Rxf3] 26...Qd5= 27.Rb2 Nh4 28.Kh2 h6 29.Kg3 Ng6 30.Rd2 [30.Qf3!? Qd4 31.c6 (31.Nxb7? Nxe5 32.Qf2 Qc3+ 33.Kg2 Nd3+-) 31...Qg1+ 32.Rg2 Qe1+ 33.Qf2 (33.Kh2 bxc6 34.Re2 Qd1) 33...Qc3+ 34.Qf3 Qe1+ 35.Qf2 (35.Kh2 bxc6 36.Re2 Qd1) 35...Qc3+ 36.Qf3 Qe1+=] 30...Qh1 31.f5 Active counter play! [31.Rg2=] 31...exf5 [31...Ne7] 32.gxf5 Rh2 is the strong threat. 32...Ne7 33.Qf2 [33.Rf2=] 33...f6! 34.Bb2 fxe5 35.Bxe5 Nc6 [35...b6! White must now prevent ...bxc5. 36.f6 (36.cxb6 axb6 37.a4 Nd5+-) 36...Ng6] 36.Bf4= Bxd6 [Better is 36...Re7=] 37.cxd6 And now Qe3 would win. 37...Qe4 38.Qc5! Qe1+ [38...Kf7!] 39.Kh2 Qd5+ would now be deadly. 39...Kh7 [39...Qe4 keeps fighting. 40.Bg3 Kh7] 40.f6? Qe4= 41.Qf2± White is not keeping still 41...gxf6 42.Qh4 Rg7 Repels Rg2 [42...Ne5!= and Black has nothing to worry. 43.Qxh6+ (43.Qxf6? Nf3+ 44.Kg3 Rg7+-) 43...Kg8 44.Rg2+ (44.Qxf6? Nf3+ 45.Kg3 Rg7+-) 44...Kf7] 43.Qxh6+- Kg8 44.d7 [44.Qxf6 Rf7 45.Qg5+



Rg7 46.Qd5+ Qxd5 47.Rxd5 Rd7+- ] **44...Qe7** [44...Qf5 45.d8Q+ (45.d8B Ne5=; 45.d8R+ Nxd8 46.Rxd8+ Kf7+-) 45...Nxd8] **45.Qh5 Nd8 46.Qe8+** [46.Re2 Qf8 47.Re8 Pin 47...Rxd7 48.Bd6 Pin (48.Rxf8+ Kxf8 49.Bc1 Nf7+-; 48.Qg6+ Rg7+-) 48...Qxe8 49.Qxe8+ Kg7 50.Qxd7+ Nf7 51.Qg4+ (51.Qxb7 Kg6 52.Qe4+ Kg7 53.Qe7 Kg6 54.Qe8 Kf5 55.Qxf7 Ke4 56.Qc4+ Ke3) 51...Kh7 52.Bf8] **46...Kh7 47.Re2** [47.Rd5 Rf7 48.Rh5+ Kg6 49.Rh4 (49.Qg8+ Rg7+-) 49...Qxd7 50.Qe4+ Kg7 51.Bh6+ Kg8 52.Rg4+ (52.Qg6+ Rg7+-) 52...Qxg4 53.hxg4] **47...Qxd7?** [47...Qc5 48.Bg3 (48.Qxd8? Qg1#; 48.Rg2 Qf5) 48...Qg5 49.Qe4+ (49.Rg2 f5+-) 49...Qg6] **48.Qh5+** Weighted Error Value: White=0.63/Black=0.35. Loses game: --- Black=2 Missed win: White=1 --- Mistake: White=6 Black=9 Inaccurate: White=1 Black=2 OK: White=10 Black=13 Best: White=1 Black=2 Strong: White=5 Black=1 **1-0**

12

**Barnes,M. (2067)**  
**Miller,C. (2002)**

**1.Nf3 Nf6 2.b3 g6 3.Bb2 Bg7 4.g3 0-0 5.Bg2 d5 6.c4 c6 7.d3 a5** is recently more successful than 7...Bg4. **8.0-0 a4 9.cxd5** A11: English Opening: 1...c6. [9.bxa4 dxc4 10.dxc4 Qxd1 11.Rxd1 Rxa4] **9...cxd5 10.b4 b5N** [Predecessor: 10...Qd6 11.a3 Nbd7 12.Nc3 Nb6 13.Qc2 Bd7 14.e4 Qc7 15.Rac1 dxe4 16.dxe4 Rfc8 ½-½ Zubritskiy,A (2468)-Li,G (2324) Moscow Aeroflot op-A 2024 (1)] **11.a3** White is slightly better. **11...Nc6 12.Nbd2 Qb6 13.Rc1 Bb7 14.Rc5**

**e6** White leaves nothing to chance now. [Black should play 14...Rfc8] **15.Qa1+- Ne8 16.Bxg7 Nxg7 17.Rfc1** White is more active. **17...Rfd8** [17...Rac8 18.e4 f6] **18.Nd4 Nxd4** [18...Na7] **19.Qxd4 Nf5** [19...e5 20.Qxe5 Re8] **20.Qf6 Rd7 21.h4 h5** [21...Qd8 keeps fighting. 22.Qb2 Rc8] **22.Bh3 Ng7 23.Nf3** Black must now prevent Ne5. **23...Ne8 24.Qf4** Threatens to win with Qh6. **24...Nd6?** [24...Kg7 25.Nd4 Qd6] **25.Qh6 Qd8** [25...Nf5 26.Bxf5 exf5] **26.Ng5** White is clearly winning. **26...Qf6 27.Qh7+ Kf8 28.Nxe6+!** Pin **28...Ke7 29.Rc7 Nc4** Hoping for ...Rxc7. **30.Rxd7+** [Stronger than 30.dxc4 Rxc7 31.Nxc7 Rh8 32.Nxd5+ Bxd5=] **30...Kxd7 31.dxc4 bxc4 32.Nc5+ Ke7 33.Qh6** [33.Nxb7 Rh8 34.e4 (34.Qxh8? Qxh8 35.Rb1 Qc3+-) 34...Rhx7=] **33...Bc6 34.Qg5 Qxg5 35.hxg5 Kd6 36.e4! dxe4 37.Rxc4 Re8 38.Rd4+ Ke5 39.Rd1 h4 40.gxh4 Rh8 41.Bd7 Ba8 42.b5 e3 43.fxe3 Rxh4 44.Bc6 Bxc6 45.bxc6** Intending c7 and mate. **45...Rc4 46.Nd3+ Ke4 47.Rc1** Weighted Error Value: White=0.14 (very precise) /Black=0.54. Mistake: --- Black=7 Inaccurate: White=1 Black=1 OK: White=12 Black=4 Best: White=1 --- **1-0**

13

**Lad,N. (2059)**  
**Chen,T. (2081)**

**1.d4 g6 2.Bf4 Bg7 3.Nc3 d6 4.e4 a6 5.Qd2 b5 6.0-0-0 B06:** Modern Defence. **6...Bb7 7.f3** [7.h4is more appropriate.] **7...Nd7= 8.h4** The position is equal. **8...c5N** [Predecessor: 8...h6 9.g4 c5 10.dxc5 Nxc5 11.h5 g5 12.Be3 Rc8 13.Bd4 Bxd4 14.Qxd4 Nf6 1-0 Eden,J (2323)-Asadli,V (2572) Ti-

tled Tuesday intern op 02nd Feb Chess.com INT blitz 2021 (2)] **9.dxc5 Nxc5 10.Be3 Rc8** Strongly threatening ...b4. **11.Bd4** [11.Kb1=] **11...Bxd4 12.Qxd4 Nf6 13.Kb1 Qc7 14.g4 Ne6 15.Qf2 Qc5 16.Qxc5 Rxc5 17.a3 h5** Black is more active. [17...Nd7] **18.g5= Nd7 19.Nge2 Ne5↑** Black is pushing. **20.Bh3?** This costs White the game. [20.Rh3= and White is okay.] **20...Nxf3+ 21.Bxe6** [21.Bg2 is a better defense. 21...Ne5 22.Nd5] **21...fxe6 22.Nf4 e5** [Weaker is 22...Kf7 23.Rhf1 Nh2 (23...Nxb4 24.Nd3+ Discovered Attack (Check); 23...Rxc3 24.bxc3 Bxe4 25.Ne2) 24.Rf2] **23.Nxg6 Rg8 24.Rh3?** [24.Rd3 Nd4 25.Nf4] **24...Rxc3 25.bxc3 Bxe4** Black is clearly winning. **26.Nxe5 Nxe5 27.Re3 Bc6 28.Rde1 Rf8 29.g6 Rg8 30.Rxe5 dxe5 31.Rxe5 Rxg6 32.Rxh5** Endgame. **KRB-KR 32...Rg1+ 33.Kb2 Kd7 34.Rh8 Be4 35.h5 Rh1** White must now prevent ...Rh2. **36.h6 Rh2 37.Kb3 Bxc2+ 38.Kb4 Bd3 39.a4 Rh4+** Weighted Error Value: White=0.49/Black=0.15 (very precise). Loses game: White=1 --- Mistake: White=4 Black=1 Inaccurate: White=5 Black=1 OK: White=7 Black=12 Best: White=1 Black=4 **0-1**

14

**Javakhadze,Z. (2461)**  
**Fang,E. (2111)**

**1.Nf3 Nf6 2.g3 e6 3.Bg2 Be7 4.0-0 0-0 5.c4 d5 6.b3 d4 7.e3 c5** A14: English Opening: 1...e6 with b3 by White. **8.Ne5 Qc7 9.f4 Bd6** [9...Nfd7=] **10.exd4 cxd4 11.Nd3N** [Predecessor: 11.Ba3 Rd8 12.Bxd6 Rxd6 13.d3 Nc6 14.Nd2 Rd8 15.Ndf3 Bd7 16.Qd2 Be8 17.b4

Cuenca Jimenez,J (2553) Titled Tuesday intern op 7th Mar Late Chess.com INT blitz 2023 (2) **11...Nc6 12.Na3! Qe7** [12...Be7] **13.Nb5 Rd8 14.Nxd6 Qxd6 15.Qe2 b6 16.b4 Bb717.a4! Rac8 18.Ba3 Qc7 19.c5** [White should try 19.Rac1] **19...bxc5!** Threatens to win with ...Nxb4. **20.Nxc5 d3! 21.Qf2** Hoping for Nxb7. **21...Ba8 22.Rac1?** Now White is beyond hope. [22.Rfc1] **22...Ng4!+** [22...Nd4 23.Nxe6 (23.Nxd3 Nc2) 23...Ne2+ 24.Kh1=] **23.Qf3 h5** ...Nxb4! is the strong threat. [But not 23...Nce5? 24.Qd1+] **24.Qe4** [24.Nxd3? loses. 24...Qb6+ 25.Nf2 Nd4+ (25...Nxb4? 26.a5+; 25...Rxd2 26.Rc5); 24.Qd1 was worth a try.] **24...Nd4 25.Qe1** [25.Qxd3 Nf3+ Discovered Attack 26.Rxf3 Rxd3 27.Rxd3 Bxg2 28.Kxg2] **25...Ne2+** Excellent horsemanship. **26.Kh1 Bxg2+ 27.Kxg2 Qc6+ 28.Kh3 Nxc1 29.Qxc1 Qd5** Dodges Qc4 **30.Qc3 Qf5 31.Kg2 Rxc5! 32.Qxc5 Qe4+ 33.Kh3 Qe2** White is weak on the light squares **34.Qg1 Qxd2 35.Bc1 Qc2** White must now prevent ...d2. **36.Kh4 d2** (...Nxb2) **37.Bxd2 Rxd2 38.h3** Weighted Error Value: White=1.13/Black=0.21 (precise) . Mistake: White=5 Black=2 Inaccurate: White=2 Black=1 OK: White=6 Black=7 Best: White=3 --- Strong: White=1 Black=2 Brilliant: --- Black=1 0-1



15

**Hakobyan,A. (2698)  
Brodsky,D. (2613)**

**1.d4 d5 2.c4 c6 3.Nf3 Nf6 4.Nc3 e6 5.Bg5 h6 6.Bxf6 Qxf6 7.e3 Nd7**

**8.Be2!** now scores much better than the old 8.Bd3. **8...g6** D43: Semi-Slav: 5 Bg5 h6. **9.0-0 Qe7 10.c5!?** Exploring less charted territory. **10...Bg7** The position is equal. **11.e4 0-0 12.Rc1 b6N** [12...dxe4= 13.Nxe4 e5; Predecessor: 12...a5 13.Re1 b6 14.exd5 exd5 15.Bf1 Qd8 16.cxb6 Nxb6 17.Ne5 Qd6 18.Nb1 Bb7 ½-½ Grau Ribas,J (1927)-Van Hattum,L EU-ch SC-OR/496 email ICCF email 2022] **13.b4 a5 14.b5 Bb7 15.exd5 exd5 16.bxc6 Bxc6 17.Bb5 Bxb5 18.Nxb5** Threatens to win with Re1. **18...bxc5 19.Re1** Deflection **19...Qd8** Black is now going downhill. [19...Qf6] **20.dxc5+- Nf6 21.Nfd4** [21.c6] **21...Kh7** [21...Ne4 might work better. 22.f3 Ng5] **22.c6 Ne4 23.c7 Qg5 24.Nf3** A dynamic duo of knights. **24...Qf5 25.Qd3 a4 26.Red1 Ra5** [26...Rfc8 was necessary. 27.Qxd5 Qxd5 28.Rxd5 Nc3 29.Nxc3 Rxc7] **27.Nbd4?** [27.Qxd5+- Qxd5 (27...Rxb5? 28.Qxf5 gxf5 29.Rd8+-) 28.Rxd5] **27...Bxd4?** [27...Qd7 is a better defense.] **28.Qxd4** Strongly threatening Ne5. **28...Rc8 29.Qb6** Prevents Rb5 **29...Raa8 30.Qb7?** [30.h3+-] **30...Nf6?** [30...Ra5] **31.Nd4 Qe5 32.h3 Ne8** [32...Ne4 keeps fighting. 33.Qc6 (33.Nf3 Qe6+-) 33...Kg7] **33.Nb5** [33.Nf3 Qe2 34.Qxd5 Qe7+] **33...Nd6 34.Nxd6** [34.Qxd5 Qxd5 35.Rxd5 Nxb5+-] **34...Qxd6 35.Rxd5 Qf4 36.Rdc5 a3 37.g3 Qd2 38.R1c2 Qd4 39.Kh2 Qd3 40.R5c3 Qd6 41.h4 h5 42.Qf3 Kg7** [42...Qe7 43.Re3 Qd7] **43.Rc6 Qd4 44.R2c4 Qd7 45.Qf6+ Kh6** Black is weak on the dark squares **46.Rd4 Qe8 47.Rcd6** Weighted Error Value: White=0.34/Black=0.74. Loses game: --- Black=3 Missed win:

White=2 --- Mistake: White=1 Black=5 Inaccurate: White=3 Black=1 OK: White=19 Black=10 Best: White=3 Black=1 [47.Rc5 Qe2 48.Rdd5 (48.Qxf7 Rf8=; 48.Rd8 Rxd8 49.cxd8B Rxd8+-) 48...Ra5 49.Rxa5 Qxf2+ 50.Qxf2 Rxc7 51.Qf6 (51.Rxa3 Kg7 52.Ra6 Kh7 53.Qf6 Rb7) 51...Rc2+ 52.Kh3 Rh2+ 53.Kxh2 Kh7 54.Rd8 Kh6 55.Qh8#] 1-0

16

**Chatterjee,K. (2615)  
Gledura,B. (2692)**

**1.d4 d5 2.c4 c6 3.Nf3 Nf6 4.Nbd2 a6 5.e3 Bf5 6.Nh4** D11: Slav Defence: 3 Nf3 sidelines and 3...Nf6 4.e3 Bg4. **6...Be4 7.Qb3 Ra7 8.Nxe4** White is slightly better. **8...Nxe4 9.Nf3 e6 10.Bd3 f5 11.Ne5N** [11.0-0; Predecessor: 11.cxd5 cxd5 12.Qa4+ Qd7 13.Qxd7+ Nxd7 14.Ke2 Bd6 15.Nd2 Nxd2 16.Bxd2 Ke7 17.g4 fxg4 1-0 Lupulescu,C (2620)-Costachi,M (2460) ROM-ch Calimanesti Caciulata 2017 (5)] **11...Bd6= 12.Qc2** [12.0-0=] **12...Qa5+ 13.Ke2** [13.Bd2? Nxd2 14.0-0-0 (14.Qxd2? Bb4+-) 14...Bxe5 15.Rxd2 Bc7+-] **13...Bxe5 14.dxe5 Nd7 15.f3** [15.cxd5 with more complications. 15...exd5 16.b4 Qxb4 17.Bb2] **15...Nec5** [15...0-0!] **16.Bd2 Qd8 17.Bc3 0-0 18.cxd5 cxd5 19.Bd4 b6 20.Rac1! Qb8 21.Qc3 Nxd3 22.Kxd3 Nc5+** [22...a5 simplifies 23.Ke2 Nc5 24.Qd2 Rc7] **23.Bxc5** [23.Ke2=] **23...bxc5** [23...Rc8! deserves consideration.] **24.Qxc5 Rb7 25.Qd6** [25.b3 simplifies 25...Qxe5 26.Qc3 Qb8 27.Ke2] **25...Rxb2 26.Qxe6+?** Now White is beyond hope. [26.Qxb8! = and

White is okay. 26...Rfxb8 27.Rc2] **26...Kh8+** **27.Qxa6** [27.Qd6 is a self mate. 27...Qb5+ (27...Rxa2 28.Qxb8 Rxb8 29.Rb1) 28.Kc3 Rc8+; 27.Qc6] **27...Rxcg2** [Less strong is 27...Qxe5 28.Rc8 Rb8 29.Rxf8+ Rxf8 30.Qc6= (30.Re1 Qxh2 31.Rc1 Qb8) ] **28.Qa4** [28.Rcg1 Rb2 29.Rc1] **28...Qxe5** **29.Qd4?** [29.Rc2 Rxc2 30.Qxc2] **29...Qe6** (...Qa6+). Black is clearly winning. **30.Qb4 Re8** **31.Rhe1 Qa6+** **32.Kd4 Rxa2** **33.Kc3 Ra4** **34.Qb2 Ra3+** **35.Kd4** Superbly played by Gledura! Weighted Error Value: White=0.68/Black=0.31. Loses game: White=1 --- Mistake: White=6 Black=2 OK: White=6 Black=11 Best: --- Black=4 Strong: White=1 --- 0-1

17

**Harsha,B. (2632)**  
**Escalante,B. (2581)**

**1.d4 e6 2.c4 Nf6 3.Nc3 d5 4.cxd5**  
**exd5 5.Bg5 Be7 6.e3 0-0 7.Bd3**  
**Re8 8.Nge2 h6 9.Bh4 c6 10.0-0**  
**Nbd7 11.Qc2 Nh5 12.Bxe7 Qxe7**  
**13.Rae1 Nb6 14.Nc1** D36: Queen's  
Gambit Declined: Exchange Variation:  
Main line (5 Bg5 c6 6 Qc2).  
**1 4...Be6 1 5.Nb3 Nd7 N**  
[Predecessor: 15...Rad8 16.Nc5  
Bc8 17.Ne2 Nd7 18.b4 b6 19.Nxd7  
Bxd7 20.Rb1 Rc8 21.Rfc1 Qd6 1-0  
Raahul,V (2387)-Liyanage,R (2300)  
Asia-ch U20 Waskaduwa 2021 (7)]  
**16.f4** Hoping for f5. White is  
slightly better. **16...Nf8 17.f5 Bd7**  
**18.e4 dxe4 19.Nxe4** And now f6!  
would win. **19...Nf6 20.Nbc5 Qf2!**  
would now be deadly. White is  
more active. **20...b6!** **21.Nxd7** Dis-  
covered Attack **21...Qxd7**  
**22.Nxf6+ gxf6 23.Qc3**↑ White  
fights for an advantage. **23...Rxe1**  
**24.Rxe1 Rd8** [24...Re8= keeps the

balance. 25.Rxe8 Qxe8] **25.Be4**  
[White should play 25.Re4]  
**25...Qxd4+** [25...Kg7= remains  
equal.] **26.Qxd4 Rxd4 27.Bxc6=**  
Endgame. KRB-KRN **27...Nd7**  
[27...Rc4! 28.Bd5 Rc5] **28.Re8++**  
**Nf8 29.Re7 Rd1+** [29...a5 30.Rb7  
Rd2 (30...Rd1+ 31.Kf2) ] **30.Kf2**  
**Rd2+?** [30...a5 was called for.  
31.Rb7 Rd2+ 32.Ke3 Rxb2] **31.Ke3**  
**Rxb2 32.Rxa7 Rb1 33.Bd5 Rd1**  
**34.Bxf7+ Kh8 35.Bb3 Rd6 36.h4**  
**Rc6 37.Ra8 Kg7 38.Ra7+?** [38.g4+-  
] **38...Kh8= 39.Bd5 Rd6 40.Kd4**  
[40.Bc4] **40...Rd8?** [40...Nd7  
41.Ra8+ Kh7] **41.Ra8+-** White is  
clearly winning. **41...Rxa8 42.Bxa8**  
**Nd7 43.Kc4 Kg7 44.Kb5** Weighted  
Error Value: White=0.48/  
Black=0.52. Missed win: White=1 --  
- Mistake: White=2 Black=6 Inaccu-  
rate: White=2 Black=2 OK:  
White=13 Black=8 Best: White=4  
Black=3 Strong: --- Black=1 1-0

18

**Beradze,I. (2592)**  
**Antipov,M. (2657)**

**1.c4** Marin,Mihail **1...Nf6 2.Nc3 e5**  
**3.Nf3 Nc6 4.g3 Bb4 5.Nd5 e4**  
**6.Nh4** A29: English Opening: Four  
Knights Variation with 4 g3. **6...0-0**  
**7.Bg2 d6 8.a3** The position is  
equal. **8...Bc5 9.0-0! Re8 10.e3 g5**  
**11.b4! Bb6** [Black should play  
11...gxh4 12.Bb2 (12.bxc5 Ne5=)  
12...Nxd5 13.cxd5 Ne5 (13...h3  
14.Bh1=) ] **12.Bb2! Nxd5 13.cxd5**  
**Nd4 14.d3 gxh4 15.dxe4! h3!?**N  
An interesting novelty.  
[Predecessor: 15...Ne6 16.dxe6  
Rxe6 17.e5 hxg3 18.hxg3 Qg5  
19.exd6 Rxd6 20.Qb3 h5 21.Rad1  
Rh6 22.Rd5 Qe7 23.Qc4 Bg4  
24.Qf4 Rg6 25.Re5 Qd6 26.Be4 1-0  
Nakamura,H (2790)-Anand,V  
(2762) Candidates Tournament

Moscow 2016 (12)] **16.Bh1 f5**  
**17.a4** [17.exd4 fxe4 18.Qh5 Bd7]  
**17...a5 18.Bxd4** [18.exd4?! fxe4  
19.Qh5 axb4=; 18.bxa5 Rxa5  
19.Bxd4] **18...fxe4 19.Bxb6 cxb6**  
**20.Qd4 Bf5 21.Rab1 Re5**  
[21...Qd7= is more appropriate.]  
**22.bxa5! Rxa5 23.Rxb6** [23.Rb4!]  
**23...Rxa4!**= Deflection **24.Qb2 Ra2**  
Deflection **25.Qb4 Ra4!** Deflection  
**26.Qb5 Qd7 27.Qb3 Re7 28.Rxb7**  
Deflection **28...Qxb7 29.Qxa4**  
**Qxd5** [29...Qb2 simplifies 30.Qa1  
Qxa1 31.Rxa1 Kf7] **30.Rd1 Ra7!**  
Deflection, Back Rank **31.Qe8+**  
[31.Qxa7? Qxd1#; Don't play  
31.Rxd5 Rxa4 32.Rd1 h5; 31.Qc2  
Qe5] **31...Kg7 32.Rc1** [32.Rxd5? is  
a self mate. 32...Ra1+] **32...Qc4**→  
Deflection, Back Rank. Black is up  
to no good. **33.Qe7+?** Black con-  
verts the advantage convincingly.  
[White should try 33.Re1]  
**33...Rxe7+** **34.Rxc4** Endgame. KRB  
-KRB **34...d5 35.Rc1 Bg4 36.f3 exf3**  
[36...Bxf3 37.Bxf3 exf3 38.Kf2=]  
**37.Kf2 Ra7?** [37...h5+ and Black  
stays clearly on top. Hoping for  
...Rb7. 38.Rd1 Rb7] **38.Rc2?**  
[38.Rf1] **38...h5** Threatens to win  
with ...Bf5. **39.Rd2 Ra6 40.Rb2 Kf7**  
**41.Rd2 Ke7** ...Ra8 is the strong  
threat. **42.Rb2 Ra8** [42...Rf6  
43.Rb7+ Ke8 44.Rb8+ Kd7 45.Rb5]  
**43.Rd2 Ke6 44.Rb2 Kd6 45.Rd2**  
**Kc6** [Not 45...Rf8 46.e4=] **46.Rc2+**  
**Kb5 47.Rd2 Kc5** White must now  
prevent ...d4! **48.Rc2+ Kb4** aiming  
for ...Kb3. **49.Rc1 Ra2+ 50.Kg1 f2+**  
**51.Kf1 Bf5** Black mates. **52.Rd1**  
**Bc8 53.Rb1+ Ka5** Ingenious play by  
Antipov! Weighted Error Value:  
White=0.59/Black=0.23 (precise) .  
Loses game: White=2 --- Missed  
win: --- Black=1 Mistake: White=2  
Black=2 Inaccurate: White=5  
Black=1 OK: White=17 Black=17

Best: --- Black=3 Strong: White=4  
Black=1 0-1

19

**Raja, H. (2534)**  
**Dudin, G. (2622)**

**1.e4 c5 2.Nf3 d6 3.d4 cxd4 4.Nxd4 Nf6 5.Nc3 Nc6 6.Bg5 e6 7.Qd2 a6 8.0-0-0 Bd7 9.f3 Nxd4 10.Qxd4 Be7** B67: Sicilian: Richter-Rauzer: 7...a6 8 0-0-0 Bd7, lines without 9 f4 Be7. **11.g4 Qc7** [11...b5] **12.h4** [12.Be3!] **12...b5** White is slightly better. **13.Qd2** [13.Be3] **13...b4!=** **14.Ne2 a5 15.Kb1 Qb7!?**N New and interesting. [15...a4= is more appropriate.; Predecessor: 15...a4 16.Qxb4 Rb8 17.Qc3 Qb7 18.Bc1 0-0 19.Nd4 Rfc8 20.Qd3 g6 21.h5 e5 1-0 Vallejo Pons,F (2716)-Shankland,S (2710) Gashimov Memorial Rapid 8th Baku 2022 (9)] **16.Ng3 Bc6 17.Nh5** [17.Bxf6 gxf6 18.Qh6] **17...Nxb5 18.gxh5 f6 19.Bf4** [19.Be3] **19...d5** [19...Kf7=] **20.Bh3 Kf7 21.e5** [21.Bxe6+ Kxe6 22.exd5+ Bxd5 23.Rhe1+ Deflection 23...Kf7 24.Qxd5+ Qxd5 25.Rxd5] **21...f5** Threatening ...d4. **22.Bg5** [22.h6!=] **22...Bc5** [22...h6 feels stronger. 23.Bxe7 Qxe7 (23...Kxe7 24.Rhg1=) ] **23.h6** White is not holding back **23...Rhc8 24.hxg7 Kg8** [24...d4 should be considered.] **25.Rhg1?** White does not recover from this. **25...Bxg1+** **26.Rxg1 a4** [Worse is 26...Kxg7 27.Bd8+ (27.Bf6+ Kf7 28.Qh6 Rg8 29.Qxh7+ Rg7 30.Rxg7+ Kf8 31.Qh8#) 27...Kf7 28.Qh6 Rxd8 29.Qxh7+ Kf8 30.Rg8#; 26...Qxg7? loses. 27.Be3 Rc7 28.Rxg7++] **27.Be3** [27.Qd4 was worth a try.] **27...d4!** Discovered Attack **28.Qxd4 Bxf3** Hoping for ...Be4. **29.Qd6** [29.Bf1 might

work better.] **29...Ra6 30.Qd2 b3 31.cxb3** [31.Bf1+ bxc2+ 32.Kc1] **31...axb3** Black mates. **32.a3** White is weak on the light squares **32...Be4+ 33.Ka1 Qe7** A cool game by Dudin. Weighted Error Value: White=0.75/Black=0.23 (precise) . Loses game: White=1 --- Mistake: White=9 Black=5 OK: White=7 Black=10 Best: White=1 --- Strong: -- Black=1 0-1

20

**Gazik, V. (2641)**  
**Hakobyan, A. (2698)**

**1.e4 e5 2.Nf3 Nc6 3.d4 exd4 4.Nxd4 Nf6 5.Nxc6 bxc6 6.e5 Qe7 7.Qe2 Nd5 8.h4 g6** C45: Scotch Game. **9.Bg5** outshines the older 9.c4. **9...Qc5 10.c4 Qb4+N** The position is equal. [Predecessor: 10...Ba6 11.Qe4 Qb4+ 12.Nd2 Nb6 13.c5 Qxe4+ 14.Nxe4 Bxf1 15.cxb6 Bxg2 16.Nf6+ Kd8 1-0 Ahn,M (2153)-Czaecine,P (1588) World-chT Rapid Dusseldorf 2023 (12)] **11.Nd2 h6! 12.Bf6 Nxf6** Remove Defender **13.exf6+ Kd8 14.0-0 Rb8! 15.Nf3! Bd6 16.Qc2** [Better is 16.Re1!] **16...Re8** Black fights for an advantage. [16...c5] **17.g4?** [White should try 17.Bd3=] **17...c5** [Black should play 17...Bf4+ 18.Kb1 c5] **18.Rh3** [18.Kb1] **18...Bf4+ 19.Kb1 Rb6** [19...Qa5 ...d6 would now be deadly. 20.h5 g5] **20.Ng1?** Loses the game. [20.Nd2 was necessary.] **20...d6** [20...Rxf6 21.Rb3] **21.Be2 Bd7 22.Rhd3 Be5 23.b3 h5** Deflection [23...Bxf6 24.Nh3+] **24.gxh5 Bf5** Skewer [Less strong is 24...Bxf6 25.Rf3 Bf5 (25...Bxh4 26.Rxf7 Bf5 Pin 27.Bd3) 26.Bd3] **25.Nh3** [25.hxg6 Bxg6 26.Nh3] **25...Qa3** [Resist 25...Bxf6 26.Nf4 Qa3 27.R1d2+] **26.hxg6 Bxg6**

**27.h5?** [27.Ng5] **27...Bf5+** Skewer **28.Ng5?** [28.R1d2] **28...Bxf6** A strong pair of Bishops. **29.Nxf7+** White is weak on the dark squares **29...Kc8 30.Bf1 Kb8** Threatens to win with ...a5! **31.Nh6 Bxd3 32.Bxd3 a5** (...a4) **33.Bg6 a4!** Beautiful play by Hakobyan! Weighted Error Value: White=1.04/Black=0.25 (precise). Loses game: White=1 --- Mistake: White=6 Black=3 Inaccurate: White=3 Black=2 OK: White=4 Black=11 Best: White=1 Black=3 Strong: White=1 Black=1 0-1

21

**Gledura, B. (2692)**  
**Beradze, I. (2592)**

**1.e4 c5 2.Nf3 e6 3.c3 Nf6 4.Bd3 Nc6 5.Bc2 Qc7 6.0-0** B40: Sicilian: 2...e6, Unusual lines. **6...d5 7.exd5 Nxd5 8.d4** White has an edge. **8...cxd4 9.Nxd4** [9.cxd4 Bd7 10.Nc3] **9...Nxd4= 10.Qxd4 Bd7 11.Re1 Bc6N** [Predecessor: 11...0-0-0 12.Qxa7 Bc5 13.Qa8+ Qb8 14.Qxb8+ Kxb8 15.Nd2 f6 16.Ne4 Ba7 17.a3 Bc6 0-1 Biletskyy,D (1926)-Pintero Rodriguez,C (2242) Titled Tuesday intern op 06th Feb Early Chess.com INT blitz 2024 (10)] **12.Bg5** [White should try 12.Nd2=] **12...Qb6 13.Qxb6 Nxb6 14.Nd2 Be7 15.Be3 0-0-0 16.Rad1 h6 17.Bd4 Rhe8 18.Be4** [18.Bxg7 Rg8 19.Be5 Bxg2 (19...Rxd2+ 20.Kf1) ] **18...Bxe4 19.Nxe4 Bf8 20.f4 Kc7 21.Kf2 Kc6 22.g3 Na4 23.b3** [23.Bxa7 f5 24.b3 Nb2 25.Rxd8 Rxd8] **23...Nc5 24.Kf3** Threatens to win with Nxc5. **24...Nxe4 25.Kxe4 Rd7 26.Rd3** [26.Bxa7 f5+ 27.Kf3 Rxd1 28.Rxd1 b6 (28...Ra8 29.Bd4=) ] **26...Red8 27.Red1 Bc5 28.a4** [28.b4 simplifies 28...Bxd4 29.Rxd4 Rxd4+

30.Rxd4 Rxd4+ 31.Kxd4 Kb5 32.g4] **28...Rd5** [28...Bxd4 simplifies 29.Rxd4 Rxd4+ 30.Rxd4 Rxd4+ 31.Kxd4 f6] **29.b4 Bxd4 30.Rxd4** Endgame. KRR-KRR **30...f5+** [30...Rxd4+= is superior. 31.Rxd4 Rxd4+ 32.Kxd4 f6] **31.Ke3 a5 32.bxa5 Rxd4 33.Rxd4** KR-KR **33...Ra8 34.Rc4+! Kd6 35.Rb4** Black must now prevent Rb6+. **35...Rxa5 36.Rb6+! Kd5 37.Rxb7** And now Rb5+ would win. **37...Rxa4 38.Rd7!** [Don't play 38.Rxg7 Ra2] **38...Kc5 39.Rxg7** Rh7 is the strong threat. White is more active. **39...Ra3 40.Kd3** Rg6 would now be deadly. **40...Ra2 41.Rg6 e5?** Black cannot hold the game after this. [41...Rxh2 42.Rxe6 Rg2] **42.Rf6+-** [42.fxe5 Rxh2 43.Rd6 Rh3; Stronger than 42.Rxh6 e4+ 43.Ke3 Ra3=] **42...exf4 43.Rxf5+ Kd6 44.Rxf4 Rxh2 45.Rh4 Rg2 46.Rxh6+ Kc5** [46...Ke5 47.Rg6 Rg1] **47.Rg6 Rg1 48.Rg5+ Kd6 49.Kc4 Ra1 50.Rg6+ Kc7?** [50...Ke5 51.Kb4 Rb1+ 52.Kc4 Rb8 53.Rg5+ Kf6] **51.g4** aiming for Kd5. White is clearly winning. **51...Ra5 52.Rg8 Ra1** [52...Kd6 53.g5 Ke5] **53.g5 Ra5 54.Kd4** [54.g6 Threatening mate with g7. 54...Rg5 55.Kb4] **54...Rf5** [54...Kd7 55.g6 (55.c4 Ke7+) 55...Ke6] **55.g6** White wants to mate with g7. **55...Rg5 56.c4** Weighted Error Value: White=0.17 (very precise) /Black=0.33. Loses game: --- Black=1 Mistake: White=2 Black=5 Inaccurate: White=4 Black=6 OK: White=16 Black=18 Best: White=5 Black=4 Strong:

White=3 ---[56.g7] 1-0



22

**Wong,C.  
Quezada,M.**

**1.e4 c6 2.d4 d5 3.f3 dxe4 4.fxe4 e5 5.Nf3 Bg4 6.h3** B12: Caro-Kann: Advance Variation. [6.Bc4 Nd7 7.c3 (7.dxe5 Bxf3 Remove Defender 8.Qxf3 Nxe5) ] **6...Bxf3= 7.Qxf3 Qxd4 8.c3N** [8.Nc3; Predecessor: 8.Be3 Qxb2 9.Bc4 Bb4+ 10.Ke2 Nf6 11.Nd2 Bxd2 12.Kxd2 Qb4+ 13.Kd3 0-0 14.Bb3 0-1 Jacobsen,E (1058)-Steinnes,S Tromsø Spring 2012 (5)] **8...Qd6 9.Bc4 Qf6** [9...Qg6] **10.Qg3** Strongly threatening Rf1. White has compensation. **10...Bc5?** [10...Qg6 11.Qxe5+ Be7] **11.Bg5?** [11.Rf1+- Qg6 12.Qxe5+ (12.Bxf7+ Qxf7 13.Rxf7 Kxf7+-) 12...Be7 13.Bxf7+ Qxf7 14.Rxf7 Kxf7 15.Qf5+ Nf6 16.e5 Pin] **11...Qd6** [11...Qg6 12.Qxe5+ Be7 13.Bxe7 Nd7] **12.Na3** White is more active. **12...f6** Black is weak on the light squares [12...Nd7= remains equal.] **13.Rd1** [13.Bc1 Qe7 14.b4] **13...Qc7** [13...Qe7!= and Black is okay. 14.Bd2 (14.Qg4 Nd7) 14...a5] **14.Qg4+-** Qe6+ would kill now. **14...fxg5?** [14...Na6+- 15.Bxg8 Bxa3 16.bxa3 Qe7] **15.Qe6+** White mates. **15...Kf8 16.Rd8+!!** Skewer, Deflection **16...Qxd8 17.Qf7#** A brilliant game! Weighted Error Value: White=0.82/Black=1.48. Loses

game: --- Black=2 Missed win: White=1 --- Mistake: White=3 Black=4 Inaccurate: White=1 --- OK:White=2 Black=2 Best: White=1 --- 1-0



23

**Deviprasath,S. (2506)  
Nandhakumar,V (2297)**

**1.Nc3** I was playing Vasee, second seed of the tournament, I knew this would be a vital game in deciding first. We are good friends, so I decided to play something off beat and just get a game of chess **1...c5 2.d4 cxd4 3.Qxd4 Nc6 4.Qd3 d6 5.Nf3 g6** Vasee shows his cards deciding to play a strong dragonish setup **6.Bf4 Bg7 7.0-0 Nf6 8.e4 Nd7?** A step in the wrong direction, this is a thematic plan in dragon structures, but with my dubious opening play black needs to pounce and be concrete. [8...Be6 9.Kb1 Rc8 Taking full advantage of his time black should have developed his pieces and played on the queenside] **9.Kb1 0-0 10.h4!** As Fischer said "h4-h5 sac mate" is how you beat the dragon **10...Nc5 11.Qe3 Bg4 12.h5 gxh5 13.Bh6 e5 14.Bxg7 Kxg7 15.Be2 Ne6 16.Nh4 Ned4 17.Bxg4 hxg4 18.Nf5+** With natural attacking play I was able to score a big win putting me in clear first in standings! 1-0





## Endgame



Since we are still adding to the 65th Anniversary volume of *Texas Knights* (one more issue is to follow this one), I thought I'd share some old, old ... old, old ... old, old references to TCA ... the same TCA as we have now? Maybe, maybe not. Since we claim to have served Texas chess players since 1935, I'd say no. But, I think it's still entertaining to read about Texas chess history.

The first one came from *The International Chess Magazine* which evidently grabbed it from *The Providence Sunday Journal*. What's really strange is the issue was supposedly published in December of 1891. And yet, it states that the Texas State Chess Association was organized on February 22nd, 1892, possibly two months plus or minus some days later. Now, maybe Marty McFly and the Doc visited the good people at the *Journal* in the DeLorean when he went *Back to the Future*. I don't know, but I did find it rather amusing.

—The Texas State Chess Association was organized February 22d, 1892, at San Antonio. The following officers were elected, President, George Bucklin; Vice-Presidents, Charles P. Smith, Everett G. Grover and George H. Kaltayer. A tournament was held, in which there were eleven contestants. The prize winners are as follows: Fourth prize, Everett G. Grover; fifth prize, George Darcomb. The first, second and third prizes, are not yet decided, George Bucklin (formerly of Providence, R. I.), John F. Ford and R. W. Norton having tied for first place.—*The Providence Sunday Journal*.

The next one is from *The San Antonio Daily Express*, published on February 24th, 1892. The original is very hard to read. Our TCA Historian, Leigh Harrington, was kind enough to transcribe it.

### **An Organization About Perfected by the Local Players**

Steps are on foot to organize a Texas State Chess association, the person at the head of this movement being George Bucklin of this city. A meeting was held at the Menger hotel here Monday night for the purpose of taking the preliminary steps in the matter. The following named local chess-players were present and signed their names to the original roll of membership: Charles P. Smith, E.G. Graves, Gabriel de Raronceill, B. Landaw, George Bucklin, George A. Dascomb, C.L. Beaumont, R. W. Norton, John F. Ford, George Laug and Joseph Ryan.

Owing to the lateness of the hour of the meeting the organization was not perfected and further action was postponed until next Saturday night at 8 o'clock when it is expected that there will be a large attendance of players. After the organization has been completed the members will engage in a tournament for the championship of the state and a good-sized purse. It is not likely that the tournament will be finished on Saturday night.

My questions are ... if the Texas State Chess Association isn't what we know now of as the Texas Chess Association. When did the Texas State Chess Association dissolve or get renamed to something else? And, if renamed, to what?

90TH ANNUAL

# SOUTHWEST OPEN 2024



**9SS/7SS, G90;INC30**

**1-DAY SCHOLASTIC, 5SS, G25;D5**

International norm possible section is 9 rds, 5-day, 8/29- 9/2. All other sections 7 rounds with 4-day or 3-day options. 8/30, 8/31.

FREE SHUTTLE  NEAR IAH

**BLITZ ON SUNDAY**

Doubletree by Hilton IAH  
15747 JFK Blvd. 77032

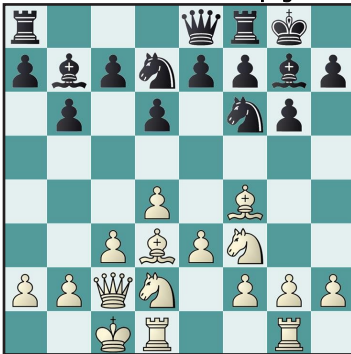
1 day Scholastic tournament on 8/31. Trophies!!!!!!!!!!  
Team and Individual awards! 3 Sections.     

[kingregistration.com/event/90SWO](https://kingregistration.com/event/90SWO)



Texas Chess Association  
2709 Longhorn Trail  
Crowley, TX 76036-4719

**Tactics Time!** Answer on  
page 18



I. Alejandro - G. Gonzalez  
South Texas State Scholastic 2024  
Black to Move

