



TEXAS KNIGHTS

Volume 65, Number 6

The official publication of the Texas Chess Association

Jul-Aug 2024 \$5

The 2024 TCA Election...Vote!!!



It's time to choose the future administration of the Texas Chess Association!

Table of Contents

A Message from the TCA President	4
The 2024 Texas Chess Association Election	5
<i>Presidential Candidates</i>	5-6
<i>Vice Presidential Candidates</i>	6-7
<i>Secretary Candidates</i>	8-9
<i>Treasurer Candidates</i>	9-10
2024 US National Championships (Senior, Junior and Girls' Junior)	11
Luis Salinas Awarded Outstanding Achievement Award by Caleb S. Brown	12
Review: The Chessnut EVO Electronic Chess Set by Jeff French	13
Tactics Time! by Tim Brennan (Answers on page 18).....	15
Leader List.....	16
Coach's Corner - e4! by Robert L. Myers.....	18
New Chess Books by Dr. Alexey Root	20
Upcoming Events & Game Index.....	21
Endgame.....	29
Memberships.....	31

TEXAS CHESS ASSOCIATION

A 501(c)(3) Educational Nonprofit Corporation Dedicated to Promoting Chess in Texas

texaschess.org
Facebook.com/TexasChess
Chess.com/club/texas-chess-association

President: Francisco L. Guadalupe, flguadalupe@aol.com

Vice-President: Darryl West, DarrylWest@live.com

Secretary: Renate Garcia, renategarcia1@gmail.com

Treasurer: Barb Swafford, 2709 Longhorn Trail, Crowley, TX 76036-4719; barboundsg@gmail.com.

Editor: Jeff French, texasknightsed@texaschess.org, <https://facebook.com/texasknightsed>

Assistant Editor: We are looking for someone to fill this post. Contact the Editor for further information.

Website Admin: Chris Wood, chris@handsomeweb.com.

Facebook Admin: Deborah Shafer, dshaferchess@yahoo.com

Tournament Clearinghouse: Lori Balkum, Lori.Balkum@austinchess tournaments.com

Membership Dues: You can join/renew online at texaschess.org using a credit/debit card or PayPal

Regular: \$10. **Family:** \$15. **Non-Subscribing:** \$5.

Junior (18 and under): \$7.50. **Student:** \$7.50.

Foreign (Canada & Mexico): \$12.50, (Other): \$17.50.

Blind: \$2 (\$5 with mailed magazine).

Patron: \$25. **Family Patron:** \$30.

Lifetime Regular: \$200. **Lifetime Patron:** \$500.

Affiliate: \$10. **Scholastic Affiliate:** \$10.

Foreign Affiliate: \$40.

Ad rates: \$50/page, \$35/half, \$20/quarter (Affiliate membership includes one quarter-page ad a year), \$1/line.

Send payment to: **TCA Treasurer, 2709 Longhorn Trail, Crowley, TX 76036-4719.** Please provide name, address, phone # and email. **Remember:** Contributions beyond membership dues may be tax deductible.

TCA Hall of Honor

Lifetime Patron

Selby K. Anderson
Thomas Boyd
Caleb S. Brown
Clarence Callaway, Jr.
Carmen Chairez
George W. Church, Jr.
David W. Cofer
Jack Garcia
Austen Green
David Harrington
Patrick C. Long
Harmon Throneberry
Louis Thurston

Patron

Michael Donovan
Raymond Feyes
Charles Fricks
Robert Harrington
Sanmita Hosur
Robert Jones
Peter Kappler
George Laiacona
Carlos Lau
David Ortiz
James Post
Robert Skipper
Barbara Swafford

Patron Online

Gregory Lane Newman

Family Patron

Margaret Bailon-Labednick
Sarah Brauner
Thomas E. & Jo Ann Crane
Jeff & Lonann French
Renate Garcia
Joshua Goldberg
Danny & Brenda Hardesty
James Houghtaling Jr.
Amy Jones
Laura Moore
Robert Moore
Subba & Tanvi Reddy
Robert L. Myers
Douglas & Alexey Root

Contributors: Tim Brennan, Caleb S. Brown, Jim Hollingsworth, Robert L. Myers, Dr. Alexey Root

Cover photo: Generated with AI. Powered by Dall-E 3

Game annotations: If not attributed, are a collaboration between the Editor and Fritz 19.

WANTED!

- Articles
- Games
- Results
- Photos
- Comics
- Reviews
- Affiliate News
- Region News

Texas Chess Related Submissions Only

Submissions accepted by:

Email: texasknightsed@texaschess.org - or -
US Mail: Email Editor and request address.

(Please include contact information)

Submission Deadline:

September 15th, 2024

Copyright © 2024 by Texas Chess Association, Inc. All Rights Reserved.


TCA Logo Copyright © 2020 by Texas Chess Association, Inc. All Rights Reserved

No part of this publication may be reproduced without the express permission of the Editor.



 texasknightsed@texaschess.org

From the Desk of the Editor

 [Facebook.com/texasknightsed](https://www.facebook.com/texasknightsed)

Hello Texas,

It's election time at TCA. By the time you read this issue, you should have ballots (or they are coming very soon) and be able to make your selections. This issue has the photos and bios for the candidates. Cast your vote by **August 23rd!**

This issue has coverage of the US National Senior, Junior, and Girls' Junior Championships with games played by Texas players. All three tournaments had player representation from Texas.

You will find an article from Caleb Brown about Luis Salinas' recent US Chess *Outstanding Achievement Award*.

Continuing with my e-board reviews, this time I cover the *Chessnut EVO*. I have become an affiliate with Chessnutech and have been provided some electronic sets to review and also hope to share. If you have a TCA Affiliate membership or a chess club (that should consider becoming an affiliate), I am beginning to schedule visits so you and your members can have an opportunity to see these boards firsthand. If you are interested, email me, and I'll do my best to get there at some point. I will also be recording some videos so you can see much more than I can cover in a written review. You can find where they can be found in the review itself.

This is the final issue in the 65th Anniversary volume. The next issue, coming after the election, will return to our typical format ... well ... maybe with some layout and content changes that were implemented over the last year.

Winning entries from the **4th Annual Creativity Contest** are also included in this issue. On Page 10, you will find an image created by **Evelyn Leal**, from Region VIII called *The Last Board*, which won 1st place in the Visual Arts/Best Art category/subcategory. Also on Page 10, you will find the photo called *Innovative Chess Solutions* by **Caleb Brown**, from Region II, and highlighted on the website found at <https://innovativechesssolutions.com>, which won 1st place in the Visual Arts/Best Single Photo category/subcategory. On Page 28, you will find a photo by **Kwunnie Ng (Montgomery)** from Region V called *Chess Bunny*, which won 1st place in the Visual Arts/Best Chess Photo category/subcategory. All of the winners have been submitted for *Chess Journalists of America Awards*. Congratulations to all.

By the time the next issue is published, TCA will have a new executive administration. The submission deadline is September 15th. You should find the issue on the TCA website within the first week of October and in mailboxes soon thereafter.

Stay safe, play chess, and **VOTE!** - Jeff



A Message from the President

August 2024

This is my last “Message from the TCA President” since, as I previously wrote, I am not seeking reelection. It has been an honor and privilege to serve as the TCA President for the past four years, and I thank all of you for your support of our players, tournament directors, organizers, and to those of us who were appointed to lead this great organization. As you know, the TCA Elections are underway, and I encourage all TCA members of voting age to exercise their right to vote. Regardless of who gets elected, I am confident that you will continue to support them and, most importantly, our players.

Five outstanding chess players represented us at the **US Chess National Invitational events, July 27-30, in Norfolk, Virginia!** Once again, these five players were **Scott Elliott** (Irwin National Tournament of Senior State Champions), **Sharvesh Deviprasath** (Denker National Tournament of State High School Champions), **Ellery Zhang** (Haring National Tournament of Girls State Champions), **Eric Liu** (Barber National Tournament of Middle School Champions), and **Oscar Zhang** (Rockefeller National Tournament of State Elementary Schools Champions). **Sharvesh** finished in a tie for first place and is the Co-Champion of the Denker! In the Barber, **Eric** finished in second place, while **Ellery** finished tied for 7th place in the Haring. In the Irwin, **Scott** finished tied for

12th place, while **Oscar** finished tied for 14th place in Rockefeller. These fantastic individual performances resulted in a first-place tie (second on tiebreaks) for Texas among the 53 teams. Congratulations to our Texas representatives!

In the recently conducted **4th Annual Creativity Contest**, Texas chess players and organizers were the winners in three categories. **Caleb Brown** of Innovative Chess Solutions was a winner in the Online & Social Media Subcategory, Best Website U500 Users; **Kwunnie Ng (Montgomery)** in the Visual Arts Subcategory for Best Photo (Chess Bunny), and young **Evelyn Leal** of Region VIII in the Visual Arts Category, Best Art Subcategory for her drawing of The Last Board. Congratulations to them. Lastly, winning the **2024 US Chess Annual Awards** were two Texans: **Sr TD/FA/IO Luis Salinas** was posthumously awarded the **US Chess Outstanding Career Achievement Award**, and **Jim Hollingsworth** was awarded the **US Chess Meritorious Service Award**.

As always, there is much more included in this issue of TK, so please read on! Thanks again for your support for this organization and, most importantly, for our chess players!

With best regards,
Franc

About the Author

- Franc Guadalupe is a US Chess National Tournament Director, FIDE International Arbiter Category A, and FIDE International Organizer.
- He is a former US Chess Executive Director, US Chess Director of Events, and FIDE Zonal President for the U.S.
- He has organized and directed over 50 National events including many in Texas.
- In addition to his current position as TCA President he was President of the Florida Chess Association.

The 2024 Texas Chess Association Election

Below you will find the candidates running for office in the 2024 Texas Chess Association Election. They are ordered by office (President, Vice President, Secretary and Treasurer) followed by the last name of the candidates.

*Electronic ballots must be returned, and printed/mailed
ballots must be postmarked, by August 23rd.*

Election Administrator: Renate Garcia (renategarcia1@gmail.com).



David Ortiz

*Candidate for
President of TCA*

My name is David Ortiz, and I am honored to announce my candidacy for President of the Texas Chess Association. With a diverse background spanning leadership roles in both the military and education, coupled with extensive experience within the chess community, I am eager to bring my unique blend of skills and passion to take TCA to the next level.

Vision and Goals:

1. **Expand Scholarships and Opportunities:** I am passionate about creating more scholarships and opportunities for students to excel in chess. These initiatives will not only foster talent but also make chess accessible to a broader range of aspiring players throughout our communities.

2. **Expand the benefits of TCA membership:** I aim to enhance the value of TCA membership by offering new and exciting benefits that cater to the diverse needs and interests of our members.

3. **Nurture organizational reform to meet the needs of our growing membership:** As our membership grows, I will prioritize organizational reforms to maximize efficiency and ensure responsive service to our members.

4. **Establish Financial Sustainability:** To secure the future of chess in Texas, I will focus on establishing a strong financial foundation. This includes laying the groundwork for an endowment that will support ongoing programs, tournaments, and player development initiatives for generations to come.

Why Vote for Me:

• **Experience:** I bring a wealth of experience in both chess and organizational leadership. My background has equipped me with the skills needed to manage

complex projects, lead diverse teams, and achieve strategic goals. I am a **Marine Corps veteran**, having served eight years, and currently the Director of Career Services at South Texas Vocational Technical Institute. Previously, I worked as the After School Site Administrator for IDEA Public Schools and for the **University of Texas Rio Grande Valley (UTRGV) Chess Program**. I was the founding President of the UTRGV Chess Club. I am a **Senior Tournament Director**, **USCF Certified Coach**, and **FIDE School Instructor**. I recently passed my exam to become a **FIDE National Arbiter** and am scheduled to take the **FIDE LEAD School Instructor** course at the end of July.

• **Contributions to TCA:** I joined TCA as a member in 2015 to compete in the Texas Team Championship. From 2019 to 2022, I served as the TCA Region X Director and am currently on the TCA membership committee. I have worked in 30+ tournament sections and served as Deputy Organizer for numerous TCA events, including the 2017 Texas Scholastic State Championships, 2022 and 2023 State Grades, 2022 and 2023 State Girls, 2023 Region X Regionals, and the 2024 South Texas Scholastic Championships.

• **Commitment:** I am deeply committed to the Texas chess community. I understand the challenges we face and am dedicated to developing effective solutions that benefit all members. Unlike others who are often too busy, I have the time and dedication to ensure that these initiatives are successful.

• **Vision:** I have a clear vision for the future of the Texas Chess Association, one that is inclusive, innovative, and community-focused.

Together, we can make significant strides in promoting and developing chess throughout Texas. I humbly ask for your support and your vote in this election. Let's work together to make the Texas Chess Association a vibrant, inclusive, and dynamic community for all chess enthusiasts.

Thank you for your consideration.

Sincerely,
David Ortiz



Jim Polomsky

*Candidate for
President of TCA*

For over 30 years, Jim Polomsky has been a driving force in the growth of Houston Chess Clubs. Most recently, he co-founded the Lake Houston Chess Club on the Northeast side of Houston with Don Putnam. Jim has an impressive 36-year history of participating in chess tournaments, achieving a peak rating of 1866. Jim's leadership experience is extensive. He has been elected/selected to numerous officer roles in several nonprofit organizations, including Membership Director for The Rotary Club of Lake Houston Area, Vice President of Public Relations/President-Elect for Deerwood Toastmasters, and Region V Director for the Texas Chess Association (TCA). These roles, several held for many years, demonstrate his commitment and capability. In June, Jim was named The Rotarian of the Year by his local Rotary Club for 2024!

Academically, Jim holds a Bachelor's degree in English (1996) from the University of Houston and a Master's

degree in Counseling (1998) from Minnesota State University. He spent 14 years as an English teacher in public schools where he ran chess clubs before, during, and after school hours. In 2013, Jim received a commendation from the Humble ISD School Board and was honored as Teacher of the Year by his peers at Ross Sterling Middle School. Jim has been married for 18 years to his wonderful wife (Laurie), has 2 amazing adult children (Jacob and Devyn), and 3 dedicated dogs. (Leo, Peanut Butter, and Jelly)

For the past decade, Jim has managed a team of real estate agents in Houston, a role that provides him with the flexibility to take on the responsibilities of President of the TCA while continuing his active participation in tournament play. Jim is a Life Member of the TCA and a Life Member of the University of Houston Alumni Organization.

Growing TCA Membership, Increasing Scholastic Scholarships, and Growing the number of Chess Clubs across Texas are a few of Jim's projects for the next few years. With your vote, Jim is confident we can lead the Texas Chess Association to new heights.

Jim endorses the following candidates. Jeff French for Vice President, Jonathon Singler for Treasurer and Jon Santos for Secretary. Please vote for them. Thank you for your support!



Caleb Brown

*Candidate for
Vice President of TCA*

What is the future of TCA?

This is a question you should be asking all candidates in this election. And as we look upon 65 years of Texas Knights it is fitting that we ask where are we going? We cannot expect to win if we make moves one at a time without calculating the future. We need a plan. We need a goal. We need a vision.

But what vision? I envision a future where Texas is the chess capital of the world. I see the day when our ranks of chess players swell into the hundreds of thousands and our state championships stretch into the tens of thousands. And most importantly, I see the lives of thousands radically transformed for the better through the vital work of our state chess association.

This will not be easy, but it can be done. It requires three things.

One: *We need more opportunities to get people in the game.* Chess clubs and school chess programs are the backbone of our outreach efforts to the non-chess playing public. It is there that most new players are born. We need to make chess programs commonplace throughout schools and universities in every region of this state. And we need to ensure that a chess club, open to all, is within 30 minutes' drive of every Texan. TCA can help make this a reality by quadrupling its chess set program, subsidizing chess coaches in schools and creating a mentorship program to support chess club leaders. We can also help clubs with publicity and provide them with resources and connections to further their growth.

Two: *We need more opportunities to keep people in the game.* We lose a lot of players as they leave high school. Others leave after college. And others still leave at all ages because they feel out of place in our community (women and girls especially). To grow we must

cut these losses, and to do that we must keep more people interested in chess and ensure that everyone feels like they belong in our community. TCA can further this goal by radically expanding its offering of tournaments—and not just events that are big money makers but also fun ideas (like a Fisher Random championship) and events that support specific communities (like the girls regional championships mentioned in our bylaws that are almost never held). We can also explore other programming like simultaneous exhibitions, conferences and chess research competitions.

Three: *We need more opportunities to grow people in the game.* It is not enough to bring people in and keep them. If we want to grow, we need to uplift them so that they can uplift us by bringing new people into our community. We need to give them a sense of purpose they can only gain by helping others. TCA can do this by inviting them into the fold as tournament directors, organizers, coaches, etc., and providing them with the resources, training and mentorship they need to succeed.



Jeff French

*Candidate for
Vice President of TCA*

Dear Texas Chess Association Members,

You are at a crucial juncture in our association's journey, and I am eager to join you as a candidate for Vice President. Your passion for chess and dedication to its advancement across Texas inspire me deeply.

Imagine a Texas Chess Association that not only supports competitive players but also empowers local clubs, schools, and communities. Together, we can expand outreach programs, enhance educational initiatives, and foster a welcoming environment for players

This will not be done in a day. It will take many years to accomplish. We will need strong leaders who have the drive and determination to see it to the end. Sound organizational reforms like expanding fundraising efforts, improving internal controls and revitalizing our committee system will also be needed. And above all the dedication and support of our volunteers will be paramount.

But why do I say these things? I learned to play chess when I was 7 years old. After becoming a tournament director at age 14, I fell in love with helping others through chess. Ever since attending my first membership meeting at age 16 TCA has been my main way of doing so. I have enjoyed serving as a committee member, assistant editor, acting secretary and as one of Texas's Delegates. I am also a TCA Lifetime Patron Member.

And now, as a junior at Baylor University, I would be honored if you gave me the chance to take the first steps towards making this vision a reality. Please vote for me as your next Vice President. Thank you!

of all ages and skill levels.

As your Vice President, I will prioritize transparency, communication, and collaboration. Your ideas and concerns will shape our strategy, ensuring that our association serves its members effectively and inclusively.

Let's build a stronger chess community together. Your vote for Vice President of the Texas Chess Association will enable us to achieve new heights and make a lasting impact on the chess landscape in our state.

Thank you for considering me as your advocate and leader in chess. Should I secure the post of Vice President, rest assured that I will also continue to fulfill my duties as *Texas Knights* Editor.

In addition, please consider Jim Polomsky for President, Jon Santos for Secretary, and Dr. Johnathon Singler for Treasurer. Together, as our leadership team, along with your invaluable support, there are no bounds to what we can achieve for the advancement of chess in Texas.





Amy Jones

Candidate for Secretary of TCA

Amy Jones for TCA Secretary

Over the last several years, I have grown into a chess coordinator, tournament director, organizer, and even a fledgling chess player. The journey began when I volunteered for the small task of reserving a room at the library for my children and their friends to start a monthly chess club. I naively underestimated the impact chess would have on all of us. What I found was not just a game to challenge the mind, but an unending list of benefits packaged within a diverse community where respect, understanding, encouragement, and support among players is common.

Along with my growth in chess program and facilitation skills, I've grown in my belief that supporting and encouraging chess growth and opportunities for players of all ages and backgrounds is a worthwhile effort. The chess community gives its members an experience that can't be found anywhere else. It is my desire to be a part of the growth of chess in Texas. I want to see thriving chess programs across the state, ample opportunities to compete in all regions, and increased participation of schools, female players, players in rural areas, and older adults.

Involvement with chess has been a blessing to me and my family, and I have a desire to help expand the reach of chess to more Texans. Appreciation and desire are a good start, but I am also qualified and ready to serve. Below is a list of experiences that have prepared me to serve TCA.

- Certified Public Accountant (2005-Present) - worked in tax, financial audit, and internal control audit for banks; skills/qualities: organized, reliable, trustworthy, deadline-oriented, persistent, creative problem-solver
- West Texas Women Certified Public Accountants (2003-2013): Board member (2005-2013) - Scholarship Committee Member; Seminar Committee Chair: organized annual educational seminars for CPAs
- Lubbock Homeschool Network Board (2016-2019) - President (2018-2019) for organization with more than 2000 member families; established new events; hosted educational seminars and leader summits; updated policies for clarity and fairness

- SPHERE Homeschool, Inc. (2016-present) - Founder; President; Chess Program Coordinator; teacher (speech, leadership, and chess); nonprofit governance; fundraising
- Tournament Director (2022-present) - Directed at 31 rated events including the 2023 and 2024 TCA Regional Championships
- Chess Tournament Organizer (2020-present): Co-Organizer of the Health Checkmate Tournament for players who missed the State Scholastic Championship in 2020; Organizer of the first Post-Lockdown rated event in Lubbock in 2021; Organizer or Co-Organizer of more than 30 rated events in Region I since 2021; handled promotion, communication, registration, venue, prize acquisition, and other details for events.
- Region I Scholastic Representative (November 2023-present)

As you can see, I have experience working with non-profits, skills that are desirable for a Secretary, and I have been actively involved in chess in Region I. As a former farm girl, I know how to take what resources I have and twist them into what I need. I am hard-working, resourceful, and motivated to make things happen. I have valuable skills that can be used to help grow and develop the community further and bring chess to more individuals and families across the state. All I need to get started is your vote!

Endorsement for Amy Jones as Secretary for TCA from Robert Moore, Region I Director

Amy Jones and I have been collaborating on chess activities for over five years. As our partnership has grown, I've been able to witness firsthand just how invaluable her giftedness in organization and record-keeping has been. She has been a clear and effective communicator and promoter of all events in our region. I'm not sure I could adequately articulate just how much she has contributed to chess in the panhandle. She is a consummate professional and has brought that to bear in serving our chess communities.

Amy shares a vision that TCA as an organization should serve all of Texas. I know she will fairly and thoughtfully advocate for all regions and demographics because she is passionate about the benefits chess brings to everyone. Her skillset, passion, and drive to serve make her the perfect candidate for this position, and she has my most unreserved endorsement.

Robert Moore
Region I Director, TCA



Jon Santos

Candidate for Secretary of TCA

Jon Santos is a veteran Chess Coach in the North Houston area for more than 20 years. He has traveled across the United States to 46 of our 50 States to teach Chess to students; Texas is still his favorite place to be. He has dedicated many years serving the local Houston Scholastic Chess community by coaching After-School Chess Programs, Organizing local tournaments, hosting several Chess Camps throughout the Summer, and doing countless chess lectures In-Person and Online.

Jon holds a B.A. in Education (K-12) from the University of Houston-Downtown and has taught countless subjects to Public, Private, Online and the Homeschooling Community. He has greatly enjoyed teaching Texas History while in the classroom and enjoys being involved with his Men's Group at his Church and Outreach Ministries. Jon has a young family and enjoys

taking them to the beach, camping, bass fishing, and to baseball games.

Jon is running for Secretary to be a leading force in growing Chess Scholarships for high-school students and to bring high-quality Tournaments that exceed expectations. He believes that when we elect leaders with strong organizational skills we can achieve great things. Jon is counting on your vote to grow TCA and better Tournaments across Texas!



Dr. Jonathon Singler

Candidate for Treasurer of TCA

For half my life, I immersed myself in the world of chess, viewing it as a lens into human relationships. Professionally, in service to others, I rebuilt the Alaska State Affiliate, earning US Chess awards for membership growth, from forging indigenous and local partnerships as Vice-President, State Delegate, and Scholastic Director. Volunteering for social advocacy, I co-founded a chess nonprofit dedicated to writing grants and organizing fundraisers for veterans with disabilities, prison rehabilitation, Girl Scouts' leadership development, and low-income family programs. In 2023, I earned a Doctor of Education degree from Webster University and developed the first U.S. chess minor degree, of which, I am a professor, overseeing course design and program evaluation to transform future chess educators.

My chess story began nearly two decades ago in Southeast Texas. My friends and I started a high school chess club. Chess was not prominent in our city. Amateur players gathered at a local café on weekends, playing

to win a free coffee or meal donated by an older gentleman who freely gave to others what chess gifted him; a touch of humanity. Years later, serving as Alaska State Delegate, I partnered with major TCA leaders to support their US Chess legislative motions because they were passionate about you, the Texas membership, who do so much for our communities. Returning home to serve where my chess story began is exhilarating and humbling.

My TCA Treasurer candidacy represents chess passion beyond the board and values individuals, communities, and organizations. I have been a TCA member for three years, inspired by the dedication of past and present leaders who have sacrificed and played a great game of Texas chess. I believe we can still improve our position as the largest and most active US Chess State Affiliate. As TCA Treasurer, I aim to enhance chess accessibility across Texas by securing more funds, fostering partnerships, and ensuring transparency. I have helped raise and distribute over \$100,000 for 7,500+ stakeholders, promoting access to chess education and competition, backed by community trust and vision.

If you are willing to vote in confidence for my elected service to you and our state, I promise to serve with ambition and integrity. I also endorse Jim Polomsky for President, Jeff French for Vice-President, and Jonathan Santos for Secretary, as I believe in our collective potential to advance Texas's chess position statewide and nationally with US Chess. Thank you for your membership!



Anna Marie Zuniga-Gonzalez

*Candidate for
Treasurer of TCA*

Dear Texas Chess Association Members,

My name is Anna Marie Zuniga-Gonzalez, and I am excited to announce my candidacy for the position of Treasurer of the Texas Chess Association. My personal and professional journey has equipped me with the skills and passion necessary to contribute meaningfully to our association. I'd like to begin by stating that females are significantly underrepresented in the game of chess, a disparity that not only limits the potential of many talented young minds but also deprives our community of diverse perspectives and skills. As a mother of two daughters, I see firsthand the impact of role models and opportunities on their development and confidence.

We must address this imbalance urgently. By increasing our efforts to support and encourage young female players, we can foster a more inclusive and dynamic chess community. The future of chess depends on our commitment to nurturing and empowering all players, regardless of gender.

Furthermore, I bring to this position a wealth of experience from my previous role as a National Bank Examiner for the Department of the US Treasury. In this capacity, I developed a keen eye for detail, a strong under-

standing of financial systems, and a commitment to ensuring fiscal responsibility and transparency. These are crucial qualities that I will bring to the role of Treasurer to ensure our association's financial health and integrity.

In addition to my background in finance, I have spent the past 20 years as a K-12 Educator, where I have had the privilege of shaping the minds of young learners across various disciplines. This role has honed my organizational skills, my ability to manage resources effectively, and my dedication to educational excellence—all of which are essential for managing the financial operations of the Texas Chess Association.

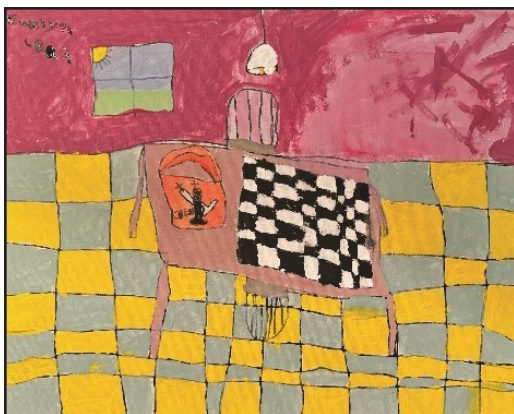
Moreover, as an Education Consultant for the State of Texas, I have worked closely with educators, administrators, and policymakers to enhance the educational landscape of our state. This experience has provided me with a unique perspective on the intersection of education and finance, and I am eager to leverage this knowledge to benefit our chess community.

I am passionate about chess and its potential to develop critical thinking, problem-solving, and strategic planning skills in players of all ages. I am committed to promoting these values within our association and ensuring that we have the financial stability to support our programs and initiatives.

I would be honored to serve as your Treasurer and to work alongside each of you to continue advancing the mission of the Texas Chess Association. Thank you for considering my candidacy.

Warm regards,

Anna Marie Zuniga-Gonzalez



The Last Board
by Evelyn Leal



Innovative Chess Solutions
By Caleb Brown

2024 US National Championships

Additional Information:

<https://uschesschamps.com/2024-us-national-championships>

<https://new.uschess.org/2024-us-national-championships>

The **2024 US National Championships** were held in St. Louis, Missouri, between July 16th and July 26th.

There were three tournaments occurring simultaneously, with 10 players each, including the Senior, Junior, and Girls' Junior National Championships. Each tournament was played in a round robin format (where each player played all others in their respective tournaments one time). There were nine rounds in each of the tournaments. Texas was represented in all three tournaments.

The Senior National Championships

IM Douglas Root was the only Texas player who participated in the *Senior National Championships*. He finished the tournament with a score of 2.5/9. You can find his games starting on *Page 22*.

The Junior National Championships

IM Justin Wang and **IM Andy Woodward** were the two players from Texas that participated in the *Junior National Championships*. Justin finished with a score of 6.0/9, and Andy finished with a score of 5.0/9.

The matchup between Justin and Andy occurred in the eighth round and ended with a draw. You can find Justin's games starting on *Page 24* and Andy's games starting on *Page 26*. The Justin Wang/Andy Woodward Texas Matchup is *Game 10 on Page 26*.

The Girls' Junior National Championships

WCM Rachel Li was the only Texas player who participated in the *Girls' Junior National Championships*. She finished with a score of 4.0/9. You can find her games starting on *Page 28*.

Finally

I recommend that you take a few minutes and visit each of the two 'additional information' websites. The *US Chess Champs* website provides details about each tournament, as well as information about each of the players that competed in the tournaments. The *US Chess* website provides a day-to-day overview of the tournaments, and links to where all of the games played can be found on Chess.com.

Luis Salinas Awarded Outstanding Career Achievement Award

By Caleb S. Brown

Luis Salinas, who unfortunately died earlier this year, was posthumously awarded the Outstanding Career Achievement Award in this year's annual US Chess awards, recognizing decades of service as an organizer, tournament director and volunteer.

The Outstanding Career Achievement Award is the highest US Chess award for volunteer service outside of formal US Chess governance. The Recognitions Committee is responsible for making recommendations for this award to the Executive Board which makes the final decision. The award will be officially presented on August 2 at the awards reception held in conjunction with the U.S. Open in Norfolk, Virginia.

This award comes only shortly after 139 players attended the Luis Salinas Memorial Texas State & Amateur Championship, which was held over Memorial Day Weekend in Fort Worth. Rob Jones suggested the idea of renaming the tournament after Salinas and indeed only five days after Salinas's death the renaming was announced at the South junior chess meeting on March 16, according to the meeting minutes.

It is fitting that the State & Amateur bears Salinas's name considering that he organized it every year it was held from 1998 through 2023, according to uschess.org. Indeed, the 2023 State & Amateur was the very last of 2566 rated events at which Salinas directed since the dawn of online rating records in 1991. Salinas, who was a Senior TD, FIDE Arbiter and International Organizer, received the US Chess Tournament Director of the Year Award in 2011.

Former TCA President Tom Crane said Salinas "was responsible for running every big TCA event for as long as I can remember," including the State Scholastic Championships, the Grade Championships and the Southwest Open.

Crane said that Salinas dedicated most of his adult life to chess, adding that his impact on chess was "immeasurable." Salinas did so mainly through the Dallas Chess Club, which drew over 100 players to its tournaments every Friday night in its heyday, Crane said. Salinas was the DCC President.

"I told my students as they were coming up that the measuring stick for progress was the DCC Friday night tournament," Crane said.

He also said that Salinas mentored almost every tournament director in North Texas as well as many others across the state.

"If you had a question about a policy or rule you could always call his cell and he would help you out," Crane said. "If you needed advice regarding negotiating with a hotel for a big tournament you could just call him. He knew all the hotels that would give you favorable deals and what they would negotiate on."

Crane also said that any article about Salinas's impact would be remiss without crediting the work of TCA and DCC Treasurer Barbara Swafford "as she was the administrative arm that made all things Dallas Chess Club and major tournaments possible."

Carmen Chairez, who played in many tournaments Salinas organized, shared similar sentiments. He said that Salinas was so well respected as an organizer and a person that many people would want to help him when he asked.

He recalled a time when a tournament hall was filled with over 600 elementary students. "The teachers and parents have never seen so many children so quiet," Chairez said.

"He was so well organized that players flocked to his tournaments," he said. "Once you mentioned Luis Salinas, that was the tournament to go to."

TCA Webmaster Chris Wood described Salinas in his en passant announcement on texaschess.org as one of the most prolific organizers and tournament directors in the country.

"His impact on chess in DFW and Texas cannot be overstated," Wood said.

Salinas also had a major impact on chess through his cumulative efforts across dozens of TCA membership meetings starting in the early 1990s if not sooner. He successfully proposed creating the annual junior chess meeting, according to the 1994 special meeting minutes. He also proposed the successful division of the State Scholastic Championship into two separate events, one for North Texas and one for South Texas, according to the 2014 annual meeting minutes. He was also responsible for setting the voting age at 16, according to the 2009 annual meeting minutes. Indeed, even though membership meetings are usually held only twice a year, he attended at least 42 meetings and made at least 82 motions.

The minutes also show his activity in other ways. Salinas was elected TCA Vice President in 1994 in

what may have been the only tied election in TCA history (his opponent conceded because his candidacy was erroneously advertised at an Austin chess club and he was too busy for the position), according to the 1994 annual meeting minutes. In addition to two years as TCA Vice President, Salinas served as a US Chess Regional Vice President in 1995, a US Chess Delegate for six years and a TCA Regional Director for two years, according to meeting minutes from the 1990s and early 2000s.

Salinas was also active in the college chess community. After serving honorably in the Navy he attended Texas A&M to study electrical engineering and be-

came club president, according to an article by former TCA Vice President Jim Hollingsworth on texaschess.org. Later Salinas worked as Assistant Chess Program Director at The University of Texas at Dallas for over 18 years, according to his LinkedIn profile.

Hollingsworth described Salinas as a man of renown and a friend to all chess players in the article. "Few are as knowledgeable as he about Texas Chess Association Bylaws, bidding procedures, and tournament administration," Hollingsworth said.

"He didn't do it for the money," Crane said. "He did it for the love of the game and his passion for people."

Review: The Chessnut EVO Electronic Chess Set

By Jeff French

If you have paid any attention at all to electronic chess sets over the last few years, you have probably realized that there are a number of new players in the industry. Most e-board manufacturers like Fidelity, Novag, Saitek, etc. don't even exist anymore (with the exception of DGT and Millenium). Now you will find names like ChessGo, Chessnut, ChessUp, and others. But, DGT and Millenium are both exceptions in that they have both been around for quite a while and both have moved into the newer online capable general consumer electronic chess set manufacturing.

I have provided reviews for a couple of these newer boards in prior issues of *Texas Knights*. In particular, the Square Off Pro, the Chessnut Air, and two DGT models: the online-capable Pegasus and the standalone Centaur.

The *Chessnut EVO* is the subject of this review. This board is, at its simplest definition, an electronic chess board with an Android tablet attached. It has a wooden enclosure, weighing in at around 10 lbs. It can be used offline to play against different engines, analyze games, etc. and also has online options. In fact, the EVO allows using the physical board with current, and likely future, websites, videos, books, periodicals, and Android apps.

Chess.com and LiChess.org, Chesskid, and Chessable are all directly supported. And, with the built-in Chessnut Vision Service, chess website and app support extend far beyond just those. In fact, I have found that Gameknot.com, ChessWorld.net, and even sites more aimed at training, like AimChess, Chess King Learn, Chessvis, and Chess Lab, also work with the Chessnut Vision Service enabled on the EVO.

'Supported' in this case means you can play or study on these sites using the physical board. I haven't found any other electronic sets that even come close to doing what the EVO is capable of. But, in reality, the app support (also means you can read, for example, ebooks or PDFs by following along on the physical board. Plus, sites and apps providing interactive chess books from New in Chess, Quality Chess (Forward Chess), and others can also make use of the EVO physical board to follow along with their interactive diagrams while reading chess books. Add that same support for videos, whether streamed or played in a local media player, and you have the ability to follow along on the physical board with pretty much any chess media available (books, periodicals, and videos) both online or off.

The Chessnut Vision Service is totally unique to the Chessnut EVO compared to any other boards I have reviewed or read about to date.

Add to the list of features already mentioned, like support for chess engines (Maia, Stockfish, and Lc0 are already installed) with the ability to download other engines. Creating personalities is also an option. You can capture OTB games with an opponent. And there is also an 'Improve your ELO' training option. Basically, the EVO is a chess partner that should be able to assist in improving your chess prowess in any form you prefer while playing or training.

Analysis on the EVO is both realtime move-by-move and a recently added game review feature. There is the ability to start at the opening position (i.e., the initial start position), from a setup position and moving pieces on the physical board, or by loading a

recorded game. Once a couple moves are present, a review option with results shown using the typical move rating system, from best move to blunder, is now possible.

Let's delve a little deeper into the personalities I just mentioned. Imagine that you are getting ready to play an opponent in an OTB tournament and want to simulate practicing against him/her. You can create personalities and select those personalities to play against. There is a service on the Chessnutech website called the ChessMind Platform that will be used during the personality creation process. There are plenty of samples and tutorials for creating and using personalities. **Note:** There can be fees associated with creating personalities. The board provided to me came with the ability to create ten personalities for free. I've read in social media posts that you may be able to ask for those ten free personality creations., if they aren't included with your purchase. Ask!!!

Probably the most important feature allowing EVO's flexibility, as previously mentioned, is that it runs on Android. This allows the manufacturer to add/improve functionality, such as the Chessnut Vision Service. It also provides access to websites with the pre-installed Firefox web browser and the ability to install other Android chess apps that, either directly or with the Chessnut Vision Service, allow use of the physical board.

There are also plenty of third party options. There is a driver available that allows Windows chess applications to be used with the physical board of the EVO. Android-based chess applications install directly on the EVO will already have the ability.

There is a lot to this chess set. So, I do recommend that if there is interest, find other reviews (including on YouTube). Also, the Chessnutech website provides video tutorials promoting many of the features available. I have also recorded YouTube videos. Search for **texasknightseditor7117** to find EVO specific, and other chess-related, videos. Let me know if there is a chess-related video you would like me to consider.

Here are a couple areas I would like to see either improved in the current model, or added to future EVO models.

1-Access to USB Flash Drives plugged into the USB-C port using a OTG cable for accessing chess media (videos, books, etc.). Rather than having to copy them to internal storage. Connecting a flash drive currently just hangs the UI. But remember, since the EVO has WiFi support, that you could install a better

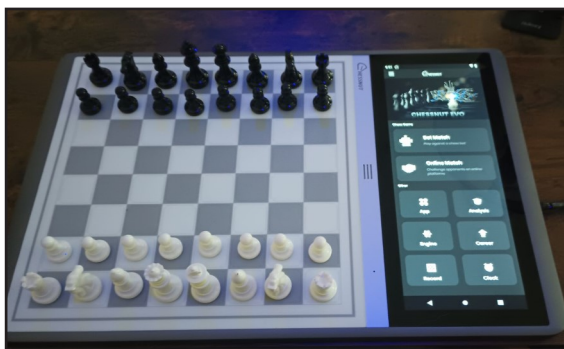
file manager, such as the free *CX Explorer*, allowing access to shared folders located on other devices.

2-The *Google Play Store* and prerequisites are NOT available on the EVO. I have a rather large number of chess apps that I have paid for the 'Pro' versions on the Google Play store. I'd like to be able to install them. Instead, an app store called Aptoide is recommended. It's ok, but it's not Google Play Store, just like the Amazon App Store isn't either. I tried to manually install everything required for the Play Store based on different tutorials. I was never successful in getting it to work, even though the install was successful, it always crashed when it ran.

3-It would be nice to have an SD or MicroSD slot in future models. Although flash drive support would suffice now, if it worked.

4-Opinion: The display lying flat is the big disadvantage of the EVO vs. other e-boards (Chessnut or otherwise), where an external device can be placed on a stand and tilted to the best viewing angle. I'd like to see the next model add a titling display.

I do believe, even without the aforementioned improvement areas, that the EVO is in a class by itself. The Chessnut Vision Service provides expansion that is currently unmatched elsewhere. I'd personally be willing to purchase it, if it were available, for other Chessnut e-boards.



The \$899.99 retail price tag of the EVO is going to be a significant factor in determining whether someone will purchase this e-board. Recent sales have the price sitting at less than \$535. I have provided a link on my Facebook page where you can secure an *additional 2% off any* of the Chessnut e-boards available for purchase (in addition to discounts off the current sale price). <https://Facebook.com/TexasKnightsEd>.

My next review will cover the portable *Chessnut GO*.

Tactics Time!

by Tim Brennan

These positions came from games played in Texas (or elsewhere) by at least one Texas Player.

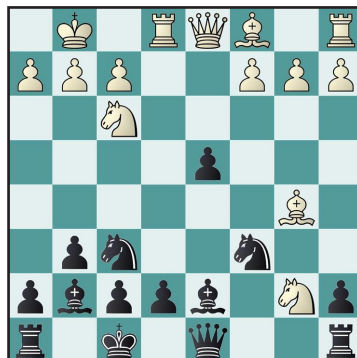
Answers can be found on page 18.



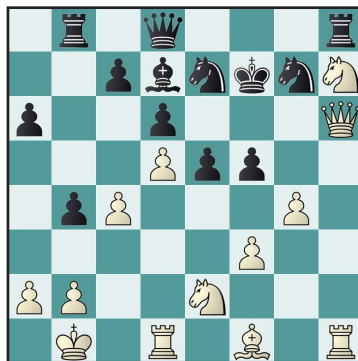
1. K. Zhao – D. Benavides
South Texas State Scholastic 2024
White to Move



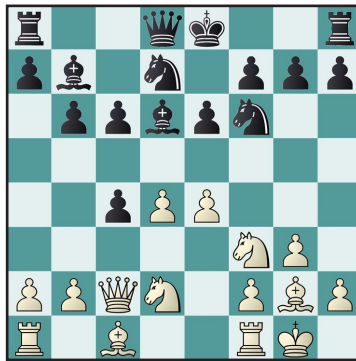
2. M. Quezada – P. De Silva
South Texas State Scholastic 2024
Black to Move



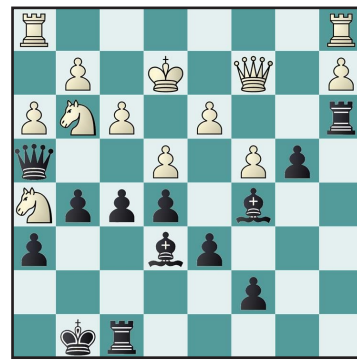
3. A. Aparicio – T. Borse
South Texas State Scholastic 2024
Black to Move



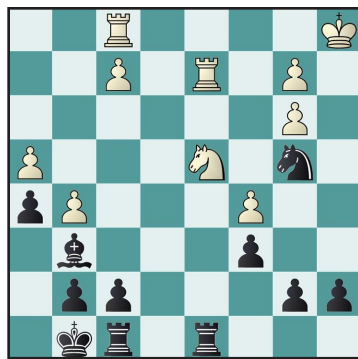
4. M. Zenteno – G. Gonzalez
South Texas State Scholastic 2024
White to Move



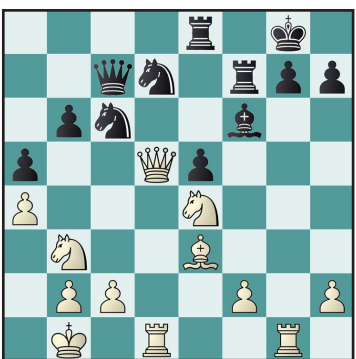
5. B. Tovias – J. Barros
South Texas State Scholastic 2024
White to Move



6. S. Zhang – Dh. Namala
South Texas State Scholastic 2024
Black to Move

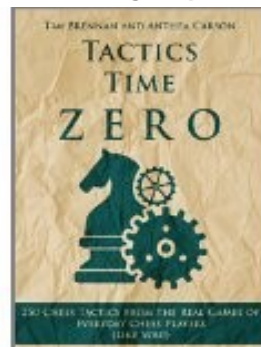


7. L. Samples – S. Vuyyuru
South Texas State Scholastic 2024
Black to Move



8. R. Trakru – B. Tovias
South Texas State Scholastic 2024
White to Move

Available Digitally Now!!!



www.amazon.com/dp/B014AL1FRG/

US CHESS TOP PLAYERS OF TEXAS - July 2024

Regardless of Residence or Federation

Overall			Age 17			Age 10		
13	Xiong, Jeffery	2712	50	Qin, Kevin	2151	42	Kolli, Rishi	1824
14	Onischuk, Alexander	2708	98	Yang, Benjamin	2012	56	Tendulkar, Ojas	1727
34	Li, Ruifeng	2641	100	Mysore, Abhinav Naveen	2007	59	Jackson, Leo Daniel Olivera	1715
35	Matviishen, Viktor	2638				84	Vuyyuru, Aryan	1618
40	Vazquez, Guillermo	2627				90	Garcia, Kaiser Troy	1601
43	Stukopin, Andrey	2620	10	Laddha, Shubh Jayesh	2341	91	Serikar, Arav	1599
59	Woodward, Andy Austin	2597	39	Gardezi, Aarsal	2184	97	Praveen Kumar, Mithun Pranav	1569
63	Maciej, Bartlomiej	2593	70	Lomakina, Anzhelika	2079			
64	Wang, Justin	2591	80	Wang, Andy Y	2059			
68	Beradze, Irakli	2580	86	Friedman, Andrew Charles	2039	10	Zhang, Oscar Yihang	1997
78	Druska, Juraj	2566	100	Chandran, Harish	2020	18	Maddipati, Srihas Sai Sarvesh	1881
80	Hernandez, Holden	2560				30	Manchanda, Advik	1806
81	Duque, Sm Raymond D.	2559				41	Yao, Annie	1706
84	Belous, Vladimir	2556	6	Kunka, Harshid	2411	44	Liu, Chloe	1682
89	Root, Douglas D	2551	9	Gutla, Aryan	2346	46	Zhang, Lawrence	1677
95	Steingrimsson, Hedinn	2541	10	Melillo, Lucius	2335	48	Wang, Nathan Zicheng	1669
96	Deviprasath, Sharvesh R	2540	20	Nandhakumar, Vaseegaran	2244	65	Rajagopalan, Aadhya Jay	1587
			37	Hiwale, Ronak	2150	71	He, Julian	1567
			55	Shafer, Logan C	2117	72	Bee, Leonel	1566
			68	Bist, Atharva	2082	75	Baksi, Antariksh	1557
			84	Zhang, Eric J	2039	83	Yang, Matthew	1508
			89	Dasari, Saathvik	2024	92	Muthiah, Yugan	1471
Age 65 and Over			Age 14			Age 8		
3	Duque, Sm Raymond D.	2559		1 Woodward, Andy Austin	2597	15	Lan, Kai Zhou	1713
10	Bradford, Joseph Mark	2444		2 Chen, Ryo Wenyu	2499	23	Li, Owen	1626
57	Simms, Gary	2207		3 Liu, Eric Chang	2446	24	Iskandarov, Elvin	1623
64	Rohrbaugh, James Vincent	2203				50	He, Jayden	1453
68	Hulse, Brian	2200	13	Li, Rachael	2290	75	Wang, Mark	1350
68	Weaver, Richard	2200	44	Raju, Yakshwag Reddy	2140	83	Chang, Abel	1319
68	Anderson, Selby K	2200	66	Polisetti, Lohit Krishna Narayana	2054	85	Veretennikov, Benjamin Ryan	1307
68	Calogridis, Michael S.	2200	67	Nair, Ajitesh	2053			
68	Harrington, Robert	2200	72	Zhou, Brian Xing	2040			
Age 50 and Over			91	Bayyrapu, Mohit Sreejan	1978			
13	Duque, Sm Raymond D.	2559	91	Mynala, Rahul	1978			
14	Root, Douglas D	2551						
30	Bradford, Joseph Mark	2444						
83	Feinstein, Michael	2251						
Under Age 21			Age 13					
6	Woodward, Andy Austin	2597	13	Meng, Joshua	2208			
7	Wang, Justin	2591	19	Fang, Elbert	2175			
13	Deviprasath, Sharvesh R	2540	21	Singh, Siddharth	2171			
17	Chen, Ryo Wenyu	2499	44	Yang, Daniel	2060			
27	Vivekananthan, Anish	2469	62	Gu, Samuel	1956			
35	Liu, Eric Chang	2446	68	He, Justin Shandong	1939			
37	Rorrer, Grayson	2438	71	Wei, Colin	1921			
48	Kunka, Harshid	2411	90	Zafar, Faris	1887			
67	Obero, Shelev	2350						
73	Gutla, Aryan	2346						
78	Laddha, Shubh Jayesh	2341						
84	Melillo, Lucius	2335						
Age 18			Age 12					
2	Deviprasath, Sharvesh R	2540	10	Anandh, Vijay Srinivas	2200			
6	Rorrer, Grayson	2438	15	Wang, Kyle Y	2129			
9	Obero, Shelev	2350	47	Bhangale, Likhith	1970			
22	Gundam, Rohit	2263	50	Vuyyuru, Shriyan	1954			
54	Trakru, Rohun	2139	59	Shen, Yangyang	1933			
82	Pullabhotla, Venkata	2039	67	Ramachandran, Advait	1914			
91	Trey, Justin	2007	75	Joseph, Julian	1887			
95	Tang, Andrew	1997	96	Petukhov, Arthur	1826			
97	Sathiaran, Sarvadh	1992	97	Kandikayala, Srikar	1825			
98	Miller, Collin Alexander	1986						
Age 17			Age 11					
27	Yuan, Owen	1939	63	Wu, Zekai Bryson	1836			
69	Zhang, Ellery	1821	69	Vyas, Miransh Purven	1782			
90	Santhosh, Pranav	1735						
Women			Women Age 65 and Over					
23	Paramzina, Anastasia	2329						
25	Nguyen, Emily	2325						
33	Li, Rachael	2290						
Women Age 50 and Over								
7	Root, Alexey	2000						
34	Kent, Nadia Taylor	1504						
44	Stuckert, Elena	1427						
64	Kneen, Melanie Anne	1212						
74	Hardesty, Brenda T	1068						
100	Pulliam, Landra	790						



Girls Under Age 21

10	Li, Rachael	2290
31	Yellamraju, Ambica	2081
33	Lomakina, Anzhelika	2079
55	Nguyen, Anh Nhu	2012
69	Prakash, Nandini	1947
74	Shen, Yangyang	1933
83	Yellamraju, Aparna	1918
86	Zhang, Sunny	1911

Girls Age 18

32	Naidu, Suchitra Ganesh	1478
39	Vasquez, Izabel Amparo	1357
48	Athila, Akshaya	1246
54	Mallick, Lipika	1155
64	Parvathaneni, Voshita	1017
67	Morales, Natalia Aseneth	1002
74	Sanchez, Joann Rachel	937
80	Zermeno, Mia A	879
81	Cisneros, Anahi	872
90	Stephens, Jocelyn	706
97	Varanasi, Sriharshita	592

Girls Age 17

21	Yu, Vicky	1651
46	Zhang, Taylor Chengyue	1373
50	Solis, Natalie	1334
51	Cardin, Maddie	1320
66	Thornhill, Eowyn	1202
66	Zeng, Zichang	1202
68	Wickramasinghe, Binadie	1200
72	Adams, Sapphire	1161
73	Nitturi, Rajni	1137
79	Torres, Asia	1048
80	Deleon, Christina Marie	1046
86	Pilla, Ananya Valli	972
94	Huynh, Kai	937
99	Osoinach, Ontario B	878

Girls Age 16

3	Lomakina, Anzhelika	2079
16	Roy, Aanya	1821
20	Wang, Kalina Yuke	1783
29	Gupta, Sara Sachin	1706
33	Reddy, Tanvi Chinthagunta	1655

Girls Age 16

56	Sun, Yimeng Jenny	1409
57	Ham, Emily	1400
68	Seals, Ayre Allbritton	1300
74	Pande, Nayonika	1270
92	Reddy, Laxmisri V	1148
98	Corisipati, Adithi	1114
99	Nair, Pallavi	1112
100	Srivatsan, Ananya	1105

Girls Age 15

37	Singh, Sejal	1620
50	McNutt, Kaitlynn Lee	1464
56	Akella, Sravya	1424
62	Ande, Eesha K	1385
66	Laskaris, Evie	1329
69	Sharan, Neha	1310
70	Kirumaki, Shreya A	1307
80	Cruz, Vivica Renee	1255

Girls Age 15 (continued)

89	Torres, Sahara J	1176
94	Pyle, Abigail	1152
95	Caldera, Sophia M	1125

Girls Age 14

2	Li, Rachael	2290
11	Prakash, Nandini	1947
14	Zhang, Sunny	1911
32	Hosur, Sanmita	1657
38	Stubbins, Isabella	1624
47	Krishnan, Mihika	1562
56	Shankar, Aashritha Vidhya	1490
63	Tiruveedhula, Suhavi	1399
68	Callens, Jael	1369
89	Ford, Katherine Michelle	1180

Girls Age 13

21	Namala, Dhanvi	1740
22	Borse, Tanvi	1725
32	Vinayagaram, Nethra	1630
37	Pidathala, Esha	1592
51	Raghuraja, Sri Yashvi	1461
64	Krafka, Christina	1292
79	Vijayaraghava, Aditi	1215
82	Song, Lucia	1184
92	Velu, Shambhavi	1121
97	Jiang, Jasmine	1102
100	Nair, Aditi	1094

Girls Age 12

3	Shen, Yangyang	1933
6	Zhang, Alicia S	1794
21	Rios-Ocampo, Sofia	1548
29	Maddipati, Srijani Sai	1455
43	Zamarripa, Salma	1303
51	Kuchibhatla, Nitya	1222
69	Quezada, Miranda Isabela	1086
76	Nguyen, Suri Ngoc	1056
82	Perez, Andrea	1011
87	Bustinza, Lia A	990
91	Garza, Brithany H	945
97	Muniz, Paola L	929
99	Lu, Andie	922

Girls Age 11

11	Zhang, Ellery	1821
24	Fu, Elaine	1640
40	Senapati, Avni	1498
59	Duran, Violet	1292
61	Mandapati, Shriya	1286
71	Kalavagunta, Saanvika C	1238
78	Liu, Mina	1174
85	Perel, Livia	1107
94	Palamarthy, Shreya	1067
95	Parame, Frances Jamie	1066
97	Hiwale, Riona	1060
99	Diwan, Kiara	1053

Girls Age 10

14	Choi, Nyla	1541
15	Vijay, Sahasra	1517
29	Sun, Claire	1324

Girls Age 10 (continued)

48	Borse, Anushka	1112
56	Galvan, Ashley	1051
69	Wong, Zoe	1011
77	Guzman, Lua	975
85	Villegas, Valentina Loretto	941
86	Kaul, Anika Shambhavi	936
94	Anbalagan, Ananyasree	912

Girls Age 9

5	Yao, Annie	1706
6	Liu, Chloe	1682
25	Ganesh, Kaira Ananya	1227
32	Saha, Prateeti	1147
70	Zhao, Lily	897
72	Ganesh, Jiya	888
76	Patino, Eliana	868
78	Cruz, Julia A	853
85	Banala, Ira Jaya	825
86	Noyola, Arianna	823
87	Loera, Samantha Nicole	821
88	Raina, Advika	820
95	Wali, Zarmina	789

Girls Age 8

21	Shi, Jiahui	1243
25	Peng, Grace	1191
33	Wang, Erica	1064
64	Sony, Neha Teresa	827

Girls Age 7 and Under

20	Rodriguez, Morgana Elizabeth	922
22	Lee, Davine	865
23	Arambul, Zoey	830
40	Thalapaneni, Sarayu	700
48	Cantu, Isabella	673
56	Manchanda, Annika	616
61	Ramos, Ashley	596
74	Webber, Evelyn Alyssa	529
74	Martinez, Alessandra	529
80	Garcia, Natalia M	509
85	Vignesh, Laksha	491
91	Roig, Charlotte	471
93	Gonzalez, Jaylin Rose	461
94	Sepulveda, Izabella Lee	460
95	Leos, Aria Gisel	455



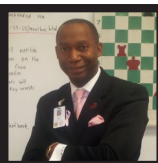
Tactics Time! Answers - Download Now (see page 21)

1. **22. Rxc6!** Wins a piece. If **22... Rxc6** **23. Bd5** pinning the Queen to the King. If **22... bxc6** **23. Qxb8+**
 2. **16...Rxd4!!** White can't capture the Rook because of **17.Qxd4 Bc5** pinning the Queen to the King.
 3. **11...Qb6** forks the Bishop and Knight.
 4. **23.Ng5+ Ke8** (23...Kf8 24.Qf6+ Kg8 25.Qf7#) **24.Qxh8+ Ng8** **25.Qxg8+ Ke7** **26.Qf7#**
 5. **10. e5** pawn fork
 6. **25...f4** attacks the f3-Knight defending the h5-Knight
 7. **26...Rxd4!** **27.Rxd4 Nc2+** **28.Ka2 Nxd4**
 8. **24.Qxd7 Qxd7** **25.Rxd7 Rxd7** **26.Nxf6+** forking the King and Queen.
- Cover. **25.Qxc5** taking advantage of the pin.

Tactics Time courses are now available on Chessable by Tim Brennan & Anthea Carson

Tactics Time 1: <https://www.chessable.com/tactics-time-1/course/21108/>

Tactics Time 2: <https://www.chessable.com/tactics-time-2/course/24008/>



Coach's Corner - e4! **The Chess Top 40, Part 5** by Robert L. Myers

*** Editors Note:** *The Chess Top 40* began in the **Nov-Dec 2023** issue of Texas Knights and this part concludes the article.

10) Knights before Bishops: Man, how well do I know this tip. One of my students asked me, "Coach, what is your favorite piece?" To his surprise, I said, "All of 'em." I mean, I do like my knights and even have names for each of them, but, in truth, each piece is not a part of my body, but I value each piece as it is. The knights are precious in my sight, especially in the opening. It's often advisable to develop knights before bishops. Knights can jump over other pieces so they don't get in the way of your pawn structure and other pieces. This allows for efficient control of the Center. The traditional chess opening strategy often involves moving knights before bishops. There are a few reasons for this: control of the Center, development, pawn structure, and flexibility. Knights have the unique ability to jump over other pieces, allowing them to quickly reach and control the central squares of the chessboard. Controlling the Center: is a fundamental principle in chess because it provides greater mobility and influence over the board. Development: Bringing the knights out early helps in the development of pieces. Knights can be developed to central squares, and from there, they can influence different parts of the board. Bishops, on the other hand, often need more careful consideration in terms of where they are placed, as their diagonal movement can be limited by pawn structures. Pawn structure: Moving pawns to open up lines for bishops can sometimes be a slower process, as advancing pawns can create weaknesses. Knights, being able to jump over other pieces, can be more easily maneuvered to key

squares without disturbing the pawn structure. Flexibility: Knights are generally more flexible in their movement compared to bishops, especially in the early stages of the game. They can jump over other pieces, allowing for more varied paths of development.

It's important to note that these are general principles, and there are exceptions and variations based on specific openings and strategies. The order in which pieces are developed can vary based on the specific goals of a player or the demands of a particular position. However, the idea of developing knights early is a common guideline in many chess openings.

11) Avoid Moving the Same Piece Twice in the Opening: In the opening, focus on developing different pieces before revisiting the same piece. This principle promotes efficient piece development and helps avoid wasting precious moves. The principle of not moving the same piece twice in the opening phase of a chess game is based on the idea of efficiency and development. Here are several reasons why this principle is generally considered a good guideline in chess: Development: In the opening, it's crucial to bring as many pieces into play as quickly as possible. By moving different pieces in the opening, you're ensuring that you're developing your entire army and not just one or two pieces. This helps in controlling the Center of the board and preparing for the middle game. Time Management: Every move counts in

chess, and moving the same piece twice in the opening can be a waste of time. You could be using that time to bring other pieces into play or to control key squares on the board. Control of the Center: Typically, a good opening strategy involves controlling the Center of the board. The Center provides a strong foundation for launching attacks and maneuvering your pieces effectively. By moving different pieces in the opening, you increase your chances of controlling the Center early in the game. Avoiding Weakness: Moving the same piece multiple times in the opening can create weaknesses in your pawn structure or expose your King to potential threats. Developing all your pieces evenly helps maintain a solid position. Initiative: The player who controls the initiative often has an advantage. By developing all your pieces and controlling the Center, you are more likely to dictate the flow of the game and force your opponent to react to your moves.

Chess often involves tactical opportunities, such as forks, pins, and skewers. These tactics can turn the game in your favor, but you must recognize and capitalize on them. Moving too fast may cause you to miss these opportunities and allow your opponent to gain an advantage. Within these Top 10 Tips, there are exceptions to each. Very little in chess is absolute. Moving the same piece twice may be justified in certain positions if it serves a specific purpose, such as correcting a positional mistake or responding to an immediate threat. However, as a general guideline for beginners and intermediate players, focusing on developing different pieces in the opening is a sound strategy. As you gain more experience, you may learn when and how to deviate from this principle based on the specific demands of the position. Due to a relative lack of experience, you may occasionally miss easy breakthroughs in your games. You may plateau after spotting missed tactics later in several games, leading to inaccurate play. This has occurred in my player's games and caused them to drift into a worse position and time trouble.

These tips are important for several reasons before each move: Strategic Planning: Chess is a game of strategy and planning. Tips before each move help

players to think strategically about their next move, considering short-term and long-term goals. This includes evaluating the current position, identifying threats, and planning the most effective way to achieve their objectives. Tactical Awareness: Chess involves a significant amount of tactics, such as forks, pins, skewers, and discovered attacks. Tips can help players stay alert to tactical opportunities and threats, allowing them to make moves that exploit weaknesses in their opponent's position or defend against potential threats. Positional Understanding: Understanding the nuances of the position on the board is crucial. Tips can provide guidance on important positional concepts, such as controlling the Center, pawn structure, piece activity, and king safety. This understanding helps players make moves that improve their overall position. Opening Principles: Tips often include advice on opening principles, which are essential for a solid start in a chess game. Knowing how to control the Center, develop pieces efficiently, and ensure the safety of the King are fundamental principles that can set the stage for the middle game. Time Management: Tips can also help players manage their time effectively. Time is a valuable resource in chess, and making decisions in a timely manner is crucial, especially in faster time controls. Tips can encourage players to allocate their time wisely and focus on critical moments in the game. Learning and Improvement: Chess is a game of continuous learning. Tips before each move can serve as a tool for improvement. By understanding the reasoning behind certain moves, players can enhance their chess knowledge and develop a deeper understanding of the game. Adapting to the Opponent: Tips can guide players on how to adapt their strategy based on the opponent's moves. Recognizing the strengths and weaknesses of the opponent's position allows for more informed decision-making. Remembering these tips before each move will contribute to your overall understanding of the game, helping you make well-informed and strategic decisions. This contributes to better gameplay, increased tactical awareness, and ongoing improvement as a chess player and should help you with happier facial expressions; as we say before each online game, "GL," good luck. *

Robert L. Myers is a Level V Candidate for Master Chess Coach, High School Basketball Coach, freelance writer, and an award-winning 30-year veteran classroom educator. You can follow "Coach" on social media and at www.thechessacademy.com





New Chess Books

By Dr. Alexey Root, WIM

Dr. Alexey Root volunteers for the Texas Chess Association by writing this column.

- She was the 1989 U.S. Women's Champion.
- She is the Chessable Research Awards Coordinator:
https://www.chessable.com/research_awards
- She also teaches Chess Online courses for UT Dallas. Find registration information here:
<https://www.utdallas.edu/chess/education-programs/>
- Find her books here: <https://amazon.com/author/alexeyroot/>

International Chess
Master
My Family and Chess
Story with Selected Games
and Pictures

Rade Milovanovic

Self-published in 2021, *International Chess Master My Family and Chess Story with Selected Games and Pictures* is by Rade Milovanovic. The book is 246 pages. Milovanovic completed it in September of 2021. It retails for \$38.00 for a print book. It is also available as an ebook (\$10.00).

Since I reviewed this book for SparkChess in November of 2022, this New Chess Books column shares more about Milovanovic and about Luis Salinas. Both were colleagues of mine at The University of Texas at Dallas (UT Dallas).

Two-thirds of the UTD Chess Program

For almost 20 years, two-thirds of the UT Dallas Chess Program consisted of two men, Coach Rade Milovanovic and Assistant Director Luis Salinas. The other third of the program was its director, a role held by Dr. Tim Redman from 1996–2006 and by Jim Stallings from 2006 to the present. I cooperate with the chess program as I teach online courses about chess and education for UT Dallas.

Born November 12, 1954, Milovanovic spent the first half of his life in or near Tuzla. He earned his IM title in 1988. One highlight of his chess-playing career was being on the second-place team of Bosnia and Herzegovina at the 1994 Chess Olympiad in Moscow. The top Russian team finished ahead of Bosnia and Herzegovina, but the Russian "B" team finished behind it in third place.

Because of the Yugoslav Wars, Milovanovic, his wife

Snjezana, and his two daughters immigrated to Dallas. Although he had been a lawyer in Serbia, Milovanovic began working as the UT Dallas chess team trainer in 1999. That role evolved into a full-time coaching position. Milovanovic led the chess team to 10 first-place finishes in the Pan-American Intercollegiate Team Chess Championship (Pan-Am), a record unsurpassed by any other collegiate chess coach. He retired shortly after the 2018 Pan-Am to spend more time with Snjezana, who passed away in 2021. His eldest daughter predeceased them. Milovanovic died February 3, 2024, leaving behind his daughter Kristina and son-in-law Omar Khan and their two children.

Born November 12, 1956, Luis Salinas grew up in Laredo, Texas. After serving in the United States Navy, he earned a degree from Texas A&M University in electrical engineering. He worked in that profession before joining UT Dallas in 2001. From being chess club president at A&M to running the Dallas Chess Club and serving as the Assistant Director of the UT Dallas Chess Program, Salinas made his life in chess. Although his chess playing was at a high level, earning a US Chess expert rating, Salinas was better known as one of the most prolific tournament directors and organizers in the United States.

Salinas retired from UT Dallas in January of 2020, and the Dallas Chess Club stopped leasing a building during the COVID-19 pandemic. Still, Salinas continued to organize and direct tournaments. He died March 11, 2024. To honor his legacy, the 2024 Memorial Day weekend tournament was renamed the "Luis Salinas Memorial 79th Annual Texas State and Amateur Championships."

Links relating to the article

Book: <https://app.thebookpatch.com/BookStore/international-chess-master-my-family-and-chess-story-with-selected-games-and-pictures/bb148031-32b4-47a1-a612-3447b0f8cf13>

SparkChess: <https://www.sparkchess.com/memoir-by-former-ut-dallas-chess-coach-rade-milovanovic.html>

Upcoming Events



All event information can be found directly on the *Texas Clearing House Calendar* by clicking/tapping <<here>>, by using the QR Code at the left, or by visiting <https://texaschess.org> and selecting *Tournaments* and then selecting *Texas Clearing House Calendar*.

Game Index

+ = Additional Games in Games PGN file.

* = No Article Associated with Games.

#	Tournament	ECO	Result	Annotated by	Rnd	Date	Page(s)
1	U.S. Senior Championships 2024+	C02	1-0	Fritz 19	2	17.07.2024	22
2		D37	0-1		6	21.07.2024	22-23
3		E70	1-0		7	23.07.2024	23
4		D45	0-1		8	23.07.2024	23-24
5	U.S. Junior Championships 2024+	D44	1-0	Fritz 19	1	16.07.2024	24
6		C50	0-1		2	17.07.2024	24-25
7		C72	1-0		3	18.07.2024	25
8		E01	0-1		4	19.07.2024	25
9		D78	0-1		9	24.07.2024	25-26
10	*** Justin Wang/Andy Woodward Matchup ***	D02	½-½	Fritz 19	8	24.07.2024	26
11		B90	0-1		1	16.07.2024	26-27
12		A45	0-1		4	19.07.2024	27
13		B90	1-0		6	21.07.2024	27-28
14	U.S. Girls' Junior Championships 2024+	B21	0-1	Fritz 19	1	16.07.2024	28
15		A31	0-1		3	18.07.2024	28



Game/Tactics Time! Puzzle PGN files are downloadable by using this link: <https://bit.ly/3qK7YQB> or by scanning the QR Code at the left.

Note: Not all issues have associated PGN files.

1

Kraai,J. (2356)
Root,D. (2463)

1.e4 e6 2.d4 d5 3.e5 c5 4.c3 Nc6 5.Nf3 Qb6 6.Bd3 cxd4 7.0-0 C02: French: Advance Variation. 7...Bd7! 8.Re1 Rc8 9.Nbd2 The position is equal. 9...dxc3 10.bxc3 Nge7 [10...Na5=] 11.Rb1 Qc7 12.Nb3 Ng6 13.Nbd4 [13.Qe2 was preferable.] 13...Ncxe5= 14.Nxe5 Nxe5 15.Bf4 Bd6 [15...Qxc3? 16.Bxe5 Bb4 17.Nc2+] 16.Bb5! Nc6N [16...Bxb5? 17.Nxb5 Qe7 18.Nxd6+ (18.Bxe5 Bxe5 19.Rxe5 a6; 18.Rxe5 Bb8) 18...Qxd6 19.Bxe5+; Predecessor: 16...a6 17.Nxe6 fxe6 18.Bxe5 Bxe5 19.Qh5+ g6 20.Bxd7+ Kxd7 21.Qxe5 Qxe5 22.Rxe5 b5 0-1 Vella Ramirez,A (1980)-Grabuzova,T (2248) ESP-ch Seniors 50 Altea 2022 (7)] 17.Bxd6 [17.Bxc6 bxc6 18.Bxd6 Qxd6 19.Nf5] 17...Qxd6 18.Nf5 Qc5 Threatens to win with ...0-0. [18...Qf4 is more complex. 19.Nxg7+ Kd8 20.c4 Rg8] 19.Nxg7+ Kf8 [Black should play 19...Kd8] 20.Nh5!† And now Qf3 would win. White has strong compensation. Black is under pressure. 20...b6? [20...Qxc3 21.Re3 Qc5] 21.Nf6 Qd6 [21...Qe7 22.Qf3 Qd6] 22.c4 d4 23.Qh5 h6 24.c5 Qe7 25.cxb6! Qxf6 26.b7 White is much more active. 26...Rb8 27.Bxc6 Bxc6 28.Qc5+ Kg7 29.Qxc6 Rhd8 30.Qa6 [30.Qc7+] 30...d3 31.Qxa7 Qd4 32.Qxd4+ Rxd4 Endgame. KRR-KRR 33.Kf1 Rd7! 34.Red1 e5 35.Rb6 Black must now prevent Rdb1. 35...Rdxb7 36.Rxb7 Rxb7 37.Rxd3= KR-KR 37...Ra7 38.Rd2 [38.Rg3+ might be stronger. 38...Kf6 39.a3] 38...f5 39.Ke2 Ra3 40.Kd1 Kf6 41.Kc1 Ra8 42.Kb2 Rb8+ 43.Kc3 Rc8+ 44.Kb4 Rb8+ 45.Kc5 Strongly threatening a4. 45...Rc8+ 46.Kb6 Ra8 47.Kb5 Rb8+ 48.Kc4 Rc8+ 49.Kb3 a4 is the strong threat. 49...Rb8+ 50.Kc2 Rc8+ 51.Kb2 Rb8+ 52.Ka1 Ra8 53.Rd1 e4 54.Kb2 f4 55.Ra1

Ke5 56.a4 Kd4 [56...e3=] 57.Kc2! aiming for a5. 57...Rc8+ [57...Ra5] 58.Kd1 [White should try 58.Kd2+] 58...Rg8 59.g3 e3? [59...fxg3 was necessary. 60.hxg3 e3] 60.Ke1? [60.gxf4 Rg1+ (60...exf2 61.Ke2) 61.Ke2 Rxa1 62.fxe3+ Ke4 63.Kd2 Rxa4 64.Kc3 Ra3+ (64...Kxe3 is a self mate. 65.f5 Rf4 66.f6 Rxf6 67.Kc4 Rf5 68.h3 Re5 69.Kb3 Kd3 70.Kb4 h5 71.h4 Rd5 72.Kb3 Rb5+ 73.Ka4 Kc4 74.Ka3 Kc3 75.Ka2 Ra5+ 76.Kb1 Ra7 77.Kc1 Ra1#) 65.Kb4 Rxe3 66.h4 Rh3 (66...Kxf4 67.Kc4 Rh3 68.Kc5 h5 69.Kd5 Rxh4 70.Kd6 Rg4 71.Kc5 h4 72.Kc6 h3 73.Kd6 h2 74.Ke6 Rg5 75.Ke7 h1Q 76.Kd7 Rg6 77.Ke8 Qh7 78.Kf8 Rg8#) 67.Kb5 Rxh4 68.f5 Rf4 (68...Kxf5 69.Kc6 h5 70.Kb5 Rf4 71.Kb6 h4 72.Kc7 h3 73.Kd6 h2 74.Kd5 h1Q+ 75.Kd6 Qc1 76.Ke7 Rd4 77.Kf8 Qc7 78.Kg8 Rd8#) 69.Kc6 h5 (69...Kxf5 70.Kd7 h5 71.Kd8 h4 72.Kd7 Ke5 73.Ke7 h3 74.Kd7 h2 75.Kc7 h1Q 76.Kd7 Qb7+ 77.Ke8 Qa7 78.Kd8 Rf8#) 70.f6 Rxf6+ 71.Kc7 h4 72.Kd8 h3 73.Ke7 Rh6 74.Ke8 h2 75.Ke7 h1Q (75...h1R 76.Kd7 Ra6 77.Kc8 Rh7 78.Kb8 Ra1 79.Kc8 Ra8#) 76.Kf8 Rh7 77.Ke8 Rg7 78.Kf8 Qh8#; 60.fxe3++ and the rest is easy. 60...Kxe3 61.Ra3+ Ke4 62.gxf4] 60...exf2+ 61.Kxf2 fxf3+ 62.hxg3 Rg6 63.a5 Ra6 64.Kf3 g4 would now be deadly. 64...Rf6+? [64...Ke5 is a better chance. 65.g4 Kd4] 65.Kg4+- Rg6+ 66.Kh4 Ra6 67.Kh5 [67.g4 Kd3 68.Ra3+ Ke4 69.Rb3] 67...Ke4? [67...Ke3 68.Ra3+ Ke4] 68.Ra3 Kd4 [68...Ke5 69.Ra4 Kd5] 69.Ra4+ [69.Rb3 Rxa5+ 70.Kxh6] 69...Ke5? [69...Kd3 70.g4 Ke3] 70.g4 Kd5 71.Rf4 Ke5 72.Rf8 Ke4 73.Rf5 Ke3 74.Kh4 Ke4 75.Kg3 Ke3 76.Rd5 Ke4 77.Rb5 Ke3 78.Rb6 Rxa5 79.Rxh6 White is clearly winning. 79...Ke4 80.Kh4 Ra8 81.g5 Kf5 82.Rf6+ Ke5 83.Kh5 Hoping for Kh6. 83...Rh8+ 84.Kg6 Weighted Error Value: White=0.23 (precise) /Black=0.25 (precise). Loses game: --- Black=3 Missed win: White=1 --- Mistake: White=7

Black=8 Inaccurate: White=1
Black=8 OK: White=22 Black=25
Best: White=4 Black=6 Strong:
White=3 Black=2 1-0

2

Root,D. (2463)
Benjamin,J. (2490)

1.d4 Nf6 2.c4 e6 3.Nf3 d5 4.Nc3 a6 5.cxd5 exd5 6.Bg5 D37: Queen's Gambit Declined: 5 Bf4. 6...Be6 7.e3 Nbd7 8.Bd3 White is slightly better. 8...Bd6 9.0-0 c6 10.Bh4 h6 11.Bc2N [Predecessor: 11.Kh1 0-0 12.Nd2 Be7 13.f4 Nb6 14.Bxf6 Bxf6 15.Qh5 c5 16.Nf3 cxd4 17.exd4 1-0 Riazantsev,A (2626)-Malakhov,V (2650) RUS-chT 30th Sochi 2023 (9.5)] 11...Qc7 12.Bg3 0-0 [12...Bxg3= 13.hxg3 0-0] 13.Qd3 [13.Bxd6 Qxd6 14.h3] 13...Rfe8 14.Nh4 [14.Bxd6 Qxd6 15.h3] 14...Nf8 [14...Bxg3 is more appropriate. 15.fxf3 b5] 15.Rae1 Rad8 16.Nf5 [16.Bxd6= should be considered. 16...Qxd6 17.Nf3] 16...Bxf5! 17.Qxf5 Bxg3 18.hxg3 Ne6 19.f4 [19.Ne2] 19...c5 20.Rd1 cxd4 21.exd4 Qc4 22.Qd3 b5 23.a3 [23.Rfe1 might be stronger.] 23...Qxd3 [Black should play 23...Rb8] 24.Rxd3 Ne4 [24...Rd6] 25.Bb3 Nxc3 26.bxc3 Nc7 27.Kf2 Kf8 28.Re3 Rxe3 29.Kxe3= Endgame. KRB-KRN 29...Rd6 30.Rh1 Ke7 31.Rh5 Re6+ 32.Re5 aiming for f5. 32...f6 Pin 33.Rxe6+ Kxe6 KB-KN 34.g4 g5 35.g3 [35.f5+= Kd7 36.Kf2] 35...Kd6 [35...Na8! deserves consideration.] 36.a4 bxa4 37.Bxa4 Na8 38.Bd1 Nb6 39.Be2 a5 White should prevent ...a4. 40.Kd2 Kc6 41.Kc2 Nc8 42.Kb3 Nd6 43.fxf5 hxg5 44.Bf3? [44.Ka4= and White has nothing to worry.] 44...Ne4+ 45.Kc2 Prevents Nd2. 45...Kd6 [45...Nxg3 46.c4] 46.c4 Nxg3 [46...a4?! 47.Kb2=] 47.cxd5 [47.Bxd5? too greedy. 47...Ne2 48.Kb3 Nxd4+ 49.Ka4 Nc6+; 47.c5+ Kc6 48.Bd1] 47...Nf1 48.Kd3? [48.Kb2] 48...a4 49.Kc3 Nh2 50.Bd1 a3 [50...Kxd5? 51.Bxa4 Nxg4 52.Bd7+] 51.Kb3 Kxd5 52.Kxa3 Kxd4 53.Kb3 Kd3

Strongly threatening ...Kd2.
54.Bc2+ Ke3 55.Bf5 Kf4 56.Kc3 Nxcg4 57.Bc8 Ne3 58.Bb7 f5 59.Kd3 g4 60.Ke2 Nc4 And now ...Kg5 would win. **61.Kf2 Kg5 62.Kg3 f4+ 63.Kg2 Ne5** (...Kh5) **64.Bc8 Kh4 65.Bb7 Nd3** [65...f3+ 66.Kg1 g3 67.Be4 Kh3 68.Bh7 Ng4 69.Be4 f2+ 70.Kf1 Nh2+ 71.Ke2 f1Q+ (71...f1B+ 72.Ke3+-) 72.Ke3 Qc4 73.Bf5+ Ng4+ 74.Kd2 g2 75.Be6 Qxe6 (75...g1Q leads to mate. 76.Bxc4 Qd4+ 77.Bd3 Ne5 78.Ke2 Qxd3+ 79.Ke1 Qc2 80.Kf1 Qd1+ 81.Kf2 Ng4#) 76.Kd3 g1Q (76...g1R 77.Kc3 Qe3+ 78.Kc4 Rc1+ 79.Kb4 Qb6+ 80.Ka4 Ra1#) 77.Kc3 Qge3+ 78.Kb2 Q6b3+ 79.Ka1 Qg1#] **66.Be4 f3+ 67.Kf1 Nc5** Weighted Error Value: White=1.10/Black=0.37. Loses game: White=2 --- Mistake: White=7 Black=5 Inaccurate: White=5 Black=3 OK: White=10 Black=13 Best: White=2 Black=2 Strong: --- Black=1 [67...Nf4 68.Kf2 Nh3+ 69.Ke3 Ng5 70.Bb7 g3 71.Bd5 Kg4 (71...g2 is a self mate. 72.Kf2 Kh3 73.Bb7 Kh2 74.Ke3 g1Q+ 75.Kf4 Qc1+ 76.Kg4 f2 77.Ba6 Qa1 78.Kxg5 Qxa6 79.Kf5 f1Q+ 80.Ke5 Qa5+ 81.Ke6 Qc7 82.Kd5 Qfc4#) 72.Bc4 g2 73.Kd4 g1Q+ (73...g1B+? 74.Ke5+-) 74.Kd5 Qd1+ 75.Kc6 f2 76.Kb5 f1R 77.Bxf1 Qxf1+ 78.Kc6 Ne6 79.Kd6 Kf5 80.Kd7 Qc4 81.Ke7 Qc7+ 82.Ke8 Qd8+ 83.Kf7 Qf8#] **0-1**

3

Novikov,I. (2509)

Root,D. (2463)

1.d4 Nf6 2.c4 g6 3.Nc3 Bg7 4.e4 d6 5.Nge2 0-0 6.Ng3 h5 7.Be2 E70: King's Indian: Miscellaneous lines with 4 e4, including 5 Nge2 and 5 Bd3 0-0 6 Nge2. **7...a5** is more profitable than 7...h4 at the moment. **8.h3 a4N** [Predecessor: 8...Nc6 9.d5 h4 10.Nf1 Ne5 11.Bg5 c6 12.Ne3 a4 13.a3 cxd5 14.cxd5 b5 1-0 Caruana,F (2764)-Chigaev,M (2617) Titled Tuesday intern op 25th Apr Early Chess.com INT blitz 2023 (9)] **9.Rb1** White has an edge.

[9.Nxa4 h4 10.Nf1 Nxe4] **9...e5 10.d5** [10.Nxa4 exd4 11.Bd3 Nc6+-] **10...Nbd7 11.Bg5** [11.Nxa4 h4 12.Nf1 Nxe4] **11...Nc5 12.Bxh5 Qd7** Repels Bg4 [12...gxh5 13.Nxh5 Ncd7 (13...Ncxe4? 14.Nxe4 Nxe4 15.Bxd8+-)] **13.Bf3 Nh7 14.Be3 b6 15.h4! f5 16.Bxc5 bxc5 17.h5 Qf7** [17...f4] **18.hxg6+-** [18.Nxa4?! Ng5] **18...Qxg6 19.exf5** [19.Nxa4 Ng5] **19...Bxf5 20.Be4** [20.Nxf5+- Hoping for Ne7+. 20...Qxf5 21.Qe2 (21.Nxa4? e4+-)] **20...Bxe4 21.Ncxe4 Rf4 22.Qe2** [22.f3] **22...Rg4= 23.Kf1** [23.Rd1!= keeps the balance.] **23...Rf8! 24.Rh3** And now Re1 would win. **24...Nf6 25.Nc3 Nxd5? 26.cxd5 Rxc3 27.Rxc3 Qxc3 28.Kg1!** White has good play. **28...Qg6** Black is on the road to losing. [28...Qh4] **29.Ne4 Rf4** [29...Bh6] **30.Re1!+- Rh4 31.g3 Rh8 32.Kg2 Qh6** [32...Kf7] **33.Qg4 Qh2+ 34.Kf3 Rh6** Dodges Nf6+ [34...Qh3 might work better. 35.Qxh3 Rxh3] **35.Qc8+ Bf8 36.Qxc7 Qh5+ 37.Ke3** White is much more active. **37...Rg6** [37...Qf5 was called for. 38.Qc6 Qf7] **38.Qc8 a3 39.bxa3 Kf7 40.Qd7+ Kg8 41.Qe8 Kg7** Prevents Nf6. [41...Rxc3+ 42.fxc3 Qxe8 43.Nf6+ Kh8 44.Nxe8] **42.f3** Strongly threatening Rb1. **42...Qh6+** [42...c4 43.Rb1 Qh6+ 44.Ke2 Kg8] **43.Kd3 Qh5 44.g4 Qh3 45.Qd7+ Kg8 46.Qf5 Rh6 47.Ng5** White threatens Qf7+ and mate. **47...e4+ 48.Kxe4** An entertaining game by Novikov. Weighted Error Value: White=0.14 (very precise) /Black=0.71. Mistake: White=3 Black=9 Inaccurate: White=2 Black=4 OK: White=20 Black=14 Best: White=3 Black=3 Strong: White=3 Black=1 **1-0**

4

Root,D. (2463)

Akopian,V. (2583)

1.d4 d5 2.c4 c6 3.Nc3 Nf6 4.e3 e6 5.Nf3 Nbd7 6.Qc2 b6 7.Bd3 Bb7 8.0-0 D45: Semi-Slav: 5 e3. **8...dxc4 9.Bxc4 c5 10.Ne5** [10.Rd1!] **10...Bd6** [10...a6!]

11.Nxd7N [Predecessor: 11.f4 cxd4 12.exd4 0-0 13.Be3 Rc8 14.Qe2 Qe7 15.Rad1 Bb4 16.f5 Bxc3 17.bxc3 0-1 Yang,K (2481)-Yoo,C (2550) Chess.com Rapid Wk23 Swiss Chess.com INT 2022 (1)] **11...Nxd7 12.Rd1 cxd4 13.Rxd4** [13.Nb5! Qe7 14.Nxd6+ (14.Nxd4 0-0; 14.Rxd4 Be5) 14...Qxd6 15.Rxd4] **13...Be5** [13...Qg5?! 14.Ne4 (14.Rxd6? Qxg2#; 14.f4 Qe7) 14...Bxe4 (14...Bxh2+? 15.Kxh2 Qe5+ 16.Kg1+-) 15.Qxe4] **14.Nb5 0-0! 15.Rd1 Rc8** ...Bxh2+! would now be deadly. **16.Qe2** [16.e4] **16...Bxh2+!** Decoy **17.Kxh2 Qh4+→** Black goes for the king. [17...Qg5? 18.e4 (18.Rxd7? Qxg2#) 18...Qh4+ 19.Kg1+-] **18.Kg1 Rxc4 19.f3** [19.Rxd7? Bxg2 20.f3 (20.Kxg2? Rg4+-)] **20...Bxf3 21.Qxf3 Rg4+ 22.Kf1 Rg3+** **19...Ba6 20.Na3** [20.b3 Rb4 21.a4] **20...Rxc1!+-** Discovered Attack **21.Qxa6 Nc5** [Black should try 21...Rxa1+ 22.Rxa1 Ne5] **22.Qxa7** [22.Qe2 Rxa1 23.Rxa1] **22...Rxa1 23.Rxa1 Qb4 24.Rb1 Nd3! 25.Qc7 Qd2** [25...Nxb2 26.Qe5 Qxa3 27.Rxb2] **26.e4** [26.Qc2 Qxe3+ 27.Kf1] **26...Nxb2?** [Weaker is 26...Nf4 27.Qc2 Rd8 (27...Ne2+ 28.Kf2) 28.Kf1; 26...Qf2++ has better winning chances. 27.Kh1 f5 (27...Nxb2 28.Qc2; 27...Ne1 28.Qh2) 28.exf5 Ne1 29.Rxe1 Qxe1+ 30.Kh2 Qh4+ (30...exf5? 31.Qc4+ Kh8 32.Qf4+-; 30...Rxf5? 31.Qb8+ Kf7 32.Qc7+ Kf6 33.Qc3+ Qxc3 34.bxc3+-) 31.Kg1 Qd4+ (31...exf5? 32.Qc4+ Qxc4 33.Nxc4+-; 31...Rxf5? 32.Qc8+ Kf7 33.Qd7+ Qe7 34.Qxe7+ Kxe7 35.Nc4+-; 31...Rd8? 32.Qc1+-) 32.Kh2 Rxf5 33.Qb8+ Kf7 (33...Rf8? 34.Qc7+-) 34.Qc7+ Kf6] **27.Qc2 Qxc2 28.Nxc2** Endgame. KRN-KRN **28...Nc4 29.Rb4 Rc8 30.Nd4 g5 31.a4 Kg7 32.Nb3** [32.Ne2] **32...Kf6 33.Rb5** [33.g3] **33...h5+-** **34.a5 bxa5 35.Nxa5 Ne5 36.Rb2?** [36.Nb3 was worth a try.] **36...g4** Hoping for ...Rc1+. **37.fxc4 Rc1+ 38.Kh2 Nxc4+** [38...hxg4? 39.Nb7+-] **39.Kg3 Kg5 40.Rb3** Inhibits

Rc3+. **40...h4+** **41.Kf3 Rc2 42.e5 Kf5** Superbly played by Akopian! Weighted Error Value: White=0.66/ Black=0.15 (very precise). Missed win: --- Black=1 Mistake: White=10 Black=1 Inaccurate: White=1 Black=2 OK: White=8 Black=13 Best: White=1 Black=5 Strong: --- Black=2 Brilliant: --- Black=1 **0-1**



WangJ. (2517)
LiangJ. (2412)

5

1.d4 d5 2.c4 e6 3.Nf3 Nf6 4.Nc3 c6 5.Bg5 dxc4 6.e4 b5 7.e5 h6 8.Bh4 g5 9.Nxg5 hxg5 10.Bxg5 Be7 11.exf6 Bxf6 12.Bxf6 Qxf6 13.g3 Na6 14.Bg2 Bb7 15.a4 Qe7 D44: Semi-Slav: Botvinnik System. [15...0-0-0!= remains equal.] **16.Qf3** [Better is 16.0-0] **16...b4 17.Ne2 Rc1** is the strong threat. **17...Rb8** [17...0-0-0!=] **18.Qf4** [White should try 18.0-0] **18...c5** [18...Nc7] **19.Bxb7 Qxb7 20.0-0!?N** dxc5 would now be deadly. An interesting novelty. [Predecessor: 20.f3 Rd8 21.Rc1 Qd5 22.Rd1 Qc6 23.Qf6 Rg8 24.Kf2 Nc7 25.Qe5 Nd5 26.Rc1 cxd4 27.Nxd4 0-1 Maidana Guerra,V (1600)-Koelemij,S (1982) IECG CP.2002.P.00007 email IECG email] **20...Qd5** White now steadily converts the win. **21.h4 Rd8** [21...Qf5] **22.Rad1!+- Ke7 23.Rfe1** [23.dxc5+- Qxc5 24.Rc1] **23...Qf5** [23...Rhg8 24.Qe3 Qf5] **24.Qxf5 exf5 25.Rc1! Kf6 26.Rxc4 Rhe8 27.Kf1** [27.dxc5?! Rd2] **27...Re4 28.Rec1** [28.f3?! Re3] **28...Kc7** [28...b3 29.f3 (29.dxc5 Rxc4 30.Rxc4 Rd1+ 31.Kg2 Rd2) 29...Re3] **29.f3** [29.dxc5 Rd1+ 30.Rxd1 Rxc4 31.c6 (31.Rd7 Nxc5 32.Rxa7 Ne4+-)] **29...Re3 30.Kf2** [Don't do 30.dxc5?! Rd2 31.Nd4 Red3] **30...Rd3** [30...cxd4 31.Nxd4 Re5] **31.dxc5** Threatens to win with c6. **31...Rd2 32.R4c2 b3 33.Rxd2 Rxd2** Endgame. KRn-KRn

34.c6 Nc7 35.Ke3 Rxb2 36.Nd4 Ra2 37.Nxb3 [Weaker is 37.Nxf5+ Kf6] **37...Rxa4 38.Nd4 Ra5 39.Rb1 Kf6** [39...f4+ was called for. 40.gxf4 (40.Kxf4 Nd5+ 41.Kg5 Ne7+ 42.Kf4 Nd5+ 43.Kg5 Ne7+ 44.Rb5 Rxb5+ 45.Nxb5 Nxc6) 40...Nd5+ 41.Kf2 Ra2+ 42.Kg3 Rd2] **40.Kd3** [40.Rb7 Nd5+ 41.Kd2] **40...Ke5?** [40...Rc5 was necessary. 41.g4 Nd5 42.Nxf5 (42.gxf5 Ke5) 42...Rxc6] **41.h5 Ra3+ 42.Rb3 Ra1 43.Nb5 Nd5 44.h6 Kf6 45.Kd4 Ne7 46.c7 Kg6 47.Re3 Rd1+ 48.Kc5 Rc1+ 49.Rc3 Re1 50.Nxa7 Kxh6 51.c8Q** [Not 51.c8B Ra1] **51...Nxc8 52.Nxc8 KRn-KR 52...Kg5 53.Nd6 Rg1 54.Nxf7+ Kf6 55.Nd8 Rxc3 56.Kd4 Rg1 57.Ke3 Ra1 58.Rc6+ Ke7 59.Nb7 Ra4 60.Rb6 Kf7 61.Kf2 Kg7 62.Kg3 Kf7 63.Nd6+ Kf6 64.Rb5 Ke6 65.Nxf5 Kf6 66.Ne3 Ra3 67.Ng4+ Kg6 68.Rb6+ Kg5 69.Nf2 Kf5 70.Rb5+ Ke6 71.Ne4** Strongly threatening Kf4. **71...Ra8 72.Kf4 Rf8+ 73.Ke3 Ra8 74.Rb6+ Kf7 75.Kf4 Ra5 76.Rb5! Ra3** [76...Ra1 77.Ke5] **77.Ke5** Black must now prevent f4. **77...Ra6 78.f4** Intending f5 and mate. **78...Ke7 79.f5 Ra8 80.Rb7+ Kf8 81.Ng5 Ra5+ 82.Kf6 Ra6+ 83.Ne6+ Kg8 84.Kg6 Ra8 85.f6** Weighted Error Value: White=0.28 (precise) / Black=0.55. Mistake: White=5 Black=8 OK: White=17 Black=10 Best: White=2 Black=1 Strong: White=2 --- **1-0**

6

Hardaway,B. (2459)
WangJ. (2517)

1.e4 e5 2.Nf3 Nc6 3.Bc4 Bc5 4.d3 Nf6 5.Nc3 h6 6.0-0 d6 7.Na4 Bb6 C50: Hungarian Defence and Giuoco Pianissimo. **8.a3 0-0 9.h3 Re8!** The position is equal. is now more promising than 9...Be6. **10.b4 Be6** [10...Ne7 feels hotter. 11.Nh4 Nc6 12.Bd2 d5] **11.Bxe6 Rxe6 12.Bb2 Nd7N** [Predecessor: 12...Ne7 13.Nh4 c6 14.Nxb6 Qxb6 15.c4 Ng6 16.Nxg6 fxg6 17.c5 dxc5 18.Qb3 Rae8 19.Bxe5 ½-½ Tanen-

baum,Z (2260)-Savanovic,A (2361) New York 1000 GM Spring IM-C 2024 (4)] **13.g3 a6 14.Nxb6 Nxb6 15.c4 Qd7 16.Nh4 Ree8 17.Kh2 f6 18.f4 Nd8 19.Rf2 Ne6 20.Qg4 Rad8** [Black should try 20...a5] **21.Raf1 Na4 22.Bc1** And now fxe5 would win. **22...Nf8** [22...Nd4] **23.Nf5+- Kh8 24.Qh5** Nxb6! would now be deadly. **24...Re6?** [24...Nh7 was worth a try. 25.g4 exf4] **25.fxe5 dxe5 26.Nxh6? Qe8** [26...gxh6 27.Rxf6 Rxf6 28.Rxf6] **27.Nf7+?** [27.Qg4+-] **27...Kg8 28.Qh8+! Kxf7 29.Bh6!** Deflection **29...Ke7!** [29...gxh6? 30.Rxf6+ Ke7 (30...Rxf6 31.Rxf6+ Ke7 32.Qg7+ Skewer) 31.Qg7+ Kd6 32.Rxf8+-] **30.Qxg7+** [30.Bxg7= Nd7 31.Qh7] **30...Qf7** aiming for ...Qxg7! **31.Qg4 Nd7** Repels d4 [But not 31...Rxd3?! 32.Rxf6 Rxf6 33.Rxf6 Qxf6 34.Bg5=] **32.Be3 Rg8** [Black should play 32...Rh8! 33.Qe2 Qh5 (33...Qh7 34.h4) 34.Qxh5 Rxh5] **33.Qd1! Nab6 34.c5 Nc8 35.Rf5** [Better is 35.Qb3] **35...Ke8** [35...Kd8 36.Qb3 Qg6] **36.Kd4?** [36.a4!] **36...exd4+ 37.Bxd4 Ne7** [Less strong is 37...Rxe4 38.Bxf6 Ne7 39.Bxe7 Qxe7 40.Qd5 Re2+ 41.R5f2 Rxf2+ 42.Rxf2] **38.R5f4 Nc6 39.Bc3 Nce5 40.Qd5 c6 41.Qa2 Re7 42.Qe2** [42.Qxf7+ is a better defense. 42...Kxf7 43.Bxe5 Rxe5 44.Rd1] **42...Qg6 43.Be1 Rh7** Black is clearly winning. **44.Qd2** [44.h4] **44...Ng4+** Deflection **45.Kg1 Rxh3 46.Qd6 Qh7 47.Qe6+ Kd8** (...Rh1+) **48.Rxg4 Rh1+ 49.Kf2 Rxf1+ 50.Kxf1 Qh3+** Quite a comeback for Black. Weighted Error Value: White=0.76/Black=0.33. Loses game: White=1 --- Missed win: White=1 --- Mistake: White=5 Black=5 Inaccurate: White=4 Black=7 OK: White=14 Black=9 Best: --- Black=3 Strong: White=1 Black=1 Brilliant: White=1 --- **0-1**

7

WangJ. (2517)
Ladan,N. (2211)

1.e4 e5 2.Nf3 Nc6 3.Bb5 a6 4.Ba4 d6 5.0-0 Bg4 6.h3 h5 7.Bxc6+

bxc6 8.d4 C72: Ruy Lopez: Deferred Steinitz: 5 0-0. [8.hxg4 hxg4 9.Re1 gxf3 10.Qxf3 Qh4] **8...Bxf3 9.Qxf3 exd4 10.Rd1** White is better. **10...Qf6 11.Qb3** Threatens to win with Qb7. White has strong compensation. **11...Ne7 12.Qb7 Rc8** [12...Rd8!=] **13.Nd2! g5N** [Black should play 13...c5!; Predecessor: 13...Qe5 14.Qxa6 Qb5 15.Qa3 Ng6 16.Nf3 c5 17.c3 d3 18.Qb3 Qxb3 19.axb3 Rb8 1-0 Munguntuul,B (2433)-Leontiev,A (2281) Chigorin Memorial 22nd St Petersburg 2014 (5)] **14.Nf3!** Discovered Attack, Double Attack [14.Qxa6?! g4=] **14...Rg8** [14...Bh6 was necessary.] **15.Nxd4** [15.Qxa6 g4 16.hxg4 (16.Nxd4 gxh3 17.g3 h4) 16...hxg4 17.Nxd4 Kd7=; 15.Re1+- and White stays clearly on top.] **15...Kd7 16.Nf3** Dodges Qe5. White is much more active. [16.Qxa6 Bg7 17.Qe2] **16...g4 17.e5↑** Deflection. Black is under strong pressure. **17...Qf5 18.exd6** [18.Rxd6+ Ke8 19.Rf6 Qxc2=] **18...gxf3 19.dxe7+ Kxe7 20.g3** Rd3 would now be deadly. Some like it hot [20.Qxa6 Qxh3 (20...Rxd6? 21.Kf1+) 21.Qa3+ Ke8 22.Qe3+ Be7; 20.Qxc6?! Rxd6+ 21.Kf1 Bg7= (21...Qb5+ 22.Qxb5 axb5 23.Rd3); 20.Qb4+? Ke8 21.Re1+ Kd7 22.Rd1+ Bd6+] **20...Kf6?** [20...Qxh3 21.Qb4+ (21.Qxa6? Qg2#) 21...Kf6 22.Qc3+ Kg6 23.Qxf3 (23.Qxc6+ Bd6) 23...Kh7] **21.Qxc6+-** [21.Qxa6 Rxd6+ 22.Qxf3 Bc5+ 23.Kh2 Re8] **21...Bd6 22.Rd3** [22.Qxa6 Qxh3 23.Rxd6+ Kg7 (23...Ke7 24.Rd7+ Decoy 24...Kxd7 25.Qd3+ Ke8 26.Qe4+ Qe6 27.Qxf3)] **22...Qxh3 23.Rxf3+ Ke7 24.Bh6** Black must now prevent Re1+. **24...Rce8** [24...Bxg3 25.Qf6+ Deflection, Zwischenzug, Double Attack (25.Rxd6 Rxd6+ 26.fxd6 Qxd6+ 27.Kf1 Qh3+ 28.Qg2 Qf5+ 29.Qf2 Qh3+ 30.Ke2 Qg4+ 31.Kd2 Qb4+ 32.Kc1 Qd6+-) 25...Kd7 26.Qxf7+ (26.fxd6 Rxd6+ 27.Rxd6 Qxd6+ 28.Kf1 Qh3+ 29.Kf2 Qh2+ 30.Kf3 Qh3+ 31.Ke4 Qg2+ 32.Kd4 c5+ 33.Kc3 Qh3+ 34.Kd2 Qg2+ 35.Kc3

Qh3+ 36.Kd2 Qg2+ 37.Kc3+-) 26...Kc6 27.Rc3+ Pin (27.fxd3 Rxd3+ 28.Rxd3 Qxd3+ 29.Kf1 Qh3+ 30.Kf2 Qh2+ 31.Kf3 Qh3+ 32.Ke4 Qg2+ 33.Ke3 Qxc2+-) 27...Kb7 28.Qb3+ (28.fxd3 Rxd3+ 29.Rxd3 Qxd3+ 30.Kf1 Qh3+ 31.Kg1 Qg3+ 32.Kf1 Qh3+ 33.Kf2 Qh2+ 34.Kf3 Qh3+ 35.Ke4 Qg2+ 36.Ke3 Qxc2+-; 28.Qf3+ c6+-) 28...Ka8 29.Rxd3 (29.fxd3 h4+-) 29...Rxd3+ 30.fxd3 h4] **25.Re1+ Kd8 26.Rxe8+** Deflection **26...Rxe8 27.Bg5+** An entertaining game by Wang. Weighted Error Value: White=0.13 (very precise) / Black=0.91. Loses game: --- Black=2 Mistake: White=2 Black=3 Inaccurate: White=2 Black=3 OK: White=3 Black=4 Best: White=5 Black=5 Strong: White=2 --- [27.Rxf7? Re1#] 1-0

8

Wang,Justin (2517)
Wang,Jason (2425)

1.d4 d5 2.c4 e6 3.Nf3 Nf6 4.g3 Bd6 5.Bg2 h6 6.Qc2 E01: Catalan: Early deviations. **6...0-0 7.0-0** [7.c5!? Be7 8.0-0=] **7...b6 8.Nc3** White is slightly better. **8...Bb7 9.Nb5** [9.b3] **9...dxc4= 10.Nxd6N** [Predecessor: 10.Qxc4 Bd5 11.Qc2 Be4 12.Qd1 Nc6 13.Nc3 Bd5 14.Nxd5 exd5 15.Bf4 Re8 16.Rc1 ½-½ Marquez Ruiz,A (2265)-Rey Malde,H (2171) Madrid op 2024 (4)] **10...cxd6 11.Qxc4 Bd5 12.Qa4 Nc6 13.Be3** [13.Nh4 might be stronger. 13...Rc8 14.Be3] **13...Qd7** [13...b5!? 14.Qd1 (14.Qxb5 Rb8) 14...Ne7] **14.Rfc1 Qb7 15.Ne1 Rac8 16.f3 b5 17.Qd1 e5! 18.dxe5 dxe5 19.Nd3 Rfe8** [19...Rfd8] **20.Kh1** [20.a4!=] **20...Rcd8!** Black continues to play with concentration. **21.Qg1 Nd4 22.Qf2** [22.Qf1] **22...Nf5** Black has more active pieces. **23.Bc5 e4 24.Nb4 exf3 25.exf3 Bc4 26.Re1** Prevents Re2 [26.Bxa7? loses. 26...Re2 27.Qb6 Qa8+-] **26...a5 27.Nc2 Rxe1+ 28.Rxe1** White is weak on the light squares **28...Bxa2** [Black should play

28...Nd7 29.b3 Nxc5 30.Qxc5 Be6] **29.Bb6** [29.g4 Nd6 30.Bb6] **29...Ra8!+- 30.Ra1** [30.Re5 is a better defense. 30...Nd6 31.Bc5] **30...Nd7 31.f4** [31.Rxa2 Qxb6 (31...Nxb6 32.f4) 32.Kg1] **31...Bd5** [Inferior is 31...Qxb6 32.Qxb6 Nxb6 33.Bxa8] **32.Bxa5 Nc5** Deflection. A dynamic duo of knights. **33.Bc3?** [33.Ra3] **33...Rxa1+** Black is clearly winning. **34.Nxa1 b4 35.Bd2 Ne4** Prevents h4 **36.Bxe4 Bxe4+ 37.Kg1 Qd5** Prevents Nb3. aiming for ...Nd4. **38.Bxb4 Qd1+ 39.Qf1 Qd4+ 40.Qf2 Qxb4** An entertaining game by Wang. Weighted Error Value: White=0.54/ Black=0.14 (very precise). Mistake: White=8 Black=2 Inaccurate: White=1 Black=2 OK: White=11 Black=11 Best: White=1 Black=2 Strong: --- Black=3 0-1

9

Hong,A. (2570)
Wang,J. (2517)

1.Nf3 d5 2.g3 g6 3.Bg2 Bg7 4.d4 Nf6 5.0-0 0-0 6.c4 c6 7.Qb3 Qb6 8.Nc3 dxc4 9.Qxc4 Bf5 D78: Fianchetto Grünfeld: 6 0-0 c6. **10.Ng5 h6** [10...Qa6 should be considered. 11.Qb3 Bc8] **11.e4! hxg5** White is better. **12.exf5 gxf5 13.d5** [13.Bxg5 e6 14.Rfd1] **13...g4N** [Predecessor: 13...Ng4 14.Bxg5 Qxb2 15.Rac1 Ne5 16.Qf4 Ng6 17.Qe3 cxd5 18.Nxd5 Nc6 19.Rb1 Qxa2 20.Rxb7 1-0 Vladimirov,Y (2627)-Mankeyev,R (2402) Pavlodar op 2007 (11)] **14.Re1! a5 15.Be3** [15.Rxe7 Qb4 16.Qe2 Nxd5 17.Bxd5 (17.Nxd5 cxd5 18.a3 Qb3=) 17...cxd5 18.Nxd5 Qd4] **15...Qb4** [15...Qxb2? 16.Rab1 b5 17.Qd3+- (17.Rxb2 bxc4 18.dxc6 Ne4)] **16.Qd3 e6** [16...Qxb2? 17.Rab1 Qa3 18.Bd4 (18.Rxb7 Nxd5 19.Rb3 Qd6) 18...cxd5 19.Rb3+-] **17.dxe6 fxe6 18.Bd2** [18.Bf4! Nd5 (18...Qxb2? 19.Rab1+ - Skewer) 19.Nxd5 exd5 20.Bxd5+ cxd5 21.Qxd5+ Kh8 22.Bd6] **18...Qe7** [18...Qxb2? 19.Rab1 Qa3 20.Rxb7+- (20.Rxe6 Rf7+-)] **19.Ne2** [19.Qxf5! exf5 20.Rxe7]

19...Qd7 20.Qc2 e5 [20...Re8=]
 21.Rad1 [21.b4!] 21...Nd5= 22.Nc3
 Nb4 [22...e4!?] 23.Qa4 [23.Qb1!=
 remains equal.] 23...Qf7↑ ...Nd7
 would now be deadly. Black is really
 pushing. 24.Bg5 [24.Be3]
 24...b5 [24...Nd7+- ...Nc5 is the
 strong threat. 25.Qb3 Qxb3
 26.axb3 Nc2] 25.Qb3 Qxb3
 26.axb3 Nc2 27.Re2 Nd4 28.Re3
 [28.Red2] 28...e4+- Strongly
 threatening ...Na6! [28...Nxb3
 29.Nxb5 Nd4 30.Nxd4 exd4
 31.Re7] 29.Be7 [29.h3 was neces-
 sary. 29...gxh3 (29...Nxb3
 30.hxg4 Bd4 31.gxf5) 30.Bxh3]
 29...Re8 30.Bc5 Ne6 Excellent
 horsemanship. [30...Nxb3 31.Nxe4
 fxe4 (31...Bxb2? 32.Rxb3 fxe4
 33.Rxb2+-; 31...Nxc5 32.Nxc5 Kf7
 33.Rxe8=) 32.Rxb3+-] 31.Bd6 Nd4?
 [31...Nd7+- aiming for ...Rad8.
 32.h3 Nf6] 32.Bc5!= This costs
 White the game. 32...Nxb3
 33.Nxe4 fxe4 [33...Bxb2? 34.Rxb3
 fxe4 35.Rxb2+-; 33...Nxc5
 34.Nxc5 Kf7 (34...Rxe3 35.Rd8+
 Kf7 36.fxe3=) 35.Rxe8 Kxe8
 36.Ne6=] 34.Rxb3 Na6 35.Bb6 a4
 36.Re3 Rab8 [36...Bxb2 37.Rxe4
 Rxe4 38.Bxe4+-] 37.Ba5 Bxb2
 38.Bxe4 [38.Rxe4 was called for.
 38...Rxe4 39.Bxe4] 38...a3+-
 39.Bxc6 Rxe3 40.fxe3 b4 41.Rd6
 Nc5 [Not 41...b3 42.Bd5+ Kg7
 43.Rxa6] 42.Bd5+ [42.Bc7 was
 worth a try. 42...Rc8 43.Bd5+ Kh7
 44.Bb6] 42...Kg7 43.Bc7? [43.Bb6
 b3 44.Bxc5] 43...b3! And now ...a2
 would win. 44.Bxb8 a2 45.Rc6
 a1Q+ [45...a1B? is the wrong cap-
 ture. 46.Rxc5 Ba3 47.Rc1+ Kf8
 48.Bxb3+-] 46.Kg2 Qd1! 47.Rc7+
 Kg6 48.Rc6+ Bf6 [But not 48...Kf5?
 49.e4+ Nxe4 50.Be6+ Kg5 51.Bf4+
 Kf6 52.Bxb3+-] 49.Rxc5 Qe2+
 50.Kg1 Qxe3+ 51.Kg2 Qe2+
 52.Kg1 Bd4+ An excellent game by
 Wang. Weighted Error Value:
 White=0.81/Black=0.32. Missed
 win: --- Black=1 Mistake: White=1
 Black=3 Inaccurate: White=1
 Black=6 OK: White=15 Black=14
 Best: --- Black=2 Strong: White=3 ---
 0-1



10 Wang,Justin (2517) Woodward,Andy (2523)

1.d4 Nf6 2.Nf3 g6 3.Nbd2 d5 4.e3
 Bg7 5.b4 a5 6.b5 D02: 1 d4 d5 2
 Nf3 sidelines, including 2...Nf6 3
 g3 and 2...Nf6 3 Bf4. 6...c5!
 7.bxc6 Nxc6 8.Be2 0-0 9.0-0 Bf5
 10.c4 a4 [10...Qb8=] 11.Ba3 Qa5N
 [Predecessor: 11...Re8 12.Rc1 e6
 13.Ne5 h5 14.Nxc6 bxc6 15.cxd5
 exd5 16.Rxc6 Qb8 17.Qc1 Ng4 1-0
 Duran Vega,S (2364)-Barbosa,E
 (2506) American Continental 15th
 Sao Paulo 2019 (9)] 12.Rc1 Rac8
 [12...Rfc8=] 13.cxd5 Qxd5 14.Nc4!
 [14.Qxa4? Ra8 (14...Qxa2? 15.Bc4)
 15.Qd1 Rxa3+-] 14...Nd7 Prevents
 Nb6 [14...Rb8] 15.Nfd2!+- Strongly
 threatening Bf3! [15.Qxa4 b5
 16.Qa6 bxc4 17.Bxc4 Qa5
 18.Qxa5 Nxa5] 15...g5 [15...h5
 might work better.] 16.Qxa4
 [16.Bf3+- Qb5 17.e4] 16...b5
 17.Bf3! Nxd4 [Better is 17...Qxf3
 18.Qxb5 Nxd4 (18...Qg4? 19.h3+-)
 19.exd4 Qd3] 18.exd4 Qxc4
 [18...Qxf3 19.Qxb5 Qd3]
 19.Nxc4+- [19.Qxc4 bxc4 20.Bxe7
 Rfe8 21.Bxg5 c3] 19...bxa4
 20.Bxe7 Bd3 21.Nd6 Discovered
 Attack 21...Rxc1 22.Rxc1 Rb8
 23.Bc6 White is much more active.
 [23.Bxg5 Bxd4 24.Bc6 Ne5]
 23...Nf8 24.Bxa4 Rd1 would now
 be deadly. [24.Bxg5 Ne6 25.Be3
 Nxd4 26.Bxd4 (26.Bxa4? Ne2+
 27.Kh1 Nxc1+-) 26...Bxd4=]
 24...Rb2 25.Bb3 [Resist 25.Bxg5
 Bxd4 26.Be3 Bxe3 27.fxe3 Rxa2]
 25...Bxd4 26.Nxf7 [Don't play
 26.Bxg5 Rxf2 27.Kh1 Ne6; But not
 26.Bxf7+?! Kg7] 26...Kg7 27.Nxg5
 Bxf2+ 28.Kh1 Be3 29.Rd1 Bf5
 [29...Bxg5 30.Bxe3 Be4] 30.h4
 Ng6 31.Bb4 And now Bc3+ would
 win. 31...Rf2 32.Re1 Bxg5
 [32...Bd2 was necessary.] 33.hxg5
 Nf4 34.Bd6 [34.Re8+- Kg6 35.Bc5
 Rf1+ 36.Kh2] 34...Kg6 35.Bxf4

Rxf4 Endgame. KRB-KRB 36.Re5
 Rf2 [36...Rh4+ is a better defense.
 37.Kg1 Bd3] 37.Kh2+- Rb2 38.Rb5
 Black must now prevent Bf7+!
 38...Rd2 39.Kg3 Be4 Inhibits Rd5.
 40.Kf4 Bxg2 41.Ra5 [41.Rc5!+- and
 White stays clearly on top.]
 41...Rd4+ 42.Ke3 Rd7 [Black
 should try 42...Rg4] 43.a4 [White
 should play 43.Bc2+ Kg7 44.Ra6]
 43...Re7+ 44.Kd4 [44.Kd2]
 44...Re4+= 45.Kc3 Hoping for Bc2.
 45...Rg4 46.Ra7 [46.Bg8 feels
 stronger.] 46...Rg3+ [46...Rxg5=
 might be stronger. 47.Bc2+ Kf6]
 47.Kb2 [47.Kb4! should be consid-
 ered.] 47...Rxg5 The position is
 equal. 48.Bc2+ Kf6 49.Rxh7 Ke6
 50.Ka3 Kd6 51.Kb4 Bc6 52.Bb3
 Re5 53.Bc4 Re4 54.Rh6+ Kc7
 55.Kc5 Re5+ 56.Kb4 Re4 57.Rh5
 Bxa4 Decoy 58.Kxa4 Rxc4+ 59.Kb5
 Rc1 60.Rc5+ Rxc5+ 61.Kxc5 Black
 escapes into a draw. Weighted
 Error Value: White=0.19 (very pre-
 cise) /Black=0.23 (precise) . Missed
 win: White=1 --- Mistake: White=6
 Black=11 Inaccurate: White=1
 Black=1 OK: White=24 Black=19
 Best: White=2 Black=9 Strong:
 White=1 --- ½-½



11 Daggupati,B. (2480) Woodward,A. (2523)

1.e4 c5 2.Nf3 d6 3.d4 cxd4
 4.Nxd4 Nf6 5.Nc3 a6 6.f3 e5
 7.Nb3 Be6 8.Be3 h5 9.Nd5 B90:
 Sicilian Najdorf: Unusual White 6th
 moves, 6 Be3 Ng4 and 6 Be3 e5.
 9...Bxd5 10.exd5 Nbd7 11.Qd2
 The position is equal. 11...g6 12.0-0
 Bg7 13.Kb1 b5 13...Rc8 is be-
 coming the main line. 14.Na5 Nb6!
 15.Nc6 Qc7 16.c4 Nxc4
 [16...bxc4= 17.Qa5 Nfxd5 18.Rxd5
 Qxc6 19.Bxb6 (19.Qxb6? Qxd5
 20.Be2 0-0+) 19...0-0] 17.Bxc4
 bxc4 18.Rc1 Qb7!N An interesting
 novelty. [18...e4!=-; Predecessor:
 18...0-0 19.Rxc4 Qd7 20.Rd1 Kh7

21.Qc2 Bh6 22.Bf2 Bg5 23.a4 Rac8 24.b4 Kg7 ½-½ Mazzonna,R (1885) -Normando,M (1769) W-ch WS/O/1392 email ICCF email 2021] 19.Rxc4 Qb5 20.Rhc1 Qxd5 21.Qb4 [21.Rd1= remains equal. 21...Qxd2 (21...Qxc4? 22.Qxd6+)- 22.Bxd2] 21...Qd3+ 22.Ka1 0-0! 23.R4c3 Qe2 24.Qxd6 Loses the game. [24.Qb3 was necessary.] 24...Qxg2+ 25.h4 [25.R1c2 Qh1+ (25...Qxf3 26.Bg5) 26.Rc1 Qxh2 27.Bg5] 25...Rae8 26.Bg5 Re6 27.Qd1 Rfe8 28.R1c2 [28.Nd8 R6e7 (28...Rb6 29.R3c2=) 29.Nc6] 28...Qh3 ...Nh7 would now be deadly. 29.Ra3? [29.Nd8 R6e7 30.Rd3] 29...Nh7 30.Be3 e4 [30...Qxh4? 31.Qf1+-] 31.f4 Qxh4 ...Nf6 is the strong threat. 32.Qg1 Rd6 33.Rxa6 Qf6 And now ...h4 would win. 34.Rb6 [34.a4 keeps fighting.] 34...Nf8 35.Qc1 Ra8 36.Kb1 Qe6 37.a3 Qd7 Prevents Rb7. 38.Ne7+ [38.Rd2 is a better defense. 38...Rxd2 39.Qxd2] 38...Kh7 [38...Qxe7 39.Bc5 Rad8 40.Rxd6 Rxd6] 39.Rxd6 Qxd6 40.Nc6 Qe6 41.Nd4 Qa6 42.Rc4 [42.Ka2] 42...Rb8 43.b4 [43.a4] 43...Nd7 44.Ka2 [44.Nb3 was the only defense.] 44...Qd6 [44...Nb6 45.Rc6 Rd8 (45...Qd3? 46.Rc3+-)] 45.Nb3 [45.f5] 45...Qe6 46.Qc2 [46.Rc7] 46...Nf6 Threatens to win with ...Re8. 47.Bd4 e3 [47...Re8 Strongly threatening ...e3. 48.Nc5 (48.Rc6? Qf5+-) 48...Qf5] 48.Rc6? [48.f5 is tougher. 48...Qxf5 (48...gxf5? 49.Nc5+-) 49.Qxf5 gxf5 50.Bxe3] 48...Qe8 Black is clearly winning. 49.Rc3 [49.Rxf6? is the wrong capture. 49...e2; 49.Nc1 Rd8 (49...Nd5? 50.Bxg7 Kxg7 51.Rc4+-) 50.Rc4 (50.Bxf6? too greedy. 50...Rd2+- Pin)] 49...e2 50.Bf2 e1Q 51.Bxe1 Qxe1 52.Rc7 Qe6 Weighted Error Value: White=0.69/Black=0.46. Mistake: White=14 Black=5 Inaccurate: White=2 Black=2 OK: White=17 Black=19 Best: White=1 --- Strong: -- Black=2 0-1

12 Ladan,N. (2211) Woodward,A. (2523)

1.d4 Nf6 2.Bf4 d6 3.Nc3 Nbd7 4.Nf3 c5 5.d5 Qa5 6.a4 A45: Trompowsky Attack. 6...Ne4 7.Qd3 Ndf6 8.Bd2 White has an edge. 8...Nxd2 9.Nxd2 Qd8 N [Predecessor: 9...g6 10.Qb5+ Qxb5 11.axb5 Bg7 12.Nc4 Bf5 13.Nb6 Rb8 14.Rxa7 Bxc2 15.f3 Nd7 1-0 Jaunooby,A (2117)-Homer,S (1992) Torquay op 49th 2015 (1)] 10.e4 g6 11.Be2 Bg7 12.0-0 0-0 13.Nc4 Nd7 14.Qg3 Black is weak on the light squares 14...Nb6 15.Ne3 a5 16.f4 Bd7 17.f5 Be5 18.Qh3 f6 [18...Bd4= keeps the balance.] 19.Qh6 [19.Ng4!] 19...Qe8 [19...Rf7=] 20.Ng4 aiming for Nxe5. 20...Bd4+ 21.Kh1! Qf7 [21...Bxa4? too greedy. 22.fxg6 Qxg6 23.Nxa4+-; 21...Bxc3 22.bxc3 Kh8 (22...Nxa4 23.Rf3=; 22...Bxa4? 23.Rfb1+-)] 22.Bb5 [22.Nb5!] 22...Rad8 [Black should try 22...gxf5 23.Bxd7 Remove Defender 23...Nxd7 24.Rxf5 (24.exf5 Bxc3 25.bxc3 Qxd5) 24...Bxc3 25.bxc3 Qg6] 23.Ne2 [White should play 23.Bxd7 Rxd7 24.Qh3] 23...Bxb5! 24.axb5 Threatens to win with Nf4. 24...Bxb2 [Better is 24...gxf5! 25.Nxd4 (25.Rxf5 Bxb2 26.Raf1 Kh8=) 25...cxd4 26.Rxf5 Rc8] 25.Rxa5 [25.Qh3! Kh8 26.Rxa5] 25...Be5 [25...gxf5!= 26.Rxf5 Ra8 27.Rxa8 Rxa8] 26.Ra7 Rb8 27.Nf4 [27.Qh3 Black must now prevent Nh6+. 27...Kh8 28.Nh6] 27...Bxf4 28.Qxf4 g5 29.Qd2 Nh6+ would now be deadly. 29...Qe8 30.Qa5 [30.Qe2] 30...Nc8! Black is in control. 31.b6 Qd8 [31...Nxa7 32.bxa7 Ra8] 32.Qb5 Qxb6 33.Qxb6 Nxb6 34.Rb1? Black converts the advantage convincingly. [34.Ne3!] 34...Nc4+- 35.h4 [35.Kg1] was called for. 35...h5 36.Nf2 Kf7 37.hxg5 fxg5 Strongly threatening ...Ne5. 38.Rxb7? [38.g4] 38...Rxb7 39.Rxb7 Endgame. KRN-KRN 39...Ra8 40.Rb3? [40.g4 h4 41.Nh3] 40...Ra2 41.Rc3 Ne5

42.Kh2 Kf6 ...g4 is the strong threat. 43.Kg3 Ra1 44.Nd3 Ra4 45.Nf2 Rd4 46.Kh2 Rd2 47.Kg1 Rd4? [47...g4+- 48.Kf1 h4] 48.Ra3? [48.Kh2!= g4 49.g3] 48...Ng4 Black is clearly winning. 49.Nxg4+ hxg4 KR-KR 50.Ra8 Rxe4 51.Rf8+ Ke5 And now ...g3! would win. 52.Rf7 g3 53.Kf1 Dodges Re1+ 53...Rf4+ 54.Ke1 Rxf5 55.Rxe7+ Kxd5 Weighted Error Value: White=0.55/Black=0.43. Loses game: White=3 -- Missed win: --- Black=1 Mistake: White=8 Black=7 Inaccurate: White=4 Black=2 OK: White=20 Black=17 Best: White=2 Black=2 Strong: White=1 Black=2 0-1

13 Liang,J. (2412) Woodward,A. (2523)

1.e4 c5 2.Nf3 d6 3.d4 cxd4 4.Nxd4 Nf6 5.Nc3 a6 6.h3 e5 7.Nf3 B90: Sicilian Najdorf: Unusual White 6th moves, 6 Be3 Ng4 and 6 Be3 e5. 7...Be7 8.g4 h6 9.Rg1 The position is equal. 9...b5 10.g5 hxg5 11.Nxg5 Bb7 12.Be3 Qc7 [12...Nbd7=] 13.Qd2! Nbd7 14.0-0 0 b4 15.Nd5 Nxd5 16.exd5 Nf6 17.Bg2 [17.Qxb4 Bxd5 (17...Nxd5 18.Qb3) 18.Qb6 Qxb6 19.Bxb6 Kf8] 17...Bc8! 18.Kb1 Strongly threatening f4! 18...Bf5 19.f4 aiming for fxe5. 19...Nd7N Black is now going downhill. [19...Rc8= 20.Rc1 Qb8 21.fxe5 dxe5; Predecessor: 19...exf4 20.Bxf4 0-0 21.Be3 Rfc8 22.Rc1 Rab8 23.Ka1 Bxc2 24.Bd4 b3 25.Be4 Qd8 26.Bxc2 Rxc2 27.Rxc2 bxc2 28.Qxc2 1-0 De Winter,A (2405)-Beerdse,T (2511) Groningen op 59th 2023 (3)] 20.Be4+- [20.Qxb4? Bxc2+ 21.Ka1 Bxd1 22.Rxd1 Qc2+-] 20...Bxe4 21.Nxe4 Qc4 [21...g6] 22.Qg2! b3 is the strong threat. 22...Rc8 23.b3 Qc7 24.fxe5 Nxe5 25.Bd4 Threatens to win with Bxe5! 25...Bf6 [25...Rh5 keeps fighting. 26.Rd2 (26.Qxg7? Qxc2+ 27.Ka1 Qxe4+-) 26...Qd7 27.Qxg7 Qxh3] 26.Rgf1 Rh6 27.Rf2 Nxf6+ would now be deadly. 27...Kf8 28.Qf1 [28.Nxf6 gxf6 29.h4

(29.Rg1 Rg6++)] **28...Rh4?**
 [28...Nd7 was necessary. 29.Nxf6
 (29.Qxa6 Bxd4 30.Rxd4 Nc5)
 29...Nxf6] **29.Nxf6 gxf6 30.Qxa6**
Ke7 31.Qf1 Hoping for Bxe5!
31...Rh7 32.Qe1 [32.Rxf6? perish-
 es. 32...Qxc2+ 33.Ka1 Ra8+] **32...Qb7 33.Qe4 Rch8 34.Rdf1 Rh4**
35.Rf4 Qb5 [35...Qa6 36.Qf5 Rxf4
 37.Rxf4 (37.Qxf4 Rh6++) 37...Rh6
 38.Bxe5 Discovered Attack
 38...dxe5] **36.R1f2 R4h6 37.Bxe5**
 Discovered Attack **37...dxe5**
38.Rxf6! Remove Defender, Decoy
38...Rxf6 39.Qxe5+ Kd7 40.Rxf6
 White mates. **40...Rf8 41.Rd6+ Kc8**
42.Rc6+ Kb7 43.Qe7+ Weighted
 Error Value: White=0.34/
 Black=0.64. Loses game: ---
 Black=1 Mistake: White=1 Black=5
 Inaccurate: White=2 Black=2 OK:
 White=13 Black=9 Best: White=1
 Black=2 Strong: White=2 Black=1
 1-0



14

Li,R. (2182)
 Su, J.Z. (2051)

1.e4 c5 2.d4 cxd4 3.c3 dxc3
4.Nxc3 Nc6 5.Nf3 e6 6.Bc4 Nge7
7.O-O B21: Sicilian: 2 f4 and Morra
 Gambit. **7...Ng6 8.Be3** [8.h4=]
8...Be7 9.Qe2 Black has an edge.
9...O-O 10.Bb3N [Predecessor:
 10.Rfd1 a6 11.Rac1 b5 12.Bb3 d6
 13.a4 b4 14.Na2 a5 15.Rxc6 Bb7
 16.Rc4 ½-½ Unbehnd,M (1551)-
 Hesse,A (1490) GER-ch Net Ama-
 teur Gr-B Vor1 Playchess.com INT
 blitz 2020 (6)] **10...a6 11.Nd4 d6**
12.Rad1 Nxd4 [12...Na5] **13.Bxd4=**
e5 14.Be3 Be6 15.Bd5 Qd7 16.Rd2
Nf4 17.Bxf4 exf4 18.Rfd1 Rad8
19.f3 [19.h3= remains equal.]
19...b5 [Better is 19...Qc7!] **20.Qf2**
Qc7 21.Ne2 Bg5 22.h4 Bh6 23.Nd4
 [23.Rc1 keeps the upper hand.
 23...Qa5 24.Nd4] **23...Bxd5**
24.exd5 g6 Against Nf5 **25.Rc2**
Qb7 [25...Qd7] **26.Rc6** Now White

is beyond hope. [26.Nc6=]
26...Rfe8!++ 27.Nb3 [27.Ne2]
27...Re3 28.Na5 Qa7 29.Kh2 Bf8
30.Rdc1? [30.Rc3 Rde8 31.Nc6]
30...Qd4 31.Rxa6? [31.Nb7 keeps
 fighting. 31...Rb8 (31...Rd7?
 32.Na5++) 32.Nxd6] **31...Qxd5**
32.Nc6 Rde8 ...Re2 would now be
 deadly. **33.Nb4** [33.Rc2 Qh5
 34.Ra3] **33...Qb7?** [33...Qh5
 34.Rd1 Re2] **34.Rcc6?** [34.Rac6
 nothing else works.] **34...R8e5**
 aiming for ...Qe7. **35.Rcb6 Qd7**
 White must now prevent ...Re2.
36.Nc6 Rc5 Hoping for ...Rc1.
37.Ra7 [37.Ra8 Rxc6 38.Rbb8]
37...Qc8 Black is clearly winning.
38.Qd2 Rxc6 39.Qd5 Rc7 [Stronger
 than 39...Rxb6 40.Qxf7+ Kh8
 41.Qxh7#] **40.Ra8 Qe6 41.Qd4**
 [41.Qxe6 fxe6 (41...Rxe6? 42.Rbb8
 --) 42.Rbb8] **41...Rc8 42.Rxc8**
Qxc8 43.Qxf4 Qc5 44.Rb7 Re7
45.Rxe7 Bxe7 Weighted Error Value:
 White=0.74/Black=0.54. Mis-
 take: White=11 Black=4 Inaccurate:
 White=3 Black=4 OK: White=12
 Black=17 Best: --- Black=1 0-1

15

Vidhyarthi,O. (2087)
 Li,R. (2182)

1.Nf3 c5 2.c4 Nc6 3.Nc3 Nf6 4.g3
d6 5.Bg2 g6 6.O-O Bg7 7.d4 cxd4
8.Nxd4 Bd7 9.Nc2 h5 A31: Sym-
 metrical English: 2 Nf3 Nf6 3 d4.
10.h4! Qc8 11.Re1 [11.Bf4]
11...Ne5 The position is equal.
12.b3! Bc6 [12...Nfg4 is more com-
 plex. 13.Nd5 Bc6 14.Bg5 e6]
13.Nd5 Nxd5 14.cxd5 Bd7
15.Bg5N [Predecessor: 15.Bd2 0-0
 ½-½ Todorovic,G (2390)-Prelevic,D
 (2350) Belgrade-chT 2007 (7)]
15...Bh3 16.Rc1 Black must now
 prevent Ne3. **16...Bxg2 17.Kxg2**
 [Wrong is 17.Ne3? Qh3 18.f3 Bxf3
 19.exf3 Qxg3+ 20.Ng2 Nxf3+
 21.Kf1 Nh2+ 22.Kg1 Nf3+ 23.Kf1
 Nxe1 24.Qxe1 Qf3+ 25.Kg1 0-0+
 (25...Qxd5 26.Qxe7#)] **17...Qd7!**
18.Nd4 0-0 19.f3 Rac8 20.Qd2 Kh7
21.Qb4 a6 22.a4 e6 23.dxe6 fxe6
24.Red1 Nf7 25.Be3 d5 [25...e5
 26.Nc2 d5] **26.Qb6= Nd6 27.Bd2?**

[27.f4=] **27...e5 28.Nc2 Nf5**
 [28...Rc6!++ 29.Qg1 d4] **29.Ne1**
 [29.Ne3!] **29...e4++** Hoping
 for ...Bd4. **30.Rxc8 Rxc8 31.Bf4**
d4? [Black should play 31...Qe7!-
 + ...exf3+ is the strong threat.
 32.Qf2 Rc3] **32.Rd2?** [32.fxe4= and
 White has nothing to worry.
 32...Nxh4+ 33.Kf2 (33.Kg1? Qg4-
 +)] **32...Rc1 33.Nc2 d3** Deflection
34.exd3 exf3+ [34...exd3? 35.Ne3-
 +] **35.Kh2 Nd4 36.Ne3 Ne2**
 (...Qh3+!) **37.Nd1 Bd4** Weighted
 Error Value: White=0.90/
 Black=0.19 (very precise). Loses
 game: White=1 --- Missed win: ---
 Black=1 Mistake: White=3 Black=2
 Inaccurate: White=2 Black=1 OK:
 White=7 Black=9 Best: White=2
 Black=2 Strong: White=2 Black=1
 0-1



Chess Bunny
 By Kwunnie Ng (Montgomery)



Endgame

There has been a lot going on in the world of Texas chess:

- Our top 14-year-old (in the country), **GM Andy Woodward**, has successfully completed his final Grandmaster Norm, which you can read about in the July issue of *Chess Life* (and learn that, at the time, he was the youngest grandmaster, which evidently soon changed).
- 12-year-old **Julian Joseph** from Austin recently surpassed the 2000 rating mark.
- 15-year-old **Logan Shafer** from Waco recently surpassed the 2200 rating mark and is now a *National Master (NM)*.
- Coach **GM Kamil Dragun**, also from Austin, has qualified to play in the Champions Chess Tour CrunchLabs Masters 2 tournament.
- **Jim Hollingsworth** has won the *US Chess Meritorious Service Award* (future article planned), and **Luis A. Salinas** has posthumously won the *US Chess Lifetime Achievement Award* (check out the article by Caleb Brown in this issue). You can read more about *US Chess Awards* and see photos of the winners here: <https://new.uschess.org/news/2024-us-chess-awards-recipients>.
- If you didn't notice, the July 2024 Top Player List shows that Texas has the top three rated Age 14 players in the country. 1. **Andy Woodward** (2597), 2. **Ryo Wenyu Chen** (2499), 3. **Eric Chang Liu** (2446). And, of course, if you followed my *Facebook* page, you'd already know this!

I am sure there have been other successes in the Texas chess world. Feel free to email me with any recent chess accomplishments, I'll do my best to give them a shoutout similar to what I have provided here. Congratulations to all those mentioned above!



A big thank you to Deborah Shafer, the TCA Facebook Administrator, for creating the 65th Anniversary logos that you have seen throughout the last six issues of *Texas Knights*.

Finally, to wrap up our final volume 65 issue, and our 65th anniversary celebration, I thought a couple trivia questions (with answers) would be appropriate.

Q: What year was the first issue of *Texas Knights* published?

A: 1959, per the *Bibliography of Chess Periodicals* by Chico Di Felice.

Q: What's the primary difference between a digital edition and a printed edition of *Texas Knights* (not taking into account the digital vs. physical aspects)?

A: The digital edition is full-color; the printed edition only has color covers (inside and out); the other pages are all grayscale. Also, you can click/tap internal and external links provided within the digital issues to access the linked content.

Q: Where can you find previous years' issues of *Texas Knights*?

A: By tapping/clicking the *Texas Knights Archive* link accessible on the <https://TexasChess.org> website from the *Texas Knights* page or going directly to the Archive: <https://texaschess.org/archive/>.

90TH ANNUAL

SOUTHWEST OPEN 2024



9SS/7SS, G90;INC30

1-DAY SCHOLASTIC, 5SS, G25;D5

International norm possible section is 9 rds, 5-day, 8/29- 9/2. All other sections 7 rounds with 4-day or 3-day options. 8/30, 8/31.

FREE SHUTTLE  NEAR IAH

BLITZ ON SUNDAY

Doubletree by Hilton IAH
15747 JFK Blvd. 77032

1 day Scholastic tournament on 8/31. Trophies!!!!!!!!!!
Team and Individual awards! 3 Sections.     

kingregistration.com/event/90SWO



PRESIDENT
Jim Polomsky

The Election has Started!



VICE PRESIDENT
Jeff French



SECRETARY
Jon Santos



TREASURER
Jonathon Singler

Please Consider These Candidates!

We'd Appreciate Your Support.

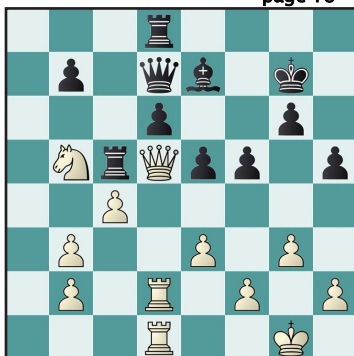


TCA Membership												As of: 7/31/24	
Category	Regions										Out of State	Total	%
	1	2	3	4	5	6	7	8	9	10			
Regular	9	22	16	2	40	13	6	11	2	6	1	128	6.66%
Lifetime Regular	1	10	6	0	7	7	4	3	2	0	2	42	2.19%
Regular Non-subscriber	2	16	14	4	138	20	7	13	1	115	1	331	17.22%
Patron	0	1	2	0	5	4	0	0	0	1	0	13	0.68%
Lifetime Patron	0	2	2	0	1	4	1	1	0	0	2	13	0.68%
Patron Online	0	0	0	0	0	1	0	0	0	0	0	1	0.05%
Family	14	18	10	0	59	8	14	23	0	27	0	173	9.00%
Family Patron	13	4	0	3	8	5	2	3	1	0	0	39	2.03%
Family Online	73	9	5	0	35	20	5	5	0	13	0	165	8.58%
Junior	1	5	15	1	44	15	6	26	0	26	1	140	7.28%
Junior Online	0	6	35	1	90	26	11	325	1	309	0	804	41.83%
Student	0	0	0	0	1	0	0	1	0	0	0	2	0.10%
Student Online	1	2	18	0	4	1	0	0	0	1	1	28	1.46%
Affiliate	2	7	6	1	10	4	0	3	3	0	0	36	1.87%
Complimentary	0	0	1	0	0	0	0	1	0	0	1	3	0.16%
Blind	0	0	0	0	2	0	0	0	0	0	0	2	0.10%
Honorary Life Member	0	0	0	0	0	0	0	0	0	0	1	1	0.05%
Foreign Member	0	0	0	0	0	0	0	0	0	0	1	1	0.05%
Total	116	102	130	12	444	128	56	415	10	498	11	1922	100%
%	6.04%	5.31%	6.76%	0.62%	23.10%	6.66%	2.91%	21.59%	0.52%	25.91%	0.57%	100%	



Texas Chess Association
2709 Longhorn Trail
Crowley, TX 76036-4719

Tactics Time! Answer on
page 18



S. Vuyyuru - D. Bhatti
South Texas State Scholastic 2024
White to Move

